



T1 Inverse Multiplexing

ATLAS 550 NxT1 HSSI/V.35 User Module

Product Features

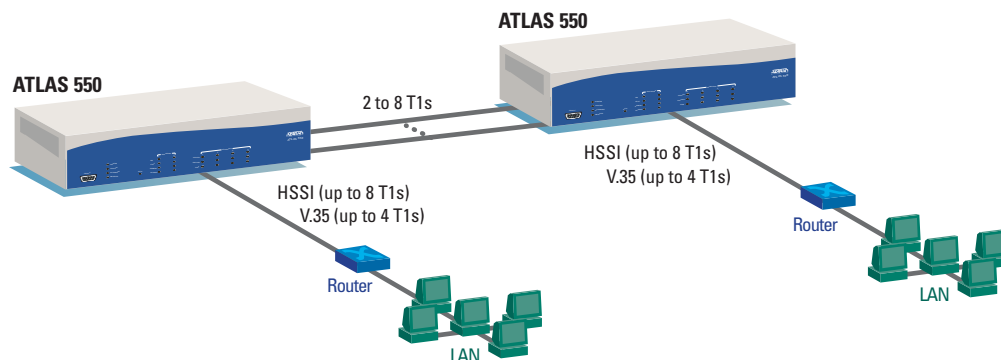
- Inverse multiplexes two to eight T1s
- Module includes four T1 ports and a single HSSI port
- V.35 interface supported with an adapter cable
- Supports point-to-point applications only
- Automatic bandwidth adjustment/recovery
- Compatible with the ATLAS 800 Series NxT1 HSSI/V.35 module
- Occupies one ATLAS 550 User Module slot
- Module does not impact other ATLAS 550 applications
- Standard five-year warranty

The ATLAS™ 550 NxT1 HSSI/V.35 Module combines multiple T1 circuits into a single logical data stream to an integral High-Speed Serial Interface (HSSI) port or V.35 port using an optional cable. This hot-swappable user module uses an ADTRAN proprietary T1 inverse multiplexing protocol to support point-to-point, high-speed data applications.

The inverse multiplexing capacity of the module accommodates eight T1s, and the module automatically adjusts the data rate to the HSSI/V.35 port upon loss of one or more T1 circuits. In addition to the HSSI port, four T1 ports are included on the module itself, while additional T1 ports can be provided using other ATLAS 550 T1 modules. Dial backup is not available for any bandwidth assigned to the HSSI/V.35 port.

Use of the NxT1 HSSI/V.35 module in the ATLAS 550 Integrated Access Device (IAD) does not impact other applications such as T1, ISDN, and/or Frame Relay. The module can also host any ATLAS 550 Resource Module.

The primary application for this module is high-speed connectivity between two external routers, each configured with a HSSI or V.35 port.



**ADTRAN, Inc.**

Attn: Enterprise Networks
901 Explorer Boulevard
Huntsville, AL 35806

P.O. Box 140000
Huntsville, AL 35814-4000

256 963-8000 voice
256 963-8699 fax
256 963-8200 fax back

General Information

800 9ADTRAN
info@adtran.com
www.adtran.com

Pre-Sales**Technical Support**

800 615-1176 toll-free
application.engineer@adtran.com
www.adtran.com/support

Where to Buy

877 280-8416 toll-free
channel.sales@adtran.com
www.adtran.com/where2buy

Post-Sales**Technical Support**

888 423-8726
support@adtran.com
www.adtran.com/support

ACES Installation & Maintenance Service

888 874-ACES
aces@adtran.com
www.adtran.com/support

International Inquiries

256 963 8000 voice
256 963-6300 fax
international@adtran.com
www.adtran.com/international

For the regional office nearest you, visit:

www.adtran.com/where2buy



I.S. EN ISO 9001
ADTRAN is a
ISO 9001 registered company.



TL 9000

ADTRAN is a
TL 9000 registered company.

Printed in the U.S.A.
61200346L2-8C March 2003
Copyright © 2003 ADTRAN, Inc.
All rights reserved.

T1 Inverse Multiplexing

ATLAS 550 NxT1 HSSI/V.35 User Module

Product Specifications

Physical Interface

- One 50-pin female HSSI port
- Four 8-pin modular RJ-48C

T1 Framing

- D4, ESF

T1 Line Coding

- AMI, B8ZS

Line Length

- 24 gauge: 6,000 feet (DS-1), 655 feet (DSX-1)

Diagnostics

- Local loopback-line and payload
- Remote loopback-line and payload

Line Build Out

- 0, 7.5, 15, 22.5 dB
- 266, 399, 533, 655 feet

Alarms

- Loss of signal, red, yellow, blue

Environment

- Operating Temperature: 0° to 50° C (32° to 122° F)
- Storage Temperature: -40° to 70° C (-40° to 158° F)
- Relative Humidity: Up to 95%, non-condensing

Physical

- Size: 1.625" H, 6.25" W, 9.0" D

Agency Approvals

- FCC Part 15, Class A, UL, and Canadian UL (CUL)

Power

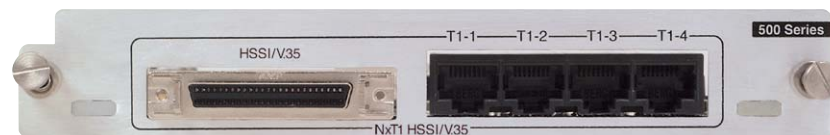
- 7 W

Product Includes

- (4) RJ-48 to RJ-48 cables (6 ft)
- Quick Start Guide

Ordering Information

Equipment	Part #
NxT1 HSSI Module	1200346L2
ATLAS NxT1 V.35 Adapter Cable	1200763L1
ATLAS 550 Four T1 HSSI/V.35 System	4200305L3
ATLAS 550 Eight T1 HSSI System	4200305L4



Specifications subject to change without notice. ADTRAN and ATLAS are trademarks of ADTRAN, Inc. All registered trademarks and trademarks mentioned in this publication are the property of their respective owners.