



**BCM50 RIs 6.0**

**Router – Wizards**

**Task Based Guide**

## **Copyright © 2010 Avaya Inc. All Rights Reserved.**

### **Notices**

While reasonable efforts have been made to ensure that the information in this document is complete and accurate at the time of printing, Avaya assumes no liability for any errors. Avaya reserves the right to make changes and corrections to the information in this document without the obligation to notify any person or organization of such changes.

### **Documentation disclaimer**

Avaya shall not be responsible for any modifications, additions, or deletions to the original published version of this documentation unless such modifications, additions, or deletions were performed by Avaya. End User agree to indemnify and hold harmless Avaya, Avaya's agents, servants and employees against all claims, lawsuits, demands and judgments arising out of, or in connection with, subsequent modifications, additions or deletions to this documentation, to the extent made by End User.

### **Link disclaimer**

Avaya is not responsible for the contents or reliability of any linked Web sites referenced within this site or documentation(s) provided by Avaya. Avaya is not responsible for the accuracy of any information, statement or content provided on these sites and does not necessarily endorse the products, services, or information described or offered within them. Avaya does not guarantee that these links will work all the time and has no control over the availability of the linked pages.

### **Warranty**

Avaya provides a limited warranty on this product. Refer to your sales agreement to establish the terms of the limited warranty. In addition, Avaya's standard warranty language, as well as information regarding support for this product, while under warranty, is available to Avaya customers and other parties through the Avaya Support Web site: <http://www.avaya.com/support>

Please note that if you acquired the product from an authorized reseller, the warranty is provided to you by said reseller and not by Avaya.

### **Licenses**

THE SOFTWARE LICENSE TERMS AVAILABLE ON THE AVAYA WEBSITE, [HTTP://SUPPORT.AVAYA.COM/LICENSEINFO/](http://support.avaya.com/licenseinfo/) ARE APPLICABLE TO ANYONE WHO DOWNLOADS, USES AND/OR INSTALLS AVAYA SOFTWARE, PURCHASED FROM AVAYA INC., ANY AVAYA AFFILIATE, OR AN AUTHORIZED AVAYA RESELLER (AS APPLICABLE) UNDER A COMMERCIAL AGREEMENT WITH AVAYA OR AN AUTHORIZED AVAYA RESELLER. UNLESS OTHERWISE AGREED TO BY AVAYA IN WRITING, AVAYA DOES NOT EXTEND THIS LICENSE IF THE SOFTWARE WAS OBTAINED FROM ANYONE OTHER THAN AVAYA, AN AVAYA AFFILIATE OR AN AVAYA AUTHORIZED RESELLER, AND AVAYA RESERVES THE RIGHT TO TAKE LEGAL ACTION AGAINST YOU AND ANYONE ELSE USING OR SELLING THE SOFTWARE WITHOUT A LICENSE. BY INSTALLING, DOWNLOADING OR USING THE SOFTWARE, OR AUTHORIZING OTHERS TO DO SO, YOU, ON BEHALF OF YOURSELF AND THE ENTITY FOR WHOM YOU ARE INSTALLING, DOWNLOADING OR USING THE SOFTWARE (HEREINAFTER REFERRED TO INTERCHANGEABLY AS "YOU" AND "END USER"), AGREE TO THESE TERMS AND CONDITIONS AND CREATE A BINDING CONTRACT BETWEEN YOU AND AVAYA INC. OR THE APPLICABLE AVAYA AFFILIATE ("AVAYA").

### **Copyright**

Except where expressly stated otherwise, no use should be made of the Documentation(s) and Product(s) provided by Avaya. All content in this documentation(s) and the product(s) provided by Avaya including the selection, arrangement and design of the content is owned either by Avaya or its licensors and is protected by copyright and other intellectual property laws including the sui generis rights relating to the protection of databases. You may not modify, copy, reproduce, republish, upload, post, transmit or distribute in any way any content, in whole or in part, including any code and software. Unauthorized reproduction, transmission, dissemination, storage, and or use without the express written consent of Avaya can be a criminal, as well as a civil offense under the applicable law.

### **Third Party Components**

Certain software programs or portions thereof included in the Product may contain software distributed under third party agreements ("Third Party Components"), which may contain terms that expand or limit rights to use certain portions of the Product ("Third Party Terms"). Information regarding distributed Linux OS source code (for those Products that have distributed the Linux OS source code), and identifying the copyright holders of the Third Party Components and the Third Party Terms that apply to them is available on the Avaya Support Web site: <http://support.avaya.com/Copyright>.

### **Trademarks**

*The trademarks, logos and service marks ("Marks") displayed in this site, the documentation(s) and product(s) provided by Avaya are the registered or unregistered Marks of Avaya, its affiliates, or other third parties. Users are not permitted to use such Marks without prior written consent from Avaya or such third party which may own the Mark. Nothing contained in this site, the documentation(s) and product(s) should be construed as granting, by implication, estoppel, or otherwise, any license or right in and to the Marks without the express written permission of Avaya or the applicable third party. Avaya is a registered trademark of Avaya Inc. All non-Avaya trademarks are the property of their respective owners.*

**Downloading documents**

For the most current versions of documentation, see the Avaya Support. Web site: <http://www.avaya.com/support>

**Contact Avaya Support**

Avaya provides a telephone number for you to use to report problems or to ask questions about your product. The support telephone number is 1-800-242-2121 in the United States. For additional support telephone numbers, see the Avaya Web site: <http://www.avaya.com/support>

Copyright © 2010 ITEL, All Rights Reserved

The copyright in the material belongs to ITEL and no part of the material may be reproduced in any form without the prior written permission of a duly authorised representative of ITEL.

## Table of Contents

<b>Router Wizards.....</b>	<b>5</b>
Overview .....	5
Required Information .....	5
Flow Chart.....	7
Accessing the Web Router GUI .....	8
From Element Manager .....	8
Access Directly via a Web Browser .....	13
BCM50 e/be Wizard .....	15
Running the BCM50e/be Wizard .....	15
BCM50 a/ba Wizard .....	21
Running the BCM50a/ba Wizard .....	21
<b>Avaya Documentation Links .....</b>	<b>27</b>

# Router Wizards

## Overview

The BCM50e/be and BCM50a/ba can be configured to provide connection to an Internet Service Provider (ISP). PC's that are connected, either directly or via a network to the BCM50e/be/a/ba will be able to connect to the ISP for Internet access.

The BCM50e/be can also be configured to connect to a company WAN.

This document provides information concerning the configuration of the BCM50e/be/a/ba Router Wizards. An account with an ISP must be set up before the procedure detailed in this document is performed.

BCM50e/be/a/ba Wizard configuration is performed within the Router Web GUI.

**Note:** This guide relates to the BCM50a/ba and BCM50e/be models only.

**Note:** Although the BCM50a/ba models will not be supplied with BCM 6.0, it is possible to upgrade the variants of these models to BCM 6.0, if they were originally supplied with BCM50 R2 or BCM50 R3 software.

**Note:** The BCM50e/be and BCM50a/ba are fitted with slightly different model router cards. Therefore, the screens and information required may differ slightly. This guide is presented with both variations in separate sections.

**Note:** The BCM50 Integrated Router is almost identical to the Business Secure Router (BSR) models. BCM50a/ba routers are based on the BSR252 and BCM50e/be routers are based on the BSR222.

## Required Information

Before commencing Router Wizard configuration, it would be useful to obtain the required ISP connection information. This information should be provided by your ISP:

### BCM50e/be:

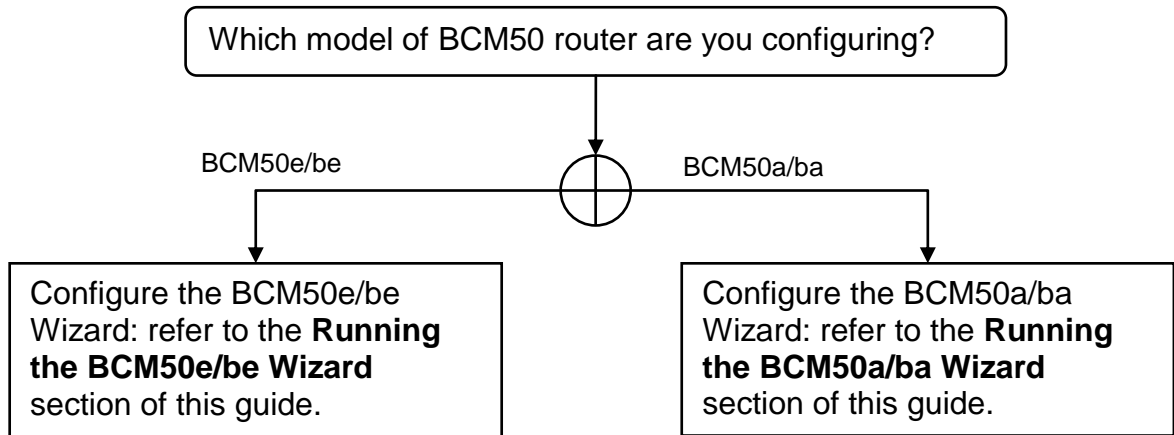
- Encapsulation type
- Service type
- Any account details that may be required for registration, if using the PPP over Ethernet or PPTP encapsulation methods
- Static or Dynamically assigned IP Address

**BCM50a/ba:**

- Network login user name
- Network login password
- Encapsulation type (e.g. PPPoE, PPPoA)
- Multiplex method (e.g. VC, LLC)
- Virtual Circuit information (VPI – Virtual Path Identifier, VCI – Virtual Channel Identifier)
- Static or Dynamically assigned IP Address

## Flow Chart

The flow chart below shows which sections of the guide you should use.



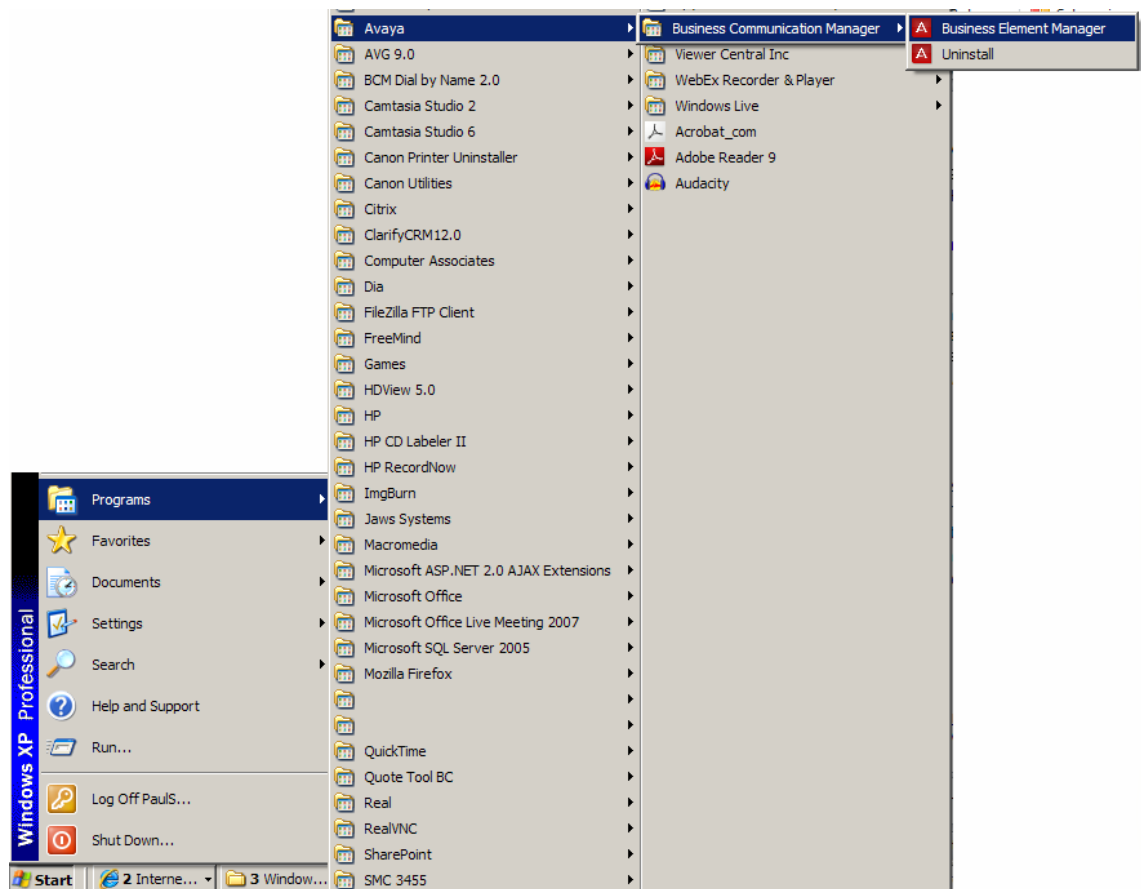
## Accessing the Web Router GUI

There are two methods of accessing the Web Router GUI, independent on which model you are configuring:

- Via Element Manager (management application for all BCM50 models)
- Directly from a web browser

### *From Element Manager*

1. To access the Business Element Manager application from the Start Menu, navigate to **Start, Programs, Avaya, Business Communications Manager, Business Element Manager**.

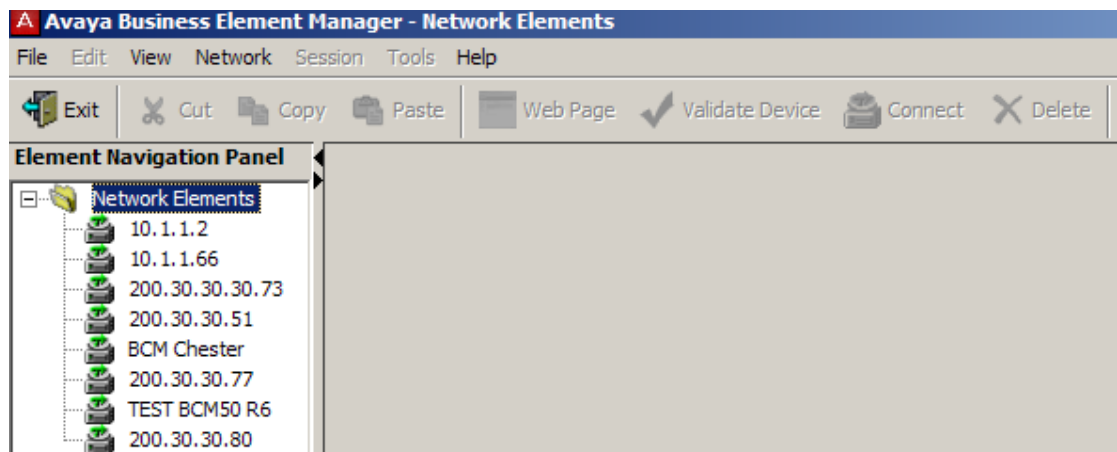


2. Alternatively, double-click on the **Business Element Manager** desktop icon.

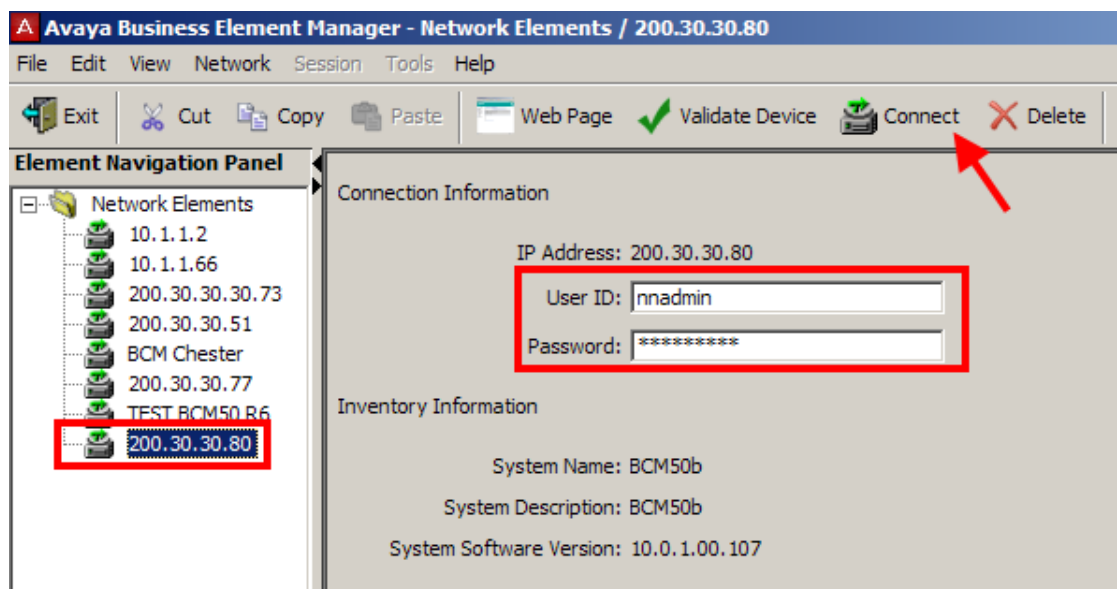




3. You will be presented with the **Element Manager** interface.

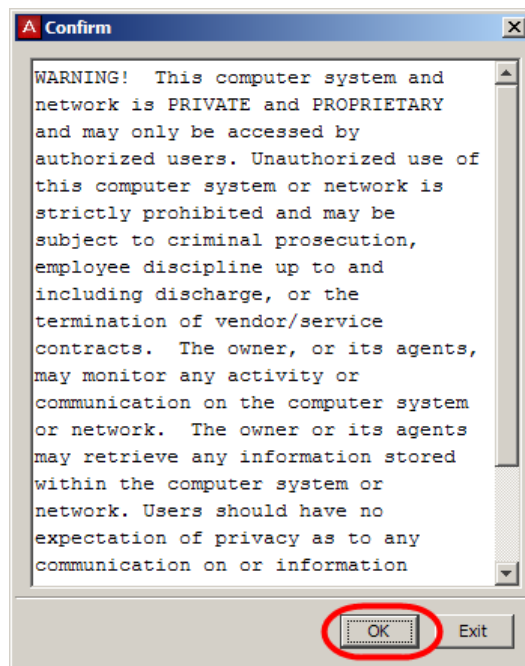


4. Open the **Network Elements** folder and select the IP Address of the BCM.

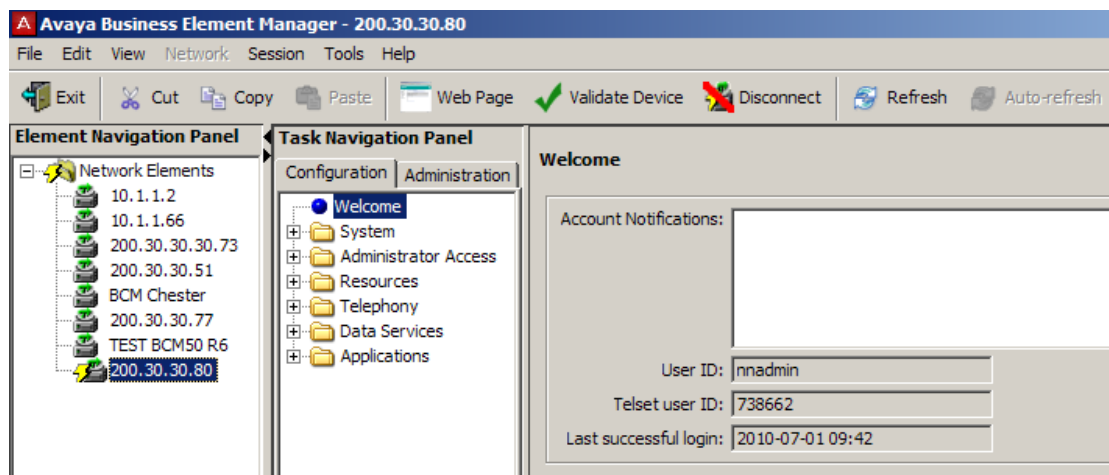


5. Enter the User Name of the BCM in the User Name field, by default this is **nnadmin**. Then enter the Password in the Password field, by default the password is **PlsChgMe!**. Click the **Connect** button.

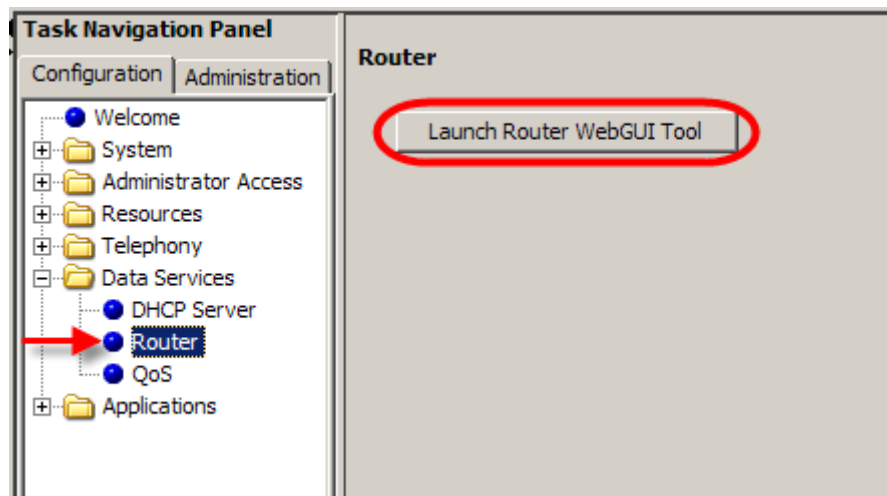
6. A warning screen will appear, read the warning and click **OK**.



7. You will be presented with the Element Manager interface.



8. Click the **Data Services** link, select the **Router** link and click the **Launch Router Web GUI Tool** button.



9. The Business Secure Router logon screen will be displayed. Enter the Username (default = **nnadmin**) and Password (default = **PlsChgMe!**) and click **Login**.

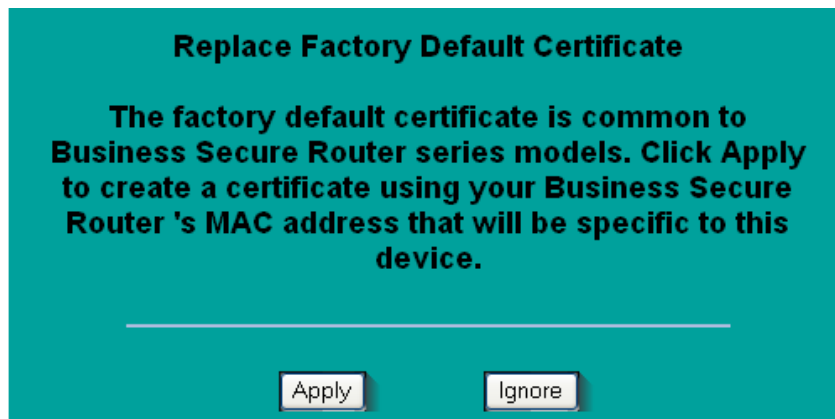
**Note:** if the above logon details do not work, try Username = **admin**, and Password = **setup**.

The image shows the 'Business Secure Router' login screen. It has a teal background. At the top, it says 'Business Secure Router'. Below that, it says 'Enter Password and click Login.' There are two input fields: 'Username:' with 'nnadmin' entered, and 'Password:' with '.....' entered. At the bottom, there are two buttons: 'Login' and 'Reset'.

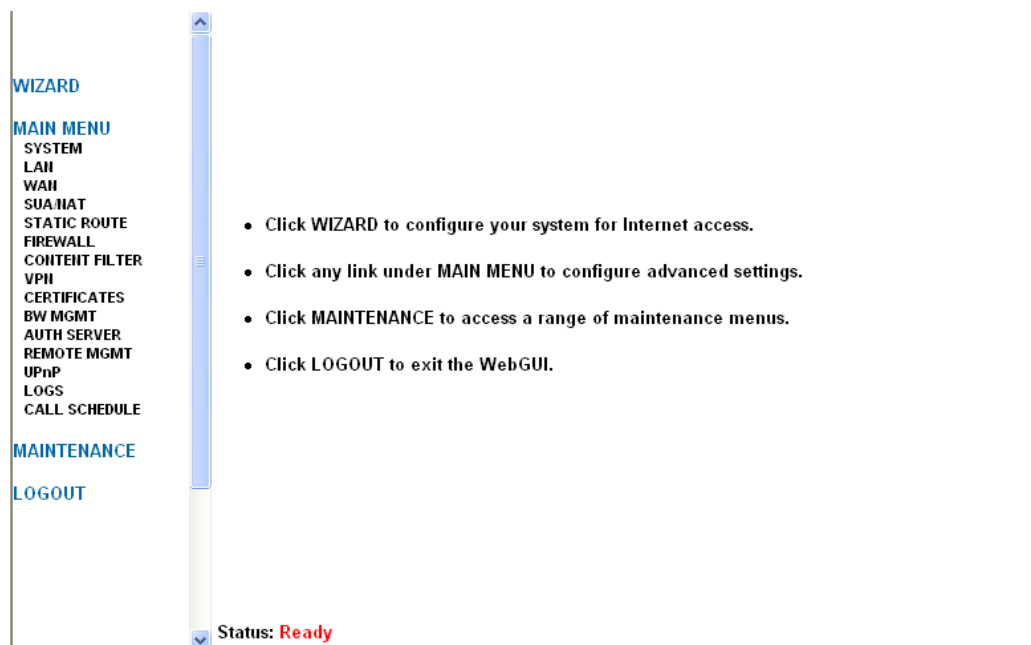
10. Change the password and click **Apply**, or click **Ignore** to continue.

The image shows the 'Business Secure Router' password change screen. It has a teal background. At the top, it says 'Use this screen to change the password.' There are two input fields: 'New Password:' with '.....' entered, and 'Retype to Confirm:' with an empty field. At the bottom, there are two buttons: 'Apply' and 'Ignore'.

11. To replace factory certificate click **Apply** or **Ignore** to continue.

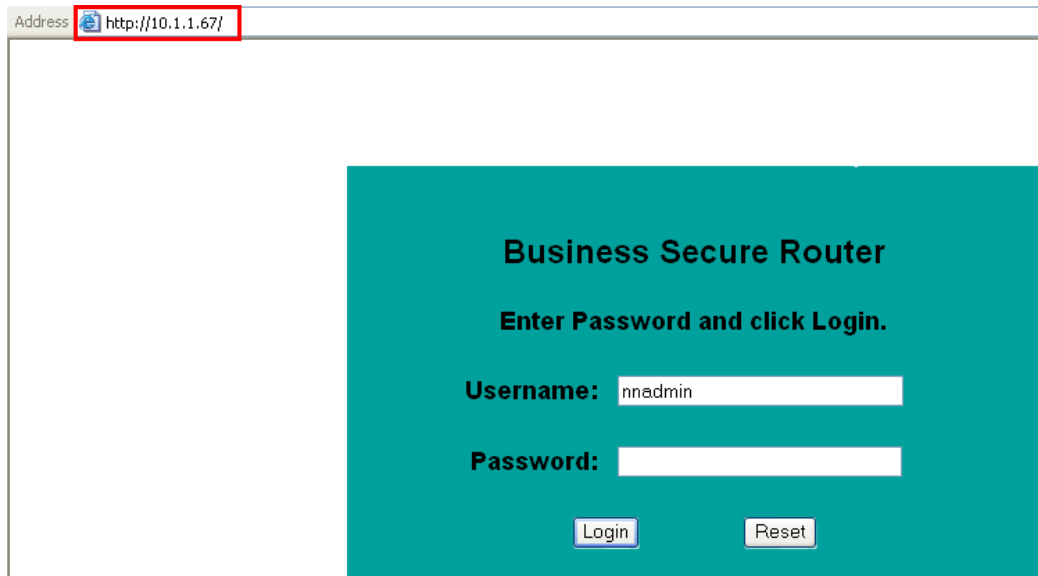


12. The Main Menu screen will display.



### ***Access Directly via a Web Browser***

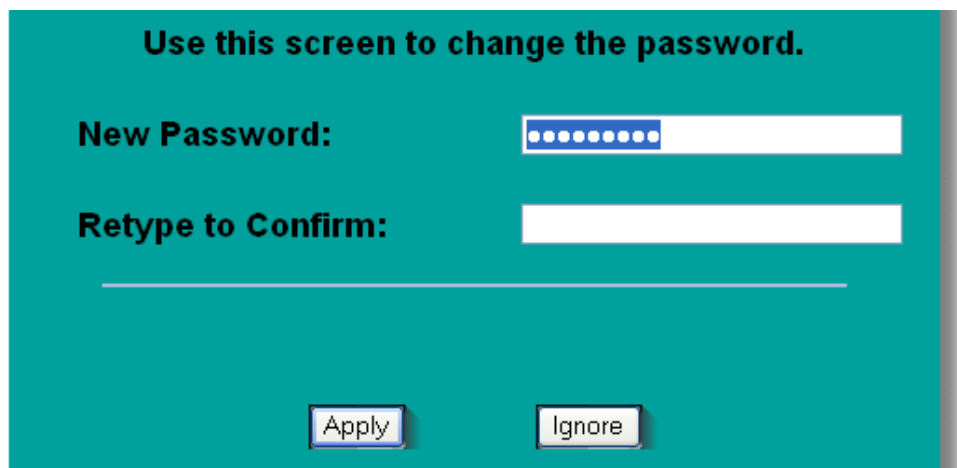
1. Open your web browser. In the address bar, type in **http://<router card LAN IP Address>/** and press **Enter**.



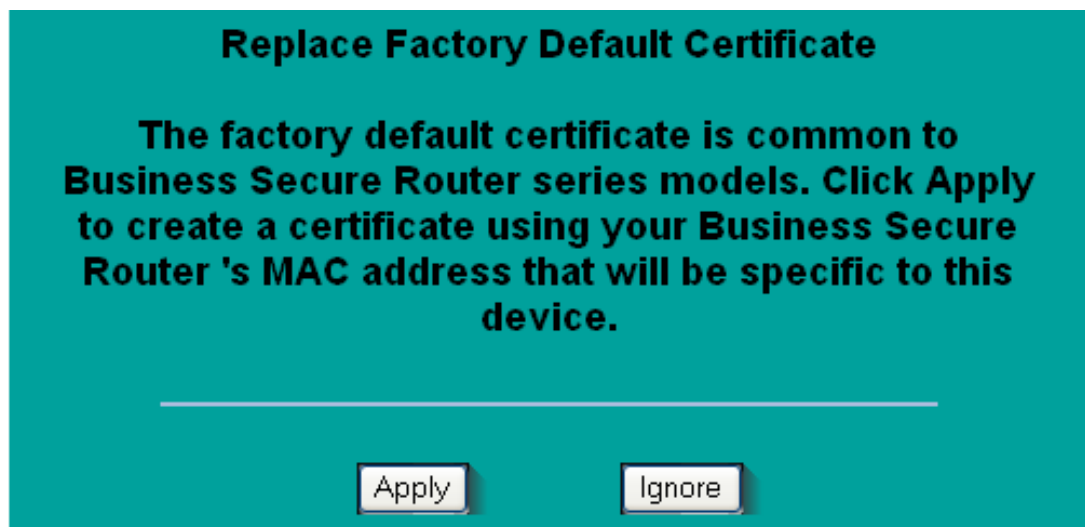
2. The Business Secure Router logon screen will be displayed. Enter the Username (default = **nnadmin**) Password (default = **PlsChgMe!**) and click **Login**.

**Note:** if the above logon details do not work, try Username = **admin** Password = **setup**.

3. Change the password and click **Apply**, or click **Ignore** to continue.



4. To replace factory certificate click **Apply** or **Ignore** to continue.



5. The Main Menu screen will display.



## BCM50 e/be Wizard

The BCM50 e/be Router Wizard is designed to help you configure the BCM50 e/be Router to connect to the Internet via an external ADSL modem (for example), or to a company WAN via other routers.

In most cases, if the connected gateway device is configured with the correct information and has DHCP turned on, then the BCM50 e/be can be set to Ethernet method and to obtain all information from the gateway device.

All BCM50 e/be programming is performed in the Web Router GUI. You will need to use a web browser, e.g. Internet Explorer.

Ensure you have all the details necessary from the ISP, or company network administrator.

### Running the BCM50e/be Wizard

1. Access the Web Router GUI. From the main menu, select **Wizard**.
2. In the **General Setup** screen enter an identifying name for the BCM50 e/be router card in the **System Name** field.

**WIZARD**

**General Setup:**  
This information is optional, but may be helpful in accessing services of your Internet Service Provider, such as mail and news servers and customer support web pages.

Enter a descriptive name for identification purposes. We recommend using your computer's name.

System Name:

The ISP's domain name is often sent automatically by the ISP to the router. If you are having difficulty accessing ISP services, you may need to enter the Domain Name manually in the field below.

Domain Name:

[Next](#)

3. If you are receiving your information from the connected gateway device, the **Domain Name** field can be left blank. If not, you can enter the domain name manually.
4. Press **Next**. The **ISP Parameters for Internet Access** screen is displayed.
5. The screen offers different options dependant on which **Encapsulation Method** is chosen. Complete the screen as appropriate (see the following sections) and click **Next**.

## Wizard Screen 2 - Ethernet Encapsulation Method

If the BCM50e/be is connected to a configured gateway device which provides the necessary network information, this option will be applicable.

ISP Parameters for Internet Access

Encapsulation	Ethernet
Service Type	Standard
User Name	N/A
Password	N/A
Login Server IP Address	N/A

Back Next

Attribute	Description
Encapsulation	You must choose the <b>Ethernet</b> option when the WAN port is used as a regular Ethernet. Otherwise, choose <b>PPP over Ethernet</b> or <b>PPTP</b> for a dial-up connection.
Service Type	Choose from <b>Standard</b> , <b>RR-Telstra</b> (Telstra authentication method), <b>RR-Manager</b> (Roadrunner Manager authentication method) or <b>RR-Toshiba</b> (Roadrunner Toshiba authentication method). Choose a Roadrunner service type if your ISP is Time Warner's Roadrunner; otherwise choose <b>Standard</b> . For ISPs (such as Telstra) that send UDP heartbeat packets to verify that the customer is still online, please create a WAN-to-WAN firewall rule that allows access for port 1026 (UDP). The <b>User Name</b> , <b>Password</b> and <b>Login Server IP Address</b> fields are not applicable ( <b>N/A</b> ) for the <b>Standard</b> service type.
User Name	Type the user name given to you by your ISP.
Password	Type the password associated with the login name above.
Login Server IP Address	The Business Secure Router will try to find the Roadrunner Server IP automatically if you do not type an address. If it does not, then you must type the authentication server IP address.



## Wizard Screen 2 – PPP Over Ethernet

ISP Parameters for Internet Access

Encapsulation

Service Name

User Name

Password

☒ Nailed-Up Connection

Idle Timeout  (Seconds)

Attribute	Description
Service Name	Type the PPPoE service name provided to you. PPPoE uses a service name to identify and reach the PPPoE server.
User Name	Type the user name given to you by your ISP.
Password	Type the password associated with the user name above.
Nailed Up Connection	Select <b>Nailed Up Connection</b> if you do not want the connection to time out.
Idle Timeout	Type the time in seconds that elapses before the Business Secure Router automatically disconnects from the PPPoE server.

## Wizard Screen 2 – PPTP

**ISP Parameters for Internet Access**

Encapsulation: PPTP

User Name: UserY

Password: ••••••••

☒ Nailed-Up Connection

Idle Timeout: 0 (Seconds)

**PPTP Configuration**

My IP Address: 0.0.0.0

My IP Subnet Mask: 0.0.0.0

Server IP Address: 83.67.111.97

Connection ID/Name: PPTPServer

Back Next

Attribute	Description
Encapsulation	Choose an encapsulation method from the drop-down list box. <b>PPTP</b> forms a dial-up connection. Point-to-Point Tunneling Protocol (PPTP) is a network protocol that enables secure transfer of data from a remote client to a private server, creating a Virtual Private Network (VPN) using TCP/IP-based networks. PPTP supports on-demand, multi-protocol, and virtual private networking over public networks, such as the Internet. The Business Secure Router supports only one PPTP server connection at any given time. To configure a PPTP client, you must configure the <b>My Login</b> and <b>Password</b> fields for a PPP connection and the PPTP parameters for a PPTP connection.
User Name	Type the user name given to you by your ISP.
Password	Type the password associated with the user name above.
Nailed Up Connection	Select <b>Nailed Up Connection</b> if you do not want the connection to time out.
Idle Timeout	Type the time in seconds that elapses before the Business Secure Router automatically disconnects from the PPPoE server.
<b>PPTP Configuration</b>	
My IP Address	Type the (static) IP address assigned to you by your ISP.
My Subnet Mask	Type the (static) IP subnet mask assigned to you by your ISP.
Server IP Address	Type the IP address of the PPTP server.
Connection ID/Name	Type your identification name for the PPTP server.

6. The next screen is the **WAN IP Address Assignment**. For a regular Ethernet connection to a configured gateway device providing DHCP most options can be left to **Get Automatically from ISP**.

## Ethernet

WAN IP Address Assignment

☒ Get automatically from ISP (Default)  
☐ Use fixed IP address  
My WAN IP Address   
My WAN IP Subnet Mask   
Gateway IP Address

WAN MAC Address

☒ Factory Default  
☐ Spoof this Computer's MAC Address - IP Address

Back Finish

## PPP over Ethernet & PPTP

WAN IP Address Assignment

☒ Get automatically from ISP (Default)  
☐ Use fixed IP address  
My WAN IP Address

WAN MAC Address

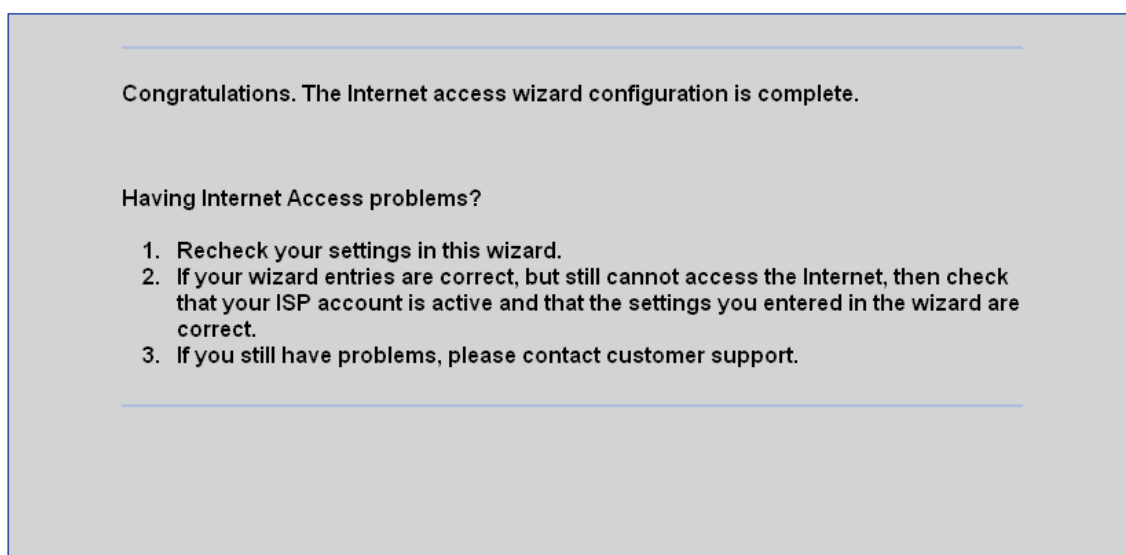
☒ Factory Default  
☐ Spoof this Computer's MAC Address - IP Address

Back Finish

Attribute	Description
Get automatically from ISP	Select this option If your ISP did <b>not</b> assign you a fixed IP address. This is the default selection.
Use fixed IP Address	Select this option If the ISP assigned a fixed IP address.
My WANIP Address	Enter your WAN IP address in this field when you selected <b>Use Fixed IP Address</b> .
My WAN IP Subnet Mask	This field is not available if you chose <b>PPPoE</b> encapsulation in the previous wizard screen. Enter the IP subnet mask in this field if

Attribute	Description
	applicable when you selected <b>Use Fixed IP Address</b> .
Gateway IP Address	This field is not available if you chose <b>PPPoE</b> encapsulation in the previous wizard screen. Enter the gateway IP address in this field if applicable when you selected <b>Use Fixed IP Address</b> .
<b>System DNS Servers</b>	
First DNS Server Second DNS Server Third DNS Server	<p>Select <b>From ISP</b> if your ISP dynamically assigns DNS server information (and the Business Secure Router's WAN IP address). The field to the right displays the (read-only) DNS server IP address that the ISP assigns.</p> <p>Select <b>User-Defined</b> if you have the IP address of a DNS server. Enter the DNS server's IP address in the field to the right.</p> <p>Select <b>None</b> if you do not want to configure DNS servers. If you do not configure a system DNS server, you must use IP addresses when configuring VPN, DDNS and the time server.</p>
<b>WAN MAC Address</b>	
Factory Default	Select this option to use the factory assigned default MAC Address.
Spoof this computers MAC Address – IP Address	Select this option and enter the IP address of the workstation on the LAN whose MAC you are cloning. Once it is successfully configured, the address will be copied to the rom file (configuration file). It will not change unless you change the setting or upload a different ROM file. It is advisable to clone the MAC address from a workstation on your LAN even if your ISP does not presently require MAC address authentication.

7. When you have finished configuring the screen, click **Finish**. The **Congratulations** screen appears.



8. You can test your connection by clicking on the link.

## BCM50 a/ba Wizard

The BCM50 a/ba Router Wizard is designed to help you configure the BCM50 a/ba Router to connect to the Internet. The BCM50 a/ba is designed to connect directly to an ADSL enabled line.

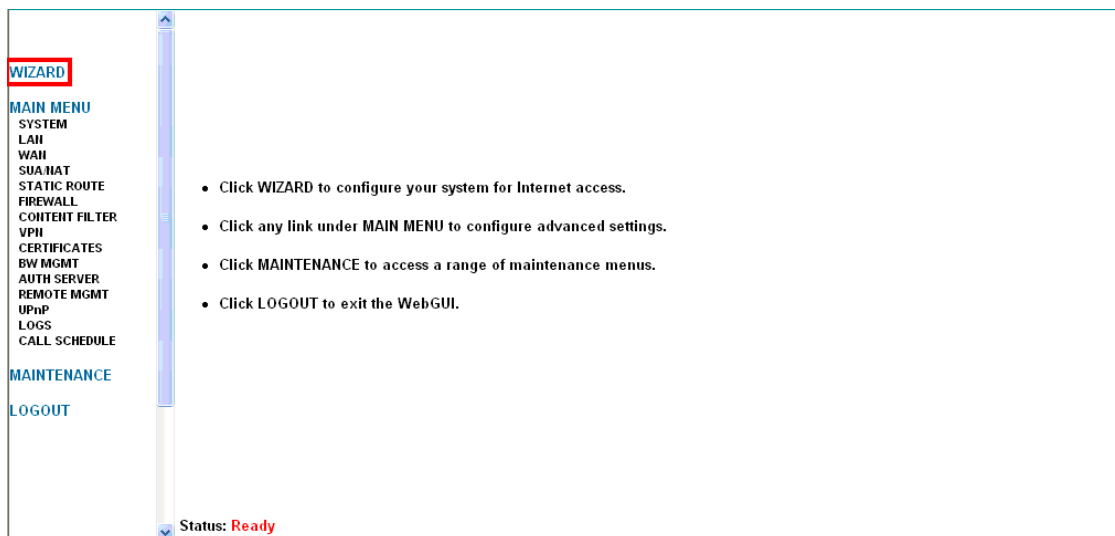
All BCM50 a/ba programming is performed in the Web Router GUI. You will need to use a web browser, e.g. Internet Explorer.

Ensure you have all the details necessary from the ISP.

**Note:** It is recommended that you do not connect the ADSL cable until the settings in the Wizard are complete.

### *Running the BCM50a/ba Wizard*

1. Access the BCM50 a/ba Web Router GUI (see **Accessing the Web Router GUI** section of this guide).
2. From the **Site Map** screen, select **Wizard**.



3. The **Wizard Setup – ISP Parameters for Internet Access** screen appears. Fill in as appropriate (most of these settings should be provided by the ISP), and click **Next**.

**Wizard Setup - ISP Parameters for Internet Access**

Mode: Routing

Encapsulation: PPPoE

Multiplex: LLC

Virtual Circuit ID:

VPI: 0

VCI: 33

Next

Attribute	Description
Mode	Select <b>Routing</b> (default) if your ISP allows multiple computers to share an Internet account. Otherwise select <b>Bridge</b>
Encapsulation	Select the method of encapsulation used by your ISP from the drop-down list box. Choices vary depending on the mode you select in the <b>Mode</b> field. If you select <b>Bridge</b> in the <b>Mode</b> field, select either <b>PPPoA</b> or <b>RFC 1483</b> . If you select <b>Routing</b> in the <b>Mode</b> field, select <b>PPPoA</b> , <b>RFC 1483</b> , <b>ENET ENCAP</b> or <b>PPPoE</b>
Multiplex	Select the method of multiplexing used by your ISP from the drop-down list box- either VC-based or LLC-based.
Virtual Circuit ID	Be sure to use the correct Virtual Path Identifier (VPI) and Virtual Channel Identifier (VCI) numbers supplied by the telephone company. The valid range for the VPI is 0 to 255 and for the VCI is 32 to 65535 (0 to 31 is reserved for local management of ATM traffic).
VPI	Enter the VPI assigned to you by your ISP.
VCI	Enter the VCI assigned to you by your ISP.

4. The next screen allows you to enter logon information and IP Address source.

## Wizard Screen 2 – PPPoA & PPPoE

Wizard Setup - ISP Parameters for Internet Access

Service Name	<input type="text" value="Demon"/>
User Name	<input type="text" value="binch@home500.dslaccess.co.uk"/>
Password	<input type="password" value="••••••••"/>
IP Address	
<input checked="" type="radio"/> Obtain an IP Address Automatically	
<input type="radio"/> Static IP Address	<input type="text" value="0.0.0.0"/>
Connection	
<input checked="" type="radio"/> Connect on Demand: Max Idle Timeout	<input type="text" value="100"/> sec
<input type="radio"/> Nailed-Up Connection	
Network Address Translation	<input type="text" value="SUA Only"/> ▼

Attribute	Description
Service Name	Type the name of your PPPoE service here.
User Name	Enter the login name that your ISP gives you. For PPPoE encapsulation, this field must be of the form user@domain.xxx where the domain identifies your ISP.
Password	Enter the password associated with the user name above.
IP Address	A static IP address is a fixed IP that your ISP gives you. A dynamic IP address is not fixed; the ISP assigns you a different one each time you connect to the Internet. The Single User Account feature can be used with either a dynamic or static IP address. Click <b>Obtain an IP Address Automatically</b> if you have a dynamic IP address; otherwise click <b>Static IP Address</b> and type your ISP assigned IP address in the <b>IP Address</b> text box below.
Connection	Select <b>Connect on Demand</b> when you don't want the connection up all the time and specify an idle time-out (in seconds) in the <b>Max. Idle Timeout</b> field. The default setting selects <b>Connection on Demand</b> with 0 as the idle time-out, which means the Internet session, will not timeout. Select <b>Nailed-Up Connection</b> when you want your connection up all the time. The Router will try to bring up the connection automatically if it is disconnected.
Network Address Translation	Network Address Translation (NAT) allows the translation of an Internet protocol address used within one network (for example a private IP address used in a local network) to a different IP address known within another network (for example a public IP address used on the Internet). Choose <b>SUA Only</b> if you have a single public IP address. SUA (Single User Account) is a subset of NAT that maps one public IP address to many private IP addresses. Choose <b>Full Feature</b> if you have multiple public IP addresses. When you select <b>Full Feature</b> , you must use the NAT address mapping rules screen to configure at least one address mapping set! <b>Full Feature</b> mapping types include: <b>One-to-One</b> , <b>Many-to-One (SUA)</b> , <b>Many-to-Many Overload</b> , <b>Many-to-Many No Overload</b> and <b>Server</b> . Choose <b>None</b> to disable NAT.

## Wizard Screen 2 – RFC1483

**Wizard Setup - ISP Parameters for Internet Access**

IP Address

Network Address Translation

Attribute	Description
IP Address	This field is available if you select <b>Routing</b> in the <b>Mode</b> field. Type your ISP assigned IP address in this field.
Network Address Translation	Network Address Translation (NAT) allows the translation of an Internet protocol address used within one network (for example a private IP address used in a local network) to a different IP address known within another network (for example a public IP address used on the Internet). Choose <b>SUA Only</b> if you have a single public IP address. SUA (Single User Account) is a subset of NAT that maps one public IP address to many private IP addresses. Choose <b>Full Feature</b> if you have multiple public IP addresses. When you select <b>Full Feature</b> , you must use the NAT address mapping rules screen to configure at least one address mapping set! <b>Full Feature</b> mapping types include: <b>One-to-One</b> , <b>Many-to-One</b> (SUA), <b>Many-to-Many Overload</b> , <b>Many-to-Many No Overload</b> and <b>Server</b> . Choose <b>None</b> to disable NAT.

## Wizard Screen 2 – ENET ENCAP

**Wizard Setup - ISP Parameters for Internet Access**

IP Address

☒ Obtain an IP Address Automatically

☐ Static IP Address

IP Address

Subnet Mask

ENET ENCAP Gateway

Network Address Translation



Attribute	Description
IP Address	A static IP address is a fixed IP that your ISP gives you. A dynamic IP address is not fixed; the ISP assigns you a different one each time you connect to the Internet. The Single User Account feature can be used with either a dynamic or static IP address. Select <b>Obtain an IP Address Automatically</b> if you have a dynamic IP address; otherwise select <b>Static IP Address</b> and type your ISP assigned IP address in the <b>IP Address</b> text box below.
Subnet Mask	Enter a subnet mask in dotted decimal notation.
ENET ENCAP Gateway	You must specify a gateway IP address (supplied by your ISP) when you use <b>ENET ENCAP</b> in the <b>Encapsulation</b> field in the previous screen.
Network Address Translation	Network Address Translation (NAT) allows the translation of an Internet protocol address used within one network (for example a private IP address used in a local network) to a different IP address known within another network (for example a public IP address used on the Internet). Choose <b>SUA Only</b> if you have a single public IP address. SUA (Single User Account) is a subset of NAT that maps one public IP address to many private IP addresses. Choose <b>Full Feature</b> if you have multiple public IP addresses. When you select <b>Full Feature</b> , you must use the NAT address mapping rules screen to configure at least one address mapping set! <b>Full Feature</b> mapping types include: <b>One-to-One</b> , <b>Many-to-One</b> (SUA), <b>Many-to-Many Overload</b> , <b>Many-to-Many No Overload</b> and <b>Server</b> .

5. A confirmation screen is displayed. Click **Save Settings** to apply your configuration.

Wizard Setup - ISP Parameters for Internet Access

---

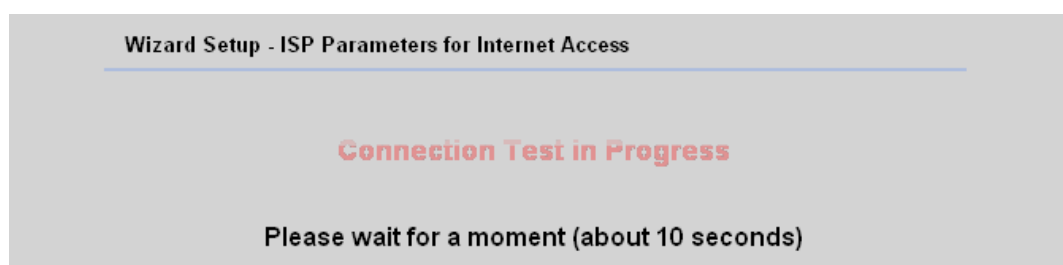
**WAN Information:**  
 Mode: Routing  
 Encapsulation: PPPoE  
 Multiplexing: LLC  
 VPI/VCI: 0/33  
 Service Name :  
 binch@home500.dslaccess.co.uk  
 User Name : david drew  
 Password : \*\*\*\*\*  
 IP Address : Obtain an IP Address Automatically  
 Network Address Translation: SUA Only  
 Connect on Demand: Max  
 Idle Timeout 100 sec.

**LAN Information:**  
 IP Address: 192.168.1.1  
 IP Mask: 255.255.255.0  
 DHCP: ON  
 Client IP Pool Starting Address: 192.168.1.2  
 Size of Client IP Pool: 126

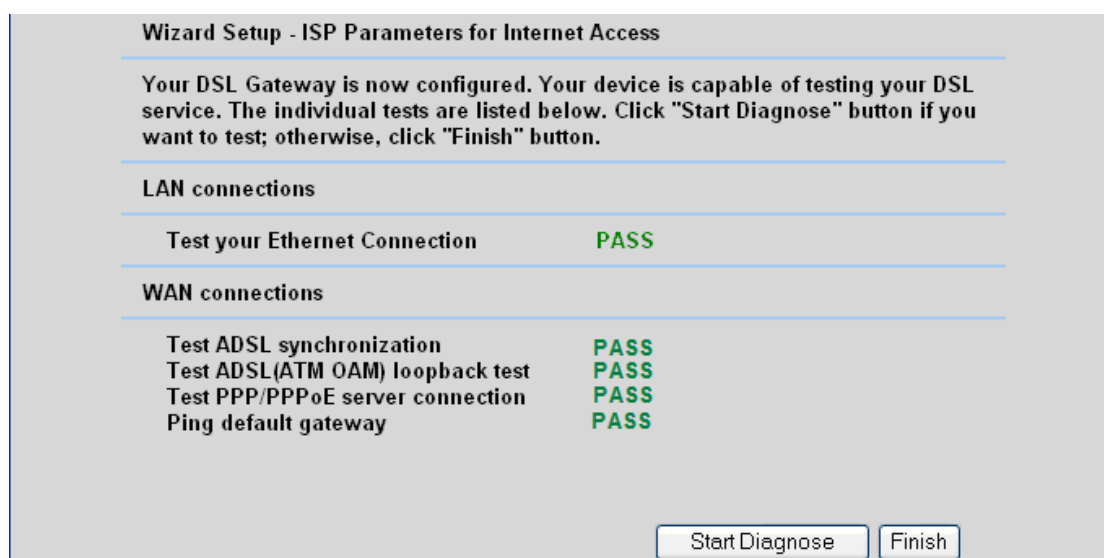
---

**NOTE:** You should now **ensure** that the ADSL cable is plugged into the ADSL port.

- The settings can be diagnosed. Click **Start Diagnose** to test the connection. All items should read **PASS**.



- Your BCM50a/ba ADSL Router should now be configured to access the Internet.



## Avaya Documentation Links

- [BCM50e Integrated Router Configuration – Basics](#)
- [BCM50a Integrated Router Configuration – Basics](#)

