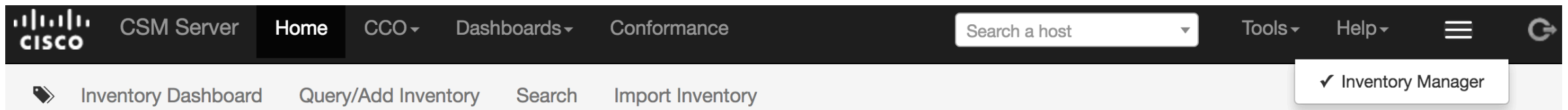


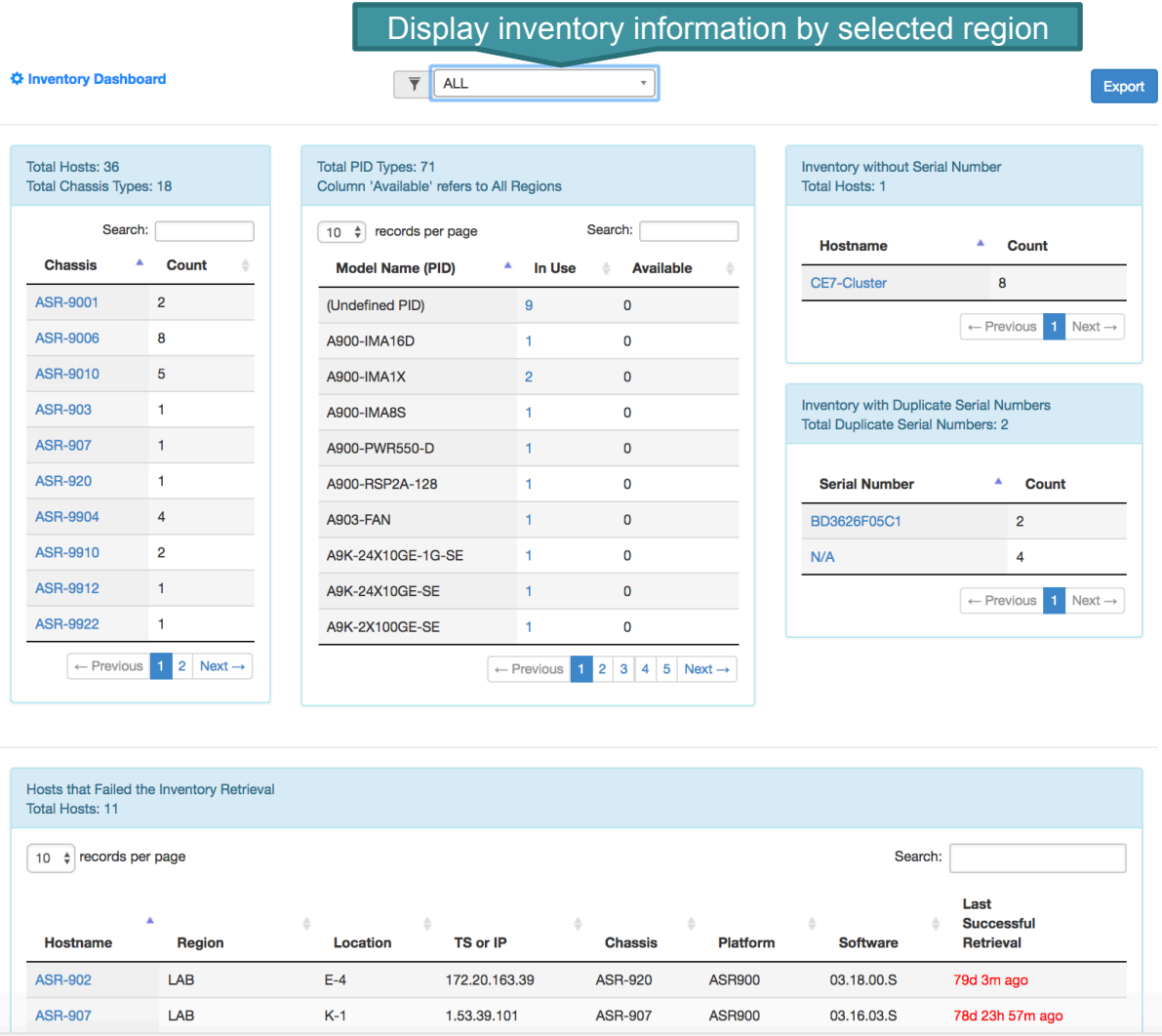
Inventory Manager (Licensed Feature)

General

- Inventory Manager allows users to manage inventory discovered on the hosts in CSM Server, as well as any inventory that users manually add or import into CSM.
- It provides 4 main features:
 - Inventory Dashboard – Display important inventory overviews and summaries.
 - Query/Add Inventory – Query, update, or add individual inventory based on unique serial numbers.
 - Search – Search inventory with optional filters.
 - Import Inventory – Import new inventory into CSM Server in mass.
- All features are available from the Inventory Manager Menu Bar. The menu bar is visible by default when logging in. To hide/show the menu bar, click the three stripe icon in the top right corner of the Main Menu Bar.

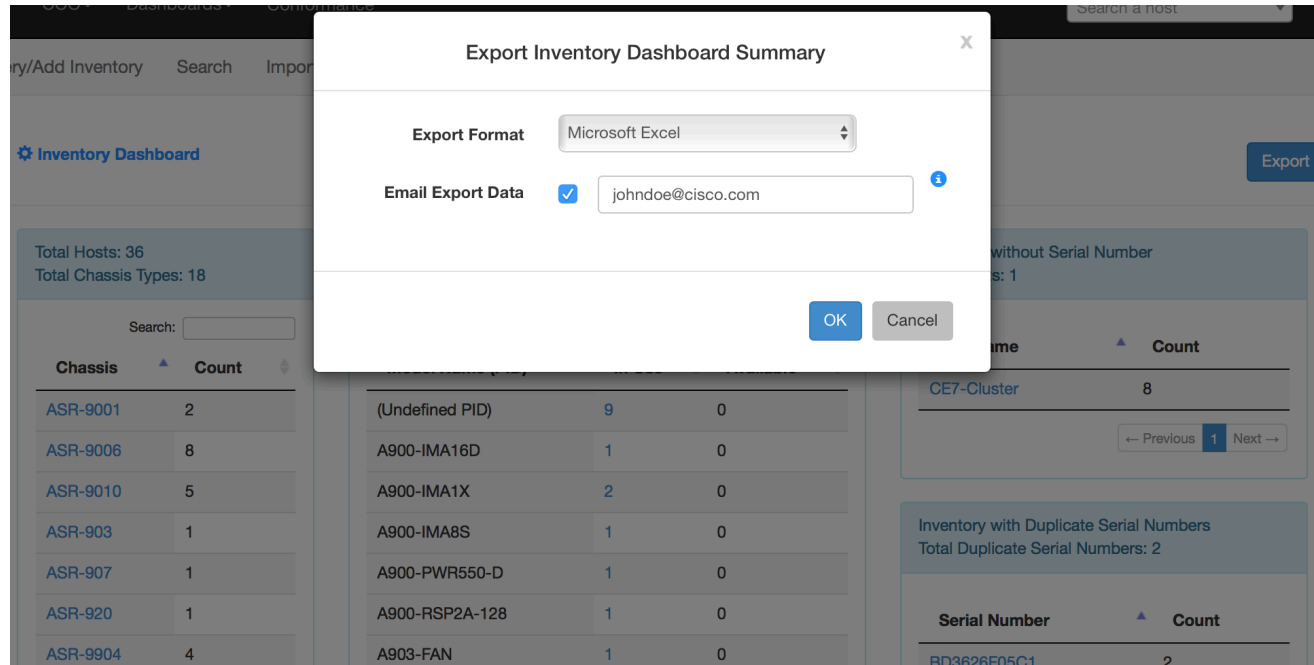


Inventory Dashboard



- Provides important overviews of inventory.
- Ideally, only the first two tables – chassis and model names should have information.
- The Inventory without Serial Number table indicates the discovered hardware has no serial number assigned.
- The Inventory with Duplicate Serial Numbers table may indicate duplicate hosts on CSM referring to the same device.
- Click the blue hyperlinks to see details of the inventory or hosts involved.

Inventory Dashboard - Continue



- To export summary information of the first four tables, click the Export button.
- *Note: Supported export formats are Microsoft Excel, HTML, and CSV. In addition to a generated report, you may select to email the report. To receive the report through email, the administrator must setup Email Notification via the Admin Console. By default, current user's email address is displayed in the export dialog. You may provide one or more comma-delimited email addresses, if desired.

* The note applies to all export functions in the Inventory Manager.

Query/Add Inventory

Query/Add Inventory:

Serial Number	<input type="text" value="FOC160785RC"/>	<input type="button" value="Search"/>
Model Name (PID)	<input type="text" value="A9K-24X10GE-SE"/>	<input type="button" value="i"/>
Status	Available	
Notes	<input type="text" value="new - 24-port 10GE, Service Edge Optimized LC"/>	
	<input type="button" value="Save"/>	<input type="button" value="Cancel"/>

- From here, you can enter a serial number to:
 - Add new inventory.
 - Query inventory with an unique serial number.
 - Update model name (if applicable) and notes of the queried inventory.
- To add a new inventory, provide the model name and notes.

Query/Add Inventory - Continue

Query/Add Inventory:

Serial Number	<input type="text" value="FOC160785RC"/>	<input type="button" value="Search"/>
Model Name (PID)	<input type="text" value="A9K-24X10GE-SE"/>	<input type="button" value="i"/>
Status	Available	
Notes	<input type="text" value="new - 24-port 10GE, Service Edge Optimized LC"/>	
<input type="button" value="Save"/> <input type="button" value="Cancel"/> <input type="button" value="Delete"/>		

- If you are querying existing inventory, depending on the status of the inventory, you will see different information.
- If the status of the inventory is “Available”, the inventory is not currently in use by any of the hosts in CSM.
- In this case, you can modify and update its model name and notes. You can also delete such inventory.
- If the inventory has been in use in a device before, you can see additional information including Description and VID. Otherwise, you will only see the model name and notes.

Query/Add Inventory - Continue

Query/Add Inventory:


Serial Number

Model Name (PID) ⓘ

Name module 0/RSP1/CPU0

Description ASR9K Route Switch Processor with 440G/slot Fabric and 6GB

VID V02

Status In Use
Hostname: RO
Chassis: ASR-9010 **Region:** DCLab
Platform: ASR9K **Software:** 5.3.4
Last Successful Retrieval: 2d 12h 52m ago 

Notes

Click to retrieve inventory from this host again. The information will be updated when the retrieval is completed

- If the status of this inventory is “In Use” (i.e. used by a CSM host), you will see all information retrieved from the host, such as model name, name, description, VID, etc. While you cannot modify this information, you can update the notes on this inventory.

Search Inventory

Search Inventory:

Serial Number	<input type="text" value="Optional"/>
Region	<input type="text" value="Optional"/>
Chassis	<input type="text" value="Optional"/>
Software	<input type="text" value="Optional"/>
Model Name (PID)	<input type="text" value="Optional"/>
OR	<input type="text" value="Comma-delimited Partial or Full PID(s)"/>
VID	<input type="text" value="Optional"/>

Search

Export

From here, you can:

- Search inventory based on filters.
- Export search results based on filters.

Search Inventory - Continue

Search Inventory:

Serial Number	<input type="text" value="Optional"/>
Region	<input type="text" value="x LAB x SJ20 x"/>
Chassis	<input type="text" value="x ASR-9010 x ASR-9904 x ASR-9910 x"/>
Software	<input type="text" value="x 5.3.4 x 6.0.1 x 6.1.1 x"/>
Model Name (PID)	<input type="text" value="Optional"/>
	OR <input type="text" value="A9K"/>
VID	<input type="text" value="V01"/>

- The Serial Number field only accepts one serial number. Similarly, the VID field accepts one VID.
- The Region, Chassis, Software, and Model Name fields can accept multiple options. For your convenience, as you type, available options that match your partial input are shown to ease your selection.
- For the Model Name field, you can either select options like stated above, or you can provide partial strings. For example, if you are looking for all the line cards with “8X100GE” and “12X100GE”, you can simply select “8X100GE,12X100GE” in the Model Name field.

Search Inventory - Continue

Results:

In Use 5

Available 1

100 records per page

Search:

Model Name	Name	Serial Number	VID	Description	Hostname	Chassis
A9K-RSP440-SE	module 0/RSP0/CPU0	FOC161780G1	V01	ASR9K Route Switch Processor with 440G/slot Fabric and 12GB	RO	ASR-9010
A9K-8T-L	module 0/2/CPU0	FOC141380LS	V01	8-Port 10GE Low Queue Line Card, Requires XFPs	RO	ASR-9010
A9K-MPA-4X10GE	module 0/3/0	FOC154182J2	V01	ASR 9000 4-port 10GE Modular Port Adapter	RO	ASR-9010
A9K-MPA-2X10GE	module 0/5/1	FOC161480Q4	V01	ASR 9000 2-port 10GE Modular Port Adapter	RO	ASR-9010
A9K-3KW-AC	power-module 0/PS0/M0/SP	TLD1429501P	V01	3kW AC Power Module	RO	ASR-9010

Showing 1 to 5 of 5 entries

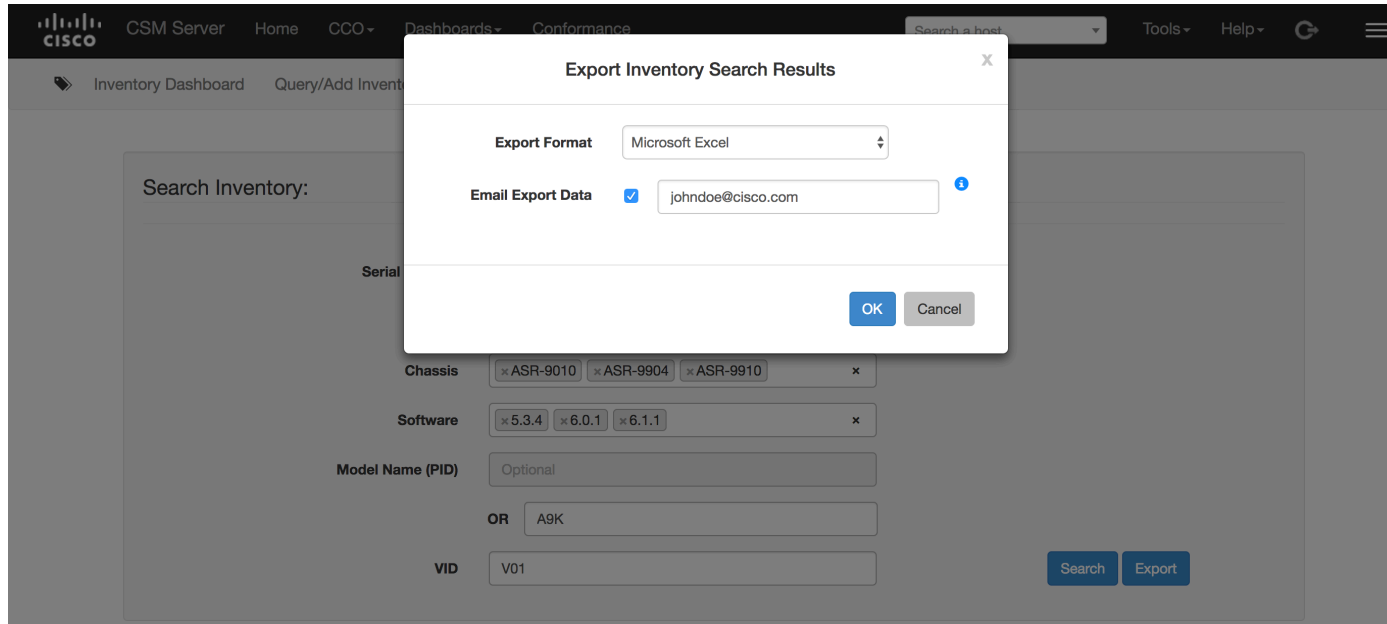
← Previous

1

Next →

- Search results for In Use inventory and Available inventory are presented in two separate tab views as different information is available for each. If there is no matching result in the category, the relevant tab will not appear.

Search Inventory - Continue



- Users can also export search results.
- The export runs independently from the search, which means users can choose Export directly after setting filters without choosing Search first.

Import Inventory

Import Inventory

NOTES

IMPORT DATA

If the import data does not contain notes, the notes entered below will be used.

new inventory from March 8, 2017

Next

- From here, you can import inventory in mass.
- First, enter general notes into the textbox, if desired. These general notes will be entered for all inventories that don't have their own inventory-specific notes.

Import Inventory

Import Inventory

NOTES

IMPORT DATA

Import Instructions ▾

- Paste the import data onto the text window below.
- The first data line must be a header line.
- The data fields must be comma delimited.
- If a data field does not contain any value, leave it blank.
- The serial number data field cannot be blank.
- For data with duplicate serial numbers, only the first data entry will be imported, the rest will be ignored.
- The notes data field must be double-quoted, if not blank.
- Acceptable header fields are serial_number, model_name, and notes.
- Mandatory header field is serial_number.

```
serial_number,model_name,notes <- header (model_name and notes are optional)
FOC162980AA,, <- leave blank for empty field(s)
FOT1981P81A,A9K-RSP440-SE,"spare RSP"
```

Previous

Finish

- Then, simply copy and paste inventory information into the text field and click Finish.
- For each inventory, users must provide at least a serial number. Optionally, users can also provide model name and notes. If the notes field is empty, the general notes will be used for that inventory entry.
- Click “Import Instructions” to see more detailed rules.