

SmartHub User Guide

March 31, 2016

1.1 Edition

SmartHub User Guide 1.1

Copyright © 2016 Citrix Systems, Inc. All Rights Reserved.

Version 1.1

Citrix Systems, Inc.

851 West Cypress Creek Road

Fort Lauderdale, FL 33309

United States of America

Disclaimers

This document is furnished "AS IS." Citrix, Inc. disclaims all warranties regarding the contents of this document, including, but not limited to, implied warranties of merchantability and fitness for any particular purpose. This document may contain technical or other inaccuracies or typographical errors. Citrix, Inc. reserves the right to revise the information in this document at any time without notice. This document and the software described in this document constitute confidential information of Citrix, Inc. and its licensors, and are furnished under a license from Citrix, Inc.

Citrix Systems, Inc., the Citrix logo, Citrix XenServer and Citrix XenCenter, are trademarks of Citrix Systems, Inc. and/or one or more of its subsidiaries, and may be registered in the United States Patent and Trademark Office and in other countries. All other trademarks and registered trademarks are property of their respective owners.

Trademarks

Citrix®
XenServer®
XenCenter®
XenDesktop®
XenApp®
Podio®

Table of Contents

- Welcome 4
 - Feature Summary..... 4
- Feature Detail 5
 - Alerts 5
 - View an Alert..... 5
- Concierge 7
- AutoLaunch 8
 - Enable an AutoLaunch Application 8
- Application Request 9
 - Request an Application 9
- System Information 10
 - Show System Info..... 10

Welcome

This guide steps through the implementation, configuration and use of SmartHub.

Feature Summary

- Alerts
 - *Alert or notify users*
 - *Smart tag support*
 - *HTML format*
- Concierge
 - *GoToAssist live chat support*
 - *Supports GTA keyboard and mouse control*
- Auto Launch
 - *Enable or disable Windows startup applications*
- Application Request
 - *Request applications in an easy to use interface*
 - *Integrated with Podio*

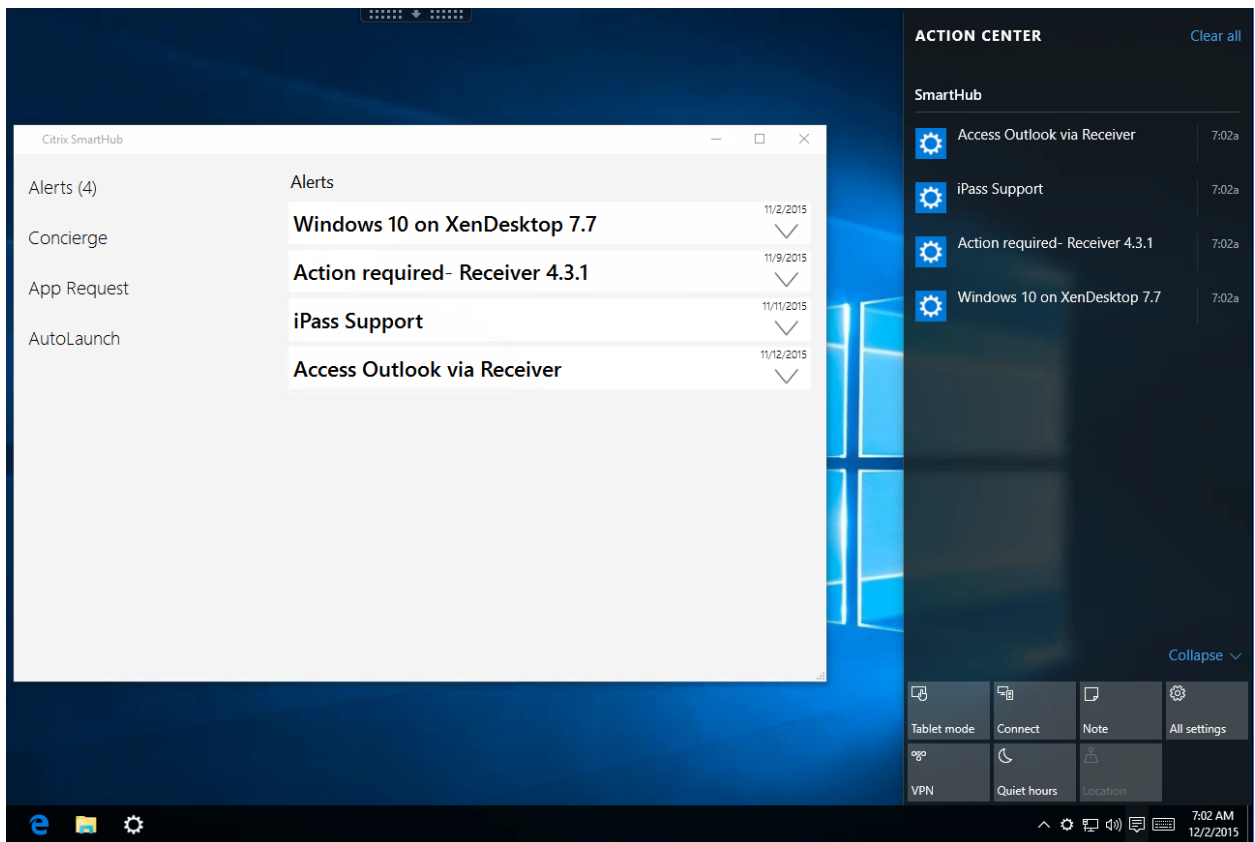
Feature Detail

Alerts

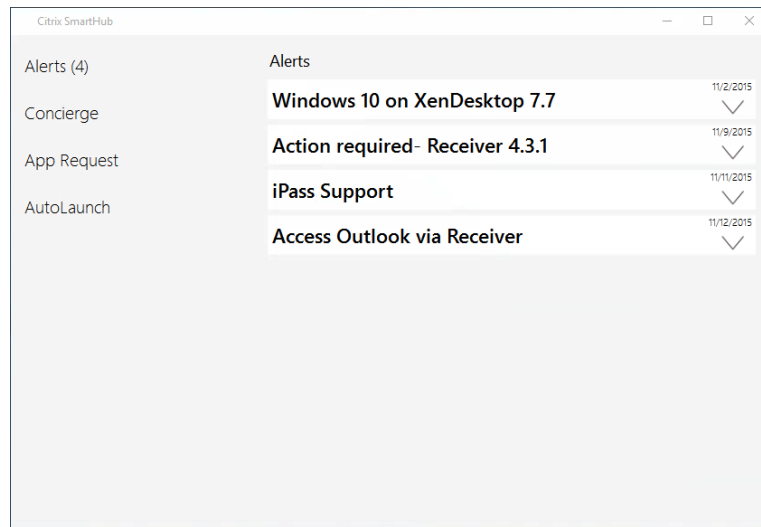
The Alerts feature helps notify users of IT or other company related information. Notifications of new alerts are displayed in the Action Center on Windows 10.

View an Alert

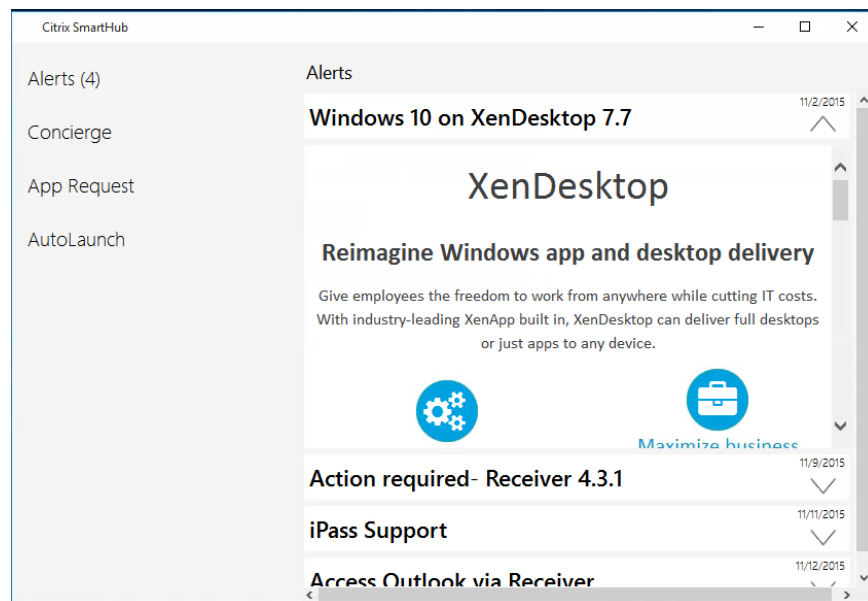
1. An Alert pops-up in the Action Center.



2. Launch SmartHub and click on Alerts.



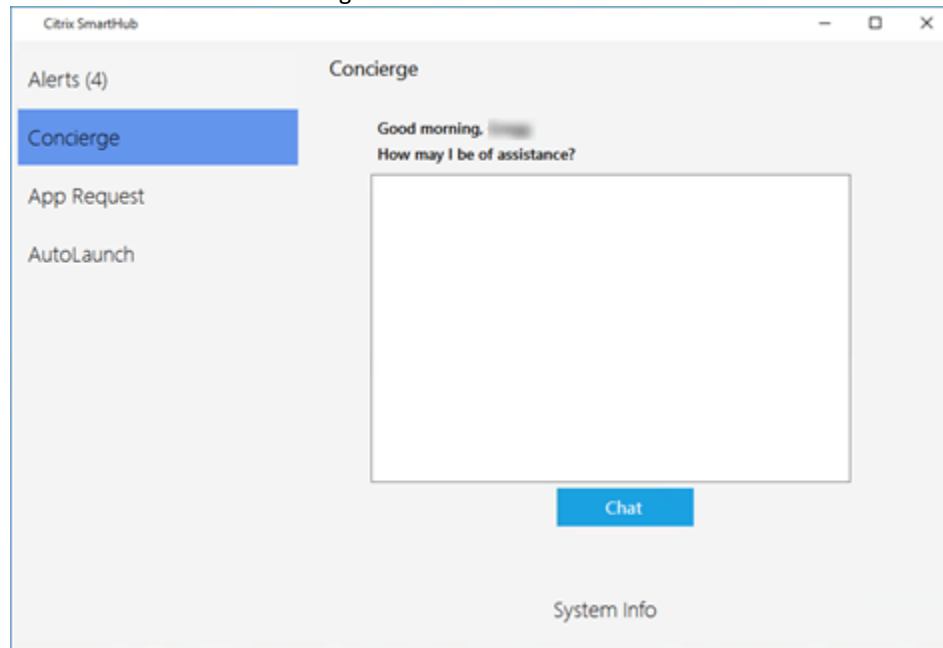
3. Click on the alert to view detail.



Concierge

GoToAssist live chat support.

1. Launch SmartHub. Click on Concierge.



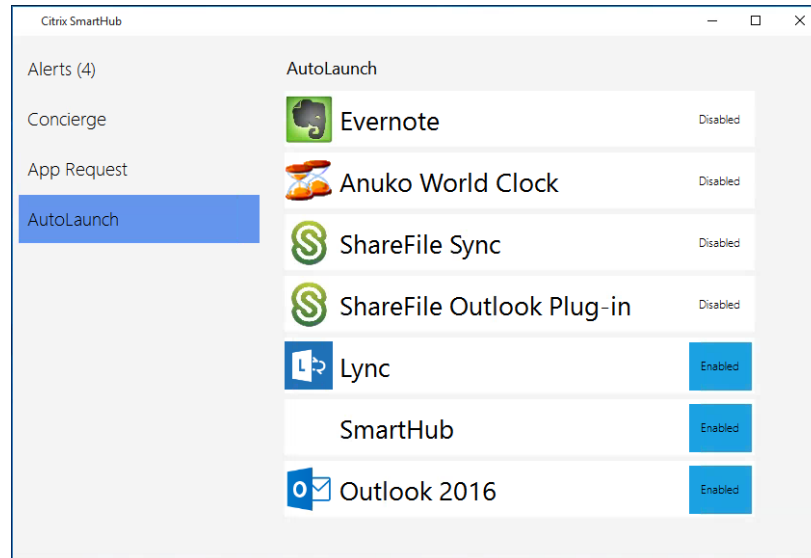
2. Type a question and click Chat.

AutoLaunch

Enable or disable Windows startup applications. Start-Up applications can enable a more productive user experience or slow down logon speeds. This feature of SmartHub allows the user chose their own start-up experience.

Enable an AutoLaunch Application

1. Start SmartHub. Click on AutoLaunch.



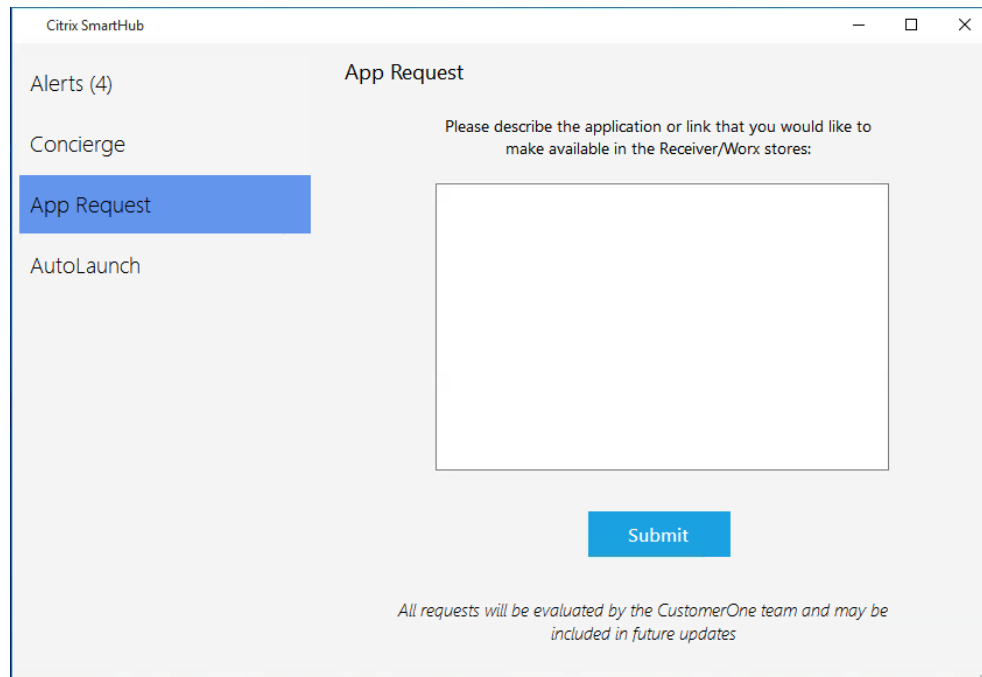
2. Enable or disable an application. Your changes will take effect on the next login.

Application Request

Request applications with an easy to use interface.

Request an Application

1. Launch SmartHub, click on App Request.



The screenshot shows the Citrix SmartHub application window. On the left is a sidebar with a menu containing 'Alerts (4)', 'Concierge', 'App Request' (which is highlighted with a blue background), and 'AutoLaunch'. The main area of the window is titled 'App Request'. It contains a text prompt: 'Please describe the application or link that you would like to make available in the Receiver/Worx stores:'. Below this prompt is a large, empty rectangular text box for input. At the bottom center of the main area is a blue button labeled 'Submit'. At the very bottom of the window, there is a small line of italicized text: 'All requests will be evaluated by the CustomerOne team and may be included in future updates'.

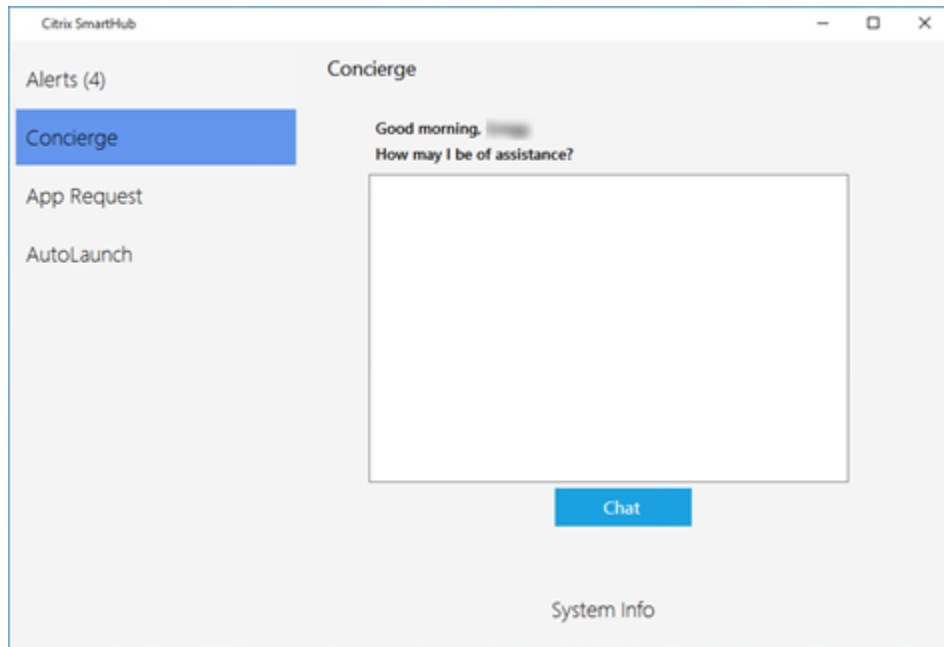
2. Type your request. Click Submit.

System Information

Display information about your computer.

Show System Info

1. Launch SmartHub. Click on Concierge.



2. Click System Info.

