



SEL Manager Instruction Manual

FASTFIND LINKS

[Document Organization](#)

[Contents](#)

© 2012 Hitachi, Ltd. All rights reserved.

No part of this publication may be reproduced or transmitted in any form or by any means, electronic or mechanical, including photocopying and recording, or stored in a database or retrieval system for any purpose without the express written permission of Hitachi, Ltd. (hereinafter referred to as "Hitachi").

Hitachi reserves the right to make changes to this document at any time without notice and assumes no responsibility for its use. This document contains the most current information available at the time of publication. When new and/or revised information becomes available, this entire document will be updated and distributed to all registered users.

All of the features described in this document may not be currently available. For information about features and product availability, refer to the most recent product announcement or contact.

Notice: Hitachi products and services can be ordered only under the terms and conditions of Hitachi's applicable agreement(s). The use of Hitachi products is governed by the terms of your agreement(s) with Hitachi.

Hitachi is a registered trademark of Hitachi, Ltd. in Japan and other countries.

Hitachi Compute Blade (hereinafter referred to as "Compute Blade".) is a trademark of Hitachi.

All other trademarks, service marks, and company names are properties of their respective owners.

Microsoft product screen shots are reprinted with permission from Microsoft Corporation.



Contents

Preface	v
Intended audience	vi
Document revision level	vi
Document organization	vi
Before you use this product	1-1
SEL Manager overview	1-2
Installation Procedure	2-1
SEL Manager installation procedure	2-2
Installation	2-3
Starting and Stopping the Service	3-1
Procedures for stopping and starting the SEL Manager service	3-2
Stopping the SEL Manager service	3-2
Starting the SEL Manager service	3-3

(This page is intentionally left blank.)



Preface

- ☐ [Intended audience](#)
- ☐ [Document revision level](#)
- ☐ [Document organization](#)

Intended audience

This document is intended for the personnel who are involved in managing, configuring and operating the Compute Rack.

Document revision level

Revision	Date	Description
00	June 2012	Initial release

Document organization

The table below provides an overview of the contents and organization of this document. Click the chapter title in the left column to go to that chapter. The first page of each chapter provides links to the sections in that chapter.

Chapter	Description
Chapter 1, Before you use this product	Describes the contents you need to know before using SEL Manager. Read this chapter before use.
Chapter 2, Overview of the remote console	Describes how to install SEL Manager.
Chapter 3, Starting and Stopping the Service	Describes how to manually stop and start the SEL Manager service.

Before you use this product

This chapter describes the contents you need to know before using SEL Manager. Read this chapter before use.

□ [SEL Manager overview](#)

SEL Manager overview

SEL Manager is a Windows service program that outputs SEL information recorded in BMC to a Windows file.

The "**Driver Kit Ver.xx-xx**" CD contains files needed for installing SEL Manager.

This manual describes the procedure for installing SEL Manager contained in the "**Driver Kit Ver.xx-xx**" CD.

The table below lists applicable hardware and operating systems.

Table 1-1

Applicable OS	Microsoft® Windows Server® 2008 R2 Standard* ¹
	Microsoft® Windows Server® 2008 R2 Enterprise* ¹
	Microsoft® Windows Server® 2008 R2 Datacenter* ¹
	Microsoft® Windows Server® 2008 R2 Foundation* ¹
*1: Only the 64-bit version is provided.	

Installation Procedure

This chapter describes how to install SEL Manager.

- [SEL Manager installation procedure](#)
- [Installation](#)

SEL Manager installation procedure

NOTICE

Installing SEL Manager

Be sure to install SEL Manager. Otherwise, the system might fail to detect an error and lose critical data or make the fault analysis unsuccessful.

Uninstalling SEL Manager

Do not uninstall SEL Manager. Uninstalling SEL Manager loses data that is collected by SEL Manager and is needed for the fault analysis. Further, uninstalling SEL Manager might cause the other Hitachi software to function erratically. In such a case, you must re-install the Hitachi software. You might lose your specific settings or data acquired by the Hitachi software.



- The SEL Manager program creates an installation file in the following folder. The C drive must be the system drive (OS installation drive).

C:\Program Files(x86)\Hitachi\SelManager

- If you do not install SEL Manager, the fault analysis might malfunction.
- If you use the SEL Manager program on Windows2008, do not install the following device (Driver).

Microsoft Generic IPMI Compliant Device (IPMIDRV)

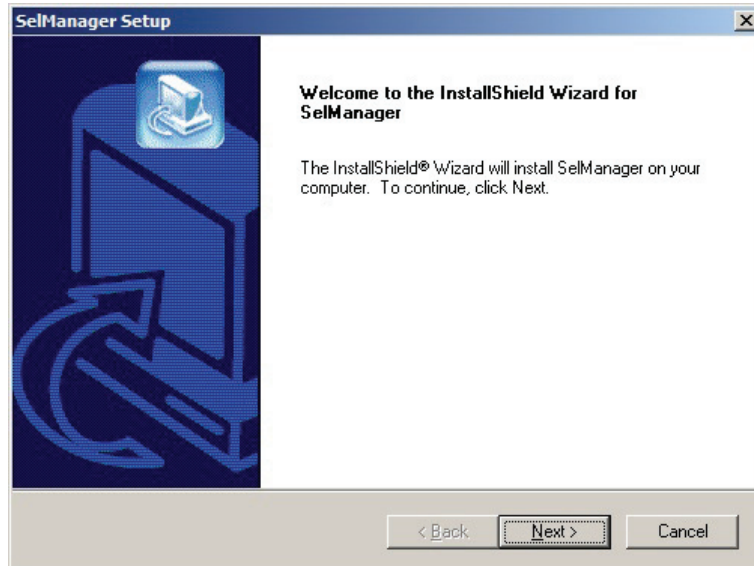
The SEL Manager program uses the same hardware resource as this device. If the device is active, the SEL Manager program does not operate normally.

Installation

1. Insert the "**Driver Kit Ver.xx-xx**" CD into the CD-ROM drive or the DVD-RAM drive.

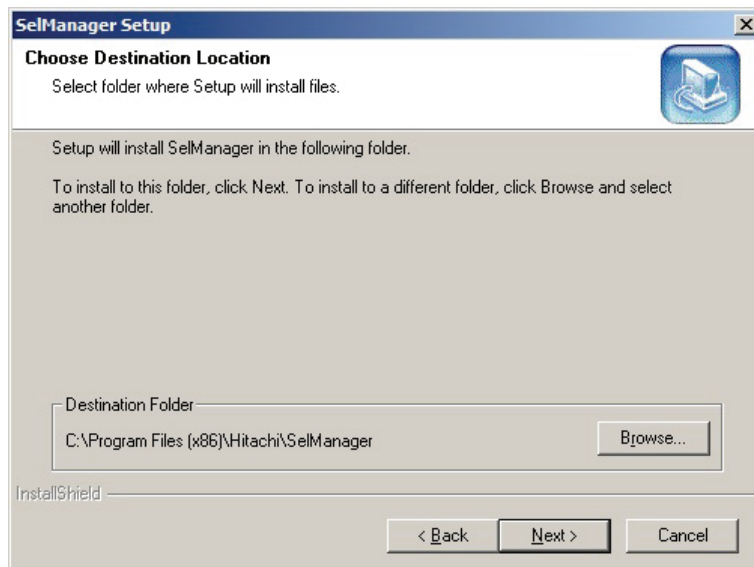
Double-click **\UTILITY\SelManager\SelManager_x64\setup.exe**.

2. The following window opens. Click **Next**.

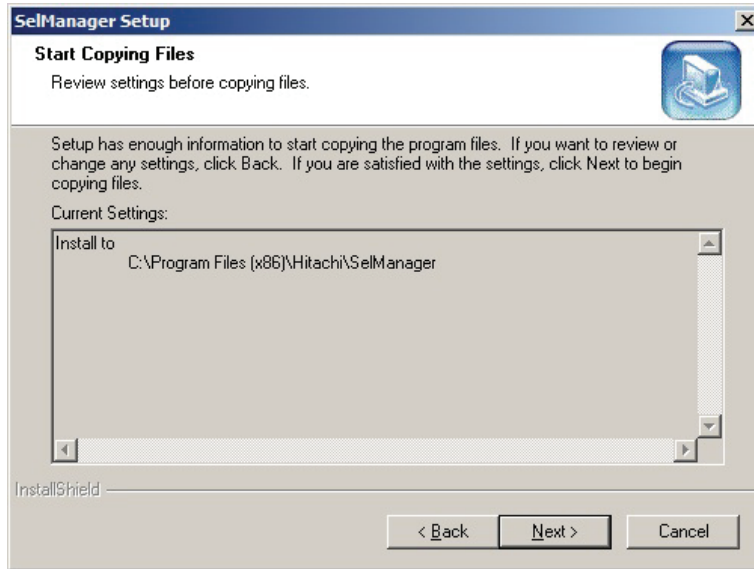


3. The following window opens. Click **Next**.

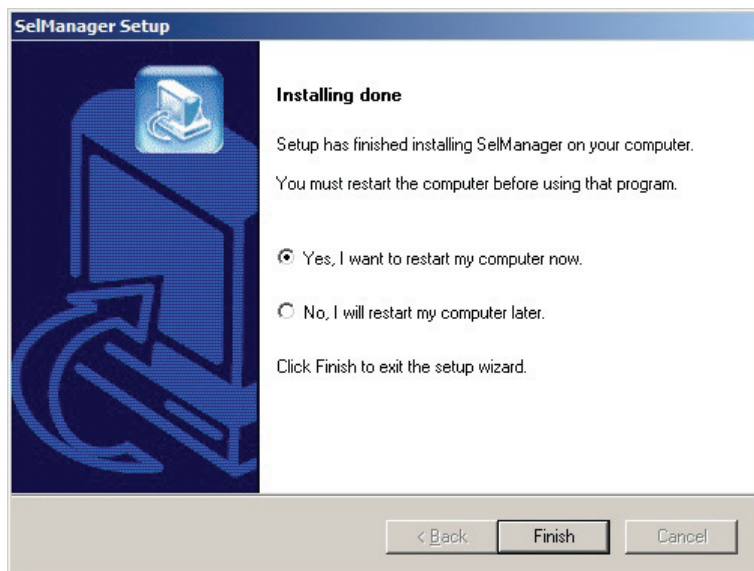
Do not change Destination Folder.



4. The following window opens. Click **Next**.



5. After the installation is complete, the following window opens. Check [**Yes, I want to restart my computer now.**] and click **Finish**. Restart the system.

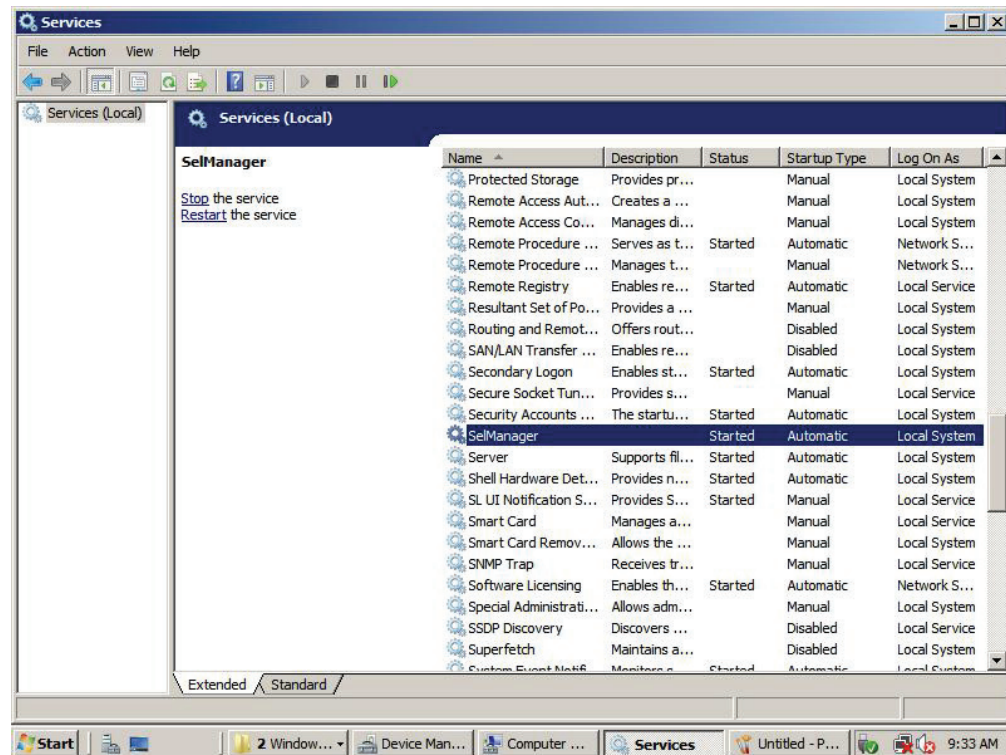


6. After the computer restarts successfully, the "SelManager" service is added as follows.

(Status: Started, Startup Type: Automatic)

Make sure that the "SelManager" service is added. You can do this by selecting **Start > Administrative Tools > Services** or **Start > Administrative Tools > Computer Management > Services and Applications > Services**.

Windows2008 R2



7. The SEL Manager program creates four installation files used for the program in the following folder:

C:\Program Files(x86)\Hitachi\SelManager



Do not edit, move, or delete these files.
Otherwise, the SEL Manager program might malfunction.

Table 2-1: Installation Files

No	Installation File	Content	Remarks
1	SelManager.exe	Executable program	
2	SelManager.inf	Work file	
3	SelManager.log	Error log file	
4	SelManager.conf	Configuration file	
5	Ipmi_sel.log	SEL information file	
6	BMCLAN.dll	LAN access library	
7	editconf.exe	Setting program	
8	ipmitl.exe	IPMI access tool	
9	pwconv.exe	Analysis program	
10	version	version info	

Starting and Stopping the Service

This chapter describes how to manually stop and start the SEL Manager service.

- [Procedures for stopping and starting the SEL Manager service](#)

Procedures for stopping and starting the SEL Manager service

Stopping the SEL Manager service

The stop procedure further includes procedure 1 for stopping and disabling the service and procedure 2 for stopping and disabling the driver.

Procedure 1: Stopping and disabling the service

- (1) Select **Start > Administrative Tools**, and **Computer Management**.
- (2) On the Computer Management screen, select **Services and Applications** and **Services**.
- (3) Select "SelManager", then click **Action** menu and select **Properties**.
- (4) Select the **General** tab on the Property window of SelManager. If **Service status** is not **Stop**, click **Stop**.
- (5) If **Startup Type** is not **Disabled** in the **General** tab, select **Disabled** and then click **OK**.
- (6) Restart the system unit.

Procedure 2: Stopping and disabling the driver

- (1) Select **Start, Administrative Tools** and **Computer Management**.
- (2) On the Computer Management window, select **System Tools** and **Device Manager**.
- (3) On the **View** menu, click **Show hidden devices**.
- (4) Select **Non-Plug and Play Drivers**, and **PltfDrv**, then on the **Action** menu, click **Properties**.
- (5) Select the **Driver** tab on the Property screen of PltfDrv. If **Current State** is not **Stop**, click **Stop**.
- (6) If **Startup** is not **Disabled** in the **Driver** tab, select **Disabled** and then click **OK**.
- (7) Restart the system unit.

Starting the SEL Manager service

The start procedure further includes procedure 1 for automating and starting the driver and procedure 2 for automating and starting the service.

Procedure 1: Automating and starting the driver

- (1) Select **Start, Administrative Tools** and **Computer Management**.
- (2) On the Computer Management screen, select **System Tools** and **Device Manager**.
- (3) On the **View** menu, click **Show hidden devices**.
- (4) Select **Non-Plug and Play Drivers** and **PltfDrv**, then on the **Action** menu, click **Properties**.
- (5) Select the **Driver** tab on the Property window of PltfDrv. If **Startup** is not **System**, select **System** and then click **OK**.
- (6) Reopen the Property window of PltfDrv. Select the **Driver** tab. If **Current State** is not **Start**, click **Start**.
- (7) Click **OK**.

Procedure 2: Automating and starting the service

- (1) Select **Start, Administration Tools** and **Computer Management**.
- (2) On the Computer Management screen, select **Services and Applications** and **Services**.
- (3) Select "SelManager", then on the **Action** menu, click **Properties**.
- (4) Select the **General** tab on the Property window of SelManager. If **Startup Type** is not **Automatic**, select **Automatic** and then click **Apply**.
- (5) If **Service status** is not **Start** in the **General** tab, click **Start**.
- (6) Click **OK**.

(This page is intentionally left blank.)

Hitachi Data Systems

Corporate Headquarters

750 Central Expressway
Santa Clara, California 95050-2627
U.S.A.
Phone: 1 408 970 1000
www.hds.com
info@hds.com

Asia Pacific and Americas

750 Central Expressway
Santa Clara, California 95050-2627
U.S.A.
Phone: 1 408 970 1000
info@hds.com

Europe Headquarters

Sefton Park
Stoke Poges
Buckinghamshire SL2 4HD
United Kingdom
Phone: + 44 (0)1753 618000
info.eu@hds.com



MK-90CRH010-00