



Hitachi Storage Array Management Pack

User's Guide

FASTFIND LINKS

[Software Version](#)

[Getting Help](#)

[Contents](#)

Copyright © 2009 Hitachi Data Systems Corporation, ALL RIGHTS RESERVED

Notice: No part of this publication may be reproduced or transmitted in any form or by any means, electronic or mechanical, including photocopying and recording, or stored in a database or retrieval system for any purpose without the express written permission of Hitachi Data Systems Corporation (hereinafter referred to as "Hitachi Data Systems").

Hitachi Data Systems reserves the right to make changes to this document at any time without notice and assumes no responsibility for its use. Hitachi Data Systems products and services can only be ordered under the terms and conditions of Hitachi Data Systems' applicable agreements. All of the features described in this document may not be currently available. Refer to the most recent product announcement or contact your local Hitachi Data Systems sales office for information on feature and product availability.

This document contains the most current information available at the time of publication. When new and/or revised information becomes available, this entire document will be updated and distributed to all registered users.

Hitachi, the Hitachi logo, and Hitachi Data Systems are registered trademarks and service marks of Hitachi, Ltd. The Hitachi Data Systems logo is a trademark of Hitachi, Ltd.

Microsoft® is a registered trademark of Microsoft Corporation.

All other brand or product names are or may be trademarks or service marks of and are used to identify products or services of their respective owners.



Contents

| | |
|--|----|
| Preface | iv |
| Intended Audience | iv |
| Software Version | iv |
| Document Revision Level | iv |
| Getting Help | v |
| Comments | v |
| Installing and Configuring the Hitachi Storage Array Management Pack | 1 |
| Overview of the Storage Array Management Pack | 2 |
| Supported Operating Systems | 2 |
| Installation Prerequisites | 2 |
| System Configuration Overview | 3 |
| Configuring the SCOM Server | 3 |
| Installing the Management Pack | 4 |
| Navigating the SCOM GUI | 4 |
| Configuring the SCOM Connector | 5 |
| Uninstalling the Management Pack | 7 |



Preface

This document describes how to use the Hitachi Storage Array Management Pack.

This preface includes the following information:

- ☐ [Intended Audience](#)
- ☐ [Software Version](#)
- ☐ [Document Revision Level](#)
- ☐ [Getting Help](#)
- ☐ [Comments](#)

Notice: The use of Hitachi Storage Array Management Pack and all other Hitachi Data Systems products is governed by the terms of your agreement(s) with Hitachi Data Systems.

Intended Audience

This document provides information for System Administrators that install and configure the Hitachi Storage Array Management Pack. Refer to this product's release notes for additional information.

Software Version

This document revision applies to Hitachi Storage Array Management Pack version 2.1.0 or higher.

Document Revision Level

| Revision | Date | Description |
|----------------|------------|---------------------|
| MK-09DF8195-00 | March 2009 | Preliminary Release |

Getting Help

The Hitachi Data Systems Support Center staff is available 24 hours a day, seven days a week. To reach us, please visit the support Web site for current telephone numbers and other contact information:

<http://www.hds.com/services/support/>. If you purchased this product from an authorized HDS reseller, contact that reseller for support.

Before calling the Hitachi Data Systems Support Center, please provide as much information about the problem as possible, including:

- The circumstances surrounding the error or failure.
- The exact content of any error message(s) displayed on the host system(s).

Comments

Please send us your comments on this document. Make sure to include the document title, number, and revision. Please refer to specific section(s) and paragraph(s) whenever possible.

- **E-mail:** doc.comments@hds.com
- **Fax:** 858-695-1186
- **Mail:**
Technical Writing, M/S 35-10
Hitachi Data Systems
10277 Scripps Ranch Blvd.
San Diego, CA 92131

Thank you! (All comments become the property of Hitachi Data Systems Corporation.)



Installing and Configuring the Hitachi Storage Array Management Pack

This document discusses installing and configuring the Hitachi Storage Array Management Pack. The following topics are discussed:

- ❑ [Overview of the Storage Array Management Pack](#)
- ❑ [Supported Operating Systems](#)
- ❑ [Installation Prerequisites](#)
- ❑ [System Configuration Overview](#)
- ❑ [Configuring the SCOM Server](#)
- ❑ [Installing the Management Pack](#)
- ❑ [Navigating the SCOM GUI](#)
- ❑ [Configuring the SCOM Connector](#)
- ❑ [Uninstalling the Management Pack](#)

Overview of the Storage Array Management Pack

System Center Operations Manager (SCOM), is a performance and event monitoring product for Microsoft Windows operating systems. The Hitachi Storage Array Management pack integrates with the SCOM server to report and monitor the Hitachi Storage Arrays managed by the HDvM servers.

The management pack provides the following object views that are displayed inside the Monitoring pane (under "Hitachi Storage" root) of the Operations Manager console.

- **Subsystem** → displays all the arrays managed by the HDvM server.
- **Array Group** → displays all the Array groups for the discovered storage arrays.
- **HDvM Server** → displays all the HDvM servers.
- **LUN** → Displays all the LUN information for the discovered storage arrays.

Health of a subsystem is monitored based on the status of the physical components of the subsystem.

Supported Operating Systems

Hitachi Storage Array Management Pack runs on the following operating systems:

- Microsoft Windows Server 2003 SP2
- Microsoft Windows Server 2003 R2 SP2
- Microsoft Windows Server 2008

Installation Prerequisites

You must install the following items and verify they are running properly before using Hitachi Storage Array Management Pack:

- Microsoft System Center Operations Manager 2007 SP1
- Microsoft .NET Framework 3.5
- Hitachi HiCommand Device Manager 5.8 or higher. HDvM needs to be configured to access/manage the Hitachi storage arrays. Please refer to the HDvM user guides for details.
- The HDvM server must be discovered and agent-managed by the SCOM.
- During the installation, you must provide an account user name and password for the connector service. Refer to [Configuring the SCOM Server](#).

System Configuration Overview

The system configuration consists of the following servers connected to the same network:

- A server with SCOM 2007 SP1
- A server with Hitachi Device Manager (HDvM)

Figure 1 illustrates the configuration.

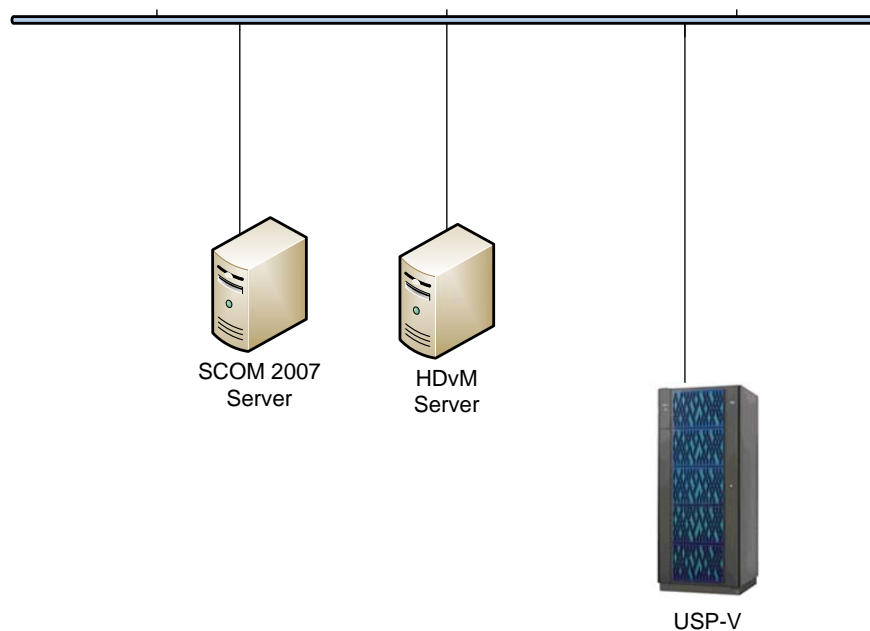


Figure 1 System Configuration Diagram

Configuring the SCOM Server

In the SCOM server, add a user account to the Operations Manager Administrator user role. You can add the user account by navigating to the Administration view of the SCOM console.

Installing the Management Pack

You must perform the installation on the HDvM server.

To install the management pack:

1. Confirm whether a user account is added to the SCOM Administrators user role.
2. Run the `hds-scomconn-setup.msi` file. The binaries install in the default directory `<Program Files folder>\Hitachi Data Systems\Hitachi SCOM Connector`. The SCOM management pack will be imported into the management group by the connector service on startup.
3. In the Set Service Login dialog, provide the user account information that is a member of the Operations Manager Administrators user role. See Figure 2.

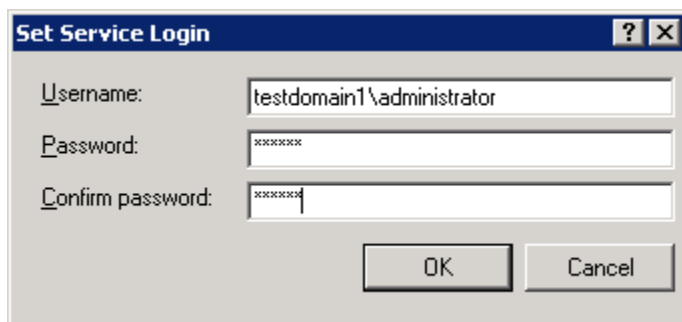


Figure 2 Set Service Login Window

Navigating the SCOM GUI

The Hitachi Storage view can be seen from the Monitoring View of the SCOM Console. See Figure 3.

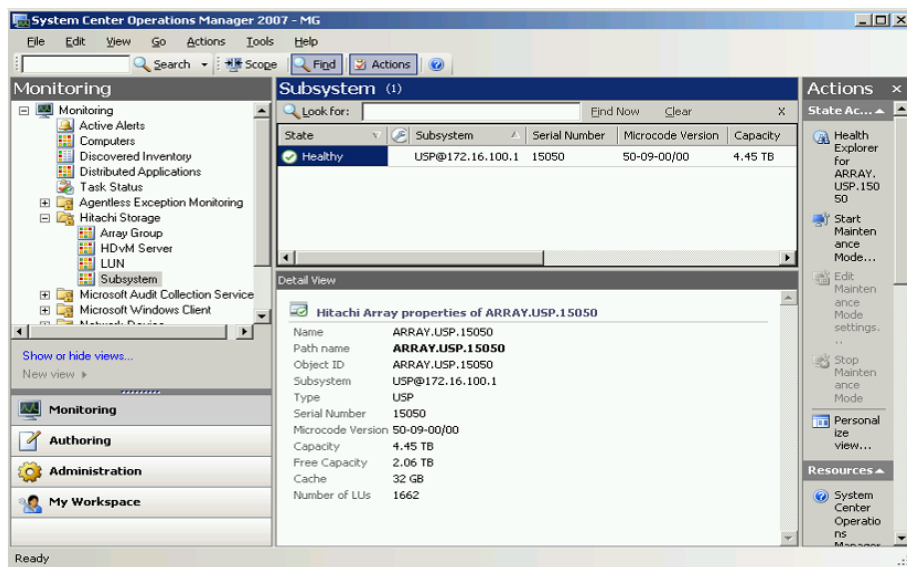


Figure 3 Monitoring View of the SCOM Console

You can click on any of the other objects to see object specific views.

Configuring the SCOM Connector

To configure the SCOM Connector:

1. Run Hitachi SCOM Connector Manager in **Start→All Programs→Hitachi SCOM Connector**. See Figure 4.

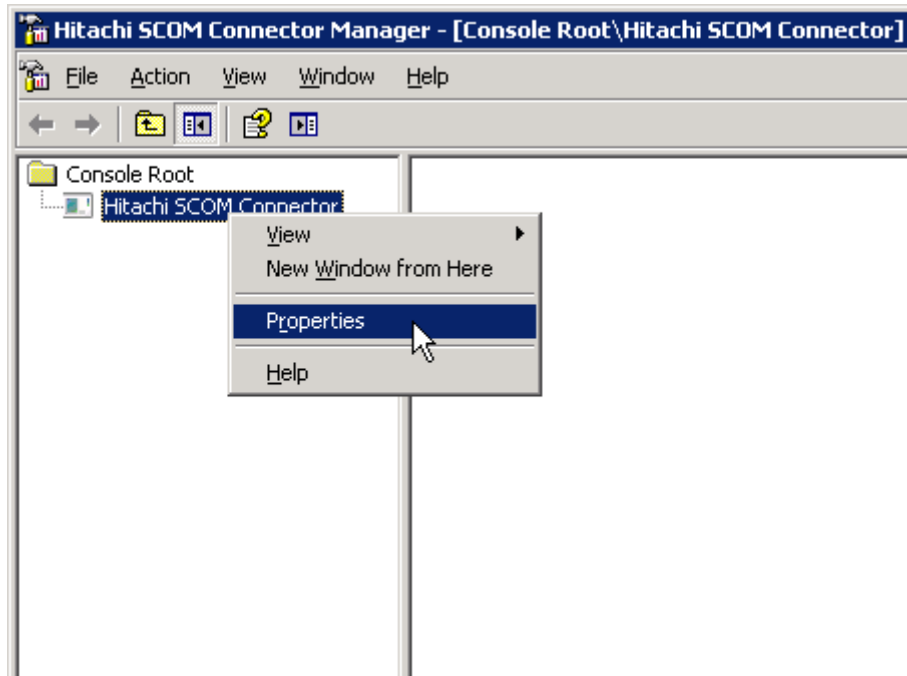


Figure 4 Hitachi SCOM Connector Manager Window

2. Right click on the **Hitachi SCOM Connector** node and select **Properties**. See Figure 5.

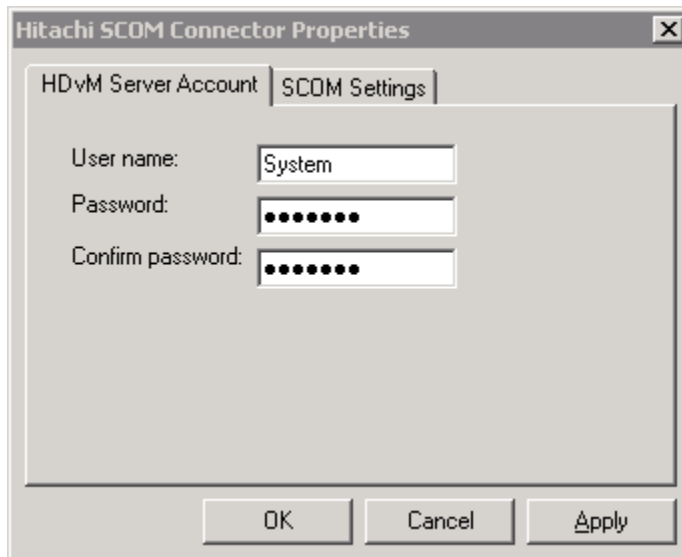


Figure 5 SCOM Connector Properties

3. Specify the HDvM account user name and password. The default user name is "System" and password is "manager".
4. Specify the SCOM Server address. See Figure 6.

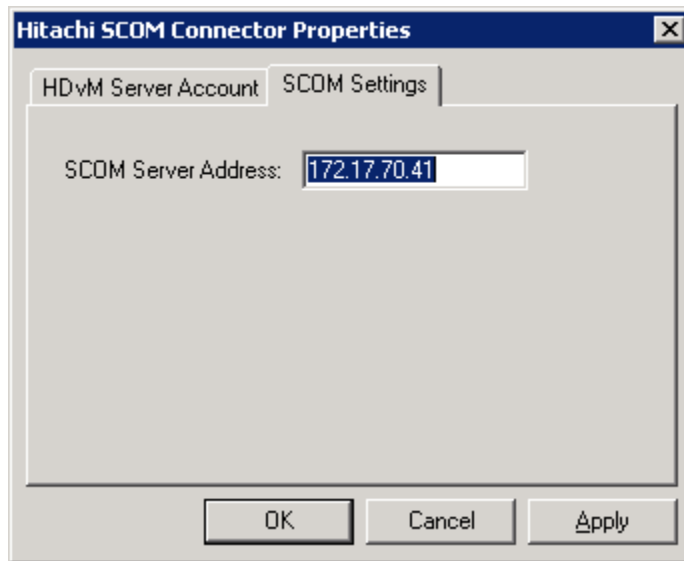


Figure 6 Connector Properties Window

Uninstalling the Management Pack

1. Navigate to **Add/Remove Programs**, and uninstall the Hitachi SCOM Connector from the HDvM server.
2. Delete the Hitachi Storage Array Management pack from the SCOM Operations Console (**Administration**→**Management Packs**).

Hitachi Data Systems

Corporate Headquarters

750 Central Expressway
Santa Clara, California 95050-2627
U.S.A.
Phone: 1 408 970 1000
www.hds.com
info@hds.com

Asia Pacific and Americas

750 Central Expressway
Santa Clara, California 95050-2627
U.S.A.
Phone: 1 408 970 1000
info@hds.com

Europe Headquarters

Sefton Park
Stoke Poges
Buckinghamshire SL2 4HD
United Kingdom
Phone: + 44 (0)1753 618000
info.eu@hds.com



MK-09DF8195-00