

EASY MAINTENANCE SECTION

Contents

EASYMNT01-10	1. HDD EASY REPLACE
EASYMNT01-10	1.1 How to operate the SVP (PC)
EASYMNT01-10	1.1.1 How to use Windows
EASYMNT01-40	1.1.2 Connecting the PC to the SVP
EASYMNT01-40	1.1.2.1 Connection to the SVP
EASYMNT01-60	1.1.3 Disconnecting the SVP
EASYMNT01-70	1.2 HDD Easy Replacement function
EASYMNT01-70	1.2.1 Procedure for HDD easy replacement
EASYMNT01-150	1.2.2 Action when any error or failure occurs
EASYMNT01-160	1.3 Hardware operations
EASYMNT01-160	1.3.1 Attaching the Wrist Strap
EASYMNT01-170	1.3.2 Bezel Opening-Closing Procedure
EASYMNT01-220	1.3.3 Procedure to open and close the FAN door
EASYMNT01-220	1.3.3.1 In case of 3.5inch/2.5inch drive
EASYMNT01-220	1.3.3.2 In case of FMD
EASYMNT01-230	1.3.4 Setting of Stopper for FAN Door
EASYMNT01-250	1.3.5 Procedure to confirm Shut Down LED
EASYMNT01-250	1.3.5.1 Check the Shut Down LED
EASYMNT01-250	1.3.5.1.1 In case of 3.5inch/2.5inch drive
EASYMNT01-270	1.3.5.1.2 In case of FMD
EASYMNT01-280	1.3.6 Procedure to Replace HDD
EASYMNT01-280	1.3.6.1 Remove the drive
EASYMNT01-280	1.3.6.1.1 In case of 3.5inch drive
EASYMNT01-290	1.3.6.1.2 In case of 2.5inch drive
EASYMNT01-310	1.3.6.1.3 In case of FMD
EASYMNT01-320	1.3.6.2 Check and handling of the drive
EASYMNT01-330	1.3.6.3 Install the drive
EASYMNT01-340	1.3.6.3.1 In case of 3.5inch/2.5inch drive
EASYMNT01-350	1.3.6.3.2 In case of FMD
EASYMNT02-10	2. Reset Microprocessor
EASYMNT02-10	2.1 How to operate the SVP (PC)
EASYMNT02-10	2.1.1 How to use Windows
EASYMNT02-40	2.1.2 Connecting the PC to the SVP
EASYMNT02-40	2.1.2.1 Connection to the SVP
EASYMNT02-60	2.1.3 Disconnecting the SVP
EASYMNT02-70	2.2 Reset Microprocessor
EASYMNT02-70	2.2.1 Checking of MP location
EASYMNT02-80	2.2.2 Procedure for MP resetting

1. HDD EASY REPLACE

1.1 How to operate the SVP (PC)

1.1.1 How to use Windows

(1) <Notation>

In this manual, “select” has the following meaning, and “(CL)”, “(DC)”, or “(DR)” is added to the word for each meaning.

- (CL) Click : Quickly press and release the left side button of mouse.
- (DC) Double-click : Click the left side button of mouse twice in rapid succession.
- (DR) Drag : To hold down the left side button of mouse while you trace the mouse to move the pointer to a desired position. Then release the button.

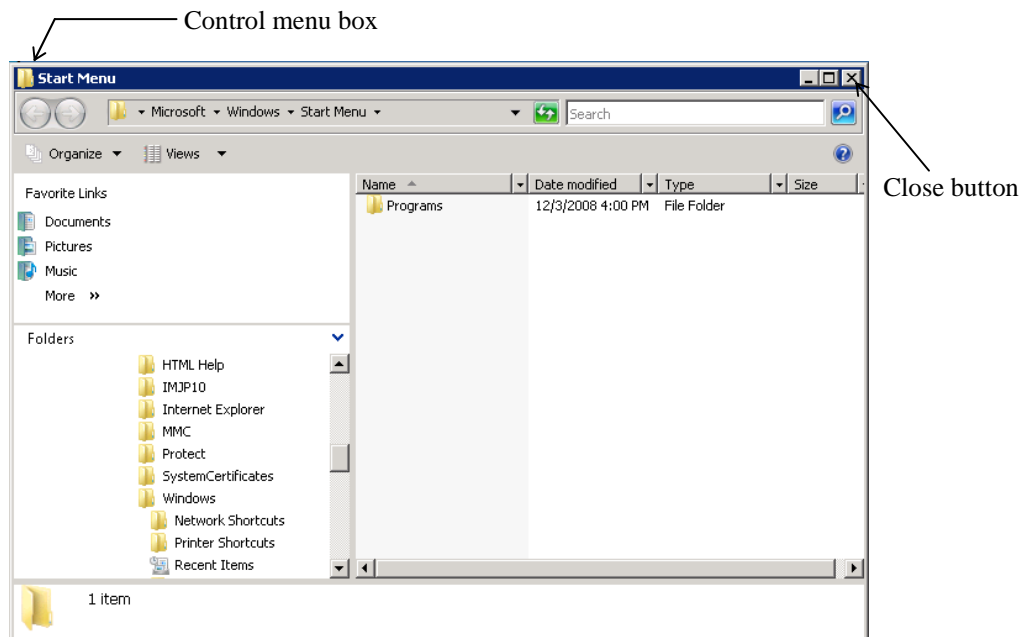
Example: Select (CL) the [Guidance] icon in the ‘RAID Maintenance Viewer’ window.

Move the pointer to [Guidance] with the mouse. Then quickly press and release the left side button of mouse.

(2) <Close>

“Close” means to close the application window.

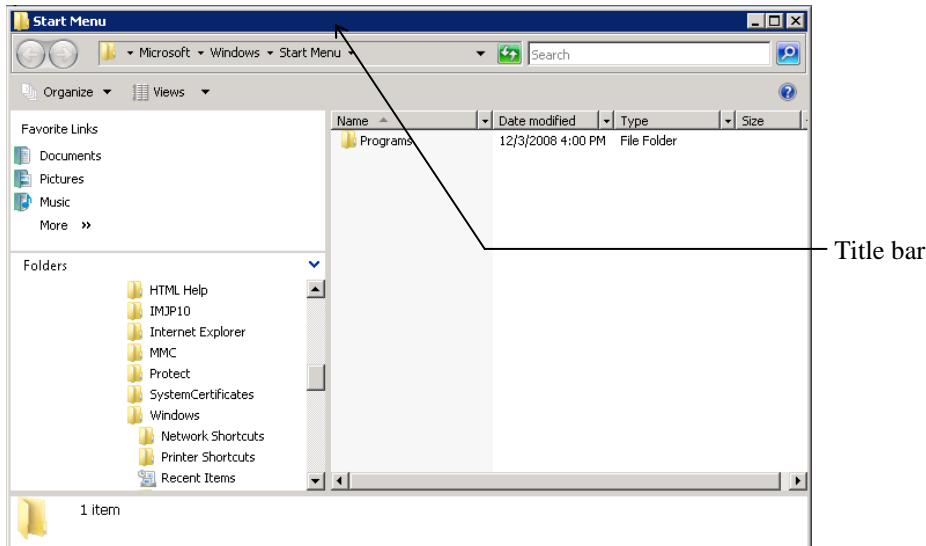
(Double-click the control menu box of the window or click the close button for window.)



(3) <Moving the Window>

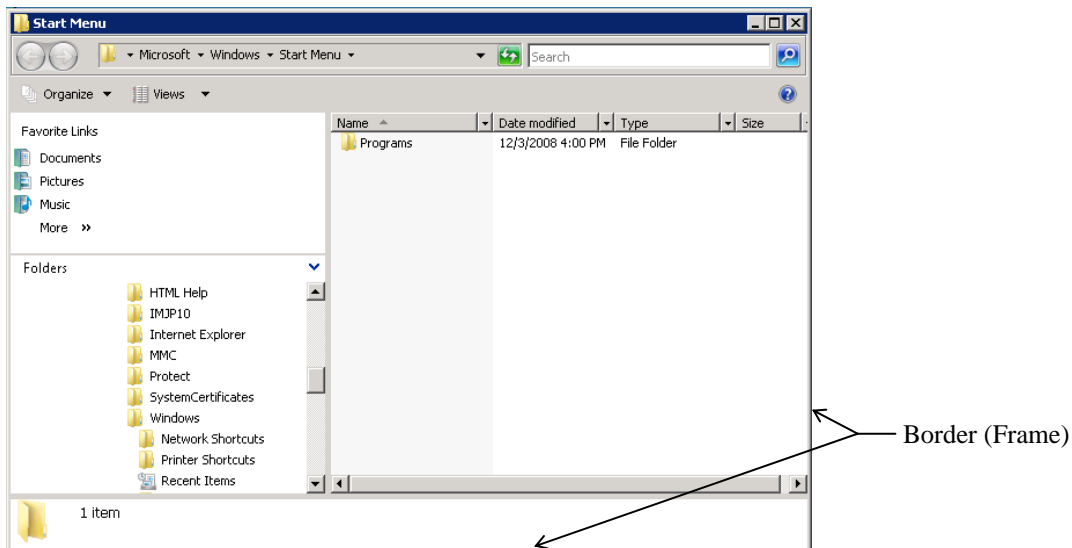
Move the pointer to the title bar with the trackball.

While pressing the button, move the window with the trackball or touchpad (DR) to a desired position and release the button.



(4) <Changing the window size>

Move the pointer to the window border (frame) (the pointer changes to the double-headed arrow). While pressing the button, move the border (the border changes to the broken line) until the window becomes a desired size, and release the button.



- (5) <Switching the screen (when two or more screens are opened)>

While pressing the [ALT] key, press [TAB] key (or [ESC] key) until your desired window title is displayed, and release the [ALT] key.

1.1.2 Connecting the PC to the SVP

In order to connect to SVP (PC), execute remote desktop connection and perform the following procedures from a console PC.

1.1.2.1 Connection to the SVP

- (1) <Performing remote desktop connection>
Select (CL) [Run...] from the [Start] menu.
Enter “mstsc.exe” in the “Open” box, and
select (CL) the [OK] button.



- (2) <Performing the connection>
Enter IP address or host name of the SVP
(PC), and select (CL) the [Connect] button.



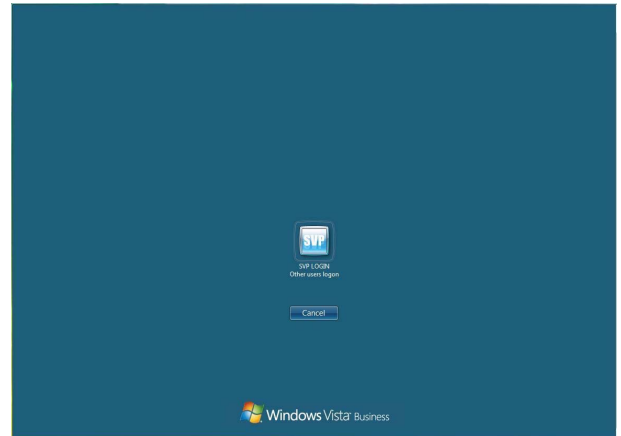
Note: Please check that automatic connection of a local disk drive is set up in the case of connection. Confirmation procedure is as follows.

- (a) Select (CL) the [Options] button, and
select (CL) the “Local Resources” tab in
the ‘Remote Desktop Connection’
window.
- (b) Confirm that the “Disk drives” is
checked.

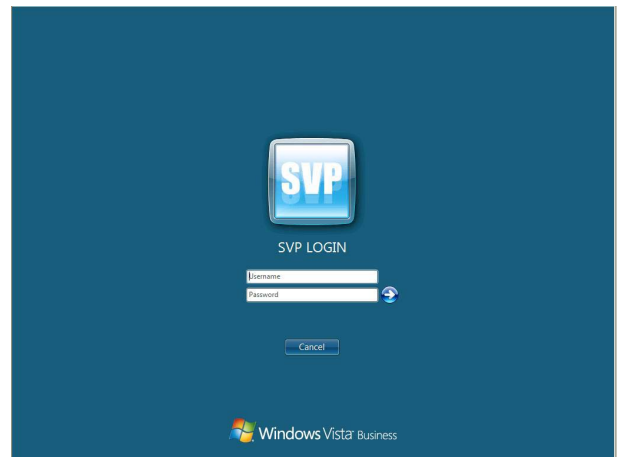


(3) <Performing logon>

Select (CL) SVP icon displayed in the middle of the window, and a window appears to enter user name and password.



Enter user name and password and click the [→] button to logon to the SVP (PC).



1.1.3 Disconnecting the SVP

Disconnect the Console PC from the SVP.

(1) <Log off SVP>

Select (CL) [Log Off] from the [Start] menu.



1.2 HDD Easy Replacement function

1.2.1 Procedure for HDD easy replacement

(1) <Connection to the SVP>

Connect to SVP using remote desktop connection from a console PC.

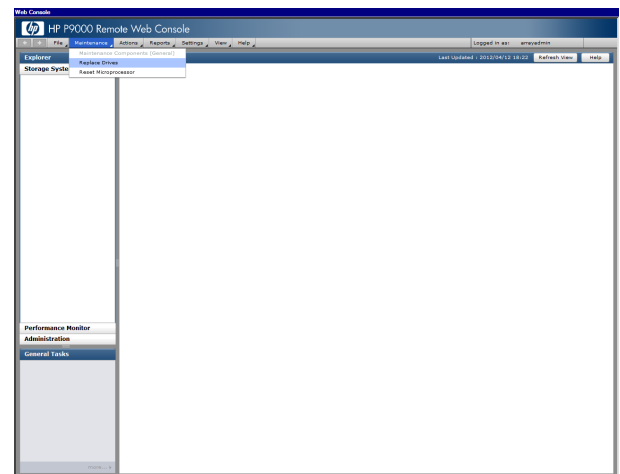
For details, see “1.1.2 Connecting the PC to the SVP”.

Enter user name and password of user maintenance personnel account, and select (CL) the [→] button.

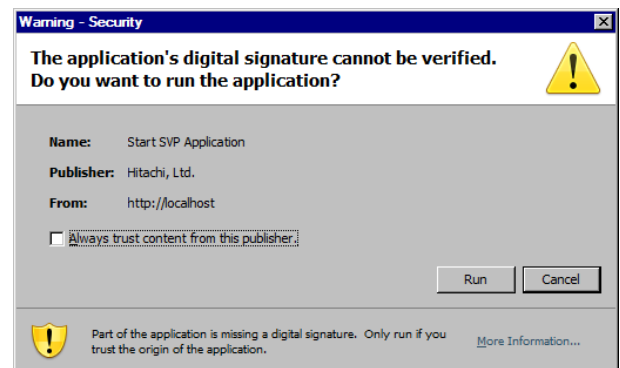


(2) <Starting a window>

Select (CL) [Maintenance]-[Replace Drives] from menu in the ‘Web Console’ window.

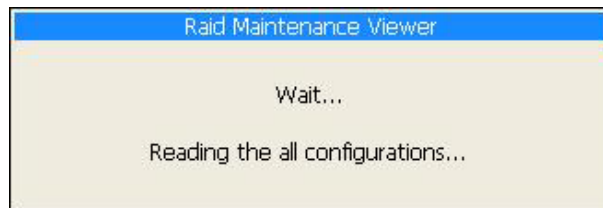


This screen will not be displayed from the next startup when you check the check box of “Always trust content from this publisher.” and select (CL) [Yes].



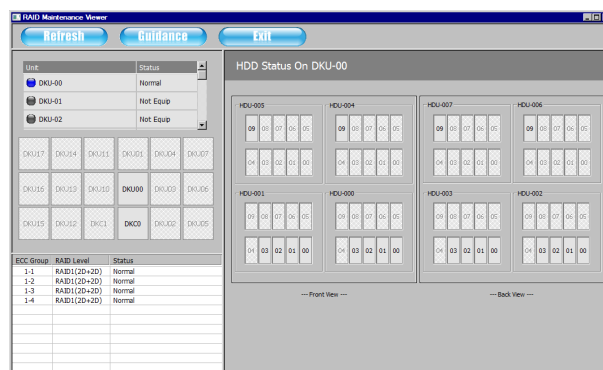
(3) <Confirming starting condition>

The following message appears.
“Wait...”



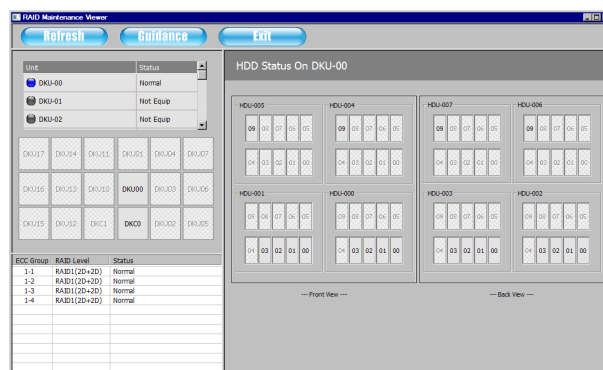
(4) <Confirming starting window>

‘RAID Maintenance Viewer’ window appears.

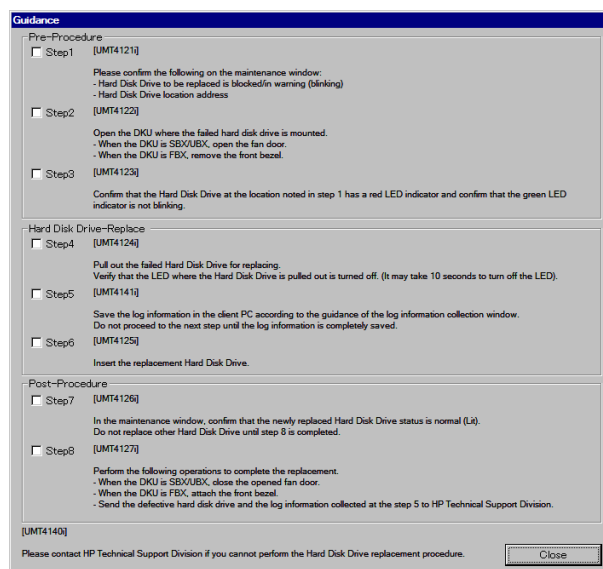


(5) <Display Guidance>

Select (CL) the [Guidance] button on the ‘RAID Maintenance Viewer’ window.



Perform HDD easy replacement according to instruction displayed in the ‘Guidance’ window.



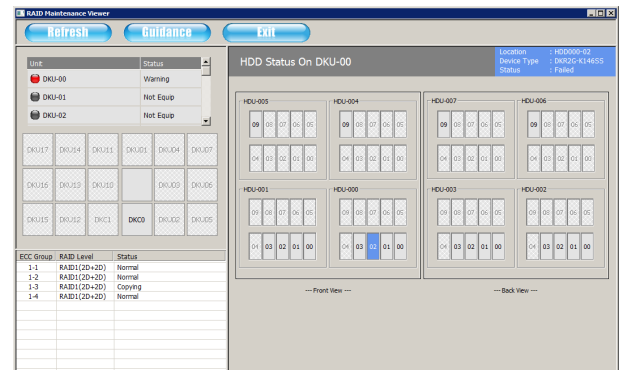
! CAUTION

- (1) Before starting the operation, each worker must wear a wrist strap on his/her wrist to prevent IC and LSI on the package from static electricity.
For information on how to wear a wrist strap, see “1.3.1 Attaching the Wrist Strap”.
- (2) Do not give an impact or vibration on HDD as it is precision part.

- (6) <Step1: Confirming HDD to be replaced>
Confirm that the HDD to be displayed is indicated blinking in the ‘RAID Maintenance Viewer’ window.

Confirm the location to mount the HDD on the ‘RAID Maintenance Viewer’ window.

If the operation is completed, select (CL) the [Step1] on the ‘Guidance’ window and go to “<Step2 Opening the DKU>”.



- (7) <Step2: Opening the DKU>
Open the DKU where the failed HDD is mounted.
 - When the DKU is SBX/UBX, open the FAN door.
 - When the DKU is FBX, remove the Front Bezel.

For procedure to remove the Front Bezel, see “1.3.2 Bezel Opening-Closing Procedure”.

For procedure to open and close the FAN door, see “1.3.3 Procedure to open and close the FAN door”.

If the operation is completed, select (CL) the [Step2] on the ‘Guidance’ window and go to “<Step3: Confirming LED>”.

- (8) <Step3: Confirming LED>
Confirm that a LED of the HDD to be replaced is lighting up red and the LED is not blinking in green.

For information how to confirm LED, see “1.3.5 Procedure to confirm Shut Down LED”.

If the operation is completed, select (CL) the [Step3] on the ‘Guidance’ window and go to “<Step4: Removing HDD>”.

(9) <Step4: Removing HDD>

Remove a HDD.

For information how to remove HDD, see “1.3.6 Procedure to Replace HDD”.

Confirm that a LED of the removed HDD is turned off.

For information how to confirm LED, see “1.3.5 Procedure to confirm Shut Down LED”.

Note: It may take about 10 seconds for LED to be turned off after removing the HDD.

If the operation is completed, select (CL) the [Step4] on the ‘Guidance’ window and go to “<Step5: Collecting log>”.

(10) <Step5: Collecting log>

Log information can be collected in accordance with the following procedure.



CAUTION

Make sure to perform <Step5: Collecting log> before performing <Step6: Inserting HDD>.

The log information to be collected by this step is essential to investigate hardware failures.

Select (CL) the [Ok] button on the ‘FFI’ window without entering anything.

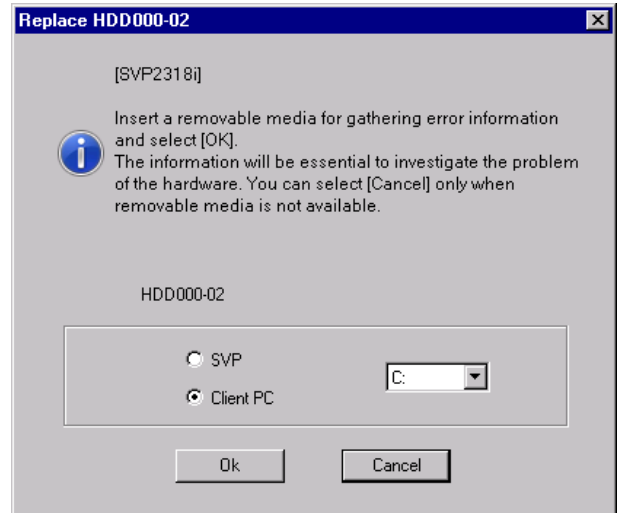
Note: If the ‘FFI’ window is not displayed, hold down the [Alt] and the [Tab] key until the window is displayed.

Date Time :	05/26/2010 15:22:46
Failure parts name :	HDD
Failure parts location :	HDD000-02
Full Serial Number :	wwwwww64532
CS0# :	<input type="text"/>
SIM/SSB :	<input type="text"/>
Failure Description :	<input type="text"/>

Ok Cancel

“Insert a removable media for gathering error information and select [OK]. The information will be essential to investigate the problem of the hardware. You can select [Cancel] only when removable media is not available.” is displayed.

Select a Client PC arbitrary drive, and select (CL) [Ok].

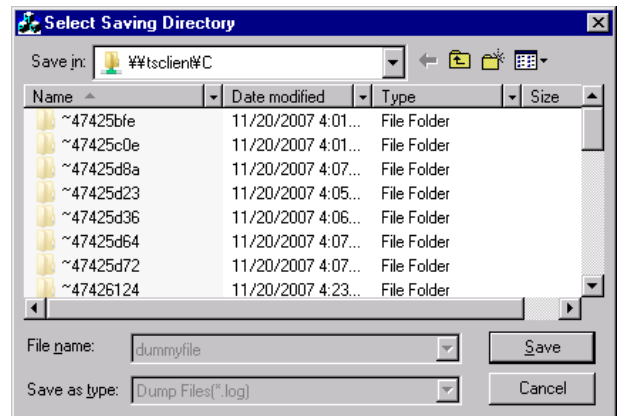


When Client PC is selected, the directory selection dialog is displayed.

Please select an arbitrary directory if necessary.

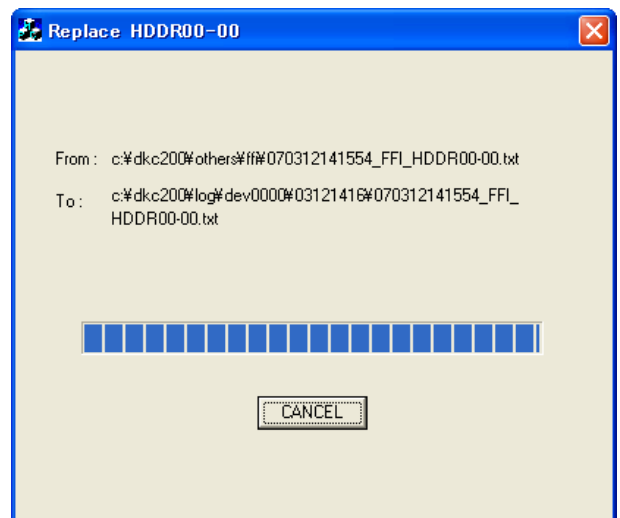
Select (CL) [Save] when saving a file in a specified directory.

It returns to the drive selection screen when [Cancel] is selected (CL).



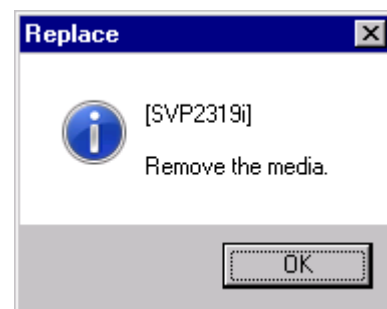
<Copy of the error information>

The error information is copied onto media.



EASYMNT01-120

“Remove the media.” is displayed.
Select (CL) [OK].



Note: Do not insert HDD until storing the log information is completed. Otherwise the log information may not be normally stored.

If the operation is completed, select (CL) [Step5] on the ‘Guidance’ window and go to the “<Step6: Inserting HDD>”.

(11) <Step6: Inserting HDD>

Insert new HDD in a place where an HDD has been removed.

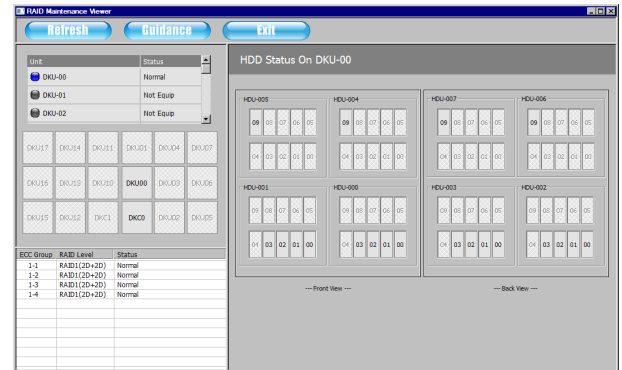
For procedure to insert HDD, see “1.3.6 Procedure to Replace HDD”.

If the operation is completed, select (CL) the [Step6] on the ‘Guidance’ window and go to the “<Step7: Confirming the completion of replacement>”.

(12) <Step7: Confirming the completion of replacement>

Select (CL) the [Refresh] button on the ‘RAID Maintenance Viewer’ window, and confirm that the replaced HDD is indicated lighting.

If the HDD is not lighting, select (CL) [Refresh] button again after a few minutes, and confirm lighting of the HDD.



Note: Do not replace another HDD until “<Step:8 Post-processing of replacement>” is completed.

If the operation is completed, select (CL) the [Step7] on the ‘Guidance’ window and go to the “<Step8: Post-processing of replacement>”.

(13) <Step8: Post-processing of replacement>

Close the opened the DKU.

- When the DKU is SBX/UBX, close the opened fan door.
- When the DKU is FBX, attach the Front Bezel.

For procedure to attach the Front Bezel, see “1.3.2 Bezel Opening-Closing Procedure”.

For procedure to open and close the FAN door, see “1.3.3 Procedure to open and close the FAN door”.

Send the removed HDD and the log information stored in the client PC to the support center.

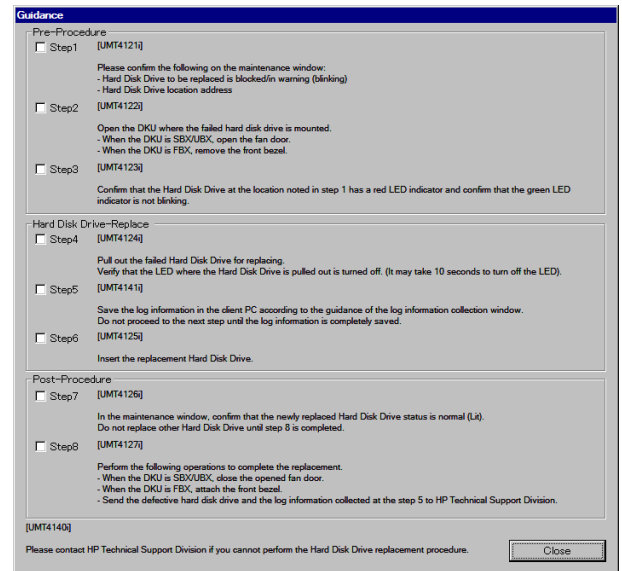
If the operation is completed, select (CL) the [Step8] on the ‘Guidance’ window.

(14) <Confirming the completion>

Confirm that from the [Step1] to the [Step8] are checked on the ‘Guidance’ window. If any of steps are not checked, perform all steps from “<Step1: confirming HDD to be replaced>” again.

(15) <Post-processing>

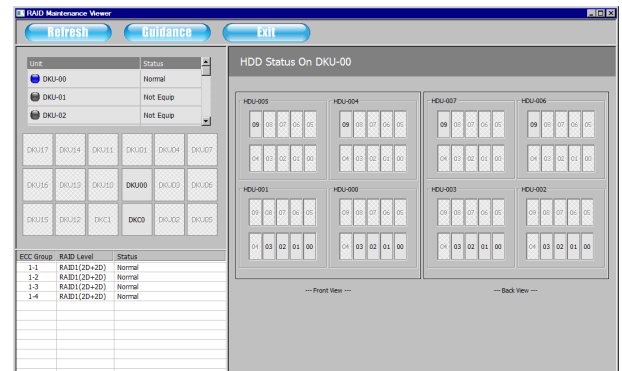
Select (CL) the [Close] button on the ‘Guidance’ window to close.



Select (CL) the [Exit] button on the ‘RAID Maintenance Viewer’ window.

Note: The window cannot be shut until FAN door close.

Please contact the support center when the window cannot close even if FAN door is close.



Log off the SVP.

For logoff, see “1.1.3 Disconnecting the SVP”.

EASYMNT01-150**1.2.2 Action when any error or failure occurs**

If a warning, a failure, or other error status is displayed on screen, or if an operation in accordance with procedure displayed on the 'Guidance' window cannot be normally done, contact the support center to ask for instructions.

1.3 Hardware operations

1.3.1 Attaching the Wrist Strap

- In order to protect parts from the electrostatic discharge, every worker must put a wrist strap on his/her wrist before starting installation or maintenance work and start the work after connecting the grounding clip to a metallic portion of the frame. (The wrist strap must be put on when connecting the LAN, RS232C or channel interface cable.)
- When handling a part, hold it in the way that fingertips of the hand putting the wrist strap on touch a metallic portion of the part.
(The above is necessary in order to discharge the charged static electricity and prevent a charge caused by handling.)
- Be sure to keep the wrist strap close to the subsystem.
- Be sure to touch the subsystem with the wrist strap put on. If you touch the subsystem without putting on the wrist strap, the static electricity charged on your body flows to the subsystem in an instant because no resistance exists between your body and the subsystem causing a subsystem trouble.
- Wear a wrist strap until the work is finished when working with the door of device or the platter cover open (for change of channel interface cable connection etc.).

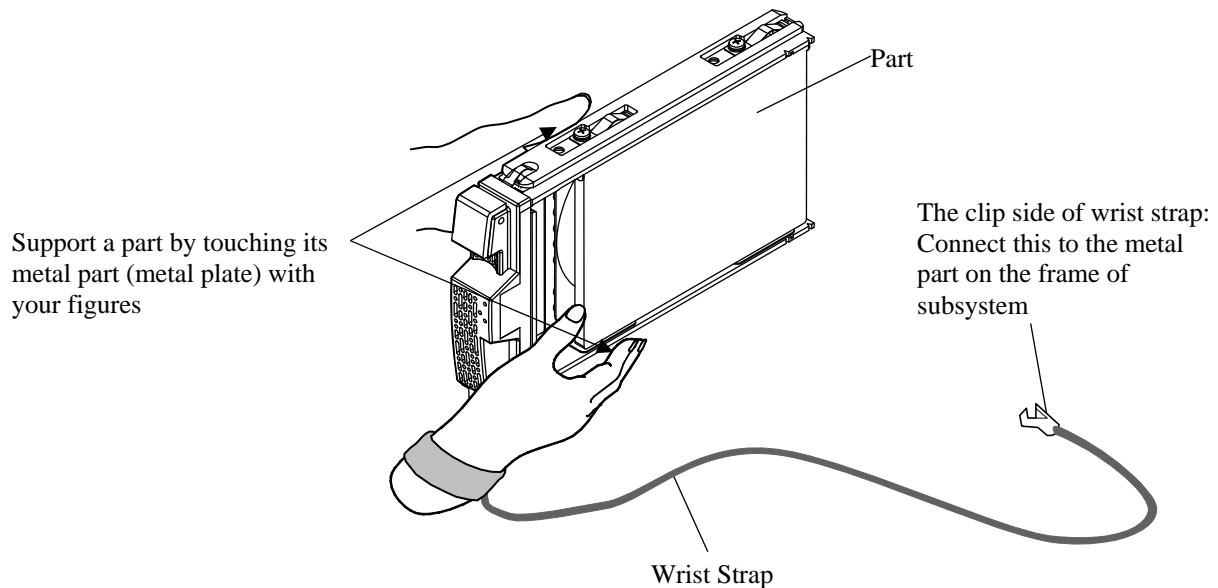


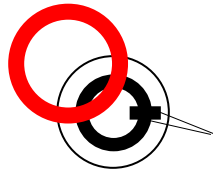
Fig. 1.3.1-1 Attachment of Wrist Strap

1.3.2 Bezel Opening-Closing Procedure

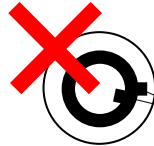
Notice:

- Insert the key all the way in the keyhole and turn the key while pressing it to lock or unlock the Bezel. Turning the key without inserting it all the way in the keyhole can cause a key damage.
- When taking out the key after the Bezel is locked, take out the key exactly the position where the keyhole fits all the way in with the key.

Taking out the key before it fits all the way in the keyhole causes key damage.



Position where
the key fits in
the keyhole.



Position where
the key is out of
the keyhole.

- Taking out the key is not possible when the Bezel is open. Forcibly turning to take out the key causes a key damage. (Refer to the page “2. When taking out the key with Bezel opened” when taking out the key with Bezel opened.)

1. DKU Bezel

DKU Bezel Opening Procedure

- Insert the key into the Bezel keyhole, and turn the key 90 degrees clockwise direction to unlock. (The stopper of the left side of the Bezel is also unlocked, and the Bezel can be opened.)
- Open the bezel by pulling the pocket door pull.

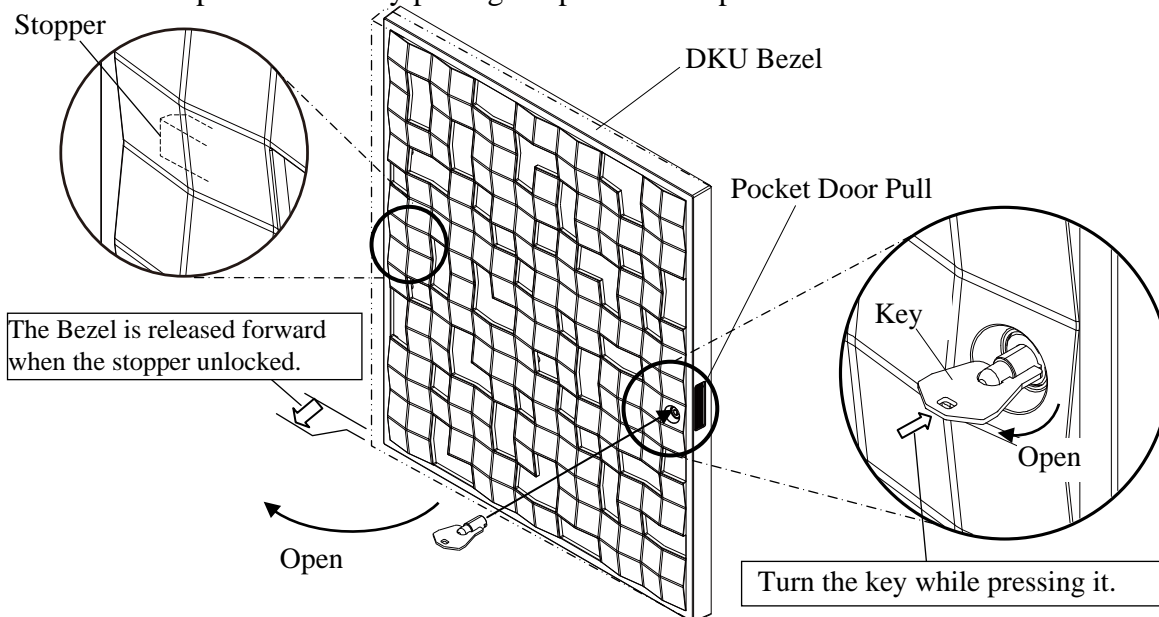


Fig. 1.3.2-1 DKU Bezel Opening Procedure

DKU Bezel Closing Procedure

- Closing the bezel by pushing the pocket door pull.
- Turn the key 90 degrees counterclockwise direction to lock the Bezel, and take out the key from the keyhole.
- Push the left middle side of the Bezel until it clicks.

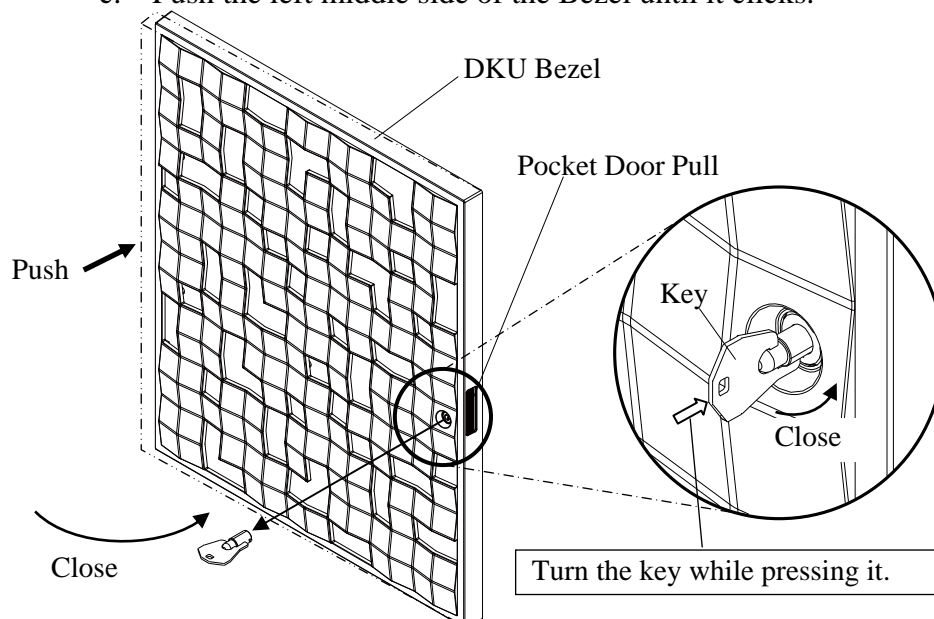


Fig. 1.3.2-2 DKU Bezel Closing Procedure

2. When taking out the key with Bezel opened
 - a. Turn the key 90 degrees counterclockwise direction while pressing the stopper of the rear side of the Bezel.
 - b. Take out the key from the keyhole.

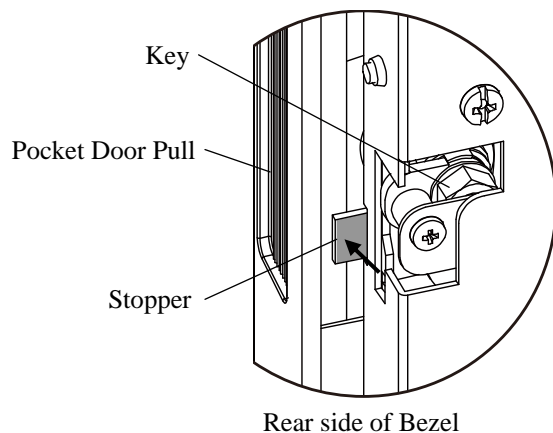


Fig. 1.3.2-3 Specific Procedure of Key Extraction

3. FBX DKU Bezel

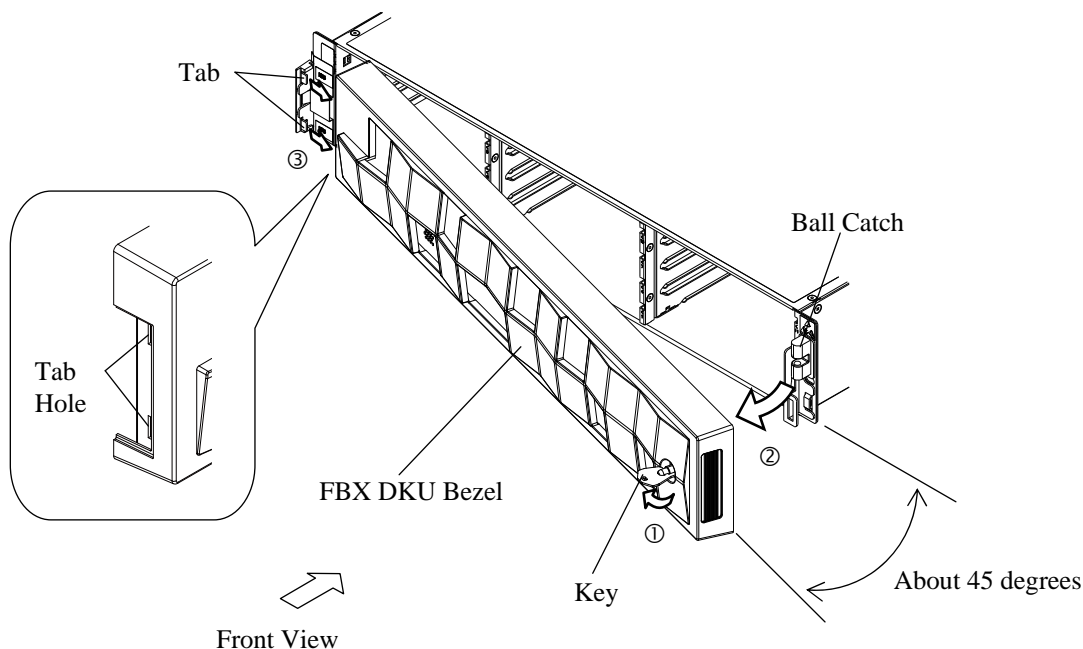
FBX DKU Bezel Removing Procedure

- a. Insert the key into the keyhole on the bezel and release the lock of the bezel (①).
- b. Pull the key toward you while holding the lower right portion of the bezel, and then disengage the right side of the bezel from the ball catch (②).

Note: When disengaging the bezel, work with the opening angle between the bezel and the chassis of up to 45 degrees.

Do not force the bezel open too wide. Otherwise, a damage of bezel may be caused.

- c. Disengage the bezel from the left tabs and then remove it (③).



The state in which the slit of the keyhole is aligned with the mark.

(The key can be inserted or pulled out in this state.)

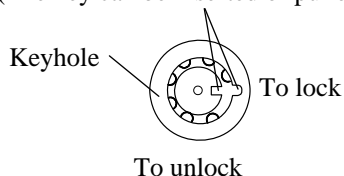
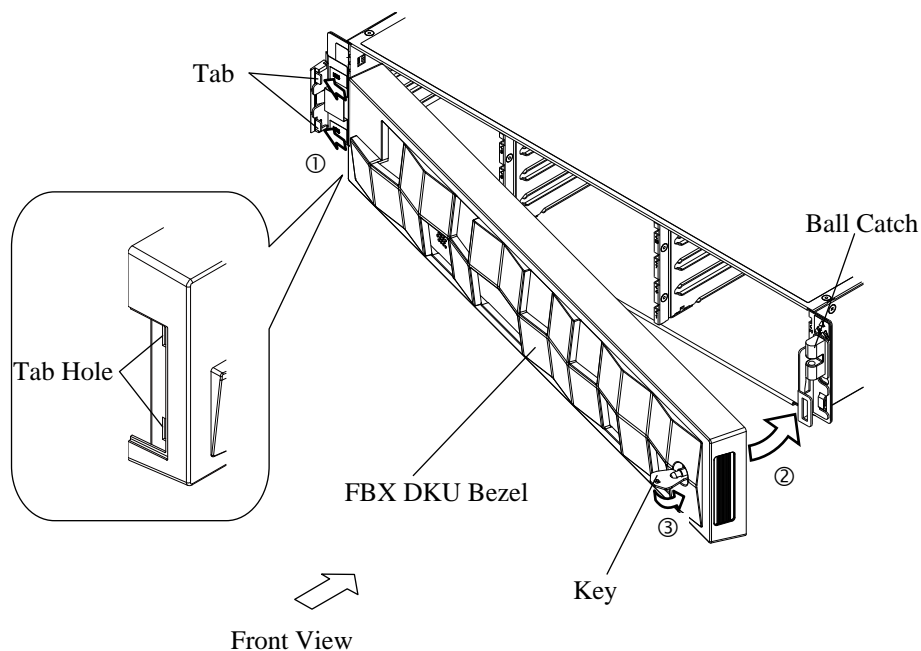


Fig. 1.3.2-4 Removal of Bezel

FBX DKU Bezel Attaching Procedure

- Unlock the bezel with the key.
- Insert the tabs on the left front side of the chassis into the tab holes on the bezel (①).
- Fix the bezel by pressing the right side of the bezel to engage it with the ball catch on the front side of the chassis (②).
- Lock the bezel with the key (③).



The state in which the slit of the keyhole is aligned with the mark.
(The key can be inserted or pulled out in this state.)

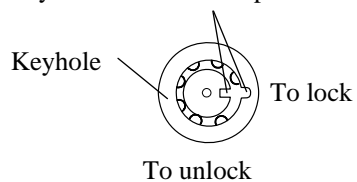


Fig. 1.3.2-5 Attachment of Bezel

1.3.3 Procedure to open and close the FAN door

1.3.3.1 In case of 3.5inch/2.5inch drive

- Put the stopper of the FAN door into the open able and closable state. (Refer to the “3.1.4 Setting of Stopper for FAN Door”.)
- Loosen the two screws and open the FAN door.

1.3.3.2 In case of FMD

- Go to procedure “1.3.5 Procedure to confirm Shut Down LED”.

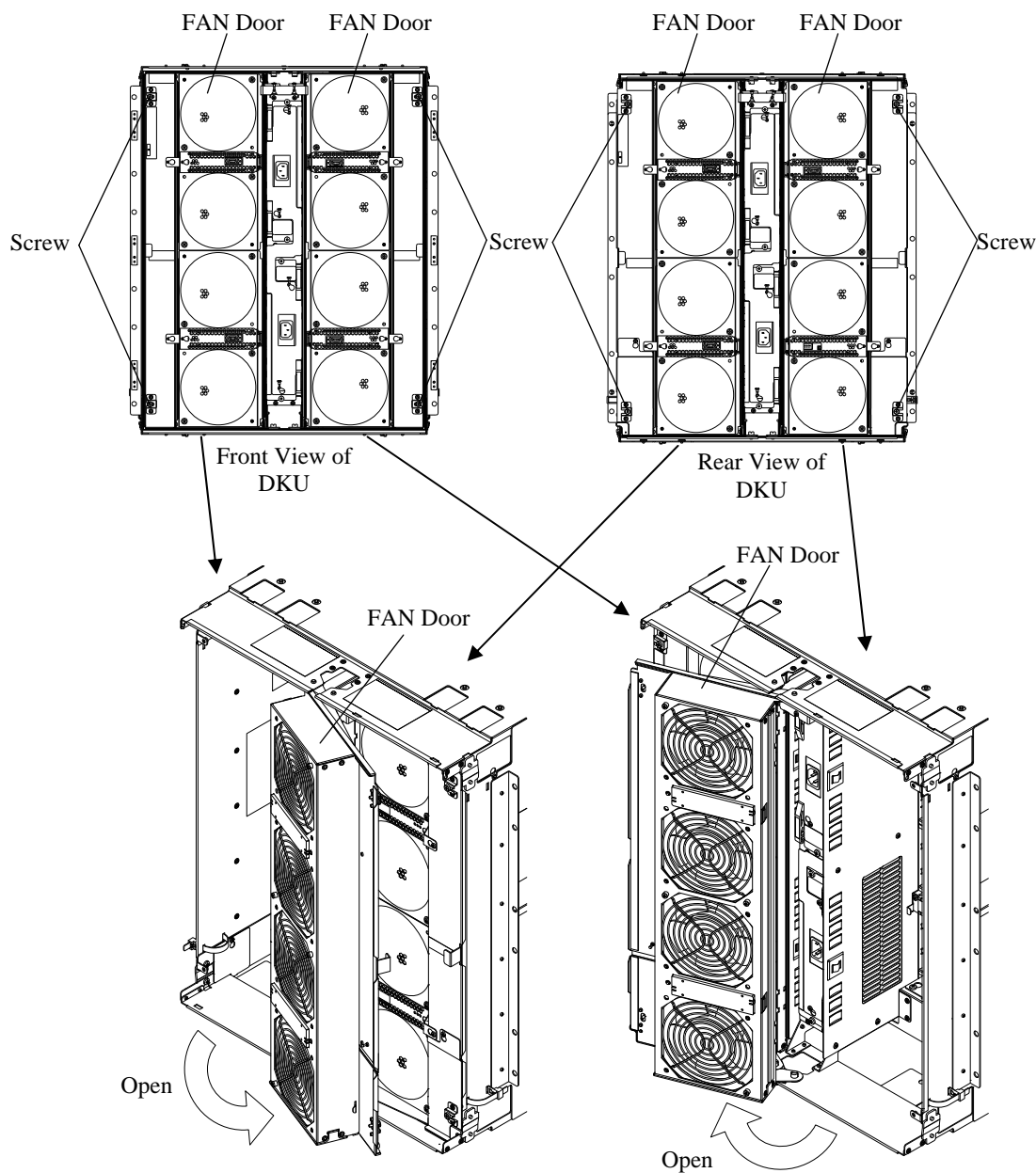


Fig. 1.3.3.2-1 FAN Door Opening

1.3.4 Setting of Stopper for FAN Door

1. The stopper is installed in DKU to restrict the door opening/closing. Moving the stopper back or forth will set the following three conditions.
 - ① State of neutral (All of the FAN doors on the front and rear side of the DKU are unopenable and unclosable.)
 - ② State of the front side FAN doors openable and closable. (Only the FAN doors on the front side of the DKU are openable and closable.)
 - ③ State of the rear side FAN doors openable and closable. (Only the FAN doors on the rear side of the DKU are openable and closable.)

Refer to the Table 1.3.4-1 for the details of ① to ③.

Note: Set the stopper with the screws of the FAN doors tightened. Moving the stopper with the screws of the FAN doors loosened makes the movement heavily.

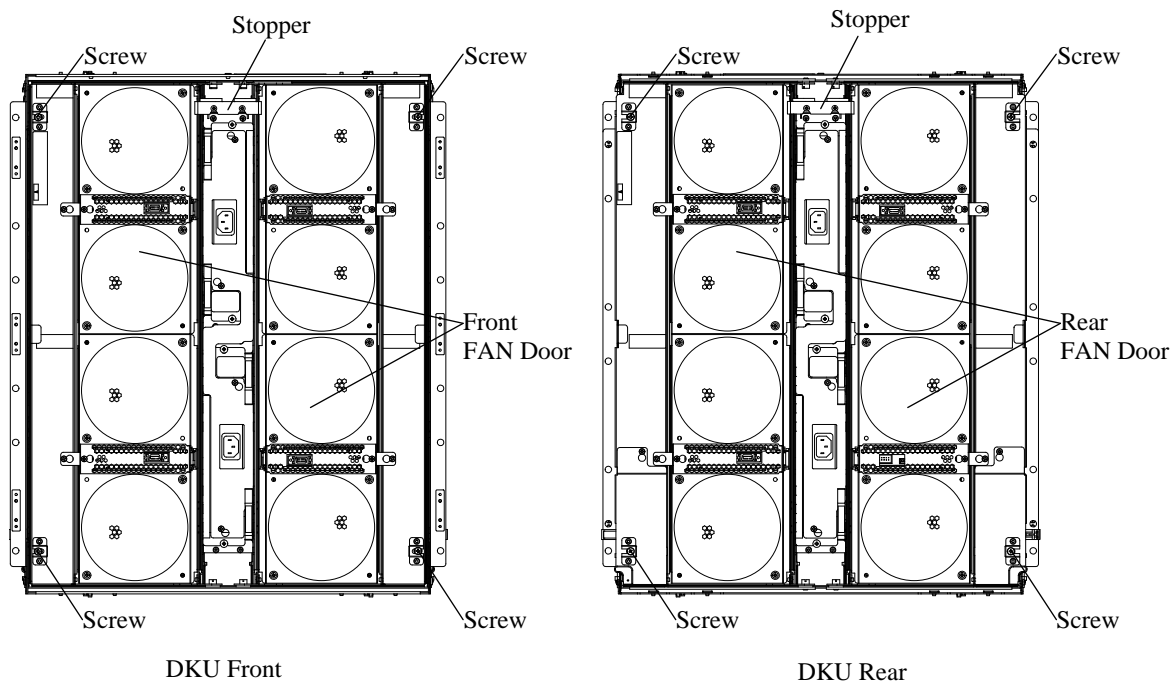
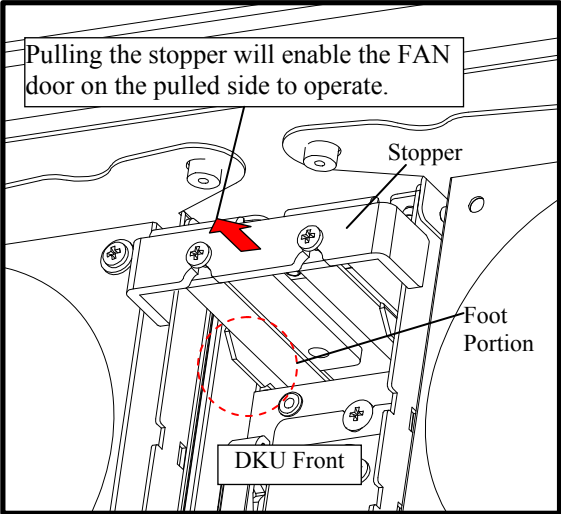
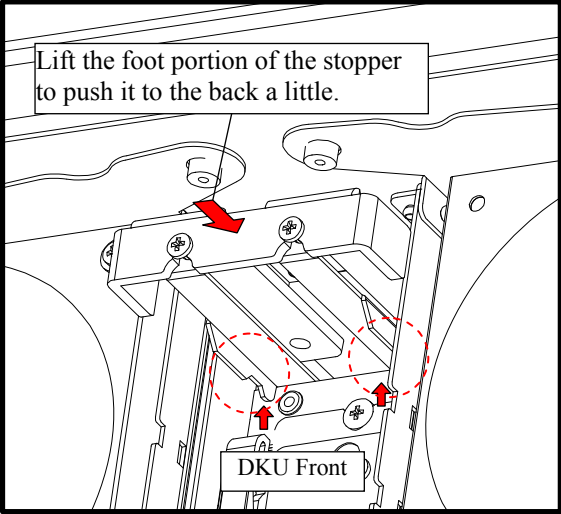
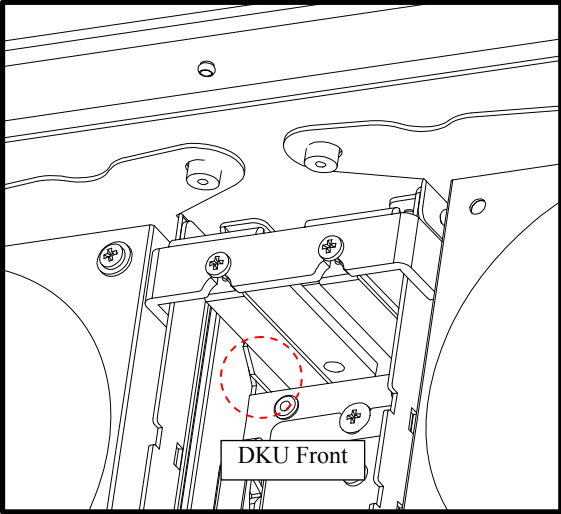


Fig. 1.3.4-1 Position of Stopper for FAN Door

Table 1.3.4-1 Stopper Setting for FAN Door

Setting	Magnified View of Stopper Position	State of FAN Door
①	 <p>Pulling the stopper will enable the FAN door on the pulled side to operate.</p>	<p>State of neutral (Basic state)</p> <p>All of the FAN doors on the front and rear side of the DKU are unopenable and unclosable.</p> <p>→ Pulling the stopper on the front side will enable the front side of the FAN door to open, and pulling the stopper on the rear side will enable the rear side of the FAN door to open.</p>
②	 <p>Lift the foot portion of the stopper to push it to the back a little.</p>	<p>State of the front side FAN doors openable and closable (State of the rear side of the FAN doors unopenable and unclosable)</p> <p>The rear side of the FAN door is unopenable and unclosable, because the foot portion of the stopper is stuck in the front side.</p> <p>To return the stopper in the neutral, lift the foot portion of the stopper on the front side to push it to the back a little.</p>
③		<p>State of the front side FAN doors unopenable and unclosable (State of the rear side of the FAN doors openable and closable)</p> <p>The front side of the FAN door is unopenable and unclosable, because the foot portion of the stopper is stuck in the rear side.</p> <p>To return the stopper in the neutral, lift the foot portion of the stopper on the rear side to push it to the back a little.</p>

1.3.5 Procedure to confirm Shut Down LED

1.3.5.1 Check the Shut Down LED

1.3.5.1.1 In case of 3.5inch/2.5inch drive

- a. Check that the Shut Down LED on the HDDPWR corresponding to drive (HDD/SSD) is turned on. Refer to Fig. 1.3.5.1.1-1 or 1.3.5.1.1-2.

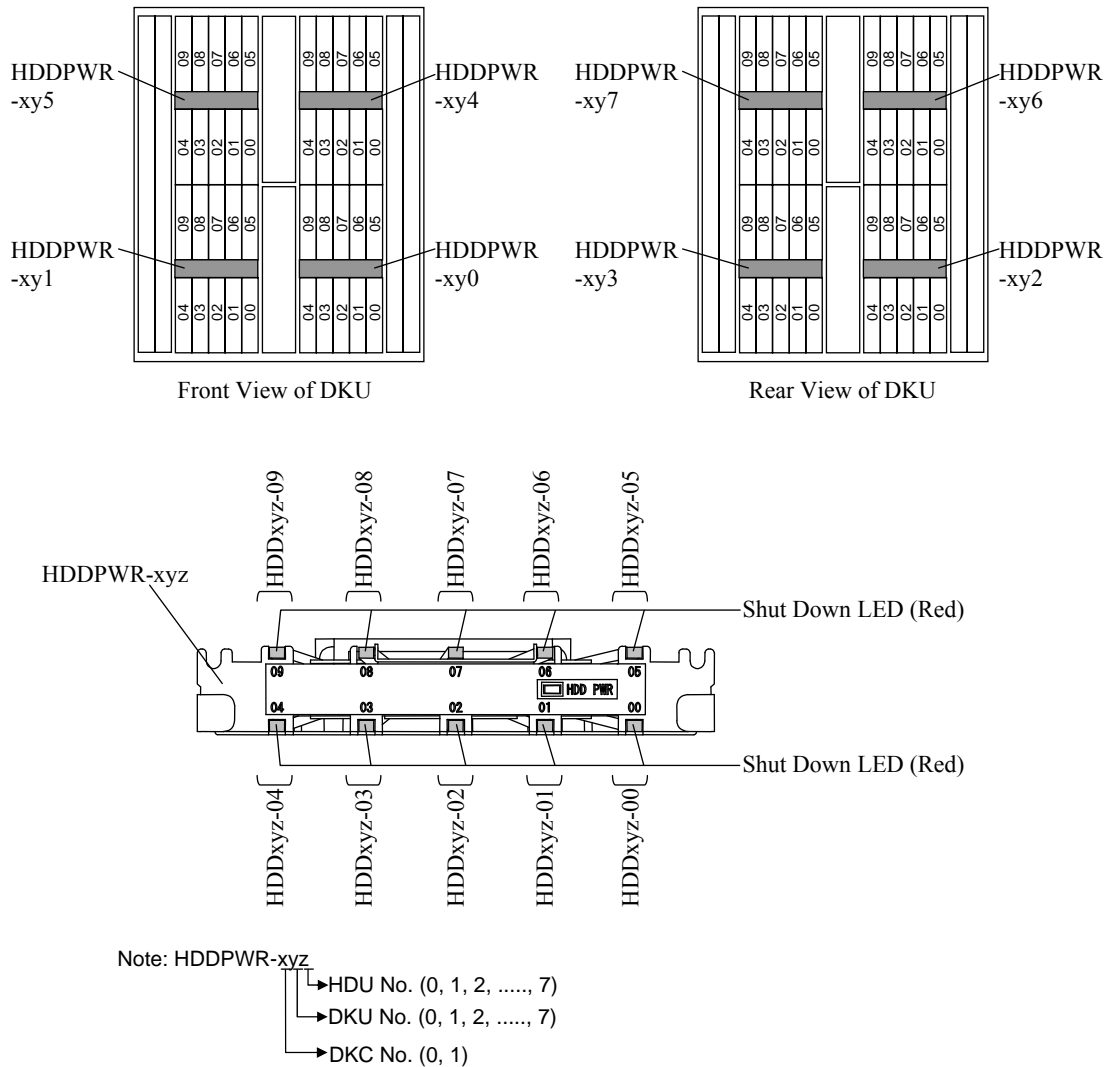


Fig. 1.3.5.1.1-1 Checking of Shut Down LED (In case of 3.5inch Drive)

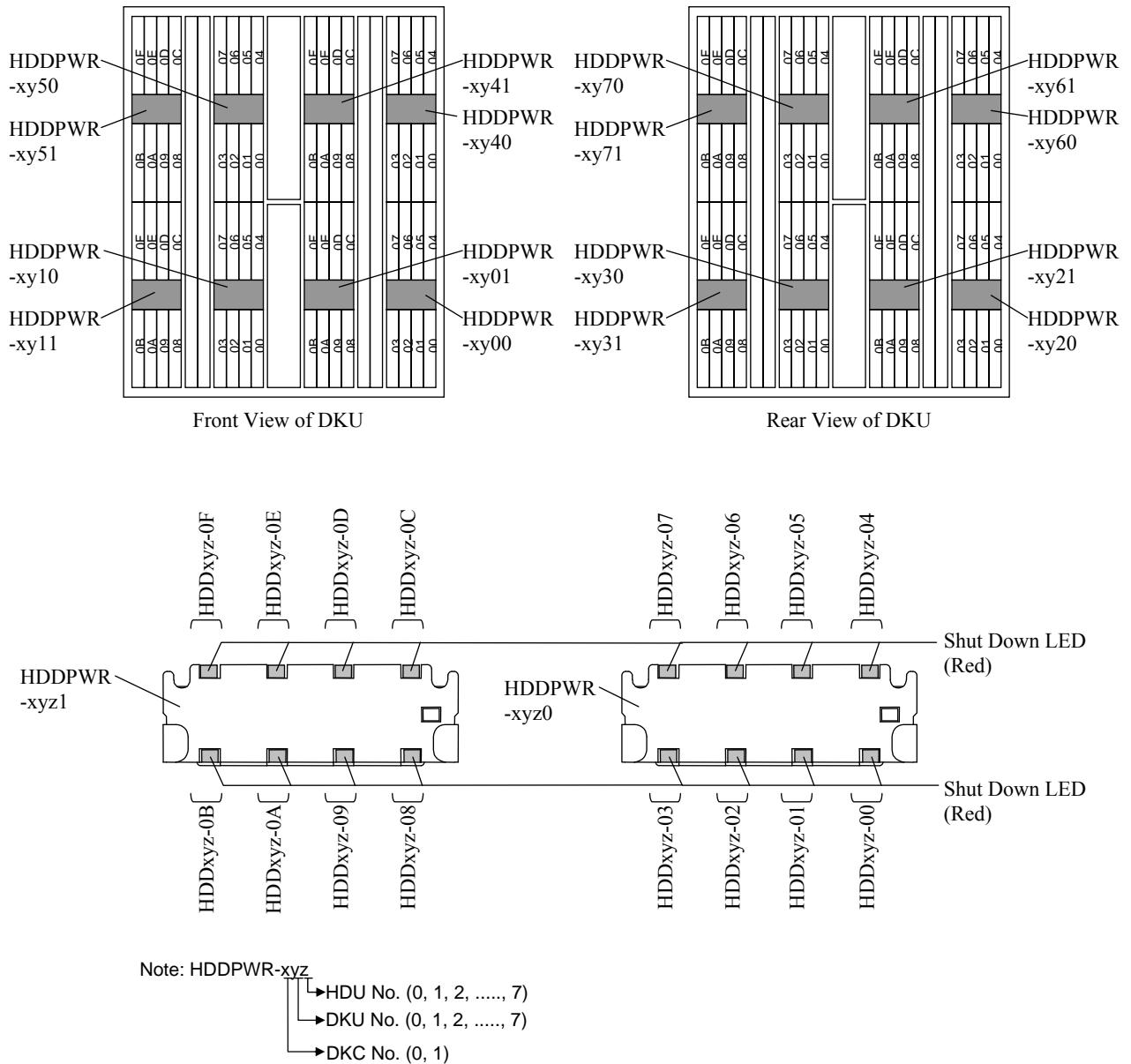
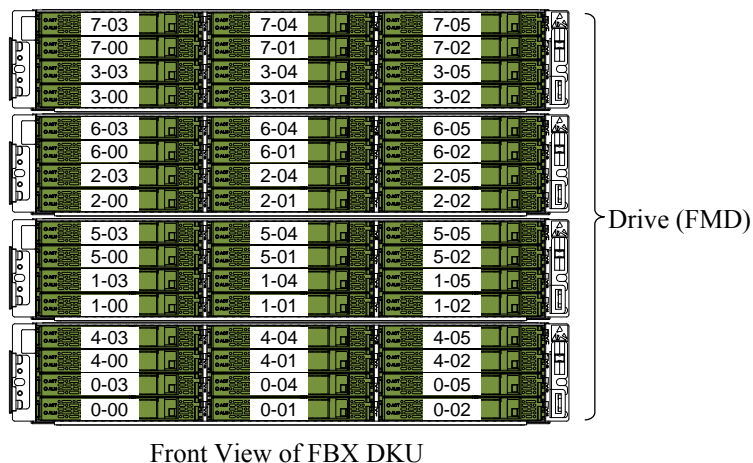


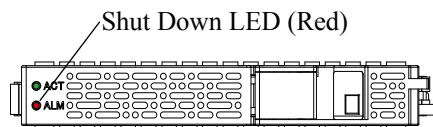
Fig. 1.3.5.1.1-2 Checking of Shut Down LED (In case of 2.5inch Drive)

1.3.5.1.2 In case of FMD

- a. Check that the Shut Down LED on drive is turned on.



Front View of FBX DKU

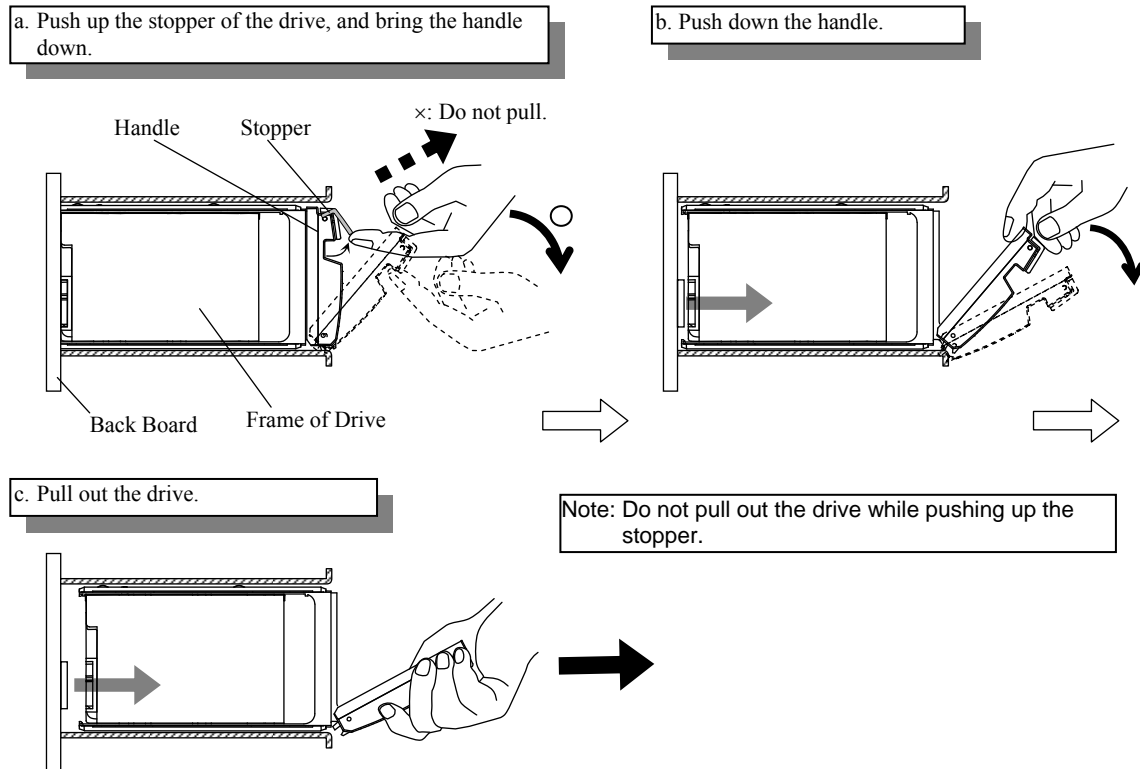
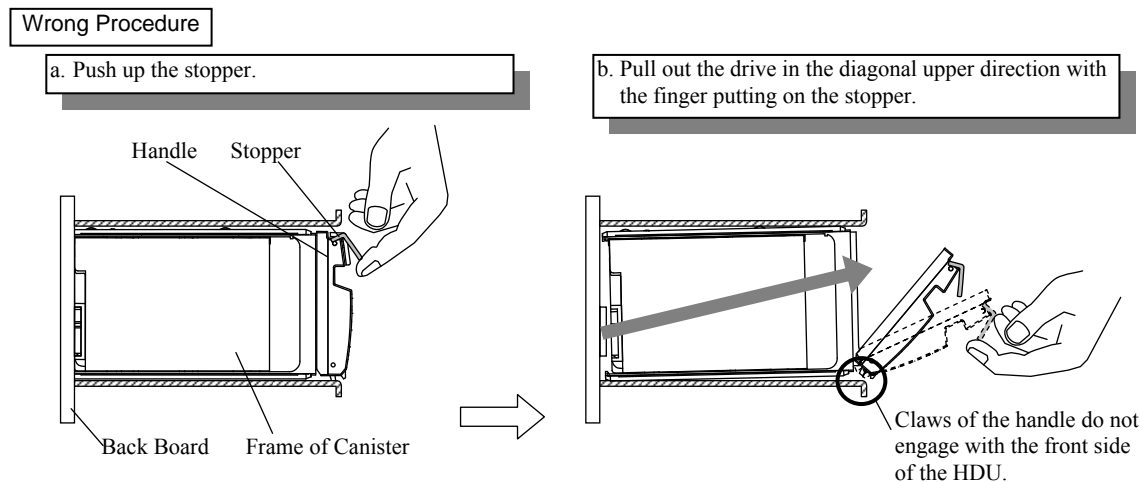


Front View of Drive (FMD)

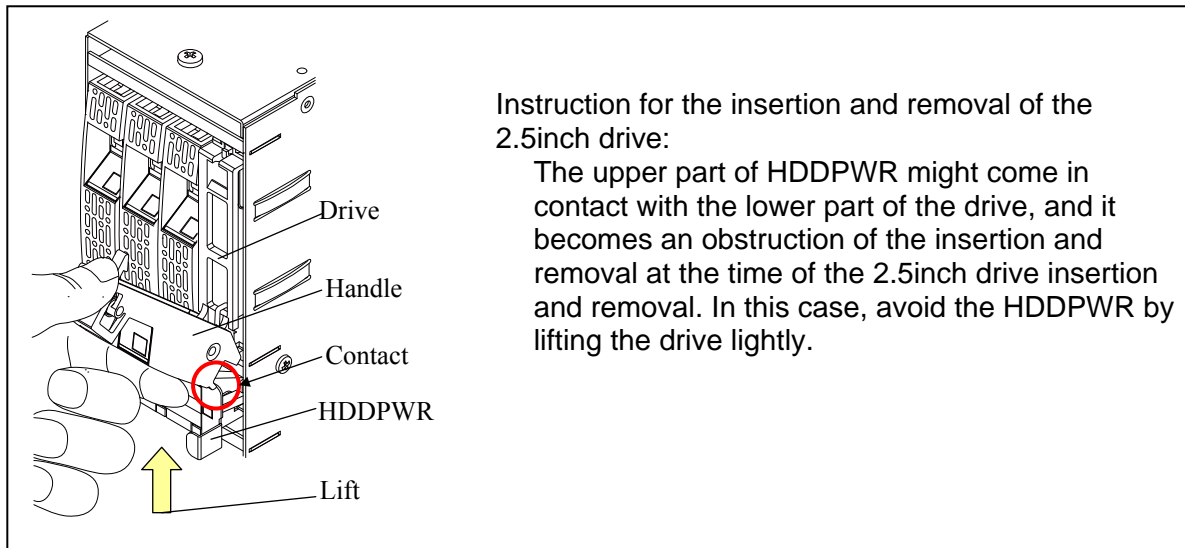
Fig. 1.3.5.1.2-1 Checking of Shut Down LED (In case of FMD)

EASYMNT01-280**1.3.6 Procedure to Replace HDD****1.3.6.1 Remove the drive****1.3.6.1.1 In case of 3.5inch drive**

- Push up the stopper of drive, and bring the handle down. Don't pull the handle during this process.
- Push down the handle.
- Pull out the drive.
- Fig. 1.3.6.1.1-2 illustrates the case of wrong procedure.

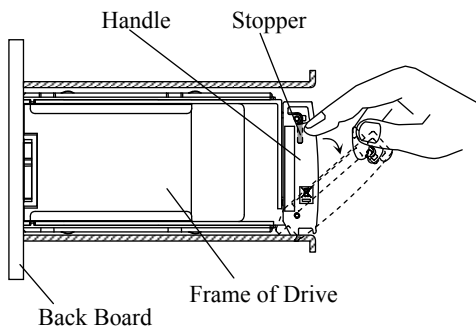
**Fig. 1.3.6.1.1-1 Removal of Drive****Fig. 1.3.6.1.1-2 Removal of Drive (Wrong Procedure)**

1.3.6.1.2 In case of 2.5inch drive

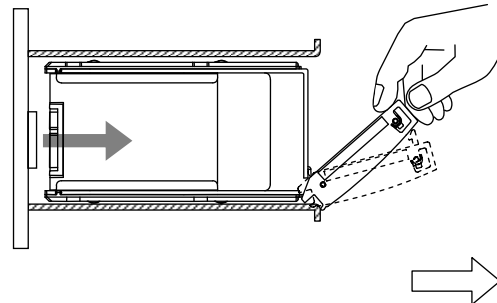


- Push the stopper of drive, and bring the handle down. Don't pull the handle during this process.
- Push down the handle.
- Pull out the drive.
- Fig. 1.3.6.1.2-2 illustrates the case of wrong procedure.

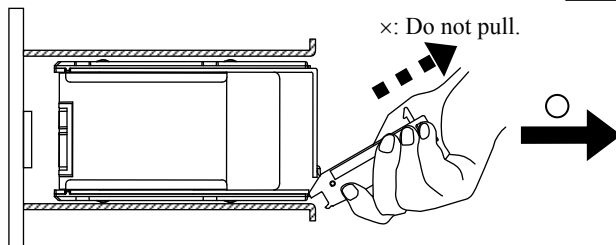
a. Push the stopper of the drive, and bring the handle down.



b. Push down the handle.



c. Pull out the drive.

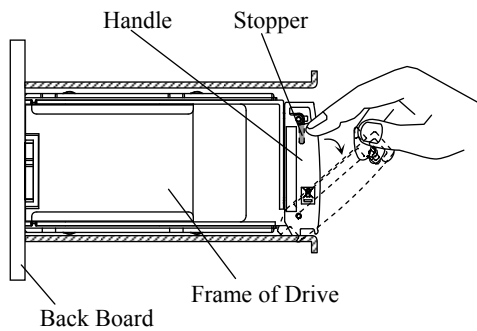


Note: Do not pull out the drive while pushing up the stopper.

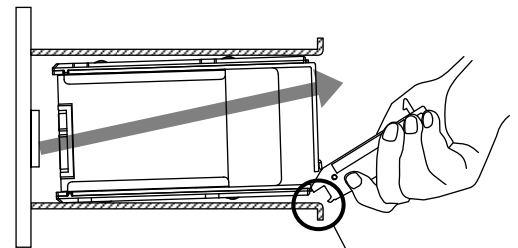
Fig. 1.3.6.1.2-1 Removal of Drive

Wrong Procedure

a. Push the stopper.



b. Pull out the drive in the diagonal upper direction with the finger putting on the stopper.



Claws of the handle do not engage with the front side of the HDU.

Fig. 1.3.6.1.2-2 Removal of Drive (Wrong Procedure)

1.3.6.1.3 In case of FMD

Notice: When the FMD is removed in replacing procedure, the fans of the DKUPS equipped in the rear of the FBX DKU rotate at the highest speed. When the spare FMD is installed, the fans of the DKUPS rotate at the speed suitable for environmental temperature.

- a. Pull the stopper of the drive handle toward you to have the lock off.
- b. Tilt the handle toward you, and then remove the drive by pulling it out taking care not to apply a shock to it.

Note: When handling the drive, hold the rail side because the shield spring is subject to breakage.

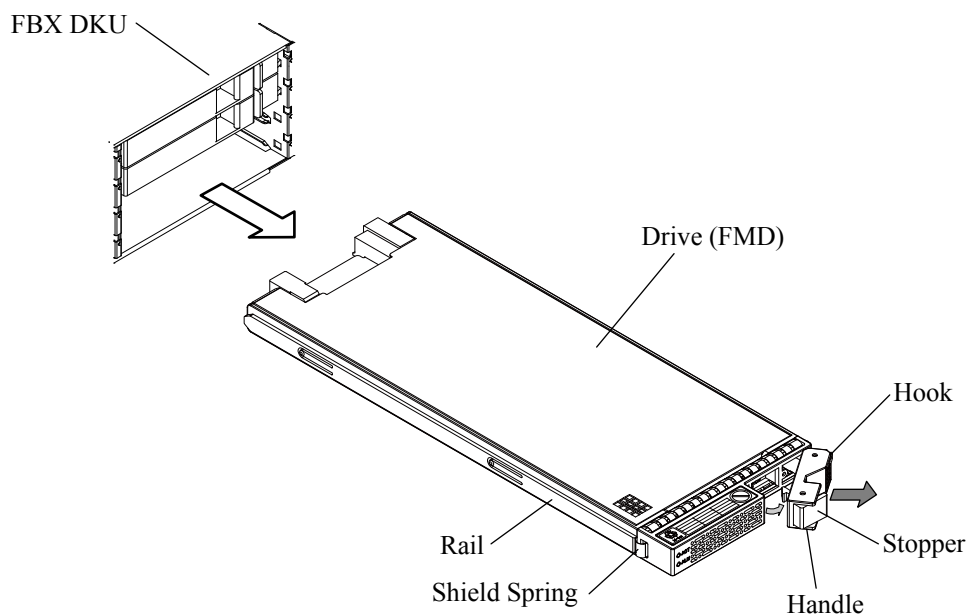
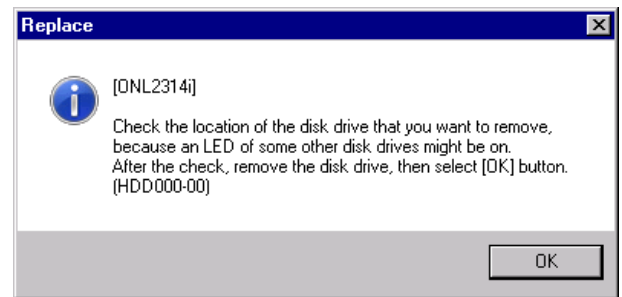


Fig. 1.3.6.1.3-1 Removal of Drive (In case of FMD)

1.3.6.2 Check and handling of the drive

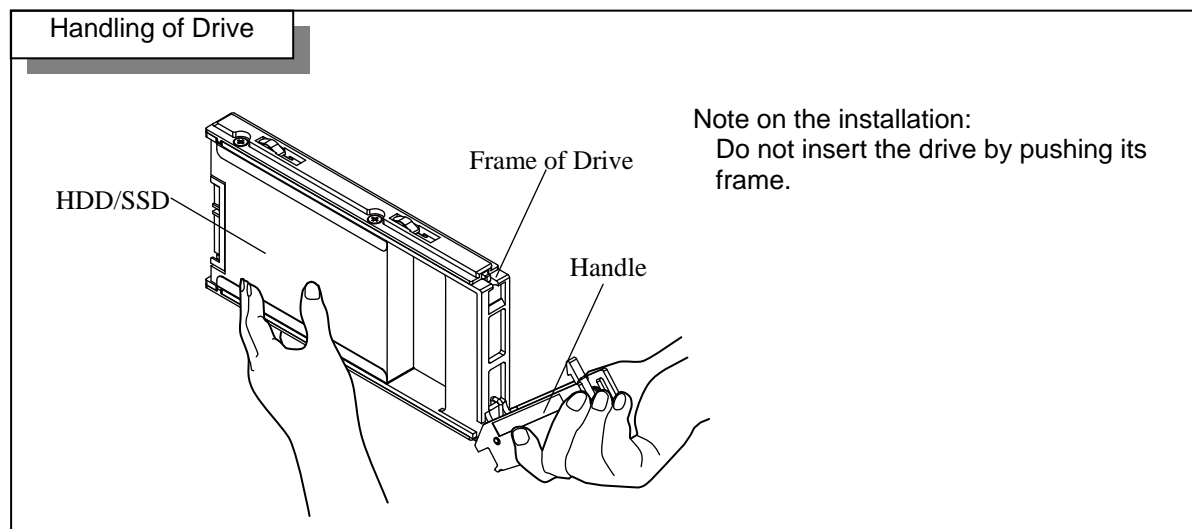
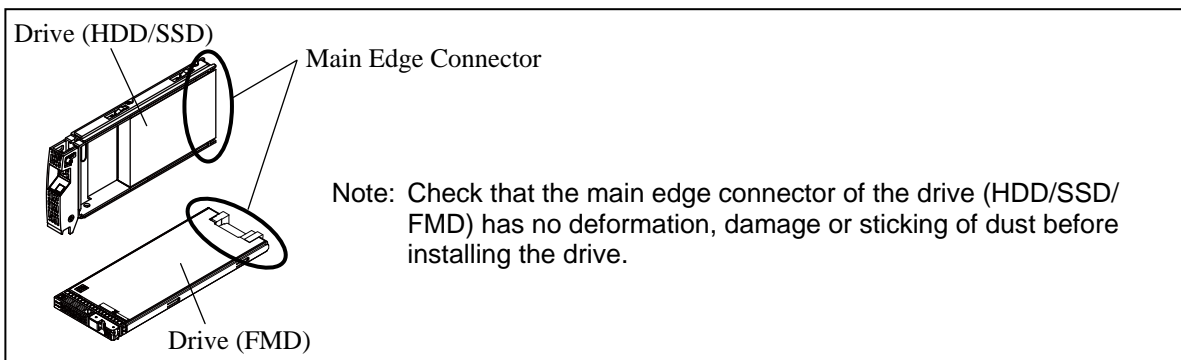
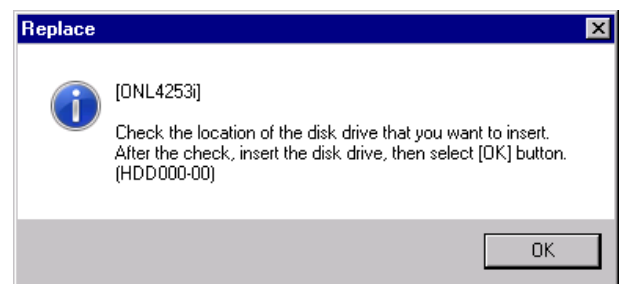
(1) <Confirm Removal>

Select (CL) [OK] in response to “Check the location of the disk drive that you want to remove, because an LED of some other disk drives might be on. After the check, remove the disk drive, then select [OK] button. (HDDnnn-nn)” after the unit is removed. (Step 1.3.6.1)

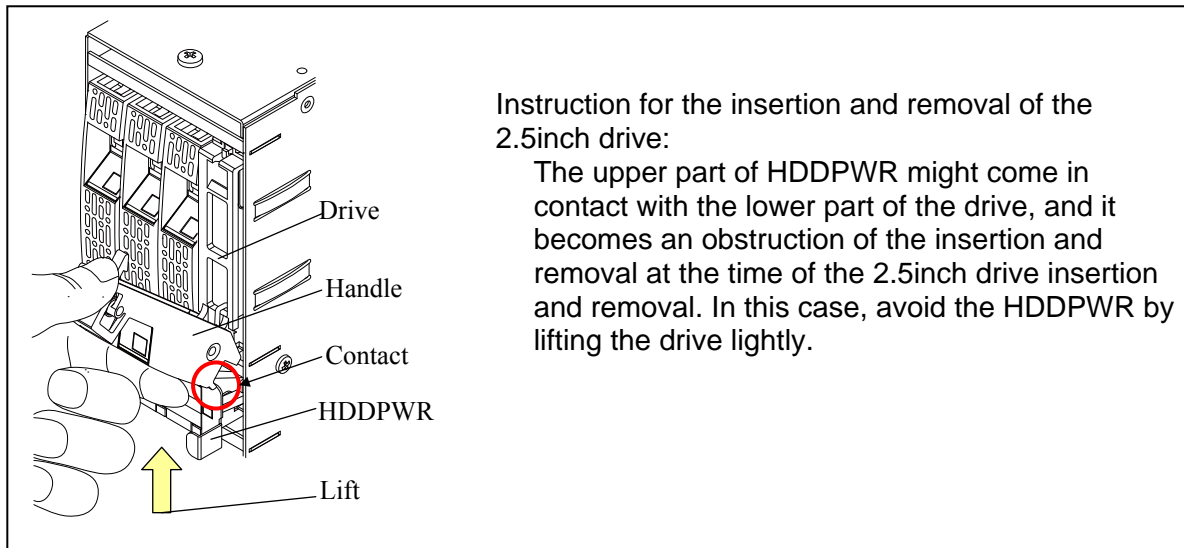


(2) <Confirm Insertion>

“Check the location of the disk drive that you want to insert. After the check, insert the disk drive, then select [OK] button. (HDDnnn-nn)” is displayed.



1.3.6.3 Install the drive



Caution – Back Board, or drive connector or drive handle may be damaged when the drive is forcibly inserted.

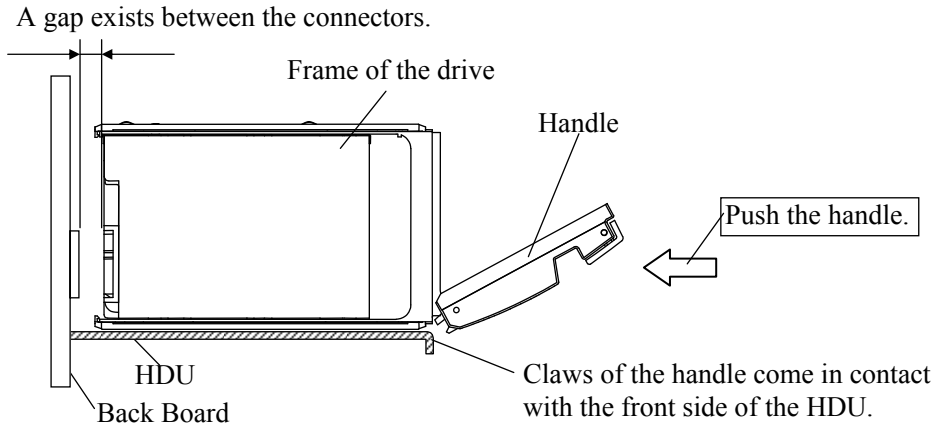
If the drive cannot be easily inserted until the claws on the handle reach the DKU, or if the handle binds or stops before it can be locked, then remove the drive and perform inspection:

- Check the drive slot in DKU to be free and clear of obstructions.
 - Check connector on back board for visible defects.
 - Inspect connector on drive for visible defects.
 - Inspect drive top and bottom guide for defects. Note special alignment tab on bottom guide on some drive. A damaged tab can bind on the lower slot guides in DKU.
 - During installation make sure the drive is inserted in alignment with slot guides.
 - Check upper rear spring on SSD has been removed. (This applies only on SSD)
- Reinsert drive after inspections have passed.

1.3.6.3.1 In case of 3.5inch/2.5inch drive

- a. Insert the drive into the HDU holding its handle.
(Insert the canister until the claws that are located at the bottom of the handle come in contact with the front side of the HDU.)
- b. Turn the handle at a stroke by pushing its top with your thumb.
(Turn the handle until it latches with the stopper. Do not stop the handle on its way of turning.)

a. Insert the HDD/SSD canister into the HDU holding its handle.



b. Turn the handle at a stroke by pushing its top with your thumb.
(Do not stop the handle on its way of turning.)

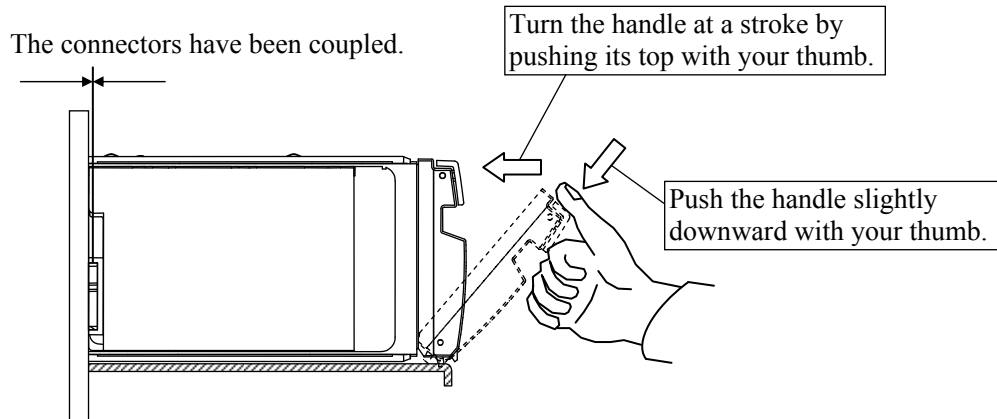


Fig. 1.3.6.3.1-1 Method of Installing Drive

- c. Close the FAN door and tighten the screws. (Refer to Fig. 1.3.3.2-1.)
- d. Put the FAN door stopper into the neutral state.

1.3.6.3.2 In case of FMD

Note: When handling the drive, hold the rail side because the shield spring is subject to breakage.

- Open the handle fully and fit the drive in the guide rail and slide it in the direction shown by the arrow not to give a shock.
- Push the drive in until it reaches the position where a hook of the handle can be entered into the square hole on a frame.
- Pull the stopper lightly and close the handle, and then press the stopper to have the lock on. If the handle is closed in the state where the hook of the handle cannot enter into the square hole, the drive cannot be installed correctly because it runs into the frame of the FBX DKU.

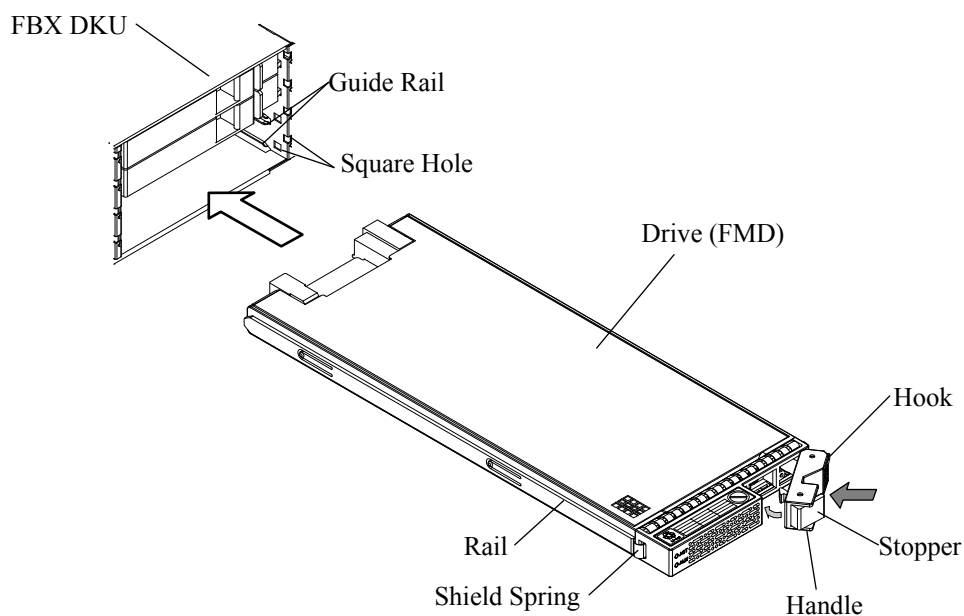


Fig. 1.3.6.3.2-1 Installation of Drive (In case of FMD)

2. Reset Microprocessor

2.1 How to operate the SVP (PC)

2.1.1 How to use Windows

(1) <Notation>

In this manual, “select” has the following meaning, and “(CL)”, “(DC)”, or “(DR)” is added to the word for each meaning.

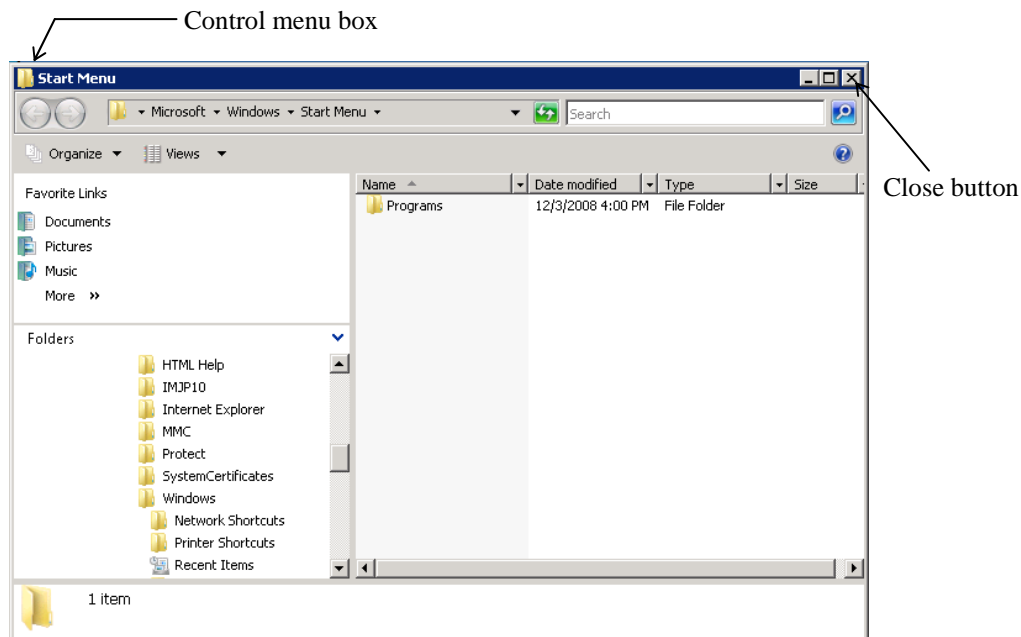
- (CL) Click : Quickly press and release the left side button of mouse.
(DC) Double-click : Click the left side button of mouse twice in rapid succession.
(DR) Drag : To hold down the left side button of mouse while you trace the mouse to move the pointer to a desired position. Then release the button.

Example: Select (DC) the [Guidance] icon in the ‘RAID Maintenance Viewer’ window.
Move the pointer to [Guidance] with the mouse. Then click the left side button of mouse twice in rapid succession.

(2) <Close>

“Close” means to close the application window.

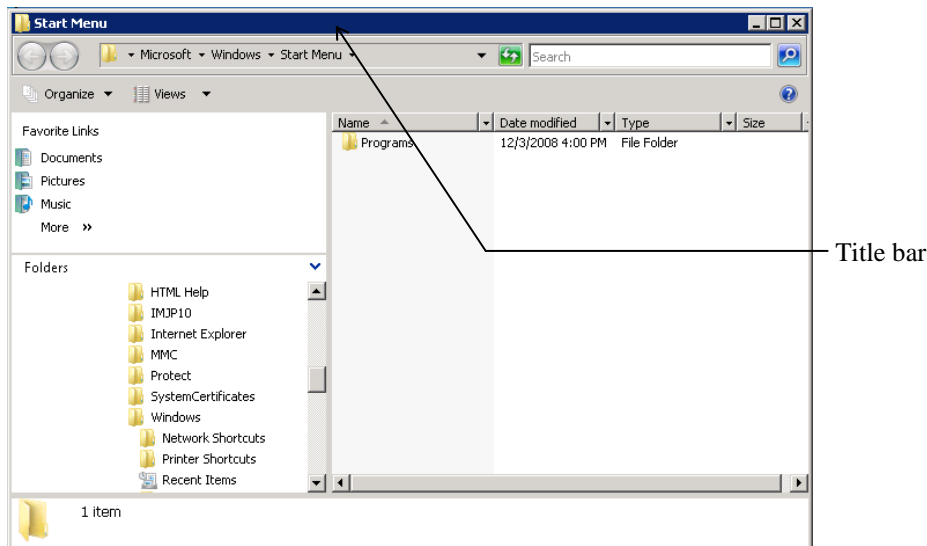
(Double-click the control menu box of the window or click the close button for window.)



(3) <Moving the Window>

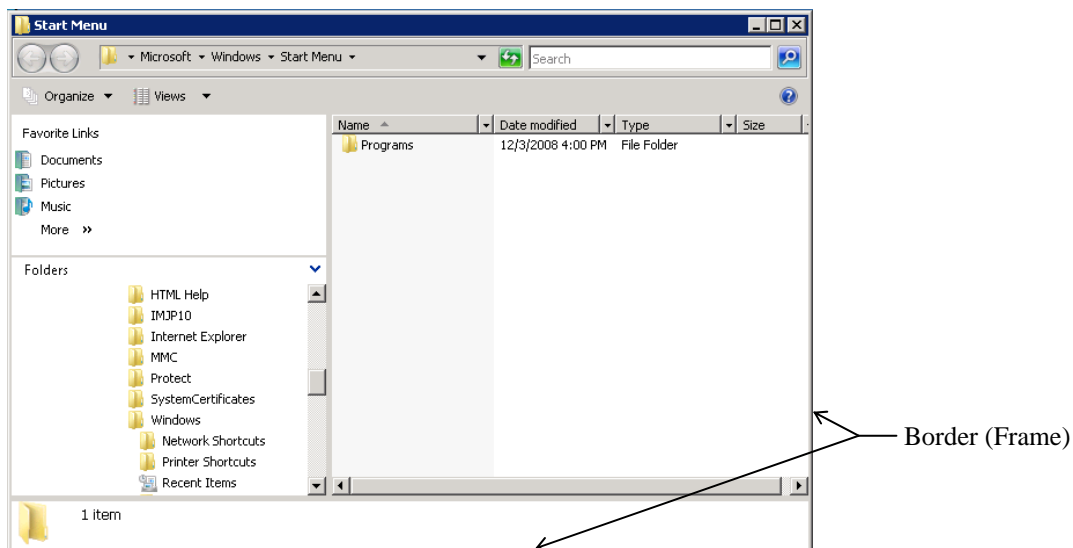
Move the pointer to the title bar with the trackball.

While pressing the button, move the window with the trackball or touchpad (DR) to a desired position and release the button.



(4) <Changing the window size>

Move the pointer to the window border (frame) (the pointer changes to the double-headed arrow). While pressing the button, move the border (the border changes to the broken line) until the window becomes a desired size, and release the button.



- (5) <Switching the screen (when two or more screens are opened)>

While pressing the [ALT] key, press [TAB] key (or [ESC] key) until your desired window title is displayed, and release the [ALT] key.

2.1.2 Connecting the PC to the SVP

In order to connect to SVP (PC), execute remote desktop connection and perform the following procedures from a console PC.

2.1.2.1 Connection to the SVP

- (1) <Performing remote desktop connection>
Select (CL) [Run...] from the [Start] menu.
Enter “mstsc.exe” in the “Open” box, and
select (CL) the [OK] button.



- (2) <Performing the connection>
Enter IP address or host name of the SVP
(PC), and select (CL) the [Connect] button.



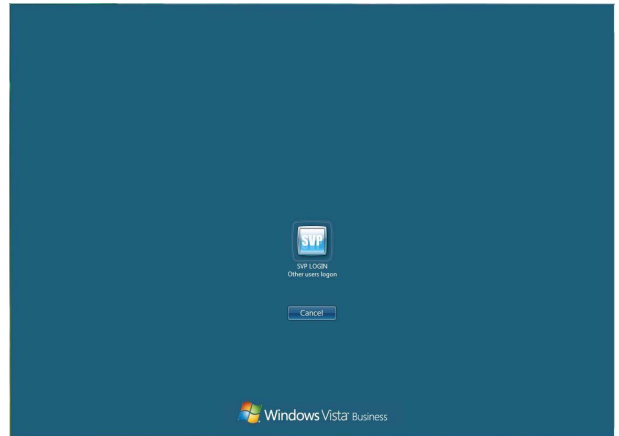
Note: Please check that automatic connection of a local disk drive is set up in the case of connection. Confirmation procedure is as follows.

- (a) Select (CL) the [Options] button, and select (CL) the “Local Resources” tab in the ‘Remote Desktop Connection’ window.
- (b) Confirm that the “Disk drives” is checked.

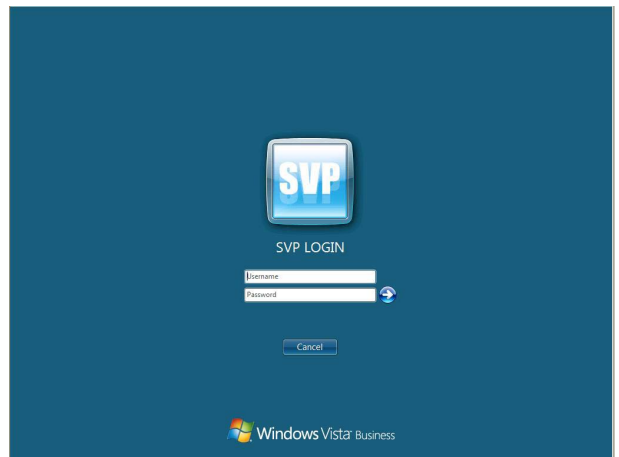


(3) <Performing logon>

Select (CL) SVP icon displayed in the middle of the window, and a window appears to enter user name and password.



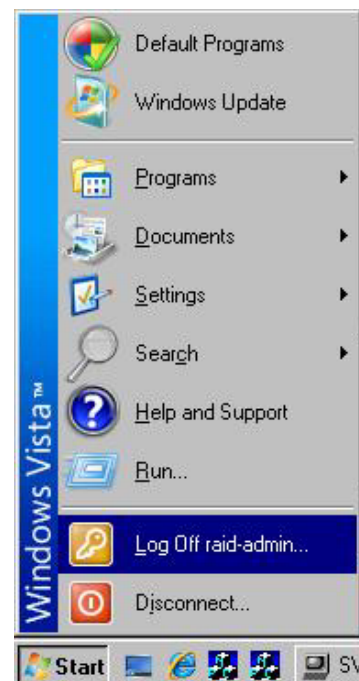
Enter user name and password and click the [→] button to logon to the SVP (PC).



2.1.3 Disconnecting the SVP

Disconnect the Console PC from the SVP.

- (1) <Log off SVP>
Select (CL) [Log Off] from the [Start] menu.



2.2 Reset Microprocessor

2.2.1 Checking of MP location

This section describes that the location of blocked MP.

1. Check the service information messages (SIMs) at the Alerts window (To open the Alerts window: In the Remote Web Console main window, select (CL) Alert).
2. Search SIM:3073XY (Processor blocking).
3. Specify the location from the following chart.

<Usage Restrictions>

- Not to be used to recover hardware failures.
- Not to be used to recover a MP of MPB which all MP in MPB blocked.

Table 2.2.1-1 SIM Reference code of MP and correspondence table of location

X	Y	DKC	MPB	Location
0	0	0	MPB-1MA	MP00-1MA
	1			MP01-1MA
	2			MP02-1MA
	3			MP03-1MA
1	0		MPB-1MB	MP04-1MB
	1			MP05-1MB
	2			MP06-1MB
	3			MP07-1MB
2	0		MPB-2MC	MP08-2MC
	1			MP09-2MC
	2			MP0A-2MC
	3			MP0B-2MC
3	0		MPB-2MD	MP0C-2MD
	1			MP0D-2MD
	2			MP0E-2MD
	3			MP0F-2MD
4	0	1	MPB-1ME	MP10-1ME
	1			MP11-1ME
	2			MP12-1ME
	3			MP13-1ME
5	0		MPB-1MF	MP14-1MF
	1			MP15-1MF
	2			MP16-1MF
	3			MP17-1MF
6	0		MPB-2MG	MP18-2MG
	1			MP19-2MG
	2			MP1A-2MG
	3			MP1B-2MG
7	0		MPB-2MH	MP1C-2MH
	1			MP1D-2MH
	2			MP1E-2MH
	3			MP1F-2MH

Eg.) 307311 (DKC-0, MPB-1MB, MP05-1MB)

307372 (DKC-1, MPB-2MH, MP1E-2MH)

EASYMNT02-80**2.2.2 Procedure for MP resetting****(1) <Connection to the SVP>**

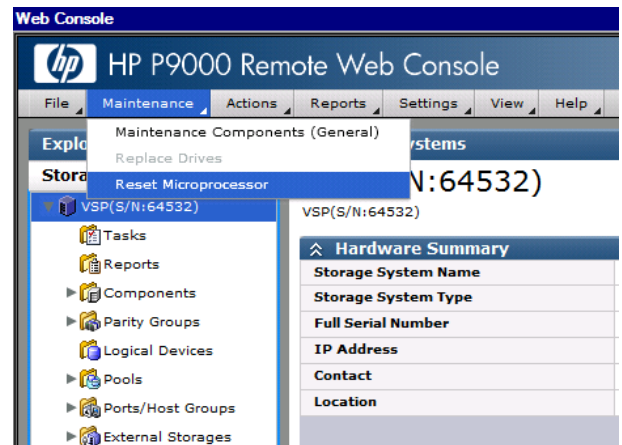
Connect to SVP using remote desktop connection from a console PC.

For details, see “2.1.2 Connecting the PC to the SVP”.

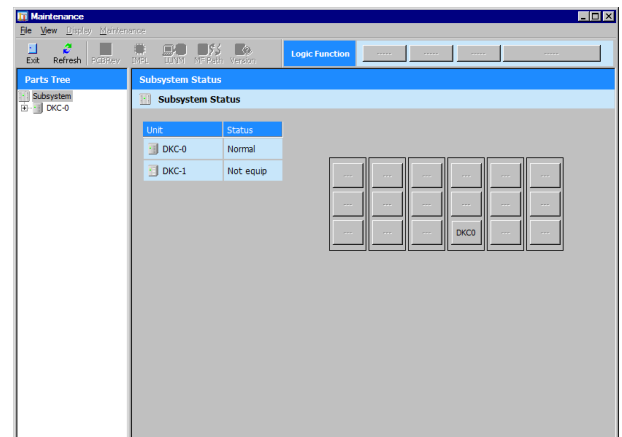
Enter user name and password of user maintenance personnel account, and select (CL) the [→] button.

**(2) <Starting a window>**

Select (CL) [Maintenance]-[Reset Microprocessor] from the menu in the ‘Web Console’ window.

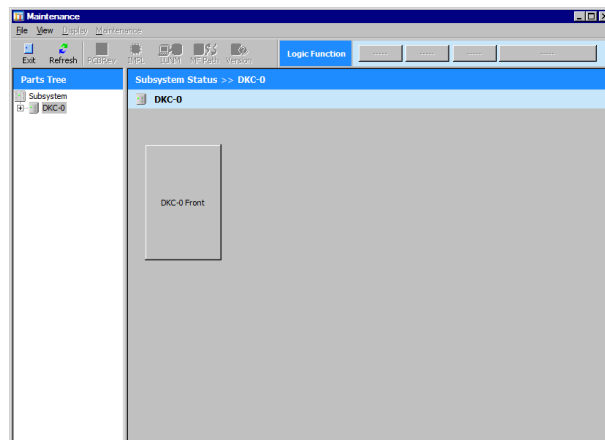
**(3) <Select DKC-n>**

Select (CL) [DKC-n] in the ‘Maintenance’ window.



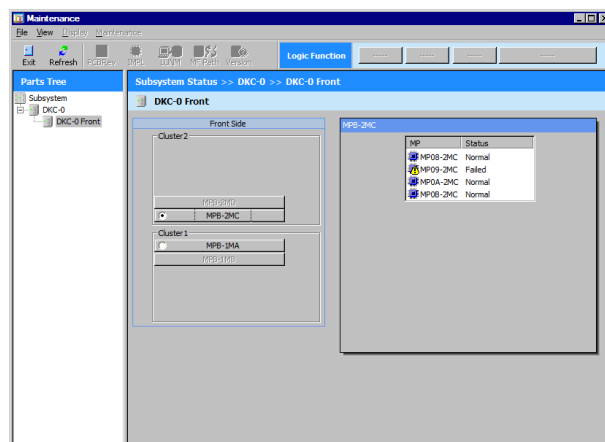
(4) <Select DKC-n Front>

Select (CL) [DKC-n Front] in the [DKC-n].



(5) <Select MP PCB>

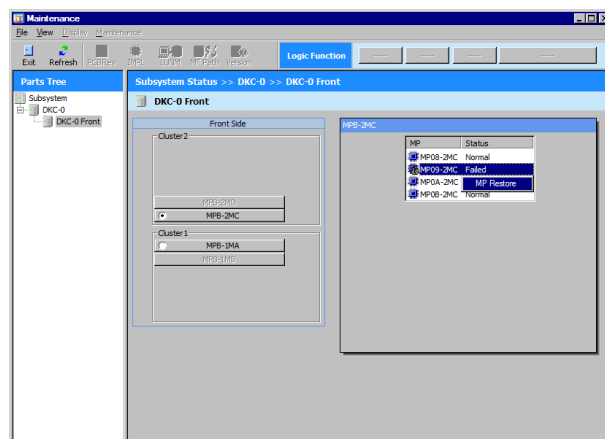
Select (CL) [MPB-nXX] in the [DKC-n-Front].



Eg. MPB 2MC

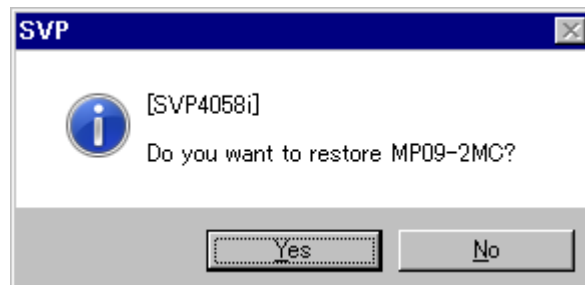
(6) <Specify reset of MP>

Make sure that the Status is "Failed".
Select (CL) [MP Restore] in the context menu.



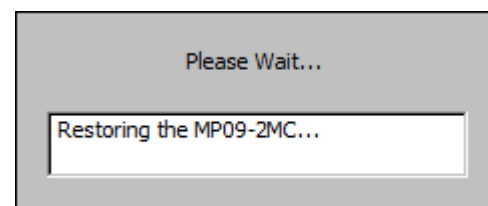
Eg. MPB 2MC

- (7) <Check the beginning of MP Restore>
Select (CL) [Yes] in response to “Do you want to restore MPnn-nXX?”.



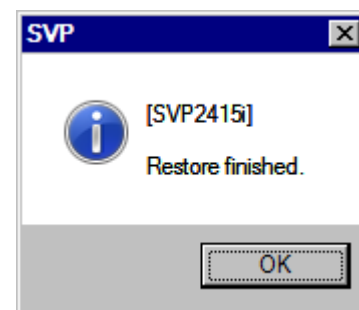
Eg. MP09 2MC

- (8) <Restoring>
Restoring MP.



Eg. MP09 2MC

- (9) <Check end of restore>
Select (CL) [OK] in response to “Restore finished.”.



- (10) <Log off the SVP>
Select (CL) the [Exit] button on the 'Maintenance' window to close the window.

Log off the SVP.
For logoff, see “2.1.3 Disconnecting the SVP”.

