

WEB CONSOLE SECTION

Contents

WEB01-10	1. Before using Web Console
WEB01-30	1.1 Setting IP Address and Network
WEB01-100	1.2 Check of Configuring Web Console over a Firewall
WEB02-10	2. Web Console
WEB02-10	2.1 Specifications of Web Server Status
WEB02-50	2.2 Procedure for Activation Using SVP
WEB02-80	2.3 Specifications Common to Functions of Web Console
WEB02-90	2.4 Before Using Web Console (You are requested to read this without fail)
WEB02-90	2.4.1 How to use maintenance PC's directory
WEB02-110	2.4.2 Auto Account Lock
WEB02-120	2.5 Actions to Be Taken According to Result of Trouble shooting
WEB03-10	3. Difference from the P.P. Manual
WEB03-10	3.1 Local Replication
WEB03-10	3.1.1 Initialize Local Replica Pairs
WEB03-20	3.1.2 Split Pairs window
WEB03-30	3.1.3 Resync Pairs window
WEB03-40	3.2 Data Retention Utility
WEB03-50	3.3 Universal Volume Manager
WEB03-50	3.3.1 Mapping its own volumes
WEB03-60	3.3.2 Previous arrangement for mapping its own volumes
WEB03-60	3.3.3 Note for mapping its own volumes
WEB03-70	3.4 Remote Replication
WEB03-70	3.4.1 Remote Replica Function Switch
WEB03-80	3.4.1.1 Edit Remote Replica Function Switch
WEB03-90	3.4.1.2 Remote Copy Function Switch
WEB03-100	3.4.2 Complete SIMs
WEB03-100	3.4.2.1 Complete SIMs (TC)
WEB03-110	3.4.2.2 Complete SIMs (UR)
WEB03-111	3.4.2.3 Complete SIMs (GAD)
WEB03-120	3.4.3 Assign Remote Command Devices window
WEB03-130	3.5 Release Mainframe Command Devices
WEB03-140	3.6 Dynamic Provisioning/Dynamic Tiering/Dynamic Provisioning for Mainframe/Dynamic Tiering for Mainframe
WEB03-160	3.7 Change SCP Time
WEB04-10	4. IPv6 Setting

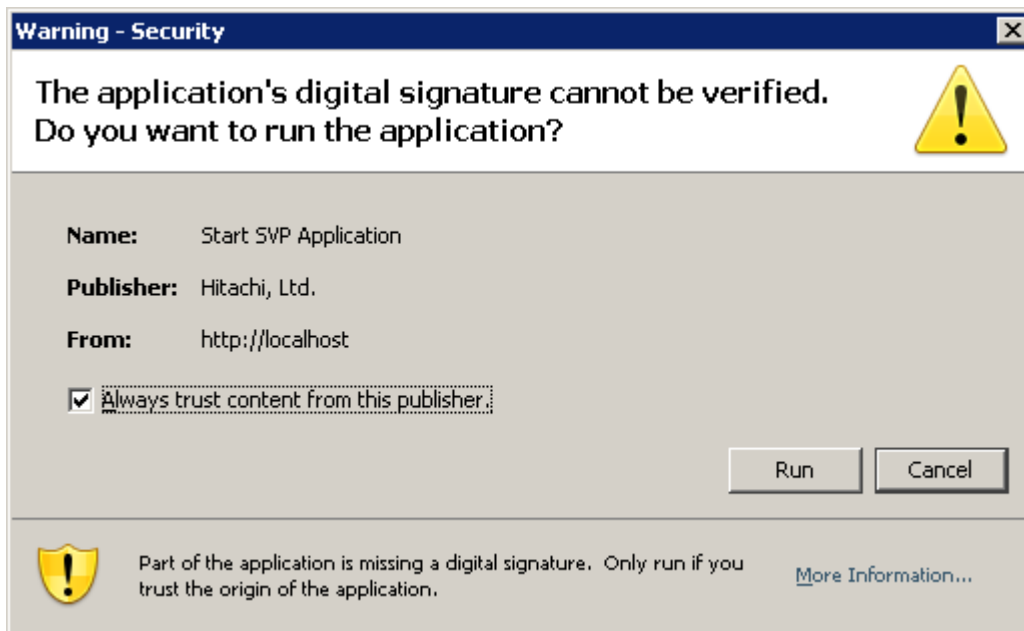
WEB05-10	5. Procedure of server software uninstallation/installation
WEB05-10	5.1 Apache
WEB05-10	5.1.1 Uninstallation of Apache
WEB05-30	5.1.2 Installation of Apache
WEB05-60	5.2 Tomcat
WEB05-60	5.2.1 Uninstallation of Tomcat
WEB05-100	5.2.2 Installation of Tomcat
WEB05-150	5.3 Flash Player
WEB05-150	5.3.1 Uninstallation of Flash Player
WEB05-180	5.3.2 Installation of Flash Player
WEB06-10	6. Before using the Alert setting/FTP transfer function

1. Before using Web Console

Settings of JAVA and an IP address are required to use Web Console on SVP.

Refer to “Hitachi Command Suite User Guide” or “Hitachi Virtual Storage Platform G1000 Mainframe System Administrator Guide” for the specification of the commonness part of Web Console for the operation and conventions.

This screen will not be displayed from the next startup when you check the check box of “Always trust content from this publisher.” and select (CL) [Yes].

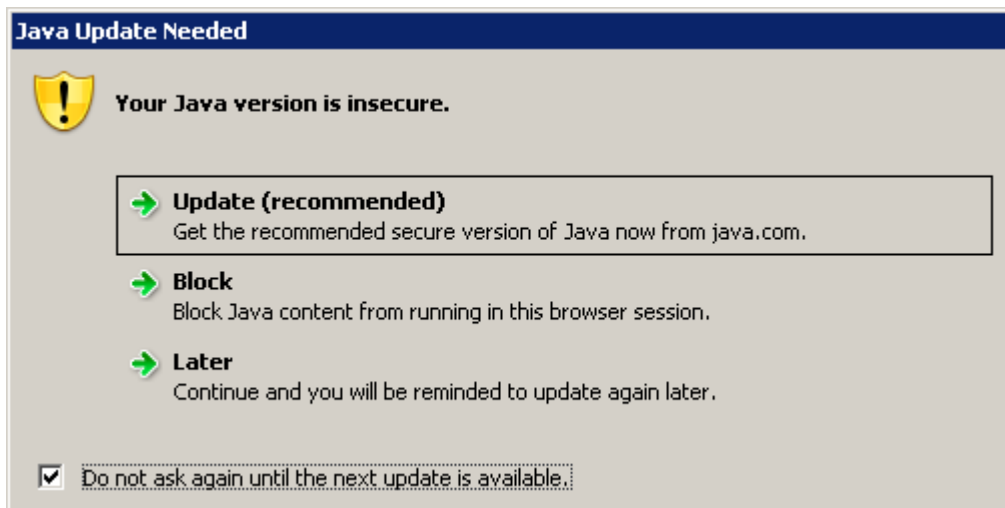


NOTE: They are notes for a remote desktop connection to SVP.

There are cases that users copy a file from SVP to the maintenance PC via Remote Desktop in Web Console.

This screen will not be displayed from the next startup when you check the check box of “Do not ask again until the next update is available.” and select (CL) [Later].

If you select [Update(recommended)] or [Block], please restart Web Console.



1.1 Setting IP Address and Network

When using Web Console from a remote personal computer or using the SNMP Agent function, a connection to an external LAN and a setting of a network is required (See [LOC04-40](#)).

Please setup according to the worksheet which the user's administrator indicated at the time of a new Installation.

Please setup the contents which took the duplicate from a setup on SVP before REPLACE.

NOTE: Don't change connection name. If you do so, Web Console will not work.

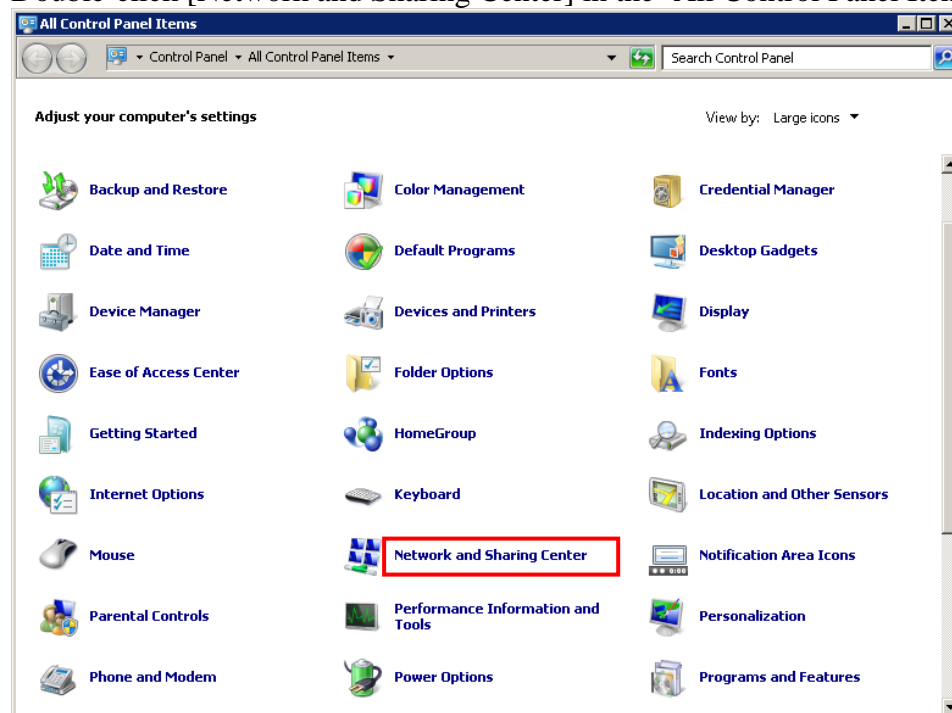
(1) Setting IP address

(a) Opening the Control Panel window

Select (CL) [Control Panel] from the [Start] menu.

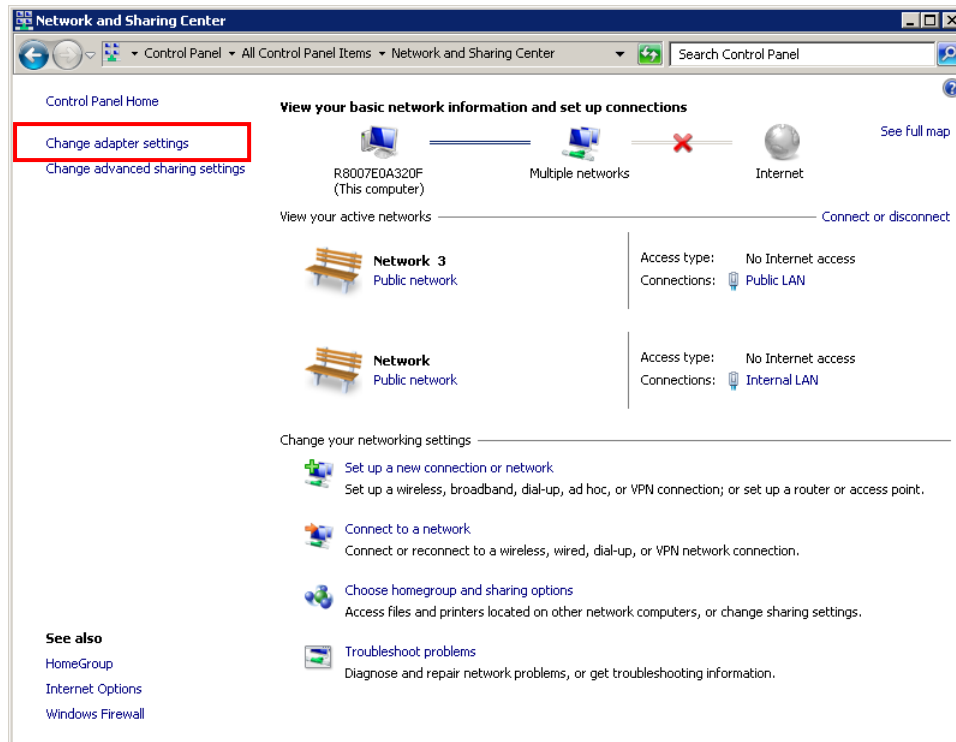
(b) Opening the Network and Sharing Center window

Double-click [Network and Sharing Center] in the 'All Control Panel Items' window.



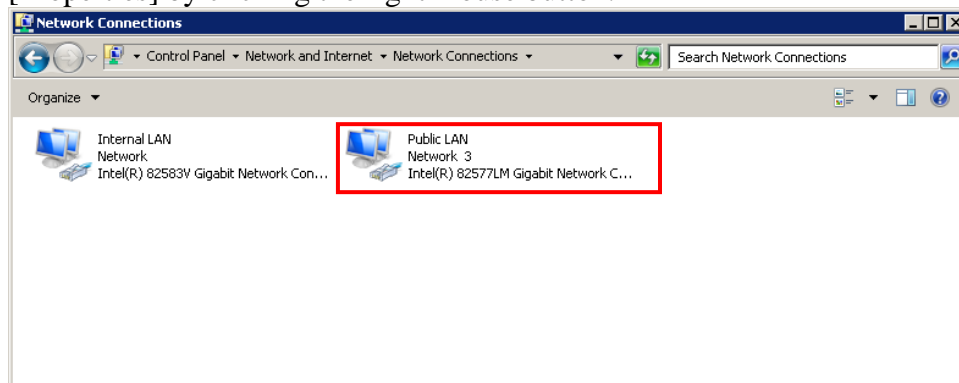
(c) Opening the Network Connections window

Select (CL) [Change adapter settings] in the left side of 'Network and Sharing Center' window.

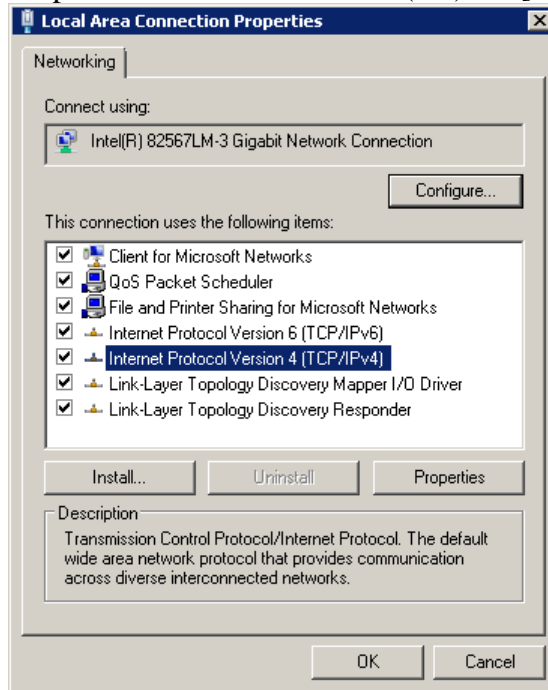


(d) Opening the Public LAN Properties window

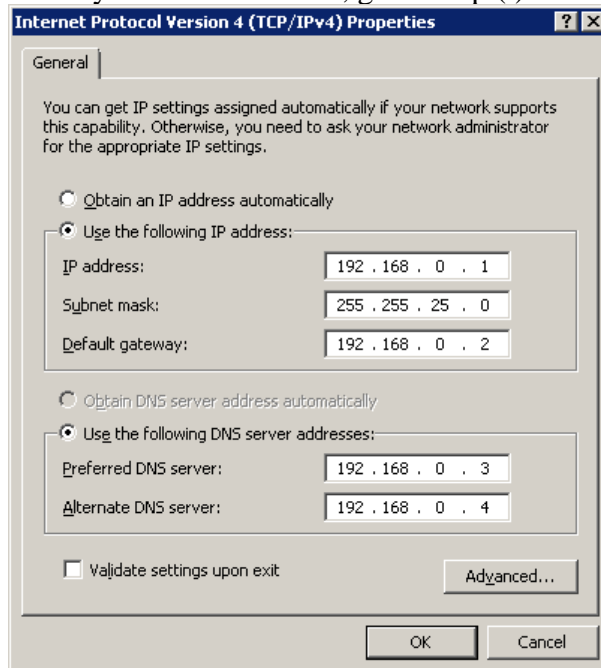
Select (CL) [Public LAN] in the 'Network Connections' window and select (CL) [Properties] by clicking the right mouse button.



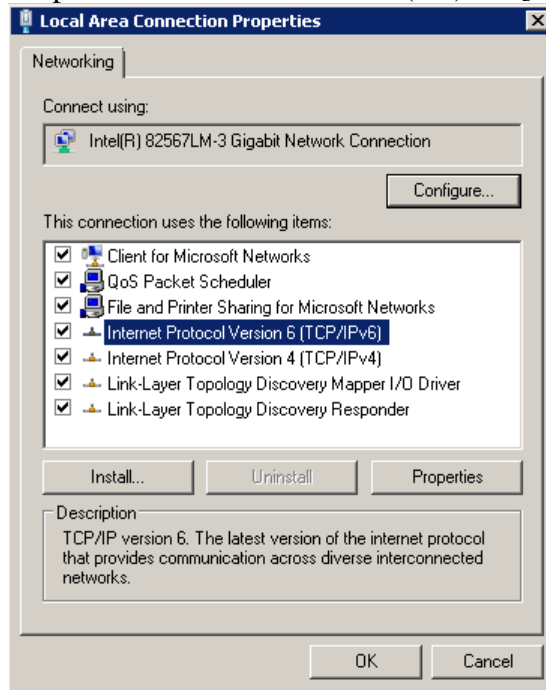
- (e) Opening the Internet Protocol Version 4 (TCP/IPv4) Properties window
Select (CL) [Internet Protocol Version 4 (TCP/IPv4)] in the 'Local Area Connection Properties' window and select (CL) the [Properties] button.



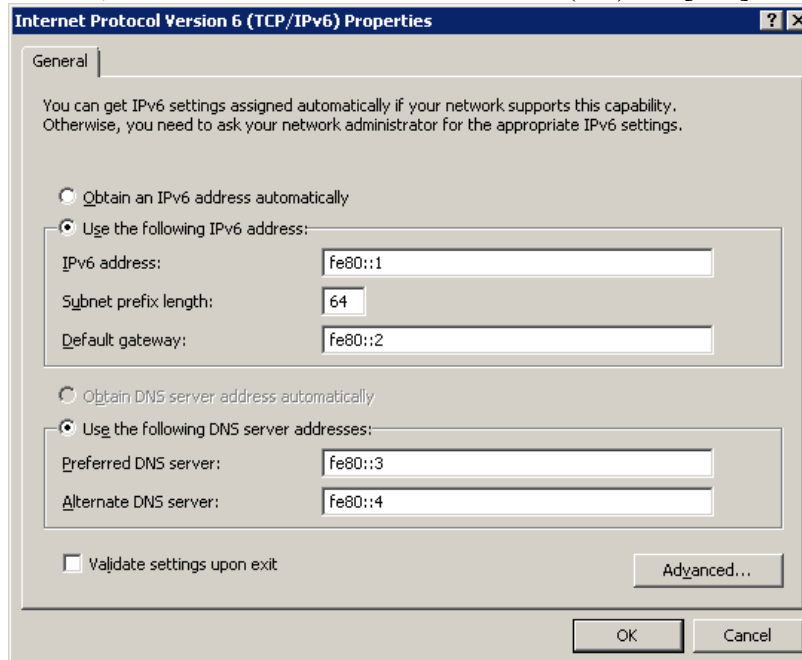
- (f) Setting the external IP address
Set the "IP address", "Subnet mask", "Default gateway", "Preferred DNS server" and "Alternate DNS server" and select (CL) the [OK] button.
When you do not set IPv6, go to Step (i).



- (g) Opening the Internet Protocol Version 6 (TCP/IPv6) Properties window
Select (CL) [Internet Protocol Version 6 (TCP/IPv6)] in the ‘Local Area Connection Properties’ window and select (CL) the [Properties] button.



- (h) Setting the external IP address
Set the “IPv6 address”, “Subnet prefix length”, “Default gateway”, “Preferred DNS server”, “Alternate DNS server” and select (CL) the [OK] button.



- (i) Closing the window
After the setting is completed, select (CL) the [OK] button in the “Local Area Connection Properties” window.

(2) Setting Network Connection Properties

Checking whether the setting of the network (setting of Config) must be changed or not. Ask the customer about the setting of the switch (HUB) connected to the SVP. When the case is not the above, terminate the operation by selecting (CL) the [OK] button.

There is a case where the setting must be changed depending on the customer's environment. The case where the change is required is as follows.

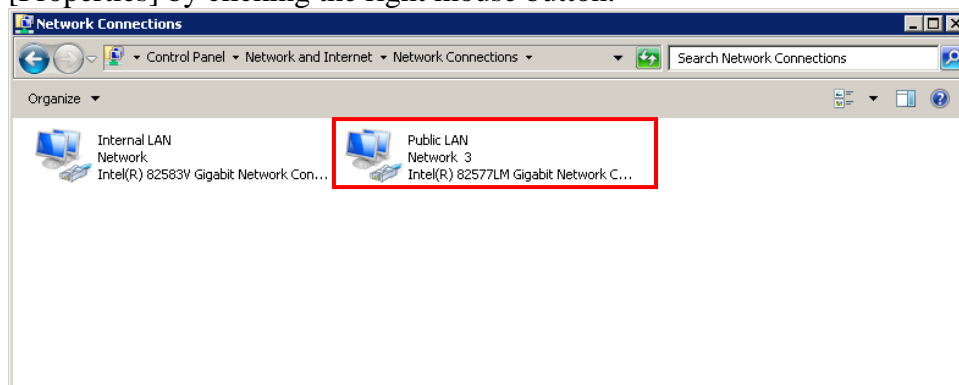
(Normally, no setting change is required.)

- When the switch (HUB), setting of which is fixed as '100M Full Duplex', is connected to the PC of the SVP

NOTE: The setting of the SVP made is "Auto Negotiation".

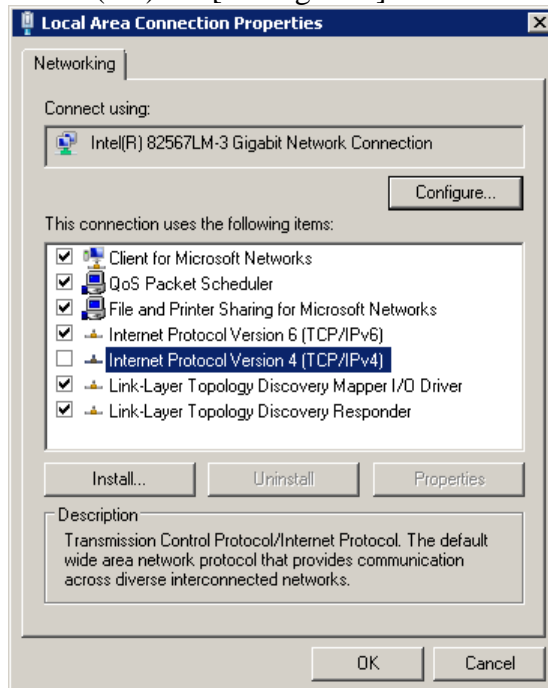
(a) Opening the Public LAN Properties window

Select (CL) [Public LAN] in the 'Network Connections' window and select (CL) [Properties] by clicking the right mouse button.



(b) Opening the configuration windows

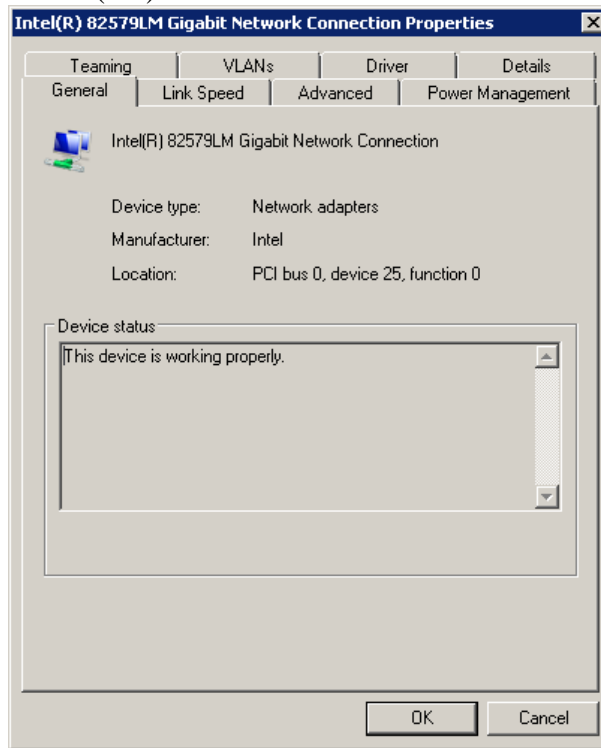
Select (CL) the [Configure...] button in the window.



(c) Switching the tab

After the [Configure...] button is pressed, the following window is displayed.

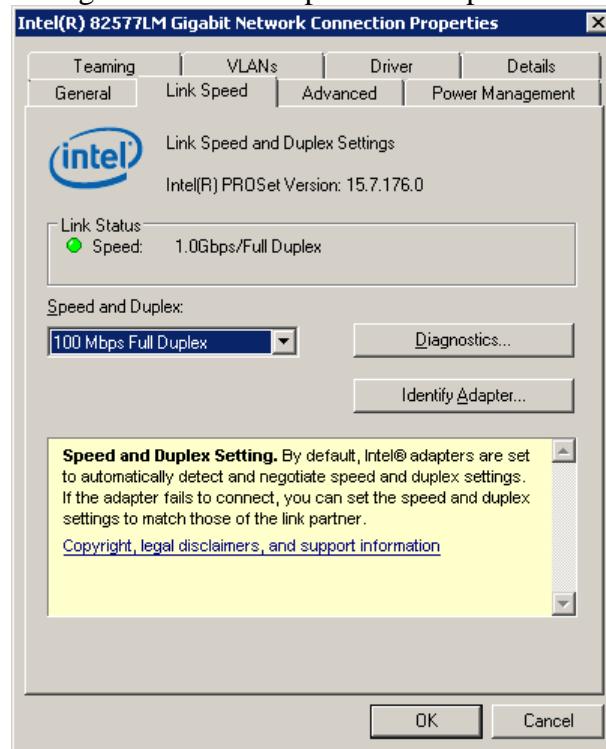
Select (CL) the 'Advanced' tab in the following window.



(d) Setting the Connection Properties

After the 'Link Speed' tab is selected, the following window is displayed.

Change the value of 'Speed and Duplex' from 'Auto Detect' to '100Mbps Full Duplex'.



(e) Applying the settings and closing the window

Return the window to 'Local Area Connection Properties' by pressing (CL) the [OK] button and close the window by pressing the [OK] button.

NOTE: When you use Web Console only with the IPv6 connection, set it referring to [WEB04-10](#).

1.2 Check of Configuring Web Console over a Firewall

When you connect Web Console and the SVP over a firewall, make sure to connect them through the following TCP/IP port numbers to configure the firewall:

- FTP (File Transfer Protocol): 21 (TCP)
- HTTP (Hypertext Transfer Protocol): 80 (TCP)
- SNMP (Simple Network Management Protocol): 161 (UDP)
- SLP (Service Location Protocol): 427 (TCP)
- HTTPs (Hypertext Transfer Protocol over Secure Socket Layer): 443 (TCP)
- RMI (Remote Method Invocation): 1099 (TCP)
- SMI-S: 5989 (TCP)
- RMI: 51099 (TCP)
- RMI: 51100 (TCP)

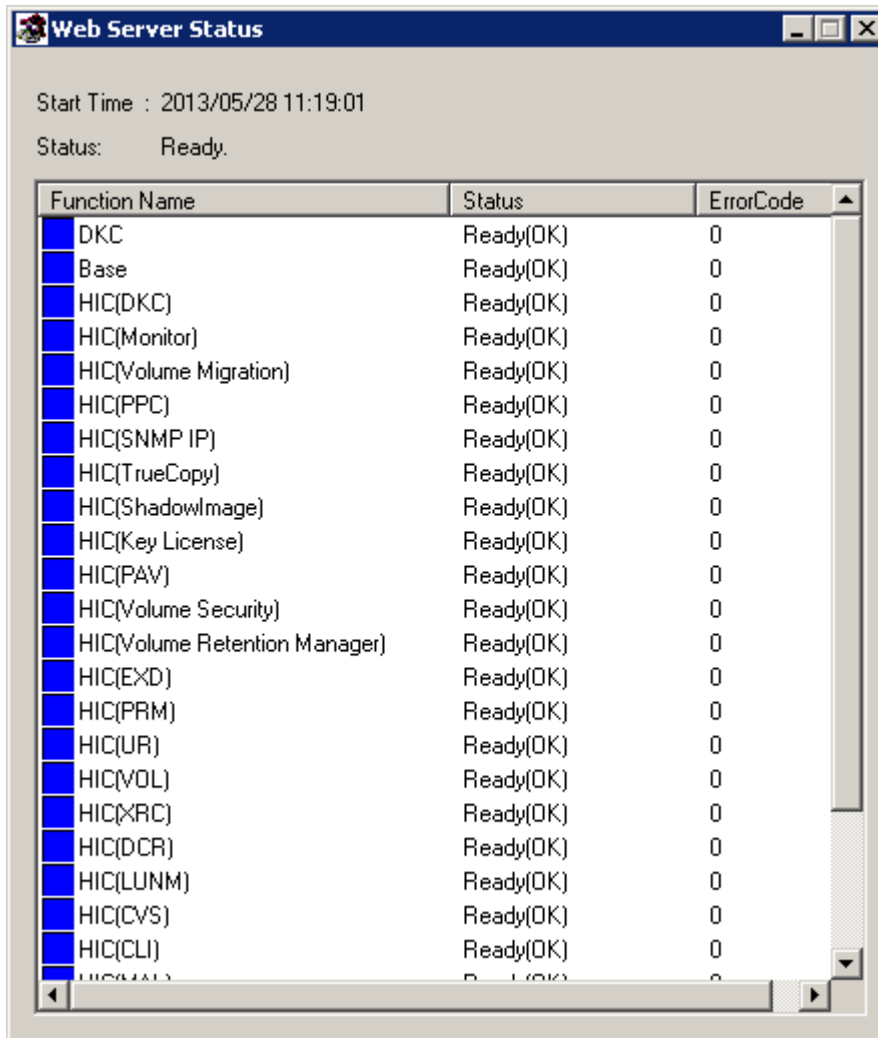
NOTE: When connecting Web Console with SVP over the firewall, you must configure the firewall to allow communication through these port numbers because the firewall is enabled by default.

2. Web Console

2.1 Specifications of Web Server Status

Activate RISMAN, which is a program for accepting requests of a client and for performing high-speed processing through having structures of the RMI server and RAID in the memory, in order to make Web Console operate.

The window was always displayed as DKC460I. It does not usually displays as DKC510I/DKC610I/DKC710I/DKC810I. When the Web Server Status button of SVP launcher is pressed, the window as shown below displays.



Function Name	Status	ErrorCode
DKC	Ready(OK)	0
Base	Ready(OK)	0
HIC(DKC)	Ready(OK)	0
HIC(Monitor)	Ready(OK)	0
HIC[Volume Migration]	Ready(OK)	0
HIC(PPC)	Ready(OK)	0
HIC(SNMP IP)	Ready(OK)	0
HIC(TrueCopy)	Ready(OK)	0
HIC(ShadowImage)	Ready(OK)	0
HIC(Key License)	Ready(OK)	0
HIC(PAV)	Ready(OK)	0
HIC[Volume Security]	Ready(OK)	0
HIC[Volume Retention Manager]	Ready(OK)	0
HIC(EXD)	Ready(OK)	0
HIC(PRM)	Ready(OK)	0
HIC(UR)	Ready(OK)	0
HIC(VOL)	Ready(OK)	0
HIC(XRC)	Ready(OK)	0
HIC(DCR)	Ready(OK)	0
HIC(LUNM)	Ready(OK)	0
HIC(CVS)	Ready(OK)	0
HIC(CLI)	Ready(OK)	0

Web Console cannot operate until all the statuses above become Ready(OK).

- Start Time: Time when RISMAN was activated.
- Status: Processing is displayed when RISMAN has the right of maintenance or Ready when it has not. (The mode can be changed to Modify even in the Processing status, however, a maintenance work cannot be done.)
- This window is started by pressing the “Web Server Status” button on the ‘SVP’ window.

- Function Name

	Name	Description	Part code
1	DKC	Displays whether the DKC is ready or not.	0002
2	Base	Displays the status of the management of configuration information.	0002/0003
3	HIC(DKC)	Displays the state of initialization of the common function.	8005
4	HIC(Monitor)	Displays the state of initialization of the Performance Monitor function.	5105
5	HIC (Volume Migration)	Displays the state of initialization of the Volume Migration function.	5205
6	HIC(PPC)	Displays the state of initialization of the Server Priority Manager function.	5305
7	HIC(SNMP IP)	Displays the state of initialization of the SNMP Information function.	0305
8	HIC(TrueCopy)	Displays the state of initialization of the Remote Copy function.	6005/6105
9	HIC(ShadowImage)	Displays the state of initialization of the ShadowImage function.	7005/7105
10	HIC(Key Licence)	Displays the state of initialization of the Key License function.	0405
11	HIC(PAV)	Displays the state of initialization of the PAV function.	9005
12	HIC (Volume Security)	Displays the state of initialization of the Volume Security function.	9105
13	HIC(Volume Retention Manager)	Displays the state of initialization of the Volume Retention Manager z/OS® / Data Retention Utility function.	9205/9605
14	HIC(EXD)	Displays the state of initialization of Universal Volume Manager function.	0605
15	HIC(PRM)	Displays the state of initialization of Virtual Partition Manager function.	8505
16	HIC(UR)	Displays the state of initialization of the Universal Replicator function.	6505/6605
17	HIC(VOL)	Displays the state of initialization of the Quick Shadow / Dynamic Provisioning function.	3005
18	HIC(XRC)	Displays the state of initialization of the XRC function.	6805
19	HIC(DCR)	Displays the state of initialization of the Cache Residency Manager function.	4005
20	HIC(LUNM)	Displays the state of initialization of the LUN Manager function.	1005
21	HIC(CVS)	Displays the state of initialization of the Volume Manager function.	3305
22	HIC(MAL)	Displays the state of initialization of the E-Mail information function.	8605
23	HIC(MNT)	Displays the state of initialization of the Maintenance function.	8705
24	HIC(RPT)	Displays the state of initialization of the Report function.	8805
25	HIC(RSG)	Displays the state of initialization of the Resource Group function.	20705
26	HIC(SIM)	Displays the state of initialization of the SIM Syslog information function.	8905

- Status

	Display	Color	Meaning
1	Not Initialize	Gray	Initialization is not started yet.
2	Initialize(Stat)	Yellow	Initialization is in progress.
3	Initialize(Retry)	Yellow	Initialization failed and it is being retried.
4	Ready(OK)	Blue	Ready for operation
5	Refresh(Start)	Green	Refreshment is in progress. The internal buffer is being initialized after a writing from the SVP / SNMP / Web Console has been completed.
6	Refresh(Retry)	Green	Refreshment failed and is being retried.
7	Initial(Error)	Red	Initialization failed. (It is retried every other minute) (*1) (*3)
8	Refresh(Error)	Red	Refreshment failed. (It is retried every other minute) (*1)
9	Initialize(Pause)	Yellow	Initialization temporarily stops. (*2)
10	Refresh(Pause)	Yellow	Refreshment temporarily stops. (*2)

NOTE:

- Any of the statuses is Initialize(Stat) / Refresh(Start) / Initialize(Retry) / Refresh(Retry), no maintenance work can be done from an SVP. The message “INS2268E” is displayed on the SVP.
However, it changes to the state of Initialize(Pause) / Refresh(Pause) in about 10 seconds and the maintenance work on the SVP may be possible.
- When an initialization or refreshment operation fails, a retrial operation is performed. When you want to do a maintenance work, do it when the Status is Ready. (Otherwise, an SVP rebooting, which is done after executing Define Information Files or All Configuration Files for alteration of the Config, may fail.)
- While an SVP maintenance work is being done, an initialization or refreshment operation fails and the status becomes Retry. When the maintenance work is completed, close the SVP window immediately.
- Operation of Web Console for a part whose status is not Ready(OK) cannot be done.
- There is a possibility the configuration is being changed from a user application (RAID Manager etc.) other than Storage Navigator if the display of Initialize(Start) / Refresh(Start) remains as is for a while. It will turn into the state of Ready(OK) a while after the configuration change is completed performed from the user application.

- *1: When xxxx(Error) status is displayed for more than 2 minutes without, there may be a problem just on display.
If you can reboot by pressing Web Console button and can press the each function button normally, there is no problem.
When DKC has been powered off, it is likely to turn into the state of xxxx(Error).
After DKC has been powered on for a while, it turns into the state of Ready(OK).
- *2 Initialization/Refresh is restarted by changing the SVP to the View mode.
- *3 When a storage system is ended without shutting down SVP, “Initialize(Error)” may be displayed at the time of initialization of RISMAN, a retry recovers.

- Error Code

When an error occurs, its error code is displayed.

Refer to errors which occur in each part shown in the list of Web Console messages.

(Part codes are listed in the item of Function Name.)

2.2 Procedure for Activation Using SVP

When SVP is logged in Remote Desktop, Web Console automatically starts up. Select [Maintenance]-[Maintenance Components] from the Action menu to start the maintenance screen.

The screenshot displays the Hitachi Device Manager Web Console interface. The left sidebar shows the 'Explorer' menu with 'Storage Systems' expanded, highlighting 'Storage(S/N:1)'. The main content area shows the 'Storage(S/N:1)' configuration page, which includes an 'Edit Storage System' form and an 'Allocation Summary' section.

Storage(S/N:1) Configuration:

Storage		Microcode Version		Main	
Storage System Name	VSP G1000	SVP		80-02-01/30	
Storage System Type	1	RMI Server		07_06_00	
Serial Number	localhost	Total Cache Size		237.25 GB	
IP Address					
Contact					
Location					

Allocation Summary:

Internal/External: Total Capacity Unit: Appropriate

Physical Summary:

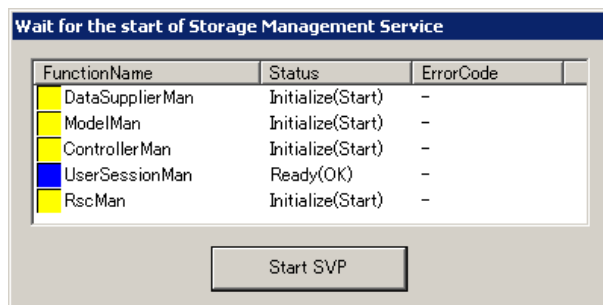
Physical Capacity	Number of Physical Logical Devices
Allocated	0
Reserved	0
Used DP Pool	0
Unused DP Pool	-
Other	0
Available Space	640
Unallocated	-
Free Space	640
Physical Total	6.29 TB

Virtual Summary:

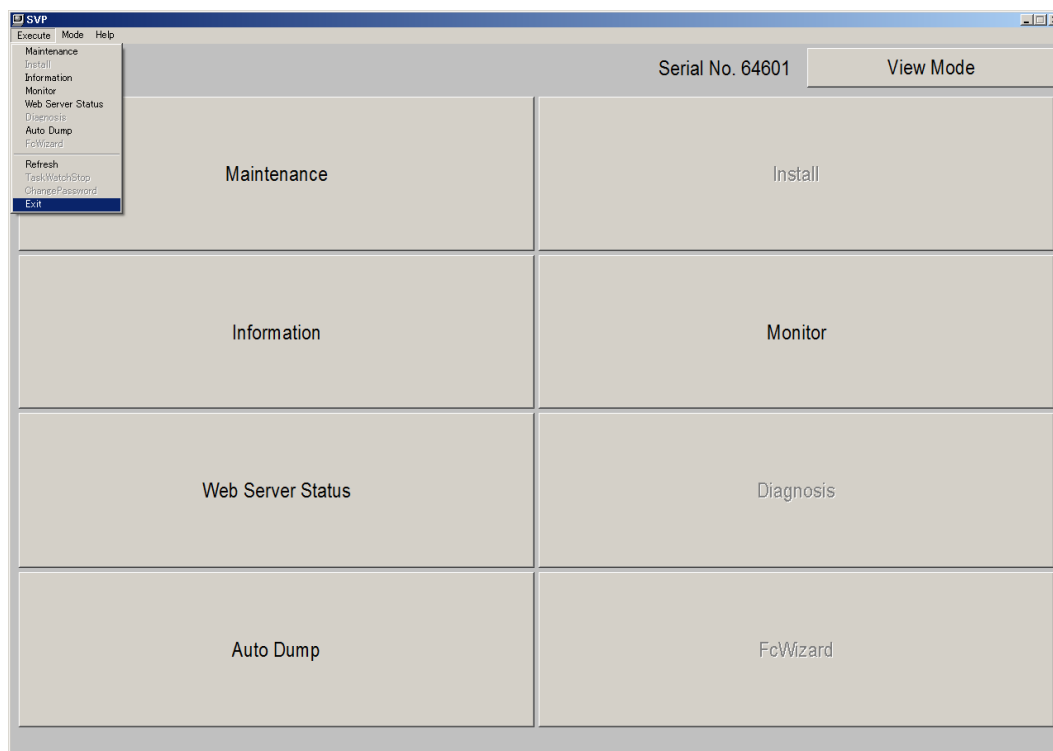
Virtual Capacity	Number of Virtual Logical Devices
DP Allocated	0
DP Unallocated	0
Other	0
Virtual Total	0

Total DP Subscription Rate: 0% Total Number of LDEVs: 640 (Max Allowed: 65280)

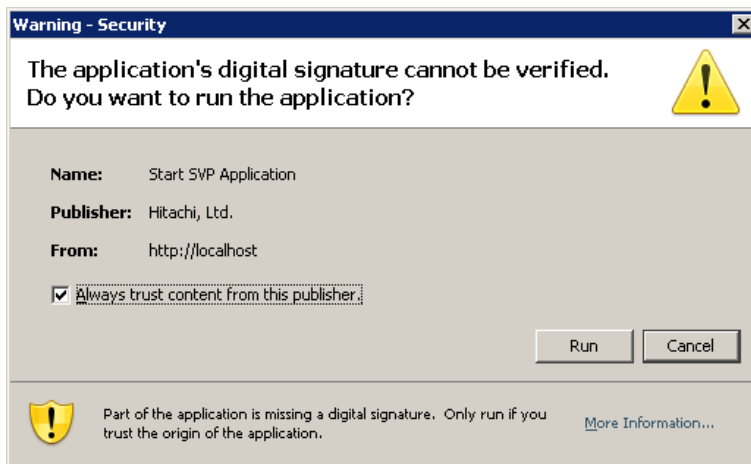
NOTE1: When Web Console is not ready, the screen below is displayed. Selecting (CL) [Start SVP] will start the maintenance screen.



NOTE2: Just after the microcode updates, the maintenance screen starts without the main window of Web Console. If the maintenance screen is closed, the main window of Web Console starts automatically (If Web Console is not ready, the above screen appears until it is ready). If you select (CL) the [Start SVP] button, the maintenance screen starts. When you close the maintenance screen, the main window of Web Console starts automatically. If you want to close the maintenance screen, change [View Mode] to [Modify Mode] and then select (CL) [Execute]-[Exit].



If the security warning as shown in the following figure is displayed, select (CL) [Run].



NOTE: Do not activate Web Console from the SVP by specifying the URL on Internet Explorer.

If the screen below is displayed, select (CL) [Allow].



2.3 Specifications Common to Functions of Web Console

Refer to “Hitachi Command Suite User Guide” or “Hitachi Virtual Storage Platform G1000 Mainframe System Administrator Guide” for the specification of the commonness part of Web Console.

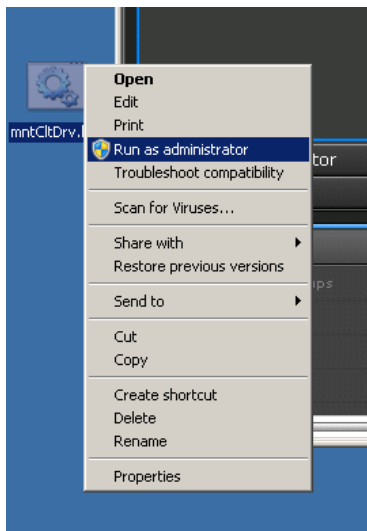
2.4 Before Using Web Console (You are requested to read this without fail)

The operation of Web Console is similar to the operation of Storage Navigator. Refer to Storage Navigator Conventions of “Hitachi Command Suite User Guide” or “Hitachi Virtual Storage Platform G1000 Mainframe System Administrator Guide”.

2.4.1 How to use maintenance PC's directory

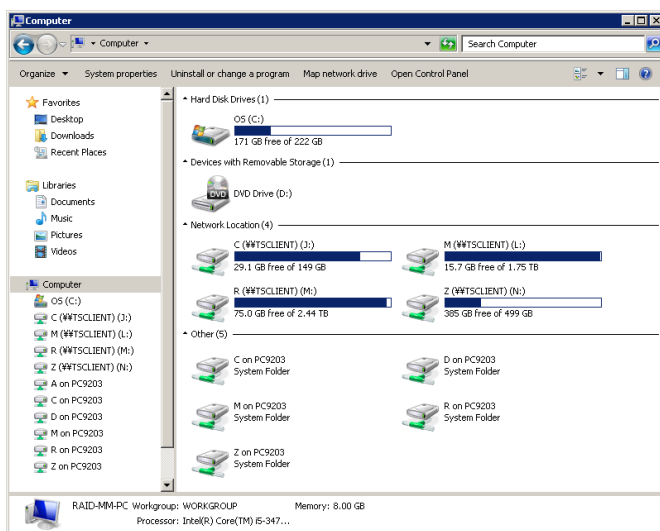
If you use maintenance PC's directory, following this procedure. When maintenance PC's directory configuration is changed, you should execute again

- Installing License Key
 - Downloading Audit Log
 - Downloading Reports
 - Exporting displayed information etc.
1. If you use storage media like a USB memory, insert it to maintenance PC in advance.
 2. Right click “mntCltDrv.bat” on SVP's desk top, select [Run as Administrator].



Mounted Maintenance PC's directory is displayed like "C (\\TSCLIENT) (j:)" on the file chooser of Web Console.

NOTE: It's impossible to use "C on {Maintenance PC's name}".



2.4.2 Auto Account Lock

Two functions are available to avoid brute force attacks on user names and passwords. One of them locks the user account for a given length of time, and the other disables the user account.

(1) Account lock function

When user login fails for a certain number of times in a row, the function locks the user account for a given length of time.

(2) Account disabling function

When user login fails for the specified number of times in a row, the function disables the user account.

NOTE: If all accounts registered to SVP are disabled, you cannot log into SVP
(Authentication can be done in the authentication server).
Prevent all accounts from being disabled.

For how to change to the function that disables user accounts and to change back to the function that locks user accounts, see the INSTALLATION SECTION, “5.5 Switch the Auto Account Lock Function” ([INST05-05-10](#)).

2.5 Actions to Be Taken According to Result of Trouble shooting

Refer to Trouble shooting of “Hitachi Command Suite User Guide” or “Hitachi Virtual Storage Platform G1000 Mainframe System Administrator Guide”.

NOTE: If the trouble is not solved in spite of it, collect a dump and restart the SVP.

	Failure	Recovery action	Remarks
1	The Web Console on the SVP cannot be started and error (10,6027) occurred.	A LAN cable may fall out. Please confirm the LAN cable. If the LAN cable falls out, connect it and reboot SVP.	NOTE
		The versions of Apache and SVP may mismatch. Uninstall Apache and install it again. Refer to the installation procedure of Apache in the WEB CONSOLE SECTION for the installation procedure.	
		Since the Web Console program different from the microprogram version may be started, you need to clear the cache of Java. Select [Start]–[Control Panel], open the control panel, start the control panel of Java, and clear the cache file.	
2	The Storage Navigator PC experiences an error (10,6027), when accessing the SVP from the Storage Navigator PC.	<p>SVP (a Web server) cannot recognize an IP address of Storage Navigator PC or HUB, and please confirm a following item, and Fig. 2.5-1 is reference.</p> <p>(1) Took off an external LAN cable of SVP by installation work or maintenance work, and does not restart do SVP?.</p> <p>(2) Do not do restart of SVP by an Off state with a power supply of LAN machinery (HUB/router) connected to external LAN of SVP with installation work or maintenance work?</p> <p>In case of above, connect external LAN cable of SVP, and please turn a power supply of LAN machinery (HUB/router) into an On state as well, and restart SVP, and please access from Storage Navigator movement PC SVP (a Web server) from it once again.</p>	
3	The wrong information is displayed on Storage Navigator regarding a product name, a vender name and a function name, etc.	Select [Start]–[Control Panel] on Web Console, and then restart SVP.	

(To be continued)

(Continued from the preceding page)

	Failure	Recovery action	Remarks
4	Web Console doesn't start even if SVP is logged in remote desktop.	Web Console doesn't occasionally start while changing the storage system configuration until the change ends. Please wait until the change ends. Please confirm whether the storage system is operated from RAID Manager etc. when Web Console do not start for a long time.	
5	The (20121 107024) error occurred on the main window of Storage Navigator on SVP.	Please respond to the message, and exit the Storage Navigator main window by pressing [Alt] and [F4] key.	
6	After the (20121 107024) error occurs on the main window of Storage Navigator on SVP, the (20121 107025) error is repeatedly displayed.	Please exit the Storage Navigator main window by pressing [Alt] and [F4] key.	
7	It's impossible to use maintenance PC's directory if SVP is logged in remote desktop. • Installing License Key • Downloading Audit Log • Downloading Reports • Exporting displayed information etc.	Please use SVP's directory to import or export files. If you install license key, please move license key's file to SVP's directory and use the file for installing. if you download a file, please download to SVP's directory and move the file for need.	
8	The (20121 107096) error occurs repeatedly on the main window of Storage Navigator on SVP.	Please exit the Storage Navigator main window by pressing [Alt] and [F4] keys.	
9	After a remote desktop connection to SVP is established, an error code is displayed in the 'Wait for the start of Storage Management Service' window.	See the "Storage Navigator Messages Guide" and take the necessary action.	
10	Version update notification dialog of Java and Flash Player is popup.	Don't update Java and Flash Player. If Java and Flash Player is updated, SVP authentication and Storage Navigator function will not work fine.	

When restart SVP by the state that LAN between SVP and Web Console is not connected to justly, there is the case that gets impossible to start Web Console ((10,6027) error occurred).

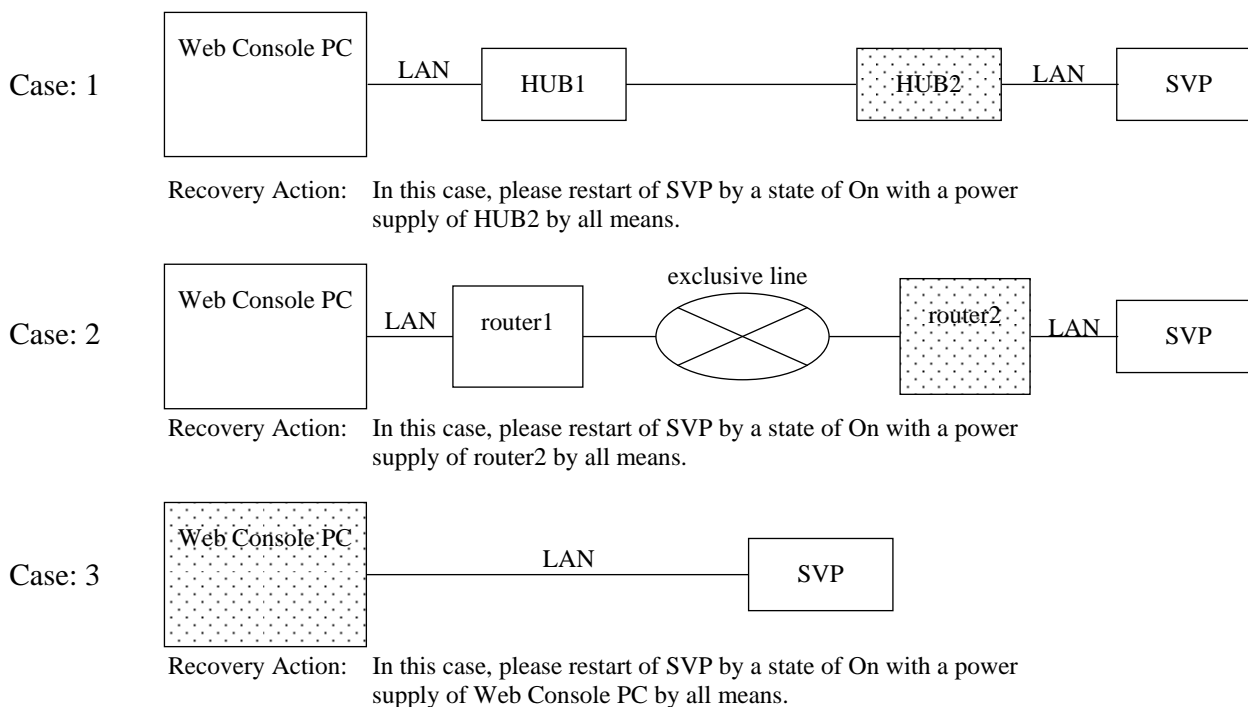


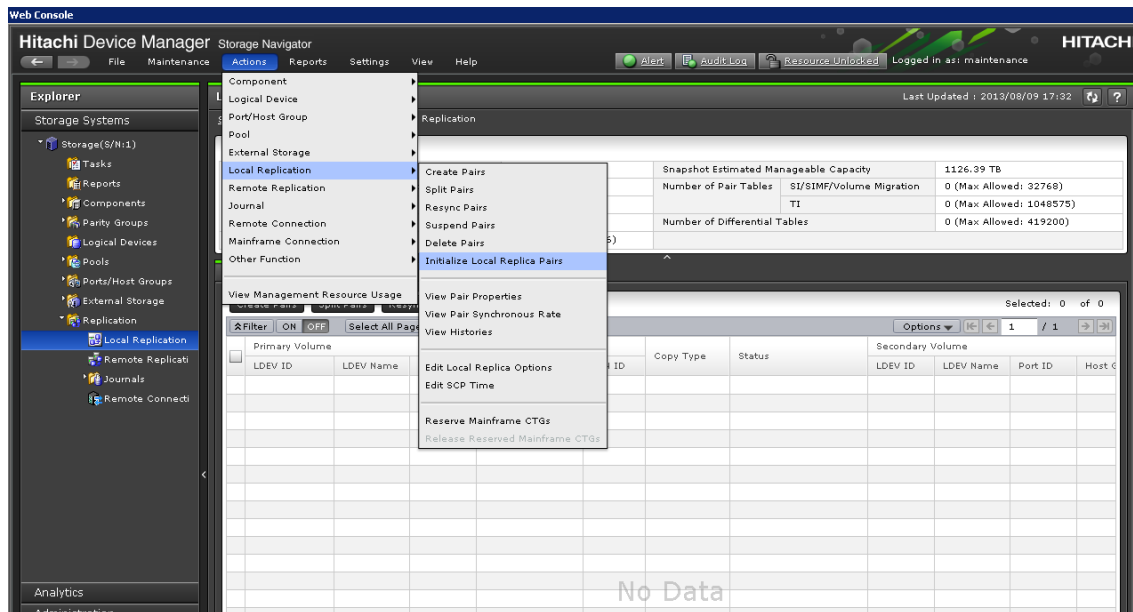
Fig. 2.5-1 Connection Example of LAN

3. Difference from the P.P. Manual

3.1 Local Replication

Select (CL) [Replication]-[Local Replication] at the left of the main window to open 'Local Replication' window.

3.1.1 Initialize Local Replica Pairs



- (1) Select (CL) [Actions]-[Local Replication]-[Initialize Local Replica Pairs] at the top of the main window.

- Initialize Local Replica Pairs

It deletes all the pairs that have been formed by ShadowImage / ShadowImage for Mainframe / Volume Migration / FlashCopy (R) V2 / FlashCopy (R) SE / Thin Image and sets the pair status of the volume to Simplex (to SMPL, in the case of ShadowImage).

Refer to the TROUBLE SHOOTING SECTION "6.5 Initialization Procedure for ShadowImage" ([TRBL06-140](#)) for the Initialize procedure and notes.

To operate the 'Initialize Local Replica Pairs', an entry of a password is required. For the password, refer to the Technical Support Division.

NOTE1: When the Initialize Local Replica Pairs is performed, not only pairs formed by ShadowImage for Mainframe, but also pairs formed by ShadowImage / Volume Migration / FlashCopy (R) V2 / FlashCopy (R) SE / Thin Image are deleted.

NOTE2: Perform the operation only when it is directed by the Technical Support Division.

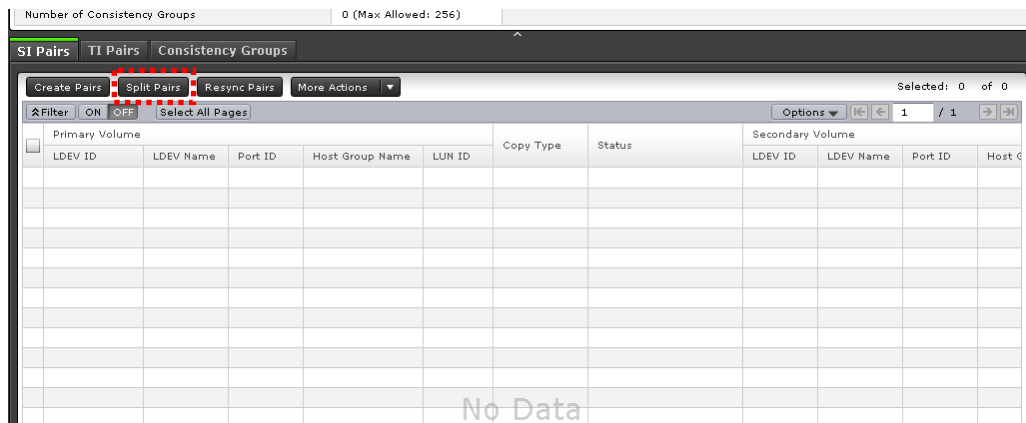
3.1.2 Split Pairs window

Select (CL) [SI Pairs] at the application area to activate.

Select (CL) a volume in Duplex status.

Select (CL) [Split Pairs] to activate 'Split Pairs' window.

(If selecting volumes other than a volume in Duplex status, the operation fails.)



(1) [Split Type] drop-down list

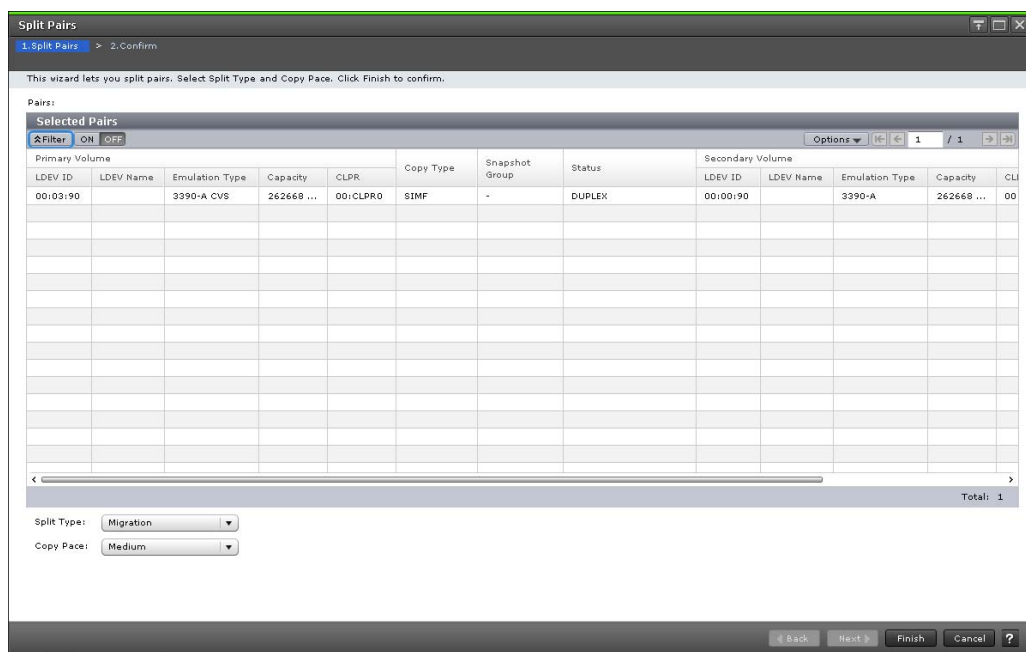
Select migration VOL and open the 'Split Pairs' window.

The [Split Type] drop-down list is fixed in [Migration].

- Migration (split type)

Split pair operation by Migration is split type for exclusive use of Migration VOL.

It execute data migration by the migration VOL.



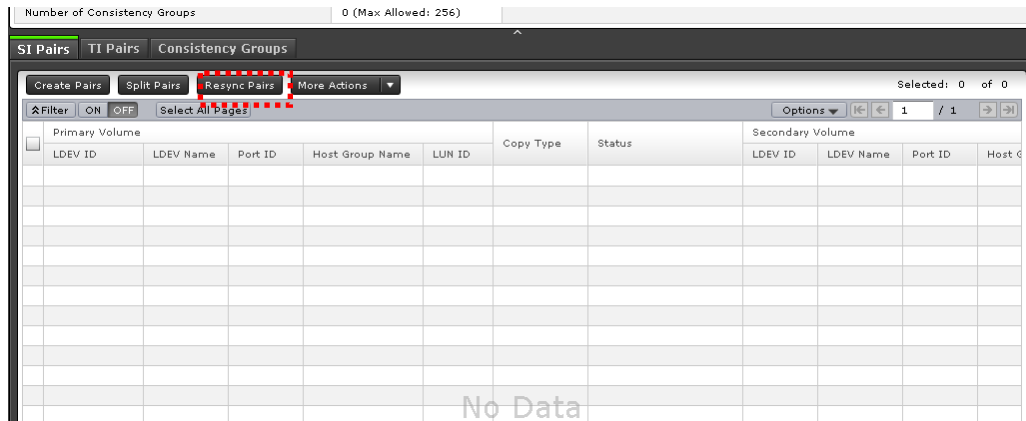
3.1.3 Resync Pairs window

Select (CL) [SI Pairs] at the application area to activate.

Select (CL) a volume in Suspend(Mig.)/SUSPER status.

Select (CL) [Resync Pairs] to activate 'Resync Pairs' window.

(If selecting volumes other than a volume in Suspend(Mig.)/SUSPER status, the operation fails.)



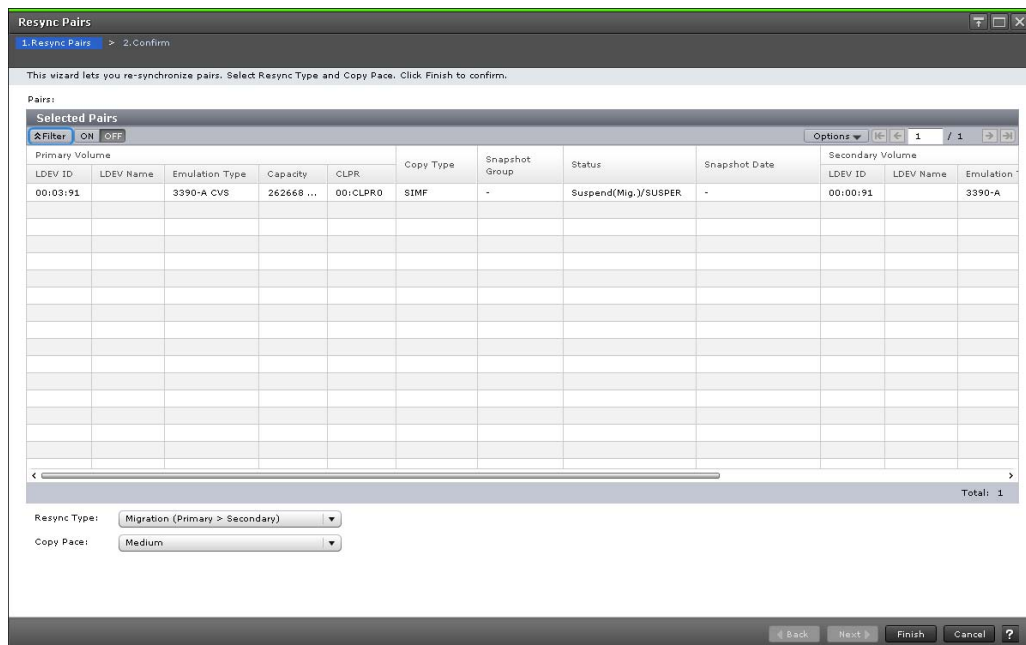
(1) [Resync Type] drop-down list

Select Migration VOL and open the 'Resync Pairs' window.

The [Resync Type] drop-down list is fixed in [Migration(Primary > Secondary)].

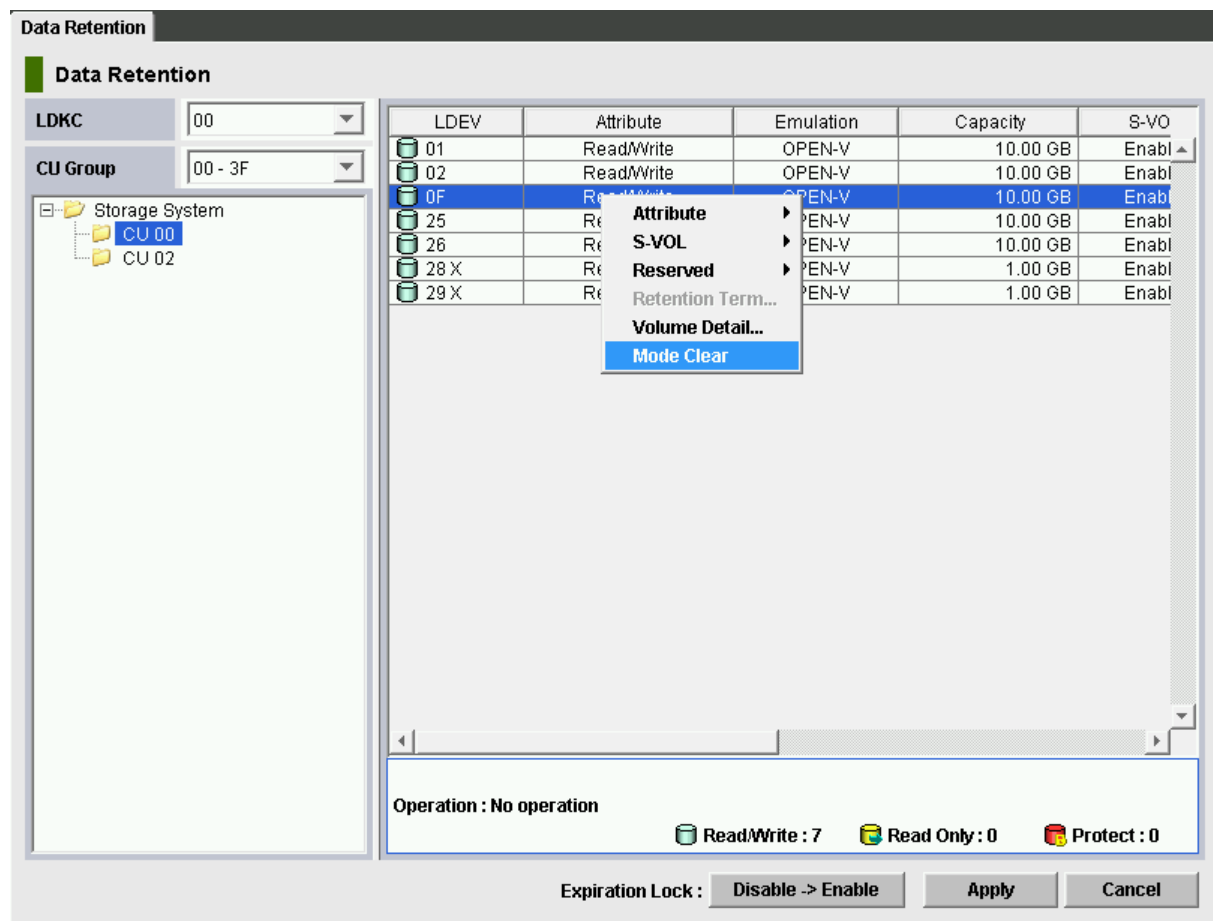
- Migration(Primary > Secondary)

Resynchronize pair operation by Migration is Resynchronize Type for exclusive use of Migration VOL. The copy direction for a normal resync operation is S-VOL to T-VOL, with data migration by the migration VOL.



3.2 Data Retention Utility

Select (CL) [Actions]-[Other Function]-[Data Retention...].



(1) Canceling the mode attribute

In the 'Data Retention' window, when the operation for changing the access attribute is performed, [Mode Clear] is displayed in a pop-up menu.

Use this menu when you want to cancel the attribute, Zer and Inv.

NOTE: For the attributes, Zer and Inv, refer to "Provisioning Guide for Open Systems".

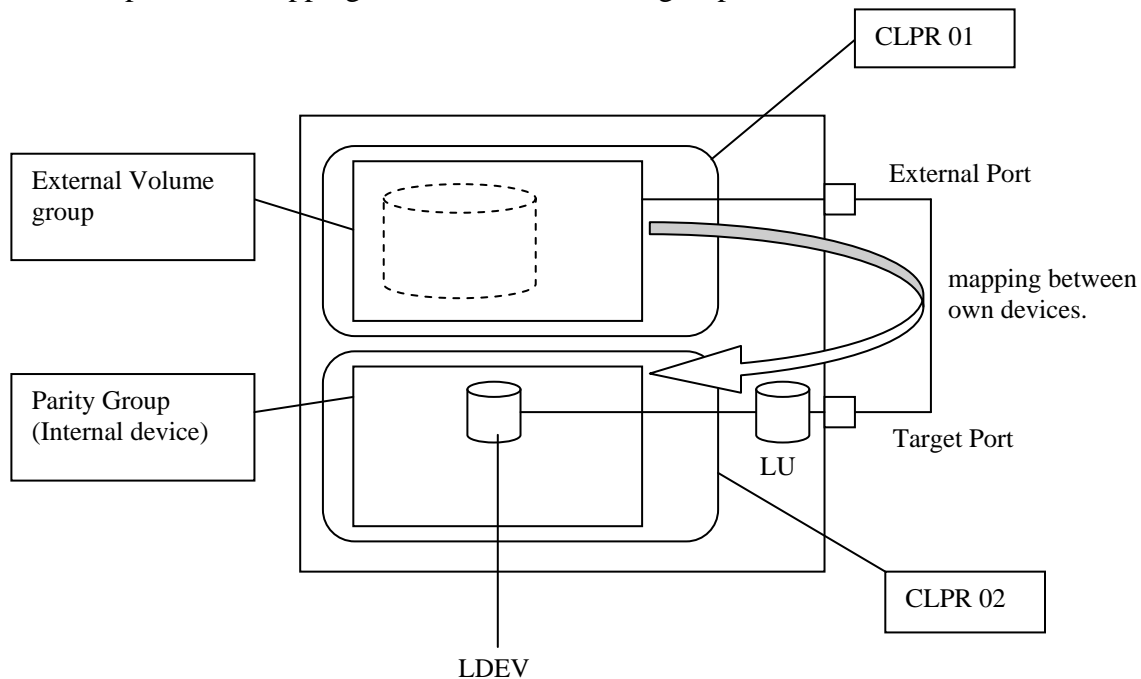
3.3 Universal Volume Manager

3.3.1 Mapping its own volumes

Provided that the External Volume is its own volume, it allows to be mapped as an external storage device. But every LDEV of the external group must be allocated to another CLPR that is different from one which is allocated to some internal LDEVs.

It is shown for example when mapping between own LU and own external group as following.

For example when mapping between own external group



3.3.2 Previous arrangement for mapping its own volumes

The procedure for mapping its own volumes is described below:

1. Login to SVP.
2. Select (CL) [Actions]-[External Storage]-[Edit Policies] on the web console to activate 'Edit Policies' window.

Edit Policies

Set values for External Volume Setting and click Apply.

Allow Simultaneous Creation of LDEVs: ☒ Yes ☐ No

Use External Storage System Configuration: ☒ Yes ☐ No

Number of LDEVs per External Volume:
(1)

Cache Partition:

Cache Mode: ☒ Enable ☐ Disable

Inflow Control: ☐ Enable ☒ Disable

Load Balance Mode:

MP Blade:

Internal Volume Usage: ☐ Enable ☒ Disable

Apply Cancel ?

3. Select (CL) [Enable] on [Internal Volume Usage] item, then select (CL) [Apply].

3.3.3 Note for mapping its own volumes

Mapping its own volumes could be done by SVP only.

The external volumes are available for data migration only.

3.4 Remote Replication

3.4.1 Remote Replica Function Switch

Select (CL) [Actions]-[Remote Replication]-[Edit Remote Replica Function Switch] menu at the top of the Storage Navigator main window to activate 'Edit Remote Replica Function Switch' window.

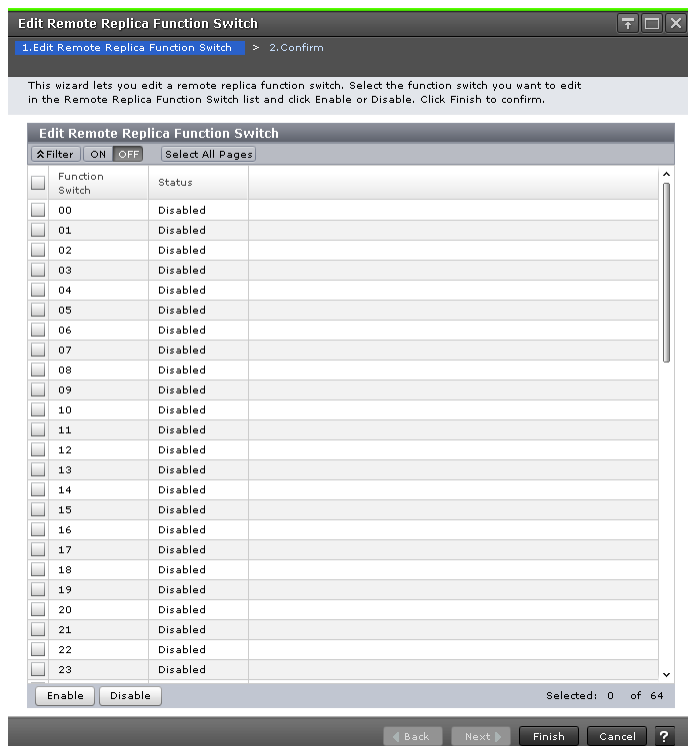
The screenshot displays the Hitachi Device Manager Storage Navigator interface. The 'Actions' menu is open, and the 'Remote Replication' option is selected, which has opened a sub-menu. In this sub-menu, the 'Edit Remote Replica Function Switch' option is highlighted. The main window shows a 'Physical Summary' pie chart and a 'Virtual Summary' table. The 'Physical Summary' table lists various physical capacity units and their usage percentages. The 'Virtual Summary' table lists virtual capacity units and their usage percentages. The 'Total DP Subscription Rate' is 48%, and the 'Total Number of LDEVs' is 640 (Max Allowed: 65280).

Physical Capacity	Usage	Number of Physical Logical Devices
4.80 GB	[1%]	48
314.05 GB	[1%]	1
1.68 TB	[1%]	-
4.40 GB	[1%]	3
353.01 GB	[1%]	50
77.58 TB	[95%]	-
79.93 TB		102

Virtual Capacity	Usage	Number of Virtual Logical Devices
984.80 GB		528
512.00 Mb		10
0.00 Mb		0
985.30 GB		538

Total DP Subscription Rate: 48% Total Number of LDEVs: 640 (Max Allowed: 65280)

3.4.1.1 Edit Remote Replica Function Switch



In 'Edit Remote Replica Function Switch' window, select (CL) function switch to be changed. Select (CL) the [Enable], [Disable] button.

When select (CL) the [Finish] button, confirmation window is displayed. Check the task name, and select (CL) the [Apply] button.

NOTE: Perform the operation only when it is directed by the Technical Support Division.

NOTE: Please refer to "3.4.1.2 Remote Copy Function Switch" for the function allocated in each switch.

3.4.1.2 Remote Copy Function Switch

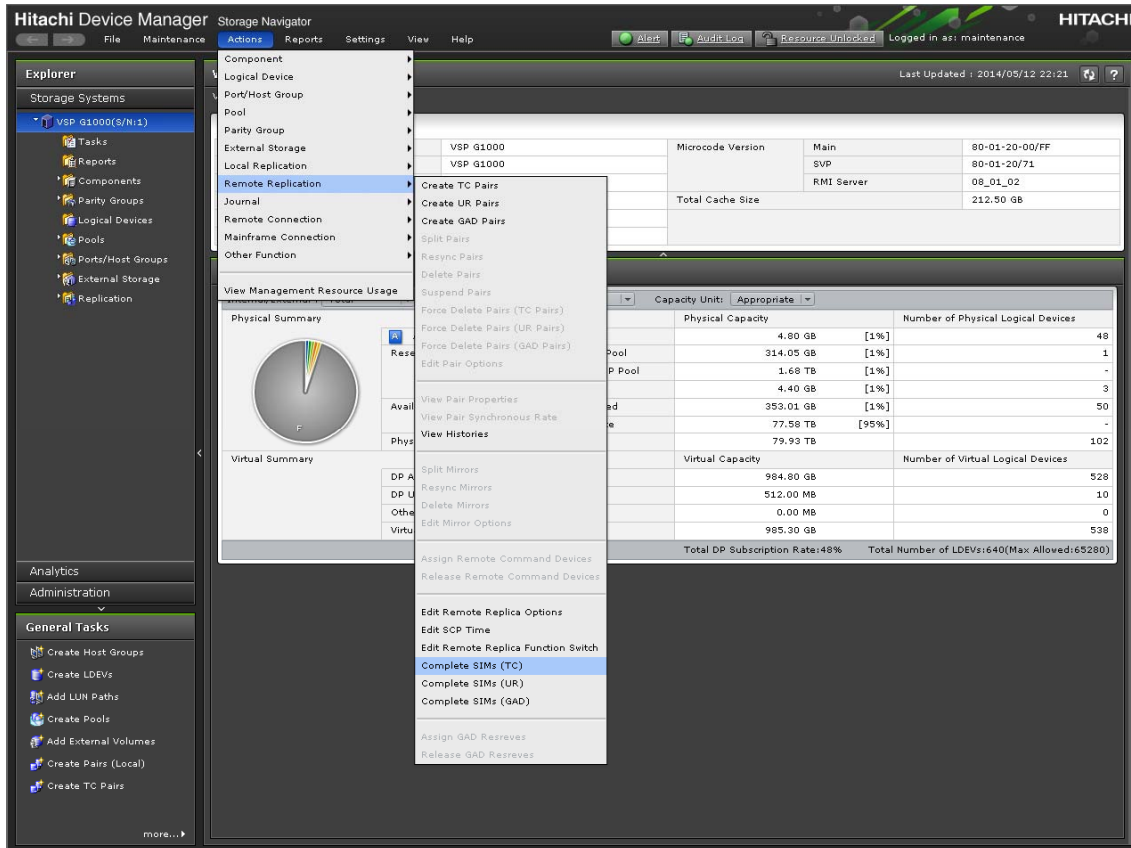
The function allocated in each switch is as follows.

Switch#	Contents
7	Do not report SSB of F/M = FB to HOST in TC-MF.
11	A copy pace is made a maximum 32 Tracks, when “15 Tracks” is selected for the copy pace of Add Pair or Resume Pair in TC/TC-MF. But this function is not applied for OPEN-V, and a copy pace is set “4 Tracks” for OPEN-V.
12	When Add Pair or Resume Pair in TC-MF is operated with the Mainframe Host/Raid Manager, Only M-VOL is setup in the CFW Data option.
15	The path failure threshold values of function switch #17 in TC/TC-MF/GAD are changed. By the combination of function switch #15 and #20 the path failure threshold values are changed.
17	The path is blocked when the number of path failures in TC/TC-MF/GAD reaches the threshold within a certain period.
18	The path is blocked when the number of link failures in TC/TC-MF/GAD reaches the threshold within a certain period. It interlocks with switch #17.
20	The path failure threshold values of function switch #17 in TC/TC-MF/GAD are changed. By the combination of function switch #15 and #20 the path failure threshold values are changed.
21	When Add Pair or Resume Pair in TC-MF is operated with the PPRC command for DKC Emulation = 2107, 3 Tracks is setup in the Initial Copy Pace option.
30	The following functions are supported. <ul style="list-style-type: none"> • When the pair from Storage Navigator is formed, the pair is formed with SyncCTG#7F. • When all the connections from MCU-RCU PATH cut, S-VOL that belongs to SyncCTG#7F is suspended.
33	In the cases that a PDCM function of McData ES3232 is being used on MCU-RCU path in TC/TC-MF/GAD, when response of LOGIN response is late, path status of MCU is changed to non-normal.
36	This bit specifies “Enable” in time stamp option at Add Pair or Resume Pair from GDPS/Raid Manager in TC-MF. TC-MF/UR-MF cascade form makes time stamp option of TC-MF “Enable”, and keeps Consistency of UR-MF. But, the TC-MF pair formation or Resume Pair with GDPS/Raid Manager uses an optional time stamp and because “Enable” cannot be directed, this bit is used.
41	The path is blocked when the number of RIO response time that exceeds the decided time reaches the threshold within a certain period in TC/TC-MF/GAD. The decided time is changed by combination of function switch #41 and #42.
42	The path is blocked when the number of RIO response time that exceeds the decided time reaches the threshold within a certain period in TC/TC-MF/GAD. The decided time is changed by combination of function switch #41 and #42.
43	In the function of switch #17 or switch #41 and #42 in TC/TC-MF/GAD, the path is blocked even if the number of path is less than that is set by minimum path.

3.4.2 Complete SIMs

3.4.2.1 Complete SIMs (TC)

SIM for TrueCopy for Mainframe is deleted. Use this menu when you want to delete SIM before OS IPL.

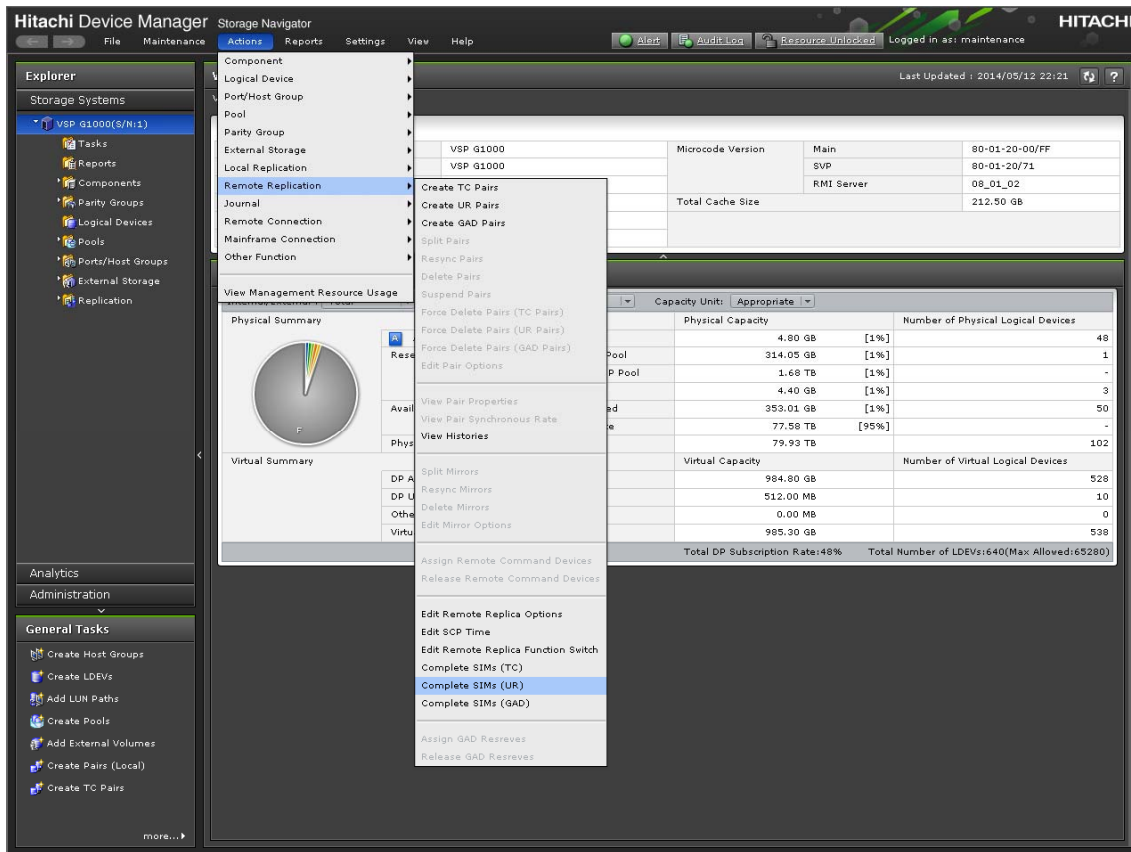


- (1) Select (CL) [Actions]-[Remote Replication]-[Complete SIMs (TC)] at the top of the main window.

NOTE: By this operation, when SIM for TrueCopy for Mainframe is deleted, SIM for TrueCopy is also deleted. TrueCopy for Mainframe only cannot be deleted. The SIM for total storage system is deleted.

3.4.2.2 Complete SIMs (UR)

Use this menu when you want to delete SIM for Universal Replicator for Mainframe.

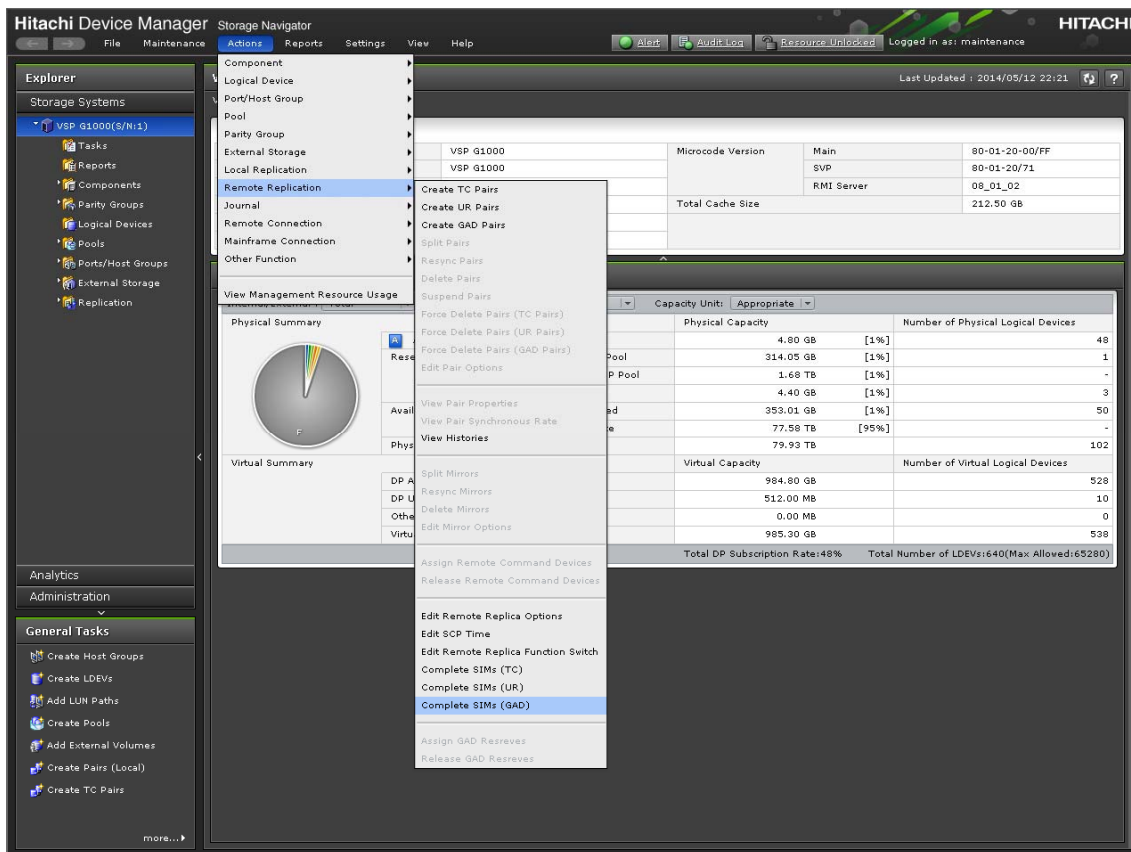


- (1) Select (CL) [Actions]-[Remote Replication]-[Complete SIMs (UR)] at the top of the main window.

NOTE: By this operation, when SIM for Universal Replicator for Mainframe is deleted, SIM for Universal Replicator is also deleted. Universal Replicator for Mainframe only cannot be deleted. The SIM for total storage system is deleted.

3.4.2.3 Complete SIMs (GAD)

Use this menu when you want to delete SIM for global-active device.



- (1) Select (CL) [Actions]-[Remote Replication]-[Complete SIMs (GAD)] at the top of the main window.

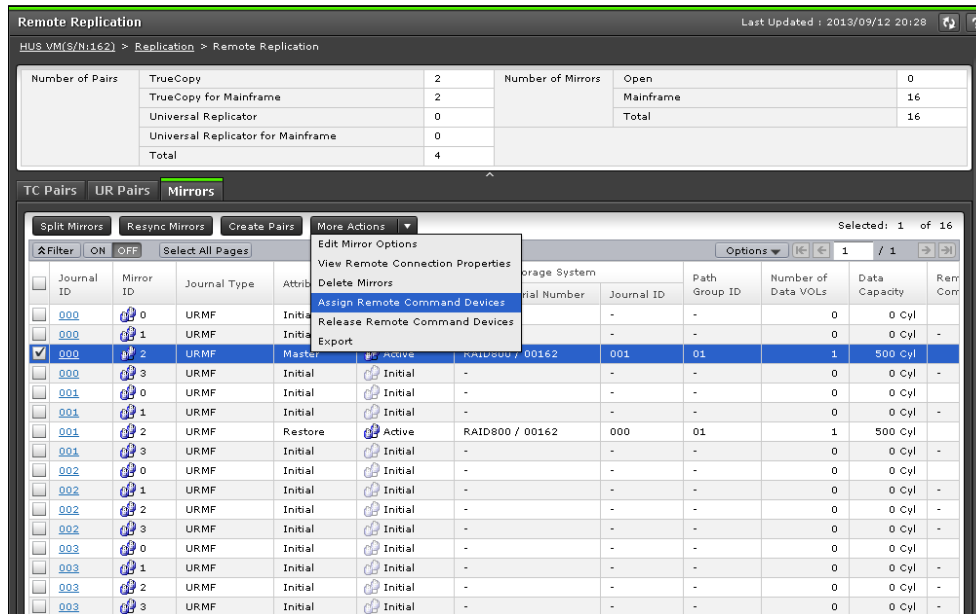
3.4.3 Assign Remote Command Devices window

Select (CL) [Mirrors] at the application area of 'Remote Replication' window.

Select (CL) mirrors in Initial, Active, Halt, Stopped, Hold, Holding, or Hold(Failure) state.

Select (CL) [Assign Remote Command Devices] to activate 'Assign Remote Command Devices' window. (When mirrors other than above state are selected, the operation fails.)

Remote Command Devices can be assigned to mirror in Initial state only when mirror ID is 0.

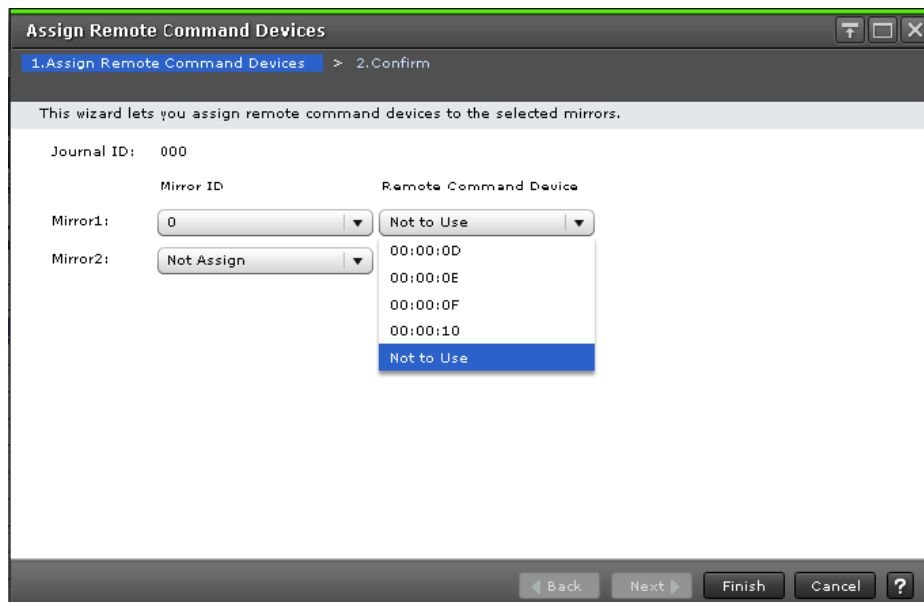


(1) [Remote Command Device] drop-down list.

[Not to Use] is displayed at [Remote Command Device] drop-down list.

- Not to USE

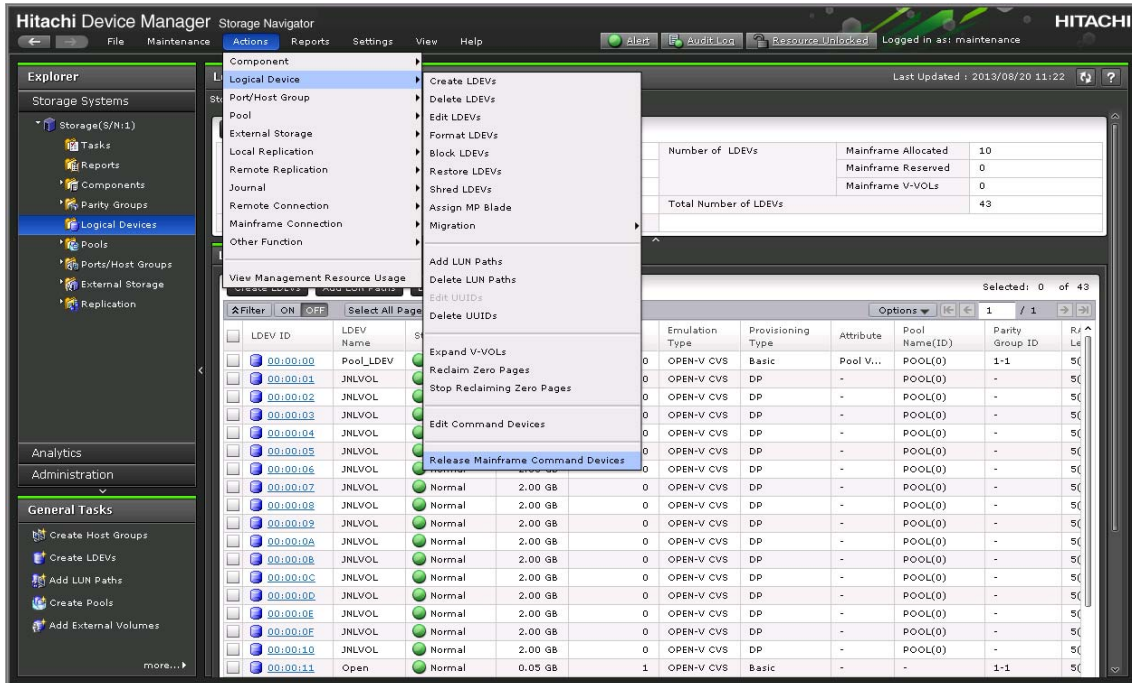
[Not to Use] is selected when not using Remote Command Devices.



3.5 Release Mainframe Command Devices

The command device for Business Continuity Manager is deleted in the lump.

Use this menu when you want to delete command device for Business Continuity Manager after removed the Business Continuity Manager.



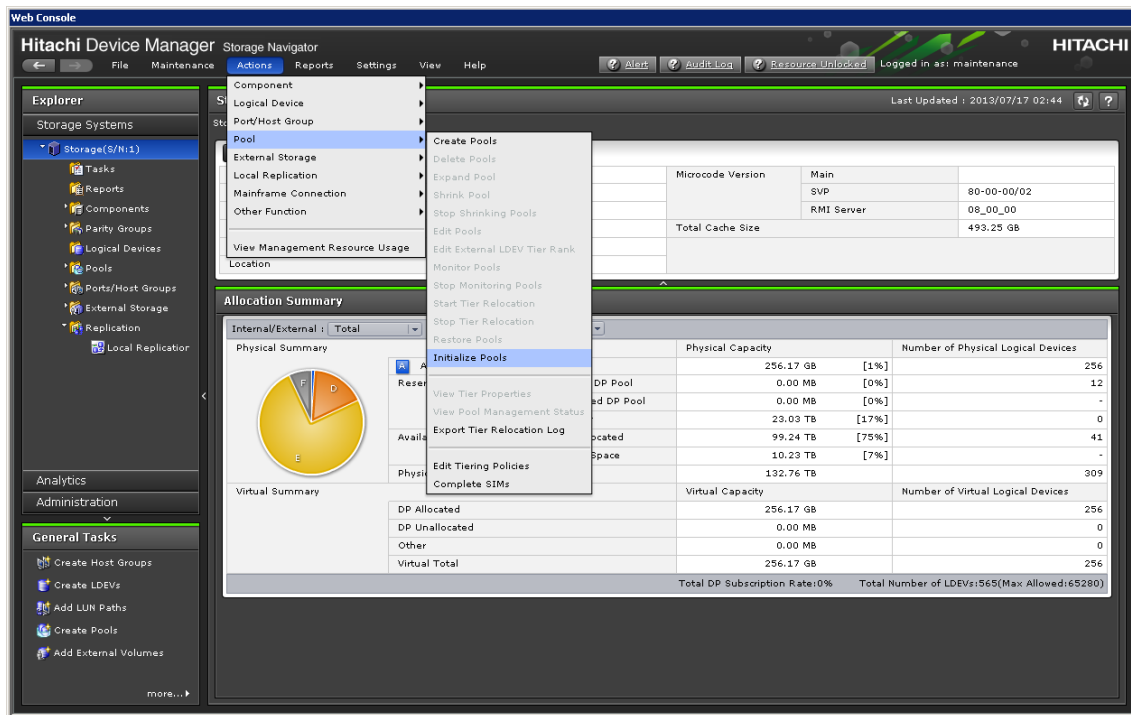
- (1) Select (CL) [Actions]-[Logical Device]-[Release Mainframe Command Devices] at the top of the main window.

NOTE1: Command devices for Business Continuity Manager are deleted by this operation. But when external volumes used by Universal Volume Manager are defined as command devices, they are not deleted.

NOTE2: To find the command device for Business Continuity Manager, use the 'Logical Device' window. For more information about the 'Logical Device' window, see "Hitachi Command Suite User Guide" or "Hitachi Virtual Storage Platform G1000 Mainframe System Administrator Guide".

NOTE3: By this operation, when Command devices for Business Continuity Manager are deleted, confirm that Shared memory which is required in TrueCopy for Mainframe has been installed.

3.6 Dynamic Provisioning/Dynamic Tiering/Dynamic Provisioning for Mainframe/Dynamic Tiering for Mainframe



(1) Initialize Pools

Select (CL) [Actions]-[Pool]-[Initialize Pools] at the top of the main window.

The Virtual Volumes of Dynamic Provisioning / Dynamic Tiering / Dynamic Provisioning for Mainframe / Dynamic Tiering for Mainframe (DP-VOL) is blockaded. And the pool of all Dynamic Provisioning / Dynamic Tiering / Dynamic Provisioning for Mainframe / Dynamic Tiering for Mainframe / Thin Image is blockaded.

Refer to the TROUBLE SHOOTING SECTION “13.9 Initialization Procedure for Pool” (TRBL13-110) for the Initialize procedure and notes.

To operate the ‘Initialize Pools’, an entry of a password is required. For the password, refer to the Technical Support Division.

NOTE1: The pool of all Dynamic Provisioning / Dynamic Tiering / Dynamic Provisioning for Mainframe / Dynamic Tiering for Mainframe / Thin Image is blockaded.

NOTE2: In the case [TrueCopy / Universal Replicator / ShadowImage / Volume Migration / XRC / FlashCopy (R) V2 / FlashCopy (R) SE] use virtual volumes of Dynamic Provisioning / Dynamic Tiering / Dynamic Provisioning for Mainframe / Dynamic Tiering for Mainframe, delete all [TrueCopy / Universal Replicator / ShadowImage / Volume Migration / XRC / FlashCopy (R) V2 / FlashCopy (R) SE] pairs that use the virtual volumes before performing Initialize.

After Initialize completes, create [TrueCopy / Universal Replicator / ShadowImage / Volume Migration / XRC / FlashCopy (R) V2 / FlashCopy (R) SE] pairs again.

During initialize, don't create [TrueCopy / Universal Replicator / ShadowImage / Volume Migration / XRC / FlashCopy (R) V2 / FlashCopy (R) SE] pairs with virtual volumes of Dynamic Provisioning / Dynamic Tiering / Dynamic Provisioning for Mainframe / Dynamic Tiering for Mainframe. In the case those pairs, initialize and paircreate operation may fail.

NOTE3: Delete all Thin Image pairs before performing Initialize.

After Initialize completes, create Thin Image pairs again.

During Initialize, don't create Thin Image pairs. In the case create Thin Image pairs, initialize and paircreate operation may fail.

NOTE4: Do not execute the maintenance of Dynamic Provisioning until the pool restores normally after executing Initialize.

NOTE5: Procedure to recover DP-VOL:

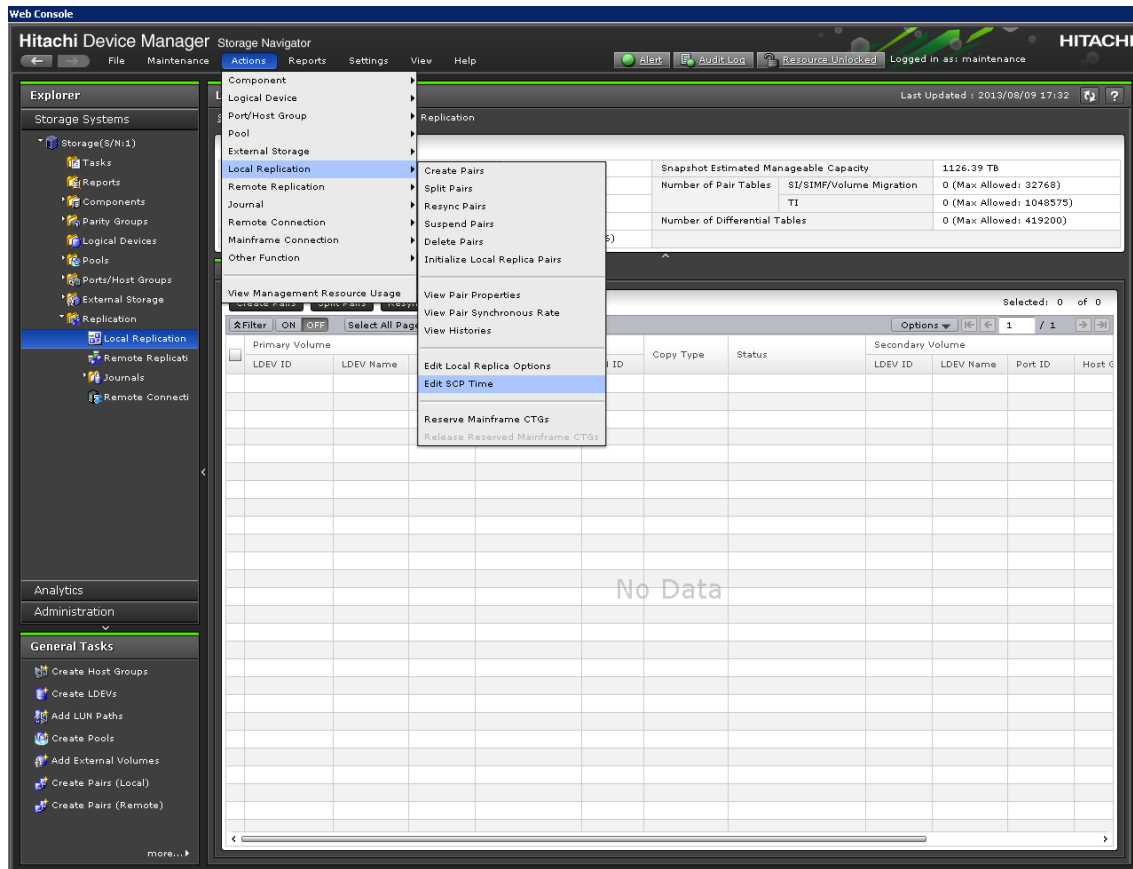
Please recover the pool of Dynamic Provisioning / Dynamic Tiering / Dynamic Provisioning for Mainframe / Dynamic Tiering for Mainframe referring to "Provisioning Guide for Open Systems" or "Provisioning Guide for Mainframe Systems".

DP-VOL recovers by recovering the pool of Dynamic Provisioning / Dynamic Tiering / Dynamic Provisioning for Mainframe / Dynamic Tiering for Mainframe.

NOTE6: Perform the operation only when it is directed by the Technical Support Division.

3.7 Change SCP Time

Select (CL) [Actions]-[Local Replication]-[Edit SCP Time] at the top of the main window to activate 'Edit SCP Time' window.



(1) Changing the SCP Time

- (a) In the 'Edit SCP Time' window, select (CL) all CUs to which the SCP Time exceeding 600 seconds is set, and select (CL) [Change SCP Time] button.
- (b) 'Change SCP Time' window will appear.
- (c) In the 'Change SCP Time' window, enter 120 seconds (default value) and select (CL) [OK] button.
- (d) Select (CL) [Finish] button on the 'Edit SCP Time' window.
- (e) In the 'Confirm' window, select (CL) [Apply] button.

4. IPv6 Setting

You can use Web Console and Storage Navigator (Remote Web Console in case of HP version) with IPv6.

Internet Protocol Version used for the connection of Storage Navigator switches depending on the network setting of the PC which operates the SVP and Storage Navigator. A list of the setting of the PC which operates the SVP and Storage Navigator and Internet Protocol Version used for the connection is shown below.

Table 4-1 List of Internet Protocol Version used for the Connection

Client \ SVP			Network Setting					
			IPv4	IPv6	IPv4	IPv6	IPv4	IPv6
			Enabled	Enabled	Enabled	Disabled	Disabled	Enabled
Network Setting	IPv4	Enabled	Connected by IPv4		Connected by IPv4		Connected by IPv6	
	IPv6	Enabled						
	IPv4	Enabled	Connected by IPv4		Connected by IPv4		Connection disabled	
	IPv6	Disabled						
	IPv4	Disabled	Connection disabled (*1)		Connection disabled		Connected by IPv6	
	IPv6	Enabled						

IPv4: Internet Protocol Version 4 (TCP/IPv4)

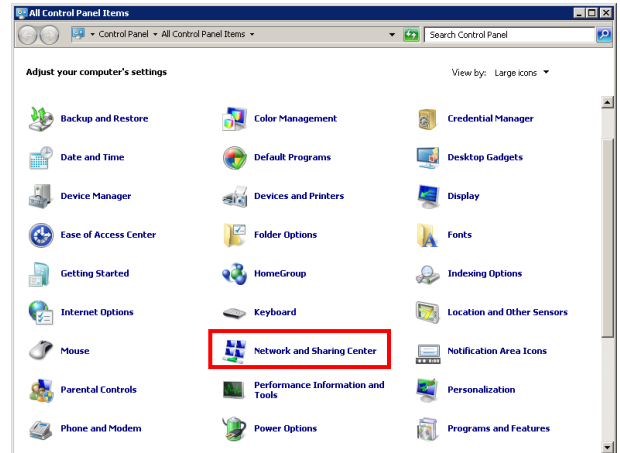
IPv6: Internet Protocol Version 6 (TCP/IPv6)

Client: PC which operates Storage Navigator (Remote Web Console in case of HP version)

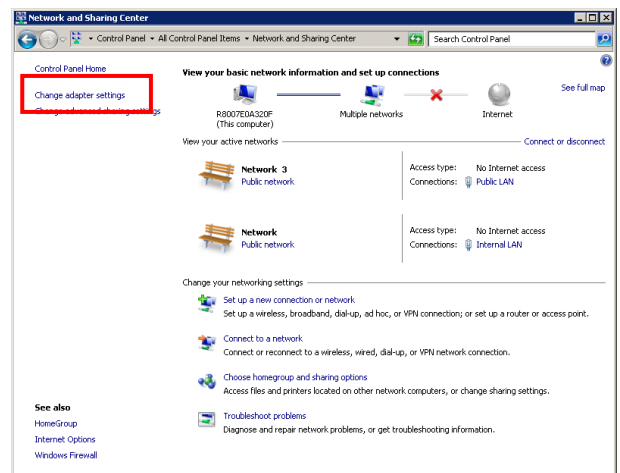
- *1: If you make only IPv6 enabled for the setting of the PC which operates Storage Navigator while keeping both IPv6 and IPv4 enabled for the setting of the SVP, you cannot use Storage Navigator. When communicating only with IPv6, set both PCs which operate the SVP and Storage Navigator as IPv6.

Perform the following when using Web Console only with IPv6.

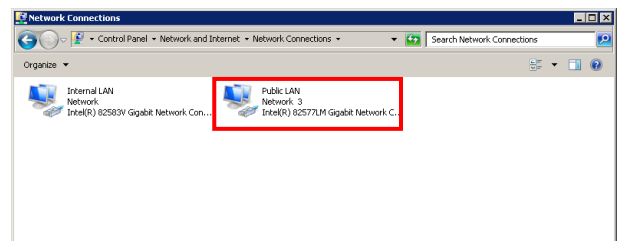
- (1) Launch the Network and Sharing Center
Select (CL) [Start]-[Control Panel] and launch (double-click) the “Network and Sharing Center”.



- (2) Launch the Network Connections
Select (CL) “Change adapter settings”.

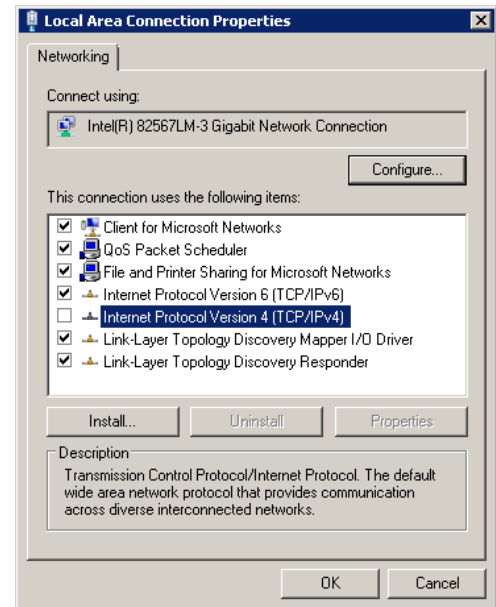


- (3) Open the Connection Properties window
Right-click on the icon of “Public LAN” and select “Properties” from the displayed popup menu. Select (CL) “Continue” when the confirmation window is displayed.



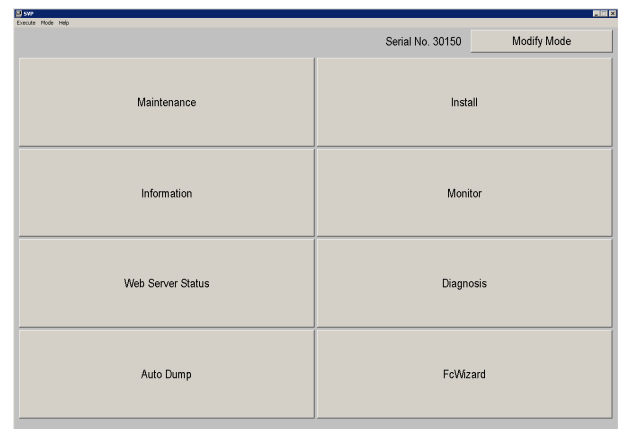
(4) Set properties

When the property is displayed, uncheck the checkbox of “Internet Protocol Version 4 (TCP/IPv4)” in the list. Select (CL) [OK] and close the window.



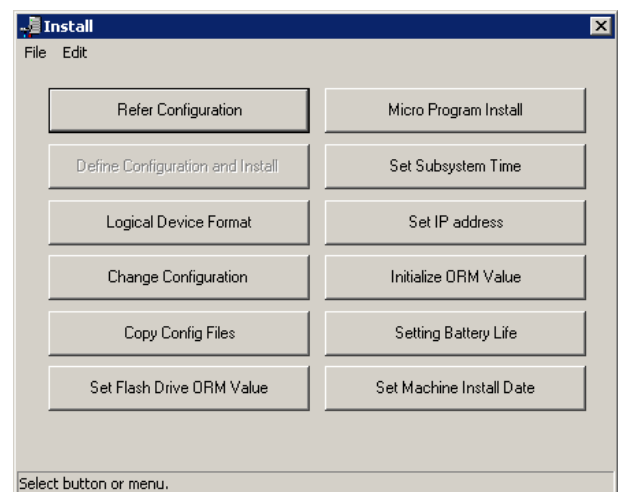
(5) Operate SVP window

Change to [Modify Mode].



(6) Open Install window

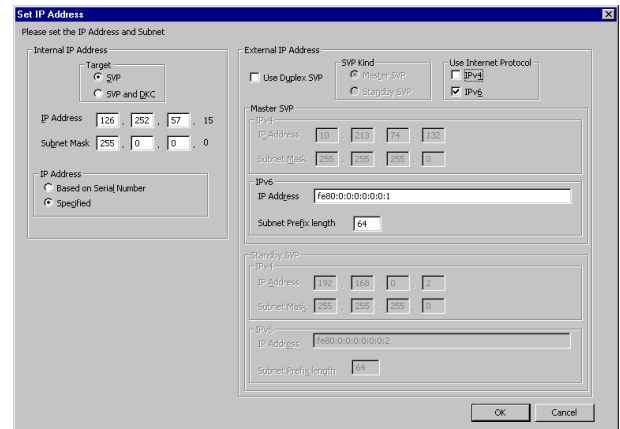
Select (CL) [Install] from [SVP].



(7) Set SVP properties

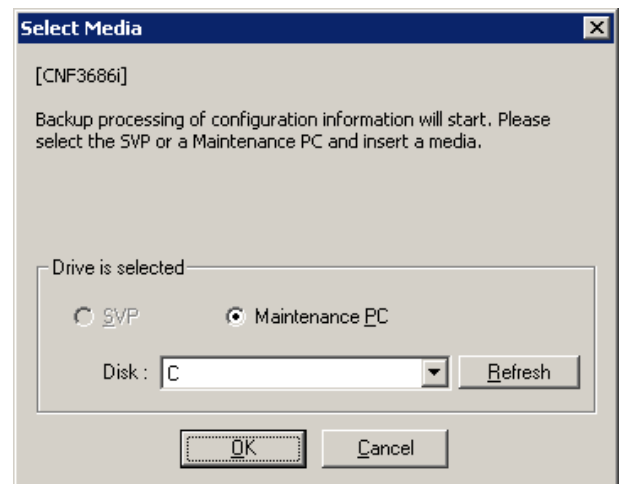
Select (CL) [Set IP address] from the ‘Install’ window.

Uncheck the checkbox of IPv4 of “Use Internet Protocol” and select (CL) [OK].



(8) Insert the Config media

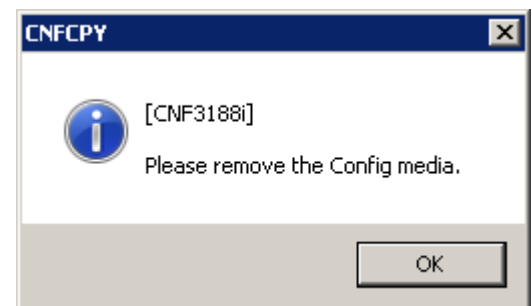
Insert the medium containing the configuration information in the specified location and select (CL) [OK].



(9) Take out the Config media

When the copying of the configuration information is completed, a message, “Please remove the Config media.” is displayed.

Take out the medium containing the configuration information and select (CL) [OK].



WEB04-50

(10) Make sure of the restart of the SVP

Select (CL) [OK].

The SVP is disconnected from the maintenance PC.

After waiting for about five minutes, reconnect the SVP that has been replaced to the maintenance PC.



5. Procedure of server software uninstallation/installation

Please accord to the following procedures if you reinstall Apache, Tomcat, or Flash player.

NOTE: If install individually Apache, Tomcat, and Flash Player, Exit the all work.

5.1 Apache

5.1.1 Uninstallation of Apache

Before reinstalling Apache, you need to uninstall the Apache already installed in the SVP. Uninstall the Apache in the following procedure.

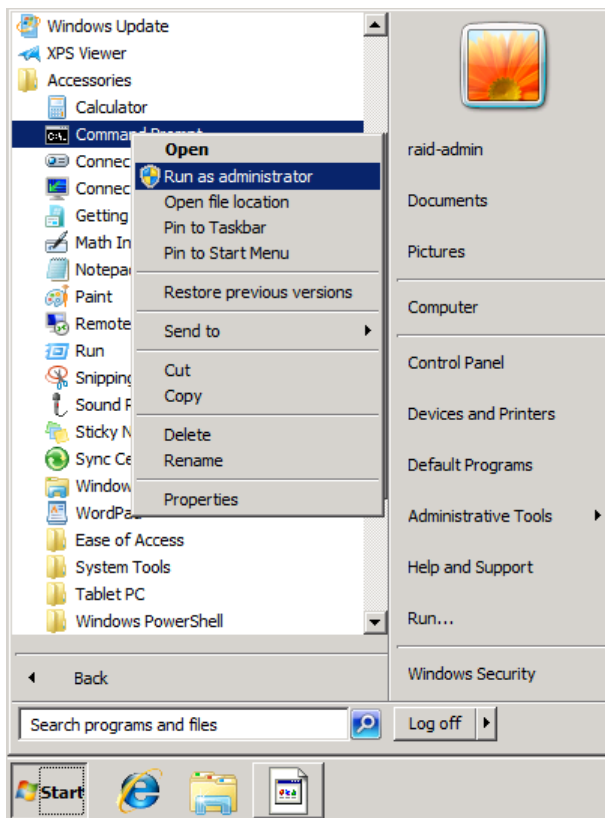
NOTE: After uninstallation of Apache is finished, you must next complete the procedure in “5.1.2 Installation of Apache” before modifying any other software product on the SVP. If you shutdown or logout the SVP before completion of “5.1.2 Installation of Apache”, SVP failure may occur. If a shutdown request message is displayed by the software product during uninstall/install, please disregard.

- (1) Mount the OSS media

Insert the OSS media (the second media) to the CD-ROM drive in the Maintenance PC.

- (2) Launch the Command Prompt as administrator

Select (CL) [Start]-[All Programs]-[Accessories], and launch the Command Prompt with ‘Run as administrator’ in right-click menu.



(3) Launch the uninstallation batch

Enter “\\tsclient\<drive letter>\JavaAp\Apache\ApacheUnInst.bat” into the Command Prompt, and press the Enter key.

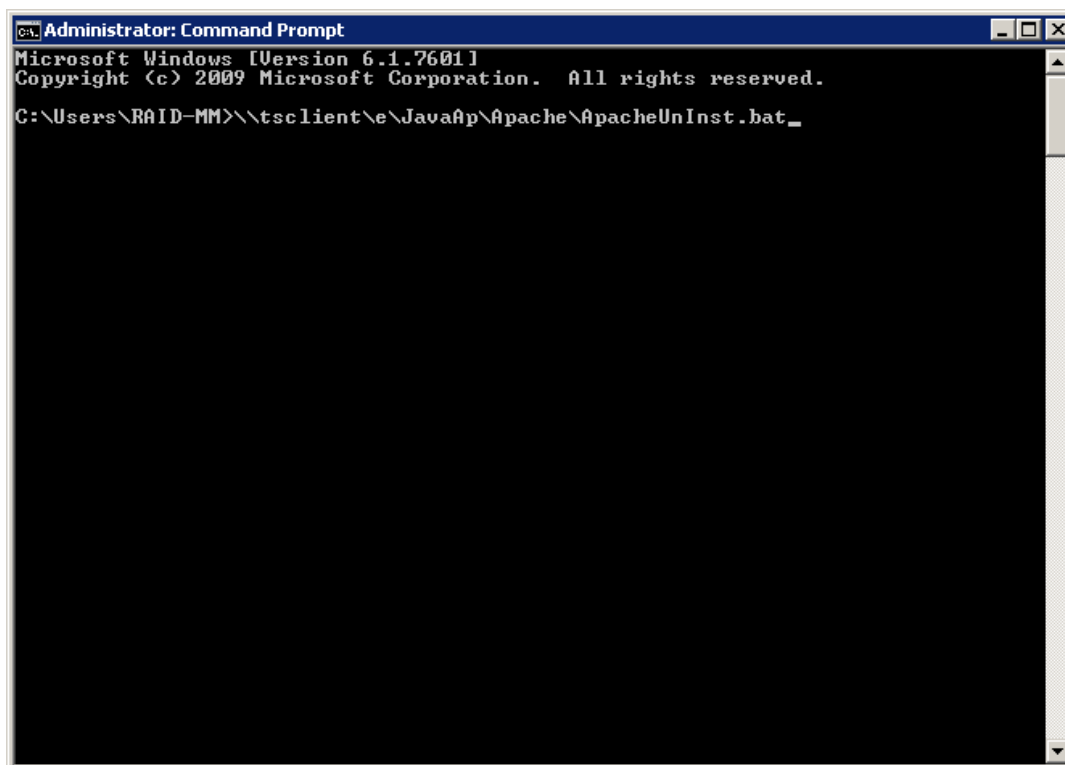
At the end of this process, the Command Prompt will close automatically.

NOTE: The input value is the form of

“\\tsclient\<drive letter>\JavaAp\Apache\ApacheUnInst.bat”.

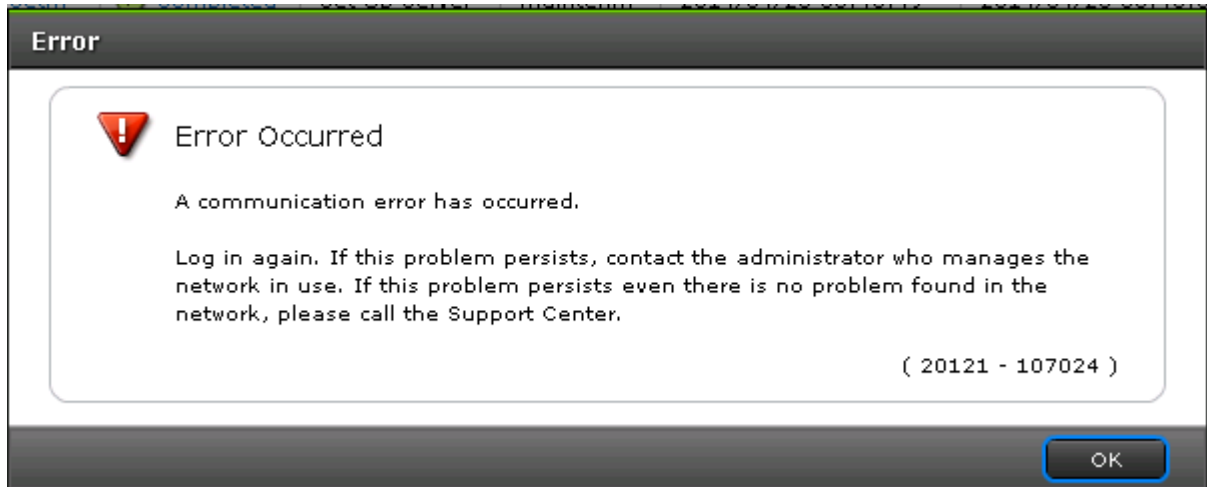
A drive letter is made the drive which inserted the OSS media.

The above is a case where the CD-ROM drive is assigned a drive letter E.



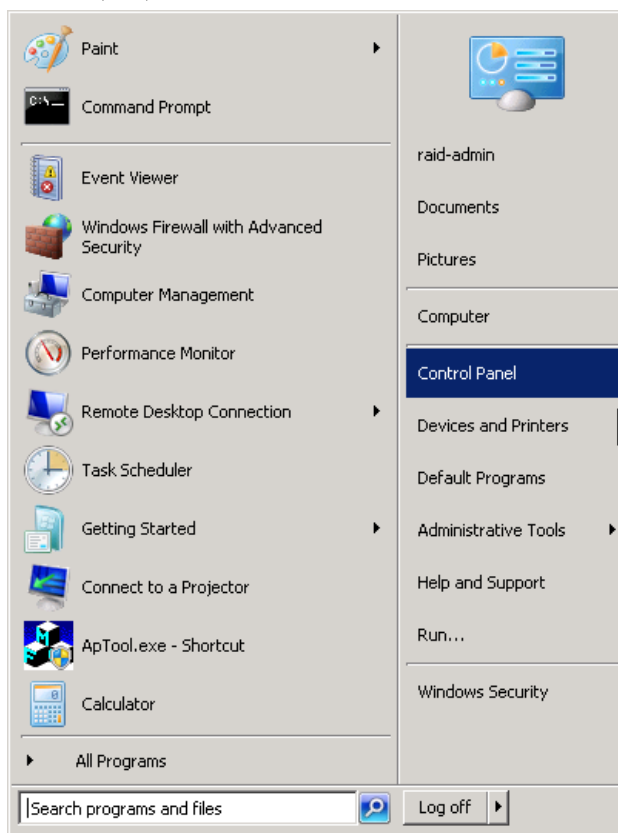
NOTE: After uninstallation of Apache is finished, you must next complete the procedure in “5.1.2 Installation of Apache” before modifying any other software product on the SVP. If you shutdown or logout the SVP before completion of “5.1.2 Installation of Apache”, SVP failure may occur. If a shutdown request message is displayed by the software product during uninstall/install, please disregard.

If following error message is displayed on the Web Console,
Not select (CL) [OK] button. And follow the steps below.

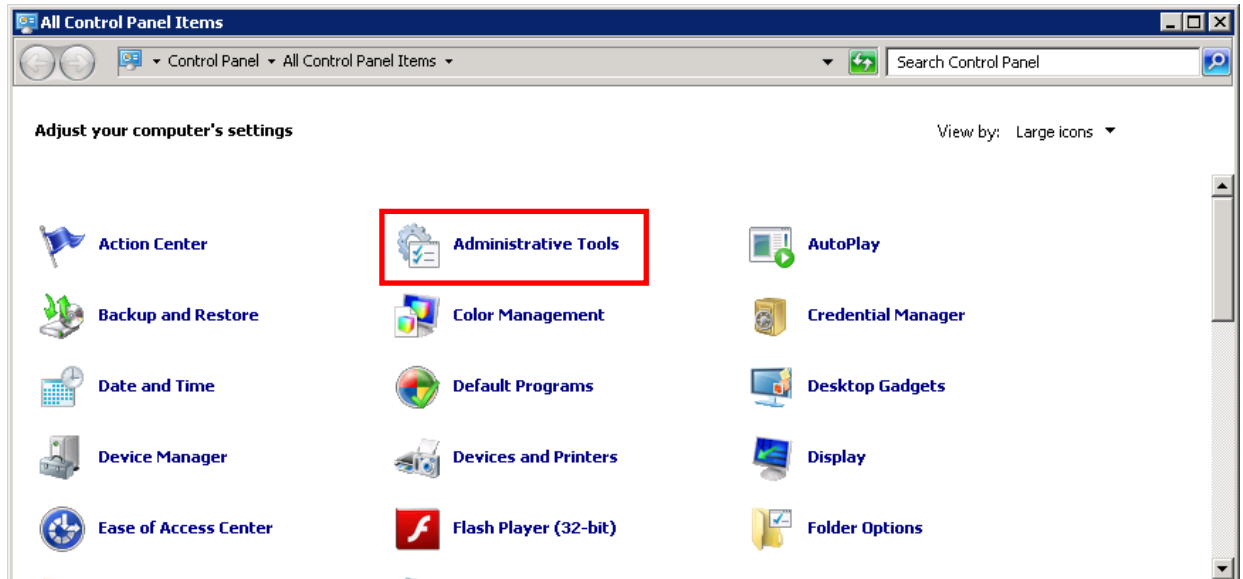


NOTE: It is all right when you press the [OK] button. And follow the steps below.

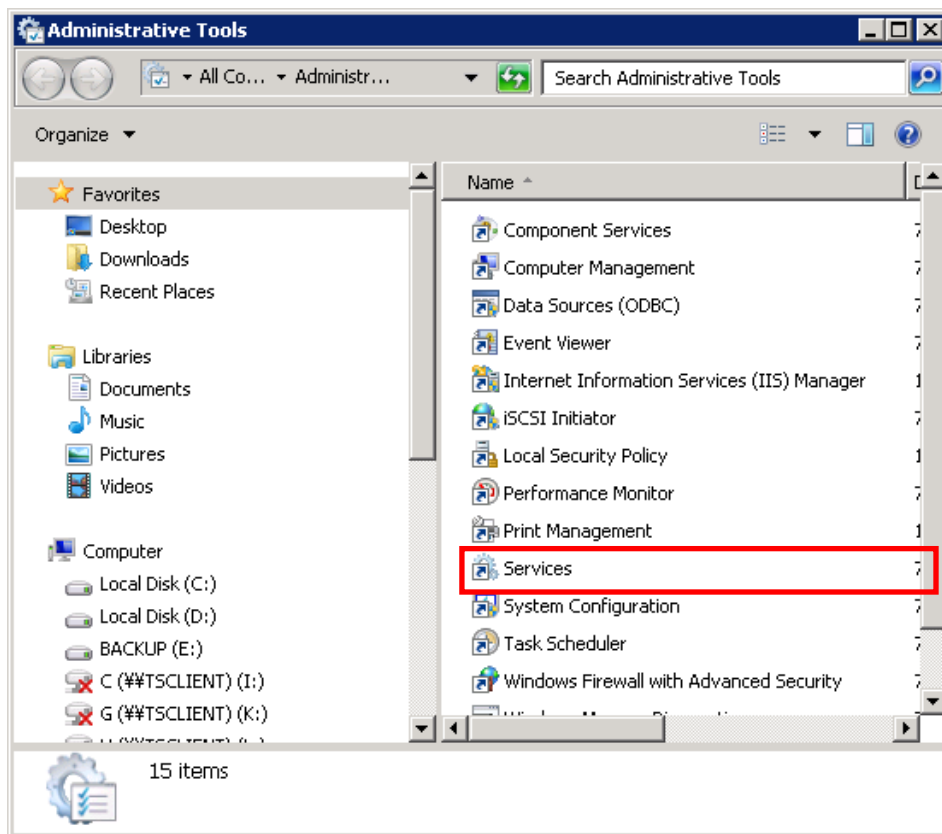
- (4) Open “Control Panel”
Select (CL) [Start]-[Control Panel].



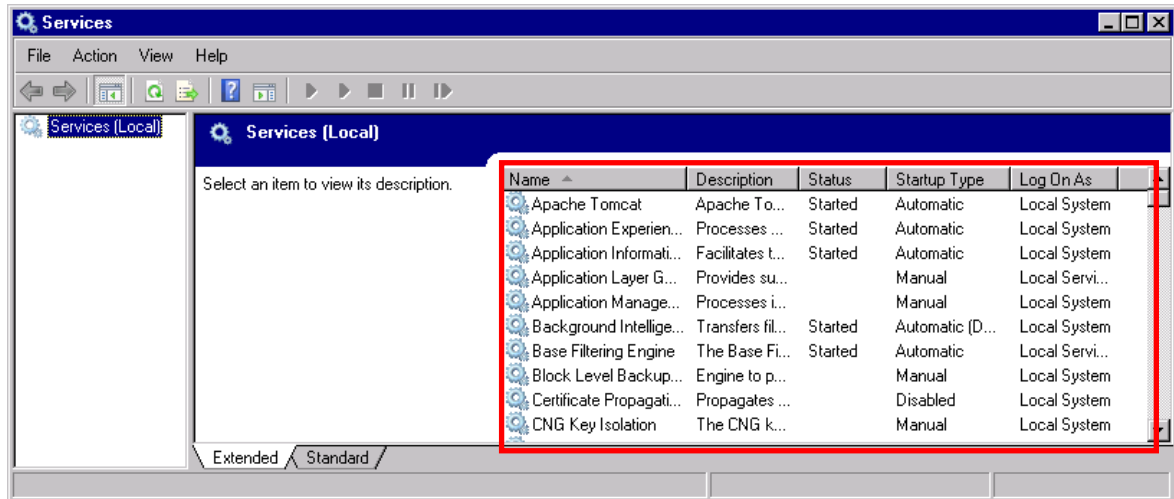
- (5) Open “Administrative Tools”
Select (CL) [Administrative Tools].



- (6) Open “Services”
Select (DC) [Services].



- (7) Confirm that Apache is uninstalled
Confirm that there is no Apache2.4 in “Name” list.



NOTE: If Apache2.4 is still installed, try again from installation procedure “5.1.1 Uninstallation of Apache”.

- (8) Unmount the OSS media
Remove the OSS media (the second media) from the CD-ROM drive in the Console PC.

5.1.2 Installation of Apache

When installing Apache, follow the procedure shown below. Be sure to check that the uninstallation processing is completed before installing it.

Precondition:

- Prepare OSS media version 80-01-00/xx or later.
- SVP version 80-01-01/00 or later is required.
- Apache needs to be uninstalled.

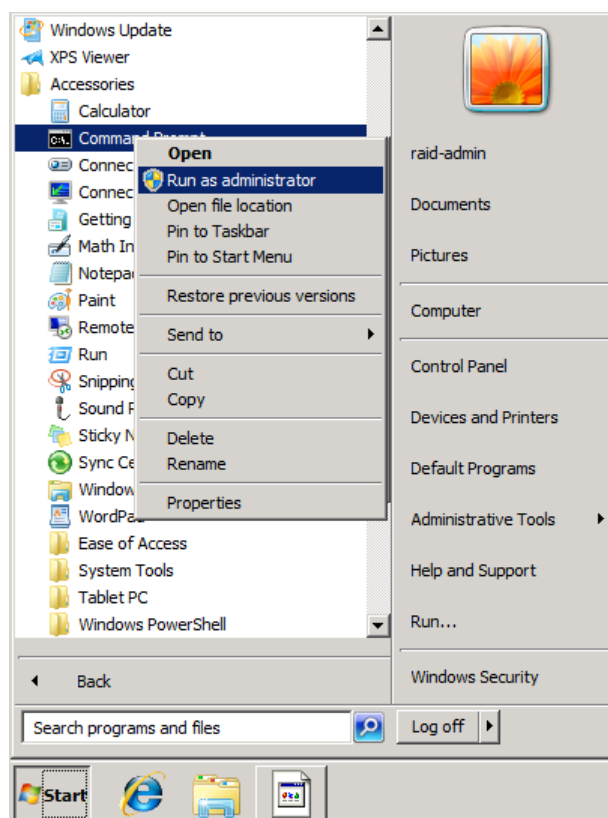
NOTICE: Uninstall the apache if apache was installed with OSS media version less than 80-01-00/xx.
And install apache with OSS media version 80-01-00/xx or later.

(1) Mount the OSS media

Insert the OSS media (the second media) to the CD-ROM drive in the Maintenance PC.

(2) Launch the Command Prompt as administrator

Select (CL) [Start]-[All Programs]-[Accessories], and launch the Command Prompt with 'Run as administrator' in right-click menu.



(3) Launch the installation batch

Enter “\\tsclient\e\JavaAp\Apache\ApacheInst_StandAlone.bat” into the Command Prompt, and press the Enter key.

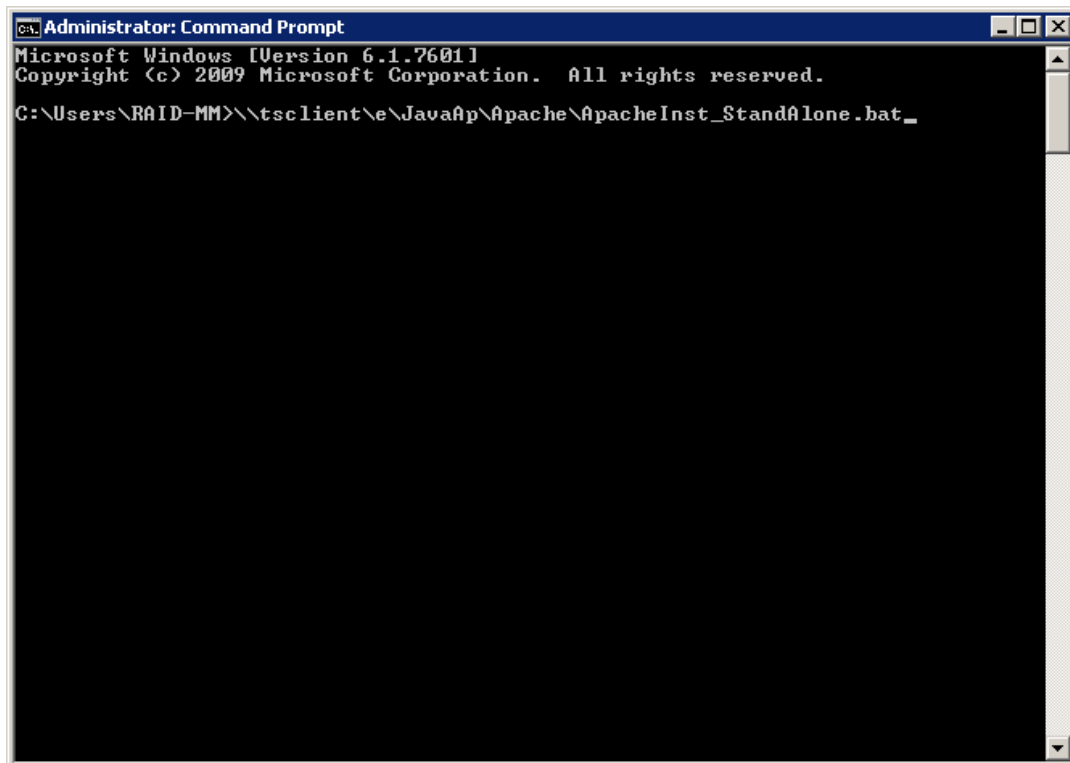
At the end of this process, the Command Prompt will close automatically.

NOTE: The input value is the form of

“\\tsclient\<drive letter>\JavaAp\Apache\ApacheInst_StandAlone.bat”.

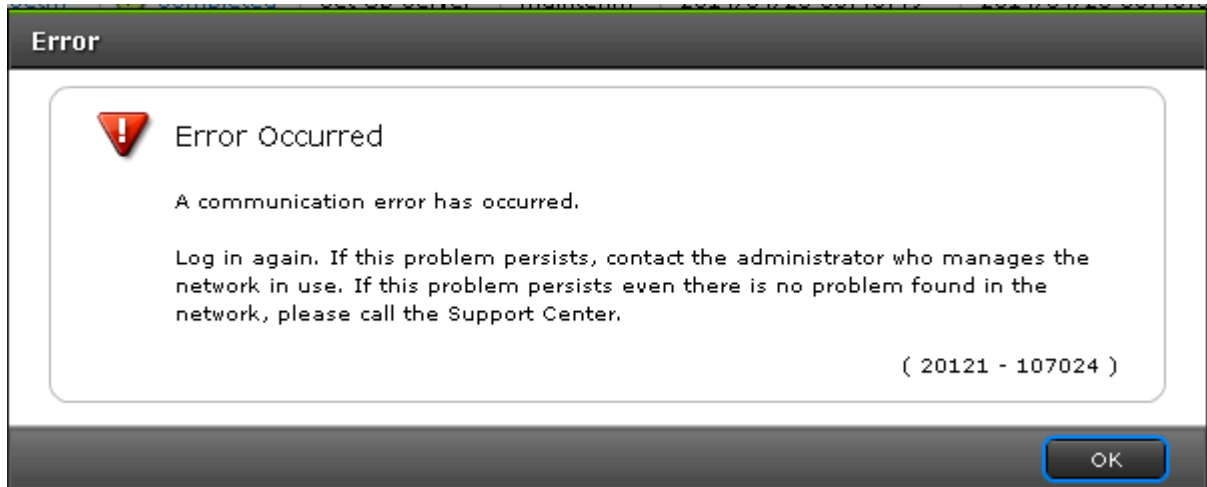
A drive letter is made the drive which inserted the OSS media.

The above is a case where the CD-ROM drive is assigned a drive letter E.



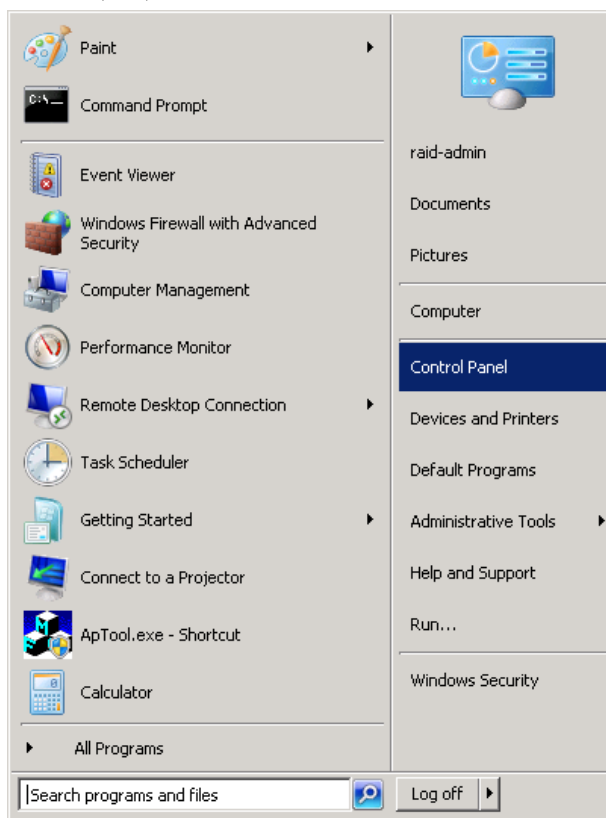
The things of default are set in the key creation for SSL communication and the certificate file. When you install an SSL communication key and a certificate file responding to the customer's request, see “Hitachi Command Suite User Guide” or “Hitachi Virtual Storage Platform G1000 Mainframe System Administrator Guide”.

If following error message is displayed on the Web Console,
Not select (CL) [OK] button. And follow the steps below.

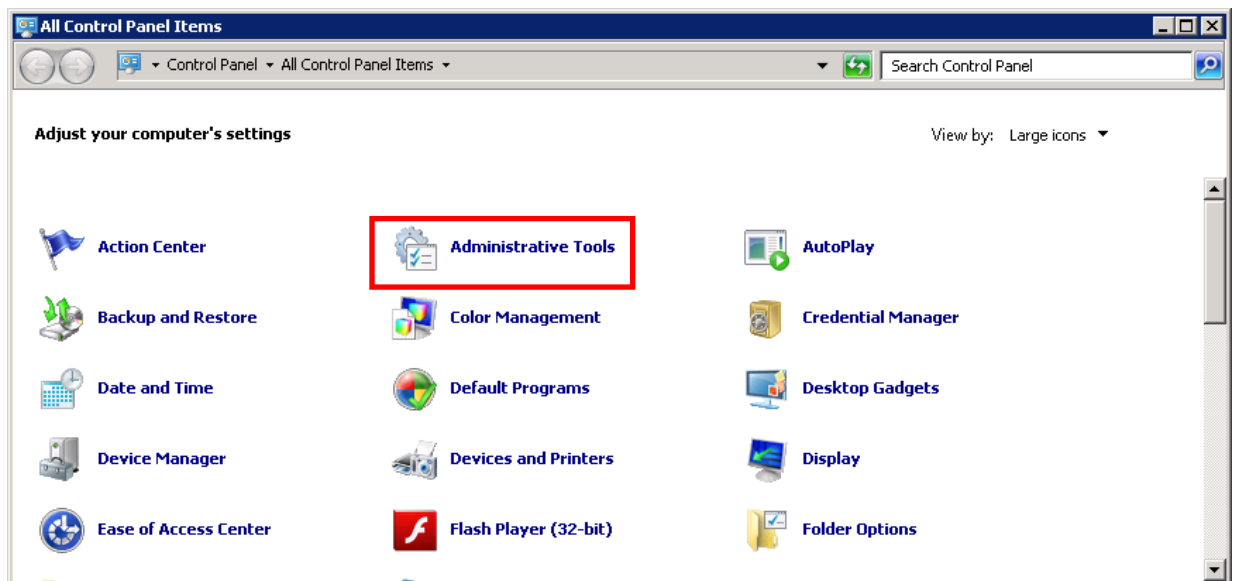


NOTE: It is all right when you press the [OK] button. And follow the steps below.

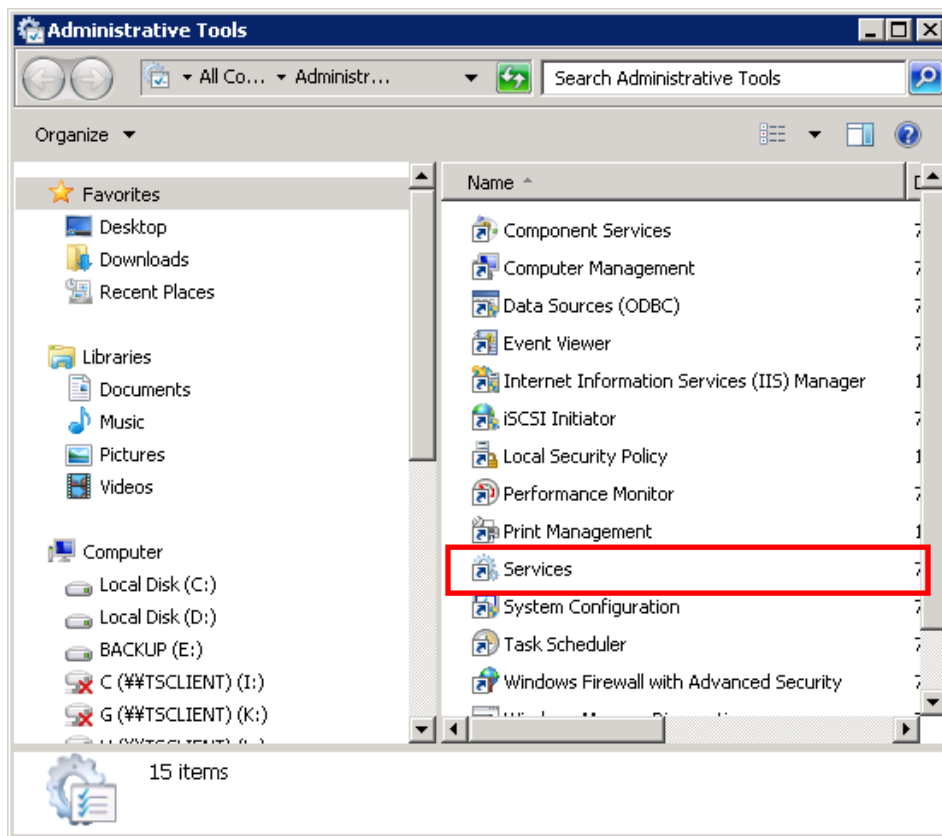
- (4) Open “Control Panel”
Select (CL) [Start]-[Control Panel].



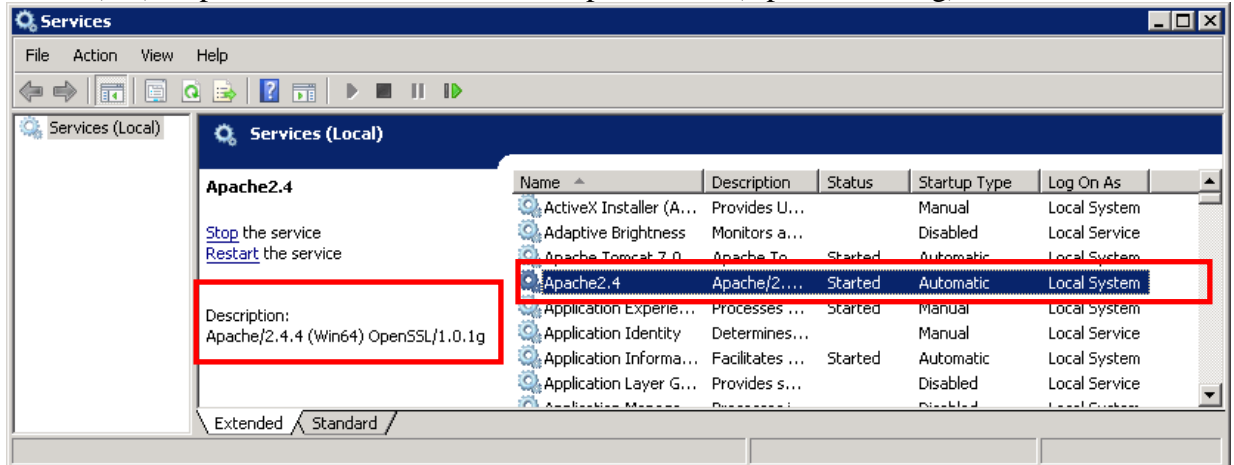
- (5) Open “Administrative Tools”
Select (CL) [Administrative Tools].



- (6) Open “Services”
Select (DC) [Services].



- (7) Select (CL) “Apache2.4” and Confirm that Apache2.4.4 (OpenSSL1.0.1g) is installed

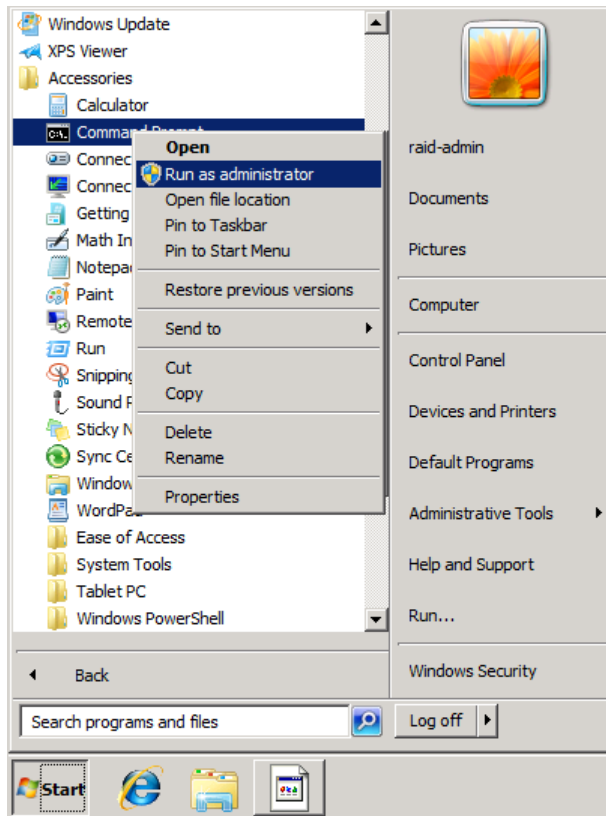


- NOTE:
- If there is no "Apache2.4" in "Name" list, try again from the installation procedure (1). If you shutdown or logout the SVP before completion of "Installation of Apache", SVP failure may occur. If a shutdown request message is displayed by the software product during uninstall/install, please disregard.
 - In addition, if the installed version is different from the version you expect, please reboot the SVP. And try again from installation procedure "5.1.1 Uninstallation of Apache".

- (8) Unmount the OSS media

Remove the OSS media (the second media) from the CD-ROM drive in the Console PC.

- (9) Launch the Command Prompt as administrator
Select (CL) [Start]-[All Programs]-[Accessories], and launch the Command Prompt with 'Run as administrator' in right-click menu.



- (10) Reboot the SVP
Enter “shutdown /r /t 0” into the Command Prompt, and press the Enter key.
The SVP will be rebooted.

NOTE: When the SVP High Reliability Kit is installed, you need to install it for the standby SVP in the same procedure.
About the switching SVP, refer to Post-Procedure “2.17. SVP Switching” in the “SVP SECTION”.

5.2 Tomcat

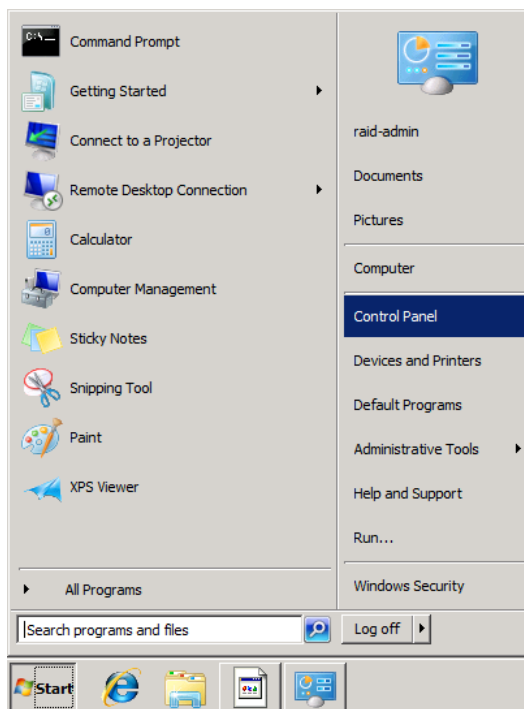
5.2.1 Uninstallation of Tomcat

Before reinstalling Tomcat, you need to uninstall the Tomcat already installed in the SVP. Uninstall the Tomcat in the following procedure.

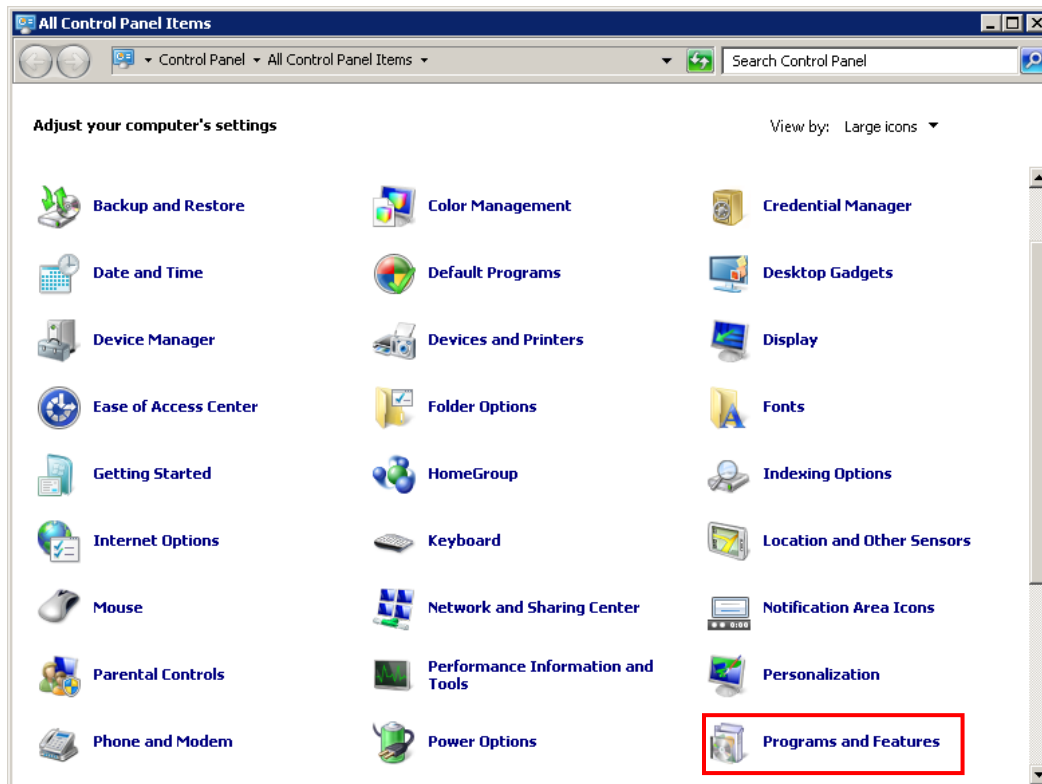
NOTE: After uninstallation of Tomcat is finished, you must next complete the procedure in “5.2.2 Installation of Tomcat” before modifying any other software product on the SVP. If you shutdown or logout the SVP before completion of “5.2.2 Installation of Tomcat”, SVP failure may occur. If a shutdown request message is displayed by the software product during uninstall/install, please disregard.

(1) Launch the Control Panel

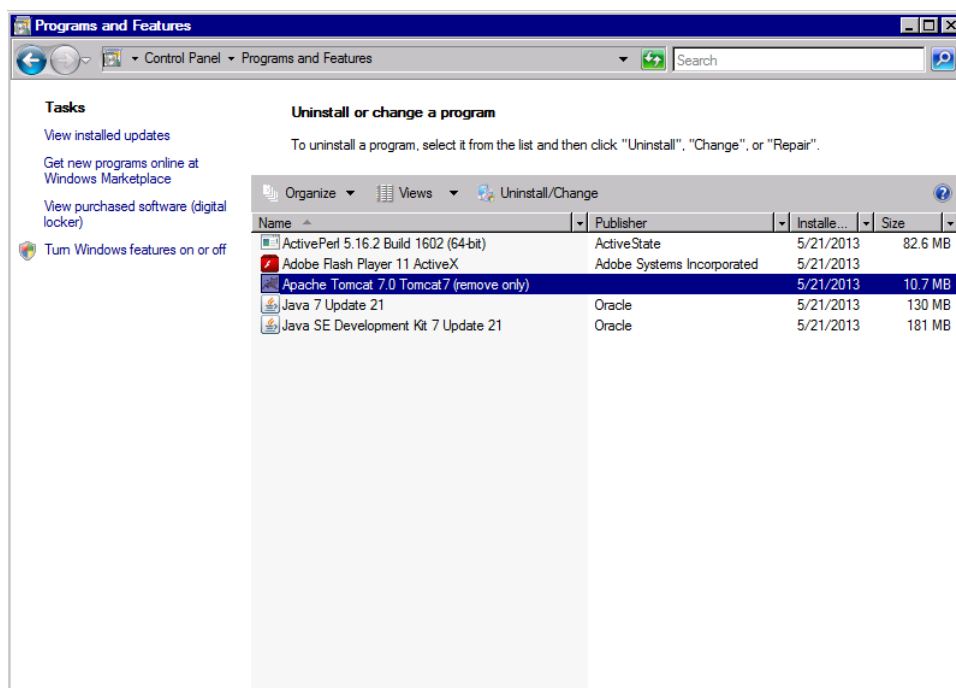
Select (CL) [Start]-[Control Panel].



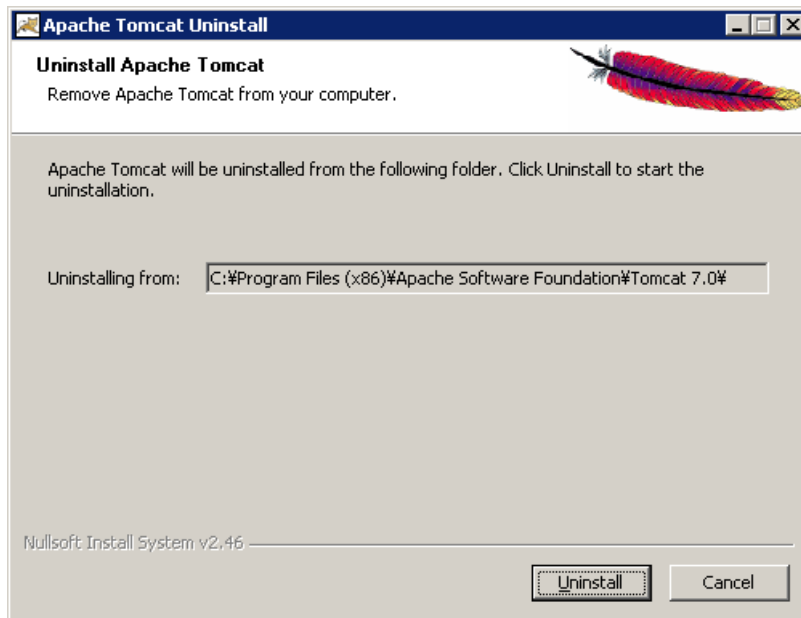
- (2) Launch the Program and Features
Select (DC) [Programs and Features].



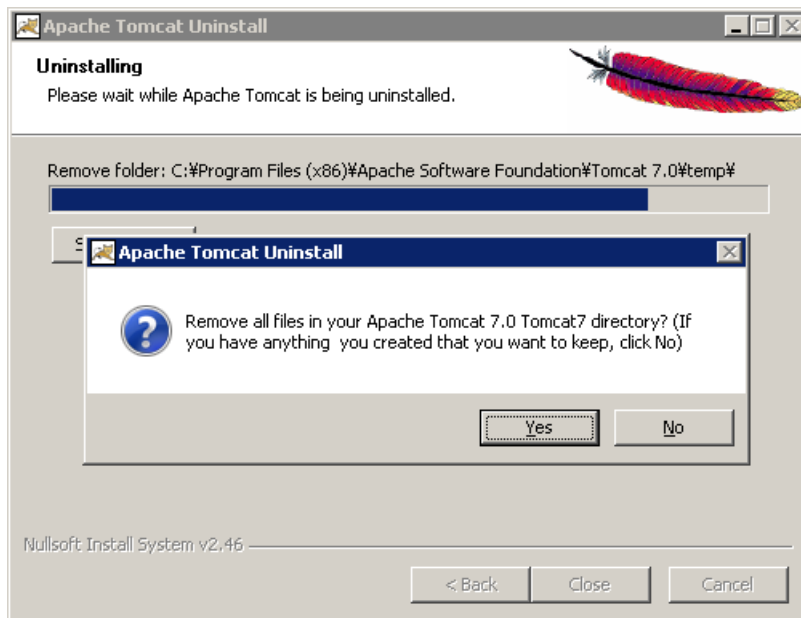
- (3) Run uninstallation
Select (CL) [Apache Tomcat 7.0 Tomcat7 (remove only)], and select (CL) [Uninstall/Change] button.



- (4) Proceed to the next
Select (CL) [Uninstall] button.

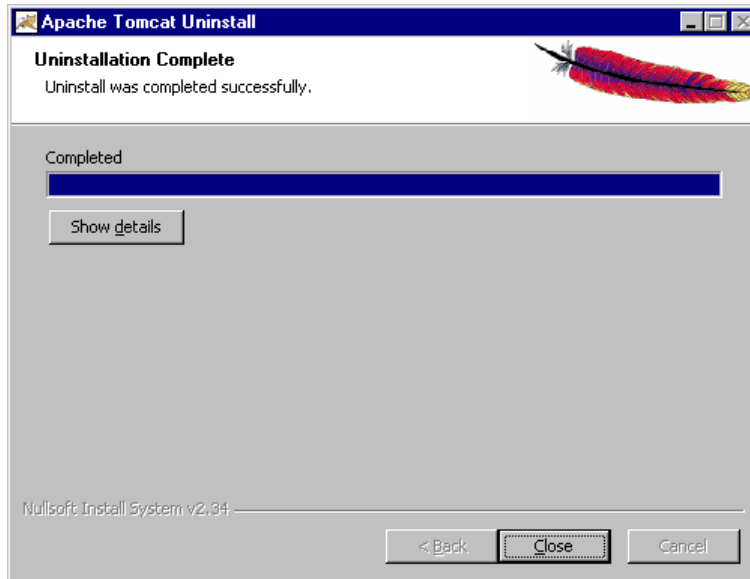


- (5) Make sure the message
If following message box is displayed, select (CL) [Yes].

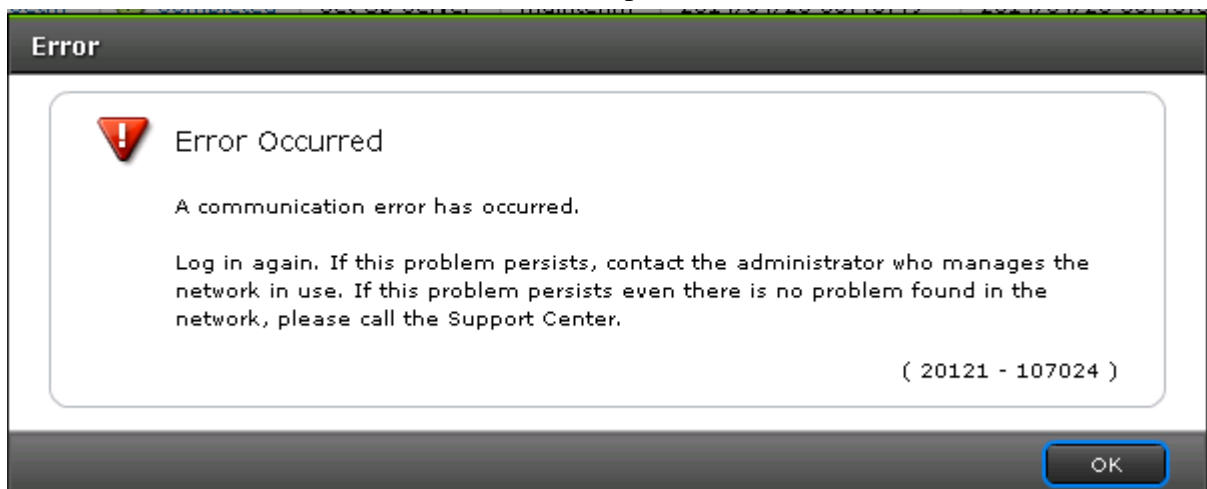


(6) Complete uninstallation

When “Uninstallation Complete” dialogue box is displayed, select (CL) [Close] button.



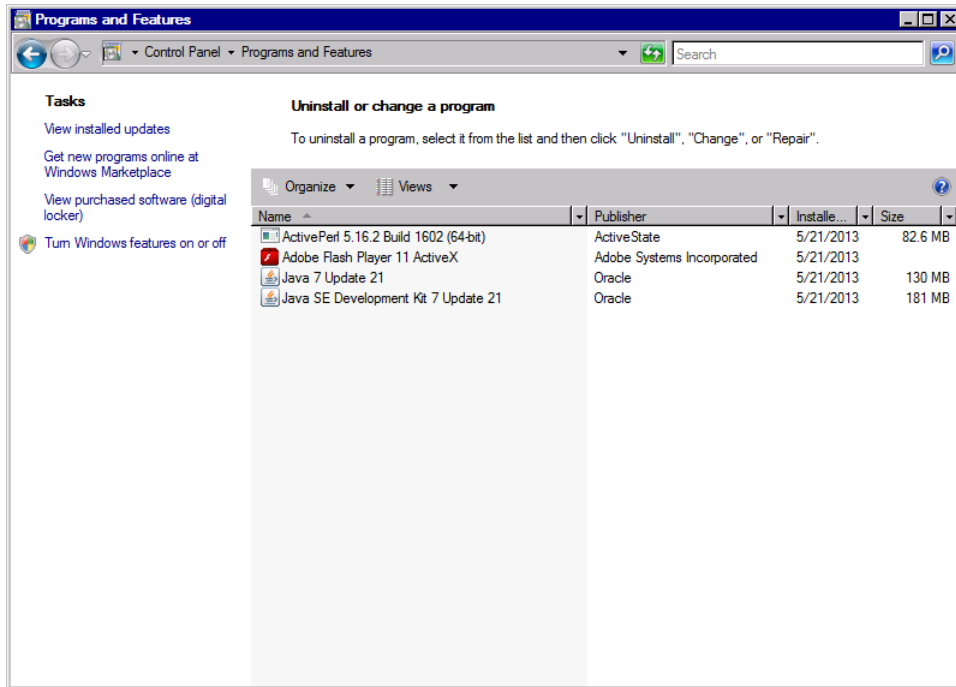
If following error message is displayed on the Web Console, Not select (CL) [OK] button. And follow the steps below.



NOTE: It is all right when you press the [OK] button. And follow the steps below.

- (7) Check the result and close the window

[Apache Tomcat 7.0 Tomcat7 (remove only)] in 'Programs and Features' window was deleted.
Close the window.



NOTE: After uninstallation of Tomcat is finished, you must next complete the procedure in “5.2.2 Installation of Tomcat” before modifying any other software product on the SVP. If you shutdown or logout the SVP before completion of “5.2.2 Installation of Tomcat”, SVP failure may occur. If a shutdown request message is displayed by the software product during uninstall/install, please disregard.

5.2.2 Installation of Tomcat

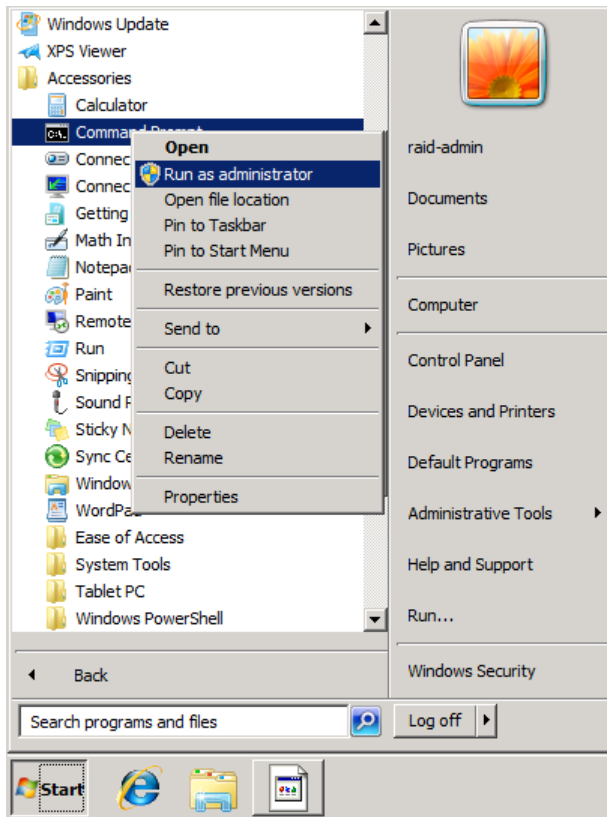
When installing Tomcat, follow the procedure shown below. Be sure to check that the uninstallation processing is completed before installing it.

(1) Mount the OSS media

Insert the OSS media (the second media) to the CD-ROM drive in the Maintenance PC.

(2) Launch the Command Prompt as administrator

Select (CL) [Start]-[All Programs]-[Accessories], and launch the Command Prompt with 'Run as administrator' in right-click menu.



(3) Launch the installation batch

Enter “\\tsclient\e\JavaAp\install_Win7_64_Tomcat.bat” into the Command Prompt, and press the Enter key.

NOTE: The input value is the form of

“\\tsclient<drive letter>\JavaAp\install_Win7_64_Tomcat.bat”.

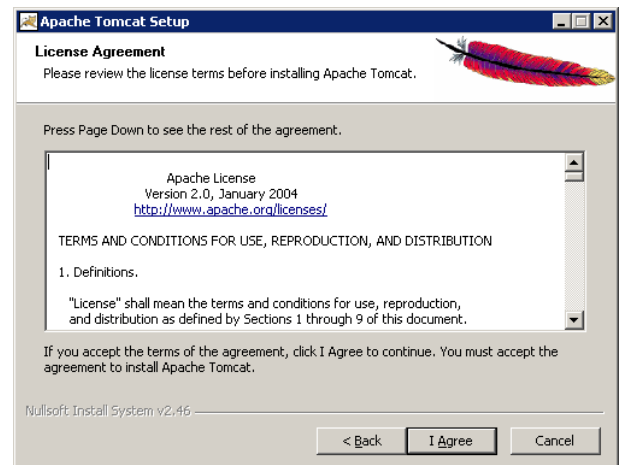
A drive letter is made the drive which inserted the OSS media.

The above is a case where the CD-ROM drive is assigned a drive letter E.

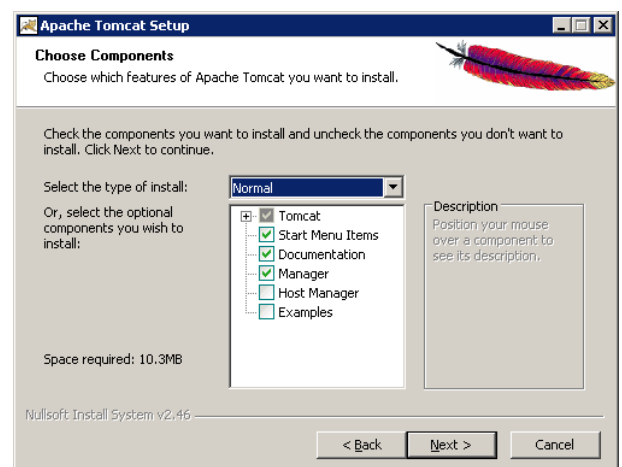
- (4) Proceed to the next
Select (CL) [Next>].



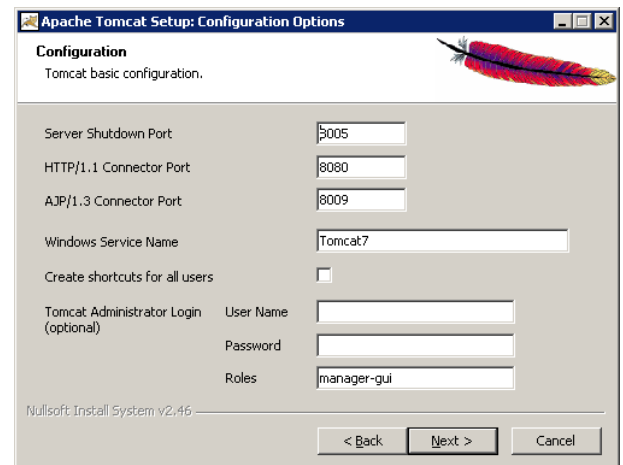
- (5) Proceed to the next
Select (CL) [I Agree].



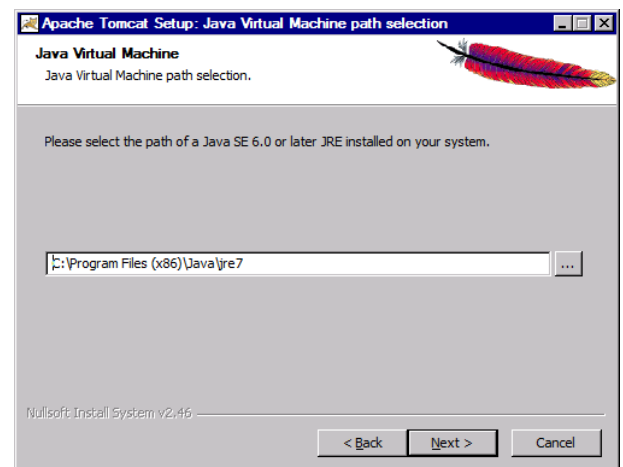
- (6) Proceed to the Next
Select (CL) [Next>].



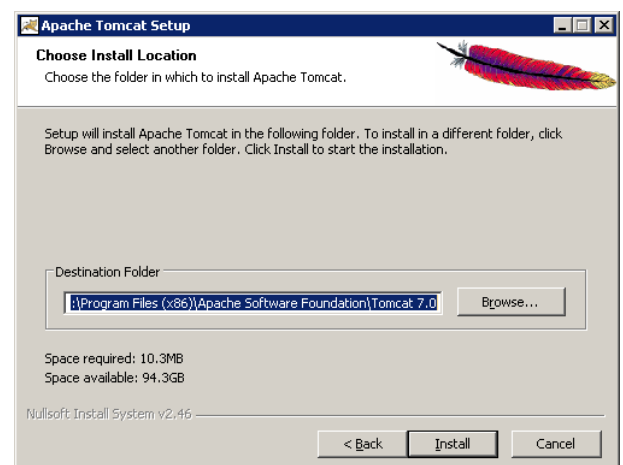
- (7) Proceed to the next
Select (CL) [Next>].



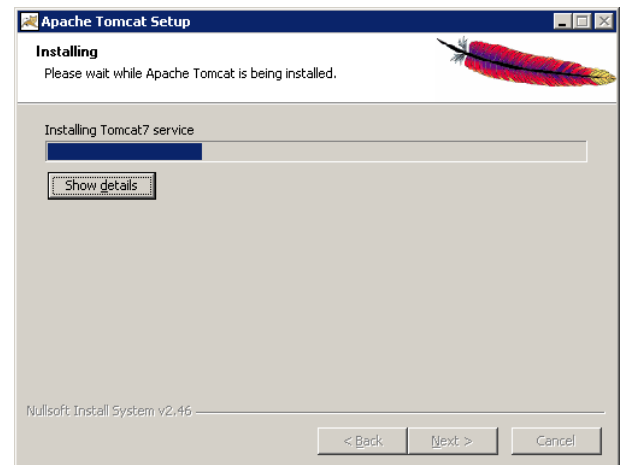
- (8) Proceed to the next
Select (CL) [Next>].



- (9) Proceed to the Next
Select (CL) [Install].

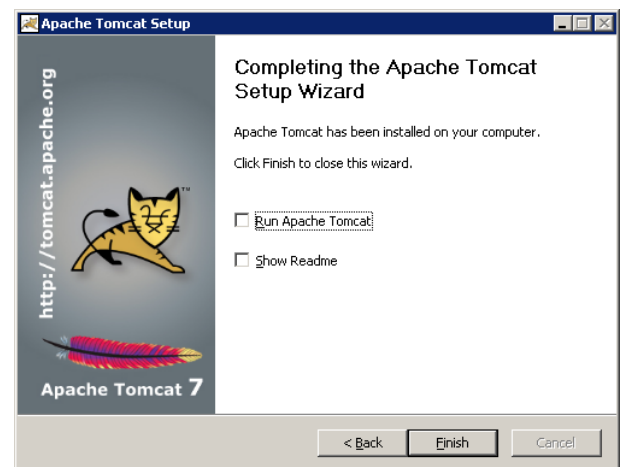


(10) Wait while installing

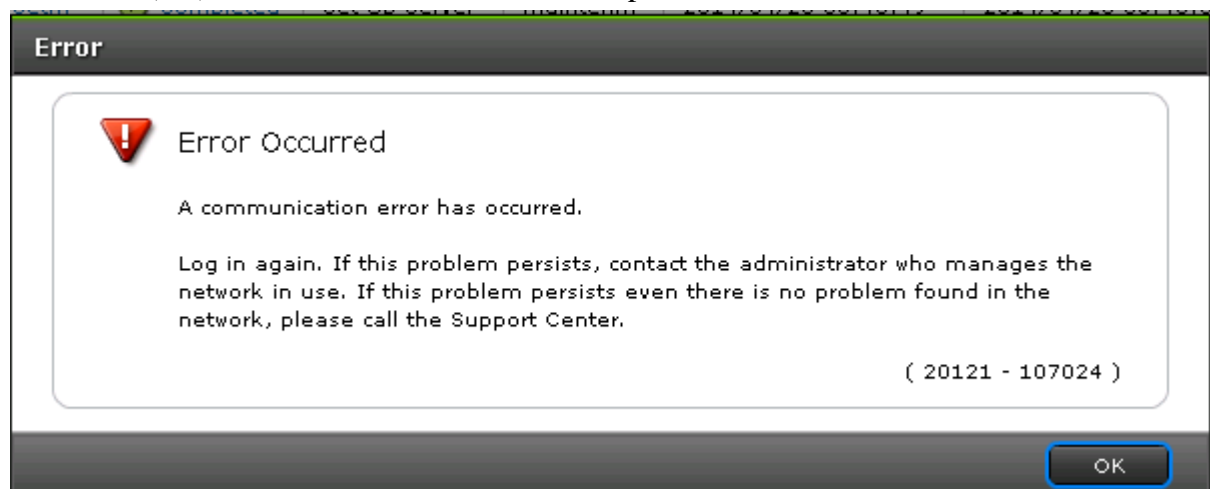


(11) Finishing installation

Uncheck all the checkboxes, and select (CL) [Finish].



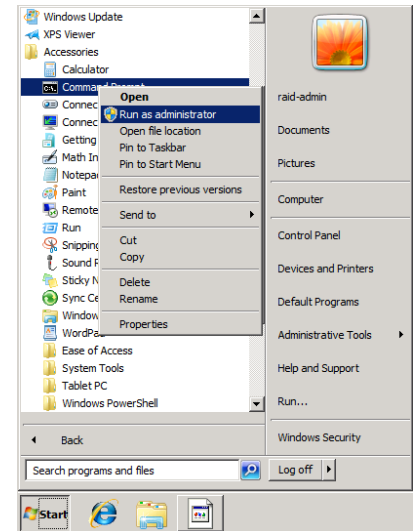
If following error message is displayed on the Web Console,
Not select (CL) [OK] button. And follow the steps below.



NOTE: It is all right when you press the [OK] button. And follow the steps below.

(12) Launch the Command Prompt as administrator

Select (CL) [Start]-[All Programs]-[Accessories], and launch the Command Prompt with 'Run as administrator' in right-click menu.



(13) Reboot the SVP

Enter "shutdown /r /t 0" into the Command Prompt, and press the Enter key.
The SVP will be rebooted.

NOTE: When the SVP High Reliability Kit is installed, you need to install it for the standby SVP in the same procedure.

About the switching SVP, refer to Post-Procedure "2.17. SVP Switching" in the "SVP SECTION".

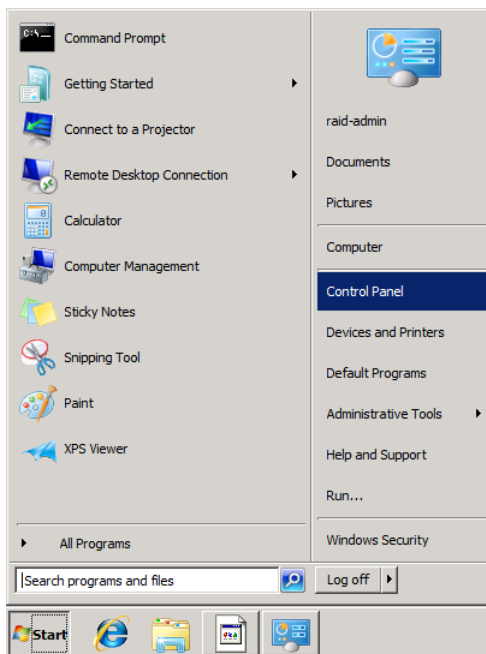
5.3 Flash Player

5.3.1 Uninstallation of Flash Player

Before reinstalling Flash Player, you need to uninstall the Flash Player already installed in the SVP. Uninstall the Flash Player in the following procedure.

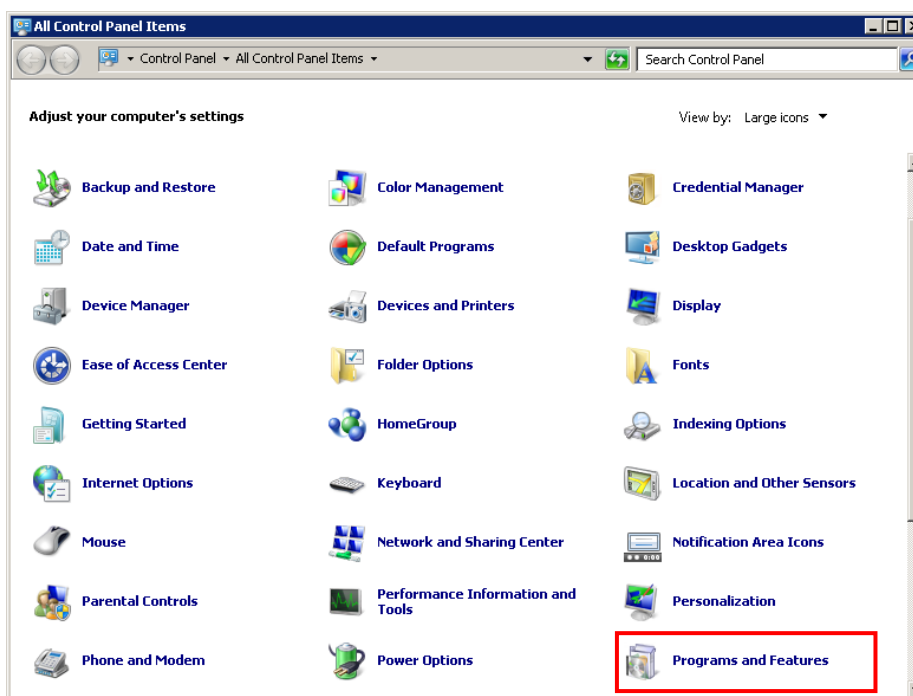
(1) Launch the Control Panel

Select (CL) [Start]-[Control Panel].



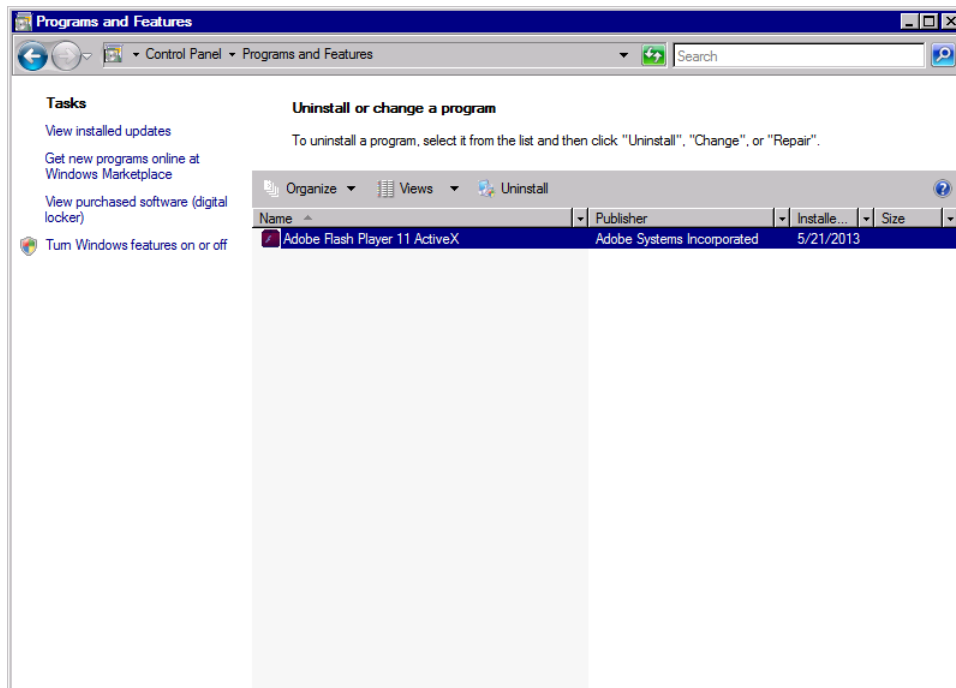
(2) Launch the Program and Features

Select (DC) [Programs and Features].



(3) Run uninstallation

Select (CL) [Adobe Flash Player 11 ActiveX], and select (CL) [Uninstall].



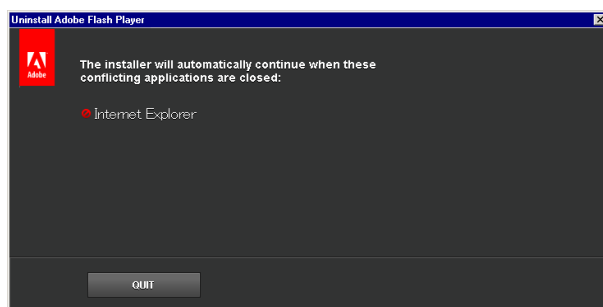
(4) Starting uninstallation

Select (CL) [UNINSTALL].



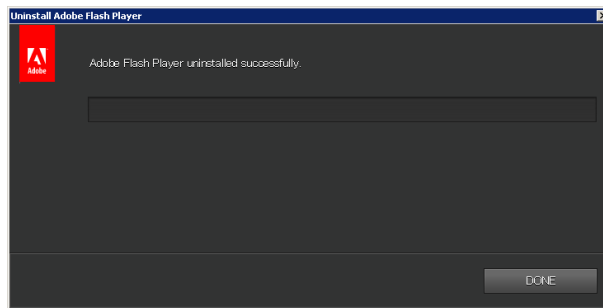
(5) Finishing application

If some applications were using Flash Player, the application name is displayed. Please finish the applications.



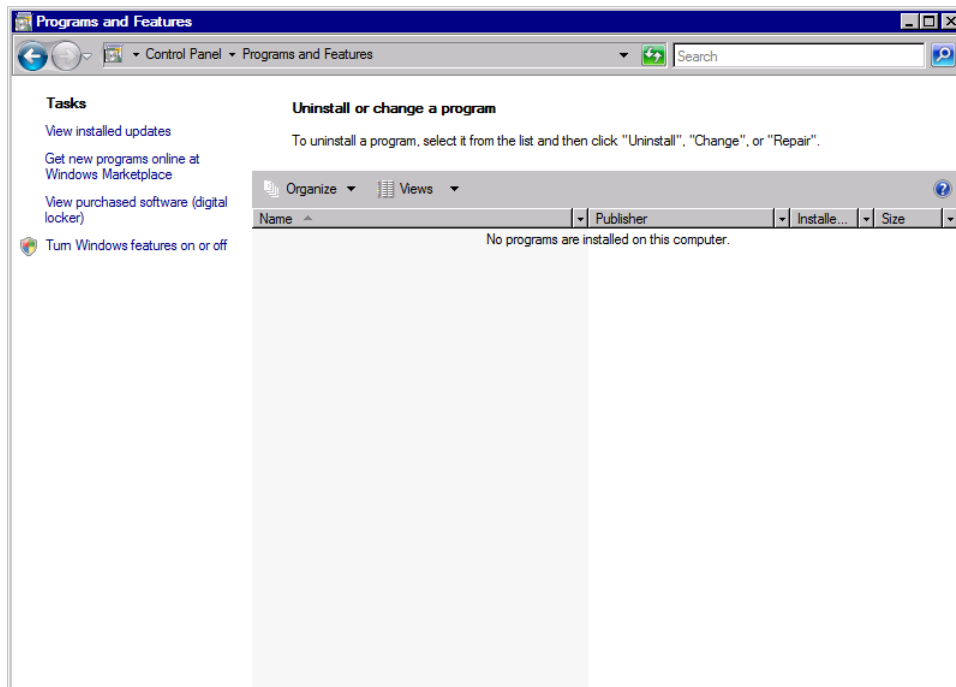
(6) Finishing uninstallation

Select (CL) [DONE].



(7) Check the result and close the window

[Adobe Flash Player 11 ActiveX] in 'Programs and Features' window was deleted.
Close the window.



5.3.2 Installation of Flash Player

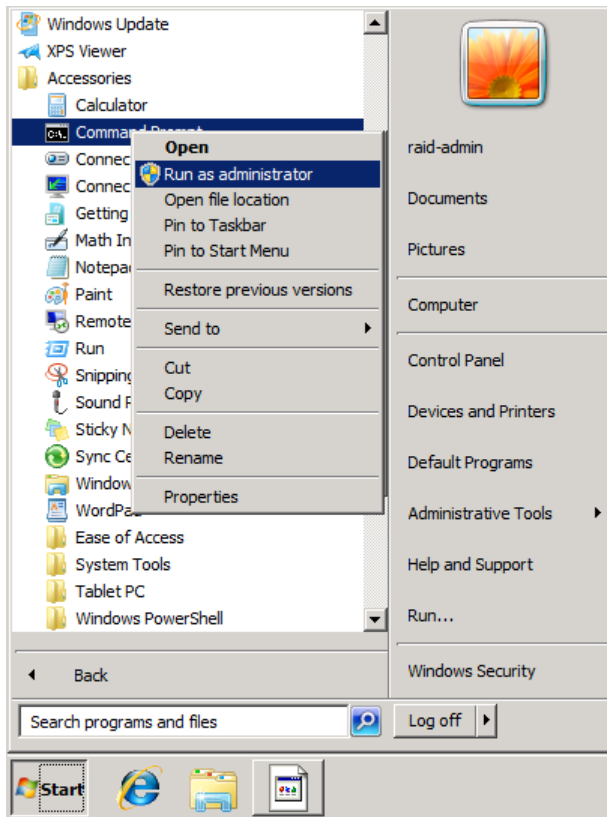
When installing Flash Player, follow the procedure shown below. Be sure to check that the uninstallation processing is completed before installing it.

(1) Mount the OSS media

Insert the OSS media (the second media) to the CD-ROM drive in the Maintenance PC.

(2) Launch the Command Prompt as administrator

Select (CL) [Start]-[All Programs]-[Accessories], and launch the Command Prompt with 'Run as administrator' in right-click menu.



(3) Launch the installation batch

Enter “\\tsclient\e\JavaAp\install_Win7_64_Flash.bat” into the Command Prompt, and press the Enter key.

NOTE: The input value is the form of

“\\tsclient<drive letter>\JavaAp\install_Win7_64_Flash.bat”.

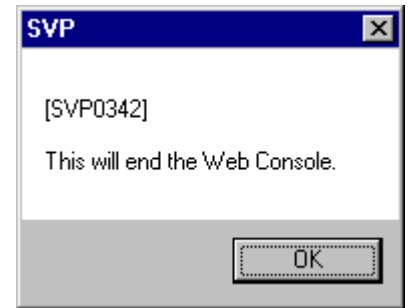
A drive letter is made the drive which inserted the OSS media.

The above is a case where the CD-ROM drive is assigned a drive letter E.

(4) Finishing Web Console

If running Web Console, “This will end the Web Console.” message is appeared.

Select (CL) [OK].



(5) Starting installation

Select (CL) [I have read and agree to the terms of the Flash Player License Agreement.], and select (CL) [INSTALL].



(6) Finishing installation

Select (CL) [Never check for updates (not recommended)].

Select (CL) [DONE].



NOTE: When the SVP High Reliability Kit is installed, you need to install it for the standby SVP in the same procedure.

About the switching SVP, refer to Post-Procedure “2.17. SVP Switching” in the “SVP SECTION”.

6. Before using the Alert setting/FTP transfer function

The setting of the Syslog/FTP server is required to use the Alert setting/FTP transfer function. Ask the customer to set the address of the Syslog/FTP server.

For details, refer to the chapter on the setting of the audit log in “Hitachi Audit Log User Guide”.