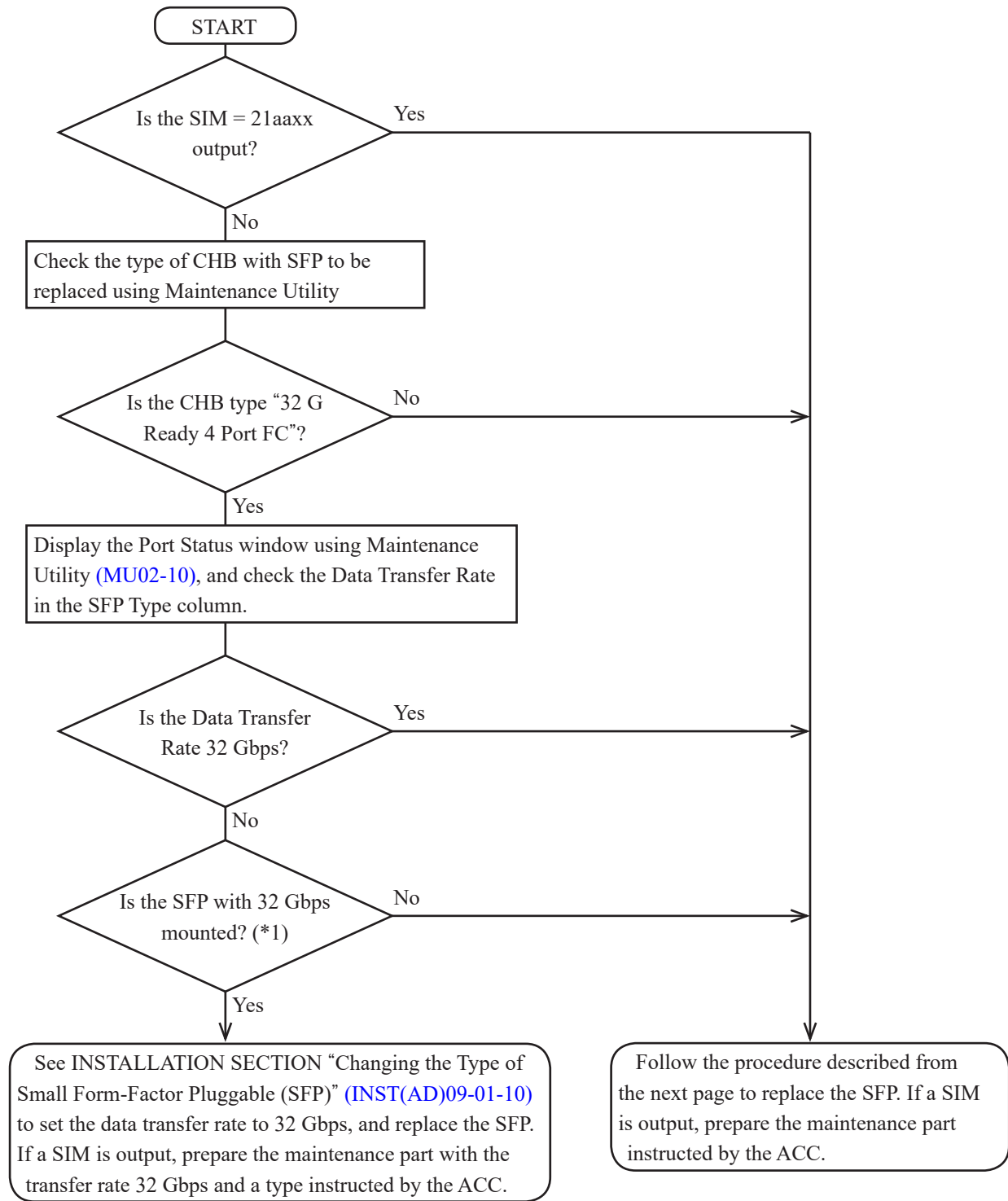


[SFP REPLACEMENT PROCESSING - RSFP]

If the SFP is replaced with the one for the 32G Ready 4Port FC CHB, the replacement might need to be performed using the procedure, see “Changing the Type of Small Form-Factor Pluggable (SFP)” ([INST\(AD\)09-01-10](#)) in INSTALLATION SECTION. Follow the flowchart below to check which replacement procedure to perform.



*1: Check the record at the time of delivery, or remove the SFP and check the appearance.
See ([INST\(AD\)09-01-70](#)).

1. Replacing a Small Form-Factor Pluggable (SFP)

NOTICE: Before starting, confirm that the path connected to the port in which the SFP to be replaced is installed is offline. The other paths need not to be offline.

1. Connecting the Maintenance PC

Connect the Maintenance PC to the SSVP, and then log in to the SVP.

- “Attachment/Removal Procedure of Maintenance PC” ([INST\(IN\)13-02-10](#))
- “Connection to the SVP” ([SVP01-30](#))

2. Starting the SVP window

From the menu of Web Console, click [Maintenance Components] - [Maintenance Other Components].

3. Changing the operation mode

Change the mode to [View Mode].

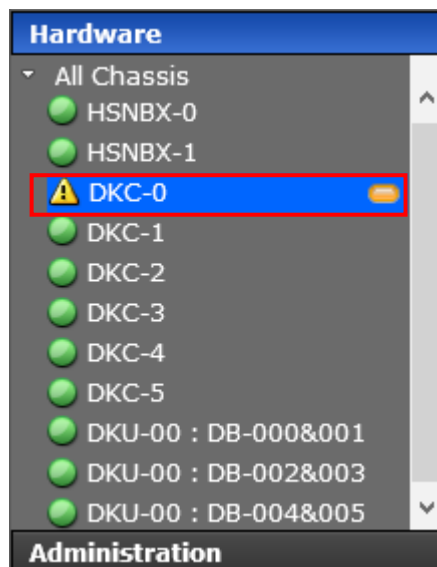
4. Starting Maintenance Utility

In the SVP window, click [Maintenance Utility]. (See “Starting Maintenance Utility” ([MU01-10](#)).)

5. Selecting replacement parts by Maintenance Utility.

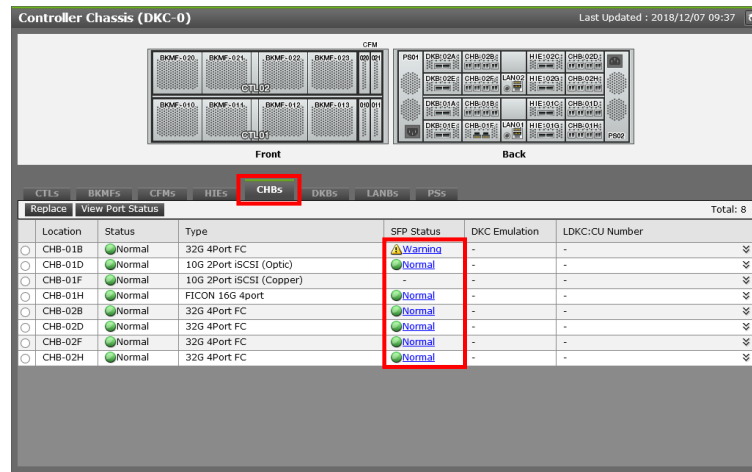
(1) <Main window>

Select [DKC-X] in the main window.



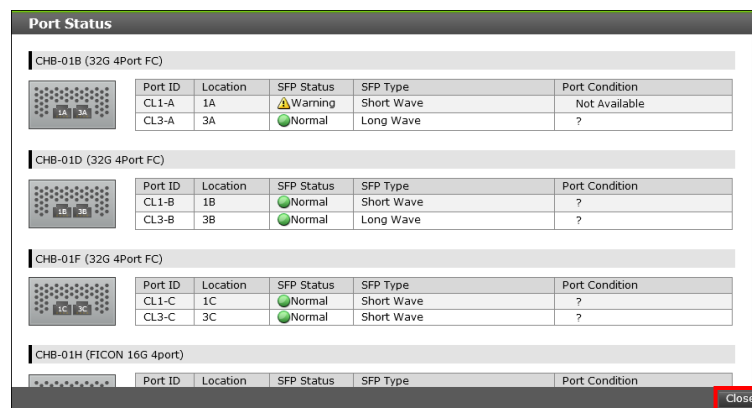
(2) <Controller Chassis window>

Click the [CHBs] tab in the Controller Chassis window and click “Warning” in the [SFP Status] column. See “Alert Display Related to FRU (Field Replacement Unit)” (MU02-10) for [Status].



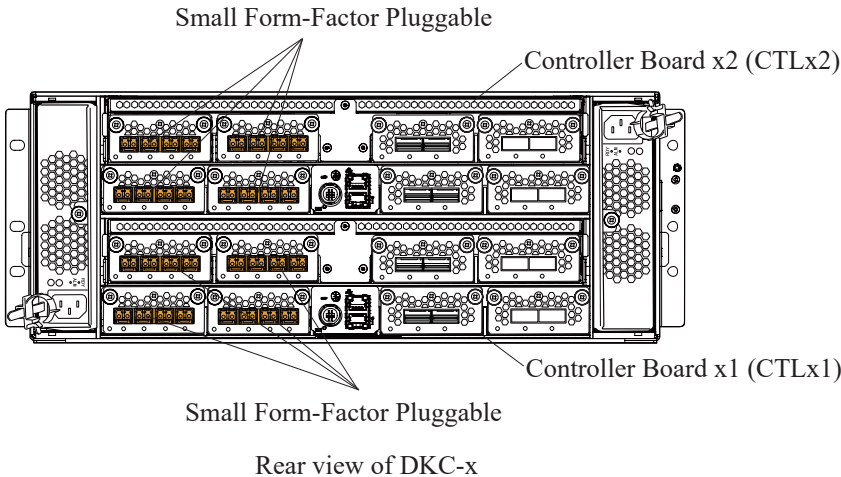
(3) <Check Small Form-Factor Pluggable (SFP)>

Select a Small Form-Factor Pluggable (SFP) to be replaced. Click [Close].



6. Small Form-Factor Pluggable (SFP) Replacement Processing

Location	Replacement parts name		Part Name
Rear of DKC	1	Small Form-Factor Pluggable	<ul style="list-style-type: none">• SFP Shortwave 16 G• SFP Longwave 16 G• SFP Shortwave 32 G• SFP Shortwave 10 G



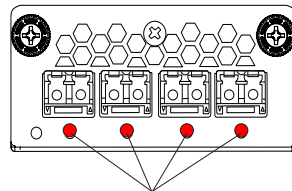
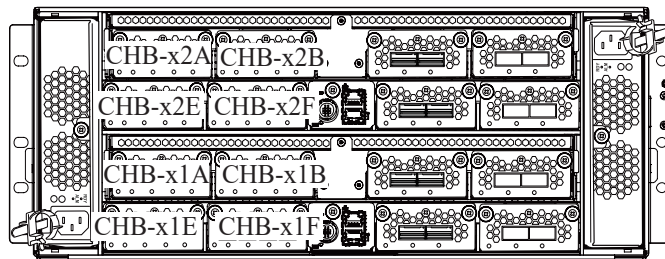
*1: DKC-x
↳ DKC No. (0, 1, 2,, 5)

NOTE: The above illustrations are for VSP 5500 and VSP 5500H. For VSP 5100 and VSP 5100H, only CTL01 and CTL12 are installed.

NOTICE: To prevent part failures caused by static electrical charge built up on your own body, be sure to wear a wrist strap connected to the Storage System before starting and do not take it off until you finish. See “Note on Installing and Removing Parts (REP(GE)01-30)”.

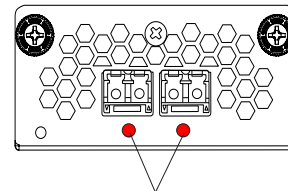
- (1) Check that the PORT LED (red) on the DKC Small Form-Factor Pluggable (SFP) to be replaced lights up. When the LED does not light up, check the location of the Small Form-Factor Pluggable (SFP) to be replaced in the Maintenance Utility window.

Figure 1-1 PORT LED Location



PORT LED

For 16 G (4 port) FICON/16, 32 G (4 port)
FC Channel Board



PORT LED

For 10 G iSCSI Channel Board

- (2) Remove the cables from the Small Form-Factor Pluggable (SFP) to be replaced.

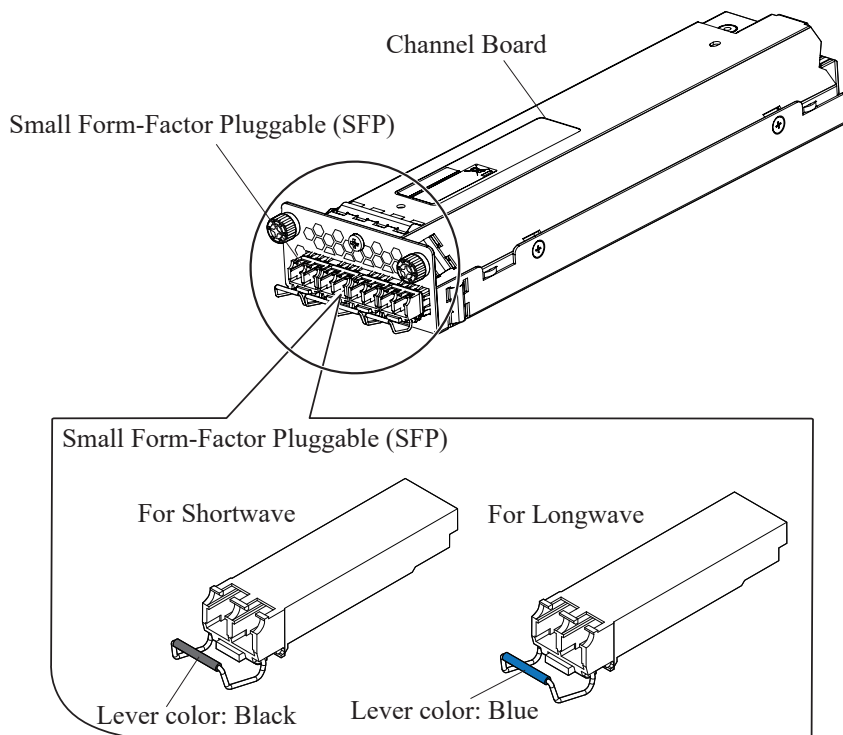
- (3) Replace the Small Form-Factor Pluggable (SFP).
- (a) Open the Small Form-Factor Pluggable (SFP) lever and pull out the Small Form-Factor Pluggable (SFP).
If you cannot remove the Small Form-Factor Pluggable (SFP), pull it out while pushing open the lever toward you.

NOTE : After removing the Small Form-Factor Pluggable, wait for about 10 seconds before inserting a new one.

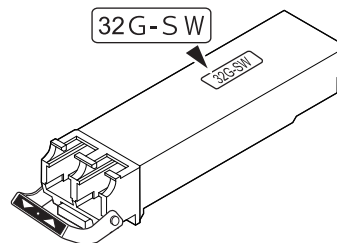
- (b) Check the Small Form-Factor Pluggable (SFP) insertion direction and inset the Small Form-Factor Pluggable (SFP) into the port until it clicks.

NOTE : Be sure to install the same type of Small Form-Factor Pluggable (SFP) as the removed one.

Figure 1-2 Replacement of Small Form-Factor Pluggable (SFP)



The label "32G-SW" is attached to the 32 Gbps Small Form Factor Pluggable (SFP).



(4) Check the state of cable connectors.

- NOTE:
- If there is foreign matter or dust, remove it with cut gauze.
 - If you find a deformation, break, or the like, replace the cable with a spare part.

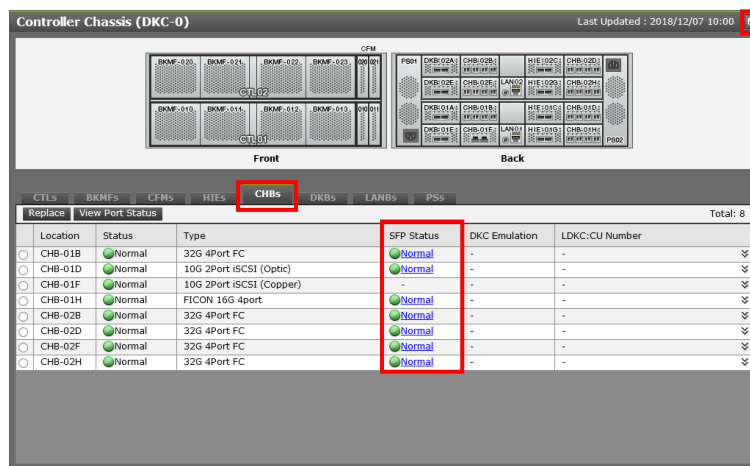
(5) Connect the cables to the replaced Small Form-Factor Pluggable (SFP).

NOTE: Check that cable latch clicks and the cables are surely connected.

7. Restoring replacement parts by Maintenance Utility

Click the [CHBs] tab in the Controller Chassis window and check that a Status of the replaced Small Form-Factor Pluggable (SFP) is "Normal".

NOTE : Click [refresh] on the upper right of the window to update the window, and then check the status.



8. Closing Maintenance Utility

(1) Click [Logout] to close the window.

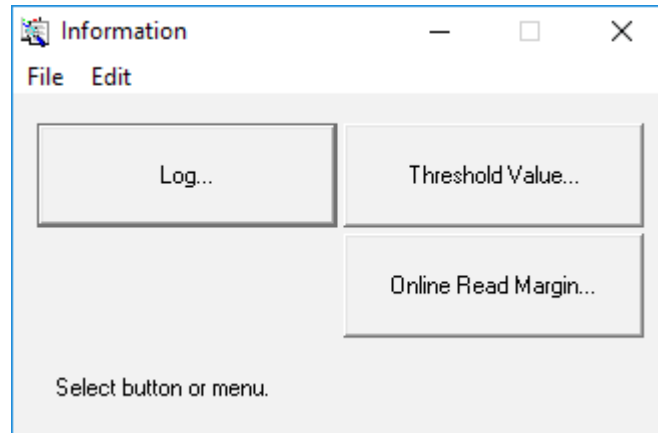
(2) <Get the error information>

Collect small system dumps by referring to "Dump/Auto Dump" ([SVP02-09-10](#)).

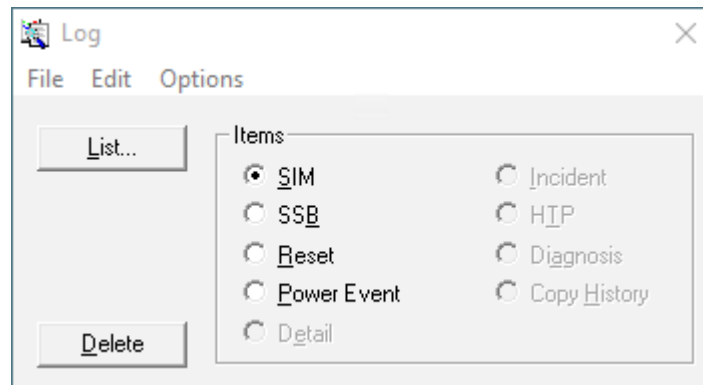
(3) Refer to the "Use of OnlineDumpTool" ([SVP02-21-10](#)), please upload the error information.

9. Completing the SIM log

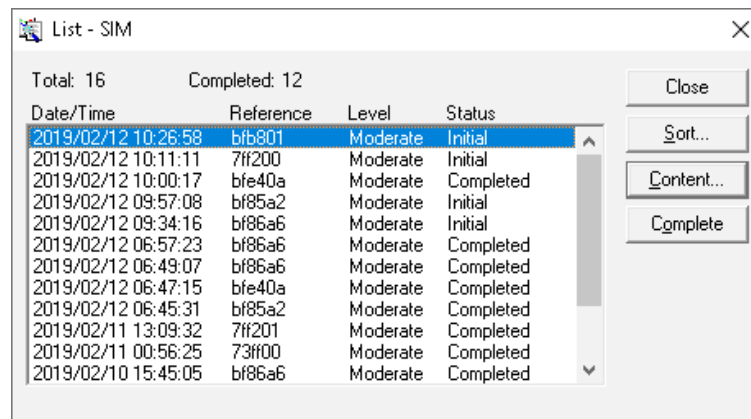
- (1) Change the mode to [Modify Mode], and then select [Information].
- (2) In the Information window, click [Log...].



- (3) In the Log window, select [SIM] and then [List...].



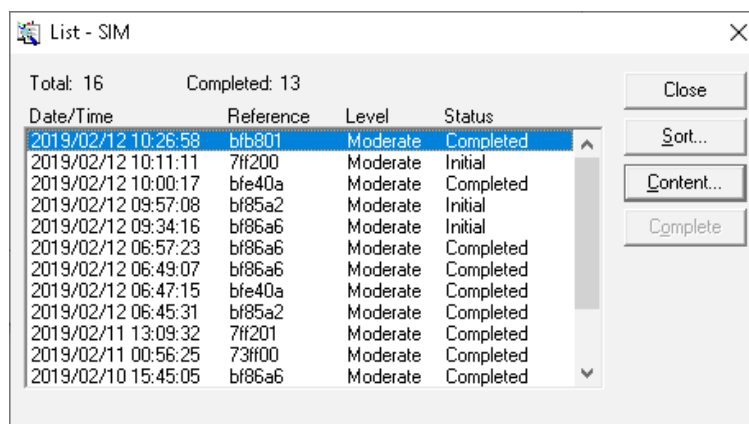
- (4) In the List-SIM window, select the data for which you end the process, and then click [Complete].



- (5) In the Complete window, click [Yes].



- (6) In the List-SIM window, confirm that the “Status” of the data has become “Completed”.



- (7) In the List-SIM window, click [Close].

Close the Log window, then the Information window.

Change the mode from [Modify Mode] to [View Mode].

NOTE: If the MESSAGE LED is lit on the HSNPANEL after you complete all SIMs, display SIMs to check that SIM statuses are “Completed”. If SIM statuses are not “Completed”, wait for five minutes, and then perform the procedure for completing the SIM log again.

10. Checking Normality

Perform the normality check according to “Checking Normality (TRBL02-06-10)”.