

# ***[HSNPANEL REPLACEMENT PROCESSING - RPNL]***

---

1. Connecting the Maintenance PC

Connect the Maintenance PC to the SSVP, and then log in to the SVP.

- “Attachment/Removal Procedure of Maintenance PC” ([INST\(IN\)13-02-10](#))
- “Connection to the SVP” ([SVP01-30](#))

---

2. Starting the SVP window

From the menu of Web Console, click [Maintenance Components] - [Maintenance Other Components].

---

3. Starting Maintenance Utility

In the SVP window, click [Maintenance Utility]. (See “Starting Maintenance Utility” ([MU01-10](#)).)

---

4. Confirm the location of HSNBX

Turn on the Locate LED on the HSNBX in which the HSNPANEL to be replaced is installed to check the chassis location.

Refer to “Turn on/off Locate LEDs” ([MU02-40](#)) for the operation to turn on the Locate LED.

---

5. Changing the operation mode

Change the mode to [Modify Mode].

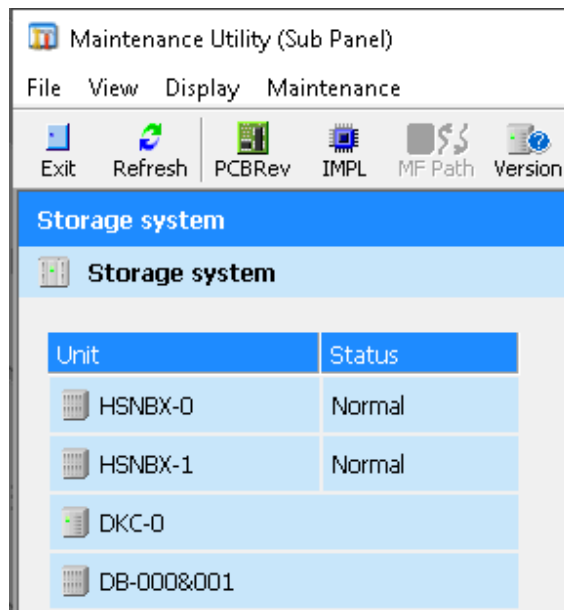
---

6. Starting Maintenance Utility (Sub Panel) window

In the SVP window, click [Maintenance Utility (Sub Panel)].

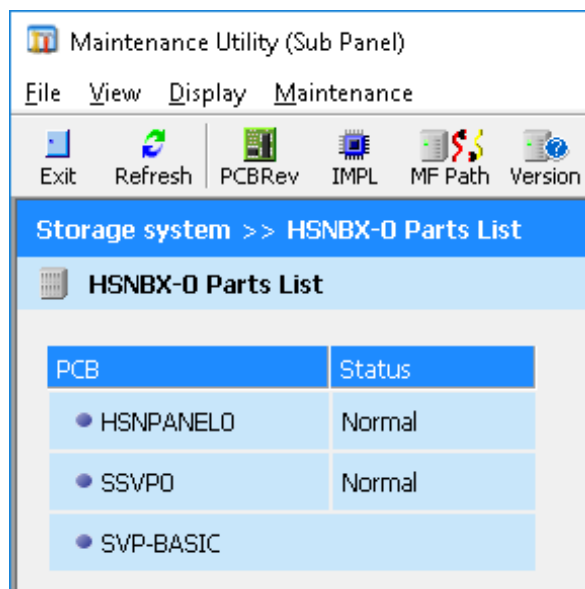
## 7. &lt;Specifying the part to be replaced (1)&gt;

In the Storage system window, click the HSNBX in which the HSNPANEL to be replaced is installed.



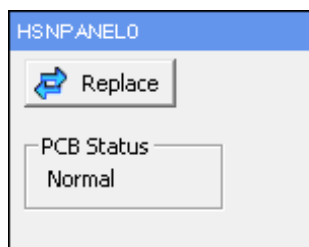
## 8. &lt;Specifying the part to be replaced (2)&gt;

Click HSNPANELn to be replaced.



9. <Checking the start of replacement>

Click [Replace].

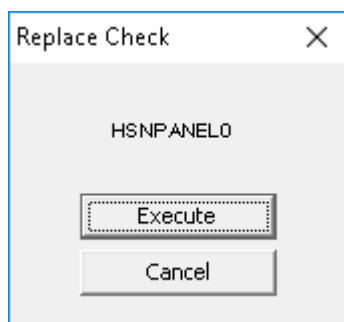


10. <Execute>

If any other message that is not explained below is displayed, see the Message Section ([MSG00-00](#)).

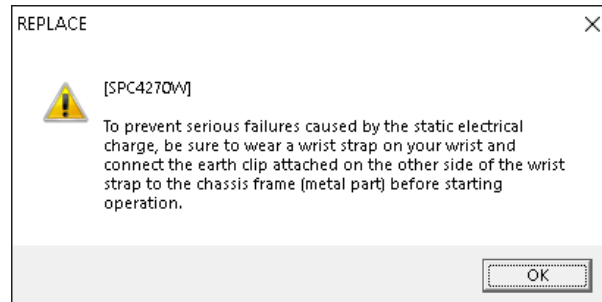
A window shown on the right is displayed.

Click [Execute].



## 11. &lt;Wear a wrist strap without fail&gt;

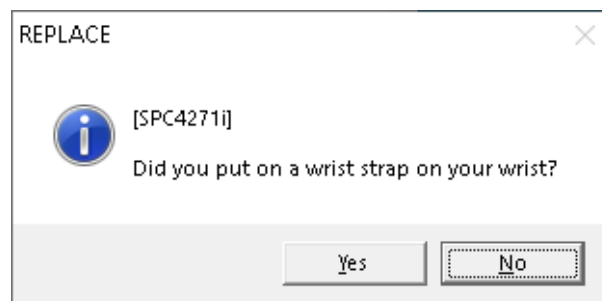
The message “To prevent serious failures caused by the static electrical charge, be sure to wear a wrist strap on your wrist and connect the earth clip attached on the other side of the wrist strap to the chassis frame (metal part) before starting operation.” is displayed.



Wear a wrist strap, and then click [OK].

The message “Did you put on a wrist strap on your wrist?” is displayed.

Click [Yes], and then go to [Step 12](#).



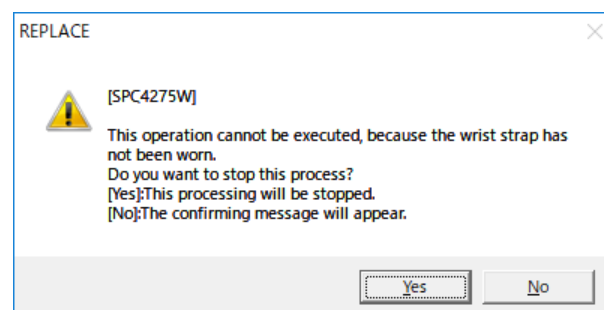
NOTE: If you are not wearing a wrist strap, click [No] in response to the message above. Then, the message below is displayed. Click [Yes] to stop the processing, wear a wrist strap, and then resume the operation.

“This operation cannot be executed, because the wrist strap has not been worn.

Do you want to stop this process?

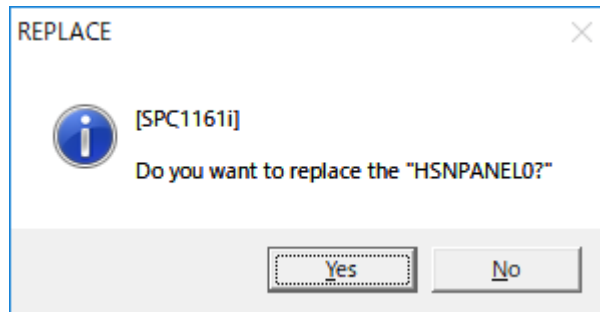
[Yes]: This processing will be stopped.

[No]: The confirming message will appear.”



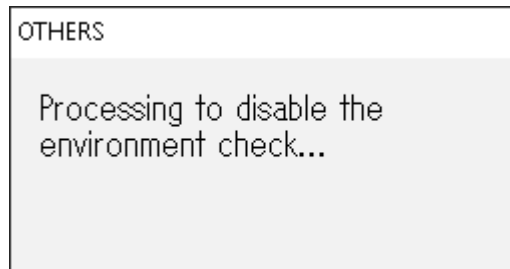
## 12. &lt;Check beginning of HSNPANEL Replacement&gt;

A message [SPC1161i] is displayed. Click [Yes].



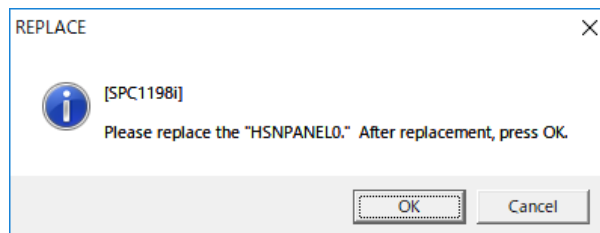
## 13. &lt;Check environment monitor stopped state&gt;

The message "Processing to disable the environment check..." is displayed.



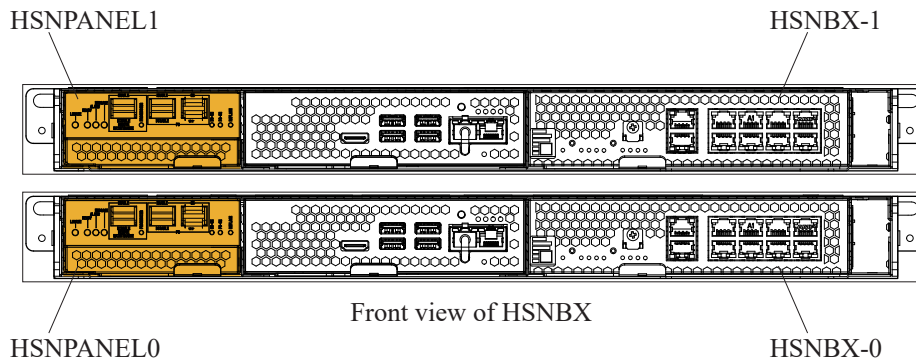
## 14. &lt;Check beginning of HSNPANEL Replacement&gt;

A message [SPC1198i] is displayed. (Click [OK] after replacing the special part.)



## 15. HSNPANEL Replacement Processing

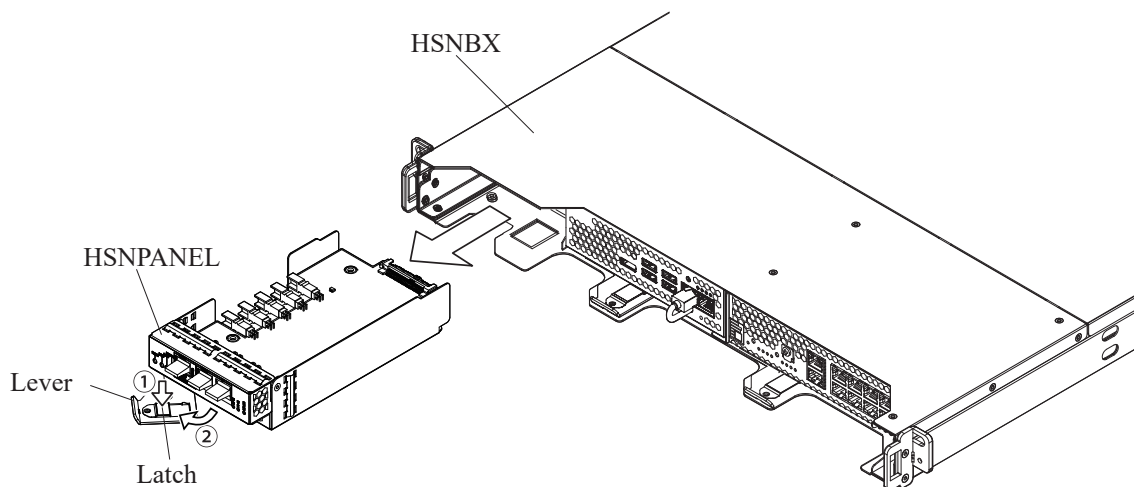
Location	Function Name of Component		Part Name
Front of HSNBX	1	HSNPANEL	HSNPANEL



**NOTICE:** To prevent part failures caused by static electrical charge built up on your own body, be sure to wear a wrist strap connected to the Storage System before starting and do not take it off until you finish. See "Note on Installing and Removing Parts" ([REP\(GE\)01-30](#)).

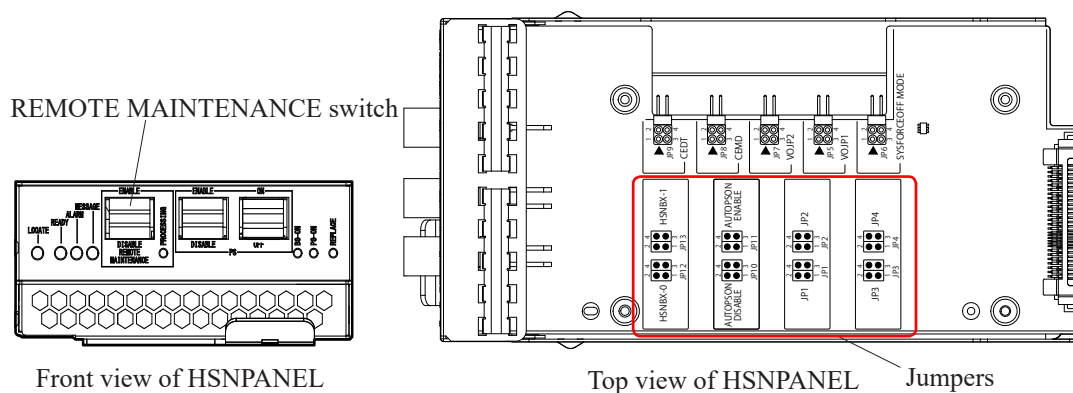
- (1) Removing the HSNPANEL
  - (a) Open the lever while pressing its latch securing the HSNPANEL.
  - (b) Open the lever completely until the HSNPANEL is pulled out toward you.
  - (c) Remove the HSNPANEL by pulling out it while holding it with your hands.

Figure 1-1 Removing the HSNPANEL



- (2) Setting the switches and jumpers on the new HSNPANEL
  - (a) On the front side of the new HSNPANEL, make the same switch settings as for the removed HSNPANEL.
  - (b) On the top surface of the new HSNPANEL, make the same jumper settings as for the removed HSNPANEL.
  - (c) Take a note of the status of the REMOTE MAINTENANCE switch on the front side of the removed HSNPANEL.

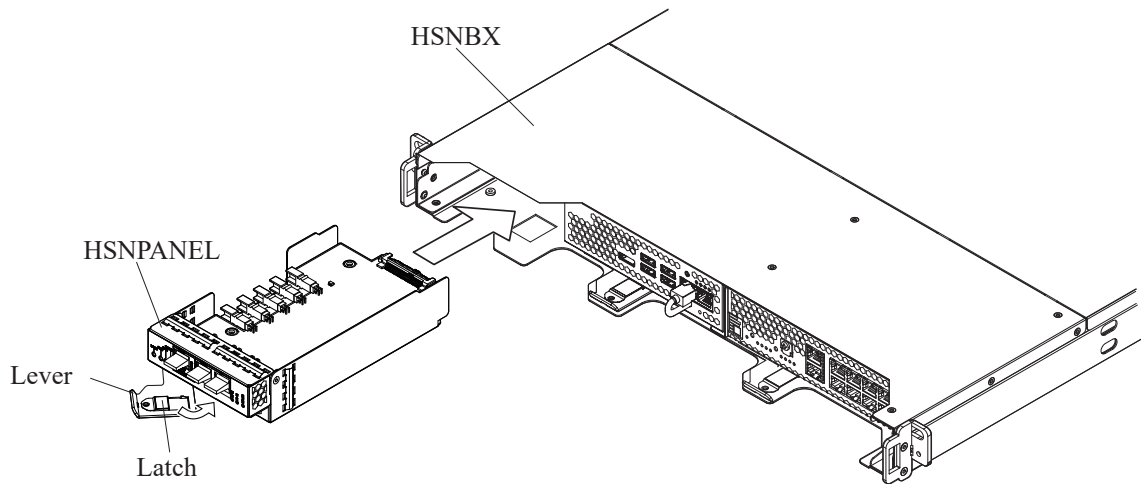
Figure 1-2 Setting Switches and Jumpers on HSNPANEL





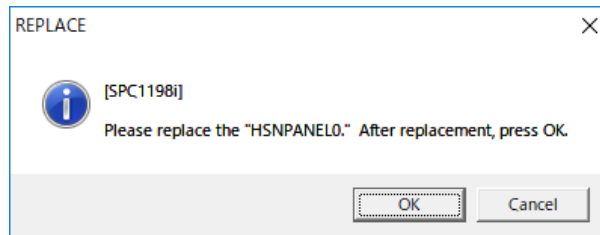
- (3) Installing the HSNPANEL
  - (a) Open the lever on the new HSNPANEL completely toward you.
  - (b) Insert the HSNPANEL fully and push the lever until the latch on the lever clicks and is locked.

Figure 1-3 Installing the HSNPANEL



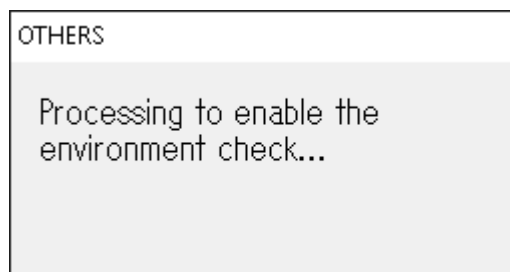
## 16. &lt;Check replacement of HSNPANEL&gt;

A message [SPC1198i] is displayed. Click [OK].



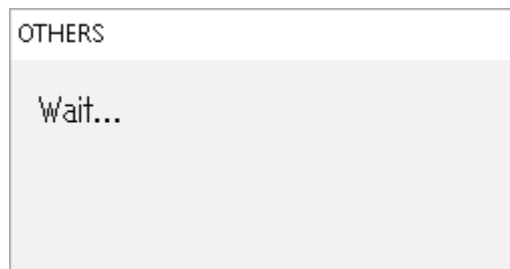
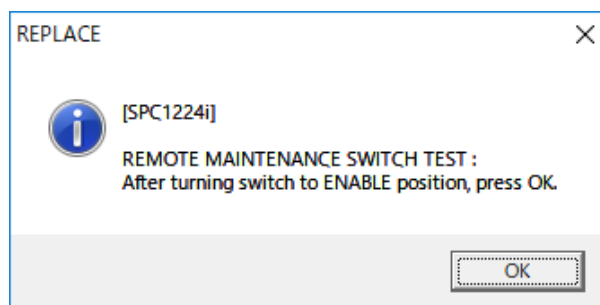
## 17. &lt;Check environment monitor start processing&gt;

The message "Processing to enable the environment check..." is displayed.

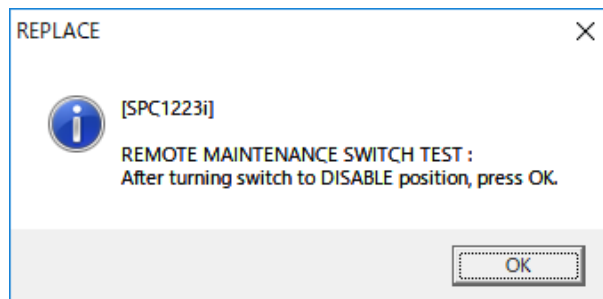


## 18. Wait for a minute until the environment monitor information after the replacement of HSNPANEL is obtained.

When replacing HSNPANEL1, go to [Step 21](#).

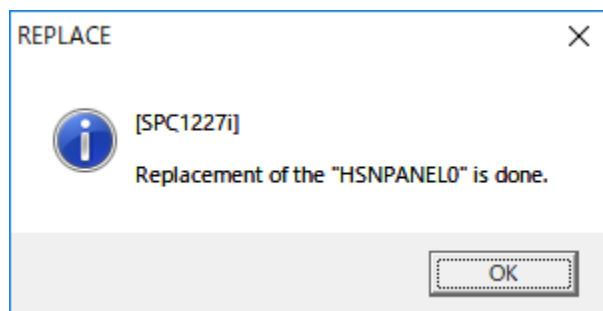
19. In response to the message [SPC1224i], turn the REMOTE MAINTENANCE switch to ENABLE (upper position) (see [Figure 1-2](#)), and then click [OK].

20. In response to the message [SPC1223i], turn the REMOTE MAINTENANCE switch to DISABLE (lower position), and then click [OK].



21. <Check end of replacement>

A message [SPC1227i] is displayed. Click [OK].



22. <Restoring switch states on HSNPANEL>

Set the REMOTE MAINTENANCE switch on the HSNPANEL to the status same as that you took a note of in [Step 15-\(2\)-\(c\)](#).

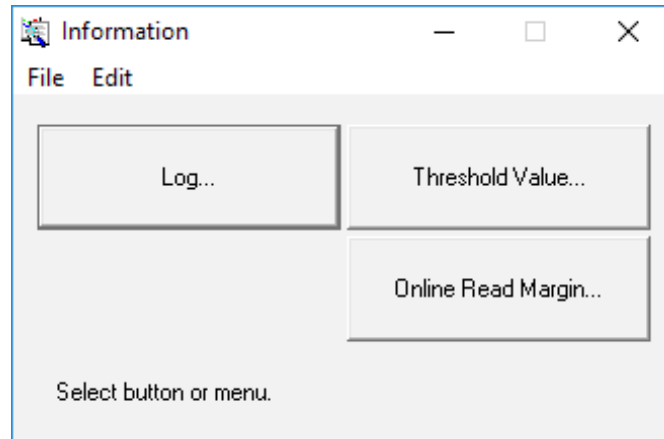
23. Turn off the Locate LED on the HSNBX in according with "Turn off Locate LED" ([MU02-70](#)).

24. Closing Maintenance Utility

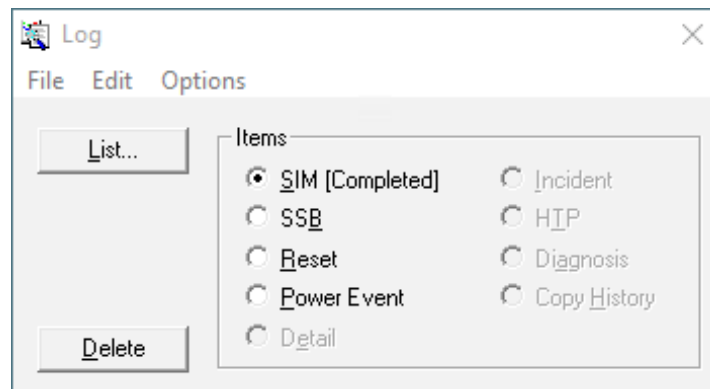
Click [Logout] to close the window.

## 25. Completing the SIM log

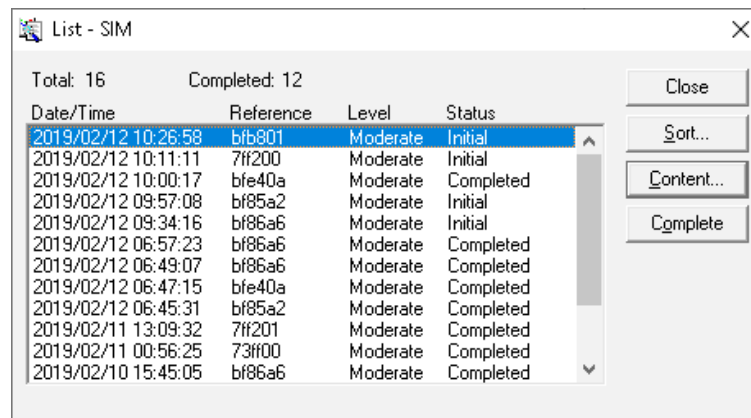
- (1) Change the mode to [Modify Mode], and then select [Information].
- (2) In the Information window, click [Log...].



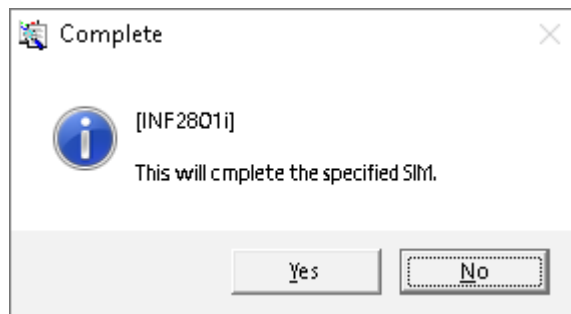
- (3) In the Log window, select [SIM] and then [List...].



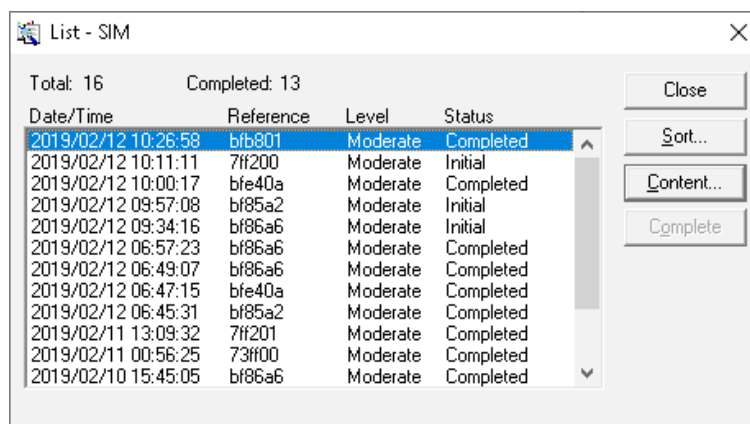
- (4) In the List-SIM window, select the data for which you end the process, and then click [Complete].



- (5) In the Complete window, click [Yes].



- (6) In the List-SIM window, confirm that the “Status” of the data has become “Completed”.



- (7) In the List-SIM window, click [Close].

Close the Log window, then the Information window.

Change the mode from [Modify Mode] to [View Mode].

NOTE: If the MESSAGE LED is lit on the HSNPANEL after you complete all SIMs, display SIMs to check that SIM statuses are “Completed”. If SIM statuses are not “Completed”, wait for five minutes, and then perform the procedure for completing the SIM log again.

## 26. Changing the operation mode

In the SVP window, change the mode to [View Mode].

## 27. Checking Normality

Perform the normality check according to “Checking Normality ([TRBL02-06-10](#))”.