

18. SVP MESSAGE SECTION

REV.2	Mar.1995	Jun.1995	Jul.1995			
-------	----------	----------	----------	--	--	--

18 SVP MESSAGE

18.1 Type of Messages Displayed by the SVP	SVPMSG01-10
18.2 Actions by Warning Messages	SVPMSG02-10
18.3 Recovery procedure for SVP failuers	SVPMSG03-10

18. SVP Message

18.1 Type of Messages Displayed by the SVP



Waiting for input



Information Message



Warning Message



Warning Message

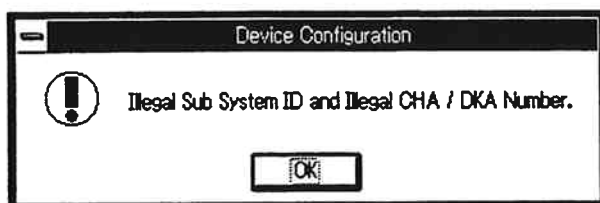
18.2 Action by Warning Messages



[Explanation]; The operation mode is set to "View Mode".

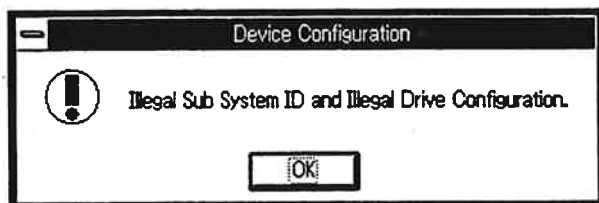
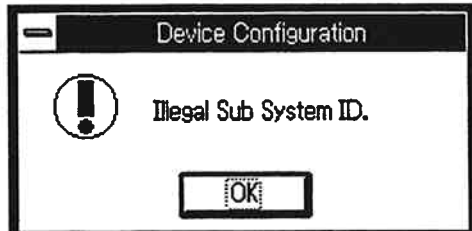
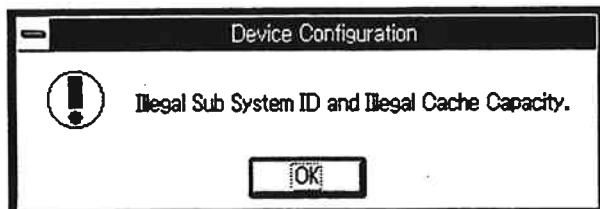
[Action]; Set the operation mode to "ModifyMode".

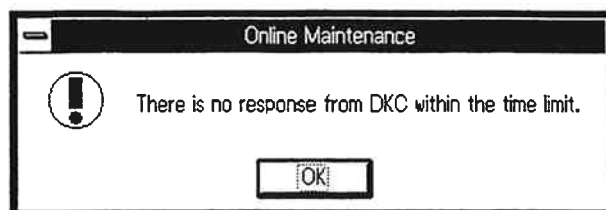
See INSTALL Section 3.2.5, Configuration Definition or REPLACE Section PRE-PROCEDURE A.



[Explanation]; An invalid parameter was found on the Device Configuration screen during INSTALL.

[Action]; Enter the correct parameter for the Device Configuration screen.





[Explanation]; Communication failuer between DKC and SVP.

[Action]; Close "ONLINE MAINTENANCE" temporarily and restart. If the error persists after restarting "ONLINE MAINTENANCE", check the connection between the DKC and SVP. Also check to determine whether an error has been reported to the host.



[Explanation]; Two or more physical devices are selected. Only one physical device can be selected for each subsystem.

[Action]; Select only one physical device (including the devices belonging to other SCSI groups (HDU-xx)) for the subsystem.



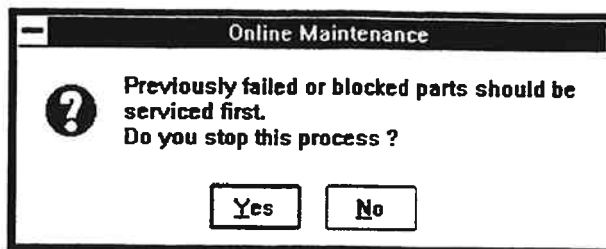
[Explanation]; No physical device is selected.

[Action]; Select the physical device that is to be serviced (check the box).



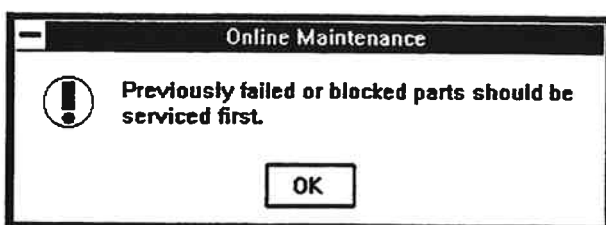
[Explanation]; The target application is already started.

[Action]; Switch to the target application. If the application is not started, close the window and reset the PC with CTRL + ALT + DEL.



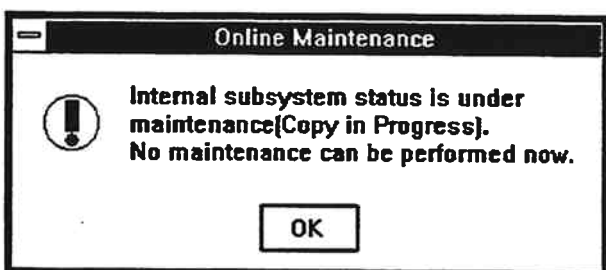
[Explanation]; If a resource has been failed or blocked, maintenance which blocks other normal part is inhibited.

[Action]; Select [Yes] to stop maintenance and replace previously blocked part first. But if you want to continue this process, select [No] and input password.



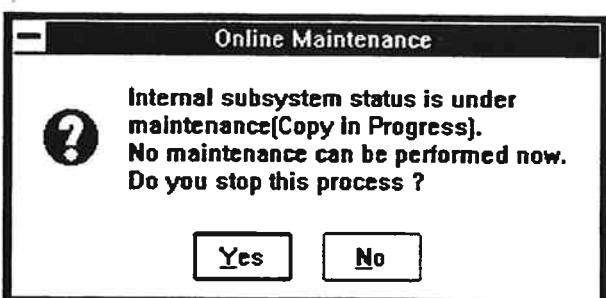
[Explanation]; If a resource has been failed or blocked, maintenance which blocks other normal part is inhibited.

[Action]; Select [OK] to stop maintenance and replace previously blocked part first.



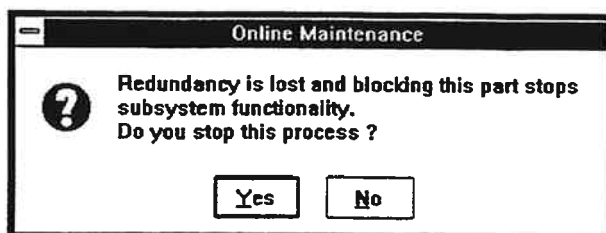
[Explanation]; While the DKC is under maintenance, other than LDEV Maintenance such as correction copy, drive copy, or emergency destage is going, any operations are inhibited. This message means the system is under such a status.

[Action]; Wait until above process ends, or terminate the copy process from SVP in case copy in progress. If processing cannot be interrupted, refer to TRBL05-160.



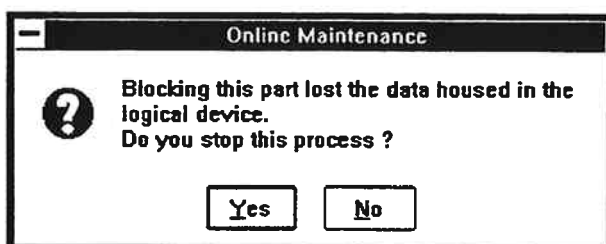
[Explanation]; While the DKC is under maintenance at LDEV Maintenance, such as correction copy, drive copy, or emergency destage is going, any operations are inhibited. This message means the system is under such a status.

[Action]; Select [Yes] to stop maintenance and wait until above process ends, or terminate the copy process from SVP in case copy in progress. If processing cannot be interrupted, refer to TRBL05-160. But if you want to continue this process, select [No] and input password.



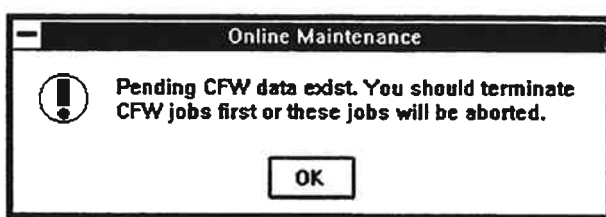
[Explanation]; Maintenance, which blocks the last resource when redundancy lost, is inhibited.

[Action]; Select [Yes] to stop maintenance and replace previously blocked part first. But if you want to continue this process, select [No] and input password.



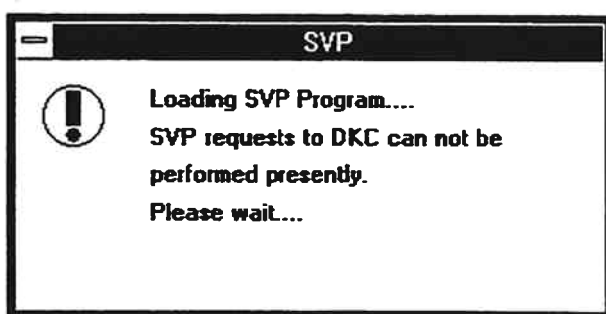
[Explanation]; Maintenance, which lost the data housed in the logical device is inhibited.

[Action]; Select [Yes] to stop maintenance and replace previously blocked drive first. But if you want to continue this process, select [No] and input password.



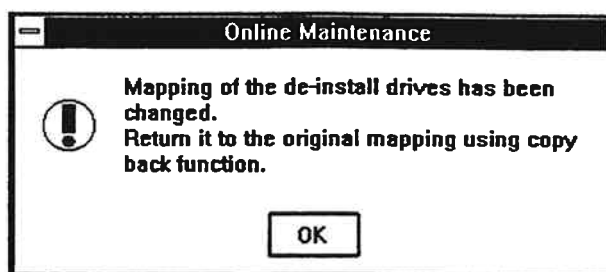
[Explanation]; Maintenance which include cache blockade, such as cache replace, cache install, cache de-install, physical device de-install or cluster replace, can not be performed if pending CFW data exist.

[Action]; Necessary to erase the pending CFW data on cache. SSM (Set Subsystem Mode) command or PSF(Perform Subsystem Function) command execution is requested to the customer. Interrupted processing is retried after command execution.



[Explanation]; Communication between DKC and SVP is not available.

[Action]; Wait until this message is extinguished, then do a next operation.



[Explanation]; Physical device de-installation can not be executed because the mapping of the devices is changed.

[Action]; Replace a blockade(or failed) physical device, and return to the original mapping using copy back operation.



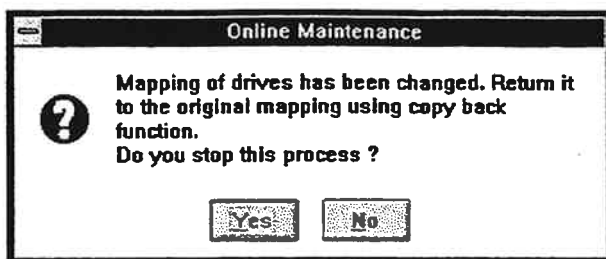
[Explanation]; In LDEV installation, when emulation type of LDEV is different, the Cache Directory Size of Spare Drive may not be allocated.

[Action]; De-install the Spare Drive and then install LDEV and Spare Drive.



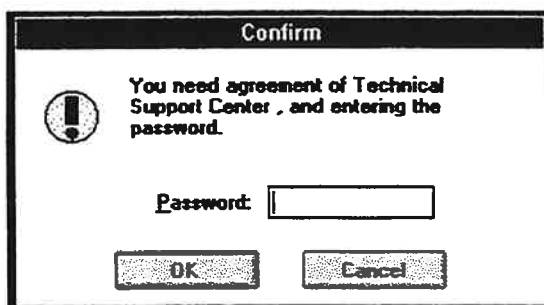
[Explanation]; Emulation type check is not supported in DKCMAIN micro-program.

[Action]; De-install the Spare Drive and then install LDEV and Spare Drive.



[Explanation]; Other than Physical device (DKA/CHA/CACHE) de-installation can not be executed because the mapping of the devices is changed.

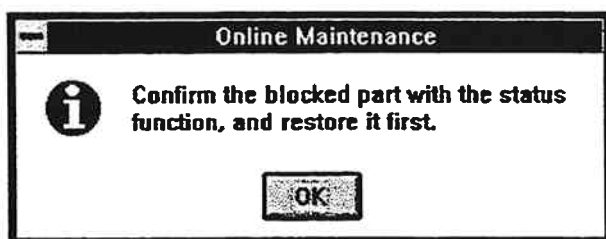
[Action]; Select [Yes] to stop maintenance and replace a blockade (or failed) physical device, and return to the original mapping using copy back operation. But if you want to continue this process, select [No] and input password.



[Explanation]; If maintenance is suppressed, input the continuation processing password.

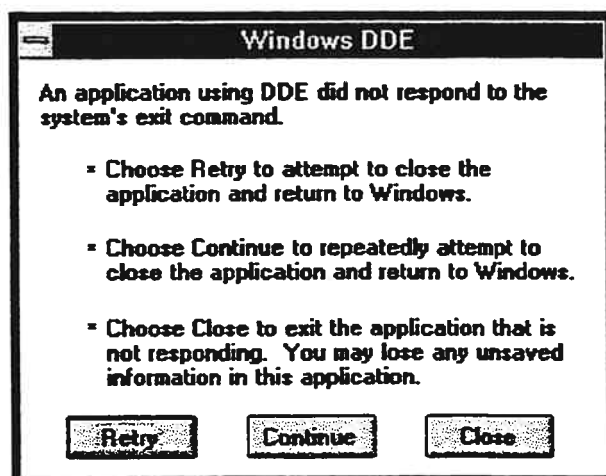
[Action]; If you want to continue this process, input the password and select [OK]. If you want to stop maintenance, select [Cancel].

[Note]; Password is needed for this operation. Please call Technical Support Center to obtain password and authorization



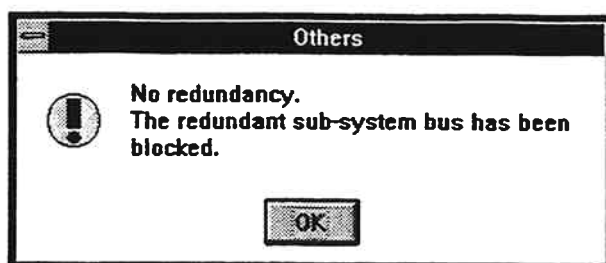
[Explanation]; Recover a blockade part.

[Action]; Confirm blockade part in the status window, and restore it first.



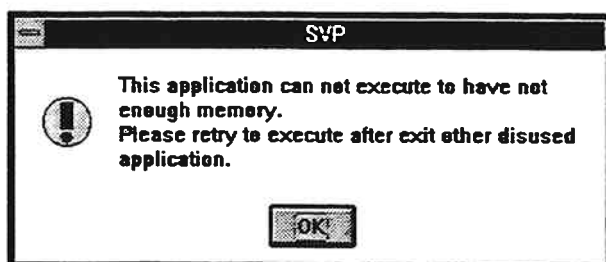
[Explanation]; The application is already stopped. This phenomenon sometimes occurs in the process of stopping a system

[Action]; Select [Close], and continue next process.



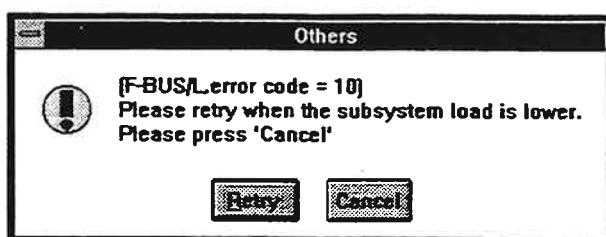
[Explanation]; Maintenance, which blocks the last subsystem bus, is inhibited.

[Action]; Stop the maintenance and replace the blocked part first.



[Explanation]; This application cannot be started due to an insufficient capacity of memory in the PC.

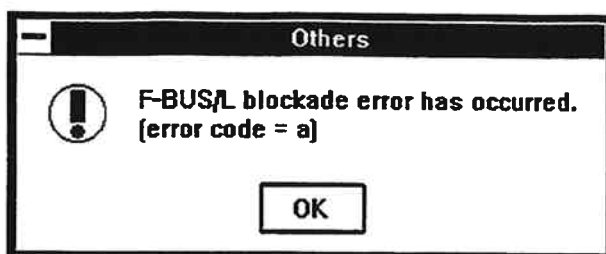
[Action]; Terminate unnecessary application and start this application again. But if the same message is displayed re-boot the PC.



[Explanation]; Maintenance cannot be performed if subsystem is busy.

[Action]; Refer to the following table by error code [yy].
Select [Retry] to retry the maintenance.
But if you want to stop this process, select [Cancel].
[xxxxx, error code = yy]

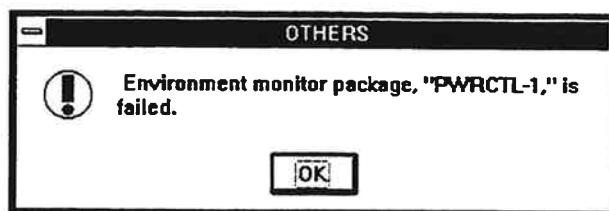
Error code [yy]	Means	Action
3	Pending failure exists	Execute maintenance again after a few minutes.
6	Data transferring busy	Execute maintenance again. If same message is displayed three times, execute the maintenance when the load of subsystem is low.
7		
9	Bus arbiter changing failed	Execute maintenance again after a few minutes.
b	LED turning ON failed	Execute maintenance again after a few minutes.
c	LED turning OFF failed	Execute maintenance again after a few minutes.
10	Processing another maintenance	Execute maintenance again after a few minutes.
11	Maintenance job time out	Execute maintenance again after a few minutes.
12	Subsystem busy	Execute maintenance again. If same message is displayed three times, execute the maintenance when the load of subsystem is low.
13	Processor busy	Execute maintenance again after a few minutes.



[Explanation]; Error has occurred on maintenance, Bus Test.

[Action]; Refer to the following table by error code [yy].

Error code [yy]	Means	Action
1	No substituted bus arbiter	Replace a failed part (CHA or DKA) first. (TRBL05-110)
2	No redundancy	Replace another terminator. (REP01-140, ID=RTM1/RTM2) Execute maintenance again.
4	No response from a certain processor	Execute Bus Test. (SVP02-770) Attach a shut down jumper pin to the PCB, which has an error in the Bus Test. (CHA (SERIAL) :REP03-350) (CHA (PARALLEL):REP03-370) (DKA :REP03-390) Execute maintenance again. Replace the PCB to be attached a shut down jumper pin.
8	Arbiter switch is impossible	Execute Bus Test. (SVP02-770) Attach a shut down jumper pin to the PCB, which has an error in the Bus Test. (CHA (SERIAL) :REP03-350) (CHA (PARALLEL):REP03-370) (DKA :REP03-390) In this case, CHK3 or other equipment errors are reported because no preprocessing is performed. However, you should ignore these errors. Execute maintenance again. Replace the PCB to be attached a shut down jumper pin.
a	Bus restoration failed	Error Recovery Procedure for Bus Blocking. (TRBL05-20) Execute maintenance again.
f	Terminator restoration failed	Replace a failed Terminator first. (REP02-390) Execute maintenance again.
14	Arbiter switch will bring system power-down	Replace another terminator. (see REP01-140, ID=RTM1/RTM2) Execute maintenance again.
1000008	Under reconfiguration	Configuration set up Job is now running at subsystem processor. Check STATUS DISPLAY. Execute maintenance again.
fffff	Communication time out	Check LAN cable. (TRBL05-70)



[Explanation]; Error has occurred on environment monitor package "xxxxxx".

[Action]; Refer to the action code.



[Explanation]; There is some obstacle SCSI cable.

[Action]; Replace SCSI buffer with SCSI cable.

[interpretation of bitmap]

There is 8 figures. Each number correspond to a DKA.

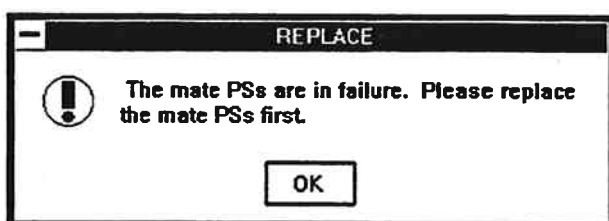
For example, in right illustration, There is some obstacle SCSI cable which connected to DKA-2L.

DKA-1G	DKA-1H	DKA-1J	DKA-1K	DKA-2L	DKA-2M	DKA-2N	DKA-2P
--------	--------	--------	--------	--------	--------	--------	--------

Each hex number show obstacle SCSI cable per DKA.

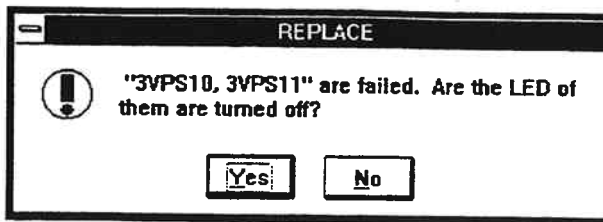
For example, in right illustration, forth SCSI cable which connected to DKA-2L is obstacle.

Cable 1	Cable 2	Cable 3	Cable 4
---------	---------	---------	---------



[Explanation]; Mate PS is in failure.

[Action]; At first replace mate PS.



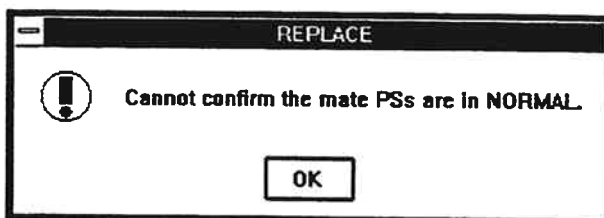
[Explanation]; Both target and mate PSs are NG.

[Action]; Check LED of PSs are turned off. If LED is turned off, select [Yes] (CL) and continue replacement, if LED is turned on, select [No] (CL).



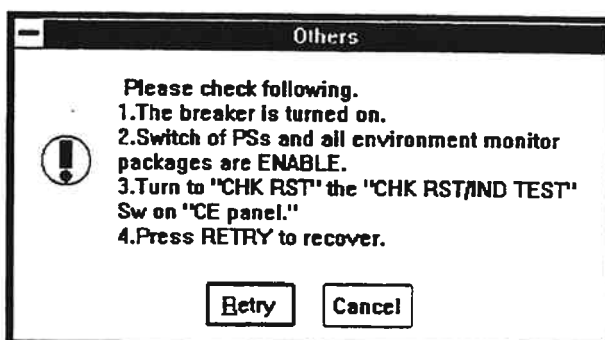
[Explanation]; Environment monitor system detect PS failure, but PS is normal. Environment monitor system may have problem.

[Action]; Check environment monitor system.



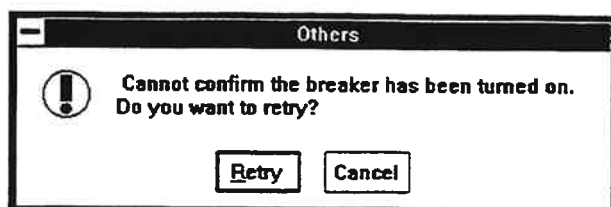
[Explanation]; Error has occurred in reading of environment monitor.

[Action]; Retry replacement. But if same error has occurred again, check environment monitor system.



[Explanation]; Detect Breaker Box or AC BOX in maintaining cluster is not powered on, or PSs which are supplied power source from them.

[Action]; Check terms written in message, and press [Retry] (CL). But PSs which are not turned ENABLE exists, press [Cancel] to abort and replace them at first. And if same error has occurred again in spite of all PSs are ENABLE, press [Cancel] to abort and check environment monitor system.



[Explanation]; Error has occurred in reading of environment monitor.

[Action]; Press [Retry] (CL). But if same error has occurred again, press [Cancel] to abort and check environment monitor system.

18.3 Recovery procedure for SVP failuers

18.3.1 Types of SVP failures

- ① Display of applicaion error message on windows dialog box.
- ② Windows display hang up.
 - (1)Keyboard operation possible.
 - (2)Keyboard operation not possible.
- ③ Display of non windows error. (System error)

18.3.2 Recovery procedure based on type of failure.

See TRBL03-71

18.3.3 SVP HD Diagnosis

If SVP HD (Hard Drive) may be failed, do as following procedures.

(1) What is running?

- a. See what is displayed.

If Windows is displayed, Go to (2).

If DOS prompt like "C:\\" is displayed, Go to (4).

Otherwise, Go to (3).

(2) Exit Windows (Stop SVP)

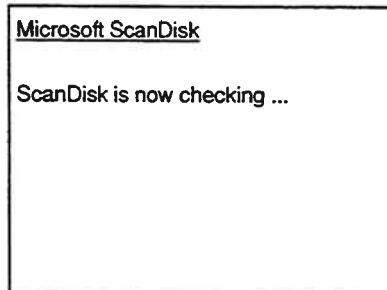
- a. Select "Program Manager" window.
b. Press Alt-key and F4-key. (Or select 'File-Exit Windows' menu.)
c. Select (CL) [OK] to agree to exit Windows.
d. Go to (4).

(3) Stop Any Program

- a. Press 2 keys simultaneously — Ctrl-key and 'C' — to stop program.
If DOS prompt is displayed, Go to (4).
b. Press 3 keys simultaneously — Ctrl-key, Alt-key and Del-key — to reboot SVP.
c. Wait until SVP restart, or any problem occurs.
d. Go to (1).

(4) SVP HD Diagnosis

- a. Type the under-lined command and press Enter-key as following.
C:\>_DKC200\OTHERS\SVPHDDG
b. Watch the diagnosis messages displayed on the screen.
After the diagnosis, read messages, and do following action.



Diagnosis messages

Message	Explanation	Action
SVP HD TEST:NORMAL END	Diagnosis has completed.	Go to (5).
SVP HD TEST:PROBLEM HAS DETECTED	There are some problems in SVP HD.	Read following message.
SVP HD TEST:ABNORMAL END	Diagnosis has incompleted.	Read following message.
SVP HD TEST:SYNTAX ERROR	Diagnosis program may be destroyed.	Read following message.
SVP HD TEST:PROBLEM HAS FIXED	Diagnosis has repaired SVP HD.	Go to (5).
SVP HD TEST:ABORTED	Diagnosis has aborted by operator.	Read following message.
SVP HD TEST:FIX START	Diagnosis has launched to repair SVP HD.	Go to (4) b.
Do you want to try to fix SVP HD.[y,n]	Confirm your operation.	Press 'y' key to fix SVP HD. Press 'n' key not to fix SVP HD and to abort diagnosis.
Please turn off SVP and replace it.	SVP should be replaced.	Power off SVP. Replace SVP.

(5) Reboot SVP

- a. Press 3 keys simultaneously — Ctrl-key, Alt-key and Del-key — to reboot SVP.
[End of SVP HD Diagnosis]

18.4 New type of message displayed by the SVP (Message ID)

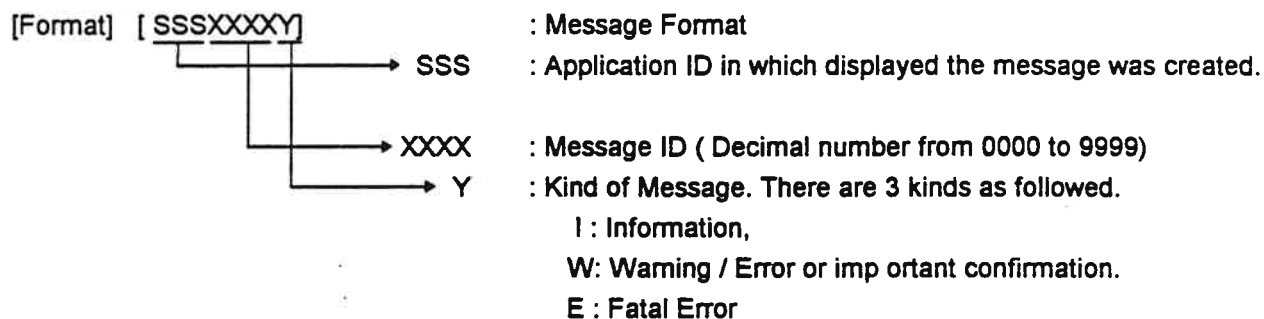
18.4.1 About Message ID

SVP added a message ID for each displayed message. (Some of them are not supported).

In this section, we described all message ID with the action. If SVP displays the message with ID number, please refer to the table to react.

18.4.2 Message ID format.

Message ID has a following format .



18.4.3 Note

(1) In this section, we use “%s” and “%d” strings in the messages.

These are the variable which will be determined in execution.

%s means a string variable.

%d means a numeric variable.

18.4.3. SVP Message ID Table

ID	Kind	Description
2001	I	Please retry operation. [Contents] SVP requires the retry operation for HRC &.HODM. [Action] Please retry the same operation for a few times.
2002	I	Logical Path between the MCU and the RCU is not active. [Contents] Logical Path does not exist between MCU and RCU [Action] Confirm the path status on RCU Status screen, and reestablish the paths with Edit Path.
2003	I	The pair status of the M-VOL is not valid. [Contents] The pair status is not permissible status for the operation. [Action] Renew and confirm the HRC & HODM screen. If M-VOL is permissible status please retry the operation.
2004	I	Invalid serial number or SSID of RCU, or RCU is not permissible type for HRC/HODM operation. [Contents] - Invalid serial number or SSID. - At HRC operation, RCU is not RAID200. - At HODM operation, RCU is not Controller80I-3 or Controller90I-3. [Action] Confirm serial number and SSID of RCU, and set correct value. Please refer to error code table more detail.
2005	I	Specified RCU has some HRC/HODM volume pair establish. [Contents] Delete RCU is rejected because some pair volume under the RCU. [Action] Do it after Delete Pair for all pairs under the RCU.
2006	W	Internal error occurred. [Contents] Internal error has occurred. [Action] See SSB LOG, and call technical support center to report them with the error code
2007	W	NVS status of MCU is not active. [Contents] MCU NVS status specified by HOST is not active. [Action] Confirm the NVS status of the MCU from HOST, set it on and retry. If it cannot set on, please call TSC.
2008	W	NVS status of RCU is not active. [Contents] RCU NVS status specified by HOST is not active. [Action] Confirm the NVS status of the RCU from HOST, set it on and retry. If it cannot set on, please call TSC.

ID	Kind	Description
2009	I	The logical paths between MCU and RCU are not established. [Contents] The logical paths between MCU and RCU are not established. [Action] Confirm the paths status between MCU and RCU.
2010	W	Pinned track exist on the M-VOL. [Contents] Pinned track exists on the M-VOL. [Action] Confirm pin track status of the M-VOL, and clear the volume of the pinned tracks.
2011	W	Pinned track exist on the R-VOL. [Contents] Pinned track exists on the R-VOL. [Action] Confirm pin track status of the R-VOL, and clear the volume of the pinned tracks.
2012	W	M-VOL is not useable. [Contents] M-VOL is not useable. For example. 1.Specified M-VOL is copying data(correction copy or drive copy). 2.Specified M-VOL is correction access condition. 3.Specified M-VOL is blocked. 4.Specified M-VOL is under maintenance. 5.Specified M-VOL is RD ONLY condition. [Action] If the M-VOL is under maintenance, retry the operation after the maintenance will be complete.
2013	I	The R-VOL is already used by other system. [Contents] The R-VOL is already used by other system. For example, 1.The R-VOL is already used by Dual Copy. 2.The R-VOL is already used by XRC. 3.The R-VOL is already used by PPRC or HRC. 4. The R-VOL is already used by Concurrent Copy. 5.The R-VOL is reserved. [Action] Confirm the R-VOL status of the RCU from HOST.
2014	I	HRC is not supported under the DKC emulation type of the M-VOL. [Contents] (The meaning is same as the message) [Action] Confirm the Device emulation type with Refer Configuration, and refer to HRC & HODM SECTION of the Maintenance Manual.

ID	Kind	Description
2015	I	Specified volume is not part of HRC/HODM pair. [Contents] Specified volume is not HRC/HODM pair. [Action] Please check the volume.
2016	I	HRC is not supported under the Controller emulation type of the MCU. [Contents] HRC is not supported under the Controller emulation type of the MCU. [Action] Confirm the Controller emulation type, and refer to HRC & HODM SECTION of the Maintenance Manual.
2017	I	Suspend operation is not valid for R-VOL. [Contents] Suspend mode is not for R-VOL [Action] Please confirm the suspend and retry.
2018	W	Invalid R-VOL. [Contents] Invalid R-VOL [Action] Please confirm the R-VOL status.
2019	W	Time out error has occurred. [Contents] Time out error has occurred. [Action] Please confirm the Controller status and retry.
2020	I	Invalid parameter. [Contents] Invalid parameter. [Action] Please check the inputted value and retry.
2021	I	Microcode does not support this function. [Contents] DKC-MAIN microprograms don't support this function. [Action] Please check the DKC-MAIN version.
2022	W	Communication error has occurred between SVP-SSVP. [Contents] Communication Error has occurred between SVP and SSVP. [Action] Please check the SSVP status and retry.
2023	I	Communication busy. Please retry later. [Contents] Communication busy. Please Retry later. [Action] Please wait for a moment and retry.
2024	I	There is no CU. [Contents] There is no CU [Action] Please confirm the CPU lamp.
2025	I	There is a same path. [Contents] There is a same path. [Action] Please check the inputted value.

ID	Kind	Description
2026	I	The number of path is over high limit. [Contents] The number of path is over high limit. [Action] Please check the operation.
2027	I	The path dose not exist. [Contents] The path dose not exist. [Action] Please check the inputted value.
2028	I	The number of path is under low limit. [Contents] The number of path is under low limit. [Action] Please check the operation.
2029	I	The CHA does not support HRC & HODM. [Contents] The CHA does not support HRC & HODM. [Action] Please replace the CHA and retry.
2030	W	There are other blocked parts. [Contents] SVP detected other blocked parts which are influenced to the HRC operation. [Action] After recovering their blocked parts, please retry the same operation.
2031	W	Maintenance object devices included HRC/HODM volumes. You should delete the HRC/HODM volume pair. [Contents] SVP detected the warning operation. [Action] Please select [OK] to stop the operation and end the HRC/HODM volume pair.
2032	W	By this operation, all connected HRC/HODM path(s) must be deleted. Please execute Delete RCU and retry this operation. [Contents] SVP detected the warning operation. [Action] Please select [OK] to stop the operation. You should delete RCU operation by decided with customers and retry again.
2033	W	This part includes the last logical path between MCU and RCU of HRC/HODM. You should delete or suspend the HRC/HODM volume pair. Do you want to stop this process? [Contents] SVP detected the warning operation. [Action] If [Yes], SVP will stop the process so that you should end or suspend the pair. If [No], SVP will continue the process, but you must be careful to operate.
2034	W	Maintenance object devices include HRC volumes. You should delete the HRC volume pair using SVP operation on MCU. [Contents] SVP detected the warning operation. [Action] Please select [OK] to stop the operation and delete the HRC volume pair.

ID	Kind	Description
2035	W	You should suspend the HRC/HODM volume pair using SVP operation on MCU. Do you want to stop this process? [Contents] SVP detected the warning operation. [Action] If [Yes], SVP will stop the process so that you should suspend the pair from M-VOL. If [No], SVP will continue the process, but you must be careful to operate.
2036	W	You should delete or suspend the HRC/HODM volume pair using SVP operation on MCU before hand. Do you want to stop this process? [Contents] SVP detected the warning operation. [Action] If [Yes], SVP will stop the process so that you should end or suspend the pair from M-VOL. If [No], SVP will continue the process, but you must be careful to operate.
2037	W	You should delete the logical path of HRC/HODM. Do you want to stop this process? [Contents] SVP detected the warning operation. [Action] If [Yes], SVP will stop the process so that you should end the pair from M-VOL. If [No], SVP will continue the process, but you must be careful to operate.
2038	W	This CHA may include the last logical path between MCU and RCU of HRC/HODM. Please check if there is a alternate path from MCU at first. Do you want to stop this process? [Contents] SVP detected the warning operation. [Action] If [Yes], SVP will stop the process so that you should end the path from MCU. If [No], SVP will continue the process, but you must be careful to operate. Note.1 Before you replace CHA, please vary off-line the path to the CHA which is connected from MCU. After replacement, please vary online the path. If you de-install CHA, please vary off-line the path to the CHA which is connected from MCU.
2039	E	Invalid number of Path. [Contents] The Specified number of paths do not cover 1 to 4. [Action] Confirm the number of paths you specified.
2040	E	Specified port of MCU is not RCP. [Contents] (The meaning is same as the message) [Action] Confirm the configuration of LCP/RCP. And specify correct Port or change the port to RCP.
2041	E	Invalid Destination Link Address. [Contents] The specified Logical Address is not 00 or 01. [Action] Confirm Logical Address and set correct Link Address.
2042	E	The specified logical path already exists. [Contents] The specified Link address and port are already used. [Action] Confirm all existing logical path address, and specify other Link address or RCP port.

ID	Kind	Description
2043	E	Invalid serial number, SSID or Link Address of RCU. [Contents] (The meaning is same as the message) [Action] Confirm serial number, SSID and Link Address of RCU, and set correct value.
2044	E	Too many RCUs. (Allowed Four RCUs) [Contents] 4 RCUs are already entered. [Action] Please check the inputted value and retry.
2045	E	Path establishing is not complete. [Contents] Path establishing was partly failed. [Action] Confirm the path connections between MCU and RCU. Then retry the operation.
2046	E	Path establishing is failed. [Contents] Path establishing was failed. [Action] Confirm the path connections between MCU and RCU. Then retry the operation.
2047	E	Edited path is rejected because the specified path is the last path of some HRC/HODM pair. [Contents] The operation causes no operable remote I/O path of some pair. [Action] Add another path, or delete all pairs on the RCU. Then retry the operation.
2048	E	Pending data on the port. [Contents] SVP detected the pending data on the port. [Action] Please retry again.
2049	E	Port exchange error has occurred. [Contents] SVP detected Port exchange error. [Action] Please replace the target CHA.
2050	E	Logical paths exist on the port. [Contents] SVP detected logical paths on the port. [Action] Please delete the path and retry.
2051	E	Unknown Error Code. [Contents] SVP detected unknown error code. [Action] Please call TSC.
2052	W	Are you sure you want to delete the RCU? [Contents] This message is to check your operation again. [Action] If you continue, please select [OK], if you stop the operation, please select [Cancel].
2053	W	Are you sure you want to delete the path? [Contents] This message is to check your operation again. [Action] If you continue, please select [OK], if you stop the operation, please select [Cancel].

ID	Kind	Description
2054	W	Are you sure you want to delete the volume pair? [Contents] This message is to check your operation again. [Action] If you continue, please select [OK],if you stop the operation, please select [Cancel].
2055	W	Are you sure you want to suspend the volume pair? [Contents] This message is to check your operation again. [Action] If you continue, please select [OK],if you stop the operation, please select [Cancel].
2056	W	Are you sure you want to erase data on the R-VOL? [Contents] This message is to check your operation again. [Action] If you continue, please select [OK],if you stop the operation, please select [Cancel].
2057	W	Are you sure you want to exchange LCP/RCP ports? Please confirm the concerned channel paths are varied off-line. [Contents] This message is to check your operation. [Action] Please vary off-line the concerned path. If you continue, please select [OK],if you stop the operation, please select [No].
2058	I	Please exchange channel cable connecting. [Contents] SVP promote you to exchange channel cable connecting. [Action] Please follow the message.
2059	W	HRC/HODM data copy in progress. Please wait for copy end or you should delete or suspend the HRC/HODM volume pair. Do you want to stop this process? [Contents] SVP detects the data copy by HRC/HODM. [Action] If [Yes] is selected, you should wait until copy is finished, or you should delete or suspend the pair after you negotiate with your customer. If [No] is selected, SVP will stop the process.
2060	W	The HRC/HODM volume pair must be suspended. No Maintenance operations are possible during HRC/HODM initial copy. Do you want to stop this process? [Contents] SVP detects the warning that HRC/HODM pair will be suspended or you could not operate more. [Action] If [Yes] is selected, SVP will stop the process, but if [No] is selected, SVP will continue the process.
2061	I	Operation is rejected because of maintenance in progress. [Contents] (The meaning is same as the message) [Action] Please exit other SVP applications(ONLINE or INSTALL if you executed) and retry.

ID	Kind	Description
2062	I	No more volume pair waiting for copy. [Contents] There is no waiting pair. [Action] Please check the pair status and retry.
2063	W	Communication error has occurred between Console-SVP. [Contents] Communication error has occurred. [Action] Please check the SVP status and connectivity status between Console-SVP.
2064	W	Are you sure you want to exchange RCP/LCP ports? The concerned paths should be deleted before the operation. [Contents] This message is to check your operation. [Action] If the concerned paths does not delete, please select [No] and delete it. If you continue , please [Yes].
2065	W	Invalid port type. [Contents] (The meaning is same as the message) [Action] Please check the port status and retry.
2066	I	Timer setting error has occurred. Wait for 30 seconds, then press OK. [Contents] (The meaning is same as the message) [Action] Please wait for 30 seconds and reboot SVP.
2067	I	Timer setting error has occurred. Wait for 30 seconds, then press OK. [Contents] (The meaning is same as the message) [Action] Please wait for 30 seconds. And select [OK] and reboot SVP.
2068	W	Specified number of Path is less than the Minimum Paths on RCU Option screen. [Contents] SVP rejected the number was less than the minimum. [Action] Please check the number of Paths
2069	W	Currently running microprogram version does not support the specified operation. [Contents] Microprograms do not support. [Action] Please check the microprograms version. If the version of microprograms supported HRC/HODM functions, please exchange LCP microprogram again. If the error code is 0x401b, please refer to "The installation procedure for HRC/HODM(HRC/HODM02-90)" to re-install.
2070	W	Specified volume may be online from HOST. [Contents] HODM cannot start because the volume is online from HOST. [Action] Please check if the volume is online. If online, please vary offline the path and retry.

ID	Kind	Description
2071	W	Warning!! R-VOL status change failed after M-VOL status change. Confirm R-VOL status. [Contents] (The meaning is same as the message) [Action] Please confirm the R-VOL status
2072	W	HODM volume pair cannot be terminated because migration copy is in progress and the specified volume may be online from HOST. [Contents] HODM could not start because the specified volume may be online from HOST. [Action] Please check the status if migration copy is in progress or the volume is online.
2073	W	You should add the alternate path, or if the Fence Level is Data/Status, you should delete the pair volume, or if the Fence Level is Never, you should suspend the pair volume. Do you want to stop this process? [Contents] Alternate path must be added or pair must be deleted or suspended. [Action] Please select [Yes] to stop operation and decide with your customer which you have to do, add HRC alternate path, or delete the pair if the fence level of the volume is Data/Status, suspend the pair if the fence level of the volume is never. And retry. If you select [No], SVP will continue the process.
2074	W	You should add the alternate path or delete the HRC pair. Do you want to stop this process? [Contents] Alternate path must be added or pair must be deleted. [Action] Please select [Yes] to stop the operation and add the alternate path or delete the pair by decided by customers. If you select [No], SVP will continue the process.
2075	W	You should add the alternate path. Do you want to stop this process? [Contents] Alternate path must be added. [Action] Please select [Yes] to stop the operation and add the alternate path by decided with customers.
2076	W	HODM data copy in progress. Please wait for copy end or you should add alternate path. Do you want to stop this process? [Contents] (The meaning is same as the message) [Action] Please select [Yes] to stop the operation. You should finish HODM copy or add alternate path by decided with customers and retry again. If you select [No], SVP will continue the process.
2077	W	You should add the alternate path or stop the I/O from Host. Do you want to stop this process? [Contents] (The meaning is same as the message) [Action] Please select [Yes] to stop the operation. Please decide with your customer which you have to do, add the HODM alternate path or stop the I/O from HOST. If you select [No], SVP will continue the process.

ID	Kind	Description
2078	W	<p>You should add the alternate path or delete the HODM pair. Do you want to stop this process?</p> <p>[Contents] (The meaning is same as the message)</p> <p>[Action] Please select [Yes] to stop the operation. You should delete the pair or add alternate path by decided with customers and retry again. If you select [No], SVP will continue the process.</p>
2079	W	<p>HRC/HODM data copy in progress. Please wait for copy end or you should delete or suspend the HRC/HODM volume pair using SVP operation on MCU. Do you want to stop this process?</p> <p>[Contents] (The meaning is same as the message)</p> <p>[Action] Please select [Yes] to stop the operation. You should wait until HRC/HODM is finished copy or you have to delete or suspend the HRC/HODM pair from MCU by decided with customers and retry again.</p>
2080	I	<p>Specified R-VOL is still online from HOST.</p> <p>[Contents] (The meaning is same as the message)</p> <p>[Action] Please check if the input number of R-VOL is correct. If not, input the correct R-VOL number. If the number is correct, please vary offline the concerned path from the host.</p>
2081	E	<p>Connection error occurred between Remote Console and Controller.</p> <p>[Contents] Remote Console could not connect to the DKC. SVP sometimes displays "Controller" as "Subsystem" but these are same meaning.</p> <p>[Action] Please check the connection and retry the same operation.</p>
2082	I	<p>Wait 10 minutes. Then please check if subsystem's status is OK and no SIM. After that press [OK].</p> <p>[Contents] Remote Console could not connect to the DKC.</p> <p>[Action] Please check the connection and retry the same operator.</p>
2083	I	<p>Can't execute specified function while HRC & HODM monitoring is active. If you want to execute the function, please stop the monitoring function at first and retry again.</p> <p>[Contents] Remote Console could not connect to the DKC.</p> <p>[Action] Please check the connection and retry the same operator.</p>
2084	W	<p>The specified number of Path is less than the Minimum number of Paths on RCU Option screen.</p> <p>[Contents] The number of Paths is less than the Minimum number of Paths on RCU option screen.</p> <p>[Action] Confirm the number of Minimum Paths with RCU Option screen and retry the operation after establishing the number of paths more than Minimum Paths.</p>

ID	Kind	Description
2085	W	The specified number of Path is less than the Minimum number of Paths on RCU Option screen as a result of communication error between MCU and RCU. [Contents] The number of Paths is less than the Minimum number of Paths on RCU option screen as a result of communication error between MCU and RCU. [Action] Confirm the path status on RCU Status screen, and reestablish the paths with Edit Path.
2086	W	The path could not be deleted due to communication error between MCU and RCU. [Contents] The path couldn't be deleted due to the communication error between MCU and RCU or the blockade of the CHA. [Action] Confirm the CHA status with "STATUS" on the MCU. If the CHA is blockaded, replace it by a new one. Then retry the operation.
2087	W	Parameter specified by HRC operation is invalid. [Contents] Parameter specified by HRC operation is invalid. For example, the R-VOL which is specified is already used as the R-VOL of another HRC pair. [Action] Please establish the correct parameter and retry the operation.
2088	W	Parameter specified by HODM operation is invalid. [Contents] Parameter specified by HODM operation is invalid. For example, the R-VOL which is specified is already used as the R-VOL of another HODM pair. [Action] Please establish the correct parameter and retry the operation.
2089	W	The pair status of the R-VOL is not valid. [Contents] The pair status is not permissible status for the operation. [Action] Renew and confirm the HRC & HODM screen. If R-VOL is permissible status please retry the operation.
2090	W	HODM is not supported under the Controller emulation type of the MCU. [Contents] HODM is not supported under the Controller emulation type of the MCU. [Action] Confirm the Controller emulation type and refer to HRC & HODM SECTION of the Maintenance Manual.
2091	W	HRC is not supported under the Controller type of the RCU. [Contents] HRC is not supported under the Controller emulation type of the RCU. [Action] Confirm the Controller emulation type, and refer to HRC & HODM SECTION of the Maintenance Manual.
2092	W	HODM is not supported under the Controller type of the RCU. [Contents] HODM is not supported under the Controller emulation type of the RCU. [Action] Confirm the Controller emulation type and refer to HRC & HODM SECTION of the Maintenance Manual.
2093	W	Invalid serial number or SSID of MCU. [Contents] Invalid serial number or SSID of MCU [Action] Confirm the serial number or SSID of MCU. Retry with correct parameter.
2094	W	Invalid serial number or SSID of RCU. [Contents] Invalid serial number or SSID of RCU [Action] Confirm the serial number or SSID of RCU. Retry with correct parameter.

ID	Kind	Description
2095	W	Subsystem Cache status of MCU is not active. [Contents] Inactive Subsystem Cache status on MCU. [Action] Confirm the Subsystem Cache status of MCU from HOST. If it is off, set it on and retry. If it cannot set on, call TSC.
2096	W	One side of Cache on MCU is blocked. [Contents] Invalid Cache status on MCU. [Action] Check the Cache of MCU and recover it. Then retry the operation.
2097	W	Unexpected error occurred on MCU. [Contents] Unexpected error occurred on MCU. [Action] Call TSC.
2098	W	Subsystem Cache status of RCU is not active. [Contents] Inactive Subsystem Cache status on RCU. [Action] Confirm the Subsystem Cache status of RCU from HOST. If it is off, set it on and retry. If it cannot set on, call TSC.
2099	W	Track Format of M-VOL and R-VOL do not match. [Contents] Track Format of M-VOL and R-VOL do not match. [Action] Confirm the Device type of the specified M-VOL and R-VOL.
2100	W	Combinations of the device type of M-VOL with R-VOL is not supported. [Contents] Combinations of the device type of M-VOL with R-VOL is not supported. [Action] Confirm the Device type of the specified M-VOL and R-VOL.
2101	W	Device Cache status of R-VOL is not active. [Contents] Inactive the Device Cache status of R-VOL. [Action] Confirm the Device Cache status of R-VOL from HOST. If it is off, set it on and retry. If it cannot set on, call TSC.
2102	W	DFW status of R-VOL is not active. [Contents] Inactive the DFW status of R-VOL. [Action] Confirm the DFW status of R-VOL from HOST. If it is off, set it on and retry. If it cannot set on, call TSC.
2103	W	R-VOL is not usable.w [Contents] Specified R-VOL is not usable. For example 1.Specified R-VOL is blocked. 2.Specified R-VOL is under maintenance. 3.Specified R-VOL is copying data(collection copy or drive copy). 4.Specified R-VOL is failed. 5.Specified R-VOL is CC=3 condition. 6.Specified R-VOL is intervention required. 7.Specified R-VOL is correction access condition. 8.Permanent I/O Error occurred on the R-VOL." 9.Specified R-VOL is READ ONLY condition. [Action] Confirm the status of the specified R-VOL from HOST or Status screen or check the SSB of R-VOL.
2104	W	HODM is not supported under the Device emulation type of the M-VOL. [Contents] HODM is not supported under the Device emulation type of the M-VOL. [Action] Confirm the Device emulation type of the specified M-VOL and refer to HRC & HODM SECTION of the Maintenance Manual.

ID	Kind	Description
2105	W	HRC is not supported under the Device emulation type of the R-VOL. [Contents] HRC is not supported under the Device emulation type of the R-VOL. [Action] Confirm the Device emulation type of the specified R-VOL with Refer Configuration , and refer to HRC & HODM SECTION of the Maintenance Manual.
2106	W	HODM is not supported under the Device emulation type of the R-VOL. [Contents] HODM is not supported under the Device emulation type of the R-VOL. [Action] Confirm the Device emulation type of the specified R-VOL and refer to HRC & HODM SECTION of the Maintenance Manual.
2107	W	The RCU is still in HODM condition. [Contents] The RCU containing the R-VOL specified "ADD HODM PAIR " is using as RCU of HODM. [Action] Verify the operation whether the RCU is using as HODM. Then retry the operation after "Del RCU" once.
2108	W	The RCU is still in HRC condition. [Contents] The RCU containing the R-VOL specified "ADD HRC PAIR " is using as RCU of HRC. [Action] Verify the operation whether the RCU is using as HRC. Then retry the operation after "Del RCU" once.
2109	W	Connection error occurred between Remote Console and Controller. [Contents] Remote Console could not connect to Controller. [Action] Please check
2110	W	Please confirm the specified R-VOLs are varied off-line. [Contents] When entering HODM pair, SVP guides an operator to confirm the specified R-VOLs are varied off-line. [Action] If you finish confirming the specified R-VOLs are varied off-line, please select "OK". If not, please select "Cancel".
2111	W	The CHA-PCB type was not available so that SVP could not restore. [Contents] SVP detected the CHA-PCB type was not available. [Action] If [OK], SVP will finish this process. Please prepare the same PCB before replacement or the same PCB as you define. And retry again.
2112	W	The CHA-PCB does not support HRC/HODM so that SVP could not restore. Please check the PCB type and retry. [Contents] SVP could not recover because of the different type of CHA-PCB. [Action] There are two cases that the port is set as RCP or the PCB does not support HRC. Please check the PCB. If [OK], SVP will finish this process. Please prepare the same PCB before replacement or the same PCB as you define. And retry again.
2113	W	SVP could not recover. SVP has already set RCP port, but the PCB does not support HRC/HODM. [Contents] SVP could not recover. [Action] If [OK], SVP will finish this process. Please prepare the same PCB before replacement or the same PCB as you define. And retry again.
2114	I	The target PCB does not support HRC/HODM. Please replace the PCB which supports HRC/HODM necessary. [Contents] SVP detected the PCB does not support HRC/HODM. [Action] Please replace to the PCB which supports HRC/HODM.

ID	Kind	Description
2115	W	There are no more paths than the Minimum Paths on RCU option screen. [Contents] The number of Paths is less than the Minimum number of Paths on RCU option screen as a result of communication error between MCU and RCU. [Action] Confirm the path status on RCU Status screen, and reestablish the paths with Edit Path.
2116	I	Specified volume is not part of HRC/HODM pair(Not in Duplex Avail, Pending Duplex, Suspend Duplex state). [Contents] Specified volume is not HRC/HODM pair. [Action] Please check the volume.
2117	W	WARNING:Destination volume of specified volume pair may contain some inconsistency because volume copy is not completed yet. Full volume initialization is required before re-using it. Own Dev:0xXX S/N:XXXXX SSID:0xXXXX Pair Dev:0xXX if you want to delete pair, press OK. [Contents] Please follow the message. [Action] Please note the volume pair which are displayed and finish this operation. After, please negotiate your customer to initialize the volume which might have a illegal contents.
2118	W	This subsystem is now processing by HRC or HODM. It is necessary to execute \"Delete RCU\" because the HRC or HODM cannot control their status. Do you want to stop this process? [Contents] This subsystem is used by HRC & HODM. [Action] If [Yes], SVP finishes this process. Please contact your customer to delete RCU and retry. If [No], SVP continues this process.
2119	W	This subsystem is now processing by HRC. It is necessary to execute \"Delete RCU\" from MCU side because the HRC cannot control the status. Do you want to stop this process? [Contents] This subsystem is used by HRC. [Action] If [Yes], SVP finishes this process. Please contact your customer to delete RCU from MCU side and retry. If [No], SVP continues this process.
2120	W	The Cache on MCU is automatically recovering now. Please wait a few minutes then retry again. [Contents] The Cache on MCU is automatically recovering now. [Action] If [OK], SVP finishes this process so that please wait several minutes and retry again. If [No], SVP continue this process.
2121	W	R-VOL option change operation failed so that only M-VOL option was modified, because RCU side did not support a fence level displaying function. [Contents] R-VOL option change operation failed because the RCU side does not support to display fence level. SVP changed only M-VOL option. [Action] Please select [OK].
2122	W	Pair option change operation failed because communication error has occurred or R-VOL status is invalid. [Contents] SVP detected the communication error or R-VOL status invalid. [Action] Please check the status.
2123	W	Pair option change was refused because M-VOL is suspend. [Contents] SVP detected M-VOL was suspend. [Action]

ID	Kind	Description
2124	W	Do you want to continue? [Contents] SVP detected some error when a set of pairs was entered/deleted/recovered/changed options. [Action] If [Yes], SVP continues this operation. If [No], SVP finishes.
2125	I	Multi platform feature has been already installed in MCU. [Contents] SVP detected Multi platform feature has been installed in MCU. [Action] Please check the configuration of this MCU machine.
2126	W	Multi platform feature has been already installed in RCU. [Contents] SVP detected Multi platform feature has been installed in RCU. [Action] Please check the configuration of the RCU machine.
2127	W	Multi platform feature has been already installed in subsystem. [Contents] SVP detected Multi platform feature has been installed. [Action] Please check the configuration of this machine.
2128	W	Warning!! Through this operation, M-VOL status will be changed to Simplex mode forcibly, but R-VOL status will not be changed. If you do this operation, please change the R-VOL status to Simplex mode. [Contents] SVP detected the pair which was forced delete was HRC and the mode was other than Simplex. [Action] Please select [OK] and change the R-VOL to Simplex.
2129	W	Warning!! Through this operation, M-VOL status will be changed to Simplex mode even if the M-VOL is online to the host. [Contents] SVP detected the pair which was forced delete was HODM and the status was other than waiting erase. [Action] Please contact your customer to change the mode to Simplex. After, please select [OK].
2130	E	Illegal microprogram version was included. Please execute microprograms exchange. [Contents] SVP detected illegal version of microprograms. [Action] Please execute microprograms exchange.
2131	E	In this microprogram version, you can not define both HRC/HODM and SCSI configuration simultaneously. Please define either HRC/HODM or SCSI configuration. [Contents] This microprogram does not support to set HRC/HODM and Multi platform feature together. [Action] Please set either HRC/HODM or Multi platform.
2132	E	The target has connected SCSI channel port. Please delete the connected SCSI Path at first. [Contents] SVP detected that the target has connected SCSI channel port. [Action] Please erase SCSI path set and de-install the target.
2133	E	Valid RCP port does not exist. [Contents] There is no valid RCP Port. [Action] Please select [OK] to stop this process and check the port.

ID	Kind	Description
2134	E	Specified volume contain some R-VOLs. You can change parameters for only M-VOLs, not for R-VOLs. [Contents] When you change the parameters against suspend pair, the specified volume contain some R-VOLs so that SVP could not change parameters against R-VOL. [Action] Please select [OK] to stop this process. SVP will change the parameters against M-VOLs only.
2135	I	Please confirm you have already shutdown concerned connecting SCSI host(s) or switched to the alternate SCSI path(s). Do you want to continue this process? [Contents] You should shutdown concerned connecting SCSI host(s) or switch to the alternate SCSI channel path(s). [Action] If you do not confirm yet, please select [No] to stop the process. If you already has confirmed, please select [Yes] to continue.
2136	I	Multi platform feature has been already installed in MCU. [Contents] Multi platform feature has been already installed in MCU. [Action] HRC or HODM function is exclusive to Multi platform feature. Please de-install CHS PCB(s) in MCU before HRC or HODM function is performed.
2137	I	Multi platform feature has been already installed in RCU. [Contents] Multi platform feature has been already installed in RCU. [Action] HRC or HODM function is exclusive to Multi platform feature. Please de-install CHS PCB(s) in RCU before HRC or HODM function is performed.
2138	W	Not enough memory. Please exit other applications and retry again. [Contents] SVP detected a lack of memory. [Action] If you execute other applications, please exit them and retry. Please select [OK] to stop the process.
2139	E	Previously failed or blocked parts should be serviced first. [Contents] SVP detected the blocked parts in the controllers. [Action] Please select [OK] to stop the process and recover the blocked parts.
2140	I	SCSI path definition was completed. [Contents] SVP finished the definition. [Action] Please confirm the message and select [OK].After, please reboot the HOST and check the connectivity.
2141	E	The SCSI path(s) could not be changed. Please retry again. [Contents] SVP failed to define the SCSI paths. [Action] Please retry again or call TSC.
2142	E	Port restoration was failed. [Contents] SVP failed to restore the port. [Action] Please select [OK] to stop the process, and call TSC.
2143	W	This controller does not equip SCSI device. [Contents] SVP detected the controller does not equip SCSI device. [Action] Please select [OK] to stop the process and check the controller to equip SCSI device.

ID	Kind	Description
2144	W	It is possible that host I/O of following port(s) does not stop. Please shutdown concerned connecting SCSI host(s) or change port one by one. PORT#:%s %s = CL1-x,x,x,x (x = A - H), CL2-x,x,x,x (x = A - H) [Contents] SVP detected the host I/O. [Action] Please select [OK] to stop the process and stop the HOST's I/O. Please set other ports and retry again.
2145	E	The following ports could not be changed. Please check those PORTs status by STATUS. PORT#:%s %s = CL1-x,x,x,x (x = A - H), CL2-x,x,x,x (x = A - H) [Contents] SVP could not change the port. If the host I/O of the ports does not finish completely, sometimes error will be occurred. [Action] Please select [OK] to stop the process and check the target port status by STATUS and contents of setting data. If the port is blocked, please replace the target PCB. If the port is normal, please finish host I/O of the ports and set to the same port again.
2146	I	Please confirm you have already varied off the concerned channel path(s). Please confirm you have already shutdown concerned connecting SCSI host(s) or switched to the alternate SCSI channel path(s). Do you want to replace the "%s?" [Contents] This is a confirmation message. Please check the concerned connecting SCSI host(s). [Action] If you confirm and the replacing parts is correct, please select [Yes] to continue. If you could not confirm, please select [No] to stop the process.
2147	I	Please confirm you have already shutdown concerned connecting SCSI host(s) or switched to the alternate SCSI channel path(s). Do you want to replace the "%s?" [Contents] This is a confirmation message. Please check the concerned connecting SCSI host(s). [Action] If you confirm and the replacing parts is correct, please select [Yes] to continue. If you could not confirm, please select [No] to stop the process.
2148	I	Please confirm you have already varied off the concerned channel path(s). Please confirm you have already shutdown concerned connecting SCSI host(s) or switched to the alternate SCSI channel path(s). Do you want to block Cluster-%d? [Contents] This is a confirmation message. Please check the concerned channel path(s) and SCSI hosts(s). [Action] If you confirm and the target blocking cluster is correct, please select [Yes] to continue. If you could not confirm, please select [No] to stop this process.
2149	I	Please confirm you have already shutdown concerned connecting SCSI host(s) or switched to the alternate SCSI channel path(s). Do you want to block Cluster-%D? [Contents] This is a confirmation message. Please check the concerned connecting SCSI host(s). [Action] If you confirm and the target blocking cluster is correct, please select [Yes] to continue. If you could not confirm, please select [No] to stop this process.

ID	Kind	Description
2150	I	<p>This operation will block Cluster-%d before recovery. Please confirm you have already varied off the concerned channel path(s). Please confirm you have already shutdown concerned connecting SCSI host(s) or switched to the alternate SCSI channel path(s). Do you want to continue?</p> <p>[Contents] This is a confirmation message. Please check the channel path(s).</p> <p>[Action] If you confirm that the target cluster will be blocked, please select [OK] to continue. If you could not confirm, please select [Cancel] to stop this process.</p>
2151	I	<p>The operation will block Cluster-%d before recovery. Please confirm you have already shutdown concerned connecting SCSI host(s) or switched to the alternate SCSI channel path(s). Do you want to continue?</p> <p>[Contents] This is a confirmation message. Please check the concerned connecting SCSI host(s).</p> <p>[Action] If you confirm that the target cluster will be blocked, please select [Yes] to continue. If you could not confirm, please select [No] to stop this process.</p>
2152	I	<p>The replacement of %s has finished and Cluster is enabled. The concerned channel path(s) and SCSI channel path(s) are available. Please vary the path(s) on.</p> <p>[Contents] The replacement process has finished so that please follow as this message.</p> <p>[Action] After varying the path(s) on, please select [OK].</p>
2153	I	<p>The replacement of %s has finished and Cluster is enabled. The concerned SCSI channel path(s) are available.</p> <p>[Contents] The replacement has finished.</p> <p>[Action] Please select [OK] to finish this process.</p>
2154	I	<p>The restore has finished. Cluster is enabled. The concerned channel path(s) and SCSI channel path(s) are available. Please vary the path(s) on.</p> <p>[Contents] The restore has finished. Please follow as this message.</p> <p>[Action] After varying the path(s) on, please select [OK].</p>
2155	I	<p>The restore has finished. Cluster is enabled. The concerned SCSI channel path(s) are available.</p> <p>[Contents] The restore has finished.</p> <p>[Action] Please select [OK] to finish this process.</p>
2156	E	<p>Subsystem configuration data was not changed.</p> <p>[Contents] The program could not change the data because it detected some error in the subsystem.</p> <p>[Action] Please select [OK] to finish this process. The subsystem might have some blocking parts so that you should call technical support center.</p>
2157	E	<p>The following ports could not be changed. Please check those ports. Port#:%s</p> <p>[Contents] The program could not change those ports.</p> <p>[Action] Please select [OK] to finish this process. And retry again. If the same message is displayed, you may call technical support center.</p>

ID	Kind	Description
2158	E	The SCSI path(s) could not be changed. [Contents] The program could not change the SCSI path(s). [Action] Please select [OK] to finish this process. Before displaying this message, another message may be displayed. Please follow this message.
2159	W	The number of minimum paths is more than the number of normal paths. (Error Code = %x) [Contents] Setting the number of minimum paths of the RCU Option Setting operation is rejected because the number of minimum paths is more than the number of normal paths. [Action] Please do the operation according to the Error Code. (1) Error Code = 100c : Set the number of minimum paths after adding normal paths so that the number of minimum paths won't be more than the number of normal paths. (2) Error Code = 100d : Delete paths after adding normal paths or decreasing the number of minimum paths so that the number of minimum paths won't be more than the number of normal paths.
2160	W	Invalid Logical Addresses are specified. (Error Code = %x) [Contents] The Add RCU operation or the Edit Path operation is rejected because some Logical Addresses of added paths are invalid. [Action] 1. Case of Add RCU operation Specify the same Logical Address. 2. Case of Edit Path operation Specify the same Logical Address as existing paths. (Refer to the Edit Path Screen).
2161	W	The existing logical addresses are not equal. (Error Code = %x) [Contents] The edit Path operation is rejected because Logical Addresses of existing paths are not equal. [Action] Execute the Delete RCU Operation and the Add RCU operation again. You must specify the same Logical Address.
2162	E	Remote Console detected internal error. [Contents] The program detected the internal error. [Action] Please select [OK] to stop the process. And retry again. If the message is displayed, please restart the same programs after closing it, or you should reboot this PC.
2163	W	The target controller is being maintained now. After maintaing, please retry again. [Contents] The target controller might been maintained. For example, (1) "ONLINE" program is runnig. (2) "INSTALL" program is running. (3) "Diag" program is running. [Action] Please select [OK] to stop this process. After finishing maintained, please retry again.
2164	I	The target controller does not support this function. [Contents] The program detected that the target controller did not support this function. [Action] Please select [OK] to stop this process. If you need this function, please call technical support center.

ID	Kind	Description
2165	W	<p>WARNING!! If you continue this operation without stopping I/O, you may lost your data.</p> <p>[Contents] Please be careful to do this operation.</p> <p>[Action] Please confirm that the concerned SCSI host(s) is shutdown or there is no I/O from the host(s). After this message, the program continue processing this function. But if some error will be detected, the subsystem will occurred some fatal error.</p> <p>Therefore, please be carefur to continue the process and select [OK].</p>
2166	W	<p>The M-VOL is already used by XRC. (Error Code = %x)</p> <p>[Contents] The M-VOL is already usec by XRC.</p> <p>[Action] Confirm the M-VOL XRC status from HOST.</p>
2167	W	<p>As the result of this operation, you will not be able to re-start Erase R-VOL operation.</p> <p>[Contents] As the result of this operation, you will not be able to re-start Erase R-VOL operation.</p> <p>[Action] If it is no problem not to be able to restart Erase R-VOL operation, please select [OK]. If not, please select [Cancel].</p>
2168	W	<p>As the result of this operation, you will not be able to re-start Erase R-VOL operation. To delete the pair forcibly, please try again with 'Force' option.</p> <p>[Contents] As the result of this operation, you will not be able to re-start Erase R-VOL operation. To delete the pair forcibly, please try again with 'Force' option.</p> <p>[Action] Delete the pair with 'Force' option.</p>
2169	E	<p>Invalid parameter.</p> <p>[Contents] The parameter's value was invalid.</p> <p>[Action] Call technical support center.</p>
2170	I	<p>Are you sure you want to de-install the function?</p> <p>[Contents] This operation de-install the function. If the function is running, it will be stopped by this operation.</p> <p>[Action] If you want to de-install, press [OK]. If you don't press [Cancel].</p>
2171	I	<p>This function is not supported.</p> <p>[Contents] This function is not supported.</p> <p>[Action] If you want to install the function, call technical support center.</p>
2172	I	<p>This option needs special FD. Please insert the FD.</p> <p>[Contents] This option needs special FD.</p> <p>[Action] If you have a special FD, please insert it and press [OK]. If you don't, press [Cancel].</p>
2173	I	<p>Invalid FD.</p> <p>[Contents] Inserted FD is not available. This message will be displayed in the Option Install (HMBR) under the following conditions.</p> <p>(a) The FD is not for Option Installation.</p> <p>(b) The FD is for Option Installation, but the FD has already used to install into another Controller.</p> <p>(c) The FD has Write Protect.</p> <p>[Action] Please check the inserted FD. And retry again by using available Fd.</p>

ID	Kind	Description
2174	E	Combination of the controller type of MCU with RCU is not supported. (Error Code = %04x) [Contents] Combination of the controller type of MCU with RCU is not supported. [Action] Confirm the controller type of the specified MCU and RCU.
2175	E	Internal error has occurred. [Contents] Internal error has occurred. Or system resource is not enough. [Action] Please terminate another needless application, and retry again. Or reboot remote console.
2176	W	File I/O error has occurred. (File = %s) [Contents] File I/O error has occurred. [Action] Please retry again. If the error occurs after rebooting remote console, re-install all remote console program products.
2177	W	There are too many products to list all of them. [Contents] There are too many remote console products to list all the information. [Action] Please retry again. If the error occurs after rebooting remote console, re-install all remote console program products.
2178	W	There are no products. [Contents] There are no remote console products. [Action] Please retry again. If the error occurs after rebooting remote console, re-install all remote console program products.
2179	W	If Microprogram is exchanged, some function in action will end abnormally. Do you want to continue? %s [Contents] This microprogram does not support some functions. After microprogram exchange, some function in action will end abnormally. [Action] At first, you should note Bitmap in this message and select [Cancel] to stop microprogram exchange. Next, please refer to the Function Bit Map Table in M-FC section. Bitmap in message corresponds the table so you should recognize function which is described about bit on item. Please do the corresponding action in this table. After all, please retry microprogram exchange again.
2180	E	File I/O error has occurred. [Contents] File I/O error has occurred. [Action] Please check if the floppy disk is not write protect. If it is so, release the write protect and retry again.
2181	W	Warning!! Initial copy mode 'None' is selected for some volume pairs. Are you sure that the M-VOL and the R-VOL of these pairs are already synchronized? [Contents] Initial copy mode 'None' is selected for some volume pairs. Confirm that the M-VOL and the R-VOL of these pairs are already synchronized. [Action] Confirm the M-VOL and the R-VOL of specified pairs are already synchronized.
2182	I	%s is already normal, so restoration has not executed. [Contents] Selected Bus is already normal, so restoration has not executed. [Action] Nothing

ID	Kind	Description
2183	E	Configuration file read error has occurred. [Contents] Error has occurred on reading configuration form SVP file. [Action] Retry maintenance, but same error has occurred, reboot SVP.
2184	W	The unused FD is inserted though the option is installed in this controller. If you select [OK] with checking 'ON' in the next window, the FD will be used only for this controller. [Contents] The unused FD is inserted though there will be used FD because the function is installed. If you select [OK] with checking 'ON' in the next window, the FD will be used only for this controller. [Action] Please look for the used FD this controller, and use it. If you need to continue the operation, please select [OK].
2185	I	Please remove the special FD. [Contents] Please remove the special FD from SVP. [Action] Please remove the FD, and select [OK].