



Hitachi HiCommand™ Device Manager

Error Codes

© 2003 Hitachi Data Systems Corporation, ALL RIGHTS RESERVED

Notice: No part of this publication may be reproduced or transmitted in any form or by any electronic or mechanical means, including photocopying and recording, or stored in a database or retrieval system for any purpose, without the express written permission of Hitachi Data Systems Corporation.

Hitachi Data Systems reserves the right to make changes to this document at any time without notice and assumes no responsibility for its use. Hitachi Data Systems products or services can only be ordered under the terms and conditions of Hitachi Data Systems' applicable agreements, including license agreements. All of the features described in this document may not be currently available. Refer to the most recent product announcement or contact your local Hitachi Data Systems sales office for information on feature and product availability.

This document contains the most current information available at the time of publication. When new and/or revised information becomes available, this entire document will be updated and distributed to all registered users.

Trademarks

Hitachi Data Systems and the Hitachi Data Systems design mark are registered trademarks service marks of Hitachi, Ltd.

HiCommand, Hitachi Freedom Storage, Lightning 9900, Thunder 9500, and Thunder 9200 are trademarks of Hitachi Data Systems Corporation.

ESCON is a registered trademark of International Business Machines Corporation.

Windows and Windows NT are registered trademarks of Microsoft Corporation.

Java, Solaris, StorEdge, and Sun are trademarks or registered trademarks of Sun Microsystems, Inc.

UNIX is a registered trademark of The Open Group in the United States and other countries.

All other brand or product names are or may be registered trademarks, trademarks or service marks of and are used to identify products or services of their respective owners.

Notice of Export Controls

Export of technical data contained in this document may require an export license from the United States government and/or the government of Japan. Contact the Hitachi Data Systems Legal Department for any export compliance questions.

Document Revision Level

Revision	Date	Description
MK-92HC016-0	November 2002	Initial Release
MK-92HC016-1	May 2003	Revision 1, supersedes and replaces MK-92HC016-0

Source Documents for this Revision

- MK-92HC016-1a, MK-92HC016-1c (Hitachi SSD reviews of this document).
- MK-92HC016-1b (HDS review of this document).

Changes in this Revision

- Updated error messages and descriptions for HiCommand Device Manager 2.3 throughout tables (Table 1.3 - Table 1.10).
- Added the following new error codes (Table 1.3 - Table 1.10): 100-501, 604, 800-818, 819, 1012-1016, 3141-3143, 5026, 5312, 5393, 5418, 5419, 5540, 5610, 5714-5729, 6321, 7115, 7167-7180, 7182-7188, 7441-7821, 7822-7843, 10136-10154.
- Added a new table of CIM/WBEM errors (new Table 1.11, error codes 9000-9999).
- Added a new section on storage subsystem error messages displayed by HiCommand™ Device Manager (new section 1.3; new Table 1.13, new Table 1.14, new Table 1.15).
- Deleted error codes related to E-NAS, NAS, and NAS Manager (805, 806, 813, 814, 818, 7169, 7173, 3,1145-31151).

Referenced Documents

- *HiCommand™ Device Manager Web Client User's Guide*, MK-91HC001
HiCommand™ Device Manager Server Installation and Configuration Guide, MK-91HC002
HiCommand™ Device Manager Command Line Interface (CLI) User's Guide, MK-91HC007
- *Hitachi Lightning 9900™ V Series User and Reference Guide*, MK-92RD100
- *Hitachi Lightning 9900™ User and Reference Guide*, MK-90RD008
- *Hitachi Thunder 9500™ V Series User and Reference Guide*, MK-92DF601
- *Hitachi Thunder 9200™ User and Reference Guide*, MK-90DF504
- *Sun™ StorEdge™ T3 Disk Tray Configuration Guide*, 806-4210

Preface

This document presents a list of the error codes and error messages for the HiCommand™ Device Manager software and provides recommended actions for the error conditions. This document assumes that:

- The user has a background in data processing and understands peripheral storage device subsystems and their basic functions.
- The user is familiar with the HiCommand™ Device Manager software product.
- The user is familiar with the operating system (OS) which hosts the HiCommand™ Device Manager client software (e.g., Windows NT® OS, Solaris™ OS).

Note: For troubleshooting information on HiCommand™ Device Manager client operations, please refer to the applicable user's guide: *HiCommand™ Device Manager Web Client User's Guide* (MK-91HC001), and/or *HiCommand™ Device Manager Command Line Interface (CLI) User's Guide* (MK-91HC007).

Note: For troubleshooting information on HiCommand™ Device Manager Server operations, please refer to the *HiCommand™ Device Manager Server Installation and Configuration Guide* (MK-91HC002).

Note: For troubleshooting information on disk array subsystem operations, please refer to the applicable document for the array (e.g., *Hitachi Lightning 9900™ V Series User and Reference Guide*, MK-92RD100).

Note: The use of HiCommand™ Device Manager and all other Hitachi Data Systems products is governed by the terms of your license agreement(s) with Hitachi Data Systems.

Software Revision Level

This document revision applies to HiCommand™ Device Manager version 2.3

COMMENTS

Please send us your comments on this document: doc.comments@hds.com.

Make sure to include the document title, number, and revision.
Please refer to specific page(s) and paragraph(s) whenever possible.
(All comments become the property of Hitachi Data Systems Corporation.)

Thank you!

Contents

Chapter 1	HiCommand™ Device Manager Error Codes	1
1.1	Overview of HiCommand™ Device Manager Error Messages.....	1
1.2	HiCommand™ Device Manager Error Codes	3
1.3	Storage Subsystem Error Messages.....	37
1.3.1	Lightning 9900™ V Series Messages	37
1.3.2	Lightning 9900™ Messages.....	45
1.3.3	Hitachi Thunder 9500V and 9200 Messages.....	57
1.4	Calling the Hitachi Data Systems Support Center	69
	Acronyms and Abbreviations.....	71

List of Figures

Figure 1.1	Sample Error Message	1
------------	----------------------------	---

List of Tables

Table 1.1	Error Levels	1
Table 1.2	Error Code Ranges	2
Table 1.3	Error Codes 0-999: Server Errors	3
Table 1.4	Error Codes 1000-1999: Translation Layer (HTTP, XML Format) Errors	6
Table 1.5	Error Codes 2000-2999: Security Layer Errors (User Authentication, etc.)	7
Table 1.6	Error Codes 3000-3999: Database Errors	8
Table 1.7	Error Codes 4000-4999: Network Errors	9
Table 1.8	Error Codes 5000-5999: Transport Errors	10
Table 1.9	Error Codes 6000-6999: Storage Array Errors (SNMP, etc.)	15
Table 1.10	Error Codes 7000-8999: Command (Agent) Errors	18
Table 1.11	Error Codes 9000-9999: CIM/WBEM Errors	29
Table 1.12	Error Codes 10000-19999: Web Client Errors	30
Table 1.13	Lightning 9900V Messages	37
Table 1.14	Lightning 9900™ Messages	45
Table 1.15	Hitachi Thunder 9500V and 9200 Messages	57

Chapter 1 HiCommand™ Device Manager Error Codes

1.1 Overview of HiCommand™ Device Manager Error Messages

HiCommand™ Device Manager displays an error message when an error condition occurs (see Figure 1.1). HiCommand™ Device Manager sends all error notifications, including Server errors, to the HiCommand™ Device Manager client (e.g., Web Client, CLI, third-party application).

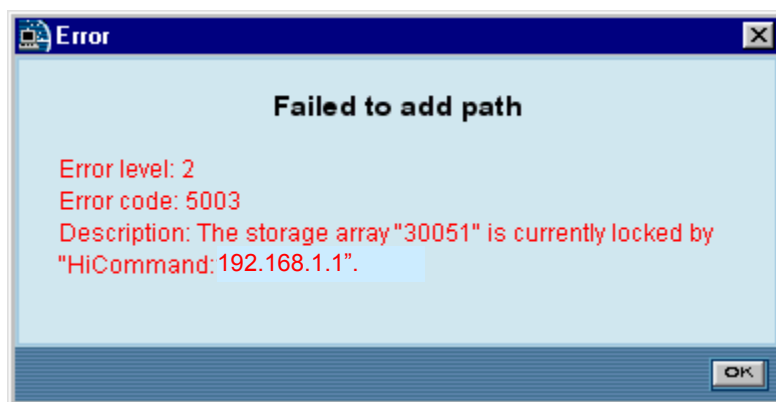


Figure 1.1 Sample Error Message

The error message includes:

- **Error level:** The error level indicates the severity of the error (see Table 1.1).
- **Error code:** The error code range indicates the type of error (see Table 1.2). The error code indicates the specific error condition (see error code tables in section 1.2).
- **Description:** The error description provides information on the error condition.

Table 1.1 Error Levels

Error Level	Description
1	Informational
2	Warning
3	Error
4	Fatal error

Table 1.2 Error Code Ranges

Error Code Range	Description
0-999	HiCommand™ Device Manager Server (SRV) errors.
1000-1999	Translation (XLTN) errors (HTTP, XML format).
2000-2999	Security (SEC) layer errors (user authentication, etc.).
3000-3999	Database (DB) errors.
4000-4999	Network (NET) errors.
5000-5999	Transport (XPRT) errors.
6000-6999	Storage array (STG) errors (SNMP, etc.).
7000-9999	Command (Agent) (AGNT) errors.
10000-19999	Web Client errors.

1.2 HiCommand™ Device Manager Error Codes

Table 1.3—Table 1.12 list the HiCommand™ Device Manager error messages displayed at the client and provide recommended action for resolving the conditions. The error messages are listed in numerical order by error code. If you are unable to resolve an error condition, see section 1.4 for additional troubleshooting information, including instructions on calling the Hitachi Data Systems Support Center for assistance.

Note: Variable parameters in the error description are represented as {"parameter"} or {"value"}. These parameters/values are replaced in the message by the appropriate parameter/value. For example, {"name"} in the message "Duplicate name error, {"name"} already exists in the collection" is replaced with the name that was duplicated.

Table 1.3 Error Codes 0-999: Server Errors (continues on the following pages)

Error Code	Description	Recommended Action
0	Unknown	Contact the Support Center.
1	An unspecified server error was encountered	Contact the Support Center.
2	An error occurred in initializing the HiCommand Device Manager Server.	See the server "error log" for additional details.
3	The servlet instance is invalid.	A request referenced a servlet not supported by HiCommand Device Manager.
4	The transfer request is incorrect.	The transfer request format is invalid; correct the format, and then retry.
100	Server initialize error : Invalid HTTP port number : {"port-number"}.	Check the Hitachi HiCommand Device Manager Server Installation and Configuration Guide and confirm the value of "server.properties" and restart the HiCommand Device Manager Server.
101	Server initialize error : Invalid HTTPS port number : {"port-number"}.	Check the Hitachi HiCommand Device Manager Server Installation and Configuration Guide and confirm the value of "server.properties" and restart the HiCommand Device Manager Server.
102	Server initialize error : Invalid document root directory : {"directory- name"}.	Check the Hitachi HiCommand Device Manager Server Installation and Configuration Guide and confirm the value of "server.properties" and restart the HiCommand Device Manager Server.
103	Server initialize error : Invalid bind address : {"bind-address"}.	Check the Hitachi HiCommand Device Manager Server Installation and Configuration Guide and confirm the value of "server.properties" and restart the HiCommand Device Manager Server.
104	Server initialize error : Invalid JVM version {"JVM-version"}.	Make sure the version is JVM version 1.3 (or higher).
105	Server initialize error : Unable to load Servlet v2.2 classes.	Make sure the servlet (JSDK v2.2+) can be loaded.
106	Server initialize error : Unable to load SNMP classes.	Make sure the Sun SNMP (JDMK) classes can be loaded and restart the HiCommand Device Manager Server.
107	Server initialize error : An attempt to load Service Modules.	Contact the Support Center.
108	Server initialize error : Error occurred in loading the entry {"entry- name"} in the Device Manager Server KeyStore.	Contact the Support Center.
110	An attempt to start Server failed : Serious errors occurred in checking or updating the database.	Contact the Support Center.

112	The maximum number of connection threads {"number-specified-for-maxThreads"} was exceeded.	Check the Hitachi HiCommand Device Manager Server Installation and Configuration Guide and confirm the value of "server.properties" and restart the HiCommand Device Manager Server.
113	An attempt to construct ServiceConnection failed.	Contact the Support Center.
114	An attempt to start HTTP server on port {"port-number"}.	Contact the Support Center.
115	An attempt to start HTTPS server on port {"port-number"}.	Contact the Support Center.
120	The config file "server.properties" cannot be read.	Check "server.properties" and restart the HiCommand Device Manager Server.
121	Unable to read servlet config file "server.properties".	Check "servlet.properties" and restart the HiCommand Device Manager Server.
123	The MIME types file cannot be read.	Check "mime.properties" and restart the HiCommand Device Manager Server.
124	An attempt to change the user, group or root directory failed with following message {"error message"}.	Contact the Support Center.
150	An attempt to find the entry {"entry-name"} in the Device Manager Server KeyStore failed.	The Device Manager Server KeyStore must be present and contain at least one entry to run the HiCommand Device Manager Server in secure mode.
180	HiCommand Suite Common Component is not installed.	Contact the Support Center.
181	Setting the installation destination of HiCommand Suite Common Component failed.	Check "server.base.home" of "server.properties" and contact the Support Center.
182	Acquisition of the HiCommand Suite Common Component address failed {"method-name"}.	Contact the Support Center.
500	The request contained improperly formatted data.	Correct the request and retry.
501	The device is not supported by HiCommand Device Manager Server. Description = {"subsystem"}.	Confirm that the IP Address in the request is correct. Additionally, this may indicate a configuration error in the subsystem.
504	{"specified- logical group- name"} is a reserved name and cannot be used to a top-level logical group name.	The CLI or another client has tried to use a reserved group name (e.g., Unallocated). You cannot use the names "Unallocated" or "LUN Scan" for a top-level logical group
505	The array family {"family-name"} is not supported by HiCommand Server.	Check the IP array family {"family-name"}.
506	Simultaneous LUN Scans of the subsystem are not allowed.	Only one LUN Scan can be performed on a storage array at a time. Make sure that only one HiCommand Server is actively managing the subsystem.
507	The command {"command-name"} is not supported under this API version.	Check the Hitachi HiCommand Device Manager Server XML API Manual and make sure that the running API version supports the command.
508	The command {"command"} is not supported for the array family {"family-name"} under this API version.	Check the Hitachi HiCommand Device Manager Server XML API Manua and make sure that the running API version supports the command.
509	This HiCommand Server does not support the API version {"version"}.	Check the Hitachi HiCommand Device Manager Server XML API Manual and make sure that the running API version supports the command.
510	The storage named {"storage-name"} is not supported.	Make sure that the configuration files for storage-name exist and the definitions are valid.
511	The storage name {"storage-name"} is defined illegally.	Make sure the storage name relations in the config files are valid.
512	The storage type is {"correct-storage-type"}, not {"wrong - storage-type"}.	Delete the storage system from the HiCommand Device Manager Server and reconstruct the subsystem information.

600	An internal server error occurred.	If this problem persists, contact the Support Center.
601	An invalid managed object parameter was detected.	Make sure that objects are valid.
604	An attempt to initialize HiCommand Suite Common Component Logger failed.	Make sure that the HiCommand Suite Common Component is installed.
700	An internal server error occurred.	Contact the Support Center.
800	An internal error occurred.	Contact the Support Center.
801	An internal error occurred during Storage Navigator starting.	Contact the Support Center.
802	An internal error occurred during Hitachi Dynamic Link Manager starting.	Contact the Support Center.
807	An attempt to start Storage Navigator failed.	Contact the Support Center.
809	An attempt to access to HiCommand Device Manager Agent failed. Hitachi Dynamic Link Manager cannot be started.	If this problem persists, contact the Support Center.
811	An error occurred in HiCommand Suite Common Component. HiCommand Device Manager cannot be started.	Contact the Support Center.
812	A file access error occurred. HiCommand Device Manager cannot be started.	Contact the Support Center.
816	An I/O error occurred. Device Manager cannot be started.	Check the operating environment. If this problem persists, contact the Support Center.
817	An I/O error occurred. Storage Navigator cannot be started.	Check the operating environment. If this problem persists, contact the Support Center.
819	The start operation of {"The function which was going to be started"} is illegal.	Start {"The function which was going to be started"} from HiCommand Device Manager Web Client.

Table 1.4 Error Codes 1000-1999: Translation Layer (HTTP, XML Format) Errors

Error Code	Description	Recommended Action
1000	Unspecified XML translation error was encountered.	Contact the Support Center.
1001	XML translation error : Error parsing XML {“XML-parser-error-message”}.	Check the request code.
1003	XML translation error: Posted entity is not XML.	Check the request code.
1004	XML translation error: The root element is null	Make sure the root element is not null and try again.
1011	Invalid {“attribute-name”} parameter value: {“attribute-value”}.{“attribute-data-type”} expected.	Correct the {“attribute-data-type”} value, and then retry.
1012	XML translation error: An internal error occurred.	Contact the Support Center.
1013	Incorrect element {“element-name”} was specified in XML request.	Check the request code.
1014	Incorrect parameter {“parameter-name”} was specified in XML request element {“element-name”}.	Check the request code.
1015	Incorrect value was specified to parameter {“parameter-name”} in XML request element {“element-name”}.	Check the request code.
1016	Incorrect child element {“child-element-name”} was specified in XML request element {“parent-element-name”}.	Check the request code.

Table 1.5 Error Codes 2000-2999: Security Layer Errors (User Authentication, etc.)

Error Code	Description	Recommended Action
2000	Unspecified security error encountered.	Contact the Support Center.
2001	Duplicate user group names are not allowed.	Make sure that the user group name is not a duplicate, and then retry.
2002	The user group was not found in the HiCommand Device Manager database.	Make sure that the user group name exists in the HiCommand Device Manager database, and then retry.
2003	The "Admin" group cannot be deleted.	At least one Admin group must exist. The Admin group cannot be deleted.
2004	The rule was not found in the HiCommand Device Manager database.	Check the ACL ruleID.
2005	The last rule cannot be deleted from the HiCommand Device Manager database.	At least one ACL rule must exist in the HiCommand Device Manager database.
2006	The user was not found in the HiCommand Device Manager database.	Make sure that the userID exists, and then retry.
2007	Duplicate users are not allowed.	A duplicate userID cannot be registered into the HiCommand Device Manager ACL database. Change the userID.
2008	The last admin user cannot be deleted from the HiCommand Device Manager database.	At least one admin user must exist to manage HiCommand Device Manager users and groups. So the specified admin user cannot be deleted.
2009	The record was not found in the HiCommand Device Manager database.	This is an informational message only. No additional action is required.
2010	Duplicate records are not allowed.	This is an informational message only. No additional action is required.
2011	The user {"user-ID"} has an active request and cannot be deleted from the HiCommand Device Manager database.	Try to delete the user after the operation completes.
2012	The user group cannot be added under this API version.	Check the Hitachi HiCommand Device Manager Server XML API Manual and make sure that the running API version supports the command.
2013	The user cannot be added under this API version.	Check the Hitachi HiCommand Device Manager Server XML API Manual and make sure that the running API version supports the command.

Table 1.6 Error Codes 3000-3999: Database Errors

Error Code	Description	Recommended Action
3000	An unspecified database error was encountered.	Contact the Support Center.
3001	The requested object was not found in the HiCommand Device Manager database.	Make sure that the specified objectID exists in the HiCommand Device Manager database, and then retry.
3002	The ManagedObject does not support name updates.	If the name has to be changed, the object will have to be deleted and re-added.
3003	The device cannot read/write to HiCommand Device Manager database.	An internal server error was encountered. If this problem persists, contact the Support Center.
3004	The database manager handle is not valid.	If this problem persists, contact the Support Center.
3005	An error was encountered during database query.	If this problem persists, contact the Support Center.
3006	An error was encountered during database insert.	If this problem persists, contact the Support Center.
3007	An error was encountered during database update.	If this problem persists, contact the Support Center.
3008	An error was encountered during database delete.	If this problem persists, contact the Support Center.
3009	Database column {"column-name"} was not found in the result set.	If this problem persists, contact the Support Center.
3010	An error was encountered in formatting the database results for column {"column-name"}.	If this problem persists, contact the Support Center.
3011	An attempt to acquire a database connection from the pool failed. Check communications to the HiCommand Device Manager database.	If this problem persists, contact the Support Center.
3012	A failure was encountered during the closing of a database connection.	If this problem persists, contact the Support Center.
3013	A failure was encountered during the committing of a database transaction.	If this problem persists, contact the Support Center.
3014	A failure was encountered during the rolling back of a database transaction.	If this problem persists, contact the Support Center.
3015	Database transaction commit/rollback failed. No transaction is in progress.	If this problem persists, contact the Support Center.
3016	The number of beams of an item exceeds the maximum. Check the input item.	Check the request.
3100	An error occurred during the connecting to the HiCommand Device Manager database.	If this problem persists, contact the Support Center.
3141	An internal server error was encountered. An attempt to acquire the URL of the HostAgent failed.	Contact the Support Center.
3143	An internal server error was encountered. An attempt to acquire the replication information failed	Contact the Support Center.
3144	An internal server error was encountered. An attempt to acquire License Key information from Database failed. (Cause:"cause")	Contact the Support Center.
3999	An error occurred during the initializing of the HiCommand Device Manager database functionality.	Make sure that the HiCommand Device Manager service is started and that the HiCommand Device Manager database exists. If this problem persists, contact the Support Center.

Table 1.7 Error Codes 4000-4999: Network Errors

Error Code	Description	Recommended Action
4000	Unspecified network error encountered.	Contact the Support Center.
4001	Could not resolve the host or IP Address {"IP-address"}.	The specified host name could not be resolved on the network. Check DNS configuration or use the host IP-Address.

Table 1.8 Error Codes 5000-5999: Transport Errors (continues on the following pages)

Error Code	Description	Recommended Action
5000	An unspecified transport error was encountered.	Contact the Support Center.
5001	HiCommand Device Manager does not support the operation {"operation"} on storage array type.	HiCommand Device Manager Server does not support the request on the specified storage device.
5002	The transport connection is not valid for the storage array.	Contact the Support Center.
5003	The storage subsystem is currently locked by {"user-name"}.	The storage array is exclusively locked by another management application. Check whether someone else is accessing the storage array from another management application on the network. If this problem persists, contact the Support Center.
5004	An attempt to acquire the lock for the subsystem failed.	Check whether someone else is accessing the storage array from another management application on the network. If this problem persists, contact the Support Center.
5005	An attempt to release the SNMP lock after " number-of- trials" failed.	Check whether someone else is accessing the storage array from another management application on the network. If this problem persists, contact the Support Center.
5006	An attempt to acquire the SNMP lock failed due to an SNMP error.	Check whether someone else is accessing the storage array from another management application on the network. If this problem persists, contact the Support Center.
5007	An attempt to release the SNMP lock failed due to an SNMP error.	Check SVP for possible problems. If this problem persists, contact the Support Center.
5008	An attempt to perform a refresh failed due to an SNMP error.	Check SVP for possible problems. If this problem persists, contact the Support Center.
5009	An attempt to retrieve info via SNMP failed.	Check the communications to the storage device. Check SVP for possible problems. If this problem persists, contact the Support Center.
5010	An attempt to find the new LUN on port {"port-ID"} failed.	Check the storage device for possible problems. If this problem persists, contact the Support Center.
5011	The DeviceIdentificationServicer is not found.	This is an internal server error indicating an invalid configuration in the transport layer. Contact the Support Center.
5012	No default service is registered for identification of the array family {"array-family"}.	This is an internal server error indicating an invalid configuration in the transport layer. Contact the Support Center.
5013	An error occurred during the acquiring of configuration information from the device at IP Address {"IP-address"}.	An error was encountered during polling for the device configuration information. Check the storage array for possible problems. If this problem persists, contact the Support Center.
5014	HiCommand Device Manager does not support the specified operation {"operation"} on the subsystem. The minimum microcode version is {"version"}.	Contact the Support Center.
5015	The specified {"array group"} is out of range.	Perform a refresh for the storage subsystem.
5016	The specified {"array group"} already exists.	Perform a refresh for the storage subsystem.
5018	The specified {"PDEV"} is already in use.	Perform a refresh for the storage subsystem.
5019	The specified {"LDEV"} out of range.	Perform a refresh for the storage subsystem.
5020	The specified {"LDEV"} already exists.	Perform a refresh for the storage subsystem.

5021	The specified subsystem is an unsupported type.	Check the HiCommand Device Manager and make sure that the subsystem type is supported.
5022	The specified host mode is illegal for the subsystem. The setting of subsystem type does not match to true one.	Discovering is required. Contact the Support Center if the influences are great.
5023	The specified host mode is unsupported on the subsystem.	Check that the subsystem supports it.
5024	The function {"function name"} on the subsystem does not exist.	Check the subsystem functions.
5026	HiCommand Device Manager does not support the specified subsystem.	Contact the Support Center.
5030	Cannot create the LDEV with the specified emulation type under present storage configuration.	Contact the Support Center.
5031	The specified emulation type is invalid for the array group.	Correct the specified emulation type and/or array group, and then retry.
5100	An attempt to execute transport service failed due to a missing parameter {"parameter"}.	An internal server error is encountered when expected parameters are not provided to the transport layer. Provide the missing parameter(s) , and then retry. If this problem persists, contact the Support Center.
5101	An attempt to properly initialize a transport connection failed. See the server error log for additional details.	This is an internal server error indicating an invalid configuration in the transport layer. If this problem persists, contact the Support Center.
5200	Initialization of the SNMP connection at IP Address {"IP-address"} failed.	An error occurred during the initializing of the SNMP for the specified IP Address. This indicates a network connectivity or SNMP configuration error on the device.
5300	An unspecified damp transport error was encountered.	An internal server error was encountered in the transport layer. If this problem persists, contact the Support Center.
5302	An attempt to load a storage array connection library failed.	The DAMP native support library could not be initialized. This may indicate an invalid HiCommand Device Manager Server installation. If this problem persists, contact the Support Center.
5303	An attempt to login to the storage array failed.	Make sure that the userID and password are valid, and then retry. If this problem persists, contact the Support Center.
5306	Specified PDEV are not continuous.	Specify continuous PDEV. If this problem persists, contact the Support Center.
5307	The number of PDEVs ({"number of PDEVs"}) does not match the type {"RAID- type"}	A valid PDEV number should be assigned.
5308	You cannot delete the LU. You can only delete the last logical unit that was created. The last LU created was {"LU-number"}.	You can only delete the last logical unit that was created. The last LU created was {"LU number"}.
5310	An attempt to connect to the storage array failed. Please check the validity of storage type and IP address, and network connectivities.	This indicates a network or storage problem if the storage type and IP address are valid.
5311	No more spare drives can be added on the subsystem.	Remove other spare drives, and then retry.
5312	No more command devices can be added to the specified subsystem.	Up to 2 LUs of command devices can be specified. Delete unnecessary command devices, and then retry.
5380	HiCommand Device Manager supports only this subsystem's microcode "0651".	Check this subsystem's microcode
5381	This HiCommand Device Manager does not support LUN Management option.	Check this subsystem's option list.
5390	The port {"port-name"} was not found on the storage array.	Make sure that the port name is correct, and then retry. If this problem persists, contact the Support Center.

5391	The controller {"controller-ID"} was not found on the storage array.	Make sure that the controller number is correct, and then retry. If this problem persists, contact the Support Center.
5392	Host Storage Domain {"host-storage-domain-ID"} was not found on the storage array.	Make sure that the HostStorageDomain is correct, and then retry. If this problem persists, contact the Support Center.
5393	The specified Port Option {"port-option-name"} is not supported on the microcode version of this subsystem.	Upgrade of a microcode is required to use the specified port option. Contact the Support Center.
5400	An attempt to connect to the storage array at IP Address {"IP-address"} failed. Check the validity user ID and password storage type, IP address and network connectivities.	The HTTP connection command failed. Check the validity of the userID and password, storage type, IP address and network connectivities.
5401	An attempt to retrieve data for the storage array failed. Check the validity of the userID and password and network connectivities.	The HTTP GET command failed to retrieve the desired data. Check the network connectivity and the userID and password used to access the device. The HiCommand Device Manager Server may need to be refreshed to obtain the latest configuration information.
5402	An attempt to execute the operation on the storage array failed.	The HTTP POST command failed. Check the network connectivity and the user and password used to access the device. The HiCommand Device Manager Server may need to be refreshed to obtain the latest configuration information.
5403	An operation is already in progress on the storage array.	The device indicates that an operation is already in progress. Retry after the operation completes.
5404	Physical device {"physical-device-ID"} is not in a valid state to complete the requested operation.	The physical device may be offline, or in a disabled state. Check the device configuration.
5405	Physical device {"physical-device-ID"} is not available for data/spare allocation.	The physical device may already be allocated as data or spare. Try a different physical device.
5406	Physical devices for the array group must be consecutive.	The storage array requires all physical devices for an array group to be in consecutive order.
5407	Physical device {"physical-device-ID"} cannot be used as a spare. Only the last drive in each chassis can be the designated spare.	Only the last drive in each chassis can be the designated spare.
5408	The storage array chassis already has a designated spare.	Only one spare is permitted on each chassis.
5409	The chassis referenced in the request is not valid for the storage array.	Perform a refresh for the storage subsystem, and then retry.
5410	An attempt to complete the operation failed. Check to ensure the requested configuration is valid for the storage array.	The configuration modification of the request may not be supported by the storage array. Make sure that the configuration modification is supported, and then retry.
5411	An attempt to properly initialize the storage failed.	Check the device to ensure proper operation. The initialization may have been cancelled or interrupted.
5412	The LUN parameters are not valid for the storage array.	Make sure that the requested port ID, LUN and devNum combination is supported. This may require the "multipath support" option to be enabled for the storage array.
5413	Unallocated storage is not available for the request.	The array group cannot be added to the specified chassis.
5414	The first array group of the chassis must utilize the first physical device.	Check the specified physical device.
5416	The control unit for devNum={"devNum"} cannot be used on the subsystem.	The attempt to add a logical unit failed, because the cu is not valid.
5417	Physical devices must be consecutive between current and previous array group.	Make sure that the requested PDEVs are correct.
5418	All paths for attaching the volume are not specified.	Specify both ports which attach the volume.
5419	The specified path is either of paths which have the same volume.	Specify both paths which have the volume.

5500	No response from the device at IP Address {"IP-address"}.	Error accessing the specified IP Address. This indicates a network connectivity or SNMP configuration error on the device.
5540	An internal server error was encountered. An attempt to acquire the replication information failed.	Contact the Support Center.
5600	An unspecified error occurred.	Contact the Support Center.
5601	The RMI connection to {"operating-remote-object"} failed. Check the validity of the storage type, IP address and network connectivities.	This indicates a network or storage problem if the storage type and IP address are valid.
5607	The storage array at {"IP-address"} is currently locked by another user or undergoing reconfiguration.	The storage array is exclusively locked by another management application. Retry after waiting a while. If this problem persists, contact the Support Center.
5608	The storage array at {"IP-address"} refused your connection. Check your user ID and password.	Make sure that your user ID and password are specified correctly.
5609	RMI Session trouble occurred at {"IP address"}.	This indicates a network or storage problem.
5610	An internal server error was encountered. An attempt to acquire License Key information failed. (Cause:"cause")	Contact the Support Center.
5700	Not enough free space exists.	Specify the size within the scope of free space available.
5701	Invalid Host Storage Domain ID.	Contact the Support Center.
5702	The port specified already has the maximum number of LUNs	No more LUNs can be specified on this port, select a different port to add LUNs.
5703	The Host Storage Domain specified already has the maximum number of LUNs	No more LUNs can be specified on this Host Storage Domain. Select a different Host Storage Domain to add LUNs.
5704	The LDEV of HIHSM is reserved; it cannot be used in a LUSE.	Perform a refresh for the storage subsystem and check the request.
5705	The LU is an OnDemand device and cannot be used for a LUN.	Perform a refresh for the storage subsystem and check the request.
5706	The specified LDEV does not exist.	Perform a refresh for the storage subsystem to obtain the latest configuration information.
5707	The specified WWN does not exist.	Perform a refresh for the storage subsystem to obtain the latest configuration information.
5708	The specified port already has the maximum number of WWNs	Check the request.
5709	The specified Host Storage Domain already has the maximum number of WWNs	Check the request.
5710	The specific WWN already exists	Perform a refresh for the storage subsystem to obtain the latest configuration information, and check the specified WWN.
5711	The control unit for devNum cannot be used.	The attempt to add a logical unit failed. The cu number is not valid. Perform a refresh for the storage subsystem to obtain the latest configuration information.
5712	LDEV cannot be created because the SSID is not set.	You need to set an appropriate SSID from SVP. Contact the subsystem administrator or call maintenance personnel.
5713	The specified capacity is invalid.	Specify a valid capacity, and then retry.
5714	The setting value of the security option of Storage array has changed. A refresh of the storage subsystem is recommended. Contact your system administrator if you are a local user.	The HiCommand Device Manager Server may not contain the latest storage device information. A "refresh" should be performed. This is performed using GUI "refresh" capability or the "AddStorageArray" API call.

5715	This API version does not support the LUN Management option.	Check this subsystem's option list. Alternatively, check the Hitachi HiCommand Device Manager Server XML API Manual and make sure the running API version supports the command.
5716	The specified port is not a Fibre Channel Port, so this request cannot be processed.	Specify a Fibre Channel port, and then retry.
5717	The security switch of the specified port is OFF, so this request cannot be processed.	Turn ON the security switch of the port, and then retry.
5718	The port where the specified HostStorageDomain belongs is not a Fiber Channel Port. Request cannot be processed.	Specify a Host-Storage-Domain that belongs to a Fibre Channel port, and then retry.
5719	The security switch of the port where the specified Host Storage Domain belongs is OFF so this request cannot be processed.	Turn ON the security switch of the port to which the specified HostStorageDomain belongs, and then retry.
5720	The specified Host Storage Domain {"Host-Storage-Domain-ID"} already exists on the port {"port-ID"}.	Check the combination of the specified Host Storage Domain and port ID.
5721	Inconsistency was detected for the storage array. A refresh of the storage subsystem is recommended. Contact your system administrator if you are a local user.	The HiCommand Device Manager Server may not contain the most current storage device information. Perform a refresh for the storage subsystem.
5722	This operation to the subsystem failed. Some of the operation may have been applied to the storage subsystem. A refresh of the storage subsystem is recommended. Contact your system administrator if you are a local user.	Perform a refresh for the storage subsystem. If this problem persists, contact the Support Center.
5723	The LUN {"LUN-of-a-path"} was not found on the storage array.	Check the LUN.
5724	The SCSI ID {"SCSI-ID-of-a-path"} was not found on the storage array.	Check the SCSI ID.
5725	The LUN {"LUN-of-a-path"} is already used on the storage array.	Check the LUN.
5726	The port {"port-ID"} was not found on the storage array.	Check the Port.
5727	The Host Storage Domain {"Host-Storage-Domain-ID"} does not exist on the Port {"port-ID"}.	Check the Host Storage Domain.
5728	PDEV #{"PDEV-ID"} is not a spare drive.	Check the PDEV.
5729	The specification of nickname {"nickname"} contains an error. The maximum length of the nickname is {" maximum-length-of-nickname"} bytes.	Check the specified nickname. Make sure that the nickname is correct, and then retry.

Table 1.9 Error Codes 6000-6999: Storage Array Errors (SNMP, etc.) (continues on the following pages)

Error Code	Description	Recommended Action
6000	An unspecified storage array error was encountered.	Contact the Support Center.
6002	An unspecified error occurred while executing SNMP command.	Contact the Support Center.
6003	An attempt to create SNMP session on device at IP Address {"IP-address at host-name"} failed.	An internal server error was encountered due to a failure of the SNMP library. Contact the Support Center.
6004	Error retrieving oid {"oid"} due to a null oid table.	An internal server error was encountered due to a failure of the SNMP library. Contact the Support Center.
6005	SNMP failure retrieving oid {"oid"}.	An error occurred while accessing the device via SNMP. This indicates a network connectivity or SNMP configuration error on the device.
6006	A null value for oid {"oid"} was retrieved via SNMP.	An error occurred while accessing the device via SNMP. This indicates a network connectivity or SNMP configuration error on the device.
6007	SNMP error status {"status"} waiting for command {"command"} to complete.	An error occurred while accessing the device via SNMP. This indicates a network connectivity or SNMP configuration error on the device.
6008	Communications timed out waiting for a response from the array. Check the network connection.	An error occurred while accessing the device via SNMP. This indicates a network connectivity or SNMP configuration error on the device.
6009	SNMP set request failed executing command {"command"}. Error status = {"error-status"}, index={"index"}.	An error occurred while accessing the device via SNMP. This indicates a network connectivity or SNMP configuration error on the device.
6010	An invalid command status trap was detected.	An internal server error was encountered in the command trap specification. Contact the Support Center.
6011	SNMP authentication failed on device at IP Address {"IP-address"}.	The HiCommand Device Manager server must have read/write permission to perform management functions on the storage device. Check the SNMP community string and make sure read/write permission.
6012	The storage array cannot be accessed. An operation is in progress at the SVP.	An attempt to access the storage device failed as the SVP is currently in "Modify" mode. The HiCommand Device Manager Server must have exclusive access to the device to perform management functions.
6013	The device at IP Address {"IP-address"} was not identified as a family storage array. Check the IP address and SNMP agent configuration	Check the IP address and SNMP agent connectivity.
6014	The device at IP Address {"IP-address"} was not identified as a T300 family storage array. Check the IP address.	Ensure that the IP Address is correct.
6100	SNMP command failed. Command status={"command status"}, meaning={"meaning"}. Some of the operation may have been applied to the storage subsystem. A refresh of the storage subsystem is recommended. Contact your system administrator if you are a local user.	Check the Hitachi HiCommand Device Manager Web Client User's Guide. The specific "status" and "meaning" may provide additional insight into the source of the problem.
6101	The SNMP command failed. Information is not available. Perform a refresh or contact your system administrator if you are a local user.	Perform a refresh for the storage array, and then retry.

6299	The command failed on the storage array. DumpErrorCode={"error-code-of-DAMP"} TransErrorCode={"error-code-of-DAMP-Trans"} message={"error-message"}. Some of the operation may have been applied to the storage subsystem. A refresh of the storage subsystem is recommended. Contact your system administrator if you are a local user.	Check the Hitachi HiCommand Device Manager Web Client User's Guide. The specific "error message" may provide additional insight into the source of the problem.
6300	The command failed on the storage array.	Contact the Support Center.
6301	The target ID mode of the controller is not in "M-TID,M-LUN" (mapping) mode.	The Target ID mode that HiCommand Device Manager supports is "M-TID,M-LUN" (mapping mode) only. For details about the Target ID mode, see the "Disk Array Management Program 2 (For GUI) User's Guide".
6302	An attempt to retrieve Fibre Channel port information for controller {"controller-ID"} failed.	Contact the Support Center.
6303	An attempt to retrieve the fibre port information for port {"port-name"} failed.	Contact the Support Center.
6305	The LUN security option is not installed on the storage array.	Check the configuration of the storage device. The LUN security option must be installed to perform this function.
6306	The LUN security option is disabled on the storage array.	Check the configuration of the storage device. The LUN security option must be installed to perform this function.
6307	The LUN security cannot be modified because the port is in HP mode.	Changing LUN security requires disabled the HP mode of the port.
6309	The LUN {"LUN"} is already reserved for the non-existing LDEV {"LDEV-number"} on port {"port-name"}.	HiCommand Device Manager does not support managing the specified LUN. Release the LUN via the DAMP GUI.
6311	The integration lu option is disabled on the storage array.	Check the configuration of the storage device. The integration lu option must be enabled to perform this function.
6312	The integration lu option is not installed on the storage array.	Check the configuration of the storage device. The integration lu option must be installed to perform this function.
6313	An attempt to retrieve port information for controller {"controller-ID"} failed.	Contact the Support Center.
6314	An attempt to retrieve port information for port {"port-name"} failed.	Contact the Support Center.
6315	Invalid host mode 2 {"name-of-host-mode-2"} for fibre port.	This may indicate a configuration error on the storage device. Check the configuration of the storage device.
6316	Invalid host mode 2 {"name-of-host-mode-2"} for SCSI port.	This may indicate a configuration error on the storage device. Check the configuration of the storage device.
6317	Invalid port option {"port-option"} for fibre port.	This may indicate a configuration error on the storage device. Check the configuration of the storage device.
6318	Invalid port option {"port-option"} for SCSI port.	This may indicate a configuration error on the storage device. Check the configuration of the storage device.
6319	Invalid set of port options.	This may indicate a configuration error on the storage device. Check the configuration of the storage device.
6320	The subsystem does not support the host mode 2 {"name-of-host-mode-2"}.	This may indicate a configuration error on the storage device. Check the configuration of the storage device.
6321	The target storage device is not in the Mapping mode.	The operation requires the Mapping mode to be enabled. Check the device configuration. For details about the Mapping mode, see the "Disk Array Management Program 2 (For GUI) User's Guide".

6400	The command failed on the storage array. ErrorCode1={"error-code-1"}, ErrorCode2={"error-code-2"}, Meaning={"meaning"}. Do a refresh for the subsystem if you tried to change the configurations. Contact the Support Center if you are a local user.	Check the Hitachi HiCommand Device Manager Web Client User's Guide. The device specific "ErrorCode1", "ErrorCode2", and "Meaning" may provide additional insight into the source of the problem.
6999	SNMP command halted after repeated failures.	Repeated "general error" failures detected via SNMP. This is an indication of a SVP problem.

Table 1.10 Error Codes 7000-8999: Command (Agent) Errors (continues on the following pages)

Error Code	Description	Recommended Action
7000	Unspecified agent error was encountered.	Contact the Support Center.
7004	Invalid "LU" parameter. Integer expected.	Make sure the "LU" is an integer value, and then retry. If this problem persists, contact the Support Center.
7005	Missing parameter : Storage Array "objectID"	The ObjectID parameter of Storage Array is required. Provide the missing parameter, and then retry. If this problem persists, contact the Support Center.
7006	Missing parameter : Port "objectID".	The ObjectID parameter of the port is required. Provide the missing parameter, and then retry. If this problem persists, contact the Support Center.
7007	Missing parameter : Path "objectID".	The ObjectID parameter of Path is required. Provide the missing parameter, and then retry. If this problem persists, contact the Support Center.
7008	Missing parameter : "WWN".	The WWN parameter is required. Provide the missing parameter, and then retry. If this problem persists, contact the Support Center.
7009	Incorrect value for the "scsiID" parameter.	Check the SCSIID. Make sure that the SCSIID is correct, and then retry. If this problem persists, contact the Support Center.
7010	The WWN {"WWN"} is invalid.	Make sure that the WWN parameter has the proper format.
7011	Missing parameter : WWNGroup "objectID".	ObjectID parameter of WWNGroup is required. Provide the missing parameter, and then retry. If this problem persists, contact the Support Center.
7012	Missing parameter : LUNGroup "objectID".	The ObjectID parameter of LUNGroup is required. Provide the missing parameter, and then retry. If this problem persists, contact the Support Center.
7013	The objectID references an incorrect object type for the request.	Check the specified type of object.
7014	Missing parameter : Logical Group "objectID".	The ObjectID parameter of Logical Group is required. Provide the missing parameter, and then retry. If this problem persists, contact the Support Center.
7015	Missing parameter : Host "objectID".	The ObjectID parameter of Host is required. Provide the missing parameter, and then retry. If this problem persists, contact the Support Center.
7016	Missing parameter : Logical Group Element "objectID".	The ObjectID parameter to be registered for the logical group as logicalGroup element is required. Provide the missing parameter, and then retry. If this problem persists, contact the Support Center.
7017	Missing parameter : "objectID ".	ObjectID parameter is required. Provide the missing parameter, and then retry. If this problem persists, contact the Support Center.
7018	Missing parameter : Logical Group "name".	Name parameter of Logical Group is required. Provide the missing parameter, and then retry. If this problem persists, contact the Support Center.
7019	Missing parameter : Host "name".	The Name parameter of Host is required. Provide the missing parameter, and then retry. If this problem persists, contact the Support Center.

7020	A required element is missing from the request. {"element"}	Make sure that all of the required elements of a request are present. Provide the missing element, and then retry. If this problem persists, contact the Support Center.
7022	Missing parameter : Host Info {"unspecified-parameter"}.	Specify the object name that is not registered as Host Info.
7023	The logical group parent is invalid. A group cannot be its own parent.	Specify a logical group that is not also its own parent group.
7024	The logical group parent is invalid. The request creates a circular group dependency.	The relationship between logical group parent and logical group child is invalid. Check the specified group.
7025	The logical group parent was not found in the HiCommand Device Manager database.	Check the logical group parent.
7026	The logical group was not found in the HiCommand Device Manager database.	Check the logical group.
7027	The storage array was not found in the HiCommand Device Manager database.	Check the coding of storage array.
7029	The LUN was not found in the HiCommand Device Manager database.	Check the LUN.
7030	The host was not found in the HiCommand Device Manager database.	Check the host.
7031	The host info was not found in the HiCommand Device Manager database.	Check the host info.
7034	Missing parameter: User "loginID".	The User "loginID" is required. Provide the missing parameter, and then retry. If this problem persists, contact the Support Center.
7036	Missing parameter: Rule "ruleID".	The Rule "ruleID" is required. Provide the missing parameter, and then retry. If this problem persists, contact the Support Center.
7038	Missing parameter: UserGroup "name".	The UserGroup "name" is required. Provide the missing parameter, and then retry. If this problem persists, contact the Support Center.
7039	The user group was not found in the HiCommand Device Manager database.	Check the user group.
7040	Missing parameter: User "password".	The User "password" is required. Provide the missing parameter, and then retry. If this problem persists, contact the Support Center.
7041	Missing parameter: User "groupName".	The user "groupName" is required. Provide the missing parameter, and then retry. If this problem persists, contact the Support Center.
7043	The "login" is invalid. Use from 4 to 25 characters (inclusive).	From 4 to 25 characters (inclusive) are required for the login ID.
7044	The "password" is invalid. Use from 4 to 25 characters (inclusive).	From 4 to 25 characters (inclusive) are required for the password.
7045	Cannot add group named {"specified-LogicalGroup"} with parent {"parent-of-target"}. A child group of that name already exists.	Change the name of the child group, and then retry.
7046	Cannot add group named {"specified-LogicalGroup-name"}. A top-level group of that name already exists.	Change the group name, and then retry.
7047	A zero-length name is not permitted.	Contact the Support Center.
7048	The file named {"file-name"} was not found.	Contact the Support Center.
7049	The file named {"filename"} cannot be read.	Contact the Support Center.

7051	Missing parameter: Debug level "value".	The debug level "value" is required. Provide the missing parameter, and then retry. If this problem persists, contact the Support Center.
7053	Debug level value {"debug level value"} is not valid.	Valid Debug levels are: 0 (All information), 1 (Informational messages and above), 2 (Warnings and above) 3 (Errors and above), 4 (Fatal errors only). Make sure that the "value" is valid, and then retry.
7054	An attempt to unregister subscriber {"subscriber-ID"} failed.	The specified subscriber "subscriber-ID" does not exist. Make sure that the "subscriber-ID" is valid.
7055	Missing parameter: Subscriber "topic".	The topic of subscriber is required. Provide the missing parameter, and then retry. If this problem persists, contact the Support Center.
7056	An attempt to register subscriber {"subscriber-ID"} failed.	Contact the Support Center.
7057	Missing parameter: Network resource "IP Address".	The "IP Address" is required. Provide the missing parameter, and then retry. If this problem persists, contact the Support Center.
7059	Invalid "count" parameter. Positive integer expected. The attribute should only be specified once.	Check the specified "count". Make sure that the "count" is a positive integer, and then retry.
7061	Invalid "start" parameter. Date expected. The attribute should only be specified once.	Check the specified "start". Make sure that "start" is a valid date, and then retry.
7062	Missing parameter: Object "name".	The object "name" is required. Provide the missing parameter, and then retry. If this problem persists, contact the Support Center.
7063	Invalid parameter: Alert "number" or "source" required.	Both Alert "number" and "source" are required. Provide the missing parameters, and then retry. If this problem persists, contact the Support Center.
7064	The parent storage array could not be found.	Check the description of storage array.
7065	Missing parameter: Storage device "arrayFamily".	The "arrayFamily" of the storage device is required. Provide the missing parameter, and then retry. If this problem persists, contact the Support Center.
7066	Missing parameter: Storage device "userID" or "userPassword".	Parameter "userID" or "userPassword" of storage array is required. Provide the missing parameter, and then retry. If this problem persists, contact the Support Center.
7067	Missing parameter: Storage device "searchCommunity".	Parameter "searchCommunity" of storage array is required. Provide the missing parameter, and then retry. If this problem persists, contact the Support Center.
7068	Invalid "objectID" parameter.	Make sure that the specified "objectID" is correct, and then retry.
7069	The logical group can only contain objects from a single storage array.	An attempt was made to add an object to a logical group. However, a group can only contain objects from a single array.
7070	Invalid "Topic" parameter.	Make sure that the specified "Topic" is correct, and then retry.
7071	Parameter "name" exceeds the maximum possible length.	Make sure that the length of "name" does not exceed the maximum length, and then retry.
7072	Missing request target parameter: {"class-name"}.	Contact the Support Center.
7073	Invalid request target parameter: Expected {"expected-class-name"}; found {"specified-class-name"}.	Contact the Support Center.
7074	Missing parameter : Port Controller "ID".	The PortController "ID" is required. Provide the missing parameter, and then retry. If this problem persists, contact the Support Center.

7075	Missing parameter : Port Controller "Mode".	The "Mode" of Port Controller is required. Provide the missing parameter, and then retry. If this problem persists, contact the Support Center.
7076	Invalid value for Port Controller Mode.	Valid Port Controller value is required. Refer to the Hitachi HiCommand Device Manager Server XML API Manual.
7077	The requested mode can not be set on a non-Fibre Channel Port Controller.	This request can only be attempted for a Fibre Channel Port.
7078	The ports for the requested Port Controller could not be found.	Contact the Support Center.
7079	High Speed mode cannot be set because port {"port1-ID"} and port {"port2-ID"} have differing host modes.	High Speed mode requires that "port1-ID" and "port2-ID" have the same host mode.
7080	High Speed mode cannot be set because port {"port1-ID"} and port {"port2-ID"} have differing topologies.	High Speed mode requires that "port1-ID" and "port2-ID" have the same topology.
7081	High Speed mode cannot be set because port {"port1-ID"} and port {"port2-ID"} have the same fibre address.	High Speed mode requires that "port1-ID" and "port2-ID" have the same fibre address.
7082	High Speed mode cannot be set because port {"port-ID"} topology is Point-To-Point.	High Speed mode requires that the topology of port {"port-ID"} be FC-AL.
7083	High Speed mode cannot be set because LDEV {"devnum"} is assigned to both port {"port1-ID"} and port {"port2-ID"}.	The LDEV has to be released from port {"port1-ID"} or port {"port2-ID"} to set High Speed mode.
7084	The requested port has no WWN.	Check the WWN of port.
7085	Insufficient number of physical devices for array group.	The creation of an array group requires at least two physical devices.
7086	The requested host mode is not available on this storage array.	Check the host mode or storage array.
7087	Missing parameter: Rule "operation".	Rule "operation" is required. Provide the missing parameter, and then retry. If this problem persists, contact the Support Center.
7088	Missing parameter : Rule "ruleType".	Rule "ruleType" is required. Provide the missing parameter, and then retry. If this problem persists, contact the Support Center.
7089	Missing parameter : Rule "target".	Rule "target" is required. Provide the missing parameter, and then retry. If this problem persists, contact the Support Center.
7090	Missing parameter: "group name" or "loginID" must be specified.	Either "group name" or "login_ID" is required. Provide the missing parameter, and then retry. If this problem persists, contact the Support Center.
7091	Missing parameter: User "role".	User "role" is required. Provide the missing parameter, and then retry. If this problem persists, contact the Support Center.
7092	Invalid "role" parameter.	Check the specified "role" type.
7093	Invalid cluster number of the Port Controller.	Check the number of the Port Controller.
7094	High speed mode unavailable.	High Speed mode is unsupported with the specified Port Controller.
7095	Invalid CHA number.	Assign a valid card number.
7096	Invalid topology number.	Assign a valid topology.
7097	Invalid fibre address.	Assign a valid fibre address.
7099	Invalid channel speed.	Assign a valid channel speed.
7100	The parameter "portID" is out of range. The valid range is {"minimum-Port-ID"} to {"maximum-Port-ID"}.	Assign "portID" a valid value within the range {"minimum-Port-ID"} to {"maximum-Port-ID"}.
7101	The parameter "LU" is out of range. The valid range is {"minimum-LU(hex) (minimum LU)"} to {"maximum-LU(hex) (maximum LU)"}.	Assign "LU" a valid value within the range {"minimum-LU(hex) (minimum-LU)"} to {"maximum-LU(hex) (maximum-LU)"}.

7102	The parameter "lun" is out of range. The valid range is {"minimum-lun(hex) (minimum- lun)} to {" maximum- lun(hex) (maximum-lun)}.	Assign "lun" a valid value within the range {"minimum-lun(hex) (minimum-lun)} to {" maximum- lun(hex) (maximum- lun)}.
7103	The port was not found on the storage array.	Check the specified port and storage array.
7104	The LU {"LU"} was not found on the storage array.	Check the specified LU and storage array.
7105	The LUN {"LUN"} was not found on the storage array.	Check the specified LUN and storage array.
7106	The LU {"LU"} is already in use on port {"port-name"}.	Check the LU.
7107	The LUN {"LUN"} is already in use on port {"port-name"}.	Check the specified LUN.
7108	The LU {"LU"} is an OnDemand device and cannot be used for a LUN.	Check the specified LU.
7110	LUN cannot be deleted, because one or more hosts are using this LUN. LUN Security must be removed for this LUN before the path can be deleted.	Remove LUN security for this LUN, and then retry.
7111	The WWN {"WWN"} cannot be deleted. The WWN was not found on the port.	Make sure that the WWN and LUN are specified correctly. Otherwise, no action is required.
7114	The security for LUN cannot be changed. The LUN is part of LUNGroup {"LUN-Group-nickname"}.	Delete the LUN Group and reissue the secure LUN command.
7115	The LUN cannot be deleted. The LUN is part of LUNGroup {"LUN-group-nickname"}.	Delete the LUNGroup, and then retry.
7117	The specified WWNGroup "WWNGroup ID" does not exist on the port {"port-ID"}. This command cannot be processed.	Make sure that the correct LUNGroup and port are specified. Otherwise, no action is required.
7118	The specified LUNGroup "LUNGroup-ID" does not exist on the port {"port ID"}. This command cannot be processed.	Make sure that the correct LUNGroup and port are specified. Otherwise, no action is required.
7119	The LUN referenced by the HostInfo was not found on the storage array.	Check the LUN.
7121	The logical group element cannot be deleted. The element is not part of the Logical group.	Check the specified objectID.
7122	The host name {"host-name"} is already used by an existing host.	Specify after changing the host name.
7123	The host info record is already contained in the HiCommand Device Manager database.	Check the HostInfo.
7124	The storage array with serial number {"serial-number"} was not found in the HiCommand Device Manager database.	Check the specified objectID of storage array.
7125	Cannot delete host {"host name"}. One of the WorldWideNames is securing a lun.	Unsecure the LUN before deleting the host.
7126	The LU {"lu"} is a HIHSM reserved device and cannot be used for a LUN.	Check the LU.
7127	The logical unit with LU {"lu"} is a command device and cannot be used for a LUN.	Check the LU.
7128	The logical unit with LU {"lu"} is a command device. The LUN cannot be deleted.	Check the LU.
7129	The WWN "00.00.00.00.00.00.00.00" is invalid and cannot be used to secure a LUN.	Check to ensure the WWN .
7130	A LUN cannot be added to a port of type {"port-type"}.	Check the port.
7131	The SCSI ID {"SCSI-ID"} was not found on the storage array.	Check the SCSIID.

7132	The requested action is not permitted on a non-Fibre Channel port.	This request is only permitted on a Fibre Channel port.
7133	Cannot exceed the maximum number of WWNs (“{maximum-number-of-WWNs}”).	No more WWNs can be added to the port. Delete WWNs that are not used, and then retry.
7134	The WWN {“WWN”} is already in use by host {“host-name”}.	Check the specified WWN.
7135	Physical device # {“physical-device-number”} is already in use (role={“role”}).	Check the PDEV “pdevID”.
7136	Physical device # {“physical-device-number”} is not on the proper chassis for the array group.	A PDEV with chassis specified as array groups is required.
7137	A logical unit that has a LUN defined cannot be deleted.	The LUN must be deleted prior to deleting the logical unit.
7138	An array group that has a LUN defined cannot be deleted.	The LUN must be deleted prior to deleting the array group.
7139	Parameter “chassis” is out of range. The valid range is {“minimum-number-of-chassis”} to {“maximum-number-of-chassis”}.	Specify a valid “chassis” range within the range {“minimum-number-of-chassis”} to {“maximum-number-of-chassis”}, and then retry.
7140	The Port Controller was not found in the HiCommand Device Manager database.	Check the specified Port Controller.
7141	The maximum number of LDEVs (“{maximum-number-of-LDEVs}”) for the array group cannot be exceeded.	Ensure that the number of LDEVs in the array group does not exceed the maximum, and then retry.
7142	The delete spare request cannot be completed. The physical device # {“physical-device-ID”} is not a spare drive.	Check the specified PDEV.
7143	The spare physical device # {“spare-physical-device-ID”} must be deleted from the array group.	Delete this array group to delete this spare physical device.
7144	An invalid emulation type was specified.	The emulation type specified is not supported by the operation. HiCommand Device Manager Server can only create logical units using OPEN emulation.
7145	An invalid capacity was specified for the desired emulation type.	Make sure that the capacity falls within the valid range for the emulation type.
7146	Insufficient free space on the specified array group.	Specify the size within the scope of free space.
7147	The maximum number of array groups ({“maximum-number-of-array-groups”}) for the chassis cannot be exceeded.	Check the specified chassis.
7148	The parameter “defaultPortController” is out of range. The valid range is {“minimum-controller number”} to {“maximum controller-number”}.	Specify a “defaultPortController” in the range {“minimum-controller number”} to {“maximum-controller-number”}, and then retry.
7149	HiCommand Device Manager does not manage the specified Port Controller {“port-controller-ID”}.	Check the specified controller.
7150	HiCommand Device Manager does not manage the specified port {“port-name”}.	Check the specified port .
7151	Cannot find the specified storage array.	Check the specified storage array.
7152	The parameter “domainID” is out of range. The valid range is {“minimum number of domain-ID”} to {“maximum number of domain-ID”}.	Specify a “domainID” in the range {“minimum-number-of-domain-ID”} to {“maximum number-of-domain-ID”}, and then retry.
7153	The domainID {“domainID”} is already in use on port {“port-ID”}.	Change the domainID.
7154	The maximum number of HostStorageDomains {“maximum number-of-host-storage-domains”} for the port {“port-number”} cannot be exceeded.	Specify valid value.
7155	The HostStorageDomain was not found in the HiCommand Device Manager database.	Check the specified HostStorageDomain.

7156	Missing parameter : HostStorageDomain "objectID".	HostStorageDomain "objectID" is required. Provide the missing parameter, and then retry. If this problem persists, contact the Support Center.
7157	Missing parameter "host mode" in ModifyPort request.	HostStorageDomain "host mode" is required. Provide the missing parameter, and then retry. If this problem persists, contact the Support Center.
7160	The security for the LUN cannot be changed. The WWN is part of WWNGroup {"WWNGroup"}.	Delete the WWN Group, and reissue the secure/unsecure LUN command.
7161	Invalid parameter: Filer "Condition type".	Make sure that "Condition type" is valid. Valid Condition types are "ALL", "FREE" and "ASSIGNED".
7162	Missing parameter: "Port".	Port parameter required. Provide the missing parameter, and then retry. If this problem persists, contact the Support Center.
7163	Invalid port option.	This is an informational message only. No additional action is required.
7164	Invalid host mode 2.	This is an informational message only. No additional action is required.
7165	Inconsistent host mode is specified for the port.	Specified subsystem does not support multi host modes on a port.
7166	Inconsistent set of host mode 2 is specified for port.	Specified subsystem does not support multi sets of host mode 2 on a port.
7167	XML Message has no API Version for the URLLink.	Contact the Support Center.
7168	Specified WWN does not exist on the target {"target-element"}.	Check the specified WWN, and then retry.
7170	The specified login ID is invalid.	Specify an effective login ID.
7171	A logical unit with ShadowImage/TrueCopy defined cannot be deleted.	ShadowImage/TrueCopy must be deleted prior to deleting the logical unit.
7172	No more command devices can be added to the specified subsystem.	Up to 2 LUs command devices can be specified. Delete any unnecessary command device, and then retry.
7174	For the specified emulation type {"emulation type"}, the creation capacity automatically computed from the specified size {"specified-size-in-KB"} KB is {"creation-size-in-KB"} KB. Respecify so that the creation capacity is within the range of {"lower limit size KB"} KB to {"upper-limit-size-in-KB"} KB.	Make sure that the capacity falls within the valid range for the emulation type.
7175	Free space is insufficient on the specified array group. Specify the size within the range of the free space. The automatically computed capacity for creation is {"creation-size-in-KB"} KB.	Specify the size within the range of the free space.
7176	A Command Device without a LUN defined cannot be added.	Perform this operation after the definition of a LUN.
7177	The last path cannot be deleted for a LU of a command device.	Release a path after deleting a command device.
7178	The specified command option is invalid.	An invalid command option is specified.
7179	Invalid parameter: domainID and WWN cannot be specified at the same time.	Make sure that the request is correct.
7180	In LUSE creation, LDEV {"devnum"} overlaps and is specified.	Check the specification of LDEV.
7181	Missing parameter LogicalUnit "command device".	The command device parameter of LogicalUnit is required. Provide the missing parameter, and then retry. If this problem persists, contact the Support Center.
7182	The LU {"LU"} is a HIHSM reserved device and cannot be used for a command device.	Check the LU.
7183	The LU {"LU"} is a LUSE device and cannot be used for a command device.	Check the LU.

7184	The LU {"LU"} is a ShadowImage/TrueCopy device and cannot be used for a Command Device.	Check the LU.
7185	The last path cannot be deleted for a LU of a ShadowImage/TrueCopy.	Release a path after deleting a ShadowImage/TrueCopy.
7186	To create a command device, the size of specified LU must be {"minimum size of LU which can create a command device"} KB or more.	Check the LU.
7187	The path of the non-representative LDEV which constitutes LUSE cannot be deleted.	Delete the path of the non-representative LDEV which constitutes LUSE with the Disk Array Management Program. Afterword, perform a refresh operation for HiCommand Device Manager.
7188	The path cannot be deleted for a LU of a ShadowImage/TrueCopy.	Release a path after deleting a ShadowImage/TrueCopy.
7200	Request failed. Empty messageID in request.	GetRequestStatus requires a valid messageID attribute. Add a valid messageID attribute to the request, and then retry.
7202	Request failed. messageID not found: {"message-id"}.	No data was found for message ID#. Probable cause: the data was already retrieved. See if the HiCommand Device Manager database has been updated with the results of the request (i.e. Add Storage Array).
7300	A negative value is specified for the Messages timeToWait attribute.	Specify valid value.
7301	Unknown subscriber.	Register subscriber by using AddSubscriber of the XML-API.
7302	Missing parameter in the URLLink request.	Check the specified URLLink.
7303	The URLLink in the request does not exist.	Check the specified URLLink.
7304	The URLLink request contains both the objectID and linkedID parameters.	Either objectID or linkedID must be specified, but not both.
7305	The objectID in the URLLink request does not reference a known storage array.	Check the specified storage array.
7350	LUSE Feature is not available for the storage array.	The storage array does not support LUSE functionality. Check the specified storage array.
7351	To create a LUSE, each LDEV must have the same {"attribute-name"}; requested LDEVs had {"attribute-name"} of {"value"} and {"value"}?	LDEVs that have the same "type" are required to create LUSE.
7352	At this API version, LDEV which constitutes LUSE cannot be specified in LUSE creation.	Check the Hitachi HiCommand Device Manager Server XML API Manual and make sure that the running API version supports the command.
7353	LDEV with ID {"LDEV-identifier (current-objectID)} is HIHSM reserved; cannot be used in a LUSE.	Check the specified LDEVs to be created for LUSE.
7354	LDEV with ID {"LDEV-identifier (current-objectID)} is currently a LUN; cannot be used in a LUSE.	Check the specified LDEVs to be created for LUSE.
7356	Number of LDEVs of a LUSE must be between {"minimum-number-of-LDEVs"} and {"maximum-number-of-LDEVs"}	Check the number of specified LDEVs to be created for LUSE, and make sure they are in the acceptable range.
7357	Response data not found for Transport Layer	Contact the Support Center.
7358	Specified LDEV with {"LDEV-identifier (current-ID)} is RAID 0. A RAID 0 volume cannot be used to create a LUSE.	Check the specified LDEVs to be created for LUSE.
7359	The microcode version of the storage array is not sufficient for the requested operation:LUSE. The microcode version is {"microcode version"}.	Check the microcode version contained in the subsystem.

7360	All LDEVs for a LUSE must be controlled by the same default-controller to create the LUSE.	Check the specified LDEVs to be created for LUSE.
7361	To create a LUSE, the LDEV with ID {"objectID-of-LDEV"} must be specified as Main LU on the microcode version {"microcode-version"}.	Check the specified LDEVs to be created for LUSE.
7362	To create a LUSE, the size of the LUSE must be less than 2TB. The requested size of the LUSE is {"size-of-LUSE-in-KB"}KB.	Check the specified LDEVs to be created for LUSE.
7363	A logical unit that has a LUSE defined cannot be deleted. The LUSE must be deleted before deleting the logical unit.	LUSE must be deleted before deleting LDEV.
7400	HiScan SetHostVolume agent encountered error : {"error details"}.	Contact the Support Center.
7441	An internal server error was encountered. The LogicalUnit that the HostAgent specifies was not found in the database.	Perform a refresh for subsystem ({"serial-number"}, {"array-type"}) or check the status of HostAgent.
7450	An internal server error was encountered. An attempt to acquire LogicalUnit information that is P-VOL or S-VOL failed.	Contact the Support Center.
7452	An internal server error was encountered. An attempt to acquire information to access the HostAgent failed.	Contact the Support Center.
7453	An internal server error was encountered. An error occurred during the search for HostAgent(s) that will be accessed. Port {"port number"} does not exist.	Contact the Support Center.
7456	An attempt to operate {"open or close"} on HostAgent server {"URL of HostAgent"} failed. The response from the HostAgent was {"response-from-HostAgent"}.	Confirm the status of HiCommand Device Manager Agent. If the Agent runs well, contact the Support Center.
7457	An Error occurred during {"communicating or disconnecting"} with the HostAgent {"URL-of-HostAgent"}.	Check the status of the network connectivity between HiCommand Device Manager Server and HostAgent. If the network status is normal, contact the Support Center.
7458	An internal server error was encountered. An attempt to create a request to the HostAgent failed. The POST request of HTTP cannot be performed.	Contact the Support Center.
7459	An attempt to resolve the IP address of HostAgent Server failed.	Check that the IP address of HostAgent is valid.
7728	Error occurred while parsing response from HostAgent.	Contact the Support Center.
7730	An expanded LU consisting of 2 or more volumes linked with a LUN created by Disk Array Management Program cannot be deleted.	Delete with the Disk Array Management Program. Afterward, perform a refresh operation for HiCommand Device Manager perform.
7734	Invalid information was sent from HostAgent. Serial number of the subsystem that has replication volume was not specified.	Contact the Support Center.
7740	This API version does not support the LUN Management option.	Check this subsystem's option list. Alternatively, check the Hitachi HiCommand Device Manager Server XML API Manual and make sure that the running API version supports the command.
7800	There are too many elements in the request. The maximum number of {"element-name-in-XML-API"} elements which can be specified is {"maximum-number-of-elements"}.	Check the number of elements, and then retry.
7801	A required element is missing from the request. Specify {"element-name"} elements.	Check that all of the required elements of a request are present. Provide the missing element, and then retry.
7802	Sufficient elements are not specified in the request. For processing this command, {"minimum-number-of-elements"} or more {"element-name"} elements are required.	Check the number of elements, and then retry.

7803	Missing parameter: {"element-name"} {"attribute-name"}.	Specify the required parameter, and then retry.
7804	Some parameters are incorrect. The same objectID {"objectID-of-path "} is specified with two or more "Path" elements in the request.	Check the specification of the objectID of Path elements, and then retry.
7805	Some parameters are incorrect. The same WWN {"WWN"} is specified with two or more "WorldWideName" elements in the request.	Check the specification of the WWN of WorldWideName elements, and then retry.
7806	The security switch of the specified port {"Port-ID"} is OFF. For processing this command, the security switch of the Port should be ON.	Turn ON the security switch of the port, and then retry.
7807	There are no paths on the specified port {"Port-ID"}. For creating a LUNGroup, at least one Path needs to exist on the Port of a creation place.	Create one or more paths into the specified port, and then retry.
7808	The number of LUNGroups on the specified port {"port- ID"} exceeds the maximum number of the LUNGroups ("maximum - number-of-LUNGroups- in-a-port") which can be created on the same port by processing this command.	Check the port or WWNGroup elements, and then retry.
7809	The number of WWNGroups on the specified port {"port-ID"} exceeds the maximum number of the WWNGroups ("maximum -number-of-WWNGroups-in-a-port") which can be created on the same port by processing this command.	Check the port or WWNGroup elements, and then retry.
7810	The specified nickname {"nickname"} is invalid. The maximum length of the nickname is {"maximum- length-of-a-nickname"} bytes.	Check the nickname, and then retry.
7811	The specified nickname {"nickname"} is invalid. It contains a forbidden character.	Check the nickname, and then retry.
7812	The specified nickname {"nickname"} is not available. This nickname is already used by the other LUNGroup on the same port.	Specify a nickname that is not used by other LUNGroups on the same port, and then retry.
7813	The specified nickname {"nickname"} is not available. This nickname is already used by another WWN/WWNGroup on the same port.	Specify a nickname that is not used by other WWN/WWNGroups on the same port, and then retry.
7814	The specified path {"objectID-of-path"} is not available. This path already belongs to another LUNGroup on the same port.	Specify a path that does not belong to other LUNGroups on the same port, and then retry.
7815	The specified WWN {"WWN"} is not available. This WWN already belongs to the other WWNGroup on the same port.	Specify the WWN which does not belong to other WWNGroups on the same port, and then retry.
7816	It is not possible to group paths that have different WWN securities each other. Paths that have same WWN securities or no WWN security must be specified.	Check the specification of paths, and then retry.
7817	It is not possible to group WWNs that is used by different paths each other. WWNs that are used by the same path(s) or are not used must be specified.	Check the specification of WWNs, and then retry.
7818	The specified path {"objectID-of-path"} is not a path on the port {"portID"}. Specify the path on the specified Port.	Check the relation between the port and the path, and then retry.
7819	The specified WWN is a member of WWNGroup. In order to secure/unsecure with WWNGroup, specify all WWNs that are members of the WWNGroup.	Specify all members of the WWNGroup or specify WWN that does not belong to the WWNGroup, and then retry.
7820	The specified HostStorageDomain includes the path belonging to the LUNGroup. This command does not support to secure/unsecure with path belonging to the LUNGroup.	Check that there is no path belonging to the LUNGroup in the HostStorageDomain to specify, and then retry.

7821	This operation for the WWN consisting a WWNGroup is not supported by specified API version.	Check the Hitachi HiCommand Device Manager Server XML API Manual and make sure that the running API version supports the command.
7822	The specified WWN {"WWN"} is not available. This WWN already belongs to the other HostStorageDomain on the same port.	Specify the WWN which does not belong to other HostStorageDomain on the same port, and then retry.
7823	The non-representative LDEV which constitutes LUSE was specified. LUSE cannot be created with specification of the non-representative LDEV.	Check the specified LDEVs.
7824	The non-representative LDEV which constitutes LUSE was specified. The path cannot be set to the non-representative LDEV.	Check the specified LDEV.
7825	The specified nickname {"nickname"} is not available. This nickname is already used by another WWN/HostStorageDomain on the same port.	Specify a nickname that is not used by other WWN/HostStorageDomain on the same port, and then retry.
7826	The specified nickname {"nickname"} is not available. This nickname is already used by another HostStorageDomain on the same port.	Specify a nickname that is not used by other HostStorageDomain on the same port, and then retry.
7840	The port specified already has the maximum number of LUNs.	No more LUNs can be specified on this port, select a different port to add LUNs.
7841	The HostStorageDomain specified already has the maximum number of LUNs.	No more LUNs can be specified on this HostStorageDomain. Select a different HostStorageDomain to add LUNs.
7842	The specified LU is not LUSE.	Check the specified LDEV.
7843	The specified LU is LUSE which has some LUNs. LUSE which has some LUNs cannot be deleted with the command "DeleteLUSE".	Check the specified LDEV.
8000	Inconsistency detected for storage array type {"array-type"}, serial no. {"serial-number"}. A refresh of the storage subsystem is recommended. Contact your system administrator if you are a local user.	The HiCommand Device Manager server may not contain the most current storage device information. A "refresh" should be performed. This is performed using GUI "refresh" capability or the "AddStorageArray" API call.
8001	Inconsistency detected for storage array type {"array-type"}, serial no. {"serial-number"}. A refresh of the storage subsystem is recommended. Contact your system administrator if you are a local user. The transport error code is {"errorcode"}.	The HiCommand Device Manager server may not contain the most current storage device information. A "refresh" should be performed. This is performed using GUI "refresh" capability or the "AddStorageArray" API call.

Table 1.11 Error Codes 9000-9999: CIM/WBEM Errors

Error Code	Description	Recommended Action
9000	An unspecified CIM Wbem service error was encountered.	Contact the Support Center.
9001	{“CIM-class-name”} class does not support {“method-name”} method.	Use another operation. If the used operation should be supported, contact the Support Center.
9002	An unspecified CIM Wbem service error was encountered. An attempt to find the {“class-name”} class failed.	Contact the Support Center.
9003	An unspecified CIM Wbem service error was encountered. {“stack-trace”}	Contact the Support Center.
9004	An unspecified CIM Wbem service error was encountered. The ACL users table is empty.	Check the server condition ACL users.
9005	An unspecified CIM Wbem service error was encountered. The ACL rules table is empty.	Check the server condition ACL rules.
9006	Authentication failed. username:{“user-name”}	Check the username and password, and then retry.
9007	The operation was denied. username:{“user-name”}, write request:{“whether-request-needs-write-permission”}	Check the username, password and user-authority, and then retry.
9008	The operation was not authorized. username:{“user-name”}, write request:{“whether-request-write-needs-write-option”}	Check the username, password and user-authority, and then retry.
9009	The {“requested-operation-name”} operation failed.	Follow the last related message. When there is no related message, contact the Support Center.
9011	An attempt to create CIM-Instance failed. Class:{“CIM-class-name”}, Key:{“key-properties”}, {“stack-trace”}	Contact the Support Center.
9012	An attempt to create CIM-ObjectPath failed. Class:{“CIM-class-name”}, Key:{“key-properties”}, {“stack-trace”}	Contact the Support Center.
9013	Invalid WQL. Property:{“property-name”}, Operator:{“operator((number))”, Value:{“value”}	Check the specified WQL or ObjectPath, and then retry.
9014	Unsupported WQL. Property:{“property name”}, Operator:{“operator(number)”, Value:{“value”}	Check the specified WQL or ObjectPath, and then retry.
9015	Not associated by this Association class. Source(Class:{“source-CIM-class-name”},Role:{“source-role”}) and Result(Class:{“result-CIM-class-name”},Role:{“result-role”})	This is an informational message only. No additional action is required.
9016	Not supported for result class of this Association class. {“class-name”}	Contact the Support Center.
9017	An invalid key property exists in ObjectPath. {“key-name”}	Check the specified ObjectPath, and then retry.
9018	An attempt to obtain a class name from ObjectPath failed. ObjectPath:{“ObjectPath”}	Check the specified ObjectPath, and then retry.
9019	Invalid WQL. wql:{“WQL”}	Check the specified WQL or ObjectPath, and then retry.
9020	Invalid class. class:{“class-name”}	Check the specified ObjectPath, and then retry.
9021	Invalid property. Property:{“property-name”} value:{“value”}	Check the specified WQL or ObjectPath, and then retry.
9022	Invalid role parameter. {“role”}	Check the specified role or resultRole, and then retry.
9023	Invalid parameter. When ResultClass is not specified, PropertyList cannot be specified.	Specify ResultClass, or do not specify PropertyList.

Table 1.12 Error Codes 10000-19999: Web Client Errors (continues on the following pages)

Error Code	Description	Recommended Action
10000	An error occurred while searching for LUNs.	Please contact the Support Center.
10001	Currently, there are commands being processed for subsystem <name>.	Please retry this action after the active commands are completed.
10002	Cannot Move Storage to a LogicalGroup which has different subsystem.	Please move storage to a Logical Group which contains storage in same subsystem.
10003	Currently, there are commands being processed for subsystem <name>.	Please retry this action after the active commands are completed.
10004	There are processing tasks still running on logical group <name>.	Please retry this action after the active commands are completed.
10005	There are processing tasks still running on storage subsystem <name>.	Please retry this action after the active commands are completed.
10006	Currently, there are commands being processed for subsystem <name>.	Please retry this action after the active commands are completed.
10007	Some LUSE volumes are selected. LUSE volumes cannot be moved to a LogicalGroup that has same ports as the source LogicalGroup.	Please do not select LUSE volumes, or select a Logical Group which has a different port than the source Logical Group.
10008	An empty logical group cannot be specified as the destination group for moving selected storage.	Please select a Logical Group which has a volume.
10009	HiCommand Device Manager Web Client internal error has occurred.	Please contact the Support Center.
10010	Subsystem is busy. Please retry this action after the previous action is completed.	Please retry this action after the previous action is completed.
10011	Subsystem is busy. Please retry this action after the previous action is completed.	Please retry this action after the previous action is completed.
10012	Subsystem is busy. Please retry this action after the previous action is completed.	Please retry this action after the previous action is completed.
10013	Subsystem is busy. Please retry this action after the previous action is completed.	Please retry this action after the previous action is completed.
10014	Subsystem is busy. Please retry this action after the previous action is completed.	Please retry this action after the previous action is completed.
10015	Subsystem is busy. Please retry this action after the previous action is completed.	Please retry this action after the previous action is completed.
10016	Subsystem is busy. Please retry this action after the previous action is completed.	Please retry this action after the previous action is completed
10017	Subsystem is busy. Please retry this action after the previous action is completed.	Please retry this action after the previous action is completed.
10018	Subsystem is busy. Please retry this action after the previous action is completed.	Please retry this action after the previous action is completed.
10019	Subsystem is busy. Please retry this action after the previous action is completed.	Please retry this action after the previous action is completed.
10020	Subsystem is busy. Please retry this action after the previous action is completed.	Please retry this action after the previous action is completed.
10021	Subsystem is busy. Please retry this action after the previous action is completed.	Please retry this action after the previous action is completed.

10022	Subsystem is busy. Please retry this action after the previous action is completed.	Please retry this action after the previous action is completed.
10023	Subsystem is busy. Please retry this action after the previous action is completed.	Please retry this action after the previous action is completed.
10024	Subsystem is busy. Please retry this action after the previous action is completed.	Please retry this action after the previous action is completed.
10025	Subsystem is busy. Please retry this action after the previous action is completed.	Please retry this action after the previous action is completed.
10026	Subsystem is busy. Please retry this action after the previous action is completed.	Please retry this action after the previous action is completed.
10027	Subsystem is busy. Please retry this action after the previous action is completed.	Please retry this action after the previous action is completed.
10028	Subsystem is busy. Please retry this action after the previous action is completed.	Please retry this action after the previous action is completed.
10029	Subsystem is busy. Please retry this action after the previous action is completed.	Please retry this action after the previous action is completed.
10030	Subsystem is busy. Please retry this action after the previous action is completed.	Please retry this action after the previous action is completed.
10031	Subsystem is busy. Please retry this action after the previous action is completed.	Please retry this action after the previous action is completed.
10032	Subsystem is busy. Please retry this action after the previous action is completed.	Please retry this action after the previous action is completed.
10033	The server is returning a Message ID that is used by a previous command.	If this error persists, please contact the Support Center.
10034	Delete alerts is in process. Please retry this action after the previous action is completed.	Please retry this action after the active action is completed.
10035	HiCommand was unable to communicate with the HiCommand Server.	Please check the network configuration.
10036	HiCommand Device Manager Web Client internal error has occurred.	Please contact the Support Center.
10037	A problem was encountered trying to download and install the server certificate. HiCommand is unable to access the HiCommand Server through the secure channel. Please contact your system administrator for assistance.	Please ask the system administrator if the Keystore file is located in correct location on the server machine.
10038	Unable to download resource files necessary for secure connection. Cannot continue. Click OK to exit the system.	Please check network configuration.
10039	HiCommand Device Manager Web Client internal error has occurred.	Please contact the Support Center.
10040	HiCommand Device Manager Web Client internal error has occurred.	Please contact the Support Center.
10041	HiCommand Device Manager Web Client internal error has occurred.	Please contact the Support Center.
10042	HiCommand Device Manager Web Client internal error has occurred.	Please contact the Support Center.
10043	HiCommand Device Manager Web Client internal error has occurred.	Please contact the Support Center.
10044	HiCommand Device Manager Web Client internal error has occurred.	Please contact the Support Center.

10068	HiCommand Device Manager Web Client internal error has occurred.	Please contact the Support Center.
10069	HiCommand Device Manager Web Client internal error has occurred.	Please contact the Support Center.
10070	HiCommand Device Manager Web Client internal error has occurred.	Please contact the Support Center.
10071	HiCommand Device Manager Web Client internal error has occurred.	Please contact the Support Center.
10072	HiCommand Device Manager Web Client internal error has occurred.	Please contact the Support Center.
10073	A user is not permitted to log in as Peer.	Please log in not as Peer.
10074	Since the version of JRE is old, Web Client cannot be started. The version of JRE which is operating now is <JRE version>.	Please select JRE version 1.3 or later.
10075	The Logical Group that you have selected no longer exists.	Please open another window, then come back to the original window. If this error persists, please contact the Support Center.
10076	The Storage Array that you have selected no longer exists.	Please contact the Support Center.
10077	Storage cannot be added to the Home of user group <name>.	Please add the storage to the Logical Group which is not configured as the Home of user group.
10078	Cannot parse "<value>" into a floating point number.	If this error persists, please contact the Support Center.
10079	No LU is selected.	Please continue process after selecting the storage.
10080	Invalid URL	Please check the network configuration. If you want to launch Storage Navigator or Dynamic Link Manager, please check if the selected application is working properly.
10081	HiCommand cannot modify the logical group because no logical group has been selected.	Please continue operation after a logical group is selected.
10082	A logical group cannot be deleted if it or a child group has already been allocated to a user group. The user group must be deleted first.	Please retry operation after deleting the user group.
10083	HiCommand cannot delete the logical group because no logical group has been selected.	Please continue operation after a logical group is selected.
10084	Storage cannot be moved to the Home of user group <name>.	Please move the storage to the Logical Group which is not configured as the Home of user group.
10085	HiCommand cannot proceed to the next step because no logical group is selected.	Please continue operation after a logical group is selected.
10086	There was an error adding a new host.	Please contact the Support Center.
10087	Currently, there are commands being processed for subsystem <name>.	Please continue operation after the active process is finished.
10088	Currently, there are commands being processed for subsystem <name>.	Please continue operation after the active process is finished.
10089	HiCommand Device Manager Web Client internal error has occurred.	Please contact the Support Center.
10090	At least one port must be set. Use the "Add Port" button to add new ports before deleting the ones selected.	Please use the "Add Port" button to add new ports.
10091	All of the disks in an array group must be in the same row and chassis.	Please select disks which are located in the same row and chassis.
10092	You must select at least two (2) disks to create an array group.	Please select at least two disks.

10093	All of the disks in an array group must be next to one another.	Please select disks located next to each other (contiguous).
10094	You cannot delete the user who is currently logged on.	Please log in as another System administrator or Local System administrator to delete the specified user.
10095	You have asked to permanently delete the last <user group> user. There must always be at least one user of this type for HiCommand to work.	Please delete the specified user after creating one or more users.
10096	HiCommand Device Manager Web Client internal error has occurred.	Please contact the Support Center.
10097	HiCommand Device Manager Web Client internal error has occurred.	Please contact the Support Center.
10098	Inconsistent properties found in the logical group "name".	Please contact the Support Center.
10099	No storage is selected.	Please retry operation after the storage is selected.
10100	The Storage Array is not selected!	Please retry operation after the storage subsystem is selected.
10101	This user group name already exists. Select a different name.	Please select a user group name which is not duplicated.
10102	Duplicate User Name	Please select a user name which is not duplicated.
10103	Your user ID or password is invalid, please check with the Administrator.	Please confirm your user ID and password with the Administrator.
10104	HiCommand has lost the network connection to the HiCommand Server. This might be due to a network problem or the server may be down. HiCommand will now exit. Please check your network connection and try again.	Please check if HiCommand Device Manager is running properly. Please also check network condition.
10105	HiCommand has lost the network connection to the HiCommand Agent. This might be due to a network problem or the agent may be down.	Please check if HiCommand Device Manager Agent is running properly. Please also check network condition.
10106	The HiCommand Server Certificate has expired. HiCommand will now exit. Please contact your system administrator for assistance.	Please contact the system administrator.
10108	The requested service is not currently implemented on the HiCommand Server.	Please go to the [help]- [index] in menu bar to check if the versions of server and web client match.
10109	An unexpected error occurred in the HiCommand Client	Please contact the Support Center.
10110	An unexpected error occurred in the HiCommand Server	Please contact the Support Center.
10111	HiCommand Device Manager Server received bad request.	Please contact the Support Center.
10112	HiCommand Device Manager Server received too large request.	Please contact System administrator to resize the maximum size of acceptable request for HiCommand Device Manager server.
10113	HiCommand Device Manager Server is shutting down now.	Please contact System administrator.
10114	HiCommand Device Manager Server cannot find files to be downloaded.	Please contact the Support Center.
10116	The requested service is not currently implemented on the HiCommand Agent.	Please check if version combination of Agent and Web Client is correct.
10117	An unexpected error occurred in the HiCommand Client.	Please contact the Support Center.
10118	An unexpected error occurred in the HiCommand Client.	Please contact the Support Center.
10119	HiCommand Device Manager Agent received bad request.	Please contact the Support Center.
10120	HiCommand Device Manager Agent received too large request.	Please contact System administrator to resize the maximum size of acceptable request for HiCommand Device Manager server.
10121	HiCommand Device Manager Agent is shutting down now.	Please contact System administrator.

10122	HiCommand Device Manager Agent cannot find files to be downloaded.	Please contact the Support Center.
10123	Missing host in message response.	Please contact the Support Center.
10124	Missing HostInfo in message response.	Please contact the Support Center.
10125	Parent Group "<name>" was deleted in a previous command.	Please select another logical group for the parent group.
10126	The new parent group already contains storage.	Please select another logical group for the parent group.
10127	Group Name is duplicated!	Please select another group name.
10128	The Group Name "<name>" is reserved!	Please select another group name.
10129	The parent group is busy.	Please retry this action after the active action is completed.
10130	Login process to HiCommand Device Manager Server is failed. Web Client is shutting down now since there is a possibility of having network problem. Please re-connect after checking network connectivity.	Please check if HiCommand Device Manager is running properly. Please also check network condition.
10131	Failed to receive messages from HiCommand Device Manager Server. Web Client is shutting down now since there is a possibility of having network problem. Please re-connect after checking network connectivity.	Please check if HiCommand Device Manager is running properly. Please also check network condition.
10132	Failed to receive messages from HiCommand Device Manager Server. Web Client is shutting down now since there is a possibility of having network problem. Please re-connect after checking network connectivity.	Please check if HiCommand Device Manager is running properly. Please also check network condition.
10133	Failed to receive command result from HiCommand Device Manager Server. Web Client is shutting down now since there is a possibility of having network problem. Please re-connect after checking network connectivity.	Please check if HiCommand Device Manager is running properly. Please also check network condition.
10134	The password you entered was not correct. You will not be permitted to continue this operation.	Please check password.
10135	More than **number** of disks cannot be defined as spare disks of this subsystem.	Please select fewer spare disks than specified.
10136	Subsystem is busy. Please retry this action after the previous action is completed.	Please continue operation after the active process is finished.
10137	Subsystem is busy. Please retry this action after the previous action is completed.	Please continue operation after the active process is finished.
10138	A HiCommand Device Manager Server internal error has occurred.	Please contact the Support Center.
10139	A HiCommand Device Manager Server internal error has occurred.	Please contact the Support Center.
10140	"<program>" cannot be started up.	Please contact System administrator.
10141	Subsystem is busy. Please retry this action after the previous action is completed.	Please continue operation after the active process is finished.
10142	Subsystem is busy. Please retry this action after the previous action is completed.	Please continue operation after the active process is finished.
10143	Less than one WWN exists in the WWN Group "<group>". Make sure that more than one WWN exists in the WWN Group.	Add two or more WWNs to the WWN group.
10144	No LUNs exist in the LUN Group "<group>". Make sure that more than one LUN exists in the LUN Group.	Add one or more LUNs to the LUN group.

1.3 Storage Subsystem Error Messages

Some messages displayed by Device Manager contain, as a part of the message, a message output from the storage subsystem. This section lists and describes the error messages from the storage subsystems which are contained in the HiCommand Device Manager messages.

- Lightning 9900™ V Series messages (see section 1.3.1),
- Lightning 9900™ messages (see section 1.3.2), and
- Thunder 9500™ V Series and Thunder 9200™ messages (see section 1.3.3).

1.3.1 Lightning 9900™ V Series Messages

When a Device Manager message contains a message from the Lightning 9900V, the Device Manager displays two types of error code identifying the Lightning 9900V messages and the message text. Table 1.13 lists and describes the Lightning 9900V messages which are displayed by HiCommand Device Manager.

Note: The list of messages below shows error code 1 and 2, separated by comma. The asterisk “*” indicates that the error code output varies.

Table 1.13 Lightning 9900V Messages (continues on the following pages)

Error Code	Description	Recommended Action
* *	HiCommand Device Manager cannot identify this type of error from the subsystem.	If the problem persists, contact the Support Center.
3,1002	You have set the Command Device for the volume to be used by TrueCopy or ShadowImage.	Review the settings.
3,1003	You have attempted to specify more than one Path from one Group to the same volume.	Review the settings.
3,1004	You have attempted to set more than one volume for one Port/GroupID/LUN combination.	Review the settings.
3,1005	When you change the Path configuration, you cannot specify for the following volumes. 1. The volumes that have not been implemented. 2. The volumes other than the top volume of the LUSE. 3. HIHSM Reserve Volumes 4. "On-Demand" volumes.	Review the settings.
3,1007	You have attempted to delete the last Path to TrueCopy volume or ShadowImage volume.	Correct the LU Path settings, and issue a request to set the configuration information again.
3,1009	The emulation type of the volume to be connected as a part of a LUSE is not Open volume.	Review the settings.
3,1010	You have attempted to set a LUSE that includes a LU that has already been extended.	Review the settings.
3,1011	The volumes to be connected as a LUSE extend across CU#.	Review the settings.
3,1012	A LU Path is set for the volumes to be connected as a LUSE.	Review the settings.
3,1013	The emulation types of the volumes to be connected as a LUSE are not the same.	When specifying volumes as a LUSE, you must use volumes with the same emulation types, sizes, and attributes (you cannot specify Normal Volume and Customized Volume together.).

3,1015	A LU Path is set for the LUSE to be released.	Remove the Path for the target volume before releasing the LUSE.
3,1018	The Port for which you have specified to change the configuration does not exist.	You may have specified a Port that has not been implemented, or a Mainframe Port. Review the specified Port.
3,1020	An invalid LUN has been specified.	Review the settings.
3,1021	The specified volume does not exist.	You may have specified a volume that has not been implemented, or a Mainframe volume. Review the specified volume.
3,1022	An invalid Host Mode has been specified.	Review the settings.
1010,1023	An invalid Fibre Address has been specified.	Review the settings.
3,1024	Invalid Fibre Topology information has been specified.	Review the settings.
3,1025	The specified LU Path does not exist.	Review the settings.
3,1027	You have specified an invalid value in the Command Device settings.	Review the settings.
3,1028	The maximum number of volumes that can be connected as a LUSE has been exceeded. (MAX 36).	Review the settings.
3,1029	The volumes you have tried to connect as a LUSE do not have the same volume size. Or, you have tried to connect a Customized Volume and a Normal Volume together.	When specifying volumes as a LUSE, you must use volumes with the same emulation types, sizes, and attributes (you cannot specify Normal Volume and Customized Volume together.).
3,1035	You did not set the required Subsystem ID when you performed a CVS operation. (INSTALL CV/Volume Initialize)	Set the Subsystem ID required for adding a volume, and issue a request to change the configuration again. (Note that you can either specify Boundary with 64 or 256.) For more details, contact the Support Center.
3,1036	When specifying the Customized Volume, you have specified the size that is outside the legal value range. (The value specified is either less than the minimum value or greater than the maximum value.)	Note that the legal value range may differ depending on the emulation type of the target volume.
3,1037	There is not enough space left in the Logical Parity Group to create a CV.	When you specify the value, consider the fact that the number of LDEVs that can be stored in a PG may vary depending on a Drive Type and a RAID Type. For more details, contact the Support Center.
3,1038	You have specified emulation types for CV that cannot be used together. Or, you have specified the emulation types that are not supported.	Since each emulation type has a different definition, contact the Support Center for more details.
3,1039	When you perform CVS operations, you cannot specify for the following volumes. 1. The volumes to which LU Path is set. 2. The volumes which are connected as an expanded LU. 3. The volumes where LDEV Security is set.	Review the target volume.
3,1040	An internal logical error has occurred.	Contact the Support Center.
3,1041	The CU number or the LDEV number specified in the CVS operation is already used by other volumes.	Review the settings.
3,1043	You have instructed to perform an CVS operation on a Logical Parity Group which has not been implemented.	Review the settings.
3,1044	When you performed a CVS operation (Volume Initialize), the number of volumes to be returned to Normal Volumes and the number of volumes requested by Volume Initialize were not the same.	Review the settings.

3,1045	The specified Subsystem ID already exists.	Review the settings.
3,1049	When you performed a CVS operation (Volume Initialize), you did not specify a CV within the Logical Parity Group.	Review the settings.
3,1050	When you change the configuration for a LUSE, you cannot specify for the following volumes. 1. HIHSM (hierarchy control function) Reserve volumes 2. "On-Demand" volumes	Review the settings.
3,1051	You have specified an incorrect emulation type in the CVS operation.	Review the settings.
3,1059	You have set LUN Management Function (LUN Security) for a Port that is not a Fibre Port.	Review the settings.
3,1061	You have attempted to perform a LUN Security operation on the Port for which LUN Security Function is disabled.	Switch on the Security.
3,1062	When you performed a CVS operation, you specified a wrong emulation type of a volume, and the way in which the size of the volume is specified does not correspond to its emulation type.	Specify the user-defined Cylinder number for Mainframe volumes, and specify user-defined size for Open volumes.
3,1063	You have attempted to register an existing WWN number.	Review the settings.
1110,1064	You have attempted to register an existing WWN.	Review the settings.
3,1065	You have attempted to register an existing WWN nickname or an existing Host Group nickname.	Review the settings.
1110,1065	You have attempted to register an existing WWN nickname or an existing Host Group nickname.	Review the settings.
3,1066	You have specified a WWN number that has not been registered (at the time of deletion or modification)	Review the settings.
3,1067	You have attempted to register an existing Host Group number.	Review the settings.
3,1068	You have specified an unregistered Host Group.	Review the settings.
3,1074	The CU you have specified when performing the CVS operation (Install CV) is invalid.	Review the settings.
3,1075	You have specified different types of CVS operations (Volume Initialize, Install CV, Volume to Space) in a single request to set the configuration information.	Specify one of the operation types when performing a CVS operation.
3,1101	You have requested a CVS operation for a volume that has not been implemented.	Review the settings.
3,1102	At least one LDEV is required in a Parity Group, so further reduction is impossible.	Review the settings.
3,1103	You have instructed to perform a CVS operation on the Parity Group, which has not been implemented.	Review the settings.
3,1104	You have tried to specify a SubSystem ID without performing a CVS operation.	Issue a request to change the SubSystem ID when you perform a CVS operation.
3,1105	You have specified a value larger than the maximum value allowed for LDEV ID in a CVS operation. (MAX.CU:0-31/LDEV:0-255)	Consider the fact that the value allowed for LDEV ID (the maximum value for CU) depends on the implemented size for SM. For more details, contact the Support Center.
3,1108	When you change the configuration for Command Device, you cannot specify for the following volumes. 1.HIHSM Reserve volumes 2. "On-Demand" volumes 3. Volumes other than Open volumes (including the volumes not yet implemented)	Review the volume to which the Command Device is set.
1110,1110	You have specified invalid characters in the Host Group nickname or the WWN nickname.	You cannot use \/:;:*?"'<> , and you cannot place a blank at the top or at the end of the string.

3,1111	You did not specify a nickname when you issued a request to change the configuration for LUN-Security.	Make sure to specify a Host Group nickname.
3,1113	The volume you have tried to create in the CVS operation is currently used to provide the HPAV function.	Change the specified volume ID, or release the HPAV settings.
3,1116	You did not specify a value when you registered the WWN. Or, you specified 0 for the WWN value.	Make sure to specify the WWN value before issuing a request to change the configuration.
3,1123	You have requested to set the Command Device Security, but the Command Device has not been set to the volume.	You need to set the Command Device to the volume before or at the same time you set the Command Device Security.
3,1124	There is an error in the Command Device/Command Device Security settings. You cannot do the following on the same volume. 1.Setting the Command Device + Releasing the Command Device Security 2.Releasing the Command Device + Setting the Command Device Security	Review the settings.
3,1125	There are no Host Groups to which the WWN is registered.	Review the settings.
3,1126	Some volumes, which you have tried to connect as a LUSE, have the Command Device settings.	Review the settings.
3,1127	You have specified CHA high speed mode, but the CHA has not been implemented.	Review the Channel Package.
3,1128	You have requested to change the channel speed, but the version of Fiber PCB is not supported.	Review the Channel Package.
3,1129	When you registered the WWN in the LUN-Security operation, the maximum number of WWN that can be registered (MAX 255) was exceeded.	Review the settings.
3,1130	When registering the Host Group nickname and the WWN nickname, you specified an invalid nickname. (xx-G00: xx is a Port name, such as 1A, 1B)	Review the settings.
3,1131	When setting the Host Group (add/change/delete), you specified a value larger than the maximum value (0 to 127) allowed for the Port.	Review the settings.
3,1132	When setting the WWN (add/change), you specified a value larger than the maximum value (0 to 254) allowed for the Port.	Review the settings.
3,1133	When setting the Host Mode, you specified a value for Host Group ID that is larger than the maximum value allowed for the Port.	Review the settings.
3,1134	When setting the Path (add/change), you specified a value larger than the maximum value allowed for the Port. (When Security Switch is OFF:256 / When Security Switch is ON: 512)	Review the settings.
3,1135	When setting the Port Information (Fibre Address/Fibre Topology/Channel Speed), you provided more than one instruction to make changes to the same Port.	Multiple configurations are specified for the port for which you attempted to change the configurations.
3,1136	When setting CHA high speed mode, you provided more than one instruction to make changes to the same Port.	Review the settings.
3,1137	When setting LUSE, you specified a value larger than the maximum value allowed in DKC (MAX. 4096).	Review the settings.
3,1140	You cannot change it as it has the settings for Port Group.	Release the settings for Port Group.
3,1142	The specified LDEV cannot be changed as it has LDEV Security Settings.	Release the LDEV Security settings for the LDEV, and then specify the LDEV again.
3,1143	This error normally does not occur. Contact the party who created the program.	This error normally does not occur. Contact the party who created the program.

3,1144	The LDEV on which you have specified to perform a CVS operation is specified to be a LUSE.	Release the LUSE settings for the LDEV, and then respecify the LDEV on which the CVS operation is performed.
3,1154	When specifying OPEN-V, you specified a volume with a different size including LUSE.	This error normally does not occur. Contact the party who created the program.
3,1156	When specifying OPEN-V, you specified a volume with different CU including LUSE.	Review the settings.
3,1159	When specifying OPEN-V, you specified more than 2[TB] of size of a volume including LUSE.	Review the settings.
3,1169	You have specified the same Logical PG for the old settings and the new settings where both settings exist.	This error normally does not occur. Contact the party who created the program.
3,1180	You have specified System-LU and other LUs with 1 PDU.	Review the settings.
3,1181	You have specified to add a Path to a volume with a Remote Copy Pair, but the Path cannot be added.	Review the settings.
3,1182	You have attempted to set more than 2TB for LUSE.	Review the settings.
3,1183	You have attempted to set Point to Point for a high speed mode PCB port.	Review the settings.
3,1184	In the high speed mode, you have attempted to set a Fiber Address that already exists.	Review the settings.
3,1201	You have specified CHA high speed mode, but some Paths you have specified cannot be set to high speed mode. (CHA SPEED is not always the same)	Review the settings.
3,1203	You have specified CHA high speed mode, but some Fiber Addresses of the Port you have specified cannot be set to high speed mode. (Fibre Address is always the same)	Review the settings.
3,1204	You have specified CHA high speed mode, but some Fibre Topologies of the Port you have specified cannot be set to high speed mode. (not all are specified to use FC-AL)	Review the settings.
3,1350	Since the Port to which you have tried to set the Path is a Port for Fibre TrueCopy, you cannot use it.	In order to be able to set the path, change the attribute of the port. (Change the attribute to TarGet or RCU TarGet.)
3,1351	Some Ports to which you have tried to set the CHA high speed mode have different attributes.	When specifying CHA high speed mode, set the same attribute to all the Ports.
3,1352	Since the logical Path for Fibre TrueCopy is set to the port you have tried to specify, you cannot change it.	Release the logical Path, and then issue a request to change the configuration again.
3,1353	Since the S-VOL logical Path is set to the Port you have tried to specify, you cannot change it.	Delete the S-VOL logical Path that is set to RCU TarGet Port, and then specify the settings. Issue a request to change the configuration again.
3,1354	Since the Port you have tried to set has an Initiator attribute, you cannot change it.	Change the attribute of the Port. (Change the attribute to TarGet or RCU TarGet.)
3,1355	Since the Port you have tried to set has an Initiator attribute, you cannot change it.	Change the attribute of the Port. (Change the attribute to TarGet or RCU TarGet.)
3,1356	Since the Port you have tried to set has an Initiator attribute, you cannot change it.	Change the attribute of the Port. (Change the attribute to TarGet or RCU TarGet.)
3,1357	Since the Port you have tried to set is a port used for Fibre TrueCopy, you cannot set it.	After deleting the logical Path, set it again.
3,1600	The program that allows you to use the functions of LUN Management is not installed. Alternatively, the program is no longer available as it has expired.	Install the required program. (Since there are three different series of programs, after the program has expired, you may not be able to install another one.)

3,1601	The program that allows you to use the functions of Open Volume Management is not installed. Alternatively, the program is no longer available as it has expired.	Install the required program. (Since there are three different series of programs, after the program has expired, you may not be able to install another one.)
3,1602	The program that allows you to use the functions of Volume Management is not installed. Alternatively, the program is no longer available as it has expired.	Install the required program. (Since there are three different series of programs, after the program has expired, you may not be able to install another one.)
3,1603	The program that allows you to use the functions of Open Cache Management is not installed. Alternatively, the program is no longer available as it has expired.	Install the required program. (Since there are three different series of programs, after the program has expired, you may not be able to install another one.)
4105,1603	The program that allows you to use the functions of Open Cache Management is not installed. Alternatively, the program is no longer available as it has expired.	Install the required program. (Since there are three different series of programs, after the program has expired, you may not be able to install another one.)
3,1604	The program that allows you to use the functions of Cache Management is not installed. Alternatively, the program is no longer available as it has expired.	Install the required program. (Since there are three different series of programs, after the program has expired, you may not be able to install another one.)
3,2002	You have failed to establish a communicating connection between the DKCs (SVPs).	Review the LAN settings. If the problem persists after reviewing the settings, contact the Support Center.
3,2003	You have failed to retrieve the configuration information.	Check for SVP if the status of DKC is normal. If the problem persists after checking the status, contact the Support Center.
3,2004	The files required by the application cannot be loaded.	Since it is likely that there is not sufficient memory, reboot SVP, and then retry. If the problem persists after reviewing the settings, contact the Support Center.
3,2005	The amount of memory required by the application cannot be secured.	Since it is likely that there is not sufficient memory, reboot SVP, and then retry. If the problem persists after reviewing the settings, contact the Support Center.
3,2009	The version of Micro-Program in SVP and the version of Micro-Program in DKC are not the same.	Review the versions of Micro-Programs in SVP and DKC.
3,2010	The host for the target Path/volume may be generating I/O.	Check if the host for the target Path/volume is generating I/O.
3,2011	Check the status of DKC (if it is blocked or not).	If the problem persists after reviewing the settings, contact the Support Center.
3,2012	A Port blockage error has occurred.	Contact the Support Center.
3,2013	A download error has occurred.	Contact the Support Center.
3,2014	A Port recovery error has occurred.	Contact the Support Center.
3,2015	A communication error occurred between SVP and DKC.	Revise the LAN settings. If the problem persists after revising the settings, contact the Support Center.
3,2016	A SNMP user or maintenance staff is accessing the system in Modify mode.	Wait for a while, and then retry.
3,2017	Lock has been released.	After obtaining Lock, change the configuration again.
3,2022	A CVS process is being performed in DKC.	Wait for a while and issue a request to change the configuration again.
3,2033	The system is in the process of initial start-up, or internal refresh.	Wait for a while and issue a request to change the configuration again.
3,2081	An error has occurred during the CVS increase/decrease process.	Contact the Support Center.

3,2082	It is being mounted by a host, or the cluster configuration option has been selected.	Since it is being mounted by a host, or the cluster configuration option is being selected, cancel these states.
3,2083	An error has occurred during the process to change the configuration on the DKC.	Check the status of DKC for the current configuration settings. If necessary, perform the set up operation again.
3,2084	The result of changing the configuration is unknown.	Check the status of DKC for the current configuration settings. If necessary, perform the set up operation again.
3,2085	An error has occurred during the precheck of a CVS operation. (While performing COPY of TrueCopy/ShadowImage)	Wait a while, and then retry.
3,2086	An error has occurred during the precheck of a CVS operation. (The configuration for TrueCopy/ShadowImage has been defined.)	Release the configuration definition of TrueCopy/ShadowImage, and then retry.
3,2087	An error has occurred during the precheck of a CVS operation. (Vary Online has been issued from Mainframe host.)	Issue Vary Offline from the Mainframe host you are connected to.
3,2088	An error has occurred during the precheck of a CVS operation. (TrueCopy is being suspended.)	Add an alternative Path.
3,2089	An error has occurred during the precheck of a CVS operation. (The specified CHA may include the last path between MCU and RCU of TrueCopy.)	Check that there is an alternative path from MCU first.
3,2090	An error has occurred during the precheck of a CVS operation. (The ShadowImage option has been set.)	Release the settings for ShadowImage, or stop the I/O and then try again.
3,2091	An error has occurred during the precheck of a CVS operation. (The back up server for ShadowImage is running.)	Stop the backup server, and then retry.
3,2092	An error has occurred during the precheck of a CVS operation. (A ShadowImage Pair is included.)	Separate the ShadowImage Pair.
3,2093	An error has occurred during the precheck of a CVS operation. (A ShadowImage Pair is included.)	Resynchronize the ShadowImage Pair.
3,2094	An error has occurred during the precheck of a CVS operation. (A ShadowImage Pair is included.)	Change the ShadowImage volume to Simplex.
3,2095	An error has occurred during the precheck of a CVS operation. (A maintenance related operation is being performed.)	Wait for a while, and then retry.
3,2096	An error has occurred during the precheck of a CVS operation. (The function is not supported on the main side. The specified function is not supported.)	Contact the Support Center.
3,2097	The specified WWN is doing I/O, or you have issued a request to an unregistered WWN or a WWN used by a group.	Review the specified WWN and check if it has been registered or not, release from the Host Group, or stop the I/O from the host. Then try again.
2,2013	Requests to change the configuration for different P.P.s have been received at the same time.	Review the settings, and then retry.
3,2170	The I/O during running Extended Copy Manager may not have been stopped.	Stop the I/O during running Extended Copy Manager.
3,3000	The system has failed to retrieve a pointer from an external function that is required within the application.	Try again after rebooting SVP. If the problem persists, contact the Support Center.
3,3001	The system has failed to retrieve a pointer from an external function that is required within the application.	Try again after rebooting SVP. If the problem persists, contact the Support Center.
3,3002	The interfaces between the applications are inconsistent.	Try again after rebooting SVP. If the problem persists, contact the Support Center.

3,3003	An unexpected error has occurred.	Try again after rebooting SVP. If the problem persists, contact the Support Center.
3,3004	The process to manage the configuration information has failed.	Try again after rebooting SVP. If the problem persists, contact the Support Center.
3,3005	The process to manage the configuration information has failed.	Try again after rebooting SVP. If the problem persists, contact the Support Center.
3,3006	An error occurred in accessing the file that is required within the application.	Try again after rebooting SVP. If the problem persists, contact the Support Center.
3,3007	An interface logical error within the application has been detected. Or, an unregistered error has occurred.	Contact the Support Center.
1,4002	There is no data in the authorization file, so login failed.	It is necessary to register the authorization data. Contact the Support Center.
1,4003	Login failed. The inputted user ID is incorrect.	Input a correct user ID, and then retry.
1,4004	Login failed. The inputted password is incorrect.	Input a correct password, and then retry.
*,4011	There is no RMI object or forcible logoff was carried out.	Attempt to login again.
*,4012	The maximum number of RMI connections was exceeded.	The maximum number of users are logged on. Wait for a while, and then retry.
*,4020	The lock was canceled by force.	The lock was cancelled. You need to re-lock.
405,5047	An error has occurred during INSTALL/DEINSTALL operation.	If the problem persists, contact the Support Center.
405,5070	P.P. code is not matching.	Check the P.P. code, and then retry.
*,5132	The user of a same name has already logged in.	Login again using the other user name.
*,5510	This subsystem is under configuring or maintenance. Wait for a while, and then retry.	Wait for a while, and then retry.
*,5511	P.P. required for this function is not installed.	Install P.P. required for this function, and then retry.

1.3.2 Lightning 9900™ Messages

Table 1.14 lists and describes the Lightning 9900™ messages which are displayed by HiCommand Device Manager.

Table 1.14 Lightning 9900™ Messages (continues on the following pages)

Error Code	Description	Recommended Action
1	Normal end	None.
2	Processing (busy)	None.
1000	The setting requests for Host Modes 0xN1 and 0xN2 (N: the four high-order bits can be any value) are not identical on the corresponding Ports of cluster-1 and cluster-2. (The corresponding Ports of both clusters were not set at the same time.)	Correct the Host Mode specification and issue the configuration information setting request again.
1002	An attempt was made to set the TrueCopy volume or ShadowImage volume as the command device.	Correct the command device specification and issue the configuration information setting request again.
1003	An attempt was made to set multiple Paths from a single Port to the same volume.	Correct the LU Path specification and issue the configuration information setting request again.
1004	An attempt was made to set multiple volumes for a single Port/SCSI ID/LUN combination.	Correct the LU Path specification and issue the configuration information setting request again.
1005	An attempt was made to define a Path to a volume other than the top volume of the LUSE.	Correct the LU Path specification and issue the configuration information setting request again.
1007	An attempt was made to delete the last Path to the TrueCopy volume or ShadowImage volume.	Correct the LU Path specification and issue the configuration information setting request again.
1008	An attempt was made to set a volume for which no LU Path is defined, as the command device. Or, an attempt was made to delete the last Path to the command device.	Correct the LU Path specification and issue the configuration information setting request again.
1009	The emulation type of the volume to be linked as an LUSE is not Open volume.	Correct the LUSE specification and issue a configuration information setting request.
1010	An attempt was made to set an LUSE that contains an LU that has already been extended.	Correct the LUSE specification and issue a configuration information setting request.
1011	The volume to be linked as an LUSE extends over CU#.	Correct the LUSE specification and issue a configuration information setting request.
1012	An LU Path was set for the volume to be linked as an LUSE.	Correct the LUSE specification and issue a configuration information setting request.
1013	The emulation types of volumes to be linked as an LUSE are not the same.	Correct the LUSE specification and issue a configuration information setting request.
1014	No LU Path was set for the LUSE. (No Path was set for the LUSE to be added. Or, the Path for the LUSE no longer exists because it was deleted.)	Correct the LUSE specification and issue a configuration information setting request.
1015	An LU Path was set for the LUSE to be freed. (The Path must be freed at the same time as the LUSE is freed.)	Correct the LUSE specification and issue a configuration information setting request.
1018	The specified Port does not exist (specified Port number is incorrect) or is a type (for Mainframes only) that cannot be processed by the agent.	Correct the specification and issue the request again.
1019	The SCSI ID is invalid. (The specified value is outside the specifications.)	Correct the specification and issue the request again.
1020	The LUN is invalid. (The specified value is outside the specifications.)	Correct the specification and issue the request again.

1021	The specified volume does not exist (specified CU#:LDEV# is incorrect) or is a logical device of a type (for Mainframes only) that cannot be processed by the agent.	Correct the specification and issue the request again.
1022	The Host Mode is invalid. (The specified value is outside the specifications.)	Correct the specification and issue the request again.
1023	The Fibre Address is invalid. (The specified value is outside the specifications.)	Correct the specification and issue the request again.
1024	The Fibre Topology information is invalid. (The specified value is outside the specifications.)	Correct the specification and issue the request again.
1025	The specified LU Path does not exist. (The specified Path control index is incorrect.)	Correct the specification and issue the request again.
1027	The command device specification is invalid. (The specified value is outside the specifications.)	Correct the specification and issue the request again.
1028	The number of volumes to be linked as an LUSE is outside the specifiable range. Or, not all LDEVs that make up the LUSE to be freed were specified.	Correct the specification and issue the request again.
1029	The sizes of the CVs to be linked as an LUSE are not the same. Or, an attempt was made to link a CV and Normal Volume.	Correct the specification and issue the request again.
1035	The Subsystem ID required for CVS operation was not set.	Correct the specification and issue the request again.
1036	The CV size is outside the specifiable range (smaller than the minimum value or larger than the maximum value).	Correct the specification and issue the request again.
1037	There is no capacity for creating the CV remaining in the Parity Group.	Correct the specification and issue the request again.
1038	Objects that cannot be mixed were specified as the emulation type of CV.	Correct the specification and issue the request again.
1039	An attempt was made to operate CVS for a volume for which a LU Path is set, a volume for which the LU is extended, or a volume for which LDEV Security is set.	Correct the specification and issue the request again.
1041	The CU number or LDEV number specified for CVS operation is the same as that for another volume.	Correct the specification and issue the request again.
1044	At CVS operation (Volume Initialize), the number of volumes to be reset to Normal Volume is different from the number of volumes requested for Volume Initialize.	Confirm the number of Normal Volumes to be reset and issue the request again.
1045	The specified Subsystem ID is the same as an existing Subsystem ID.	Correct the specification and issue the request again.
1047	An error occurred during CVS expansion or reduction.	Issue the same CVS specification again.
1049	At CVS operation (Volume Initialize), CV was not set in the target Parity Group.	Correct the specification and issue the configuration information setting request again.
1050	The volume to be linked as an LUSE contains a reserve volume of HIHSM (hierarchy control function).	Correct the specification and issue the request again.
1051	The emulation type specified for CVS operation is incorrect.	Correct the specification and issue the request again.
1052	An attempt was made to include a WWN which is already included in a group in another WWN group.	Correct the WWN group specification and issue the configuration information setting request again.
1053	An attempt was made to group together WWNs that have different access permission set.	Correct the WWN group specification and issue the configuration information setting request again.
1055	An attempt was made to set access permission for a LUN included in a LUN group.	Correct the access permission for the LUN and issue the configuration information setting request again.

1056	An attempt was made to set access permission for WWN included in a WWN group.	Correct the access permission for the WWN and issue the configuration information setting request again.
1057	An attempt was made to include a LUN which is already included in a group in another LUN group.	Correct the LUN group specification and issue the configuration information setting request again.
1058	An attempt was made to group together LUNs that have different access permission set.	Correct the LUN group specification and issue the configuration information setting request again.
1059	An attempt was made to operate LUN Security for a Port that is not a Fibre Port.	Correct the specification and issue the configuration information setting request again.
1060	An attempt was made to operate LUN Security for a LUN that has no LU Path.	Correct the specification and issue the configuration information setting request again.
1061	An attempt was made to operate LUN Security for a Port on which the LUN Security function has no effect.	Correct the specification and issue the configuration information setting request again.
1062	The emulation type and a size appropriate to the emulation type specified when setting Install CV are incorrect. (Specify a user-specified capacity for a Mainframe volume. Specify a user-specified number of cylinders for an Open volume.)	Correct the specification and issue the request again.
1063	An attempt was made to register the same WWN number as one that is already registered.	Correct the specification and issue the configuration information setting request again.
1064	An attempt was made to register the same WWN as one that is already registered.	Correct the specification and issue the configuration information setting request again.
1065	An attempt was made to register the same WWN nickname or WWN group nickname as one that is already registered. (The WWN nickname and WWN group nickname must not duplicate each other.)	Correct the specification and issue the configuration information setting request again.
1066	The specified WWN number is not registered. (At deletion or modification)	Correct the specification and issue the configuration information setting request again.
1067	An attempt was made to register the same WWN group number as one that is already registered.	Correct the specification and issue the configuration information setting request again.
1068	The WWN Group number was not found.	Correct the specification and issue the configuration information setting request again.
1069	An attempt was made to register the same LUN group number as one that is already registered.	Correct the specification and issue the configuration information setting request again.
1070	The specified LUN group number is not registered. (At deletion or modification)	Correct the specification and issue the configuration information setting request again.
1071	A setting request having the same contents as those already set was issued for the same Port.	Correct the specification and issue the configuration information setting request again.
1072	An attempt was made to register the same LUN group nickname as one that is already registered.	Correct the specification and issue the configuration information setting request again.
1073	There is no volume that can be set at CVS operation (Install CV).	Review the set CV and issue the configuration information setting request again.
1074	The CU specified at CVS operation (Install CV) cannot be set.	Correct the specification and issue the configuration information setting request again.
1075	Different CVS operations (Volume Initialize, Install CV, Volume to Space) were specified together in a single configuration information setting request.	Correct the specification and issue the configuration information setting request again.
1100	There are less than two WWNs that belong to the WWN group.	Correct the specification and issue the configuration information setting request again.
1101	The CVS operation was requested for a volume that is not mounted.	Correct the specification and issue the configuration information setting request again.

1102	The LDEV to be reduced by the CVS operation could not be deleted. (The target LDEV is the last in the Parity Group.)	There must be at least one LDEV in a Parity Group, so further reduction is impossible.
1103	In CVS operation, an operation instruction was issued for a Parity Group that is not mounted.	Correct the specification and issue the request again.
1104	An attempt was made to set a SubSystem ID without the CVS operation.	Match the required CVS setting and SubSystem ID and issue the configuration modification request again.
1105	The number of LDEV IDs that can be set in the CVS operation was exceeded.	Review the LDEV IDs, delete an existing LDEV if necessary, and issue the request again.
1108	A request was made to set a command device for a HIHSM Reserve volume.	Correct the specification and issue the configuration information setting request again.
1110	The character string specified as the nickname when requesting modification of the configuration of LUN-Security contains a character that cannot be used.	Review the specified characters and issue the configuration modification request again.
1111	No nickname was specified when requesting modification of the configuration of LUN-Security.	Specify a nickname and issue the configuration modification request again.
1113	The volume to be created by the CVS operation is being used as the MAV function.	Change the volume for which the CVS operation is to create a CV and execute the CVS operation again.
1114	No value was set for WWN information that belongs to WWN group information when the LUN-Security operation was executed.	Review WWN information for grouping WWNs and issue the configuration modification request again.
1115	No value was set for LUN information that belongs to LUN group information when the LUN-Security operation was executed.	Review LUN information for grouping LUNs and issue the configuration modification request again.
1116	No value was set when registering WWN. Or, 0 is set as the WWN value.	Review WWN to be registered and issue the configuration modification request again.
1123	A request was made to set command device security, but a command device has already been set.	If you want to specify command device security for the target volume, free the command device setting and issue a configuration modification request. Or, assign processing to a different volume.
1124	The method of setting command device security is incorrect. (To set command device security, set it when setting the command device. And, to free command device security, set it when freeing the command device. However, freeing the command device also frees command device security at the same time.)	Review the specification and issue the configuration modification request again.
1201	The CHA high-speed mode was specified, but the specified Path contains a Path for which the high-speed mode cannot be set.	Change the parameter to a Path for which the high-speed mode can be set and execute the request again.
1202	The CHA high-speed mode was specified, but the specified Port contains a Host Mode for which the high-speed mode cannot be set.	Specify a Host Mode for which the high-speed mode can be set and execute the request again.
1203	The CHA high-speed mode was specified, but the Fiber Address of the specified Port contains a path for which the high-speed mode cannot be set.	Specify the Port of a Fiber Address for which the high-speed mode can be set and execute the request again.
1204	The CHA high-speed mode was specified, but the topology in the specified Port contains a path for which the high-speed mode cannot be set.	Specify a Port whose topology setting allows the high-speed mode to be set and execute the request again.
1205	The CHA high-speed mode was specified, but a Fiber PCB for which the high-speed mode cannot be set is specified.	Specify the Port of a Fiber PCB for which the high-speed mode can be set and execute the request again.
1206	The operating mode contains an undefined CHA, so the specified setting is impossible.	Set the operating mode for CHA and issue the request again.
1261	A request was made to modify the configuration of the Path setting for a volume controlled by OnDemand.	Correct the specification and issue the request again. Or, free the Parity Group controlled by OnDemand.

1262	A request was made to modify the configuration of the command device setting for a volume controlled by OnDemand.	Correct the specification and issue the request again. Or, free the Parity Group controlled by OnDemand.
1263	A request was made to modify the configuration of the LUSE setting for a volume controlled by OnDemand.	Correct the specification and issue the request again. Or, free the Parity Group controlled by OnDemand.
1269	The operating mode of the target PCB cannot be modified because I/Os from the host are being executed. (If multiple PCBs are specified at the same time, the operating mode may be partially modified.)	First, confirm the operating mode for PCB. Stop I/Os for the unmodified PCB and execute modification again.
1290	A temporary key was used before when requesting modification of the configuration of a license key, so it cannot be used again.	To use the license key, take the following measures: 1. Obtain a permanent key and register the license key again. 2. After 180 days, input the same license key again.
1291	The capacity for registering licenses when requesting modification of the configuration of a license key is insufficient.	Obtain the license key again. Or, expand the capacity.
1292	The capacity for prerequisite program products was insufficient when requesting modification of the configuration of a license key.	Review the size of the program products already set and, when you have obtained a license key appropriate to the size of the program products, issue the configuration modification request again.
1293	The program product was already installed when requesting modification of the configuration of a license key.	Review the license key and issue the configuration modification request again.
1294	An error occurred when checking whether a program product can be installed when requesting modification of the configuration of a license key.	The license key that you tried to install or uninstall may not be able to be accepted due to RAID configuration information. Also, the program product may already be set, so free the setting and issue the configuration modification request again.
1295	The key code was invalid when requesting modification of the configuration of a license key.	The key code that was input is invalid.
1296	AA prerequisite program product was not installed when requesting modification of the configuration of a license key. Alternatively, the prerequisite program product was already uninstalled.	Prerequisite program products are required for inputting a license key for which a request is issued. After setting the prerequisite program products, request modification of the configuration again. Or, first uninstall program products that share a parent-child relationship with the prerequisite program product.
1297	The program product specified when requesting modification of the configuration of a license key does not exist.	Obtain the license key and issue the configuration modification request again.
1298	Requests having the same product ID for INSTALL/DEINSTALL were issued when requesting modification of the configuration of a license key.	Separate INSTALL/DEINSTALL having the same product ID before issuing a configuration modification request.
1299	Multiple DEINSTALL were requested within a single PDU when requesting modification of the configuration of a license key.	Separate the DEINSTALL requests before issuing a configuration modification request.
1350	An attempt was made to add a Path to an initiator Port.	The Port to be set is a Fibre TrueCopy Port, so the attribute must be changed before a Path is added. Attribute (TarGet or RCU TarGet)
1351	You cannot change to high-speed mode because the Port attributes (such as initiator) within the package are mixed.	The Port to be set is a Fibre TrueCopy Port, so all attributes of the Port must be changed to initiator before switching to high-speed mode.
1352	You cannot change because a logical Path remains in the initiator Port.	The Port to be set is a Fibre TrueCopy Port, so the logical Path must be erased before the Port is set.
1353	You cannot change because S-VOL remains in the RCU target.	The Port to be set is a Fibre TrueCopy Port, so the S-VOL logical Path set to RCU TarGet must be erased before the Port is set.

1354	An attempt was made to register WWN for an initiator Port.	The Port to be set is a Fibre TrueCopy Port, so the attribute must be changed before WWN is added. Attribute (TarGet or RCU TarGet)
1400	An input parameter is invalid. (RCU Port number/ID/LUN) (MCU/RCU serial number, or SSID) (too many Paths specified)?	Review the parameters and issue the request again.
1401	The Port type is invalid "Serial"/"Fibre".	Correct the Port type and issue the request again.
1402	The specified volume is not a TrueCopy Pair.	Review the LDEV to be specified and issue the request again.
1403	The target CU cannot be found.	Review the CU to be specified and issue the request again.
1404	The specified Port is not "Serial"- "RCP"/"Fibre"- "Initiator".	Confirm the specified Port and specify the correct Port, or change the Port to RCP/Initiator and issue the request again.
1405	The connection destination address is invalid.	Confirm the logical address, set the correct address and issue the request again.
1406	The same Path already exists.	Review the Path to be specified and issue the request again.
1407	The number of Paths exceeds the limit. (Serial:4 Fibre:8)	Review the input parameters and issue the request again.
1408	The Path does not exist.	Review the input parameters and issue the request again.
1409	The LUSE on the sub side is not defined.	Review the input parameters and issue the request again.
1410	The specified RCU extension volume (Port/ID/LUN) cannot be used.	Review the input parameters and issue the request again.
1411	Four RCUs are already registered.	Review the input parameters and issue the request again.
1412	Four SSIDs are already registered in the target CU.	Confirm the SSID values of the RCU. If invalid SSIDs were registered, delete them and issue the request again.
1415	The SSID setting contained an error when requesting modification of the configuration of TrueCopy.	Review the SSID setting and issue the configuration modification request again.
1416	An attempt was made to set a value higher than the upper limit (4) for the SSID setting when requesting modification of the configuration of TrueCopy.	Review the set SSIDs and issue the configuration modification request again.
1417	Multiple operation instructions were set within the same PDU when requesting modification of the configuration of TrueCopy.	Separate the operation requests before requesting modification of the configuration.
1418	The specified RCU was already registered when registering RCU.	Review the set RCU and issue the configuration modification request again.
1419	The requested operation is impossible because detailed Path information is not given.	Review the command to be issued and issue the modification request again.
1420	The requested operation is impossible because a summary of Path information is not given.	Review the command to be issued and issue the modification request again.
1421	A logical Path remains in the target MCU Port.	Delete the logical Path that remains and execute a retry.
1422	A logical Path remains in the target RCU Port.	Delete the logical Path that remains and execute a retry.
1423	A LU definition remains in the target RCU Port.	Delete the LU definition and execute a retry.

1424	"RCP" of a "Serial" Port was specified in the MCU Port specification, but no link address to be set for "Serial" was set.	Confirm the parameters or Port specification.
1425	"Initiator" of a "Fibre" Port was specified in the MCU Port specification, but no receive Port to be set for "Fibre" was set.	Confirm the parameters or Port specification.
1426	A "Fibre" Port was specified in the MCU Port specification in a CU image for which "Serial" was set.	Confirm the existing setting or MCU Port specification.
1427	A "Serial" Port was specified in the MCU Port specification in a CU image for which "Fibre" was set.	Confirm the existing setting or MCU Port specification.
1429	The Port mode of a closed Port was changed.	Confirm the specified Port.
1430	A setting was input for a Port that is not mounted.	Confirm the specified Port.
1431	No option ("RIOMIH timer"/"PathBlockadeWatch") was specified.	Review the parameters and issue the request again.
1432	An unnecessary specification was made. ("RIOMIH timer"/"PathBlockadeWatch")	Review the parameters and issue the request again.
1433	A setting was input for a Port that is not targeted.	Confirm the specified Port. (It may be a Port not targeted by TrueCopy.)
1434	A LU remains in the target Port.	Delete the LU and execute the operation again.
1435	"Fibre" Ports and "Serial" Ports are mixed in the 1CU image on the MCU side.	Confirm the send Port specified on the MCU side.
1438	ESCON connection is used when setting RCU, but a target FLAG is set.	Review the parameters and issue the request again.
1439	The connection destination CU when setting RCU is outside the specifiable range.	Review the parameters and issue the request again.
1440	The connection destination Port number when setting a Path is outside the specifiable range.	Review the parameters and issue the request again.
1500	The requested operation is impossible because encryption is disabled.	Enable encryption or review the operation.
1501	The requested operation is impossible because encryption is already enabled.	Review the operation.
1502	Encryption alone cannot be enabled.	Enable the password before enabling encryption.
1503	The specified server is not registered.	Review the server to be specified.
1504	The password cannot be disabled while encryption remains enabled.	Disable the password before disabling encryption.
1505	The maximum number of servers that can be registered was exceeded.	If any obsolete servers are registered, delete them.
1506	The maximum number of servers that can be registered is already specified.	None.
1507	The specified server is already registered.	Review the server to be specified.
1508	A combination of operations that is not permitted is contained.	Review the combination of operations.
1509	You cannot lock because the passwords are different. (The password managed on the SVP side and the password that was sent are different.)	Review the passwords.
1510	The requested operation is impossible because the password was not enabled at locking.	Change to a lock mode that requires a password or review the operation.
1511	A lock method that requires a password is already enabled.	It is not necessary to change to a new lock method.

1512	The specified password is incorrect. (The password contains a character that cannot be used.)	Review the password, specify a correct password and execute the operation again.
1513	The conventional lock method is already enabled.	It is not necessary to change to the conventional lock method.
1514	No password was given when specifying a lock operation.	Specify a password when executing the lock operation.
1515	Multiple operations were executed for the same IP address.	Review the specified IP address and eliminate multiple operations for the same IP address.
1516	The instruction registers an IP address that cannot be defined.	Review the IP address to be registered.
1517	A new password was specified but the specified instruction does not change the password.	Review the selected operation.
1518	The specified password is already being used. (Another vendor/user is using the same password.)	Modify the password again using a different password.
1519	The specified password is reserved and cannot be used.	Modify the password again using a different password.
1520	No password is specified in the password modification instruction.	Specify a new password and modify the password again.
1521	No IP address is specified in the IP address addition instruction.	Specify an IP address and add the IP address again.
1522	The password cannot be modified.	Unlock and then execute the operation again.
2001	A configuration information acquisition request or configuration information setting request was issued without issuing a refresh request.	Issue a refresh request and then issue a configuration information acquisition request or configuration information setting request.
2002	An attempt to connect during communication between Remote Console and DKC (SVP) failed.	Contact and consult the maintenance service center.
2003	An attempt to read configuration information from DKC (SVP) failed.	Contact and consult the maintenance service center.
2004	An attempt to load the file required for execution failed. (Memory is insufficient or the required file does not exist.)	Expand memory. Also, confirm that installation of the agent did not fail and that the required files have not been mistakenly deleted.
2005	Memory required for execution could not be acquired.	Quit other programs operating on a SVP PC or expand memory.
2006	LUN Manager (PP name: LUNM or LUN Configuration Manager) required for executing the request has not been installed.	Install the required program product.
2007	LUSE (PP name: LUNM/LUSE or LUN Configuration Manager) required for executing the configuration information setting request has not been installed.	Install the required program product.
2008	LUN Security (PP name: LUN Security or Secure Manager) required for executing the configuration information setting request has not been installed.	Install the required program product.
2009	The SVP or DKC micro program cannot execute the request. (The version cannot execute the request.)	Install a version of the micro program that can execute the request.
2010	An error occurred while checking for a blockage.	Confirm that no I/O was generated from a host to the Path/volume.
2011	A maintenance pre-check error occurred.	Confirm the status (not blocked) of DKC. If the error occurs again, call maintenance personnel
2012	A Port blockage error occurred.	Confirm the status (not blocked) of DKC. If the error occurs again, call maintenance personnel.
2013	A download error occurred.	Confirm the status (not blocked) of DKC. If the error occurs again, call maintenance personnel.

2014	A Port recovery error occurred.	Confirm the status (not blocked) of DKC. If the error occurs again, call maintenance personnel.
2015	A communication error occurred.	Confirm the connection status of SVP and DKC. If the error occurs again, call maintenance personnel.
2016	DKC (SVP) or Remote Console is setting configuration information. (Error due to exclusive operation)	Wait a while and issue the request again.
2017	Exclusive lock was freed forcibly due to the detection of a timeout during a health check.	Issue the request again. (Execute again from the request for starting the exclusive lock.)
2018	The open DCR (PP name: Open DCR or Cache Lun) required for executing the configuration information setting request has not been installed.	Install the required program product.
2019	The open CVS (PP name: Open CVS or Lun Manager3) required for executing the configuration information setting request has not been installed.	Install the required program product.
2020	The Mainframe DCR (PP name: DCR or D.C.R) required for executing the configuration information setting request has not been installed.	Install the required program product.
2021	The Mainframe CVS (PP name: CVS or C.V.S) required for executing the configuration information setting request has not been installed.	Install the required program product.
2022	CVS is executing.	SVP or DKC is under CVS processing. Wait a while and issue the configuration information setting request again.
2023	HIHSM (PP name: HIHSM or Auto LUN) required for executing the configuration information setting request has not been installed.	Install the required program product.
2031	The versions of RMC and DKC or SVP do not match.	Install matching versions of RMC and DKC or SVP.
2032	Busy between DKCs (SVPs).	Wait a while and issue a refresh request.
2033	The configuration inside SVP is being changed.	Wait a while and issue a refresh request.
2034	Port Control (PP name: Prioritized Port Control) required for executing the configuration information setting request has not been installed.	Install the required program product.
2037	The size of the mounted cache is different on CL1 and CL2.	Confirm the status of DKC. If the error occurs again, call maintenance personnel.
2082	You cannot change because of the host reserve status.	Free the host reserve status and execute the operation again.
2100	M-VOL or R-VOL contains an error.	1. Issue a refresh request and then confirm the status of M-VOL/R-VOL. (Check SSB of R-VOL.) 2. M-VOL or R-VOL has a PIN. Confirm the status of the PIN slot and recover the PIN. 3. Confirm that M-VOL is in the following status. (Data copying/accessing collection/blocked/maintenance in progress/READ ONLY)
2101	The pair status is ineffective.	Issue a refresh request and obtain the information again.
2102	The pair status of the LUSE is invalid.	Confirm the pair.
2103	The logical Path between MCU and RCU is ineffective.	Issue a refresh request and then confirm the status of the Path between the specified MCU and RCU.
2104	The pair status does not allow the specified operation.	Confirm the pair status.

2105	The specified volume or another volume in the same group as the specified volume is changing status.	Wait a while and execute the operation again.
2106	The specified RCU/SSID contains a TrueCopy Pair. Delete all pairs and execute the operation again.	None.
2107	An error occurred while switching Ports.	Call maintenance personnel (replace CHA).
2108	The specified operation is impossible because the Port type is being changed.	Wait a while and execute the operation again.
2109	The Port is being initialized.	None.
2110	A logical Path remains in the Port on the MCU or RCU side.	None.
2112	A job remains in the target Port.	Issue a refresh request and then issue the request again.
2113	An attempt to register a pair/operate pair resume failed. R-VOL must not be T-VOL of ShadowImage or a Reserve VOL.	None.
2114	An attempt to change a pair option failed. The fence level is not supported on the RCU side/M-VOL is in suspend status.	None.
2115	An attempt to delete a pair failed. (1) C/T group is in CHK status. (2) Volume is in CHK status.	None.
2116	An attempt to terminate the pair operation failed.	None.
2117	The Pair suspend operation failed.	Issue a refresh request, confirm the pair status and then issue the request again.
2118	R-VOL is invalid.	None.
2119	The TrueCopy C/T group is already registered. The Async option cannot be changed.	None.
2120	The timer type cannot be changed because the specified C/T group also contains an asynchronous pair.	None.
2121	The C/T group is not registered.	None.
2122	An attempt to register the C/T group failed. The specified C/T group is using MCU. One or more asynchronous pairs exist. A pair in the group is migrating to SIMPLEX.	None.
2123	Operation for changing the C/T group option failed. A pair exists.	None.
2124	R-VOL is being used elsewhere. The operation is impossible.	Confirm the following about R-VOL: 1. Dual copy being used 2. Being used by XRC 3. Being used by PPRC or TC-MF 4. Being used by concurrent copy 5. Reserved
2125	MCU is being used by ShadowImage. The operation is impossible.	None.
2126	M-VOL is being used by XRC. The operation is impossible.	None.
2127	RCU is already being used. The operation is impossible.	None.
2128	The operation was rejected due to the FREEZE status.	None.
2129	The NCFREEZE command suspended processing. The operation is impossible.	None.
2130	M-VOL is being used by HIHSM. The operation is impossible.	None.
2131	TC-MF and TC both exist in the same C/T group.	None.
2132	The specified R-VOL cannot be recognized from the connection Port.	None.
2133	R-VOL is in intervention request status.	None.

2134	An attempt to change the status of R-VOL failed.	Issue a refresh request and confirm the status of R-VOL.
2135	The current number of Paths between MCU and RCU is lower than the specified minimum number of Paths.	Issue a refresh request and confirm the number of Paths.
2137	The program product TrueCopy, HORCA, or HORCE is not installed.	(1) Install the required program product. (2) Replace with a supported CHA.
2138	The program product Fibre-TrueCopy is not installed in MCU or RCU.	Install the required program product.
2139	TrueCopy and the multi-platform function have an exclusive relationship.	Reduce CHS PCB of MCU before executing the TrueCopy function.
2140	The controller type of MCU or RCU does not support TrueCopy.	Confirm the device emulation type.
2141	The combination of controller types of MCU and RCU are not supported.	None.
2142	The device emulation type of M-VOL or R-VOL does not support TrueCopy.	Confirm the device emulation type.
2143	RCU does not support remote copy of the extension VOL.	Confirm the control type of RCU and the version of the micro program.
2144	A portion is blocked.	Call maintenance personnel.
2145	DKC contains an error.	Call maintenance personnel.
2146	The cache status of MCU or RCU is ineffective.	Issue a refresh request and then confirm the cache status.
2147	The DFW status of R-VOL is invalid.	Confirm the DFW status of R-VOL. If it is off, set it again. If you cannot set it, call maintenance personnel.
2148	NVS of MCU cannot operate.	Confirm the NVS status and issue the request again. If you cannot set it, call maintenance personnel.
2149	The serial number or the link address on the RCU is invalid.	Review the specification.
2150	The function is not supported.	Confirm the version of the micro program.
2151	The cache of MCU is automatically resetting. Click [OK] to terminate processing, then wait several minutes and execute the operation again.	Wait a while and issue the request again.
2152	The status of M-VOL does not allow operations to be accepted.	None.
2153	An attempt to generate a Path failed.	Specify a different Path or delete all pairs on the RCU side and then issue the request again.
2154	An error occurred in the target MP.	Call maintenance personnel. (You must confirm CHA.)
2155	Initializing during the pre-check.	Wait a while and execute a retry.
2156	FOP (Port) is blocked.	Call maintenance personnel.
2157	A logical Path and R-Vol remain in the target RCU mixed Port.	Call maintenance personnel.
2158	An error occurred during the referencing of the remaining R-Vol at the target RCU mixed Port.	Call maintenance personnel.
2159	An attempt to switch configuration information for the initiator failed.	Call maintenance personnel.
2160	An attempt to switch configuration information for the target failed.	Call maintenance personnel.
2161	An attempt to switch configuration information for the RCU target.	Call maintenance personnel.
2162	A job remains in the target MCU Port.	Execute a retry after the job stops.

2163	A job remains in the target RCU Port.	Execute a retry after the job stops.
2164	An attempt to change the Port with the FOP Path configuration information modification function failed.	Call maintenance personnel.
3000	An attempt to obtain an external function pointer required by the agent failed.	Contact and consult the maintenance service center (with trace information).
3001	An attempt to obtain an external function pointer for obtaining trace information failed.	Contact and consult the maintenance service center (no trace information).
3002	An invalid inter-function interface was detected in the agent.	Contact and consult the maintenance service center (with trace information).
3003	An internal logical error was detected.	Contact and consult the maintenance service center (with trace information).
3004	No directory for MIB management information exists.	Contact and consult the maintenance service center (with trace information).
3005	An attempt to write MIB management information failed.	Contact and consult the maintenance service center (with trace information).
3006	An error occurred during the accessing of a file required by the agent.	Contact and consult the maintenance service center (with trace information).
3007	An interface logical error was detected in the agent.	Contact and consult the maintenance service center (with trace information).

1.3.3 Hitachi Thunder 9500V and 9200 Messages

Table 1.15 lists and describes the Thunder 9500V and 9200™ messages which are displayed by HiCommand Device Manager.

Table 1.15 Hitachi Thunder 9500V and 9200 Messages (continues on the following pages)

Error Code	Description
1	DMEA001000: The information file for the subsystem cannot be opened. Confirm the execution environment.
2	DMEA001001: The information file for the subsystem is invalid. Confirm the execution environment.
3	DMEA001002: The specified subsystem name is already registered. Specify another name.
4	DMEA001003: The specified subsystem name is not registered.
5	DMEA001004: The registered information does not match the status of the subsystem. Correct the information and then try again.
6	DMEA001005: DMEA001005: The number of registered subsystems reached the maximum. Delete unnecessary information, and then retry.
102	DMEA001006: Invalid parameter.
103	DMEA001007: The specified controller is incorrect.
104	DMEA001008: An attempt to open the specified file failed. Confirm the file name, and then retry.
105	DMEA001009: The contents of the specified file are invalid. Confirm the file, and then retry.
106	DMEA00100A: An attempt to connect with the server failed. Confirm the registered information and the LAN environment, and then retry.
107	DMEA00100B: The password is not specified.
108	DMEA00100C: The password is corrupted. Delete the password file, and then retry.
301	DMEA00100D: No LU exists. Confirm the LU specification, and then retry.
302	DMEA00100E: Formatting failed. Confirm the subsystem status and the LAN environment, and then try again.
a01	DMEA00100F: The file for e-mail setting contains an error.
a02	DMEA001010: The e-mail setting is not set.
a03	DMEA001011: The parameter for e-mail setting is invalid.
a04	DMEA001012: An error was detected while connecting to the mail server. Confirm the mail server, and then retry.
b01	DMEA001013: An internal program error occurred. Wait for a while and then try again. If the problem cannot be solved, contact the maintenance personnel.
b02	DMEA001014: The connection type is invalid.
1004	DMEA001015: The microprogram revision is not supported. Confirm the subsystem status.
a05	DMEA001016: An attempt to start the specified application program failed. Confirm the path to the specified application and the operation environment.
109	DMEA001017: An error occurred during the file I/O. Confirm the status of the specified file.
1005	DMEA001018: Invalid disk directory path order. Confirm the disk directory path order.
101	DMEA001019: The process cannot be performed because the microprogram on the subsystem does not support the function.
1006	DMEA001020: Replacement of the microprogram is not finished. Confirm the subsystem.
7	DMEA001021: The number of groups reached the maximum. Specify an already registered group or delete an unnecessary group.

10a	DMEA001022: A hardware error occurred. Confirm the subsystem.
10b	DMEA001023: The process cannot be performed because the current subsystem does not support the function.
10c	DMEA001024: Environment variable DAMP_ROOT_DIR_PATH is not defined. Specify DAMP_ROOT_DIR_PATH.
10d	DMEA001025: The controller in charge of the LU is not registered. Register the controller, and then retry.
8	DMEA001026: The specified information does not match the configuration of the subsystem. Confirm the configuration information.
10e	DMEA001027: The JRE version in use is not supported. Confirm the JRE version.
1007	DMEA001028: An attempt to restart the subsystem failed.
10f	DMEA001029: Environment variable DAMP_ROOT_DIR_PATH does not match. Confirm DAMP_ROOT_DIR_PATH.
400	DMEA001030: The parameter for System Startup Attribute or the item name is invalid.
401	DMEA001031: The parameter for Spare Disk or the item name is invalid.
402	DMEA001032: The parameter for Host Connection Mode or the item name is invalid.
403	DMEA001033: The parameter for Serial Number or the item name is invalid.
404	DMEA001034: The parameter for Drive Capacity or the item name is invalid.
405	DMEA001035: The parameter for Option 1 or the item name is invalid.
406	DMEA001036: The parameter for Option 2 or the item name is invalid.
407	DMEA001037: The parameter for Data Striping Size or the item name is invalid.
408	DMEA001038: The parameter for Buzzer or the item name is invalid.
409	DMEA001039: The parameter for LU Size Report to the Host, or the item name is invalid.
40a	DMEA00103A: The parameter for SCSI Reset/LIP Mode for all Ports, or the item name is invalid.
40b	DMEA00103B: The parameter for Operation if the Processor failures Occurs, or the item name is invalid.
40c	DMEA00103C: The parameter for INQUIRY Information or the item name is invalid.
40d	DMEA00103D: The parameter for Cache Mode or the item name is invalid.
40e	DMEA00103E: The parameter for Target ID or the item name is invalid.
40f	DMEA00103F: The parameter for Port Type or the item name is invalid.
410	DMEA001040: The parameter for ROM Pseudo-response command processing, or the item name is invalid.
411	DMEA001041: The parameter for Save Data Pointer response, or the item name is invalid.
412	DMEA001042: The parameter for Controller Identifier or the item name is invalid.
413	DMEA001043: The parameter for RS232C Error Information Outflow Mode, or the item name is invalid.
414	DMEA001044: The parameter for Write & Verify Execution Mode, or the item name is invalid.
415	DMEA001045: The parameter for LAN CONST or the item name is invalid.
416	DMEA001046: The parameter for SYNC CONTROL or the item name is invalid.
417	DMEA001047: There is no file header.
418	DMEA001048: The present drive configuration for the subsystem cannot support the drive configuration information of the specified file.
419	DMEA001049: The RAID configuration data is invalid.
41a	DMEA00104A: The LU configuration data is invalid.
41b	DMEA00104B: The drive configuration data is invalid.

41c	DMEA00104C: The parameter for FD Back UP, or the item name is invalid.
111	DMEA00104D: The password length is invalid. Use 12 or fewer characters.
110	DMEA00104E: The process failed because the function is disabled.
112	DMEA00104F: An attempt to obtain the controller failure dump information failed. Retry after 10 minutes.
41d	DMEA001050: The parameter for Web Title or the item name is invalid.
41e	DMEA001051: The parameter for Delay Planned Shutdown or the item name is invalid.
a06	DMEA001052: The additional information file cannot be opened. Confirm the execution environment.
a07	DMEA001053: The additional information file is invalid. Confirm the execution environment.
a08	DMEA001054: The mail additional information length is invalid.
a09	DMEA001055: The number of registered mail additional information items reached the maximum. Delete unnecessary information, and then retry.
113	DMEA001070: The Disk Array Management Program is not installed correctly.
18	DMEA001071: The function cannot be executed because the LU has already been reserved.
1008	DMEA001072: The specified path name is over 250 characters.
115	DMEA001073: An attempt to create a log directory failed. Confirm the execution environment.
1009	DMEA001074: The specified path name is incorrect.
100A	DMEA001075: The specified path does not exist, or no effective files exist under the specified path.
100B	DMEA001076: In the following paths, the effective path does not exist, or no effective files exist under one.
100C	DMEA001077: An attempt to create a micro file directory failed. Confirm the execution environment.
116	DMEA001078: The specified key was not found. Confirm the file, and then retry.
117	DMEA001079: This function cannot be used for the specified device.
118	DMEA001080: The LU mapping cannot be set when the mapping mode is off.
119	DMEA001081: An attempt to obtain drive information failed.
429	DMEA001082: The parameter for Additional Battery Unit Mode or the item name is invalid.
420	DMEA001083: The parameter for PortOption or the item name is invalid.
421	DMEA001084: The parameter for HostGroupInformation or the item name is invalid.
422	DMEA001085: The parameter for HostGroupOption or the item name is invalid.
423	DMEA001086: The parameter for LuMapping or the item name is invalid.
424	DMEA001087: The parameter for FibreSecurityInformation or the item name is invalid.
425	DMEA001088: The parameter for CommonInformation or the item name is invalid.
426	DMEA001089: Failed to set up a Mapping Mode. Confirm the setting file, and then retry.
427	DMEA001090: The CTL Header is invalid.
428	DMEA001091: The PORT Header is invalid.
11A	DMEA001092: An illegal option is set.
11B	DMEA001093: The function cannot be used because it is not installed, locked, or disabled.
501	DMEA001094: The specified host group is already defined. Confirm the name or number, and specify a undefined host group.
502	DMEA001095: The specified host group is not defined. Confirm the name or number, and specify a defined host group.

503	DMEA001096: The host group security on the specified port is set to disable. Set the host group security to enable, and then retry.
504	DMEA001097: The function cannot be executed because host group 0 is specified. Specify other than host group 0, and then retry.
505	DMEA001098: The specified host group name or WWN name is invalid. Confirm the name and try again.
506	DMEA001099: The specified host group number is invalid. Confirm the number, and then retry.
507	DMEA001100: The specified node name is invalid. Confirm the name, and then retry.
508	DMEA001101: The specified port name is invalid. Confirm the name, and then retry.
509	DMEA001102: The parameter for LUNManagementInformation or the item name is invalid.
50A	DMEA001103: The same host group name exists in a port. Confirm the setting file, and then retry.
50B	DMEA001104: The same WWN name exists in a port. Confirm the setting file, and then retry.
50C	DMEA001105: The same port name exists in a port. Confirm the setting file, and then retry.
50D	DMEA001106: The same host group number exists in a port. Confirm the setting file, and then retry.
50E	DMEA001107: The information on the host group number 0 is not in a setting file. Confirm the information on the host group number 0 for every port, and then retry.
520	DMEA001108: The specified Web Title is invalid. Confirm the Web Title, and then retry.
1000000	DMES000000: Retry.
1050000	DMES050000: Retry.
1040100	DMES040100: Retry.
1010200	DMES010200: Retry.
1040200	DMES040200: Retry.
1040300	DMES040300: Retry.
1020400	DMES020400: Retry.
1020401	DMES020401: Retry.
1020402	DMES020402: Retry.
1020404	DMES020404: The process cannot be performed because it is now formatting. Retry after formatting completes.
1020484	DMES020484: Power off in process. Retry when the subsystem is in Ready status.
1020500	DMES020500: Retry.
1010600	DMES010600: Retry.
1040600	DMES040600: Retry.
1040700	DMES040700: Retry.
1040800	DMES040800: Retry.
1040801	DMES040801: Retry.
1010802	DMES010802: Retry.
1040802	DMES040802: Retry.
1010900	DMES010900: Retry.
1040900	DMES040900: Retry.
1030c02	DMES030C02: Retry.

1031000	DMES031000: Retry.
1031102	DMES031102: Retry.
1031104	DMES031104: Retry.
1031200	DMES031200: Retry.
1011300	DMES011300: Retry.
1031300	DMES031300: Retry.
1011401	DMES011401: Retry.
1031401	DMES031401: Retry.
1011501	DMES011501: Retry.
1031501	DMES031501: Retry.
1011502	DMES011502: Retry.
1031502	DMES031502: Retry.
1011700	DMES011700: Retry.
1011701	DMES011701: Retry.
1011702	DMES011702: Retry.
1011703	DMES011703: Retry.
1011800	DMES011800: Retry.
1011801	DMES011801: Retry.
1011802	DMES011802: Retry.
1011902	DMES011902: Retry.
1031902	DMES031902: Retry.
1011903	DMES011903: Retry.
1031903	DMES031903: Retry.
1051a00	DMES051A00: Retry.
1041b00	DMES041B00: Retry.
1031c01	DMES031C01: Retry.
1031c02	DMES031C02: Retry.
1031d00	DMES031D00: Retry.
1052000	DMES052000: Retry.
1052100	DMES052100: Retry.
1052400	DMES052400: Retry.
1052500	DMES052500: The process cannot be performed because no LU exists. Retry after setting LU0.
1052580	DMES052580: An attempt to allocate the LU failed. Confirm the specified value.
1052581	DMES052581: The RAID group is not defined. Specify an existing RAID group.
1052583	DMES052583: The Turbo LU cache-resident function cannot be enabled.
1052584	DMES052584: The last LBA in the RAID group defined at RAID0+1 full mapping does not match the current value.
1052590	DMES052590: The LU non-owner controller received an LU replacement command (for TRESPASS mode only).

10525a0	DMES0525A0: Retry.
1052600	DMES052600: The process failed due to an invalid parameter. Confirm the specified value.
1052601	DMES052601: The process failed due to an unsupported parameter. Confirm the specified value.
1052602	DMES052602: The process failed due to an invalid parameter. Confirm the specified value.
1062900	DMES062900: Retry.
1062a00	DMES062A00: Retry.
1062f00	DMES062F00: Retry.
1033100	DMES033100: Retry.
1033101	DMES033101: Formatting ended abnormally. Retry after waiting for a while.
1033180	DMES033180: Retry.
1033181	DMES033181: Retry.
1013200	DMES013200: Retry.
1043200	DMES043200: Retry.
1013201	DMES013201: Retry.
1033201	DMES033201: Retry.
10b3d00	DMES0B3D00: Retry.
1023e00	DMES023E00: Retry.
1063f01	DMES063F01: The microprogram is downloaded.
10b4300	DMES0B4300: Retry.
1044400	DMES044400: Retry.
10444a0	DMES0444A0: Retry.
10b4500	DMES0B4500: Retry.
10b4700	DMES0B4700: Retry.
10b4800	DMES0B4800: Retry.
10b4900	DMES0B4900: Retry.
10b4a00	DMES0B4A00: Retry.
10b4b00	DMES0B4B00: Retry.
1044c00	DMES044C00: Retry.
10b4e00	DMES0B4E00: Retry.
1015b00	DMES015B00: Retry.
1015b02	DMES015B02: Retry.
1015b03	DMES015B03: Retry.
1068200	DMES068200: Retry.
1068201	DMES068201: Retry.
1068202	DMES068202: Retry.
1068210	DMES068210: Retry.
1068211	DMES068211: Retry.

1068212	DMES068212: Retry.
1068213	DMES068213: Retry.
1068214	DMES068214: Retry.
1068215	DMES068215: Retry.
1068216	DMES068216: Retry.
1068217	DMES068217: Retry.
1068218	DMES068218: Retry.
1068219	DMES068219: Retry.
106821a	DMES06821A: Retry.
1068300	DMES068300: Retry.
1068400	DMES068400: Retry.
1048a01	DMES048A01: Retry.
1048a02	DMES048A02: Retry.
1018a03	DMES018A03: Retry.
1018a04	DMES018A04: Retry.
1018b01	DMES018B01: Retry.
1058c01	DMES058C01: Retry.
1038e01	DMES038E01: Retry.
1049000	DMES049000: Retry.
1049001	DMES049001: Retry.
1049100	DMES049100: Retry.
1049101	DMES049101: Retry.
1039300	DMES039300: Retry.
1059401	DMES059401: Retry.
1029500	DMES029500: The process cannot be performed because the subsystem has stopped under pseudo-plan. Restart the subsystem, and then retry.
1029501	DMES029501: The process cannot be performed because the subsystem has completed stopping under pseudo-plan. Restart the subsystem and then try again.
1049502	DMES029501: The process cannot be performed because the subsystem has completed stopping under pseudo-plan. Restart the subsystem, and then retry.
1059510	DMES059510: The process cannot be performed because the microprogram is being replaced.
1059511	DMES059511: The process cannot be performed because the SVP is being replaced.
1059520	DMES059520: The specified function cannot be performed because the subsystem is in an impractical status for execution.
1059521	DMES059521: Retry.
1059530	DMES059530: The specified User ID is not registered.
1059532	DMES059532: The specified User ID is already registered.
1059533	DMES059533: Registration failed because 20 users are already registered.
1059534	DMES059534: The specified password is not confirmed.

1059535	DMES059535: Another user already logged in.
1059536	DMES059536: The function cannot be used because it is not installed, locked, or disabled.
1059537	DMES059537: The function cannot be executed because you have not logged in.
10b9531	DMES0B9531: The function could not be executed because another user is already logged in.
1049900	DMES049900: Retry.
104a000	DMES04A000: Retry.
10bc000	DMES0BC000: Retry.
10bc001	DMES0BC001: Retry.
10bc002	DMES0BC002: Retry.
10bc100	DMES0BC100: Retry.
10bc200	DMES0BC200: Retry.
10bda00	DMES0BDA00: The drive recovery request is rejected because another drive recovery is in progress.
104e400	DMES04E400: Retry.
104ea01	DMES04EA01: Retry.
104ea02	DMES04EA02: Retry.
105ea03	DMES05EA03: An attempt to download the microprogram failed. Confirm the subsystem.
105ea04	DMES05EA04: An attempt to replace the microprogram failed. Confirm the subsystem.
101ea05	DMES01EA05: The microprogram has been downloaded but part of the writing to the system drive could not be processed.
105ea10	DMES05EA10: An error was detected in the microprogram downgrade check. Use another microprogram to retry.
104ea10	DMES04EA10: An error was detected in microprogram downgrade check. Use another microprogram to retry.
104ea11	DMES04EA11: The specified microprogram could not be installed on to the RKL type because the microprogram version is old.
105ea12	DMES05EA12: It is impossible to change from the 128LU version microprogram to the 64LU version microprogram.
105ea13	DMES05EA13: An error was detected in the microprogram upgrade check. Use another microprogram to retry.
104eb00	DMES04EB00: The information could not be set because the backup floppy disk is not inserted.
104eb01	DMES04EB01: The backup information could not be written on to the FD because the FDD is in use or an error occurred in the FDD on the subsystem.
104eb02	DMES04EB02: An error occurred during the writing to the floppy disk.
104eb03	DMES04EB03: The SCSI ID could not be set online due to other controller blockage.
103f000	DMES03F000: Retry.
103f100	DMES03F100: Retry.
104f200	DMES03F200: Retry.
104f300	DMES03F300: Retry.
104f400	DMES04F400: Retry.
104f610	DMES04F610: Retry.
104f611	DMES04F611: Retry.
104f620	DMES04F620: Retry.
104f621	DMES04F621: Retry.

104f630	DMES04F630: Retry.
104f631	DMES04F631: Retry.
104f640	DMES04F640: Retry.
104f641	DMES04F641: Retry.
104f650	DMES04F650: Retry.
104f651	DMES04F651: Retry.
104f660	DMES04F660: Retry.
104f661	DMES04F661: Retry.
104f670	DMES04F670: Retry.
104f671	DMES04F671: Retry.
104f800	DMES04F800: Retry.
104f801	DMES04F801: Retry.
104f802	DMES04F802: Retry.
104f803	DMES04F803: Retry.
104f804	DMES04F804: Retry.
104f805	DMES04F805: Retry.
104f807	DMES04F807: Retry.
104f808	DMES04F808: Retry.
104f809	DMES04F809: Retry.
104f8f0	DMES04F8F0: Retry.
104f900	DMES04F900: Retry.
104f901	DMES04F901: Retry.
104f902	DMES04F902: Retry.
104f903	DMES04F903: Retry.
104f904	DMES04F904: Retry.
104f905	DMES04F905: Retry.
104f906	DMES04F906: Retry.
104f907	DMES04F907: Retry.
104f908	DMES04F908: Retry.
104f908	DMES04F909: Retry.
104f9f0	DMES04F9F0: Retry.
10bfd00	DMES0BFD00: The process cannot be performed due to LU replacement. Connect to the controller with owner permission, and then retry.
10bfd01	DMES0BFD01: The process for LU replacement is suspended. Retry after waiting for a while.
105ea20	DMES05EA20: The subsystem cannot be restarted.
1059540	DMES059540: A spare disk is already set in the specified RAID group.
1059541	DMES059541: The drive capacity of the RAID group is invalid, or the RAID group capacity is too large.

1059542	DMES059542: The specified drive cannot be used as a spare drive.
1059543	DMES059543: The number of spare drives reached the maximum.
1059544	DMES059544: The specified drive is already defined as a spare drive, or is already being used in the RAID group.
1059545	DMES059545: The specified drive capacity is smaller than that of the RAID group.
1059546	DMES059546: The specified drive is not defined as a spare drive.
1059547	DMES059547: The specified spare drive cannot be released because it is in use.
1059548	DMES059548: The specified function has already been unlocked.
1059549	DMES059549: The specified function has already been locked.
105954a	DMES05954A: Invalid key code.
105954b	DMES05954B: The RAID group cannot be defined because the drive is not mounted, or a blocked drive exists.
105954c	DMES05954C: The specified drive cannot be defined as a spare drive because it is not mounted or is in blocked status.
105954d	DMES05954D: The process cannot be performed because the target mode is not M-TID,M-LUN.
105954e	DMES05954E: The process cannot be performed because the addition of target information is required but changed or deleted information exist.
1059550	DMES059550: The function cannot be executed because of write prohibition.
1059551	DMES059551: The function cannot be executed because the concealment mode is enabled.
1059552	DMES059552: The function cannot be executed because the coupling LU or command device exists.
1059554	DMES059554: The function cannot be executed because the command device is not registered.
1059555	DMES059555: The function cannot be executed because the stripe size is not 64KB.
1059558	DMES059558: The process cannot be performed because the specified LU is a unified LU, or unified LUs exist.
1059559	DMES059559: The process cannot be performed because the specified LU is a Turbo LU or a reserved Turbo LU. Disable the Turbo LU or the reserved Turbo LU, and then retry.
105955a	DMES05955A: The unification cannot be performed because the controllers in charge of the LUs do not match.
105955b	DMES05955B: The unification cannot be performed because the controller in charge of the LU is reserved to be changed. Cancel the reservation, and then retry.
105955c	DMES05955C: The LU of RAID0 cannot be unified. Specify a LU with a RAID level that is not RAID0.
105955d	DMES05955D: The unification cannot be performed because the size of the unified LU will exceed 4294967295 blocks.
105955e	DMES05955E: The separation cannot be performed because the specified LU is not a unified LU. Specify a unified LU and then try again.
1059560	DMES059560: The process cannot be performed because the target mode is not M-TID,M-LUN.
1059561	DMES059561: The process cannot be performed because the target mode is M-TID,M-LUN, but the target information has already been set.
1059562	DMES059562: The unification cannot be performed because the specified Sub LU is a unified LU. Specify a non-unified LU for Sub LU, and then retry.
1059563	DMES059563: The unification or separation cannot be performed because the specified LU is a Sub LU. Specify a Main LU (unified LU), and then retry.
1059564	DMES059564: LU0 cannot be specified as a Sub LU. Specify an LU other than LU0 for Sub LU, and then retry.
1059565	DMES059565: The unification cannot be performed because the status of the LU is not normal or degenerated. Specify a LU with a status that is normal or degenerated, and then retry.
1059566	DMES059566: The process cannot be performed because the LU number exceeds 63. Specify a number from 0 to 63, and then retry.

1059568	DMES059568: The specified RAID group cannot be deleted because it contains LU0 and LUs exist in other RAID groups.
1059569	DMES059569: The specified LU cannot be deleted because it is not the last defined LU.
105956a	DMES05956A: The specified LU cannot be defined because LU0 is not yet defined. Define LU0 first, and then retry.
1059571	DMES059571: An attempt to set the path failed. Confirm the subsystem and try again.
1059572	DMES059572: An attempt to delete the path failed. Confirm the subsystem and try again.
1059573	DMES059573: An option that cannot be specified at the same time is effective unlocked.
1059574	DMES059574: The process cannot be performed because RVRP or SRC is in progress.
1059575	DMES059575: The option cannot be locked or disabled because the path has already been set.
1059577	DMES059577: The process cannot be performed because the pair creation is in progress.
105957A	DMES05957A: The process cannot be performed because the status of pair is suspension or error.
105957B	DMES05957B: The process cannot be performed because the pair status is invalid.
105957C	DMES05957C: The process cannot be performed because the pair has been created in another subsystem.
105957D	DMES05957D: The process cannot be performed because the subsystem is in a condition of over the inflow threshold.
105957E	DMES05957E: The process cannot be performed because the status of the MRCF pair is invalid.
105957F	DMES05957F: The option cannot be unlocked because it used in the Fibre Channel subsystem.
1059580	DMES059580: The process cannot be performed because the process from RAID Manager is being accepted.
1059590	DMES059590: The process cannot be performed because the subsystem is for the exclusive use of 128 LUs.
1059591	DMES059591: The process cannot be performed because the number of MRCF pairs reached the maximum.
1059600	DMES059600: The process cannot be performed. Wait for a while, and then retry.
1059601	DMES059601: The specified host group number is valid.
1059602	DMES059602: The process cannot be performed because the specified option is not a fee-basis option.
1059603	DMES059603: The process cannot be performed because the specified size of the LU exceeds the maximum LU size.
1059606	DMES059606: The specified LU is invalid. Specify a valid LU and try again.
1052604	DMES052604: Release of Persistent Reservation failed because the type of the Persistent Reserve command was different.
1062A03	DMES062A03: For the LU, all Reservation Keys and Persistent Reservations were cleared by the Clear service action of the Persistent Reserve command.
1062A04	DMES062A04: The registration of the Persistent Reserve command or Register & Ignore Key service action cleared the Reservation Key and released the Persistent Reservation.
1062A05	DMES062A05: Preempt of the Persistent Reserve command or a Preempt & Abort service action cleared the Reservation Key.
1055504	DMES055504: It is impossible to register over 32 Reservation Keys in an LU.
1079578	DMES079578: The process cannot be performed because the data is being copied.
105eb04	DMES05EB04: The FDD on the subsystem could not be diagnosed because the FDD is in use.
1079595	DMES079595: Retry.
1059596	DMES059596: Retry.
1079597	DMES079597: Retry.
1079598	DMES079598: Retry.
1049599	DMES049599: Retry.

102959A	DMES02959A: Retry.
102959B	DMES02959B: Retry.
3010001	DMED010001: The same host group name exists in a port. Confirm the host group name, and then retry.
3010002	DMED010002: The same WWN name exists in a port. Confirm the WWN name, and then retry.
3010003	DMED010003: WWN cannot be assigned to an undefined host group. Specify the defined host group, and then retry.
3010004	DMED010004: The function cannot be executed because the host group security on all ports is set to enabled. Set the host group security to disabled on all ports, and then retry.
3020001	DMED020001: The value of the dirty sweep opportunity is outside the effective range. Specify a value within the effective range, and then retry.
3020002	DMED020002: The value of the dirty sweep stop opportunity is outside the effective range. Specify a value within the effective range, and then retry.
3020003	DMED020003: The value of the dirty sweep stop opportunity is smaller than the value of the dirty sweep opportunity. Specify the value, and then retry.
3020004	DMED020004: The advance read opportunity is outside the effective range. Specify a value within the effective range, and then retry.
3020005	DMED020005: The LU number is outside the effective range. Specify a LU number within the effective range, and then retry.
3020006	DMED020006: The reserved random buffer size is outside the effective range. Specify a value within the effective range, and then retry.
3030001	DMED030001: The specified LU is already invalid. Confirm the LU status, and then retry.
3030002	DMED030002: The number of LUs exceeds the maximum number of LUs. Delete unnecessary LUs, and then retry.
3030003	DMED030003: The specified LU is not invalid. Specify a valid LU, and then retry.
3030004	DMED030004: The specified LU capacity has exceeded the capacity of the original LU. Confirm the LU capacity, and then retry.
3030006	DMED030006: The specified LU is invalid. Specify a valid LU, and then retry.
3030007	DMED030007: The specified LU is unformatted. Specify a formatted LU, and then retry.
3040001	DMED040001: The specified LUs contain a Sub LU. Confirm the LU status, and then retry.
3040003	DMED040003: The specified LUs contain a regressed or detached LU. Confirm the LU status, and then retry.
3040004	DMED040004: The specified LUs contain an un-mounted drive. Confirm the drive status, and then retry.
3040005	DMED040005: The specified LUs contain an invalid LU. Confirm the LU status, and then retry.
3040006	DMED040006: Someone already logged in. Set the PASSWD-PROTECT option to disabled, and then retry.
3040007	DMED040007: There is no LU with an entry of format.
3040008	DMED040008: The format registration cannot be carried out because the LU state is normal with the drive blockage mode ON or because of degeneration.
ffffff	A check condition status was received, but cannot be analyzed.

1.4 Calling the Hitachi Data Systems Support Center

For troubleshooting information on HiCommand™ Device Manager client operations, please refer to the applicable user's guide: *HiCommand™ Device Manager Web Client User's Guide* (MK-91HC001), and/or *HiCommand™ Device Manager Command Line Interface (CLI) User's Guide* (MK-91HC007).

For troubleshooting information on HiCommand™ Device Manager Server operations, please refer to the *HiCommand™ Device Manager Server Installation and Configuration Guide* (MK-91HC002).

For troubleshooting information on disk array subsystem operations, please refer to the applicable document for the array and feature (e.g., *Hitachi Lightning 9900™ V Series LUN Manager User's Guide*, MK-92RD105; *Hitachi Thunder 9500™ V Series User and Reference Guide*, MK-92DF601; *Hitachi Thunder 9200™ User and Reference Guide*, MK-90DF504).

If you need to call the Hitachi Data Systems Support Center, make sure to provide as much information about the problem as possible, including the circumstances surrounding the error or failure and the exact content of any error messages displayed by the HiCommand™ Device Manager client and/or by the host system.

The worldwide Hitachi Data Systems Support Centers are:

- Hitachi Data Systems North America/Latin America
San Diego, California, USA
1-800-348-4357
- Hitachi Data Systems Europe
Contact Hitachi Data Systems Local Support
- Hitachi Data Systems Asia Pacific
North Ryde, Australia
011-61-2-9325-3300

Acronyms and Abbreviations

ACL	array control library
API	application program interface
CHA	channel adapter
CIM	common information model
CLI	command line interface
CMDDEV	command device
C/T	consistency time
ctl	controller
CV	custom volume
CVS	custom volume size (also called Virtual LVI/LUN)
DAMP	Disk Array Management Program
DASD	direct-access storage device
DCR	Dynamic Cache Residency (also called FlashAccess)
dev	device
DFW	DASD fast write
DKC	disk controller
ESCON®	Enterprise Systems Connection
FD	floppy disk
FDD	floppy disk drive
GUI	graphical user interface
HIHSM	Hitachi Internal Hierarchical Storage Manager (also called CruiseControl)
HORCA	Hitachi Open Remote Copy Asynchronous (also called TrueCopy Async)
HORCE	Hitachi Open Remote Copy Extended
HPAV	Hitachi Parallel Access Volume
HTTP	hypertext transfer protocol
ID	identifier, identification
IP	internet protocol
JRE	Java™ Runtime Environment
KB	kilobyte
LBA	logical block address
LDEV	logical device
LU	logical unit
LUN	logical unit number, logical unit
LUNM	LUN Manager
LUSE	LUN Expansion
LVI	logical volume image
MB	megabyte
MCU	main control unit

MIB	message information block
MIH	missing interrupt handler
MRCF	Multi-RAID Coupling Feature (also called ShadowImage)
M-VOL	main volume (TrueCopy - S/390®)
no	number
NVS	nonvolatile storage
OID	object ID
PCB	printed circuit board
PDEV	physical device
PP	Program Product
PPRC	Peer-to-Peer Remote Copy
P-VOL	primary volume (TrueCopy, ShadowImage)
RAID	redundant array of independent disks
RCP	remote control port
RCU	remote control unit
RIO	remote I/O
RMC	Remote Console
R-VOL	remote volume (TrueCopy - S/390®)
SNMP	simple network management protocol
SSB	sense byte
SSID	storage system ID
S-VOL	secondary volume (TrueCopy), source volume (ShadowImage - S/390®)
SVP	service processor
TC	TrueCopy
TC390	TrueCopy - S/390®
TC-MF	TrueCopy - S/390® (MF=mainframe)
TID	target ID
T-VOL	target volume (ShadowImage - S/390®)
WBEM	Web-Based Enterprise Management
WWN	worldwide name
XML	extended markup language
XRC	Extended Remote Copy