



**Hitachi Freedom Storage™
Thunder 9200™
Password Protection 9200
(5800/9200)
User's Guide**

© 2001 Hitachi Data Systems Corporation, ALL RIGHTS RESERVED

Notice: No part of this publication may be reproduced or transmitted in any form or by any electronic or mechanical means, including photocopying and recording, or stored in a database or retrieval system for any purpose, without the express written permission of Hitachi Data Systems Corporation.

Hitachi Data Systems reserves the right to make changes to this document at any time without notice and assumes no responsibility for its use. Hitachi Data Systems products or services can only be ordered under the terms and conditions of Hitachi Data Systems' applicable agreements, including license agreements. All of the features described in this document may not be currently available. Refer to the most recent product announcement or contact your local Hitachi Data Systems sales office for information on feature and product availability.

This document contains the most current information available at the time of publication. When new and/or revised information becomes available, this entire document will be updated and distributed to all registered users.

Trademarks

Hitachi Data Systems[®] is a registered trademark and service mark of Hitachi, Ltd. The Hitachi Data Systems design mark is a trademark and service mark of Hitachi, Ltd.

Hitachi Freedom Storage[™] and Thunder 9200[™] are trademarks of Hitachi Data Systems Corporation.

All other brand or product names are or may be registered trademarks, trademarks or service marks of and are used to identify products or services of their respective owners.

Notice of Export Controls

Export of technical data contained in this document may require an export license from the United States government and/or the government of Japan. Contact the Hitachi Data Systems Legal Department for any export compliance questions.

Document Revision Level

| Revision | Date | Description |
|--------------|--------------|--|
| MK-90DF528-P | January 2001 | Preliminary Release. |
| MK-90DF528-0 | April 2001 | Initial Release. Supersedes and replaces MK-90DF528-P. |
| MK-90DF528-1 | May 2001 | Supersedes and replaces MK-90DF528-0. |

Source Document Revision Level

The following source document was used to produce this 5800/9200 user guide:

DF-F500-WSPS Password Protection User's Guide, First Edition.

Changes in this Revision

Changed the title page to: *Hitachi Freedom Storage™ Thunder 9200™ Password Protection 9200™ (5800/9200) User's Guide.*

Preface

Password Protection 9200 is installed on your Thunder 9200 disk array unit. Before using Password Protection 9200, read the operating procedures and notices included in this guide. Carefully follow the safety precautions and instructions.

The *Hitachi Freedom Storage™ Thunder 9200™ Password Protection 9200 User's Guide* assumes that:

- The user has a background in data processing and understands direct-access storage device subsystems and their basic functions.
- The user is familiar with the Hitachi Freedom Storage™ Thunder 9200™ array subsystem.

For further information on Hitachi Data Systems products and services, please contact your Hitachi Data Systems account team, or visit the Hitachi Data Systems worldwide web site at <http://www.hds.com>. For specific information on the supported host systems and platforms for the 9200, please refer to the user documentation for the product, or contact the vendor's customer support service.

Note: The term “9200” refers to the Hitachi Thunder 9200™ subsystem, unless otherwise noted. Please refer to the *Hitachi Thunder 9200™ User and Reference Guide* (MK-90DF504) for further information on the 9200 disk array subsystem.

Note: The use of Password Protection 9200 and all other Hitachi Data Systems products is governed by the terms of your license agreement(s) with Hitachi Data Systems.

Safety Precautions

Note the following when using Password Protection 9200:

- Only administrators, system engineers, and field engineers who are familiar with Hitachi Data Systems disk array units are allowed to run the Password Protection 9200 function.
- Make certain you read and fully understand this guide before you operate the Password Protection 9200 function.
- Carefully follow instructions included with the “CAUTION” label.



Failure to follow these instructions can result in serious system damage and/or the loss of system data.

Contents

| | | |
|------------------|---|-----------|
| Chapter 1 | Introducing Password Protection 9200 | 1 |
| 1.1 | Specifications | 2 |
| Chapter 2 | Installing and Uninstalling Password Protection 9200 | 3 |
| 2.1 | Installation..... | 3 |
| 2.2 | Uninstallation | 7 |
| Chapter 3 | Enabling/Disabling Password Protection 9200 | 11 |
| Chapter 4 | Setting Security Information | 13 |
| Chapter 5 | Logging In and Logging Out..... | 15 |
| 5.1 | Logging In..... | 15 |
| 5.2 | Logging Out | 17 |
| 5.3 | Logging In Forcibly | 18 |

List of Tables

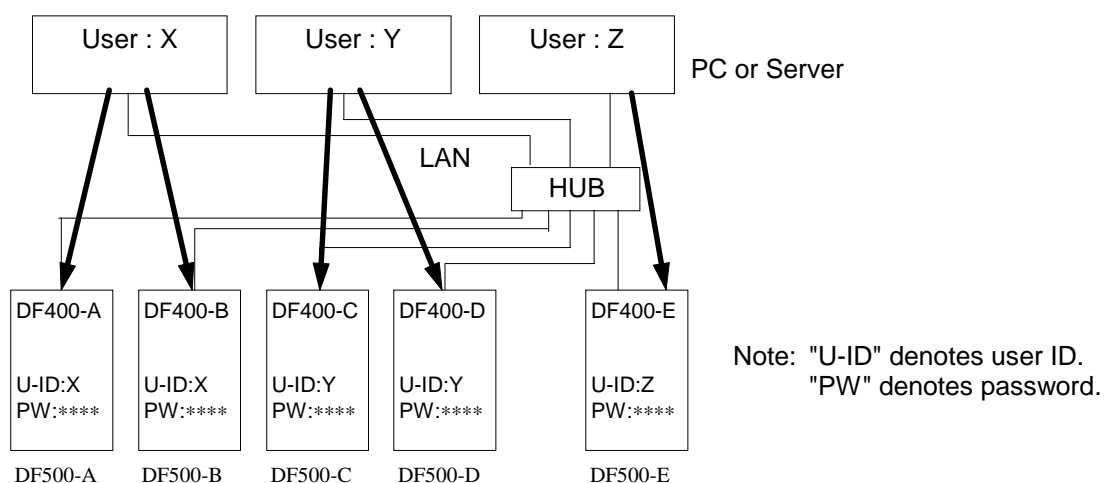
| | | |
|-----------|---|---|
| Table 1.1 | Outline of Password Protection 9200 | 1 |
| Table 1.2 | Specifications of Password Protection 9200..... | 2 |

Chapter 1 Introducing Password Protection 9200

By using Password Protection 9200, you can limit the number of Resource Manager 9200 users that are permitted to access the optional 9200. Users can also be prevented from accessing it at the same time. This can deter 9200 information from being offered to users who have no right to access and can prevent concurrent updates to 9200 configuration information by exclusively controlling the users.

To register the user, specify a user ID and a password using the Resource Manager 9200. The 9200 refers to the registered user IDs and passwords when a login is made from the Resource Manager 9200 and rejects a login made by an unregistered user. The 9200 which has been logged in by a certified user rejects another login attempted by another user.

The following is an outline of the Password Protection 9200 control feature.



The following table shows whether access by each user of Resource Manager 9200 from the example above is accepted or rejected.

Table 1.1 Outline of Password Protection 9200

| 9200 User | A | B | C | D | E |
|--------------|----------|----------|----------|----------|----------|
| X | Accepted | Accepted | Rejected | Rejected | Rejected |
| Y | Rejected | Rejected | Accepted | Accepted | Rejected |
| Z | Rejected | Rejected | Rejected | Rejected | Accepted |

1.1 Specifications

Specifications of the Password Protection 9200 control feature are shown below.

Table 1.2 Specifications of Password Protection 9200

| Item | Specifications |
|--|--|
| Devices which can set the feature | <ul style="list-style-type: none">• SCSI and Fibre Channel interface devices can set the feature.• Only devices in which the Password Protection 9200 control feature (DF-F500-WSPS), which is a software option, is installed can set this feature. |
| Registration of the user ID and password and guard against access | <ul style="list-style-type: none">• Up to 20 sets of a user ID and a password can be registered for one 9200 from the Resource Manager 9200.• Future login attempts by a user of Resource Manager 9200 whose user ID and password are not registered are rejected. (Note 1) |
| Rejection of concurrent logins attempted by users of Resource Manager 9200 | <ul style="list-style-type: none">• The 9200 which has been logged in by a user of Resource Manager 9200 whose user ID and password have been registered will reject another login attempted by another user even if its user ID and password have been registered, until the former user logs out.• An error message issued by Resource Manager 9200 will clarify whether the login is rejected due to non-registration or a result of a concurrent login attempt. |

Note 1: Service personnel use the Resource Manager 9200 for maintenance of array units as well. When registering user IDs, register the user ID for service personnel.

Chapter 2 Installing and Uninstalling Password Protection 9200



The User ID and Password must be configured immediately after the software key has been installed. Please contact Hitachi Data Systems Customer Support if you lose your password and are unable to access the system.

The Password Protection 9200 option is usually unselectable (closed); to make it available, you must install Password Protection 9200 (DF-F500-WSPS) and make its functions selectable (open). **To install this function, an option FD provided with the optional feature or the key code is required.**

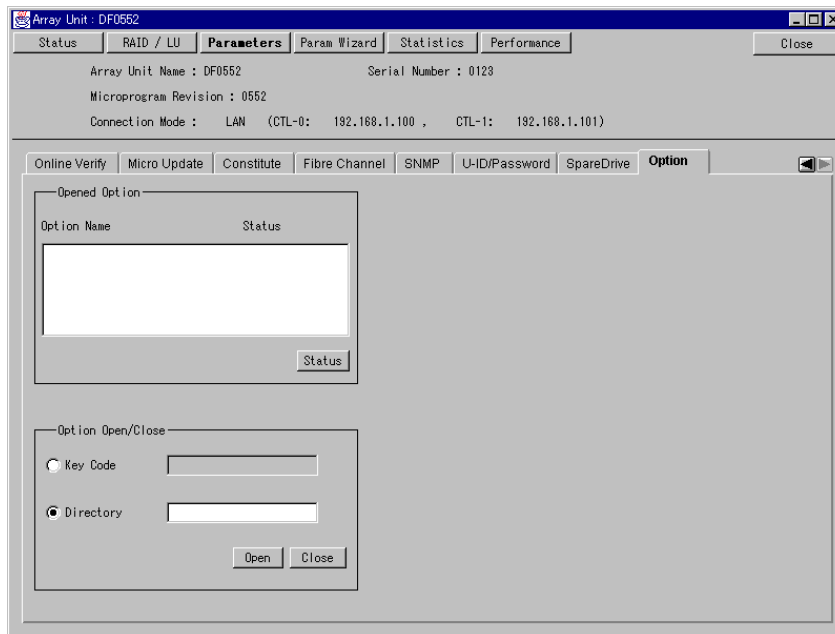
Follow the instructions below to install Password Protection 9200 (DF-F500-WSPS). Password Protection 9200 is installed and uninstalled using Resource Manager 9200. For operating procedures of the Resource Manager 9200, refer to the *Resource Manager 9200 User's Guide (Part 1: Graphical User Interface)*.

Note: Before installing and uninstalling, make sure that the array unit is in normal operating condition. If a failure such as a controller blockade has occurred, installation and uninstallation operations cannot be performed.

2.1 Installation

The following paragraphs describe installation procedures performed by using the GUI version of Resource Manager 9200.

1. Start Resource Manager 9200 and change the mode of operating to **Management Mode**.
2. Register the array unit in which you will install Password Protection 9200. Connect to this registered array unit; the corresponding window will be displayed.
3. Click the **Parameters** button.
4. Click the **Option** tab.

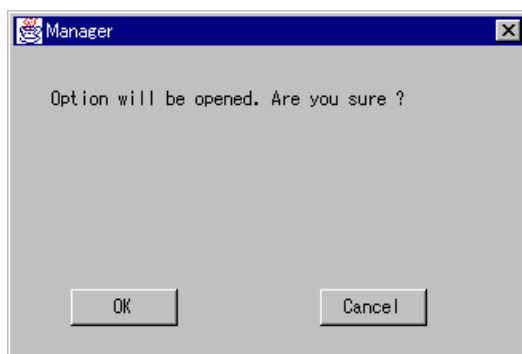


5. Unlock the optional feature by using either of the following:

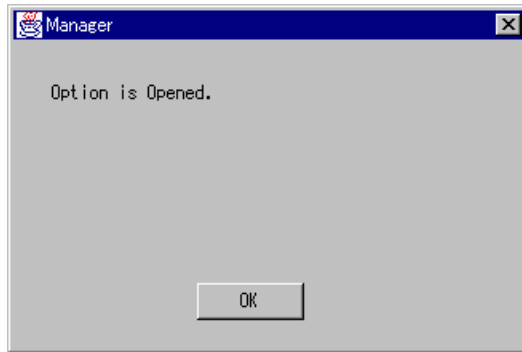
- Password Protection 9200 Key FD
- Key Code

Password Protection 9200 Key FD

- a) Insert the key FD into the FDD of the system where Resource Manager 9200 is installed.
- b) Click the **Directory** radio button to enter a path to the FD.
- c) Click the **Open** button.
- d) A screen appears, requesting confirmation to open Password Protection 9200. Click the **OK** button.

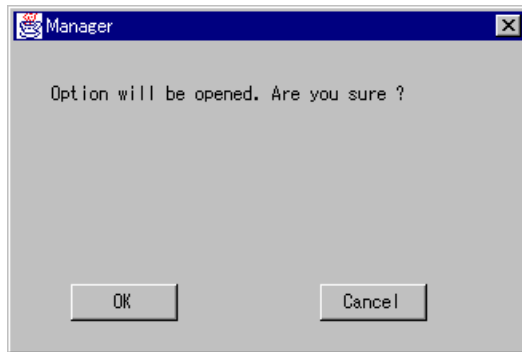


- e) A message appears, confirming that this feature is open. Click the **OK** button.

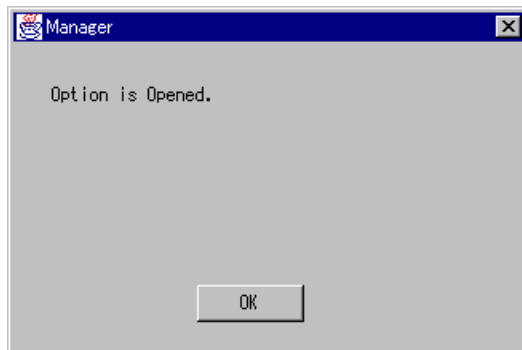


Key Code

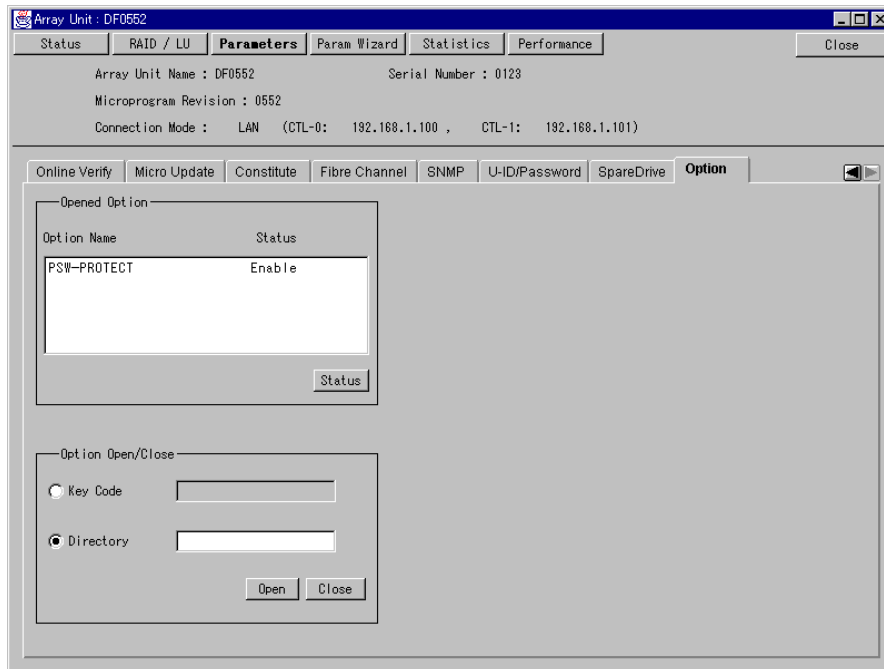
- a) Click the **Key Code** radio button to enter a key code in the text box.
- b) Click the **Open** button.
- c) A screen appears, requesting a confirmation to open the Password Protection 9200 option. Click the **OK** button.



- d) A message appears, confirming that this feature is open. Click the **OK** button.



6. The window is updated and then displayed.



CAUTION The User ID and Password must be configured immediately after the software key has been installed (see Chapter 4). Please contact Hitachi Data Systems Customer Support if you lose your password and are unable to access the system.

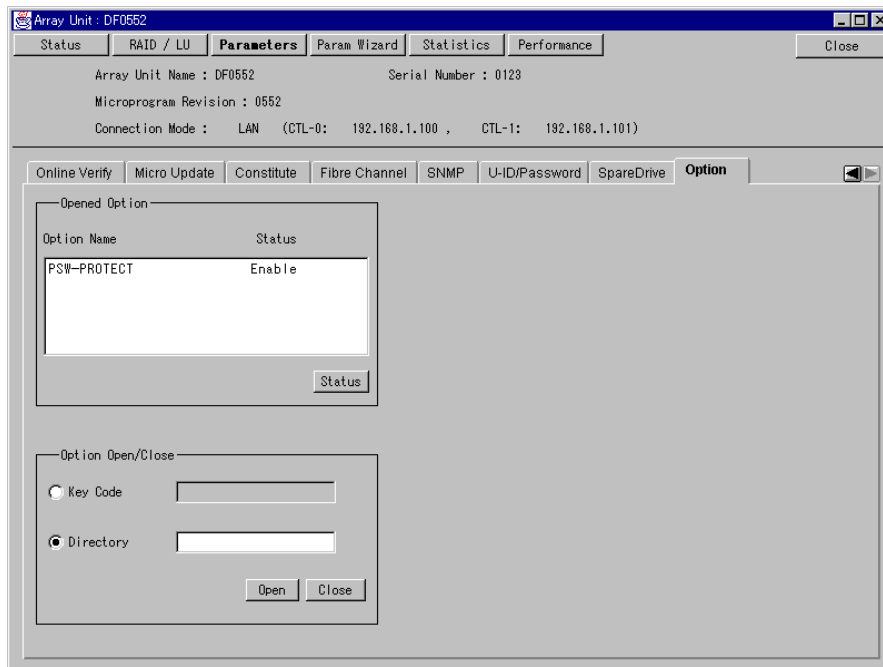
2.2 Uninstallation

Follow the instructions below to uninstall Password Protection 9200. When it is uninstalled, the Password Protection 9200 is not available (locked) until it is opened by the Option floppy disk or the key code.

To uninstall Password Protection 9200, the key FD provided with the Password Protection 9200 feature or the key code described in the key FD is required.

Follow the instructions below to uninstall Password Protection 9200 (DF-F500-WSPS).

1. Start Resource Manager 9200 and change the mode of operating to **Management Mode**.
2. Register the array unit in which you will install Password Protection 9200. Connect to this registered array unit; the corresponding window will be displayed.
3. Click the **Parameters** button.
4. Click the **Option** tab.

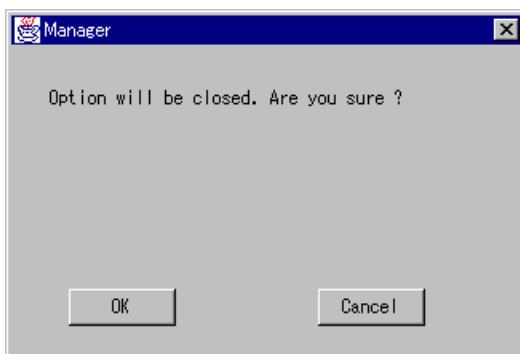


5. Close (lock) the optional feature by using either of the following:

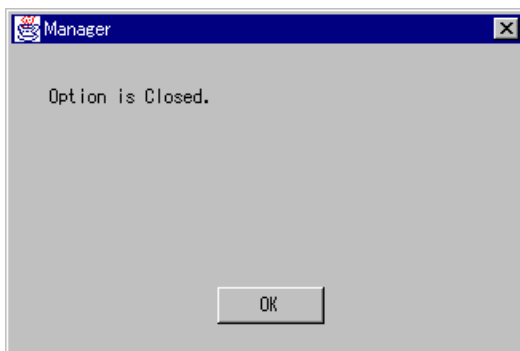
- Password Protection 9200 Key FD
- Key Code

Password Protection 9200 Key FD

- a) Insert the key FD into the FDD of the system where Resource Manager 9200 is installed.
- b) Click the **Directory** radio button to enter a path to the FD.
- c) Click the **Close** button.
- d) A screen appears, requesting a confirmation to close the Password Protection 9200 option. Click the **OK** button.

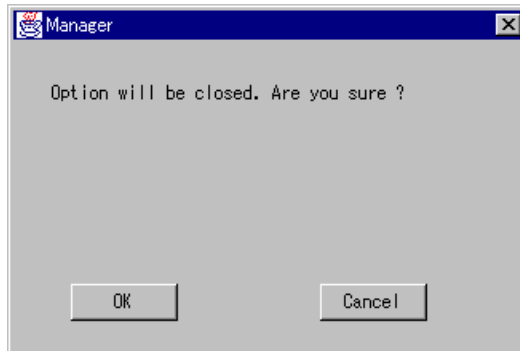


- e) A message appears, confirming that this feature is closed. Click the **OK** button.

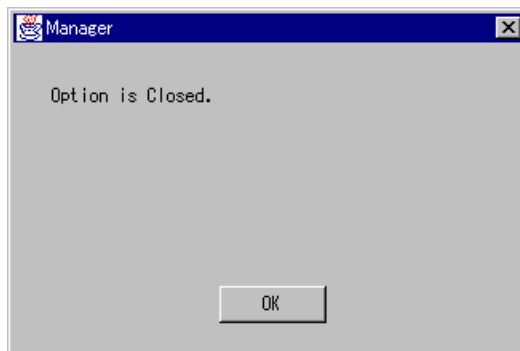


Key Code

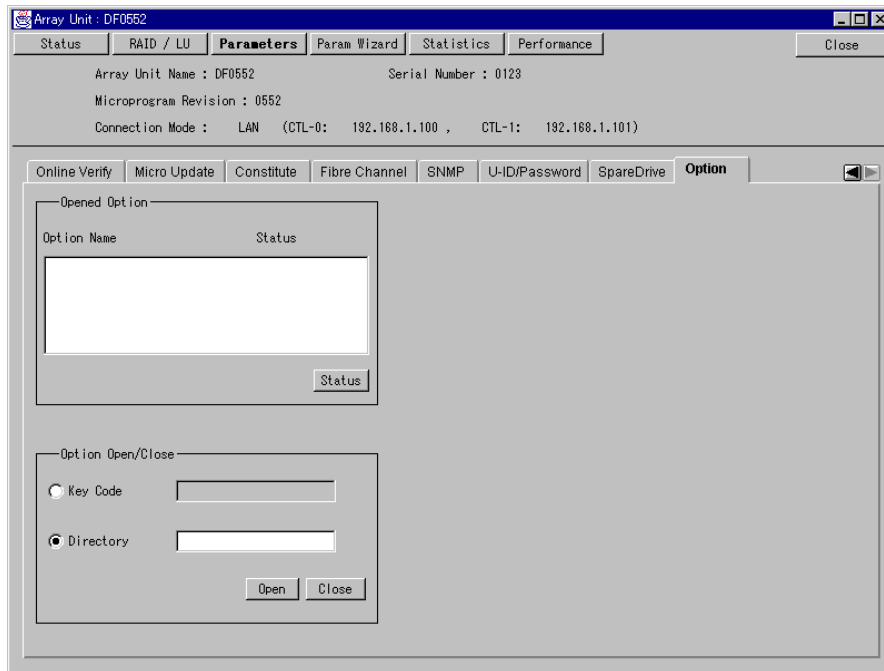
- a) Click the **Key Code** radio button to enter a key code in the text box.
- b) Click the **Close** button.
- c) A screen appears, requesting a confirmation to close the Password Protection 9200 option. Click the **OK** button.



- d) A message appears, confirming that this feature has been closed. Click the **OK** button.



6. The window is updated and then displayed.



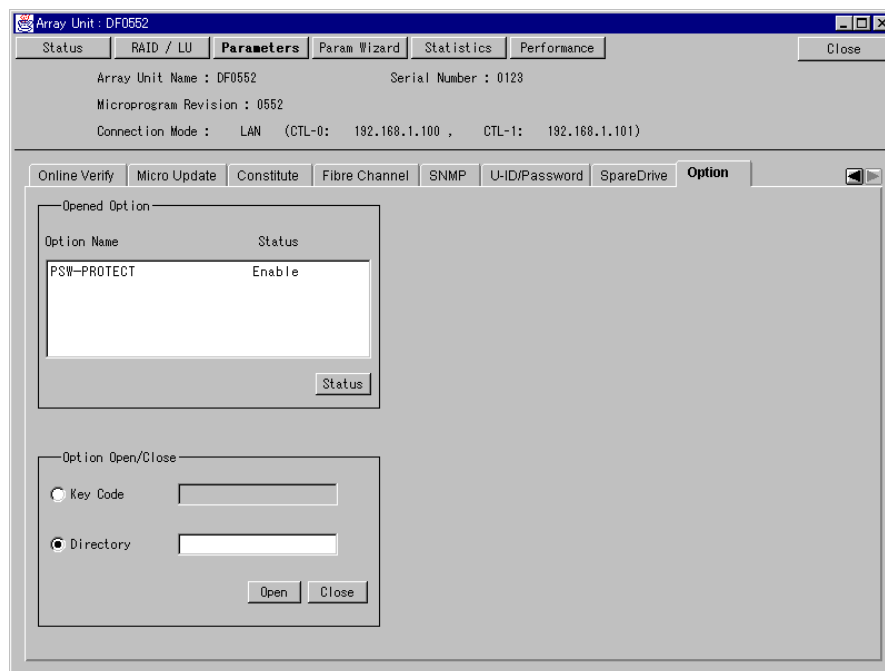
Chapter 3 Enabling/Disabling Password Protection 9200

The Password Protection 9200 function can be set to Disable or Enable depending on the conditions in which the feature has been installed.

The following paragraphs describe a procedure for setting the function to Disable or Enable while the Password Protection 9200 Control feature stays in an unlocked state.

These procedures can be performed by using the GUI version of Resource Manager 9200.

1. Start Resource Manager 9200 and change the mode of operating to **Management Mode**.
2. Register the array unit in which you will install Password Protection 9200. Connect to this registered array unit; the corresponding window will be displayed.
3. Click the **Parameters** button.
4. Click the **Option** tab.

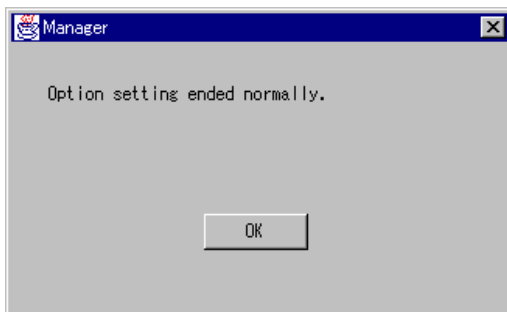


5. Click on **PSW-PROTECT** in the **Option Name** text box, then click the **Status** button.

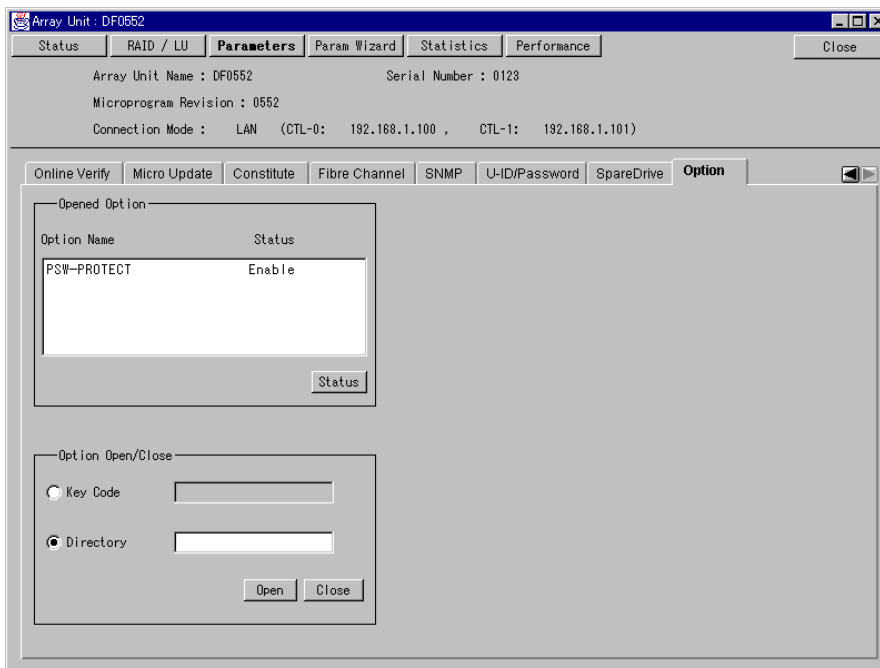
6. The **Option Status** screen will be displayed. Select the **Enable** or **Disable** radio button click **OK**.



7. A message appears, confirming that this option is set. Click the **OK** button.



8. The window is updated and then displayed.



Chapter 4 Setting Security Information

The operation to set the User ID and Password with Resource Manager 9200 is as follows.

1. Start Resource Manager 9200 and change the mode of operating to **Management Mode**.
2. Register the array unit in which you will install Password Protection 9200. Connect to this registered array unit; the corresponding window will be displayed.
3. Click the **Parameters** button.
4. Click the **U-ID/Password** tab.

The screenshot shows a software window titled "Array Unit : DF0552". It has several tabs: "Status", "RAID / LU", "Parameters", "Param Wizard", "Statistics", and "Performance". The "Parameters" tab is active. Below the tabs, there is a "Close" button. The main area displays the following information: "Array Unit Name : DF0552", "Serial Number : 0123", "Microprogram Revision : 0552", and "Connection Mode : LAN (CTL-0: 192.168.1.100 , CTL-1: 192.168.1.101)". Below this, there is a row of buttons: "LANConst", "Restore Options", "Online Verify", "Micro Update", "Constitute", "Fibre Channel", "SNMP", and "U-ID/Password". The "U-ID/Password" button is selected. The "U-ID/Password" window contains an "Operation menu" with four radio buttons: "Set User ID" (selected), "Change User ID", "Delete User ID", and "Change Password". To the right of the menu is a "User ID Number" field with a "Number" label and a text input box containing the digit "1". Below the menu are two sections: "User ID" with "Old User ID" and "New User ID" text boxes, and "Password" with "Old Password", "New Password", and "Check Password" text boxes. An "OK" button is at the bottom center.



The User ID and Password must be configured immediately after the software key has been installed. Please contact Hitachi Data Systems Customer Support if you lose your password and are unable to access the system.

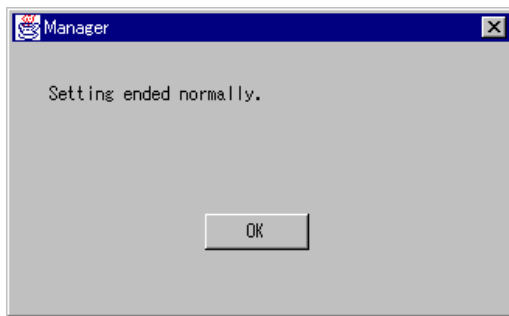
- From the **Operation menu**, click the **Set User ID** option button. In the **New User ID**, **New Password** and **Check Password** fields, enter their respective data. Click the **OK** button.

This menu contains the following:

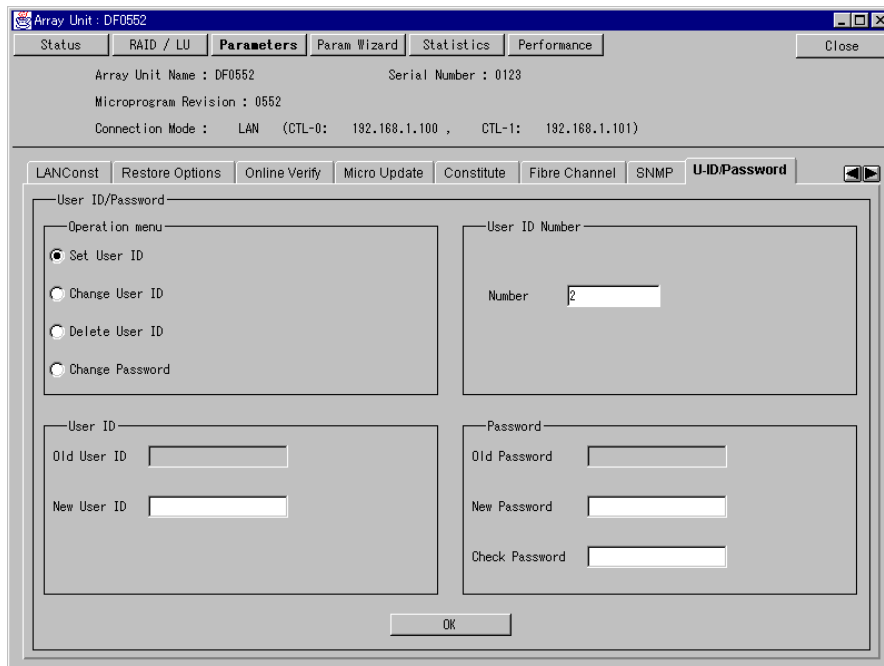
- **New User ID:** Specifies a user ID to register. Specified with one-byte coded alphanumeric and special symbols - (**minus**) and _ (**underline**) of 4 to 12 characters long.
- **New Password:** Specifies the password of a user ID to register. Specified with one-byte coded alphanumeric and special symbols - (**minus**) and _ (**underline**) of 4 to 12 characters long.
- **Check Password:** Specifies the same password as that of a user ID to register. Specified with one-byte coded alphanumeric and special symbols - (**minus**) and _ (**underline**) of 4 to 12 characters long.

Check the settings for complete User ID and Password.

A message appears, confirming that the registration is complete. Click the **OK** button.



The number of registered user IDs is updated, then displayed.

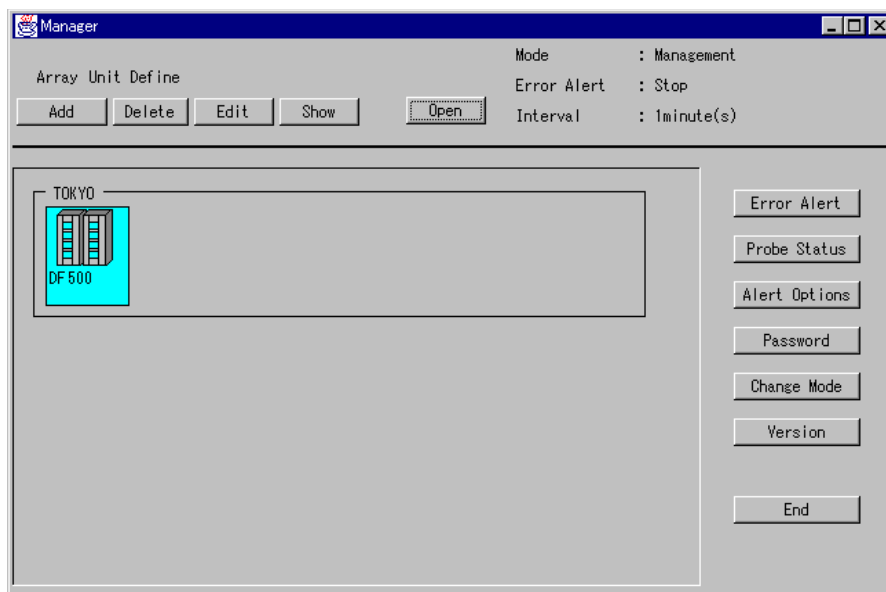


Chapter 5 Logging In and Logging Out

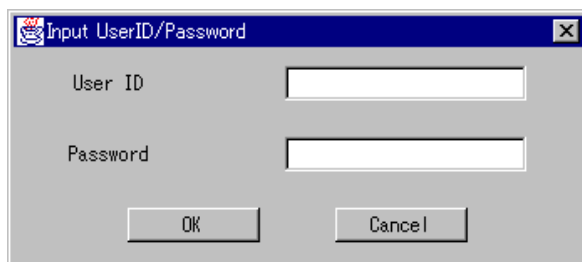
This chapter explains how to log in and log out using Resource Manager 9200. Management of operators by user ID is effective when operating Resource Manager 9200 in Management mode. When operating Resource Manager 9200 in Monitor mode, Resource Manager 9200 may be operated regardless of whether a user ID has been registered or not.

5.1 Logging In

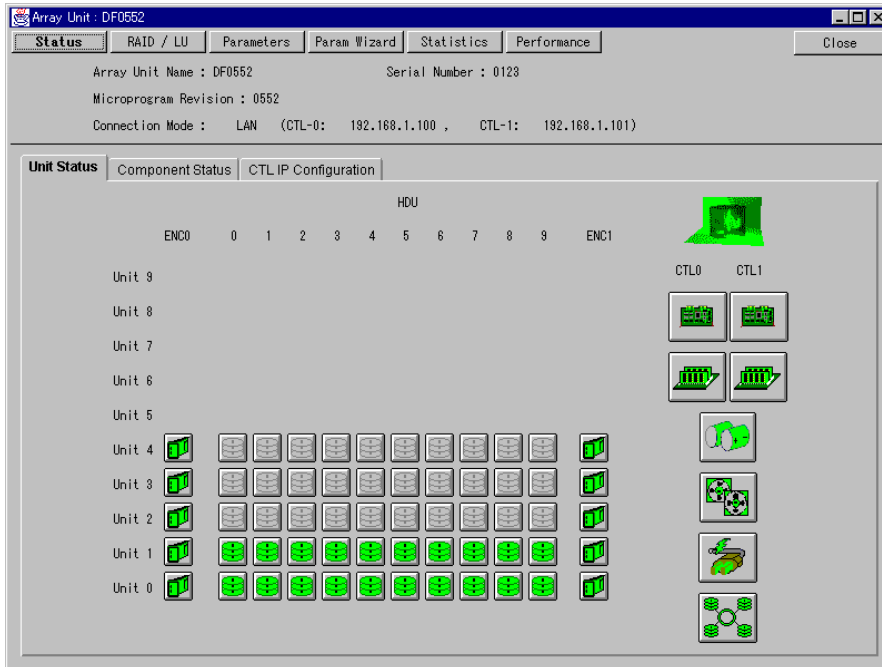
1. Set the mode of maintenance to **Management** mode.
2. In the main window, click the icon for the array unit to be connected, then click the **Open** button.



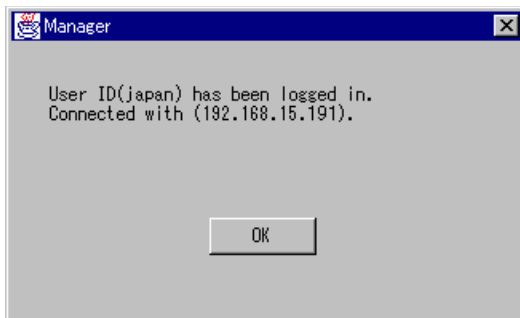
3. Enter a registered user ID and its password, then click the **OK** button.



4. Log in with the registered user ID. The unit window is displayed.

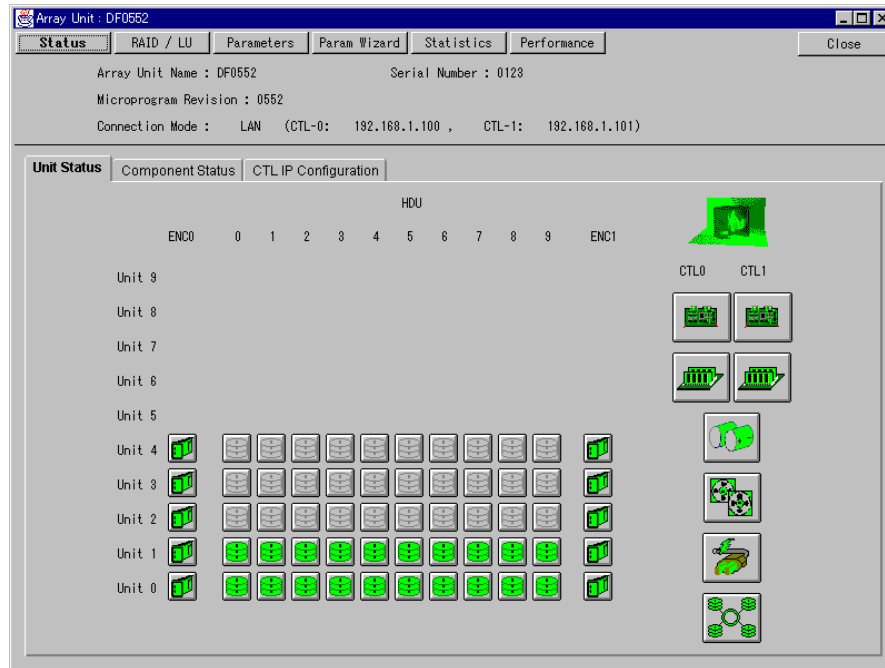


5. Click the icon of an array unit to which a user has already logged in. Click the **Open** button. A message appears, confirming that a user has already logged in.
The message indicates the user ID of the logged-in user and connection information.
6. Click the **OK** button; retry login again.



5.2 Logging Out

1. Click the **Close** button on the unit window.

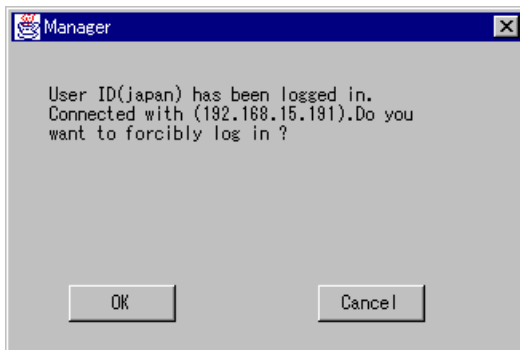


5.3 Logging In Forcibly

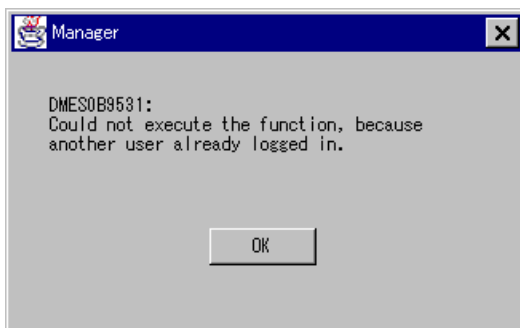
This section describes how to log out a user ID forcibly from an array unit to which a user has already logged in with the user ID, then forcibly log in with another registered user ID.

1. Click the icon of an array unit to which a user has already logged in. Click the **Open** button. A message appears, confirming that a user has already logged in.

The message indicates the user ID of the logged-in user and connection information.



Message while operating in the unit window.



A user ID with which a user has logged in and connection information are not displayed.

2. Close the unit window, then open it again. Check the user ID of the user who has logged in.
3. Terminate Resource Manager 9200, and restart Resource Manager 9200 by appending the **-discon** option of the Forcibly Logging In command.
4. *When using Windows:* Edit the description contents of **startmgr.bat** (a batch file used to start the manager). Add the **-discon** option.

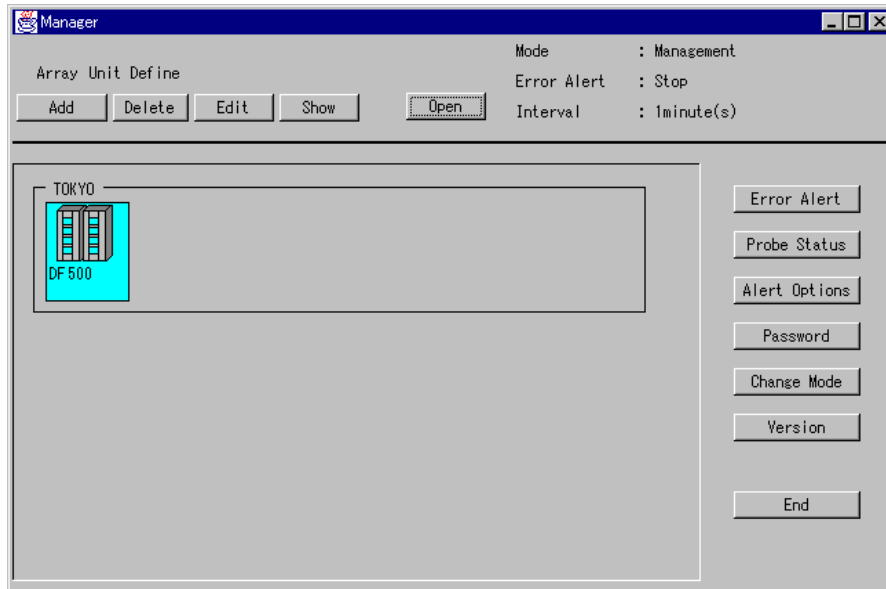
Example: `jrew -cp .\CONFMNG.JAR jp.co.hitachi.str.diskarray.DiskArrayManager -discon`

When using Solaris: Start the Manager by appending the **-discon** option when starting.

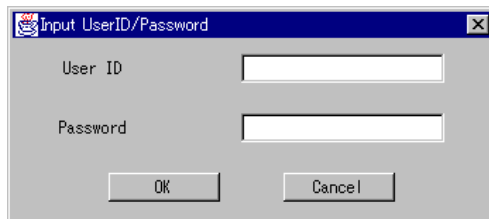
Example: `./startmgr -discon`

Next, log in by the following procedure.

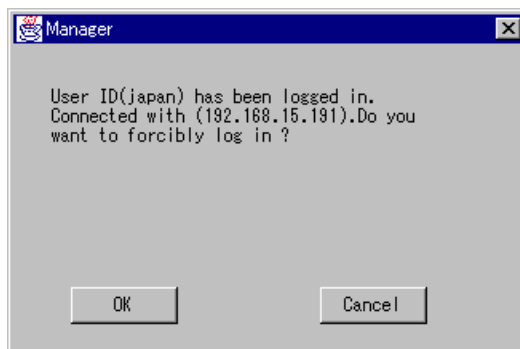
1. Restart the Resource Manager 9200, and set the mode of operation to Maintenance mode.
2. Click the icon of the array unit to be connected on the main window. Then click the **Open** button.



3. Enter a registered user ID and its password. Then click the **OK** button.



4. A user ID with which a user has logged in and its password are displayed. When logging in forcibly, click the **OK** button.



Logging in with the entered user ID is completed. The unit window is displayed.

