

HBAnyware Installation and Start Up

1. Introduction

This document describes the installation procedures and the start up process of the Emulex HBAnyware Fibre Channel Remote Management application.

The release kit consists of

- This file readme.doc and readme.pdf
- setupapps.exe file for installation

2. System Requirement

- The application runs on Windows NT 4.0, Windows 2000, and Windows Server 2003 - 32-bit. Windows NT 4.0 requires Service Pack 6.
- Miniport driver (with Adjunct driver) version 5.10A6 or later
- OR Port driver version 2.20A8 or later
- OR StorPort driver version 1.01a8 or later has to be installed before HBAnyware installation.

3. Component Revisions

This release kit contains the following main components:

- HBAnyware version 2.0A13
- HBAnyware Discovery Server version 2.0A13
- hbaapi.dll version 2,0,7,0
- emulexhbaapi.dll version 2,0,7,0
- elxcfg.exe version 1.41A14
- lputilnt.exe version 1,7,A,16
- elxdfcrma.dll version 1,0,0,7
- setupapps.exe (Product Version 2.00.19)

4. Installation

NOTES: Please follow these notes before installation:

4.1. If you currently have HBAnyware version 1.00A2 installed, please use Control Panel-Add/Remove Programs to remove that version of HBAnyware as described in Section 7 then run setupapps.exe again.

4.2 If you had installed an older version of the Miniport Driver in the past (prior to version 5.00A8), the Utility Program lputilnt.exe is still left over in %WINNT\system32. Please manually delete this file and any short cut icon on your Desktop or in your Start/Programs associated with this lputilnt.exe file.

Also, please NOTE that if you are upgrading from a Miniport driver version older than 5.00A8, you MUST reboot the system before doing the installation of the applications kit.

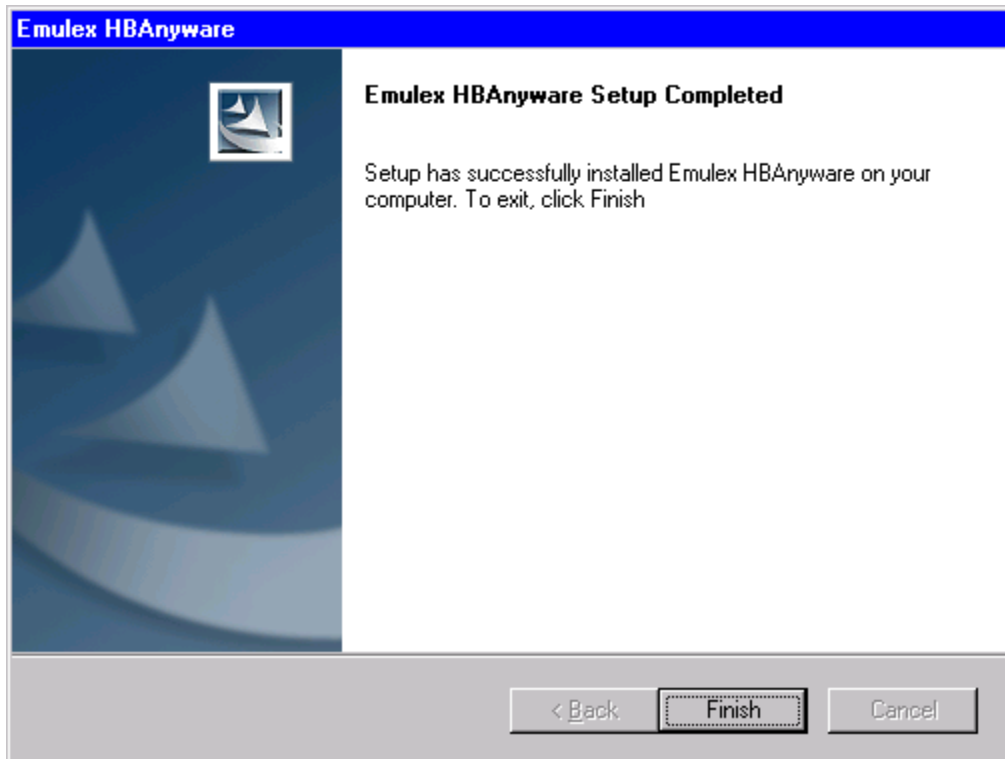
4.3 If you had installed an older version of the Port Driver in the past (prior to version 2.20A8), the Configuration Program elxcfg.exe is still left over in %WINNT\system32. Please manually delete this file and any short cut icon on your Desktop or in your Start\Programs associated with this elxcfg.exe file.

Also, please NOTE that if you are upgrading from a Port driver version older than 2.20A8, you MUST reboot the system before doing the installation of the applications kit.

Follow these steps for HBAnyware installation:

- a) Copy setupapps.exe file to your desired local drive directory
- b) Run setupapps.exe from that directory
- c) If your system does not have Windows Installer, setupapps.exe will install it for you by extracting it from setupapps.exe itself, then installs HBAnyware and restarts your system

- d) Click Finish in the last dialog box to exit Setup. Your HBAnyware installation is then completed.

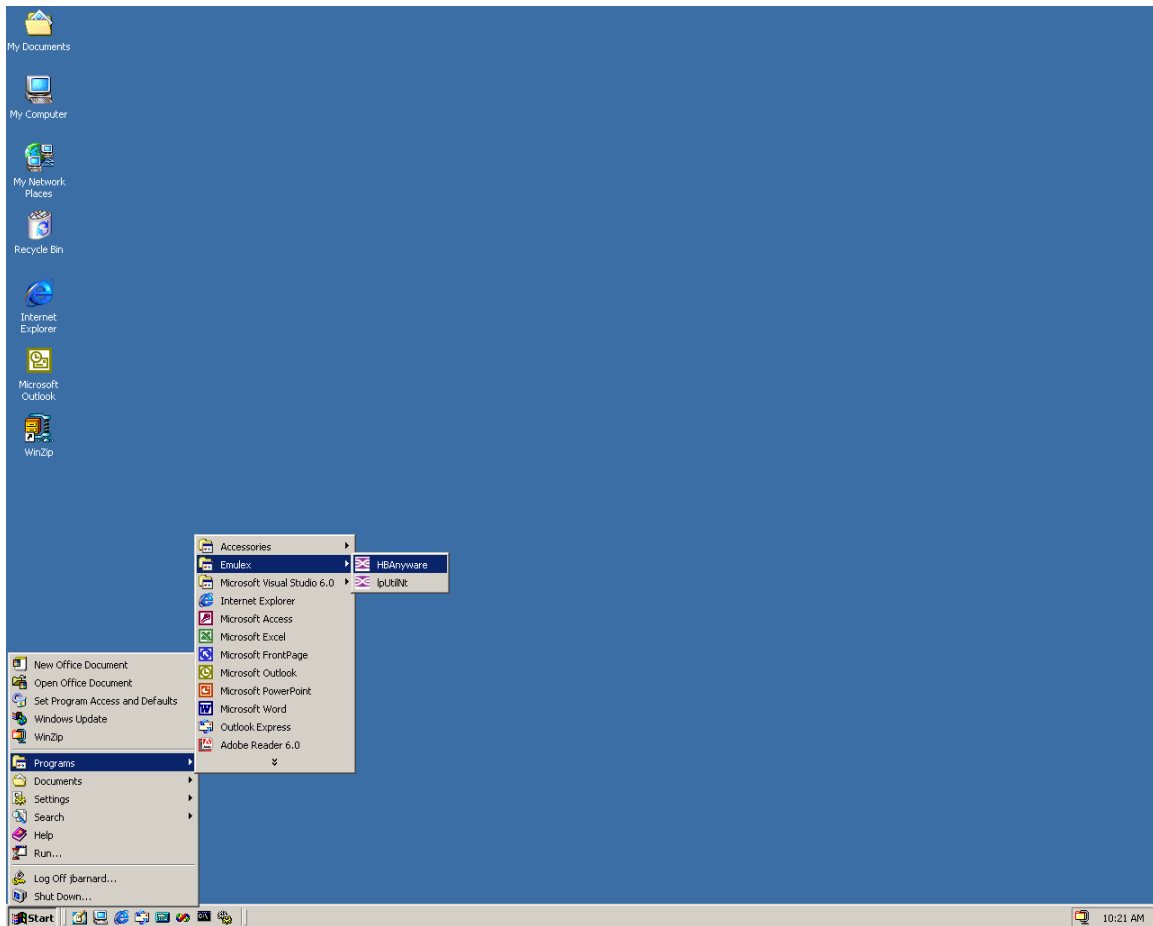


5. Installation Verification

This step is not necessary. However, if you want to verify that the installation is actually successful, you can locate the HBAnyware server and client as follows:

5.1. HBAnyware Client

Click Start, Programs, Emulex, you will see LpUtilNt and/or elxcfg and HBAnyware listed with the Emulex icons as shown below. LpUtilNt is the diagnostic program for the Miniport driver. Elxcfg is the Configuration program for the Port driver. HBAnyware is the client program.

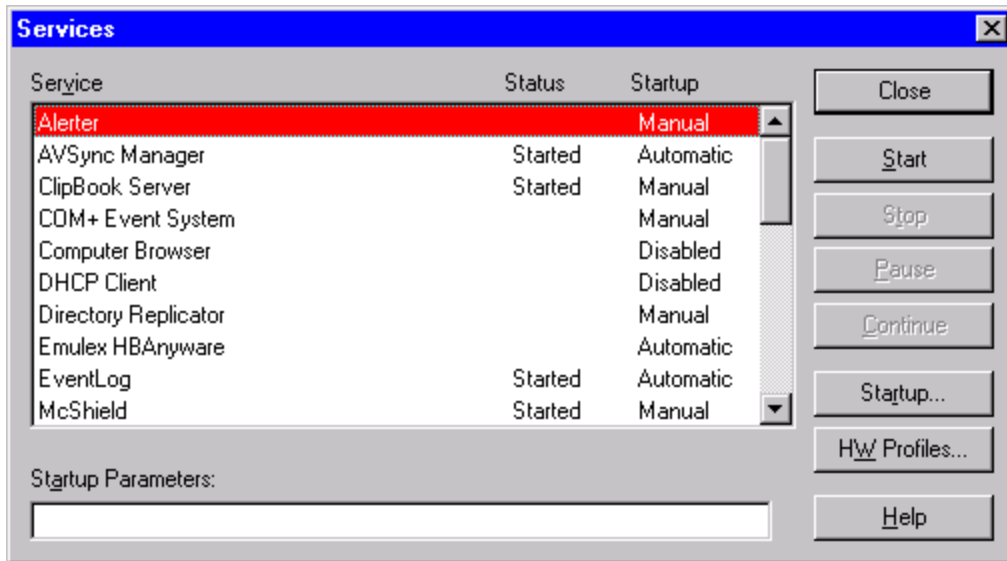


5.2. HBAnyware Server

HBAnyware Server has been installed as an NT service.

To see this service

- With Windows NT 4.0: Click Start-Settings-Control Panel then double click Services
- With Windows 2000: Click Start-Settings-Control Panel-Administrative Tools then double click Services



This service is listed as Emulex HBAnyware.

6. Start Up

6.1. Server Start Up

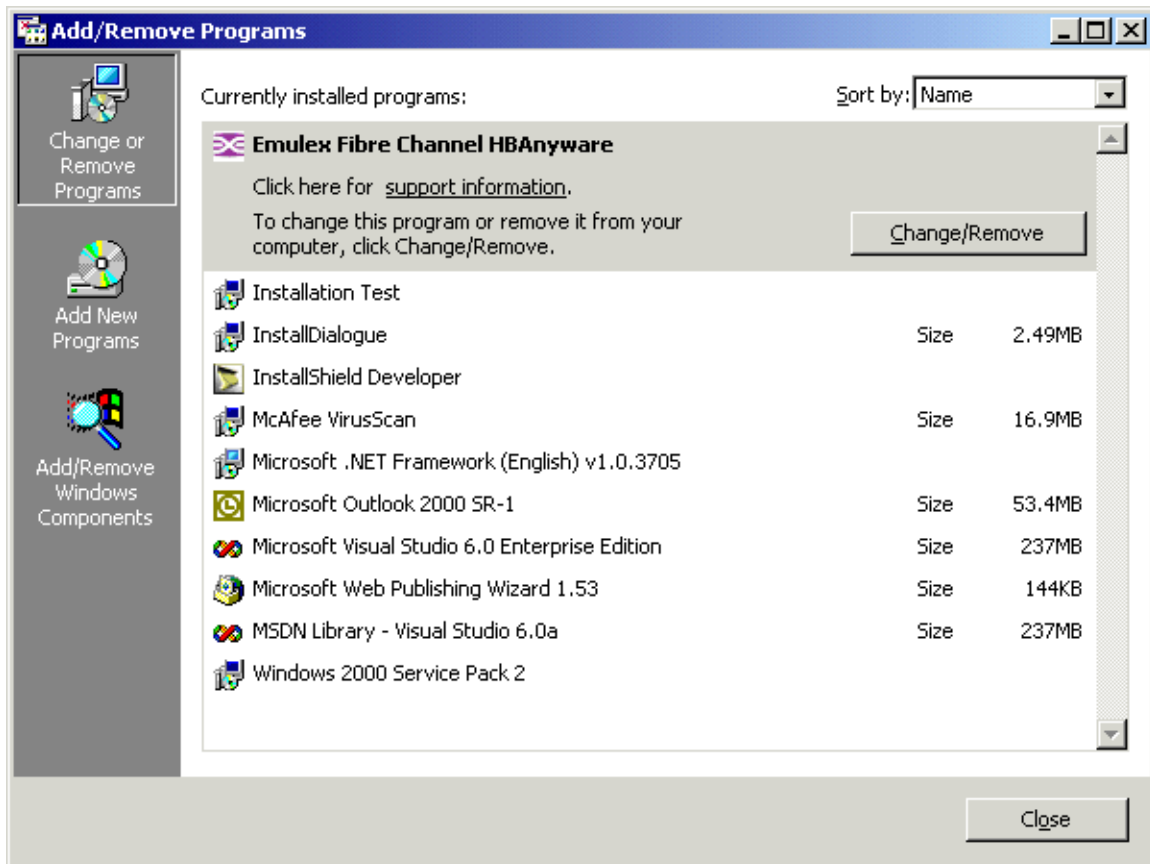
The HBAnyware server will automatically start after installation and every time your system restarts.

6.2. Client Start Up

Click the HBAnyware item in the Programs, Emulex menu to start up the HBAnyware client on your system.

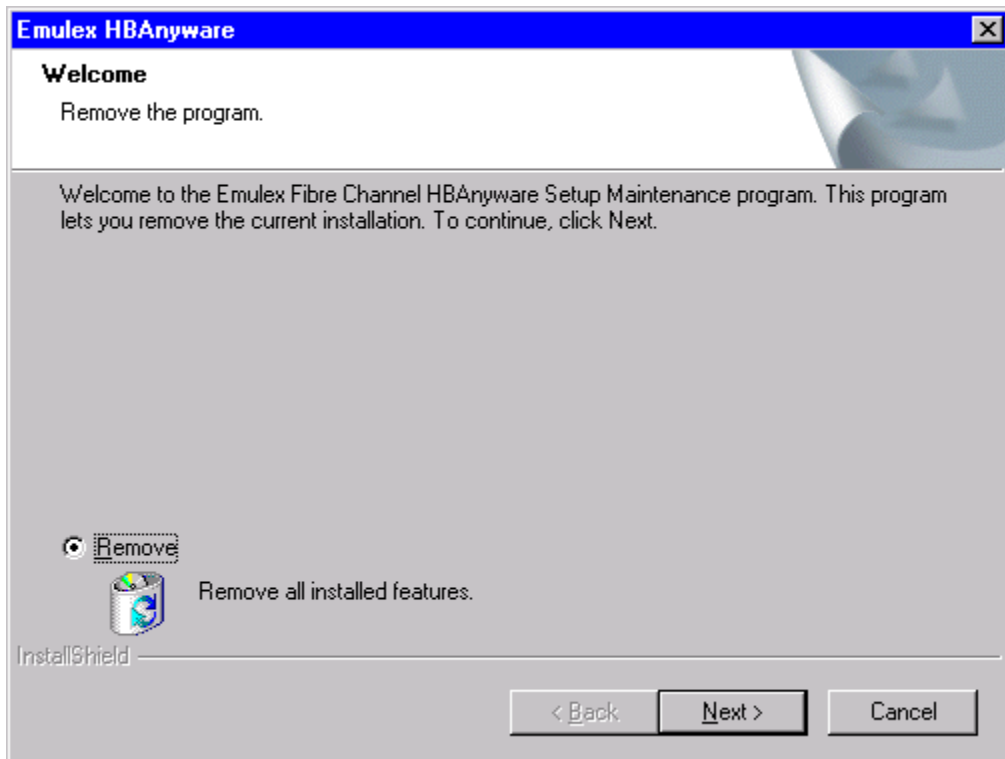
7. Uninstallation: Use Add/Remove Programs

Click Start-Settings-Control Panel then double click the Add/Remove Programs item. With Windows 2000, you will get the dialog box shown below



Click the Change/Remove button to proceed.

setupapps.exe will let you remove the current installation via this dialog box



Click Next to have the program removed.