



System i  
Networking  
Routed

*Version 6 Release 1*







System i  
Networking  
RouteD

*Version 6 Release 1*

**Note**

Before using this information and the product it supports, read the information in “Notices,” on page 9.

This edition applies to version 6, release 1, modification 0 of IBM i5/OS (5761-SS1) and to all subsequent releases and modifications until otherwise indicated in new editions. This version does not run on all reduced instruction set computer (RISC) models nor does it run on CISC models.

© Copyright International Business Machines Corporation 2000, 2008. All rights reserved.

US Government Users Restricted Rights – Use, duplication or disclosure restricted by GSA ADP Schedule Contract with IBM Corp.

---

## Contents

<b>RouteD . . . . .</b>	<b>1</b>
PDF file for RouteD . . . . .	1
RouteD configuration commands . . . . .	1
RouteD attribute commands . . . . .	2
Work with RouteD Configuration command . . . . .	2
Scenario: RouteD configuration . . . . .	3
RIP_INTERFACE statement . . . . .	4
Supply values . . . . .	5
DIST_ROUTES_IN . . . . .	5
Metric . . . . .	6
Community. . . . .	6

Additional parameters . . . . .	6
BLOCK . . . . .	6
FORWARD . . . . .	7
FORWARD.COND . . . . .	7
NOFORWARD. . . . .	7

## **Appendix. Notices . . . . . 9**

Programming interface information . . . . .	10
Trademarks . . . . .	11
Terms and conditions . . . . .	11



---

## RouteD

The Route Daemon (RouteD) provides support for the Routing Information Protocol (RIP) on the System i<sup>™</sup> platform.

RIP is the most widely used routing protocol today. It is an Interior Gateway Protocol (IGP) that assists TCP/IP in routing IP data packets within an autonomous domain. With dynamic routing protocols, you can handle networks with multiple routers or switch automatically to redundant routes.

---

### PDF file for RouteD

You can view and print a PDF file of this information.


To view or download the PDF version of this document, select RouteD (about 166 KB).

### Saving PDF files

To save a PDF on your workstation for viewing or printing:

1. Right-click the PDF link in your browser.
2. Click the option that saves the PDF locally.
3. Navigate to the directory in which you want to save the PDF.
4. Click **Save**.

### Downloading Adobe Reader

You need Adobe<sup>®</sup> Reader installed on your system to view or print these PDFs. You can download a free copy from the Adobe Web site ([www.adobe.com/products/acrobat/readstep.html](http://www.adobe.com/products/acrobat/readstep.html)) .

---

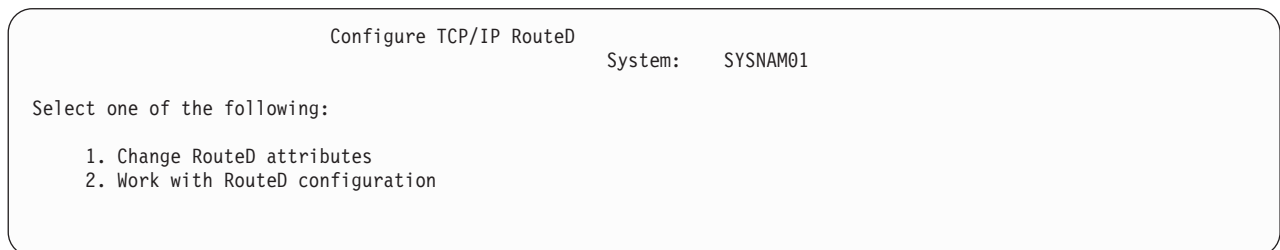
## RouteD configuration commands

To configure a new RouteD server on your system, use the RouteD configuration commands.

Use the Configure TCP/IP RouteD (CFGTCPRTD) command to configure the RouteD server. You can access this command prompt from the following ways:

- Specify the CFGTCPRTD (Configure TCP/IP RouteD) command from the command line.
- Specify the CFGTCPAPP (Configure TCP/IP Applications) command from the command line and select option 2 (Configure RouteD).

After you specify the command, you see the following display:



```
Configure TCP/IP RouteD
System:  SYSNAM01

Select one of the following:

  1. Change RouteD attributes
  2. Work with RouteD configuration
```

*Figure 1. Configure TCP/IP RouteD*

The following commands control the RouteD server:

- The Change RouteD Attributes (CHGRTDA) command allows an administrator to set the configurable attributes for the RouteD server.
- The Work with RouteD Configuration (WRKRTDCFG) command allows an administrator to work with the RouteD configuration.

---

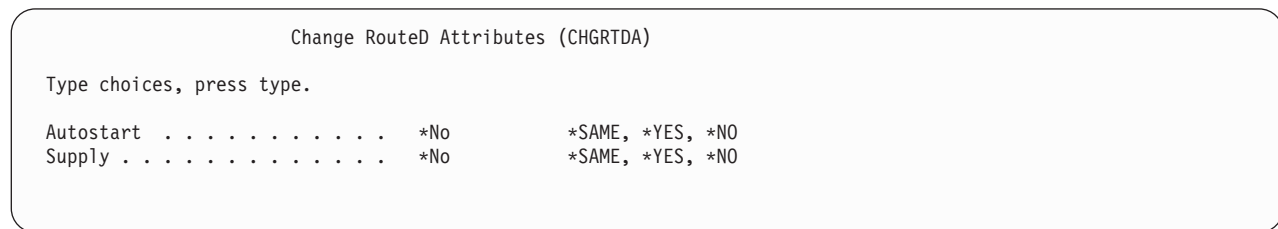
## RouteD attribute commands

You can change the configuration attributes of your RouteD server by using the Change RouteD Attributes (CHGRTDA) command.

Use the following ways to access this command prompt:

- Specify the CHGRTDA (Change RouteD Attributes) command from the command line.
- Select option **1** on the Configure TCP/IP RouteD (CFGTCPRTD) display.

**Note:** You must have \*IOSYSCFG special authority to change the RouteD attributes by using the CHGRTDA command.



The screenshot shows a command prompt window titled "Change RouteD Attributes (CHGRTDA)". Below the title, it says "Type choices, press type." followed by two lines of options. The first line is "Autostart . . . . . \*No \*SAME, \*YES, \*NO" and the second line is "Supply . . . . . \*No \*SAME, \*YES, \*NO".

```
Change RouteD Attributes (CHGRTDA)

Type choices, press type.

Autostart . . . . . *No      *SAME, *YES, *NO
Supply . . . . . *No      *SAME, *YES, *NO
```

Figure 2. Change RouteD Attributes (CHGRTDA) command

---

## Work with RouteD Configuration command

To change the RouteD configuration, use the Work with RouteD Configuration (WRKRTDCFG) command.

To access this command prompt, use the following methods:

- Specify WRKRTDCFG from the command line.
- Select option **2** on the Configure TCP/IP RouteD (CFGTCPRTD) display.

**Note:** You must have \*IOSYSCFG special authority to change the RouteD configuration by using the WRKRTDCFG command.



```

Work with RouteD Configuration
System:  SYSNAM01
Type options, press Enter.
  1=Add  2=Change  3=Copy  4=Remove  5=Display  13=Insert

Sequence
Opt  Number  Entry
-----
00010 # * * * * * >
00020 # RTD DEFAULT CONFIGURATION >
00030 # * * * * * >
00040 # >
00050 # RouteD Interface Definitions
00060 # -----
00070 # TCP/IP will learn about a route to network 9.0.0.0 th >
00080 # means external to RouteD, therefore do not allow Rout >
00090 # route to this network.
00100 #
00110 # RIP_INTERFACE * SUPPLY RIP1 METRIC 1 BLOCK 9.0.0.0 MA >
00120 #
00130 #
More...
F3=Exit  F5=Refresh  F6=Print List  F12=Cancel  F17=Top  F18=Bottom

```

Figure 3. Work with RouteD Configuration command

## Scenario: RouteD configuration

This scenario shows how RouteD configuration entries work in a sample network.

The routers know every route within every network, including networks X, Y, Z, A, and W.

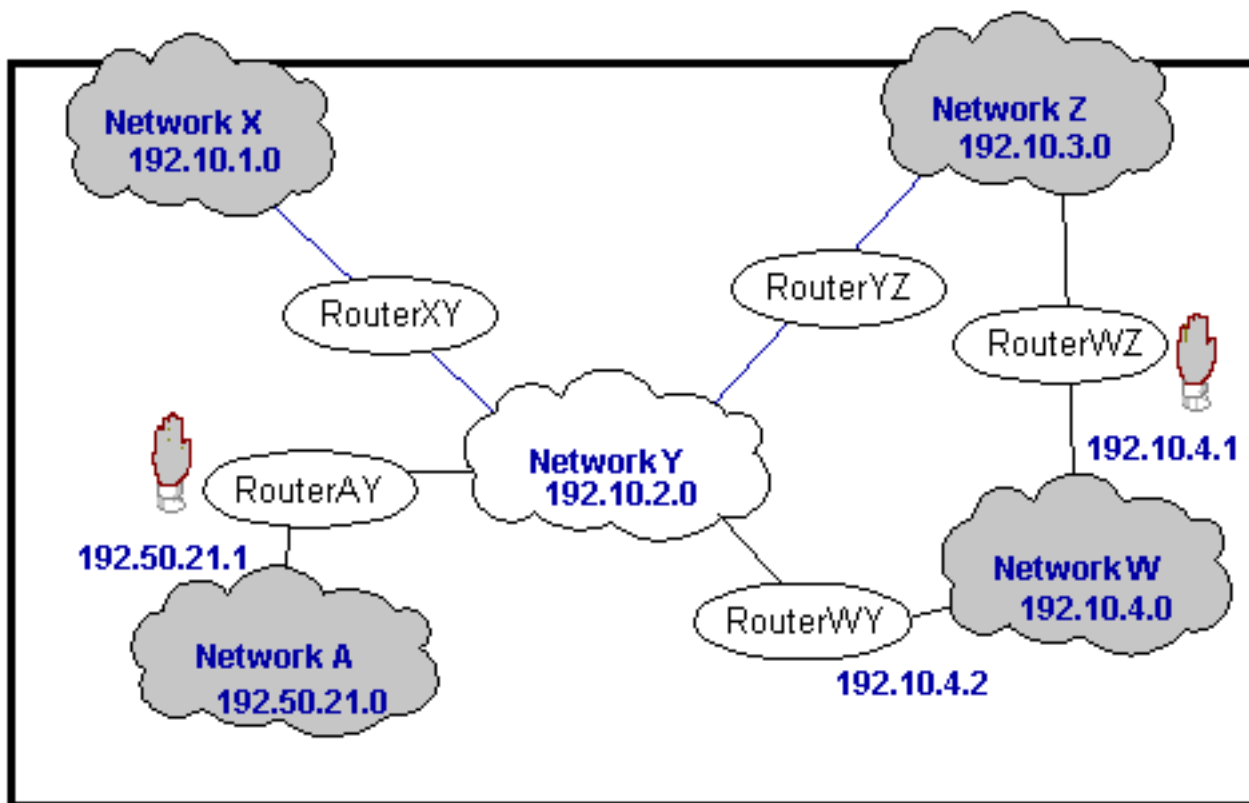


Figure 4. RouteD configuration scenario

- Case 1: If router AY has an interface of 192.10.2.1, a metric of 1, and a NOFORWARD parameter of 192.50.21.0, then none of the hosts in the networks reach network A.
- Case 2: If router WZ has an interface of 192.10.3.1, a metric of 1, and a NOFORWARD parameter of 192.10.4.0, then none of the IP packets go through router WZ to get to network W. IP packets can still reach network W because router WY provides a route to that network.

**Note:** If you set the parameter option of any interface to Passive, then no routing takes place across the interface.

## RIP\_INTERFACE statement

You can use the RIP\_INTERFACE statement to define routes and create static routes for each interface.

You can specify multiple interface options on a single entry in the configuration file. You can use the following options:

- BLOCK
- FORWARD
- FORWARD.COND
- NOFORWARD

You can specify interfaces on the system by using the following methods:

### Network

A network that is specified as an IP address and a mask or as an IP address and a bit number. The bit number *n* indicates which bit in the 0 – 32 bits of the IP address (counting left to right beginning from 0) is the last bit of the network portion of the IP address. If the mask and bit number are

missing, the system calculates a network by using the subnet mask of the interface specified through the Add TCP/IP Interface (ADDTCPIFC) command.

#### **Interface name**

The logical interface name that identifies a Point-to-Point Protocol (PPP) interface with an IP address that is assigned dynamically when the PPP connection becomes active.

#### **Hostname**

The fully qualified host name of the system, which is resolvable through the Domain Name System (DNS).

- \* This character refers to all of the interfaces on the system and is useful for setting default values that apply to all interfaces. You can override these defaults by providing a RIP\_INTERFACE statement for a specific interface with different values for selected parameters.

## **Supply values**

To specify how Router Information Protocol (RIP) traffic is handled within your network, use RIP\_INTERFACE supply values.

Use the following options for RIP\_INTERFACE supply values:

#### **PASSIVE**

The system does not receive or generate any RIP traffic on the specified interface.

#### **SUPPLY RIP1**

This value indicates which version of the RIP protocol the system uses to send and receive routing information to and from neighboring routers. For SUPPLY RIP1, the system processes only RIPv1 packets.

#### **SUPPLY RIP2**

This value indicates which version of the RIP protocol the system uses to send and receive routing information to and from neighboring routers. For SUPPLY RIP2, the system uses the multicast address 224.0.0.9 to process only RIPv2 packets, as specified in the RFC1723 sect.3.5.

#### **SUPPLY OFF**

This value indicates that the system receives both RIPv1 and RIPv2 on the specified interface. However, the system does not send RIP packets.

**Note:** The default supply value for interfaces that you do not specify is SUPPLY RIP1. The system does not support RIP Version 1 Compatibility mode.

## **DIST\_ROUTES\_IN**

The DIST\_ROUTES\_IN parameter controls how RouteD redistributes routes that it receives from this RIP\_INTERFACE network to wide area networks (WANs). This parameter does not affect redistribution of routes to local area networks (LANs).

Use the following values for the DIST\_ROUTES\_IN parameter:

#### **\*CALC**

RouteD determines a value of FULL or LIMITED by whether the RIP\_INTERFACE network is a LAN or a WAN. If the specified interface is broadcast-capable, it is assumed local, and a value of FULL is given. Otherwise, the system uses a value of LIMITED.

#### **FULL**

This value indicates that RouteD redistributes routes that it receives from the specified interface to all of the other interfaces that use normal RIP algorithm. Specify this value only for local networks.

## LIMITED

This value indicates that the system does not redistribute routes that it receives from the RIP\_INTERFACE network to other LIMITED interfaces. Specify this value only for certain types of WAN. You cannot set this value for a LAN.

## Metric

To specify the metric that the system uses to add routes that it receives through a specified interface, use the Metric parameter. Possible values are 1 through 15.

## Community

You can specify the community name that is used by the specified interface for authentication.

The Community option is valid for interfaces with a SUPPLY value of RIP2. The *rip\_community\_name* is a character string of 1 to 16 characters in length.

**Note:** The Community option is defined in RFC 1723, Section 3.1.

If you specify the Community option, the system indicates that this interface needs authentication. The Community name that is specified with the Community option must match the community name sent in all RIP2 message blocks for this interface. If you do not specify the Community option, the system does not indicate any authentication for this interface.

### Related information



RFC Editor Homepage

## Additional parameters

You can use these additional RIP\_INTERFACE parameters in your network, such as BLOCK and FORWARD.

### BLOCK

The BLOCK parameter prevents the network route received on the specified interface from being included in the RouteD routes table.

Consequently, the network is unknown and not forwarded to any other routers. Specify networks that you want to block by one of the following methods:

#### Network

A network that is specified as an IP address and a mask or as an IP address and a bit number. The bit number *n* indicates which bit in the 0 – 32 bits of the IP address (counting left to right beginning from 0) is the last bit of the network portion of the IP address. If the MASK and bit number are missing, a mask of 255.255.255.255 is used.

### PRIVATE

The PRIVATE keyword refers to the sets of IP addresses that are designated for use by the Internet Assigned Number Authority (IANA) only within the private Internet. For more information, see RFC 1918, section 3.

- 10.0.0.0 to 10.255.255.255 (10/8 prefix) – 1 class A network.
- 172.16.0.0 to 172.31.255.255 (172.16/12 prefix) – 16 contiguous class B networks.
- 192.168.0.0 to 192.168.255.255 (192.168/16 prefix) – 256 contiguous class C networks.

When the RouteD server tries to send a route, it processes multiple forward parameters in the supplied order. The first forward parameter that allows the system to send the route over the specified interface ends the processing. The default is to forward.

## FORWARD

You can use the FORWARD parameter to forward the specified network route exclusively over a specified interface.

If the specified interface is inactive, RouteD takes no special action to forward this network.

Specify a network as both an IP address and a mask, or as both an IP address and a bit number. The bit number *n* indicates which bit in the 0 – 32 bits of the IP address (counting left to right beginning from 0) is the last bit of the network portion of the IP address. If the MASK and bit number are missing, a mask of 255.255.255.255 is used.

## FORWARD.COND

You can use the FORWARD.COND parameter to forward the specified network route exclusively over a specified interface.

If the specified interface is inactive, RouteD forwards the network over all of the other interfaces.

Specify a network as both an IP address and a mask or as both an IP address and a bit number. The bit number *n* indicates which bit in the 0 – 32 bits of the IP address (counting left to right beginning from 0) is the last bit of the network portion of the IP address. If the MASK and bit number are missing, a mask of 255.255.255.255 is used.

## NOFORWARD

When you use the NOFORWARD parameter, the system does not send out Router Information Protocol (RIP) information about the specified network to the specified interface.

Specify networks in one of the following methods:

### Network

Specify a network as both an IP address and a mask, or as both an IP address and a bit number. The bit number *n* indicates which bit in the 0 – 32 bits of the IP address (counting left to right beginning from 0) is the last bit of the network portion of the IP address. If the MASK and bit number are missing, a mask of 255.255.255.255 is used.

### PRIVATE

The PRIVATE keyword refers to the sets of IP addresses that are designated for use by the IANA within the private Internet. For more information, see RFC 1918, section 3.

- 10.0.0.0 to 10.255.255.255 (10/8 prefix) – 1 class A network.
- 172.16.0.0 to 172.31.255.255 (172.16/12 prefix) – 16 contiguous class B networks.
- 192.168.0.0 to 192.168.255.255 (192.168/16 prefix) – 256 contiguous class C networks.



---

## Appendix. Notices

This information was developed for products and services offered in the U.S.A.

IBM may not offer the products, services, or features discussed in this document in other countries. Consult your local IBM representative for information on the products and services currently available in your area. Any reference to an IBM product, program, or service is not intended to state or imply that only that IBM product, program, or service may be used. Any functionally equivalent product, program, or service that does not infringe any IBM intellectual property right may be used instead. However, it is the user's responsibility to evaluate and verify the operation of any non-IBM product, program, or service.

IBM may have patents or pending patent applications covering subject matter described in this document. The furnishing of this document does not grant you any license to these patents. You can send license inquiries, in writing, to:

IBM Director of Licensing  
IBM Corporation  
North Castle Drive  
Armonk, NY 10504-1785  
U.S.A.

For license inquiries regarding double-byte (DBCS) information, contact the IBM Intellectual Property Department in your country or send inquiries, in writing, to:

IBM World Trade Asia Corporation  
Licensing  
2-31 Roppongi 3-chome, Minato-ku  
Tokyo 106, Japan

**The following paragraph does not apply to the United Kingdom or any other country where such provisions are inconsistent with local law:** INTERNATIONAL BUSINESS MACHINES CORPORATION PROVIDES THIS PUBLICATION "AS IS" WITHOUT WARRANTY OF ANY KIND, EITHER EXPRESS OR IMPLIED, INCLUDING, BUT NOT LIMITED TO, THE IMPLIED WARRANTIES OF NON-INFRINGEMENT, MERCHANTABILITY OR FITNESS FOR A PARTICULAR PURPOSE. Some states do not allow disclaimer of express or implied warranties in certain transactions, therefore, this statement may not apply to you.

This information could include technical inaccuracies or typographical errors. Changes are periodically made to the information herein; these changes will be incorporated in new editions of the publication. IBM may make improvements and/or changes in the product(s) and/or the program(s) described in this publication at any time without notice.

Any references in this information to non-IBM Web sites are provided for convenience only and do not in any manner serve as an endorsement of those Web sites. The materials at those Web sites are not part of the materials for this IBM product and use of those Web sites is at your own risk.

IBM may use or distribute any of the information you supply in any way it believes appropriate without incurring any obligation to you.

Licensees of this program who wish to have information about it for the purpose of enabling: (i) the exchange of information between independently created programs and other programs (including this one) and (ii) the mutual use of the information which has been exchanged, should contact:

IBM Corporation

Software Interoperability Coordinator, Department YBWA  
3605 Highway 52 N  
Rochester, MN 55901  
U.S.A.

Such information may be available, subject to appropriate terms and conditions, including in some cases, payment of a fee.

The licensed program described in this document and all licensed material available for it are provided by IBM under terms of the IBM Customer Agreement, IBM International Program License Agreement, IBM License Agreement for Machine Code, or any equivalent agreement between us.

Any performance data contained herein was determined in a controlled environment. Therefore, the results obtained in other operating environments may vary significantly. Some measurements may have been made on development-level systems and there is no guarantee that these measurements will be the same on generally available systems. Furthermore, some measurements may have been estimated through extrapolation. Actual results may vary. Users of this document should verify the applicable data for their specific environment.

Information concerning non-IBM products was obtained from the suppliers of those products, their published announcements or other publicly available sources. IBM has not tested those products and cannot confirm the accuracy of performance, compatibility or any other claims related to non-IBM products. Questions on the capabilities of non-IBM products should be addressed to the suppliers of those products.

All statements regarding IBM's future direction or intent are subject to change or withdrawal without notice, and represent goals and objectives only.

This information contains examples of data and reports used in daily business operations. To illustrate them as completely as possible, the examples include the names of individuals, companies, brands, and products. All of these names are fictitious and any similarity to the names and addresses used by an actual business enterprise is entirely coincidental.

#### COPYRIGHT LICENSE:

This information contains sample application programs in source language, which illustrate programming techniques on various operating platforms. You may copy, modify, and distribute these sample programs in any form without payment to IBM, for the purposes of developing, using, marketing or distributing application programs conforming to the application programming interface for the operating platform for which the sample programs are written. These examples have not been thoroughly tested under all conditions. IBM, therefore, cannot guarantee or imply reliability, serviceability, or function of these programs.

Each copy or any portion of these sample programs or any derivative work, must include a copyright notice as follows:

© (your company name) (year). Portions of this code are derived from IBM Corp. Sample Programs. © Copyright IBM Corp. \_enter the year or years\_. All rights reserved.

If you are viewing this information softcopy, the photographs and color illustrations may not appear.

---

## Programming interface information

This RouteD publication documents intended Programming Interfaces that allow the customer to write programs to obtain the services of IBM i5/OS.



---

## Trademarks

The following terms are trademarks of International Business Machines Corporation in the United States, other countries, or both:

IBM  
IBM(logo)  
System i

Adobe, the Adobe logo, PostScript, and the PostScript logo are either registered trademarks or trademarks of Adobe Systems Incorporated in the United States, and/or other countries.

Other company, product, and service names may be trademarks or service marks of others.

---

## Terms and conditions

Permissions for the use of these publications is granted subject to the following terms and conditions.

**Personal Use:** You may reproduce these publications for your personal, noncommercial use provided that all proprietary notices are preserved. You may not distribute, display or make derivative works of these publications, or any portion thereof, without the express consent of IBM.

**Commercial Use:** You may reproduce, distribute and display these publications solely within your enterprise provided that all proprietary notices are preserved. You may not make derivative works of these publications, or reproduce, distribute or display these publications or any portion thereof outside your enterprise, without the express consent of IBM.

Except as expressly granted in this permission, no other permissions, licenses or rights are granted, either express or implied, to the publications or any information, data, software or other intellectual property contained therein.

IBM reserves the right to withdraw the permissions granted herein whenever, in its discretion, the use of the publications is detrimental to its interest or, as determined by IBM, the above instructions are not being properly followed.

You may not download, export or re-export this information except in full compliance with all applicable laws and regulations, including all United States export laws and regulations.

IBM MAKES NO GUARANTEE ABOUT THE CONTENT OF THESE PUBLICATIONS. THE PUBLICATIONS ARE PROVIDED "AS-IS" AND WITHOUT WARRANTY OF ANY KIND, EITHER EXPRESSED OR IMPLIED, INCLUDING BUT NOT LIMITED TO IMPLIED WARRANTIES OF MERCHANTABILITY, NON-INFRINGEMENT, AND FITNESS FOR A PARTICULAR PURPOSE.







Printed in USA