



System i  
e-business and Web serving  
IBM Welcome Page V1.1

*Version 6 Release 1*







System i  
e-business and Web serving  
IBM Welcome Page V1.1

*Version 6 Release 1*

**Note**

Before using this information and the product it supports, read the information in “Notices,” on page 35.

This edition applies to version 6, release 1, modification 0 of IBM Business Solutions (product number 5722-BZ1) and to all subsequent releases and modifications until otherwise indicated in new editions. This version does not run on all reduced instruction set computer (RISC) models nor does it run on CISC models.

© Copyright International Business Machines Corporation 2004, 2008. All rights reserved.

US Government Users Restricted Rights – Use, duplication or disclosure restricted by GSA ADP Schedule Contract with IBM Corp.

---

## Contents

<b>IBM Welcome Page V1.1. . . . .</b>	<b>1</b>
PDF file for IBM Welcome Page V1.1 . . . . .	1
Overview of IBM Welcome Page V1.1 . . . . .	1
Interaction with WebSphere Application Server . . .	3
Interaction with HTTP Server for i5/OS . . . . .	3
Interaction with IBM Tivoli Directory Server for i5/OS (LDAP) . . . . .	4
Interaction with LDAP on Domino 6.0 for iSeries .	5
Interaction with a Lotus Sametime server. . . . .	5
Interaction with an Enterprise Identity Mapping server. . . . .	6
Install IBM Business Solutions . . . . .	7
Verify the prerequisites . . . . .	7
Install the applications . . . . .	9
Configure and deploy the applications. . . . .	9
Verify installation and setup. . . . .	16
Administer IBM Welcome Page V1.1 . . . . .	18
Manage server properties. . . . .	20

Manage user entry properties . . . . .	20
Manage group entry properties. . . . .	21
Manage administrator properties . . . . .	21
Manage client certificates . . . . .	22
Manage CA certificates . . . . .	22
Manage EIM server properties . . . . .	23
Manage EIM domain properties . . . . .	26
Manage Sametime server properties . . . . .	29
Manage STLinks properties . . . . .	29
Use IBM Welcome Page V1.1 . . . . .	30
Troubleshoot IBM Welcome Page V1.1 . . . . .	30

## **Appendix. Notices . . . . . 35**

Programming interface information . . . . .	36
Trademarks . . . . .	37
Terms and conditions . . . . .	37



---

## IBM Welcome Page V1.1

IBM® Welcome Page Version 1.1 is a Web-based business application with several purposes.

It provides a starting point for non-administrators, possibly you and your colleagues, to access links to other business applications provided by IBM Business Solutions Version 1.0, a simple welcome page specifically for business applications. It also provides administrative interfaces used for setup and configuration of other business applications, including IBM Telephone Directory V5.2 and IBM Survey Creator V1.0.

### Related concepts

IBM Telephone Directory V5.2

IBM Survey Creator V1.0

---

## PDF file for IBM Welcome Page V1.1

You can view and print a PDF file of this information.

To view or download the PDF version of this document, select IBM Welcome Page V1.1 (about 376 KB).

You can view or download these related topic PDFs:


- IBM Telephone Directory V5.2 (495 KB)
- IBM Survey Creator V1.0 (316 KB)

## Saving PDF files

To save a PDF on your workstation for viewing or printing:

1. Right-click the PDF link in your browser.
2. Click the option that saves the PDF locally.
3. Navigate to the directory in which you want to save the PDF.
4. Click **Save**.

## Downloading Adobe® Reader

You need Adobe Reader installed on your system to view or print these PDFs. You can download a free copy from the Adobe Web site ([www.adobe.com/products/acrobat/readstep.html](http://www.adobe.com/products/acrobat/readstep.html)) .

---

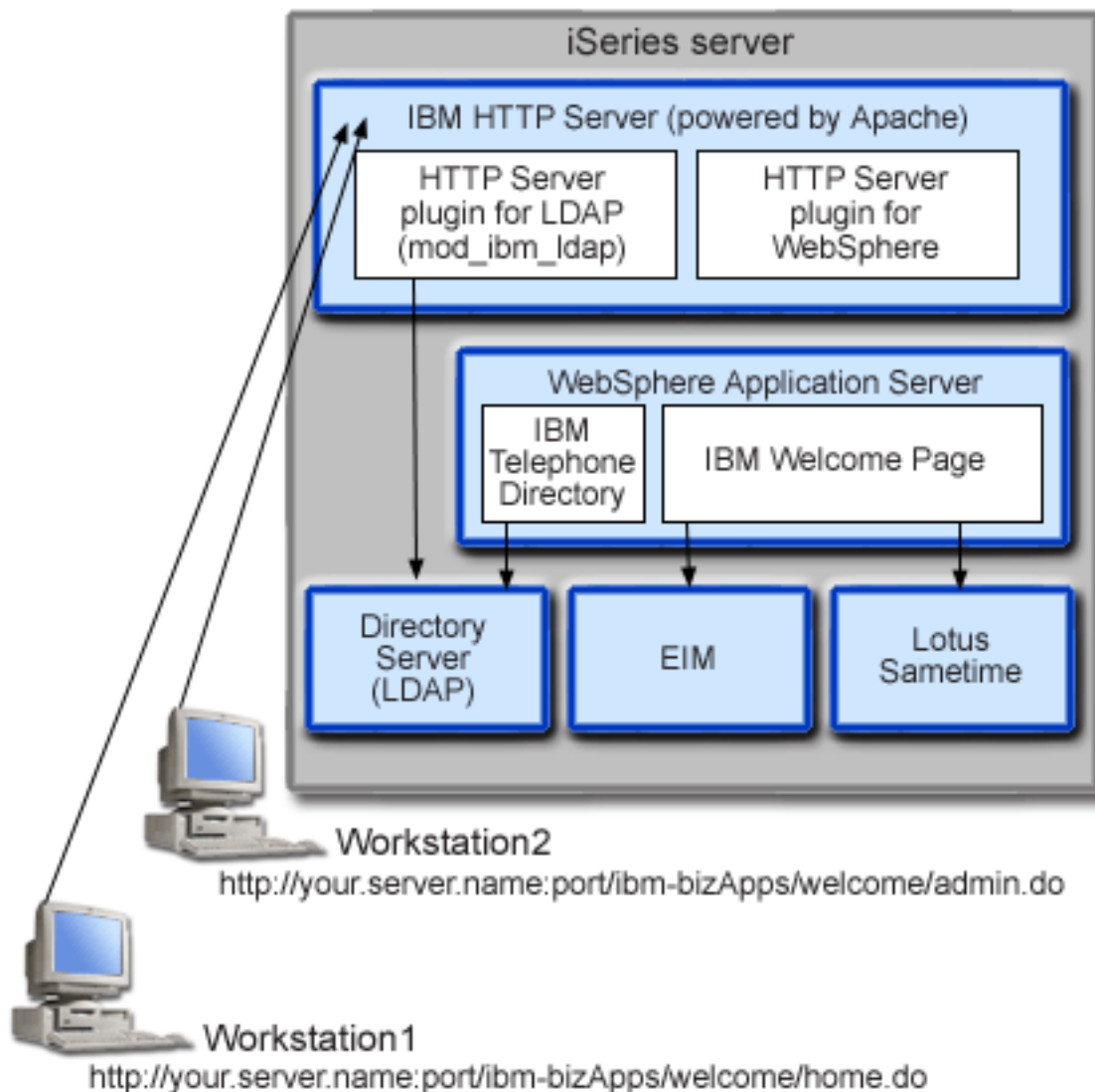
## Overview of IBM Welcome Page V1.1

Provides an overview of the IBM Welcome Page V1.1 application and how it interacts with different iSeries™ server components and various software components.

IBM Welcome Page V1.1 is a Web-based business application with several purposes. It provides a starting point for non-administrators, possibly you and your colleagues, to access links to other business applications provided by IBM Business Solutions - a simple welcome page specifically for business applications. It also provides administrative interfaces used for set up and configuration of other business applications, including IBM Telephone Directory V5.2 and IBM Survey Creator V1.0.

Two types of directory servers are supported by the IBM Welcome Page V1.1 application: IBM Tivoli® Directory Server for i5/OS®(LDAP), and LDAP on Domino® 6.0 for iSeries (Domino Directory services).

An overview of the application is as follows:



The IBM Welcome Page V1.1 application is installed on your iSeries server when you install IBM Telephone Directory V5.2 and IBM Survey Creator V1.0. It can be deployed into the runtime of the following editions of WebSphere® Application Server for i5/OS:

- WebSphere Application Server for i5/OS V6 (Base)
- WebSphere Application Server for i5/OS V6.1 (Base)
- WebSphere Application Server for i5/OS V6 (ND)
- WebSphere Application Server for i5/OS V6.1 (ND)
- WebSphere Application Server - Express for i5/OS V6
- WebSphere Application Server - Express for i5/OS V6.1

The Web Administration GUI (part of the HTTP server administration GUI) performs many underlying configuration tasks for you if you deploy into the WebSphere Application Server for i5/OS (Base) or WebSphere Application Server - Express for i5/OS run time.

For detailed information about how the IBM Welcome Page V1.1 application uses various iSeries server and software components, see the following topics:



## Interaction with WebSphere Application Server


IBM Welcome Page V1.1 contains a Web application packaged in an Enterprise Archive (.ear) file that is deployed into a WebSphere Application Server run time environment when the IBM Telephone Directory V5.2 application is deployed.

Once the IBM Welcome Page V1.1 application is deployed, it handles requests routed to it through the application server. The application server can provide various access paths and have various security features enabled for the server as a whole or specifically for the application. Requests must pass through the server to be routed to and handled by the IBM Welcome Page V1.1 application. Once requests reach the application, the application handles the required LDAP interactions, and, optionally, configured Enterprise Identity Mapping (EIM) or Sametime® operations.

The application is written and packaged to Java™ standards. WebSphere Application Server for iSeries provides the runtime environment for the application, which includes support for Java runtime APIs. The following describes what the application uses:

- In WebSphere Application Server V5, standard Java runtime environment APIs (J2SE version 1.3) are provided. J2SE 1.3 provides basic Java utility functions, context, and socket factories used to communicate with LDAP servers, and Java locale support for internationalization.
- In WebSphere Application Server V5.1 and V6, standard Java runtime environment APIs (J2SE version 1.4) are provided. J2SE 1.4 provides basic Java utility functions, context, and socket factories used to communicate with LDAP servers, and Java locale support for internationalization.
- Enterprise application runtime environment APIs (J2EE version 1.3), which provide Web application support for HTTP servlets (HTTP Servlet Specification Level 2.3) and Java Server Pages (JSP Specification Level 1.2).
- Web application deployment utilities (J2EE version 1.3), which provide deployment of the application using Enterprise Archive (.ear) files, Web Archive (.war) files, and Java Archive (.jar) files.

See the following Web site for more details on the application deployment environment and Web application packaging tools and services:

WebSphere Application Server  (<http://www.ibm.com/servers/eserver/series/software/WebSphere/wsappserver>).

## Interaction with HTTP Server for i5/OS

IBM Welcome Page V1.1 requires the following production-level HTTP server: IBM HTTP Server for i5/OS (powered by Apache 2.2, 5761-DG1).

IBM Welcome Page V1.1 provides the ability to set up and manage the configuration needed for an Apache 2.2 HTTP server in support of itself, as well as the IBM Telephone Directory V5.2 application. The application sets up a separate configuration file that contains the required directives for an Apache 2.2 HTTP server. Once complete, the Apache 2.2 HTTP server must be reconfigured to include the additional directives.

The location of the Apache 2.2 configuration file varies depending on the name of your WebSphere Application Server and what edition is used. The following is an example of the location of the configuration files set up by the IBM Welcome Page V1.1 application when it is deployed:

`/QIBM/UserData/WebASE/ASE5/yourserver/ibs/yourserver/apache20.inc`

where *yourserver* is the name of your WebSphere Application Server - Express for i5/OS V6 server. Once the IBM Welcome Page V1.1 application creates the Apache 2.2 configuration file listed above, the HTTP server must be reconfigured to include the new directives. The following is an example of the directives that are required:

1. `LoadModule ibm_ldap_module /QSYS.LIB/QHTTPSVR.LIB/QZSRVLDAP.SRVPGM`

2. Include /QIBM/UserData/WebASE/ASE5/ *yourserver*/ibs/ *yourserver*/apache20.inc  
where *yourserver* is the name of your WebSphere Application Server - Express for i5/OS V6 server.


The server must be configured to allow the application to benefit from additional functionality provided by the HTTP server.

Once the configuration is set up and the HTTP server is restarted, the plug-in module for LDAP is used to authenticate users that route requests to the IBM Telephone Directory V5.2 application. These include requests to create, update, and delete entries in the directory, requests to the IBM Telephone Directory V5.2 application administrative interfaces, and requests to manage identity mappings for Enterprise Identity Mapping (EIM), if configured.

After users are authenticated, their credentials (IDs and passwords) are allowed to pass with the requests routed to the application through the HTTP server plug-in for WebSphere and can be used by the application as necessary. Requests that do not require authentication are routed to the application (through the plug-in) without credentials.

Other features of the HTTP server can be used to support and protect access to the application. For example, the HTTP server can be configured to require the use of Secure Sockets Layer (SSL) ports to ensure information is sent confidentially. It can be configured to log user activity or to prevent certain users (or systems) from accessing the application.

See the HTTP Server for i5/OS Web page for more details on setting up HTTP servers:

IBM HTTP Server for i5/OS home page  (<http://www.ibm.com/servers/eserver/series/software/http>).


See Administer IBM Welcome Page V1.1 for additional information about the entries used to create the apache20.inc file, including name, port, location of users and groups, naming, object classes, and administrator names and groups.

## Interaction with IBM Tivoli Directory Server for i5/OS (LDAP)

An LDAP directory is a listing of information about objects arranged in a particular order that gives details about each object.

One special characteristic of directories is that they are accessed (read or searched) much more often than they are updated (written). Hundreds of people might look up an individual's telephone number, but the telephone number rarely changes.

For more information about iSeries Directory Server (LDAP), see the following topics:

- IBM Tivoli Directory Server for i5/OS (LDAP)
- IBM Tivoli Directory Server for i5/OS (LDAP)  (<http://www.ibm.com/servers/eserver/series/ldap>). The **Publications** section has links to topics, Redbooks®, and other related LDAP books.

## LDAP configuration

When you configure the LDAP server, you must specify the suffixes you want to be provided on the LDAP server. For example, the suffix dc=myhost,dc=mycompany,dc=com is the default suffix that is set up when the LDAP server is automatically configured for the server that has the TCP/IP host name of myhost.mycompany.com. Objects in a directory are referenced by a distinguished name (DN) attribute. You must specify a path (parent DN) where you want your IBM Telephone Directory information to exist. The default parent DN that is used is cn=users prepended to the TCP/IP host name. For example: cn=users,dc=myhost,dc=mycompany,dc=com.

Certain applications use IBM Welcome Page V1.1 for configuration. For example, the LDAP server is configured for use with the IBM Telephone Directory V5.2 but set up in the IBM Welcome Page V1.1 application during installation. When the application is installed, it uses the default value `cn=users` and prepends it to the host name. You can override the default value by specifying which parent DN value you want to use during installation. IBM Telephone Directory information can reside in an existing location where organizational information is already kept. It also can exist in a new location. For example, if you have an existing organization `o=company` that has existing `inetOrgPerson` entries, you can configure IBM Telephone Directory to use this parent DN, and it will access your existing information. The `inetOrgPerson` object class is an industry standard class that is commonly used to represent and store information about people, such as first and family name, telephone numbers, and e-mail addresses. Installation of the application also creates additional entries in the parent DN for IBM Telephone Directory to use. The entries created are:

- **cn=Administrators**

This is a group that has authority to create, update, search, and delete entries in the directory."

- **cn=Administrator**

This is a user that is a member of the `cn=Administrators` group and has authority to create, update, search, and delete entries in the directory. The user name you specify when authenticating in the application is `Administrator` and the password is the password specified during installation.

- **cn=itdCreateAdministrator**


This user is created when open enrollment is specified during installation. It allows users to only be added to the application and is used when registering users in the application for open enrollment.

## Interaction with LDAP on Domino 6.0 for iSeries

As an alternative to iSeries Directory Server (LDAP), you can use LDAP on Domino 6.0 for iSeries (Domino Directory services).

Domino LDAP uses the `inetOrgPerson` object class, which is an industry standard class that is commonly used to represent and store information about people, such as first and family name, telephone numbers, and e-mail addresses. This requirement is the same one imposed on LDAP servers provided by iSeries Directory Server (LDAP). Also, directory entries modified by the application have an `ibm-itdPerson` auxiliary object class added to them. For details on the `inetOrgPerson` class, see *Interaction with iSeries Directory Server (LDAP)*.

The application interacts with a Domino LDAP server the same way it interacts with an iSeries LDAP server. However, directory entries are set up and maintained differently using a Domino LDAP server. The difference involves Domino's use of the `dominoPerson` object class. In order for entries to be visible by all versions of Domino, entries must include the `dominoPerson` object class. Otherwise Domino ignores them. The IBM Welcome Page V1.1 application must be configured specifically to use a Domino LDAP server.

For detailed information about how to set up and use LDAP servers on Domino 6.0, see the Lotus® Domino on i5/OS Web site: IBM Lotus Domino on i5/OS Home Page (<http://www.ibm.com/servers/eserver/iseries/domino>). 

## Interaction with a Lotus Sametime server

Lotus Sametime is real-time collaboration software -- with online awareness, instant message handling system, application sharing and virtual meetings.

Sametime consists of client and server applications that enable a community of users to collaborate in real-time online meetings over an intranet or the Internet. Members of the Sametime community use collaborative activities such as presence, chat, screen sharing, a shared whiteboard, and real-time audio/video capabilities to meet, converse, and work together in instant or scheduled meetings.

Sametime "presence" technology enables members who have logged in to the Sametime server to see all other members who are online (logged in). The names of online users display in presence lists (also known as buddy lists) in Sametime applications. From these presence lists, members of the community can converse through instant message handling sessions or start instant meetings that include chat, screen-sharing, whiteboard, question and answer polls, the ability to send Web pages, and audio/video collaborative activities.

To allow the IBM Welcome Page V1.1 application and the IBM Telephone Directory V5.2 application to integrate Sametime functions, it uses the Sametime Links optional toolkit for Lotus Sametime. The Sametime Links toolkit is used for enabling Web applications and with Sametime awareness and instant message handling using an HTML or JavaScript™ API.

**Note:** The IBM Welcome Page V1.1 application is used to configure the location of the online Sametime Links (STLinks) package, such as server name and URL, in the user's environment. When configured, the Sametime chat links and Sametime presence list support (also known as buddy lists) features can be enabled. These features use the Sametime Links toolkit APIs on HTML screens in the IBM Telephone Directory V5.2 application.

When a user logs in to search for directory entries, results are returned on HTML pages. The pages display information obtained from the directory for each matching entry. Results always contain the name of each entry and may also contain e-mail addresses, telephone numbers, and a list of job responsibilities. When Sametime chat links are enabled, results also include awareness icons for each entry (provided by the Sametime Links toolkit). Awareness icons are used to indicate whether the other users are online (logged into Sametime). If they are logged in, users can click the awareness icons to initiate chat sessions with other users using Sametime technology.

Another feature of IBM Welcome Page V1.1 is the Sametime presence list support (also known as a buddy list). The IBM Welcome Page V1.1 application is used to configure Sametime buddy list support. When configured, an Add to Buddy List icon is displayed in the navigation bar of the IBM Telephone Directory V5.2 application. When this icon is clicked, the directory entry that is displayed is added to the user's Sametime buddy list. IBM Telephone Directory V5.2 provides the ability to add listings to a buddy list. Sametime client software, or other Sametime software, must be used in order to use and manage the buddy list.

Interaction with the Sametime server for chat sessions and buddy list support is handled by the Sametime Links toolkit APIs that runs in the client browser. IBM Welcome Page V1.1 does not provide the toolkit, rather, it adds what is needed on the HTML pages for the toolkit package to be downloaded from the Sametime server.

See Administer IBM Welcome Page V1.1 for more information about how to set up and use Sametime integration in the business applications:

See the following Web sites for more information about Sametime technology and the optional Sametime Links toolkit (**Note:** Lotus Sametime is also known as Lotus Instant Messaging and Web Conferencing and the Sametime Toolkit is also known as the Instant Messaging and Web Conferencing Toolkit):

Lotus Sametime Documentation 

## Interaction with an Enterprise Identity Mapping server

Enterprise Identity Mapping (EIM) for iSeries allows administrators and application developers to solve the problem of managing multiple user registries across their enterprise.

Most network enterprises face the problem of multiple user registries, which require each person or entity within the enterprise to have a user identity in each registry. The need for multiple user registries quickly

grows into a large administrative problem that affects users, administrators, and application developers. Enterprise Identity Mapping (EIM) enables inexpensive solutions for easier management of multiple user registries and user identities in your enterprise.

EIM allows you to create a system of identity mappings, called associations, between the various user identities in various user registries for a person in your enterprise. EIM also provides a common set of APIs that can be used across platforms to develop applications that can use the identity mappings that you create to look up the relationships between user identities.

If you are a system administrator, you can configure and manage EIM through System i<sup>™</sup> Navigator, the graphical user interface. The iSeries server uses EIM to enable i5/OS interfaces to authenticate users by means of network authentication service.

While System i Navigator provides an interface for administrators to manage all user EIM identity mappings, it does not provide a secure interface for non-administrative users to manage their own identities. However, non-administrators (users) can manage their own identities in an EIM domain when EIM is configured by the IBM Welcome Page V1.1 application. Once configured, users can sign into the IBM Telephone Directory V5.2 application to update their directory entry and EIM identity mappings. The application only displays EIM identity mappings if a user logs in to update his or her own directory entry. By allowing users to manage their own EIM identity mappings, it helps ease the workload of the EIM domain administrator.

Not all associations can be set up by IBM Welcome Page V1.1 and managed by IBM Telephone Directory V5.2. The applications are only capable of authenticating identities that use LDAP or FTP protocols. If user registries are found that do not accept LDAP or FTP authentication, associations with that user registry cannot be added. The applications must be able to authenticate a user's identity using LDAP or FTP before an association for that identity can be added to the user's EIM identifier.

See Enterprise Identity Mapping (EIM) in the Security and Directory server topic for more information.

---

## Install IBM Business Solutions

This topic provides information about how to install IBM Business Solutions (which includes the installation of IBM Welcome Page V1.1 and IBM Telephone Directory V5.2) on your server, deploy the applications into an application server run time, and configure the applications.

IBM Welcome Page V1.1 is part of the *IBM Business Solutions Version 1.0* package. This package provides a set of enterprise Web applications available for iSeries servers. Each application is an integrated solution to a common business need that works in conjunction with your existing applications, server components, and enterprise data.

As part of *IBM Business Solutions Version 1.0*, the IBM Welcome Page V1.1, IBM Telephone Directory V5.2, and IBM Survey Creator V1.0 applications are installed and configured in the IBM HTTP Server for i5/OS Web administration GUI. After installation and configuration, the applications are deployed into an application server runtime environment. You must deploy IBM Telephone Directory V5.2 and IBM Survey Creator V1.0 to deploy IBM Welcome Page V1.1.

Generally, you must install, configure, and deploy *IBM Business Solutions Version 1.0* before you can use the IBM Welcome Page V1.1, IBM Telephone Directory V5.2, and IBM Survey Creator V1.0 applications:

Perform the following steps to install IBM Business Solutions:

### Verify the prerequisites

This step provides information about hardware and software prerequisites that must be verified before you install *IBM Business Solutions Version 1.0*.



Before you install the IBM Welcome Page V1.1 and IBM Telephone Directory V5.2 applications, verify that your iSeries software meets the minimum requirements.

## Product software

- **IBM Business Solutions Version 1.0 (5722-BZ1)**

IBM Business Solutions are a collection of business applications that work in conjunction with your existing enterprise applications and server components. The business applications include IBM Welcome Page 1.1 and IBM Telephone Directory V5.2.

## Required software

- **i5/OS V5R4 or V5R3**

Your user profile must have \*SECADM, \*ALLOBJ, and \*IOSYSCFG authorities.

- **WebSphere Application Server**

The IBM Welcome Page V1.1 and IBM Telephone Directory V5.2 applications can run on the following versions of WebSphere Application Server:

- WebSphere Application Server V6
- WebSphere Application Server V6.1
- WebSphere Application Server - Express V6
- WebSphere Application Server - Express V6.1

- **IBM Tivoli Directory Server for i5/OS (LDAP) or Domino LDAP directory server**

A IBM Tivoli Directory Server for i5/OS (LDAP) needs to be available for the IBM Welcome Page V1.1 and IBM Telephone Directory V5.2 applications to use. The applications and the directory server can reside on the same iSeries server, or the directory server can reside on a remote iSeries server.

As an alternative to Directory Server (LDAP), you can use LDAP on Domino 6.0 for iSeries (Domino Directory services) as your directory server.


- **IBM HTTP Server for i5/OS (5761-DG1)**

IBM HTTP Server provides the authentication necessary to update and add entries in the IBM Telephone Directory V5.2 application.

- **System i Navigator**

The graphical user interface (GUI) to the iSeries server, System i Navigator, might be required to do LDAP directory server configuration and setup.

- All necessary WebSphere Application Server or WebSphere Application Server - Express fixes.

For a list of current fixes, see WebSphere Application Server PTFs  (<http://www.ibm.com/servers/eserver/series/software/websphere/wsappserver/services/service.html>).

- All necessary IBM Business Solutions fixes.

For a list of current fixes, see IBM Business Solutions  (<http://www.ibm.com/servers/eserver/series/software/bizapps/ptfs.html>).

## Optional software

- **i5/OS Digital Certificate Manager (5722-SS1 option 34)**

Required if you plan to use Secure Sockets Layer (SSL) protocol. See the Enabling SSL and Transport Layer Security on the Directory Server topic for more information.

- **A Cryptographic Access Provider**

Required if you plan to use SSL. You can choose one of these options: 5722-AC2 (56-bit), 5722-AC3 (128-bit). If you are using V5R4 or later, 5722-AC3 is part of the operating system and does not need to be installed separately.

### Related information

Enabling SSL and Transport Layer Security on the Directory Server

## Install the applications

This step installs *IBM Business Solutions Version 1.0* on your iSeries server. This installs both the IBM Welcome Page V1.1 and IBM Telephone Directory V5.2 applications.

After you have checked for prerequisite applications and options, use these steps to install IBM Business Solutions, which includes IBM Welcome Page V1.1 and IBM Telephone Directory V5.2:

1. Ensure that your user profile has \*ALLOBJ and \*SECADM authority.
2. Place the IBM Business Solutions Version 1.0 CD-ROM in the CD-ROM drive of your iSeries server.
3. On the CL command line, enter this command:

```
RSTLICPGM LICPGM(5722BZ1) DEV(OPT01)
```

where *OPT01* is your CD-ROM drive. A confirmation message appears when the product is successfully restored.

The install of the product creates the following directories:

- **/QIBM/ProdData/IBS**

This is the product root directory. Files under this directory structure should not be modified.

- **/QIBM/ProdData/IBS/installable/**

This is where the Enterprise archive (EAR) files for the applications are stored. This directory is important only if you need to manually configure and deploy the applications (such as if you are going to deploy into WebSphere Application Server for iSeries, Network Deployment).

## Verify that the product was successfully installed

To verify that the product was successfully installed, perform the following steps:

1. Enter this command on the CL command line:
2. Enter 10 on the CL command line to select option 10.
3. The following product should be installed:

```
5722BZ1    *BASE    IBM Business Solutions
```

## Configure and deploy the applications

This step uses the HTTP server Web administration GUI to create a new application server and HTTP server (or use an existing application server and HTTP server, if you prefer) that runs the IBM Welcome Page V1.1 and IBM Telephone Directory V5.2 applications.

IBM Business Solutions is configured and deployed using the IBM HTTP server Web administration GUI. Use these steps to configure IBM Business Solutions, which includes the IBM Welcome Page V1.1 and IBM Telephone Directory V5.2 applications:

**Note:** Before you begin, make sure you know your server's LDAP directory server distinguished name (DN) and password.

There are several ways to configure and deploy IBM Business Solutions. Using the HTTP Web administration GUI and associated wizards, you can deploy the applications into either a new or existing application server runtime environment. Use these options if you are deploying into WebSphere Application Server (Base) or WebSphere Application Server - Express. However, if you are deploying into WebSphere Application Server, Network Deployment, you must manually deploy the applications into the application server runtime.

## Configure and deploy into a new application server

Use this option if you want to deploy IBM Business Solutions into a new application server runtime environment.

The IBM Welcome Page V1.1 and IBM Telephone Directory V5.2 applications can be deployed into a new application server runtime environment. Perform the following steps to create a new application server and HTTP server:

1. Open your Web browser, and enter the following URL:

`http://your.server.name:2001`

where *your.server.name* is the name of your iSeries server.

**Note:** HTTP server administration must be started for this URL to be successfully displayed. To start HTTP server administration, enter the following command on the CL command line:

```
STRTCPSVR SERVER(*HTTP) HTTPSVR(*ADMIN)
```

2. Enter your user profile name and password, if applicable. The user profile must have \*ALLOBJ and \*IOSYSCFG special authority.
3. Click **IBM Web Administration for iSeries**.
4. Click the **Manage** tab.
5. Click the **Application Servers** tab.
6. Under the **Common Tasks and Wizards** heading, click **Create Application Server**. This launches the **Create Application Server** wizard. Click **Next**.
7. Select the edition of WebSphere Application Server that is installed on your iSeries server.

The IBM Welcome Page V1.1 and IBM Telephone Directory V5.2 applications can run on the following versions of WebSphere Application Server:

- WebSphere Application Server V6
- WebSphere Application Server V6.1
- WebSphere Application Server - Express V6
- WebSphere Application Server - Express V6.1


**Note:** The **Create Application Server** wizard cannot be used to configure the Network Deployment (ND) edition of WebSphere Application Server. See *Manually configure and deploy into WebSphere Application Server, Network Deployment* for more information.

8. Click **Next**.
9. Specify an application server name. The name can contain alphanumeric characters, but it cannot contain imbedded blanks or slashes. Optionally, specify an application server description. Click **Next**.
10. Select the type of HTTP server you want to use, and click **Next**. The application server requires an association with an HTTP server, which routes the incoming URL requests to the new application server.
  - a. If you are creating a new HTTP server, specify a name for the HTTP server. It is recommended that you specify the same name as your application server.
  - b. Optionally, specify a description for the new HTTP server.
  - c. Select the appropriate values for the **IP Address** field and the **Port** field. The IP address and port you specify must not be in use by any other server on your system. The values you specify are used to determine the URL of the IBM Welcome Page V1.1 application.
  - d. Click **Next**.
11. Specify your internal port number, and click **Next**. Your internal port number is the first port in a range of 12 consecutive ports that are used for internal processing by the application server. If you need to find out what ports are available, do the following:
  - a. On the CL command line, specify NETSTAT.





- b. On the **Work with TCP/IP Network Status** screen, select Option 3 to see the ports that are currently in use.
  - c. Press **F14** to display port numbers.
  - d. Find the first port in a range of ports not currently in use, and enter this port number in the application server wizard.
12. On the **Select Business and Sample Applications** page of the wizard, select **IBM Telephone Directory**, and click **Next**. By selecting this option, you are installing both the IBM Telephone Directory V5.2 application and the IBM Welcome Page V1.1 application.
13. On the **Business application install - Configuration for LDAP** page of the wizard, specify the following fields:
  - a. Specify your LDAP server host name in the **LDAP server host name** field.
  - b. Specify the LDAP port in the **LDAP port** field. The default non-secured port is 389.
  - c. Note that the IBM Telephone Directory V5.2 (and IBM Welcome Page V1.1) administrator ID is **Administrator** and the group administrator ID is **Administrators**.
  - d. Specify the password that you will use for the IBM Telephone Directory V5.2 (and IBM Welcome Page V1.1) application administrator.
  - e. Confirm the password you specified.
  - f. Select whether you want to give IBM Telephone Directory V5.2 users the option to be able to enroll themselves (open enrollment).
  - g. Click **Next**.
14. On the **Business application install - Configuration for LDAP** page of the wizard, specify your LDAP user and password. The default LDAP administrator DN is cn=Administrator. Click **Next**.
15. Specify the parent DN for user entries. By default, this entry has the form cn=users,DC=SERVER,DC=COMPANY,DC=COM.
16. Specify the parent DN for the administrative group entry. By default, this entry has the form cn=users,DC=SERVER,DC=COMPANY,DC=COM.
17. On the **Summary** page of the wizard, take note of the URL to access the IBM Telephone Directory V5.2 (and IBM Welcome Page V1.1) applications. The case-sensitive URL's have the form of:
  - Usage - *http://your.server.name:port/ibm-bizApps/welcome*.
  - Administration - *http://your.server.name:port/ibm-bizApps/welcome/admin.do*.
18. Click **Finish** to complete the configuration.

After the IBM Welcome Page V1.1 and IBM Telephone Directory V5.2 applications have been deployed into the application server instance, you must wait for the application deployment to complete before you

can start the server and begin using the application. You can use the **Refresh** button  to determine if the application has completed the installation process.

#### **Application has completed the deployment process:**

Once the application has completed the deployment process, perform the following steps:

1. On the **Manage Application Server** page, click **Start**  to start the application server.
2. Select the HTTP server associated with your application server from the drop-down list of servers.
3. Click **Start**  to start the HTTP server.

IBM Welcome Page V1.1 and IBM Telephone Directory V5.2 are automatically started.

## Configure and deploy into an existing application server

Use this option if you want to deploy IBM Business Solutions into an existing application server runtime environment.

The IBM Welcome Page V1.1 and IBM Telephone Directory V5.2 applications can be deployed into an existing application server runtime environment. Perform the following steps to use an existing application server and HTTP server:

1. Open your Web browser, and enter the following URL:

`http://your.server.name:2001`

where *your.server.name* is the name of your iSeries server.


**Note:** HTTP server administration must be started for this URL to be successfully displayed. To start HTTP server administration, enter the following command on the CL command line:

```
STRTCPSVR SERVER(*HTTP) HTTPSVR(*ADMIN)
```

2. Enter your user profile name and password, if applicable. The user profile must have \*ALLOBJ and \*IOSYSCFG special authority.
3. Click **IBM Web Administration for iSeries**.
4. Click the **Manage** tab.
5. Click the **Application Servers** tab.
6. Select your application server from the **Instance/server** drop-down field.
7. Under the **WebSphere Application Server Wizards** heading, click **Deploy IBM Telephone Directory**.
8. Click **Next**.
9. Specify your virtual host name, and click **Next**.
10. Select the HTTP server you want to use, and click **Next**. The application server requires an associated with an HTTP server, which routes the incoming URL requests to the new application server.
  - a. If you are creating a new HTTP server, specify a name for the HTTP server. It is recommended that you specify the same name as your application server.
  - b. Optionally, specify a description for the new HTTP server.
  - c. Select the appropriate values for the **IP Address** field and the **Port** field. The IP address and port you specify must not be in use by any other server on your system. The values you specify are used to determine the URL of the IBM Welcome Page V1.1 application.
  - d. Click **Next**.
11. You can specify how the resources are to be accessed from a browser. Select the IP access type you want to use, and click **Next**.
12. On the **Business application install - Configuration for LDAP** page of the wizard, specify the following fields:
  - a. Specify your LDAP server host name in the **LDAP server host name** field.
  - b. Specify the LDAP port in the **LDAP port** field. The default non-secured port is 389.
  - c. Note that the IBM Telephone Directory V5.2 (and IBM Welcome Page V1.1) administrator ID is **Administrator** and the group administrator ID is **Administrators**.
  - d. Specify the password that you will use for the IBM Telephone Directory V5.2 (and IBM Welcome Page V1.1) application administrator.
  - e. Confirm the password you specified.
  - f. Select whether you want to give IBM Telephone Directory V5.2 users the option to be able to enroll themselves (open enrollment).
  - g. Click **Next**.



13. On the **Business application install - Configuration for LDAP** page of the wizard, specify your LDAP user and password. The default LDAP administrator DN is cn=Administrator. Click **Next**.
14. Specify the parent DN for user and administrative group entries. By default, these entries have the form cn=users,DC=SERVER,DC=COMPANY,DC=COM.
15. Click **Next**.
16. On the **Summary** page of the wizard, take note of the URL to access the IBM Telephone Directory V5.2 (and IBM Welcome Page V1.1) applications. Typically, the case-sensitive URL's have the form of:
  - Usage - *http://your.server.name:port/ibm-bizApps/welcome*.
  - Administration - *http://your.server.name:port/ibm-bizApps/welcome/admin.do*.
17. Click **Finish** to complete the configuration.

After the IBM Welcome Page V1.1 and IBM Telephone Directory V5.2 applications have been deployed into the application server instance, you must wait for the application deployment to complete before you

can start the server and begin using the application. You can use the **Refresh** button  to determine if the application has completed the installation process.

#### **Application has completed the deployment process:**

Once the application has completed the deployment process, perform the following steps:

1. On the **Manage Application Server** page, click **Start**  to start the application server.
2. Select the HTTP server associated with your application server from the drop-down list of servers.
3. Click **Start**  to start the HTTP server.

IBM Welcome Page V1.1 and IBM Telephone Directory V5.2 are automatically started.

### **Manually configure and deploy into WebSphere Application Server, Network Deployment**

Use this option if you want to deploy IBM Business Solutions into a WebSphere Application Server, Network Deployment (ND) runtime environment. This option involves manual setup and does not use wizards associated with the HTTP server Web administration GUI.

The IBM Welcome Page V1.1 and IBM Telephone Directory V5.2 applications can be set up and deployed manually (without the assistance of a wizard). Generally, this is only necessary if you are going to use the applications in a WebSphere Application Server, Network Deployment V5, V5.1, or V6 runtime environment.

Perform the following steps to manually configure and deploy IBM Business Solutions:

1. Create an application server.
  - a. Start the WebSphere Application Server, Network Deployment administrative console.
  - b. In the topology tree, expand **Servers** and click **Application Servers**.
  - c. On the **Application Servers** page, click **New**.
  - d. Specify a name for the application server. You can also specify optional properties:
    - You can create the application server on any node in your Network Deployment cell.
    - By default, when a new application server is created, WebSphere Application Server assigns unique HTTP ports to the new server. It is recommended that you generate unique ports for you new application server.
    - You can create the new server based on an existing application server or based on the default application server template.
  - e. Click **Next**.

- f. Review the summary of the new application server's configuration, and click **Finish**.
  - g. Save the configuration.
2. Install the IBM Welcome Page V1.1 application into your application server.
  - a. Start the administrative console.
  - b. Expand **Applications** and click **Install New Application**.
  - c. Specify the path of the application that you want to install. Select **Server path**, and specify the fully qualified path of the application:  
`/QIBM/ProdData/IBS/installable/IBM Welcome Page v1.1.ear`
  - d. Click **Next**.
  - e. Specify options for bindings and mappings.
  - f. Click **Next**.
  - g. Provide additional options to perform the installation as necessary. See Install and uninstall applications in the WebSphere Application Server V5.1 Administration topic for more information.
  - h. On the **Summary** panel, verify that the installation settings are correct. For the Cell/Node/Server item, click **Click here** to verify the settings.
  - i. Click **Finish**.
  - j. Save the configuration. The application is registered with the administrative configuration and application files are copied to the target directory. For a WebSphere Application Server Network Deployment instance, application files are copied to remote nodes when you synchronize configuration changes.
  - k. Start the application.
3. Install the IBM Telephone Directory V5.2 application into your application server.
  - a. Start the administrative console.
  - b. Expand **Applications** and click **Install New Application**.
  - c. Specify the path of the application that you want to install. Select **Server path**, and specify the fully qualified path of the application:  
`/QIBM/ProdData/IBS/installable/IBM Telephone Directory v5.2.ear`
  - d. Click **Next**.
  - e. Specify options for bindings and mappings.
  - f. Click **Next**.
  - g. Provide additional options to perform the installation as necessary. See Install and uninstall applications in the WebSphere Application Server V5.1 Administration topic for more information.
  - h. On the **Summary** panel, verify that the installation settings are correct. For the Cell/Node/Server item, click **Click here** to verify the settings.
  - i. Click **Finish**.
  - j. Save the configuration. The application is registered with the administrative configuration and application files are copied to the target directory. For a WebSphere Application Server Network Deployment instance, application files are copied to remote nodes when you synchronize configuration changes.
  - k. Start the application.
4. Regenerate the plug-in configuration for a federated node.
  - a. From the CL command line, run the Start Qshell (STRQSH) command.
  - b. Use the cd command to change to the bin directory for the WebSphere Application Server product:  
`cd /QIBM/ProdData/WebAS51/ND/bin`
  - c. At the Qshell prompt, run the GenPluginCfg script. To view the customizations available for this script, run this command:  
`GenPluginCfg -help`
  - d. The plug-in file named plugin-cfg.xml is regenerated in this location:

/QIBM/UserData/WebAS51/ND/  
instance/config/cells

where *instance* is the name of your application server instance.

5. If you regenerate the plugin-cfg.xml file for the Network Deployment instance, and you want to synchronize the updated file across all of the nodes in your network, perform these steps:

- a. Save a backup copy of the edited plugin-cfg.xml file for each federated node.
- b. Force node synchronization of each federated node.
- c. On each node, replace or edit the updated plugin-cfg.xml:
  - Replace the updated file with the saved copy of that node's plugin-cfg.xml file.
  - Merge the customized sections from the backup copy into the new plugin-cfg.xml file.

6. Set up LDAP properties.

- a. Access the IBM Welcome Page V1.1 administrator pages by entering the following URL in your Web browser:

`http://your.server.name:port/ibm-bizApps/welcome/admin.do`

where *your.server.name* is the name of the application server where IBM Welcome Page V1.1 is installed and *port* is the port number that was specified during installation.

- b. Enter your LDAP distinguished name (DN) and password. By default, the Administrator DN is `cn=Administrator`. Click **Login**.
- c. Specify the following server properties:
  - **LDAP ports allowed:** Select either Standard port or SSL port. Standard port is the standard TCP/IP port number used by the directory server. SSL port is the secure port number used by the directory server.
  - **Authentication realm:** Specify the realm name used on login prompts to inform users what name and password to provide. The value must be different than the one that is specified for administrators.
  - **Authentication port:** Select either Standard or SSL as the authentication port.

For detailed information about administering LDAP properties, see Administer IBM Welcome Page V1.1.

- d. Click **Save Changes**.

7. Create and set up an IBM HTTP Server powered by Apache 2.2 and configure directives.

- a. Open your Web browser, and enter the following URL:

`http://your.server.name:2001`

where *your.server.name* is the name of your iSeries server

**Note:** HTTP server administration must be started for this URL to be successfully displayed. To start HTTP server administration, enter the following command on the CL command line:

```
STRTCPSVR SERVER(*HTTP) HTTPSVR(*ADMIN)
```

- b. Enter your user profile name and password, if applicable. The user profile must have \*ALLOBJ and \*IOSYSCFG special authority.
- c. Click **IBM HTTP Server for i5/OS**.
- d. Click the **Manage** tab.
- e. Click the **HTTP Servers** tab.
- f. Select the HTTP server you want to use
- g. Under **Server Properties**, click **WebSphere Application Server**.
- h. Select the version of WebSphere Application Server you want to use. Select your application server from the drop-down list that appears. Click **OK**.
- i. Under the **Server Properties** heading, click **General Server Configuration**.
- j. Click the **Configuration Includes** tab. In the **Include files** table, click **Add**.

- k. Specify the location for your `apache20.inc` file. For example, specify:

```
QIBM/UserData/  
was_edition/Base/  
instance/ibs/  
instance/apache20.inc
```

where *was\_edition* is the WebSphere Application Server edition you are running, and *instance* is the name of your WebSphere Application Server instance.

- l. Click **OK**.

8. Start the application server and the HTTP server.

The case-sensitive URL to access the IBM Telephone Directory V5.2 (and IBM Welcome Page V1.1) applications has the form `http://your.server.name:port/ibm-bizApps`.

## Verify installation and setup

This step shows you how to access the IBM Welcome Page V1.1 and IBM Telephone Directory V5.2 applications and verify a successful installation.

You are now ready to verify that you have successfully installed and deployed the IBM Welcome Page V1.1 application and the IBM Telephone Directory V5.2 application:

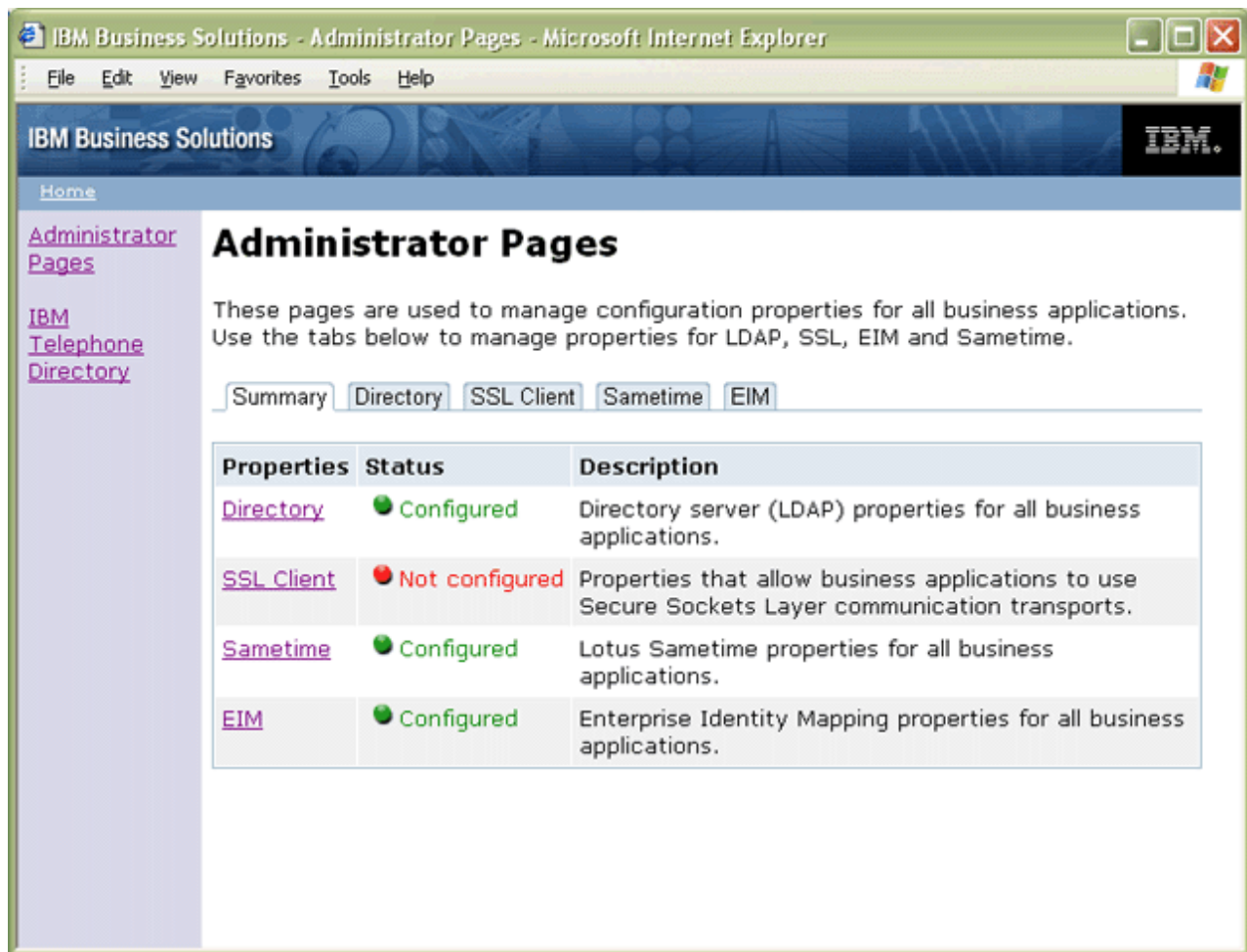
## Administrative interface

In your Web browser, enter the following URL:

```
http://your.server.name:port/ibm-bizApps/welcome/admin.do
```

where *your.server.name* is the name of your iSeries server and *port* is your external HTTP port number. The URL is case-sensitive. The IBM Welcome Page administrator pages is the entry point for administration of IBM-supplied business applications for WebSphere Application Server for iSeries and WebSphere Application Server - Express for iSeries. As more become available, they will be listed here.





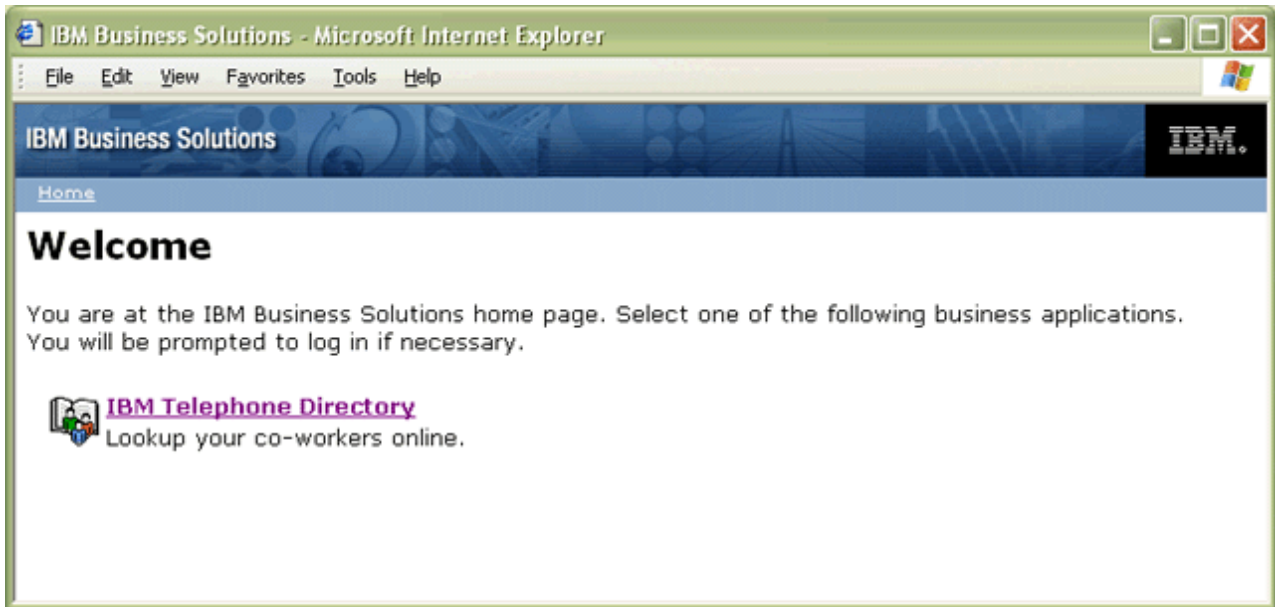
If you are unable to view the IBM Welcome Page V1.1 administrator pages, see Troubleshoot IBM Welcome Page V1.1.

## Non-administrative interface

In your Web browser, enter the following URL:

`http://your.server.name:port/ibm-bizApps/welcome/home.do`

where *your.server.name* is the name of your iSeries server and *port* is your external HTTP port number. The URL is case-sensitive. The IBM Welcome Page application is the entry point for IBM-supplied and Web-based business applications for WebSphere Application Server for i5/OS and WebSphere Application Server - Express for i5/OS. As more become available, they will be listed here.



If you are unable to view the IBM Welcome Page V1.1 non-administrator pages, see Troubleshoot IBM Welcome Page V1.1.

If you are unable to view the link to the IBM Telephone Directory V5.2 application, see Troubleshoot IBM Telephone Directory V5.2 in the IBM Telephone Directory V5.2 topic for more information.

---

## Administer IBM Welcome Page V1.1

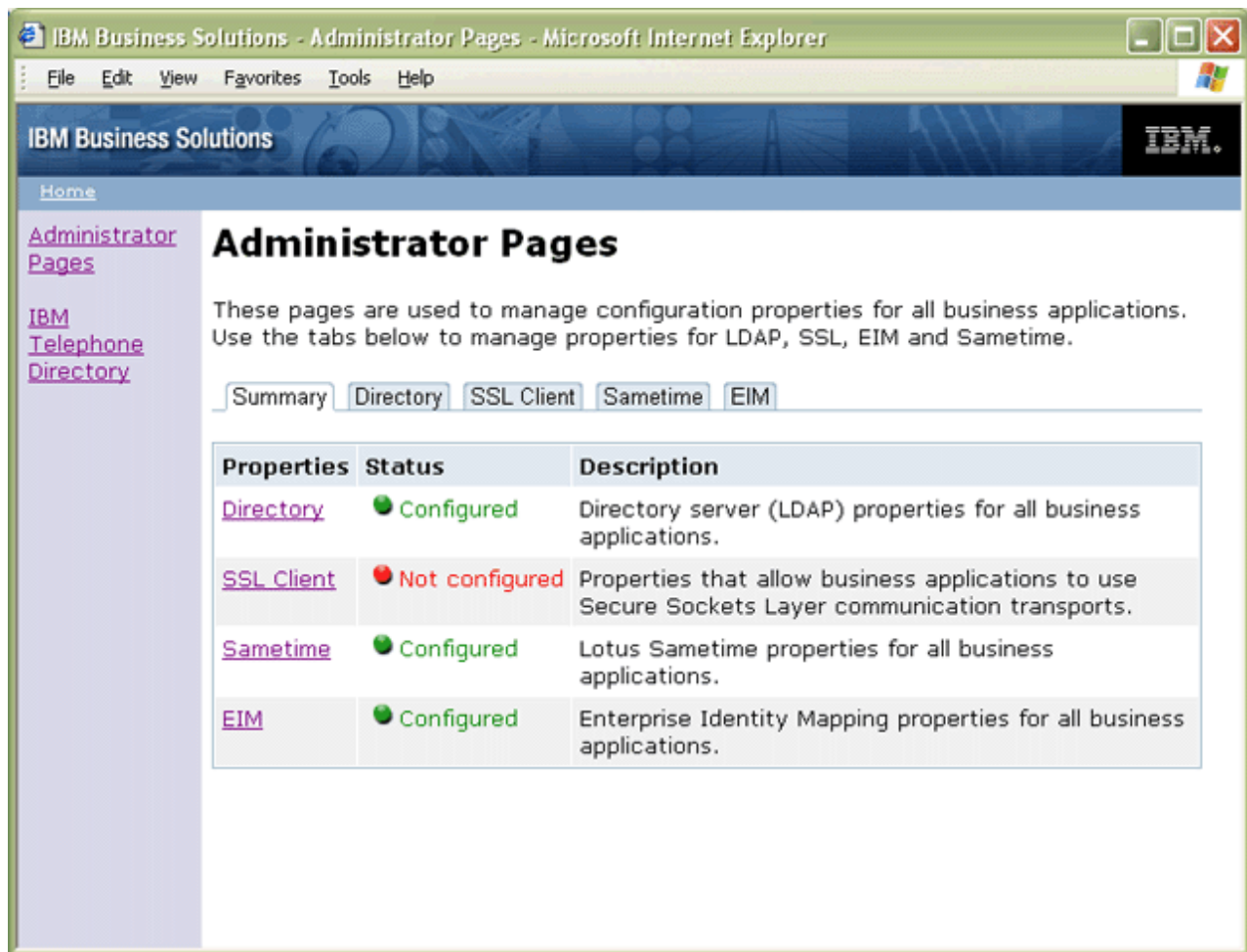
This topic provides administrative information for administrators of the IBM Welcome Page V1.1 application. Information includes how to administer application entries and application properties.

To access the IBM Welcome Page V1.1 administrator pages, enter the following URL in your Web browser:

`http://your.server.name:port/ibm-bizApps/welcome/admin.do`

where *your.server.name* is the name of the application server where IBM Welcome Page V1.1 is installed and *port* is the port number that was specified during installation.





You can use the IBM Welcome Page V1.1 application to manage the following properties that are used by other IBM Business Solution applications:

### Manage directory server (LDAP) properties

Use the following tasks to set up and manage directory server properties:

- Manage server properties
- Manage user entry properties
- Manage group entry properties
- Manage administrator properties

### Manage SSL Client properties

Use the following tasks to manage SSL Client properties:

- Manage client certificates
- Manage CA certificates

### Manage Enterprise Identity Mapping (EIM) properties

Use the following tasks to manage EIM server and domain properties:

- Manage EIM server properties

- Manage EIM domain properties

**Note:** EIM is not available on iSeries servers that run OS/400® V5R1. If EIM is not available on your iSeries server, a tab for EIM administration does not appear in the IBM Welcome Page V1.1 application.

## Manage Lotus Sametime properties

Use the following tasks to manage Lotus Sametime and STLinks properties:

- Manage Sametime server properties
- Manage STLinks properties

See Use IBM Welcome Page V1.1 for more information about how to perform common user tasks for the application.

## Manage server properties

To manage directory server properties, use the IBM Welcome Page V1.1 administrator pages.

Perform the following steps:

1. Access the IBM Welcome Page V1.1 administrator pages by entering the following URL in your Web browser:  
`http://your.server.name:port/ibm-bizApps/welcome/admin.do`  
 where *your.server.name* is the name of the application server where IBM Welcome Page V1.1 is installed and *port* is the port number that was specified during installation.
2. Click the **Directory** tab.
3. To set up and change directory properties, you must log in as the directory server administrator. Click **set up and change directory properties**.
4. Enter your LDAP distinguished name (DN) and password. By default, the Administrator DN is `cn=Administrator`. Click **Login**.
5. You can change the following server properties:
  - **LDAP ports allowed:** Select either Standard port or SSL port. Standard port is the standard TCP/IP port number used by the directory server. SSL port is the secure port number used by the directory server.
  - **Authentication realm:** Specify the realm name used on login prompts to inform users what name and password to provide. The value must be different than the one that is specified for administrators.
  - **Authentication port:** Select either Standard or SSL as the authentication port.
6. Click **Save Changes**.

## Manage user entry properties

To manage directory server user entry properties, use the IBM Welcome Page V1.1 administrator pages.

Perform the following steps:

1. Access the IBM Welcome Page V1.1 administrator pages by entering the following URL in your Web browser:  
`http://your.server.name:port/ibm-bizApps/welcome/admin.do`  
 where *your.server.name* is the name of the application server where IBM Welcome Page V1.1 is installed and *port* is the port number that was specified during installation.
2. Click the **Directory** tab.
3. To set up and change directory properties, you must log in as the directory server administrator. Click **set up and change directory properties**.

4. Enter your LDAP distinguished name (DN) and password. By default, the Administrator DN is `cn=Administrator`. Click **Login**.
5. You can change the following user entry properties:
  - **Parent DN:** Specify the distinguished name (DN) value of the parent directory for user entries.
  - **Naming attribute:** Select the naming attribute used in the directory server. Values include `cn`, `mail`, `serialNumber`, or `uid`.
  - **Object class:** Specify the object class name that is used to identify user entries in the directory.
6. Click **Save Changes**.

## Manage group entry properties

To manage directory server group entry properties, use the IBM Welcome Page V1.1 administrator pages.

Perform the following steps:

1. Access the IBM Welcome Page V1.1 administrator pages by entering the following URL in your Web browser:  
`http://your.server.name:port/ibm-bizApps/welcome/admin.do`  
where *your.server.name* is the name of the application server where IBM Welcome Page V1.1 is installed and *port* is the port number that was specified during installation.
2. Click the **Directory** tab.
3. To set up and change directory properties, you must log in as the directory server administrator. Click **set up and change directory properties**.
4. Enter your LDAP distinguished name (DN) and password. By default, the Administrator DN is `cn=Administrator`. Click **Login**.
5. You can change the following group entry properties:
  - **Parent DN:** Specify the distinguished name (DN) value of the parent directory for group entries.
  - **Naming attribute:** Select the naming attribute used in the directory server.
  - **Object class:** Specify the object class name used to identify group entries in the directory.
  - **Member attribute:** Select the member attribute used for group entries. Values include `uniqueMember` and `member`.
6. Click **Save Changes**.

## Manage administrator properties

To manage directory server administrator properties, use the IBM Welcome Page V1.1 administrator pages.

Perform the following steps:

1. Access the IBM Welcome Page V1.1 administrator pages by entering the following URL in your Web browser:  
`http://your.server.name:port/ibm-bizApps/welcome/admin.do`  
where *your.server.name* is the name of the application server where IBM Welcome Page V1.1 is installed and *port* is the port number that was specified during installation.
2. Click the **Directory** tab.
3. To set up and change directory properties, you must log in as the directory server administrator. Click **set up and change directory properties**.
4. Enter your LDAP distinguished name (DN) and password. By default, the Administrator DN is `cn=Administrator`. Click **Login**.
5. You can change the following directory server administrator properties:
  - **Name:** Specify the name of an administrator for business applications. If an entry does not exist in the directory for the user specified, one will be created.

- **Password:** Specify the password for the administrator. This value is only used if the administrator entry does not exist and must be created.
- **Confirm Password:** Specify the password entered in the **Password** field.
- **Group:** Specify the name of the group that is used to identify administrators for business applications. If an entry does not exist in the directory for this group, one will be created.
- **Authentication realm:** Specify the realm name used on login prompts for administrators. The value must be different than the one specified for general users.
- **Contact information:** Specify a message that is displayed to users when problems occur. For example, the message may provide an administrator's name, telephone number, or e-mail address.

6. Click **Save Changes**.

## Manage client certificates

To manage client certificates, use the IBM Welcome Page V1.1 administrator pages.

Perform the following steps:

1. Access the IBM Welcome Page V1.1 administrator pages by entering the following URL in your Web browser:  
`http://your.server.name:port/ibm-bizApps/welcome/admin.do`  
 where *your.server.name* is the name of the application server where IBM Welcome Page V1.1 is installed and *port* is the port number that was specified during installation.
2. Click the **SSL Client** tab.
3. You can change the following client certificate properties:
  - **Keyring file:** Specify the path name of the keyring file containing client certificates for SSL communication.
  - **Keyring file password:** Specify the password for the keyring file. If specified, the value is stored and replaces any previously stored password for the specified keyring file.
4. Click **Save Properties**.

You can also delete SSL client properties from this administrator page.

See the Secure Sockets Layer (SSL) in the Networking Security topic for more information about SSL.

## Manage CA certificates

To change Certificate Authority (CA) certificate properties, use the IBM Welcome Page V1.1 administrator pages.

Perform the following steps:

1. Access the IBM Welcome Page V1.1 administrator pages by entering the following URL in your Web browser:  
`http://your.server.name:port/ibm-bizApps/welcome/admin.do`  
 where *your.server.name* is the name of the application server where IBM Welcome Page V1.1 is installed and *port* is the port number that was specified during installation.
2. Click the **SSL Client** tab.
3. You can change the following CA certificate properties:
  - **Keyring file:** Specify the path name of the keyring file containing CA certificates for SSL communication.
  - **Keyring file password:** Specify the password for the keyring file. If specified, the value is stored and replaces any previously stored password for the specified keyring file.
4. Click **Save Properties**.

You can also delete SSL client properties from this administrator page.

See the Secure Sockets Layer (SSL) in the Networking Security topic for more information about SSL.

## Manage EIM server properties

Enterprise Identity Mapping (EIM) registration and identity mapping allows users to register with the EIM domain server and manage their identity mappings online.

Applications may use the configuration properties to communicate with an EIM domain server. Once connected, applications may search the domain for the required aliases added by an EIM administrator, which provide the means to map user registries to the physical system.

**Note:** Before you enable EIM registration and identity mapping, see Interaction with an Enterprise Identity Mapping server for information about how the IBM Welcome Page V1.1 application uses EIM and any limitations of EIM integration in the application. EIM is not available on iSeries servers that run OS/400 V5R1. If EIM is not available on your iSeries server, a tab for EIM administration does not appear in the IBM Welcome Page V1.1 application. Additionally, make sure that you have all the necessary PTFs applied to your server to use EIM in V5R2. See Verify the prerequisites for more information.

For more information about EIM properties and adding aliases, see the following topics:

- “Manage EIM properties”
- “Add your aliases to user registries”
- “Add aliases to other system or application user registries” on page 25

## Manage EIM properties

To manage EIM properties for all business applications, use the IBM Welcome Page V1.1 administrator pages. Perform the following steps:

1. Make sure that EIM is set up and started on your iSeries server.
2. Access the IBM Survey Creator application by entering the following URL in your Web browser:  
`http://your.server.name:port/ibm-bizApps/welcome/admin.do`  
where *your.server.name* is the name of the server where IBM Welcome Page is installed and *port* is the port number that was specified during installation.
3. Click the **EIM** tab. If EIM is not available on your iSeries server, this tab is not available in the IBM Welcome Page V1.1 interface.
4. To change EIM server properties, you must log in as the application administrator.
5. You can change the following EIM server properties:
  - **Host name:** Specify the IP host name or address of the EIM repository server you want business applications to use.
  - **LDAP ports allowed:** Select either Standard port or SSL port. Standard port is the standard TCP/IP port number used by the EIM server. SSL port is the secure port number used by the EIM server.
6. Click **Save Properties** or **Delete Properties**, depending on what you want to change.

## Add your aliases to user registries

After the EIM properties have been modified, you must use System i Navigator to set up and administer EIM domain servers. You must add aliases to user registries that are defined for the EIM domain. Aliases provide the information that applications need to map an abstract user registry to a system host name, port, and authentication method.

Perform the following steps to add an alias to set up the system user registry for business application users:

1. From System i Navigator, expand **Domain Management**.
2. Expand the name of the EIM domain you want to manage.
3. If necessary, enter the DN and password for your domain's administrator, and click **OK**.
4. Click **User Registries**. A list of registries appear in the right panel.
5. In the **Enterprise Identity Mapping tasks** panel, click **Add a new system registry**.

**Note:** If the task panel is not visible, go to the top menu, click **View**, and select **Taskpad**. There should now be a checkmark next to Taskpad, and the task area should be visible.

6. In the **Add System Registry** window, perform the following steps:
  - a. In the **Registry** field, specify a name for the new registry.
  - b. In the **Type** field, select **LDAP**.
  - c. In the **Alias** field, specify the host name and TCP/IP port number that the directory server uses and that the applications are configured to use. For example, if they are configured to use the directory server at server.rchland.ibm.com port 388, enter host=server.rchland.ibm.com, port=388 as the alias.

There are several properties that business applications observe in a user registry alias:

- **host** - This is the TCP/IP host name or IP address for this user registry. Business applications may use this value if they need to communicate with the system. For example, IBM Telephone Directory uses this value to validate user requests to add identity mappings (or associations) to their EIM identifier. There is no default value for this setting. For example, host=server.rchland.ibm.com.
- **protocol** - This is the protocol used to communicate with the system. Valid values are ldap and ftp where the default value is ldap. See **host** for details. For example, protocol=ftp.
- **port** - This is the TCP/IP port number used to communicate with the system. Valid values range between 1 and 65535. The default value is 389 if the ldap protocol is used, or 20 if the ftp protocol is used. See **host** for details. For example, port=388
- **os400-sys** - This is the os400-sys attribute value used to access OS/400 objects as entries within an LDAP-accessible directory tree. Business applications may use this value to access OS/400 user profiles that are projected as entries within a directory tree. This value is only used if the ldap protocol is used to communicate with an OS/400 system. The default value is the same as that specified for host (required). For example, os400-sys=system-A.rchland.ibm.com
- **readonly** - This indicates that the user registry is only to be used to read or obtain information. If specified, business applications may use or display identity mappings (or association) mapped to this user registry, but they may not add new identity mappings or remove/change any existing identity mapping. This setting is disabled by default. For example, readonly
- **Notes:**
  - Property names and values are not case sensitive.
  - If multiple properties are specified, they must be separated by a comma (',').
  - Properties may only be specified once, per alias. (No duplicates.)
  - Only one type IBS alias is allowed, per user registry.
  - Business applications look specifically for user registries with a type IBS alias. Those without a type IBS alias are ignored.
  - Alias types are case sensitive. IBS must be specified with all uppercase letters.

- d. Under the **Address aliases** heading, in the **Type** field, specify **IBS** (and overwrite anything that may already be shown or selected).
- e. Click **Add**.
- f. Click **OK**.



## Add aliases to other system or application user registries

Perform the following steps to add an alias to set up other system or application user registries:

1. From System i Navigator, expand **Domain Management**.
2. Expand the name of the EIM domain you want to manage.
3. If necessary, enter the DN and password for your domain's administrator, and click **OK**.
4. Click **User Registries**. A list of registries appear in the right panel.
5. In the **Enterprise Identity Mapping tasks panel**, click **Add a new system registry** to add a new system user registry, or **Add a new application registry** to add a new application user registry.

**Note:** If the task panel is not visible, go to the top menu, click View, and select Taskpad. There should now be a checkmark next to Taskpad, and the task area should be visible.

6. In the **Add System Registry** window or **Add Application Registry** window, perform the following steps:
  - a. In the **Registry** field, specify a name for the new registry.
  - b. If you are using the **Add System Registry wizard**, skip to step 6c. If you are using the **Add Application Registry wizard**, in the **Parent registry** field, specify the name of the system user registry of which this application user registry is a subset.
  - c. In the **Type** field, select the type of user registry definition that you want to add. You may choose a predefined type, or enter a value that meets your needs.
  - d. In the **Alias** field, specify the properties that business applications must use in the event they need to communicate with the system. See explanation of alias properties for details.

There are several properties that applications observe in a user registry alias:

- **host** - This is the TCP/IP host name or IP address for this user registry. Business applications may use this value if they need to communicate with the system. For example, IBM Telephone Directory uses this value to validate user requests to add identity mappings (or associations) to their EIM identifier. There is no default value for this setting. For example, `host=server.rchland.ibm.com`.
- **protocol** - This is the protocol used to communicate with the system. Valid values are ldap and ftp where the default value is ldap. See **host** for details. For example, `protocol=ftp`
- **port** - This is the TCP/IP port number used to communicate with the system. Valid values range between 1 and 65535. The default value is 389 if the ldap protocol is used, or 20 if the ftp protocol is used. See **host** for details. For example, `port=388`
- **os400-sys** - This is the os400-sys attribute value used to access OS/400 objects as entries within an LDAP-accessible directory tree. Business applications may use this value to access OS/400 user profiles that are projected as entries within a directory tree. This value is only used if the ldap protocol is used to communicate with an OS/400 system. The default value is the same as that specified for host (required). For example, `os400-sys=system-A.rchland.ibm.com`
- **readonly** - This indicates that the user registry is only to be used to read or obtain information. If specified, business applications may use or display identity mappings (or association) mapped to this user registry, but they may not add new identity mappings or remove/change any existing identity mapping. This setting is disabled by default. For example, `readonly`.
- **Notes:**
  - Property names and values are not case sensitive.
  - If multiple properties are specified, they must be separated by a comma (',').
  - Properties may only be specified once, per alias. (No duplicates.)
  - Only one type IBS alias is allowed, per user registry.
  - Business applications look specifically for user registries with a type IBS alias. Those without a type IBS alias are ignored.
  - Alias types are case sensitive. IBS must be specified with all uppercase letters.

- e. Under the **Address aliases** heading, in the **Type** field, specify **IBS** (and overwrite anything that may already be shown or selected).
- f. Click **Add**.
- g. Click **OK**.

You should now see your new registry in the list of system registries. This registry represents the directory server used by the applications. The alias you added to it allows the Web applications to identify it.

You may now add other registries that represent other servers. If you add a similar alias, the IBM Telephone Directory V5.2 application recognizes it and allows users to self-register their personal identities for those servers.

Currently, the IBM Telephone Directory V5.2 application is the only business application that uses EIM properties. It uses EIM properties to provide automatic EIM registration and self-management of user identities. See *Set up EIM registration and identity mapping in the IBM Telephone Directory V5.2 topic* for more information.

## Manage EIM domain properties

Enterprise Identity Mapping (EIM) registration and identity mapping allows users to register with the EIM domain server and manage their identity mappings online.

**Note:** Before you enable EIM registration and identity mapping, see *Interaction with an Enterprise Identity Mapping server* for information about how the IBM Welcome Page V1.1 application uses EIM and any limitations of EIM integration in the application. EIM is not available on iSeries servers that run OS/400 V5R1. If EIM is not available on your iSeries server, a tab for EIM administration does not appear in the IBM Welcome Page V1.1 application. Additionally, make sure that you have all the necessary PTFs applied to your server to use EIM in V5R2. See *Verify the prerequisites* for more information.

For more information about EIM properties and adding aliases see:

- “Change EIM domain properties”
- “Add your aliases to user registries” on page 27
- “Add aliases to other system or application user registries” on page 28

## Change EIM domain properties

To change EIM domain properties, use the IBM Welcome Page V1.1 administrator pages. Perform the following steps:

1. Make sure that EIM is set up and started on your iSeries server.
2. Access the IBM Survey Creator application by entering the following URL in your Web browser:  
`http://your.server.name:port/ibm-bizApps/welcome/admin.do`  
 where *your.server.name* is the name of the server where IBM Welcome Page is installed and *port* is the port number that was specified during installation.
3. To change EIM domain properties, you must log in as the application administrator.
4. You can change the following EIM domain properties:
  - **Name**
  - **Parent DN**
  - **Administrator DN:** Specify the distinguished name (DN) value of an administrator to the EIM repository.
  - **Administrator password:** Specify the password for the EIM administrator.
5. Click **Save Properties** or **Delete Properties**, depending on what you want to change.



## Add your aliases to user registries

After the EIM properties have been modified, you must use System i Navigator to set up and administer EIM domain servers. You must add aliases to user registries that are defined for the EIM domain. Aliases provide the information that applications need to map an abstract user registry to a system host name, port, and authentication method.

Perform the following steps to add an alias to set up the system user registry for business application users:

1. From System i Navigator, expand **Domain Management**.
2. Expand the name of the EIM domain you want to manage.
3. If necessary, enter the DN and password for your domain's administrator, and click **OK**.
4. Click **User Registries**. A list of registries appear in the right panel.
5. In the **Enterprise Identity Mapping tasks** panel, click **Add a new system registry**.

**Note:** If the task panel is not visible, go to the top menu, click **View**, and select **Taskpad**. There should now be a checkmark next to Taskpad, and the task area should be visible.

6. In the **Add System Registry** window, perform the following steps:
  - a. In the **Registry** field, specify a name for the new registry.
  - b. In the **Type** field, select **LDAP**.
  - c. In the **Alias** field, specify the host name and TCP/IP port number that the directory server uses and that the applications are configured to use. For example, if they are configured to use the directory server at server.rchland.ibm.com port 388, enter host=server.rchland.ibm.com, port=388 as the alias.

There are several properties that business applications observe in a user registry alias:

- **host** - This is the TCP/IP host name or IP address for this user registry. Business applications may use this value if they need to communicate with the system. For example, IBM Telephone Directory uses this value to validate user requests to add identity mappings (or associations) to their EIM identifier. There is no default value for this setting. For example, host=server.rchland.ibm.com.
- **protocol** - This is the protocol used to communicate with the system. Valid values are ldap and ftp where the default value is ldap. See **host** for details. For example, protocol=ftp.
- **port** - This is the TCP/IP port number used to communicate with the system. Valid values range between 1 and 65535. The default value is 389 if the ldap protocol is used, or 20 if the ftp protocol is used. See **host** for details. For example, port=388
- **os400-sys** - This is the os400-sys attribute value used to access OS/400 objects as entries within an LDAP-accessible directory tree. Business applications may use this value to access OS/400 user profiles that are projected as entries within a directory tree. This value is only used if the ldap protocol is used to communicate with an OS/400 system. The default value is the same as that specified for host (required). For example, os400-sys=system-A.rchland.ibm.com
- **readonly** - This indicates that the user registry is only to be used to read or obtain information. If specified, business applications may use or display identity mappings (or association) mapped to this user registry, but they may not add new identity mappings or remove/change any existing identity mapping. This setting is disabled by default. For example, readonly
- **Notes:**
  - Property names and values are not case sensitive.
  - If multiple properties are specified, they must be separated by a comma (',').
  - Properties may only be specified once, per alias. (No duplicates.)
  - Only one type IBS alias is allowed, per user registry.
  - Business applications look specifically for user registries with a type IBS alias. Those without a type IBS alias are ignored.

- Alias types are case sensitive. IBS must be specified with all uppercase letters.
- d. Under the **Address aliases** heading, in the **Type** field, specify **IBS** (and overwrite anything that may already be shown or selected).
- e. Click **Add**.
- f. Click **OK**.

## Add aliases to other system or application user registries

Perform the following steps to add an alias to set up other system or application user registries:

1. From System i Navigator, expand **Domain Management**.
2. Expand the name of the EIM domain you want to manage.
3. If necessary, enter the DN and password for your domain's administrator, and click **OK**.
4. Click **User Registries**. A list of registries appear in the right panel.
5. In the **Enterprise Identity Mapping tasks** panel, click **Add a new system registry** to add a new system user registry, or **Add a new application registry** to add a new application user registry.

**Note:** If the task panel is not visible, go to the top menu, click View, and select Taskpad. There should now be a checkmark next to Taskpad, and the task area should be visible.

6. In the **Add System Registry** window or **Add Application Registry** window, perform the following steps:
  - a. In the **Registry** field, specify a name for the new registry.
  - b. If you are using the **Add System Registry wizard**, skip to step 6c. If you are using the **Add Application Registry wizard**, in the **Parent registry** field, specify the name of the system user registry of which this application user registry is a subset.
  - c. In the **Type** field, select the type of user registry definition that you want to add. You may choose a predefined type, or enter a value that meets your needs.
  - d. In the **Alias** field, specify the properties that business applications must use in the event they need to communicate with the system. See explanation of alias properties for details.

There are several properties that applications observe in a user registry alias:

- **host** - This is the TCP/IP host name or IP address for this user registry. Business applications may use this value if they need to communicate with the system. For example, IBM Telephone Directory uses this value to validate user requests to add identity mappings (or associations) to their EIM identifier. There is no default value for this setting. For example, host=server.rchland.ibm.com.
- **protocol** - This is the protocol used to communicate with the system. Valid values are ldap and ftp where the default value is ldap. See **host** for details. For example, protocol=ftp
- **port** - This is the TCP/IP port number used to communicate with the system. Valid values range between 1 and 65535. The default value is 389 if the ldap protocol is used, or 20 if the ftp protocol is used. See **host** for details. For example, port=388
- **os400-sys** - This is the os400-sys attribute value used to access OS/400 objects as entries within an LDAP-accessible directory tree. Business applications may use this value to access OS/400 user profiles that are projected as entries within a directory tree. This value is only used if the ldap protocol is used to communicate with an OS/400 system. The default value is the same as that specified for host (required). For example, os400-sys=system-A.rchland.ibm.com
- **readonly** - This indicates that the user registry is only to be used to read or obtain information. If specified, business applications may use or display identity mappings (or association) mapped to this user registry, but they may not add new identity mappings or remove/change any existing identity mapping. This setting is disabled by default. For example, readonly.
- **Notes:**
  - Property names and values are not case sensitive.
  - If multiple properties are specified, they must be separated by a comma (',').

- Properties may only be specified once, per alias. (No duplicates.)
  - Only one type IBS alias is allowed, per user registry.
  - Business applications look specifically for user registries with a type IBS alias. Those without a type IBS alias are ignored.
  - Alias types are case sensitive. IBS must be specified with all uppercase letters.
- e. Under the **Address aliases** heading, in the **Type** field, specify **IBS** (and overwrite anything that may already be shown or selected).
  - f. Click **Add**.
  - g. Click **OK**.

You should now see your new registry in the list of system registries. This registry represents the directory server used by the applications. The alias you added to it allows the Web applications to identify it.

You may now add other registries that represent other servers. If you add a similar alias, the IBM Telephone Directory V5.2 application recognizes it and allows users to self-register their personal identities for those servers.

Currently, the IBM Telephone Directory V5.2 application is the only business application that uses EIM properties. It uses EIM properties to provide automatic EIM registration and self-management of user identities. See Set up EIM registration and identity mapping in the IBM Telephone Directory V5.2 topic for more information.

## Manage Sametime server properties

To change Sametime server properties, use the IBM Welcome Page V1.1 administrator pages.

Perform the following steps:

1. Access the IBM Welcome Page V1.1 administrator pages by entering the following URL in your Web browser:  
`http://your.server.name:port/ibm-bizApps/welcome/admin.do`  
 where *your.server.name* is the name of the application server where IBM Welcome Page V1.1 is installed and *port* is the port number that was specified during installation.
2. Click the **Sametime** tab.
3. You can change the following Sametime server property:
  - **Host name:** Specify the host name or address of the Sametime server.
4. Click **Save Properties**.

You can also delete Sametime properties from this administrator page.

## Manage STLinks properties

To change Sametime links (STLinks) properties, use the IBM Welcome Page V1.1 administrator pages.

Perform the following steps:

1. Access the IBM Welcome Page V1.1 administrator pages by entering the following URL in your Web browser:  
`http://your.server.name:port/ibm-bizApps/welcome/admin.do`  
 where *your.server.name* is the name of the application server where IBM Welcome Page V1.1 is installed and *port* is the port number that was specified during installation.
2. Click the **Sametime** tab.
3. You can change the following STLinks properties:

- **HTTP ports allowed:** Select either standard or SSL. Standard port is the standard TCP/IP port number that is used by the Sametime server. SSL port is the secure TCP/IP port number that is used by the Sametime server.
- **Runtime package URL:** Specify the URL to the STLinks runtime package directory on the Sametime server.

4. Click **Save Properties**.

You can also delete Sametime properties from this administrator page.

---

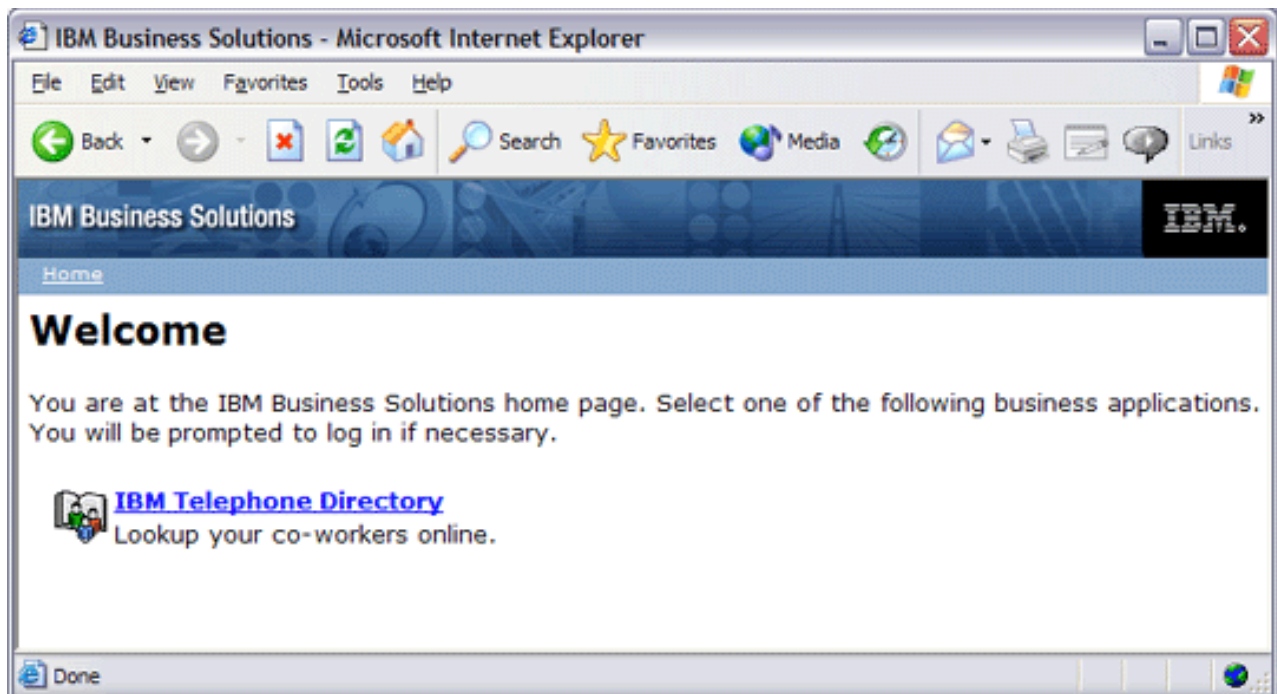
## Use IBM Welcome Page V1.1

Provides information about how to use the IBM Welcome Page V1.1 application, including how to access other associated business applications (such as IBM Telephone Directory V5.2).

To access the IBM Welcome Page V1.1 application, enter the following URL in your Web browser:

`http://your.server.name:port/ibm-bizApps/welcome/home.do`

where *your.server.name* is the name of the application server where IBM Welcome Page V1.1 is installed and *port* is the port number that was specified during installation.



Click the business applications that are configured for use with the IBM Welcome Page V1.1 application.

See Administer IBM Welcome Page V1.1 for more information about how to perform common administrator tasks for the application.

---

## Troubleshoot IBM Welcome Page V1.1

Provides troubleshooting information about the IBM Welcome Page V1.1 application.

Before you begin to troubleshoot problems with the IBM Welcome Page V1.1 application, answer the following questions to help solve some common problems when using the application:

- Are all of the product prerequisites installed? See Verify the prerequisites for more information.
- Is your LDAP server started?

- Is your IBM Welcome Page application started?
- Is your application server started?
- Is your HTTP server started?

Use the following information if you are still having problems with your application:

## Troubleshoot setup

Problem	Cause	Solution
Your installation failed with the following message: ldap_search: Insufficient access	You entered the wrong LDAP server administrator password.	Obtain the correct password or reset the password.
Your setup script failed with the following messages: ldap_search: No such object Error 32 verifying LDAP settings	There might be a problem with the base DN not existing on the LDAP server.	There is a problem with the base LDAP server configuration. See Troubleshooting Directory Server in the Directory Server (LDAP) topic for more information.
IBM Business Solutions (5722-BZ1) is not listed when the RSTLICPGM command is run for a preinstalled and preconfigured iSeries server	IBM Business Solutions is not installed on your server.	Reinstall both the IBM Telephone Directory V5.2 application and the IBM Welcome Page V1.1 application.

## Troubleshoot authentication

Problem	Cause	Solution
Log in fails	In the application, user IDs and passwords must contain characters that map to the job CCSID that is used by the HTTP server. Otherwise, authentication fails.	Make sure that your characters map to the job CCSID that is used by the HTTP server. For more information, see Notices and limitations in the IBM Telephone Directory V5.2 topic.
URL fails or the application does not appear	If you did not start the IBM Welcome Page application, the URL fails ( <i>http://your.server.name:port/ibm-bizApps/welcome/home.do</i> or <i>http://your.server.name:port/ibm-bizApps/welcome/admin.do</i> ).	Start the IBM Welcome Page application.

## Troubleshoot usage

Problem	Cause	Solution
Administration user ID confusion	It might be confusing as to which user ID you should type for authentication to the application when you (the administrator) need to update or register a user in a closed enrollment environment.	The default user ID is <b>Administrator</b> , and the password is set up during installation. Do not enter your personal user ID and password. Application user IDs are always viewable to everyone. If you do not know the user ID for an entry, use the application's search page to find the entry. The user ID is displayed under the picture.

Problem	Cause	Solution
Special characters (such as ", &, <, or >) not handled correctly	The IBM Welcome Page V1.1 application has been written to accept and handle all characters correctly, even those identified as special characters (or metacharacters) for HTML, JavaScript, and LDAP filters and attribute values.	<p>There are known cases when the IBM Welcome Page V1.1 application handles special characters for LDAP attribute values correctly, according to the RFC 2253 standard. However, the iSeries Directory Server (LDAP) directory server does not fully support the standard. For these cases, there is nothing that can be done other than to avoid the use of such characters.</p> <p>The quote (") character is an example of this problem. The RFC 2253 standard specifies that the character must be escaped by preceding it with a backslash (\) to be accepted as a literal character in an LDAP attribute value. Since the current version of iSeries Directory Server (LDAP) does not fully support RFC 2253, the server saves both the backslash character as well as the quote character.</p>

## Error logging and debugging

- **Error logs**

The application server has a variety of logs to which messages are written. For example, system message, which can be written by any application server component or application are written to general purpose logs such as the JAVA Virtual Machine (JVM) logs and the IBM Service logs. Other logs are very specific in nature and are scoped to a particular component or activity. For example, the HTTP Server plug-in maintains a component-specific plug-in log.

The general purpose logs, such as JVM and IBM Service, are used to monitor the health of the application server and assist in troubleshooting. Troubleshooting for specific components might require additional log analysis, such as component or product specific log files.

- **Trace statements**

Application trace statements can be enabled for the purpose of debugging problems. If problems persist, and you must call IBM Service for help, one of the first thing they might ask you for is a copy of the application's trace output. Trace statements are enabled by adding a line to the application's configuration file and restarting the application.

The application will read the new configuration when it is started. Application trace statement will be enabled at that time. When enabled, trace statements are written to the server's SystemOut.log file.

- **LDAP and HTTP server trace**

See the following information for details on LDAP and HTTP server trace:








- Troubleshooting Directory Server
- Troubleshooting HTTP server

## | General troubleshooting information

| These resources provide general troubleshooting assistance.

| • For WebSphere Application Server - Express V6, see the associated Troubleshooting  topic.



- | • For WebSphere Application Server - Express (i5/OS) V6.1, see the associated Troubleshooting  topic.
- | • For WebSphere Application Server V6, see the associated Troubleshooting  topic.
- | • For WebSphere Application Server (i5/OS) V6.1, see the associated Troubleshooting  topic.
- | • Read the WebSphere Application Server - Express V6 Release Notes  (Same as WebSphere Application Server V6 Release Notes below)
- | • Read the WebSphere Application Server - Express (i5/OS) V6.1 Release Notes 
- | • Read the WebSphere Application Server V6 Release Notes 
- | • Read the WebSphere Application Server (i5/OS) V6.1 Release Notes 





---

## Appendix. Notices

This information was developed for products and services offered in the U.S.A.

IBM may not offer the products, services, or features discussed in this document in other countries. Consult your local IBM representative for information on the products and services currently available in your area. Any reference to an IBM product, program, or service is not intended to state or imply that only that IBM product, program, or service may be used. Any functionally equivalent product, program, or service that does not infringe any IBM intellectual property right may be used instead. However, it is the user's responsibility to evaluate and verify the operation of any non-IBM product, program, or service.

IBM may have patents or pending patent applications covering subject matter described in this document. The furnishing of this document does not grant you any license to these patents. You can send license inquiries, in writing, to:

IBM Director of Licensing  
IBM Corporation  
North Castle Drive  
Armonk, NY 10504-1785  
U.S.A.

For license inquiries regarding double-byte (DBCS) information, contact the IBM Intellectual Property Department in your country or send inquiries, in writing, to:

IBM World Trade Asia Corporation  
Licensing  
2-31 Roppongi 3-chome, Minato-ku  
Tokyo 106-0032, Japan

**The following paragraph does not apply to the United Kingdom or any other country where such provisions are inconsistent with local law:** INTERNATIONAL BUSINESS MACHINES CORPORATION PROVIDES THIS PUBLICATION "AS IS" WITHOUT WARRANTY OF ANY KIND, EITHER EXPRESS OR IMPLIED, INCLUDING, BUT NOT LIMITED TO, THE IMPLIED WARRANTIES OF NON-INFRINGEMENT, MERCHANTABILITY OR FITNESS FOR A PARTICULAR PURPOSE. Some states do not allow disclaimer of express or implied warranties in certain transactions, therefore, this statement may not apply to you.

This information could include technical inaccuracies or typographical errors. Changes are periodically made to the information herein; these changes will be incorporated in new editions of the publication. IBM may make improvements and/or changes in the product(s) and/or the program(s) described in this publication at any time without notice.

Any references in this information to non-IBM Web sites are provided for convenience only and do not in any manner serve as an endorsement of those Web sites. The materials at those Web sites are not part of the materials for this IBM product and use of those Web sites is at your own risk.

IBM may use or distribute any of the information you supply in any way it believes appropriate without incurring any obligation to you.

Licensees of this program who wish to have information about it for the purpose of enabling: (i) the exchange of information between independently created programs and other programs (including this one) and (ii) the mutual use of the information which has been exchanged, should contact:

IBM Corporation

Software Interoperability Coordinator, Department YBWA  
3605 Highway 52 N  
Rochester, MN 55901  
U.S.A.

Such information may be available, subject to appropriate terms and conditions, including in some cases, payment of a fee.

The licensed program described in this document and all licensed material available for it are provided by IBM under terms of the IBM Customer Agreement, IBM International Program License Agreement, IBM License Agreement for Machine Code, or any equivalent agreement between us.

Any performance data contained herein was determined in a controlled environment. Therefore, the results obtained in other operating environments may vary significantly. Some measurements may have been made on development-level systems and there is no guarantee that these measurements will be the same on generally available systems. Furthermore, some measurements may have been estimated through extrapolation. Actual results may vary. Users of this document should verify the applicable data for their specific environment.

Information concerning non-IBM products was obtained from the suppliers of those products, their published announcements or other publicly available sources. IBM has not tested those products and cannot confirm the accuracy of performance, compatibility or any other claims related to non-IBM products. Questions on the capabilities of non-IBM products should be addressed to the suppliers of those products.

All statements regarding IBM's future direction or intent are subject to change or withdrawal without notice, and represent goals and objectives only.

This information contains examples of data and reports used in daily business operations. To illustrate them as completely as possible, the examples include the names of individuals, companies, brands, and products. All of these names are fictitious and any similarity to the names and addresses used by an actual business enterprise is entirely coincidental.

#### COPYRIGHT LICENSE:

This information contains sample application programs in source language, which illustrate programming techniques on various operating platforms. You may copy, modify, and distribute these sample programs in any form without payment to IBM, for the purposes of developing, using, marketing or distributing application programs conforming to the application programming interface for the operating platform for which the sample programs are written. These examples have not been thoroughly tested under all conditions. IBM, therefore, cannot guarantee or imply reliability, serviceability, or function of these programs.

Each copy or any portion of these sample programs or any derivative work, must include a copyright notice as follows:

© (your company name) (year). Portions of this code are derived from IBM Corp. Sample Programs. © Copyright IBM Corp. \_enter the year or years\_. All rights reserved.

If you are viewing this information softcopy, the photographs and color illustrations may not appear.

---

## Programming interface information

This IBM Welcome Page V1.1 publication documents intended Programming Interfaces that allow the customer to write programs to obtain the services of IBM Business Solutions..

---

## Trademarks

The following terms are trademarks of International Business Machines Corporation in the United States, other countries, or both:

Domino  
i5/OS  
iSeries  
IBM  
IBM (logo)  
Lotus  
OS/400  
Redbooks  
Sametime  
System i  
Tivoli  
WebSphere

Adobe, the Adobe logo, PostScript, and the PostScript logo are either registered trademarks or trademarks of Adobe Systems Incorporated in the United States, and/or other countries.

Java and all Java-based trademarks are trademarks of Sun Microsystems, Inc. in the United States, other countries, or both.

Other company, product, or service names may be trademarks or service marks of others.

---

## Terms and conditions

Permissions for the use of these publications is granted subject to the following terms and conditions.

**Personal Use:** You may reproduce these publications for your personal, noncommercial use provided that all proprietary notices are preserved. You may not distribute, display or make derivative works of these publications, or any portion thereof, without the express consent of IBM.

**Commercial Use:** You may reproduce, distribute and display these publications solely within your enterprise provided that all proprietary notices are preserved. You may not make derivative works of these publications, or reproduce, distribute or display these publications or any portion thereof outside your enterprise, without the express consent of IBM.

Except as expressly granted in this permission, no other permissions, licenses or rights are granted, either express or implied, to the publications or any information, data, software or other intellectual property contained therein.

IBM reserves the right to withdraw the permissions granted herein whenever, in its discretion, the use of the publications is detrimental to its interest or, as determined by IBM, the above instructions are not being properly followed.

You may not download, export or re-export this information except in full compliance with all applicable laws and regulations, including all United States export laws and regulations.

IBM MAKES NO GUARANTEE ABOUT THE CONTENT OF THESE PUBLICATIONS. THE PUBLICATIONS ARE PROVIDED "AS-IS" AND WITHOUT WARRANTY OF ANY KIND, EITHER EXPRESSED OR IMPLIED, INCLUDING BUT NOT LIMITED TO IMPLIED WARRANTIES OF MERCHANTABILITY, NON-INFRINGEMENT, AND FITNESS FOR A PARTICULAR PURPOSE.







Printed in USA