

\*For units with Multi-Path feature this part is called Serial Diagnostic Port Board.

© Copyright International Business Machines Corporation 2003. All rights reserved. US Government Users Restricted Rights – Use, duplication or disclosure restricted by GSA ADP Schedule Contract with IBM Corp.

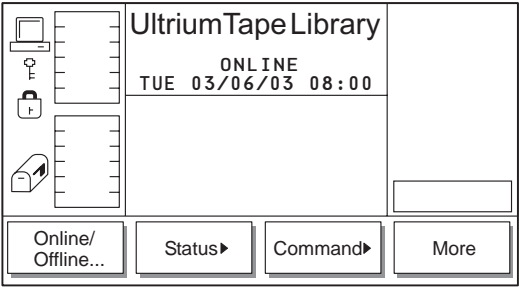
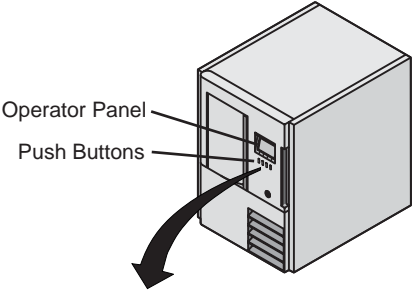
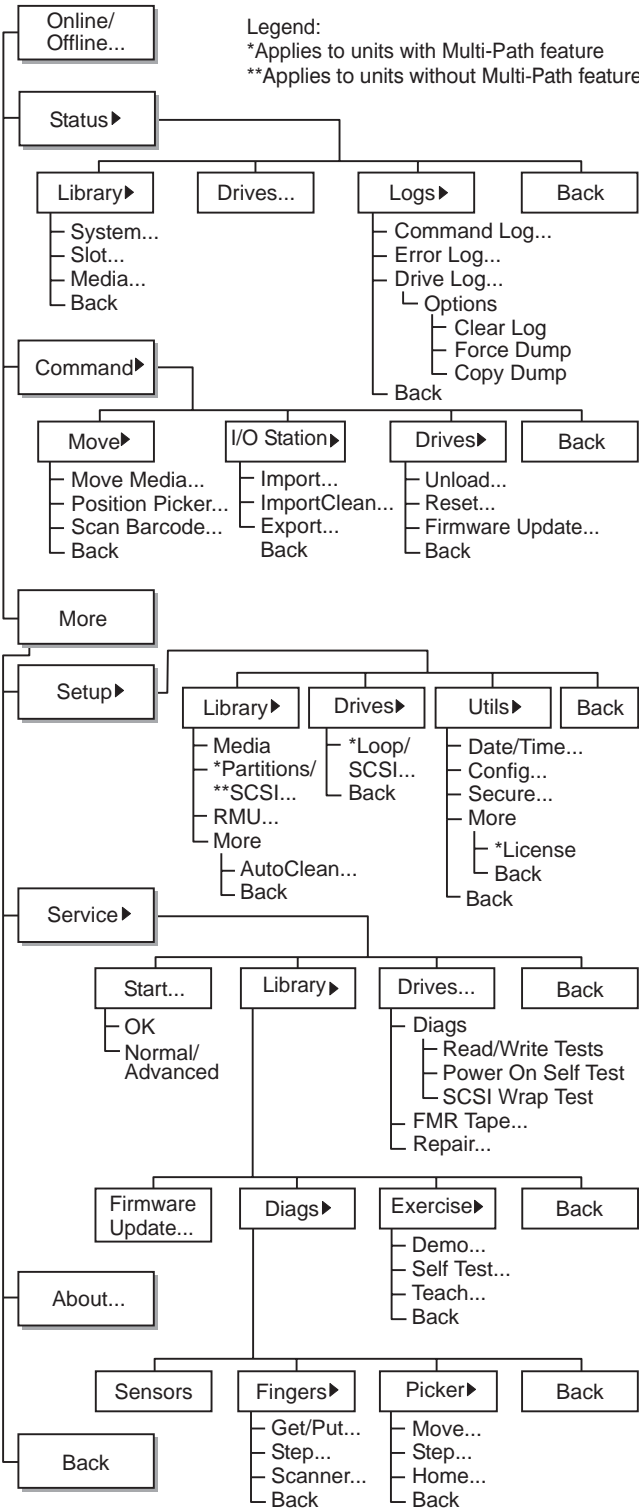
GX35-5057-04



18P8011

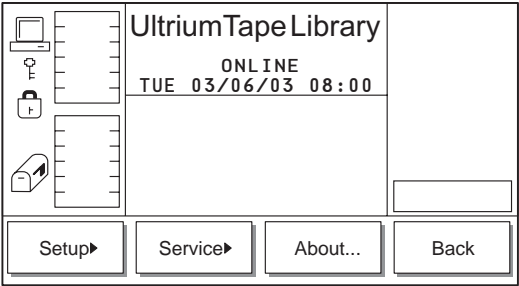


## Operator Panel Menus



### Main Menu (initial screen)

To access the main menu alternate screen, push the button below the More softkey.



### Main Menu (alternate screen)



## Cartridge Types

Note: All cartridges used in the library must have a bar code label.

P/N 19P5887	IBM TotalStorage Ultrium 200 GB Data Cartridge (with bar code label)
P/N 35L2086	IBM TotalStorage LTO Ultrium Cleaning Cartridge (without bar code label)
*See Note below	IBM TotalStorage Ultrium 100 GB Data Cartridge (with bar code label)
P/N 35L2087	IBM TotalStorage LTO Ultrium Cleaning Cartridge (with bar code label)

\*Note: Order as Model Type 3589 Model 002 from Business Partner or IBM Representative



For questions or additional information, see the IBM TotalStorage Ultrium Scalable Tape Library 3583 Setup and Operator Guide. For the latest publications, visit the Web at <http://www.ibm.com/storage/lto>

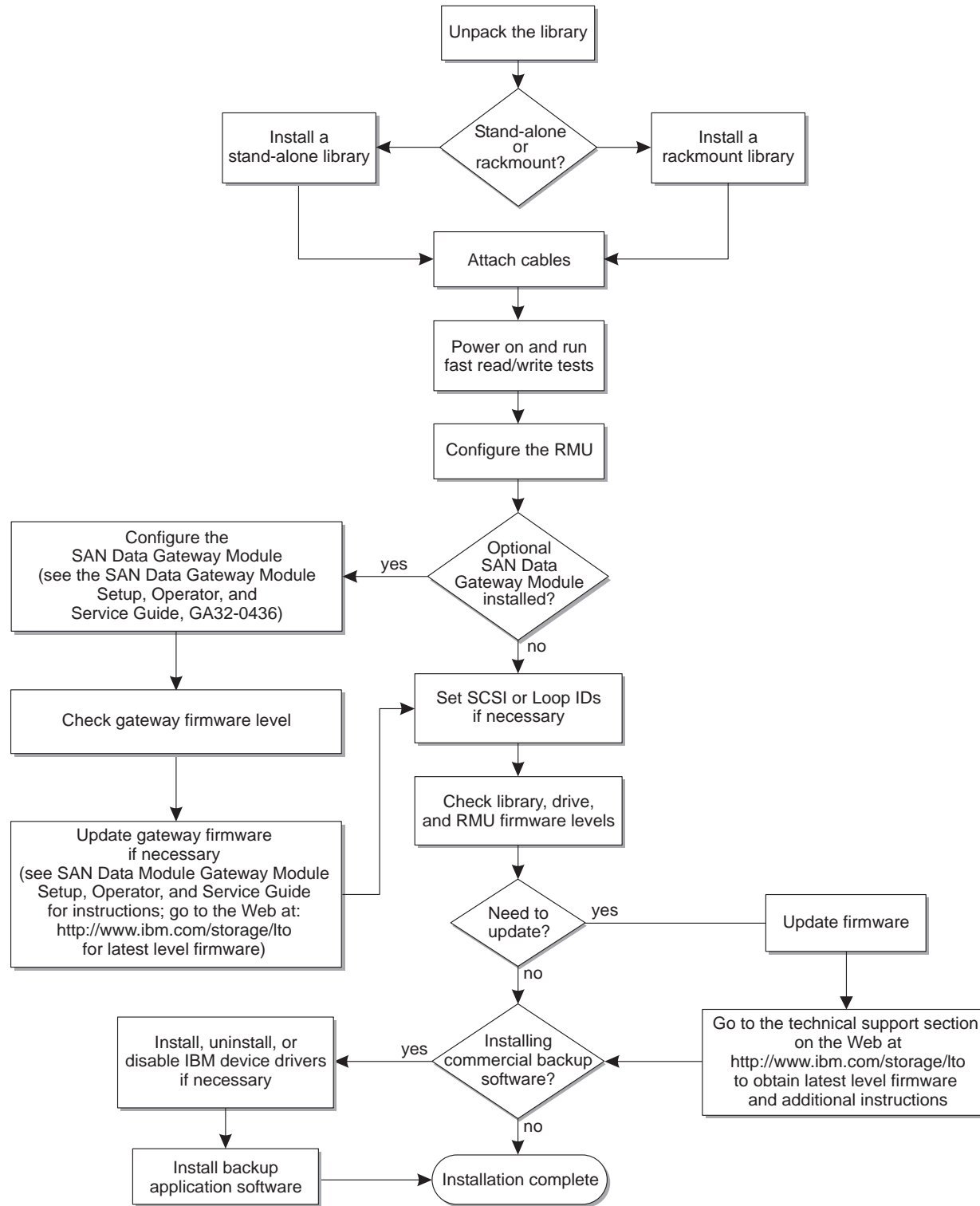
IBM TotalStorage  
Ultrium Scalable  
Tape Library 3583



## Quick Reference



## Installation Overview



## Installation Procedure

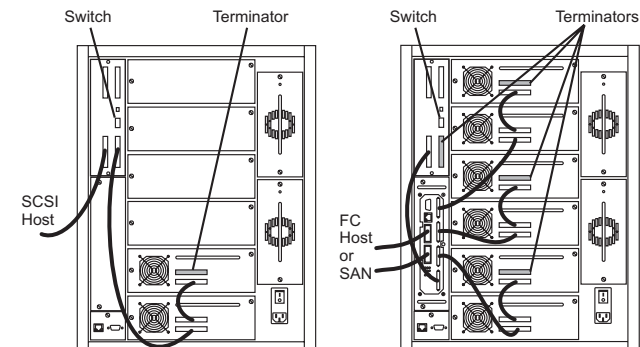
- Unpack and position the library. Ensure power is accessible.
- If installing the library in a rack go to the 3583 Ultrium Scalable Tape Library Setup and Operator Guide for instructions. If installing a stand-alone library continue with these instructions.
- Lock the two front casters in place by turning the latch on the caster counterclockwise.
- Using the key (taped to the back of the library), unlock and open the front door.
- Remove the band that secures the picker assembly to the frame.
- Place a data cartridge (scratch cartridge) in the top slot of the I/O station. Cartridges must have a bar code label.
- Close the front door securely. The library will not operate properly if the door is open.
- If you are installing a standard SCSI library:
  - Attach the SCSI cable from the host to the library.
  - Attach SCSI cables between drives.
 (See the SCSI cabling diagram for examples)
- If you are installing a library that has an optional SAN data gateway module:
  - Attach the fiber optic cable from the host to the library.
  - Attach SCSI cables from the SAN Data Gateway Module to the library and the drives.
 (See the Fiber/SCSI cabling diagram for examples)
- If you are installing a library with the Multi-Path feature (with SCSI or Fiber Channel drives):
  - Attach cables (SCSI or Fibre) from the host to the drive (See the Fiber/SCSI cabling diagram for examples)
- Install the SCSI terminators into SCSI devices.
- If your library does not have the Multi-Path feature, set the LVD/HVD switch on the host interface board (SCSI) for the SCSI type that you are using (up for HVD, down for LVD). If the library has an optional SAN Data Gateway Module the switch has to be set to LVD.
- Plug the power cord into the power receptacle on the ac input power module, and the other end into a grounded electrical outlet.
- Push the I on the main power switch to turn the power on. The library firmware will initialize and begin the inventory/teach process.
- When the Main Menu displays on the operator panel, use the push buttons to put the library in the Offline state (Online/Offline → OK).
- Run the FAST Read/Write Test. Select More → Service → Drives → OK or Change Drive → Diags → OK → OK. Run this test for each drive that is installed in the library.
- Configure the remote management unit (RMU) for use:
  - Select More → Setup → Library → RMU. The RMU dialog displays.
  - Use the Up or Down softkeys to enter the internet protocol (IP) address, subnet address, gateway, and name (hostname). Select Next to advance to the next field.
  - Select OK to accept the settings and return to the library submenu.
  - Select Back → Back to return to the Main Menu.
  - Attach an Ethernet cable with RJ-45 connectors to the RMU and an Ethernet hub that is attached to a computer. Use a Web browser and type in the IP address or the hostname, theTotalStorage Specialist Home page displays.

- If the optional SAN Data Gateway Module is installed, refer to the SAN Data Gateway Module Setup, Operator, and Service Guide to configure the gateway, verify firmware levels, and update firmware if necessary.
- If you do not have the Multi-Path feature, set the library SCSI ID. Select More → Setup → Library → SCSI → UP or Down → Next → OK.
 

Note: The default settings for the SCSI IDs are 6 for the library and 0–5 for the drives. Valid SCSI IDs are 0–7 for the library and 0–15 for the drives.
- Set the SCSI ID or Loop ID for each drive that is installed, if necessary. Select More → Setup → Drives → SCSI → OK or Change Drive → Up or Down → Next → OK.
- Cycle power to the library (push the O to turn the power off, and then push the I to turn the power on again).
- Put the library in the Online state. Select Online/Offline → OK.
- Verify firmware levels for the library, the drives, and the RMU. Refer to the IBM TotalStorage 3583 Ultrium Scalable Tape Library Setup and Operator Guide or visit the Web at <http://www.ibm.com/storage/ltc>.
- Update firmware for the library, drives, or RMU if necessary.
- Refer to your host and application software manuals to configure the library for use.

## Cabling

### Examples of SCSI Configurations without Multi-Path



### Examples of Fiber/SCSI Configurations with Multi-Path

