

CentOS 6.5 Install for IPCR

Download path for installation file

IPCR employs CentOS 6.5 Linux provided by Red Hat and others. A copy of the Linux OS can be obtained from the below link

Link1 : <http://vault.centos.org/6.5/isos/i386/>

Link2 : <ftp://bay.uchicago.edu/centos-vault/6.5/isos/i386/>

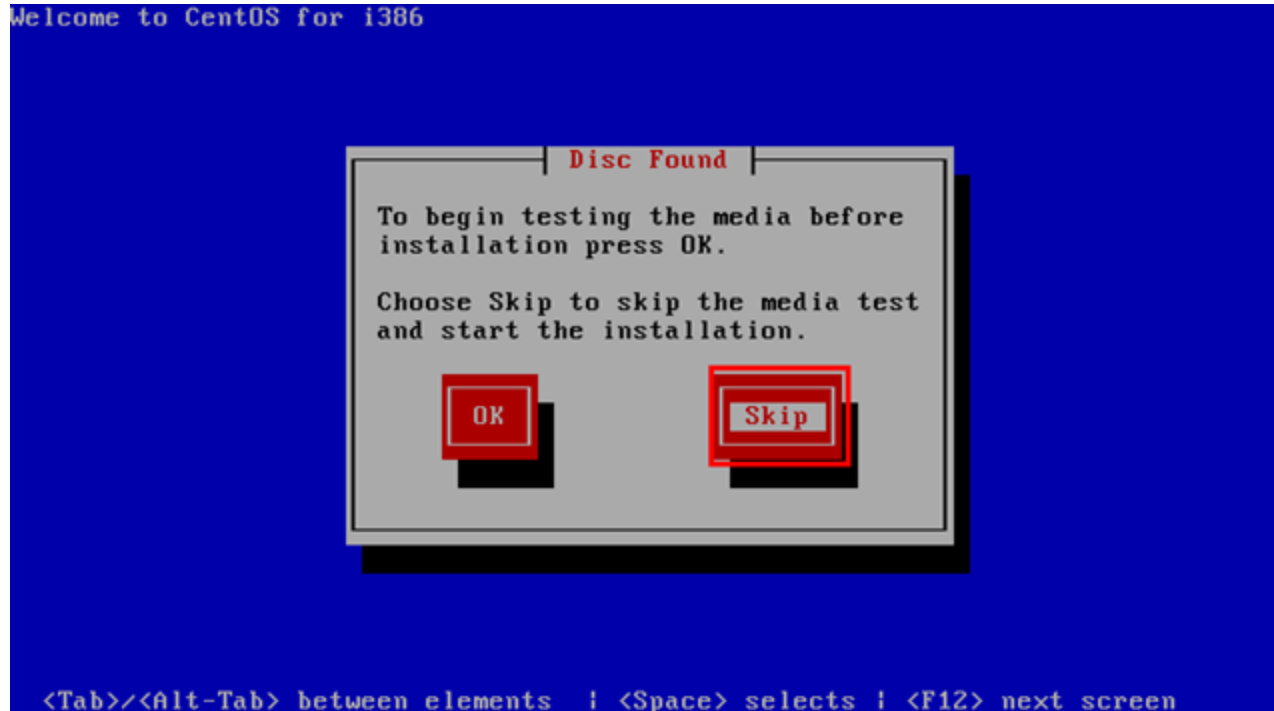
Download file : CentOS-6.5-i386-bin-DVD1.iso

CentOS 6.5 Install for IPCR



Select the “Install system with basic video drive”

CentOS 6.5 Install for IPCR



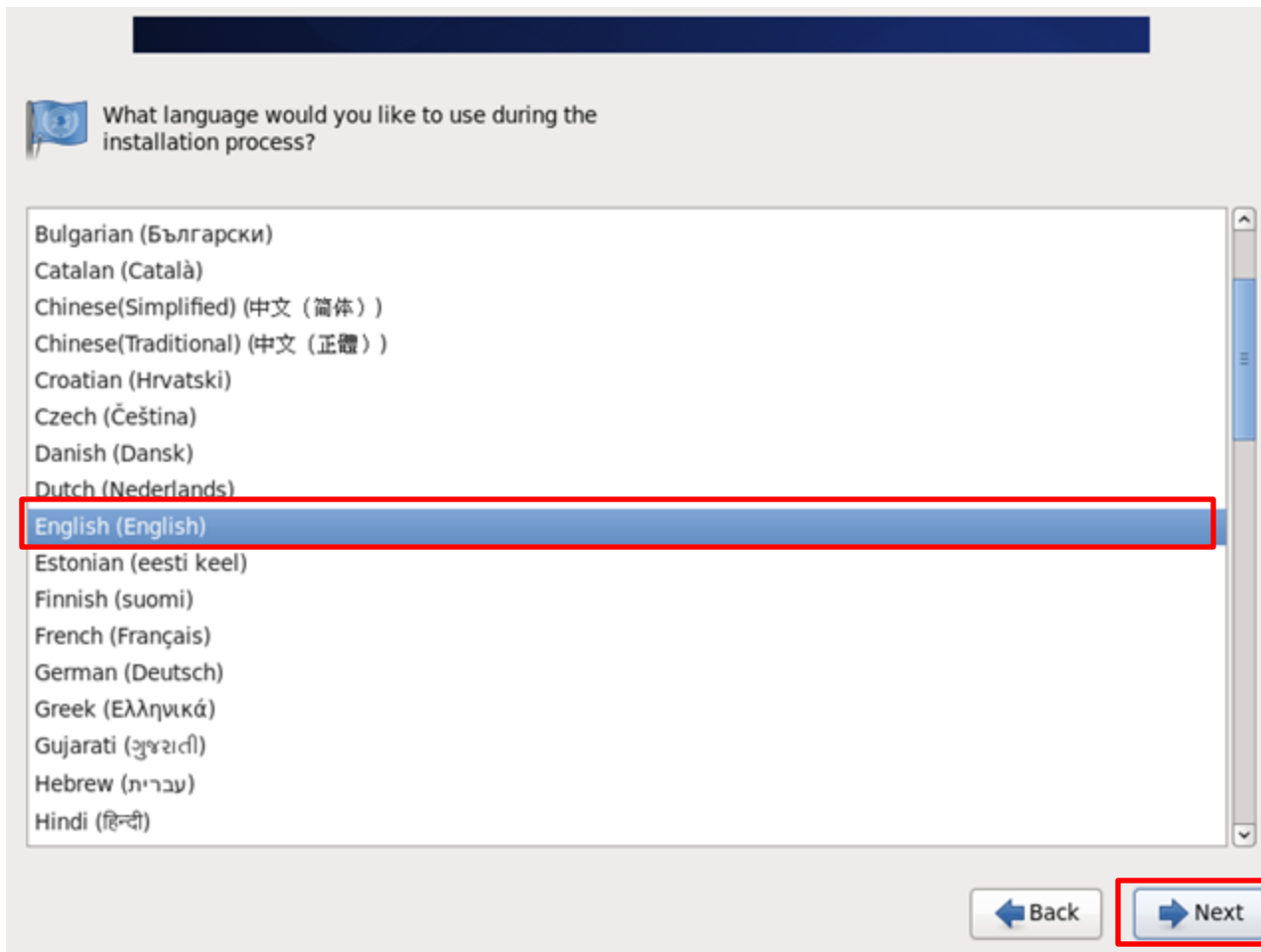
Click the "Skip"

CentOS 6.5 Install for IPCR



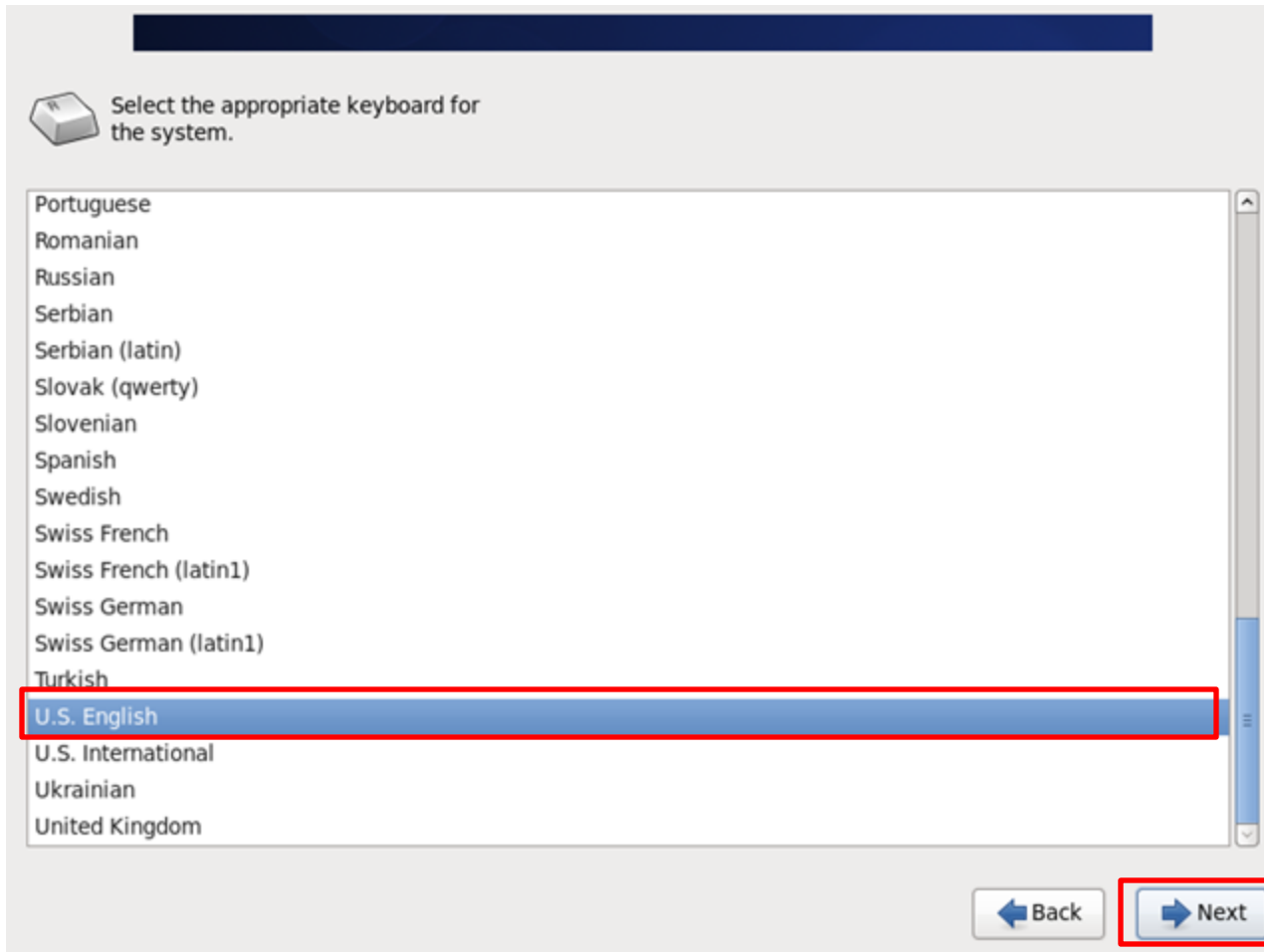
Click the "Next"

CentOS 6.5 Install for IPCR



Select the “English(English)”
Click the “Next”

CentOS 6.5 Install for IPCR



Select the “U.S. English”
Click the “Next”

CentOS 6.5 Install for IPCR

What type of devices will your installation involve?

Basic Storage Devices

Installs or upgrades to typical types of storage devices. If you're not sure which option is right for you, this is probably it.

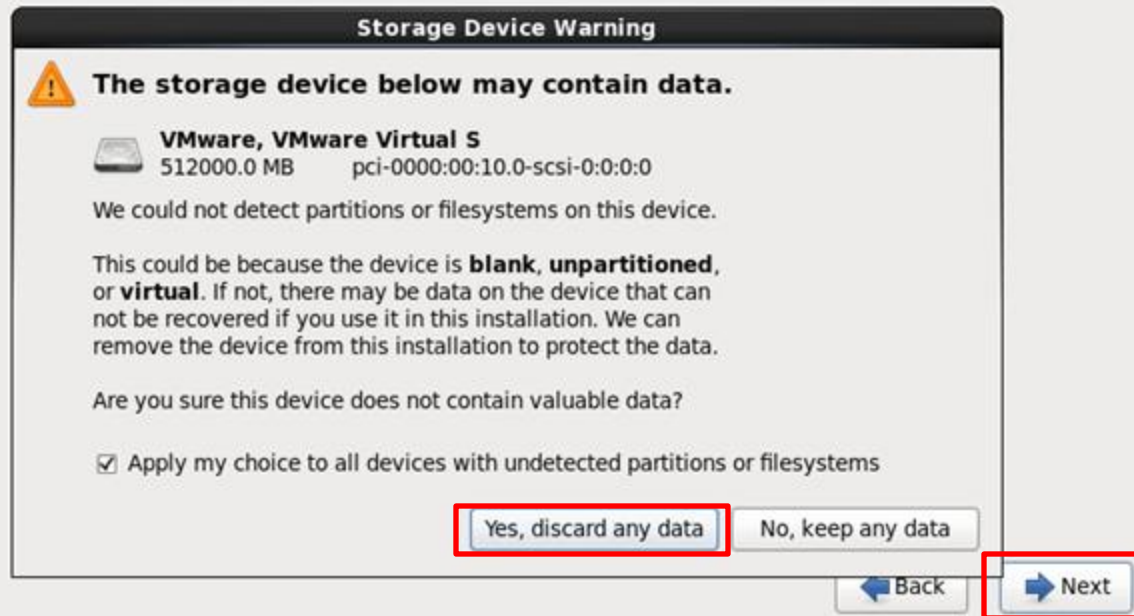
Specialized Storage Devices

Installs or upgrades to enterprise devices such as Storage Area Networks (SANs). This option will allow you to add FCoE / iSCSI / zFCP disks and to filter out devices the installer should ignore.

[← Back](#) [Next →](#)

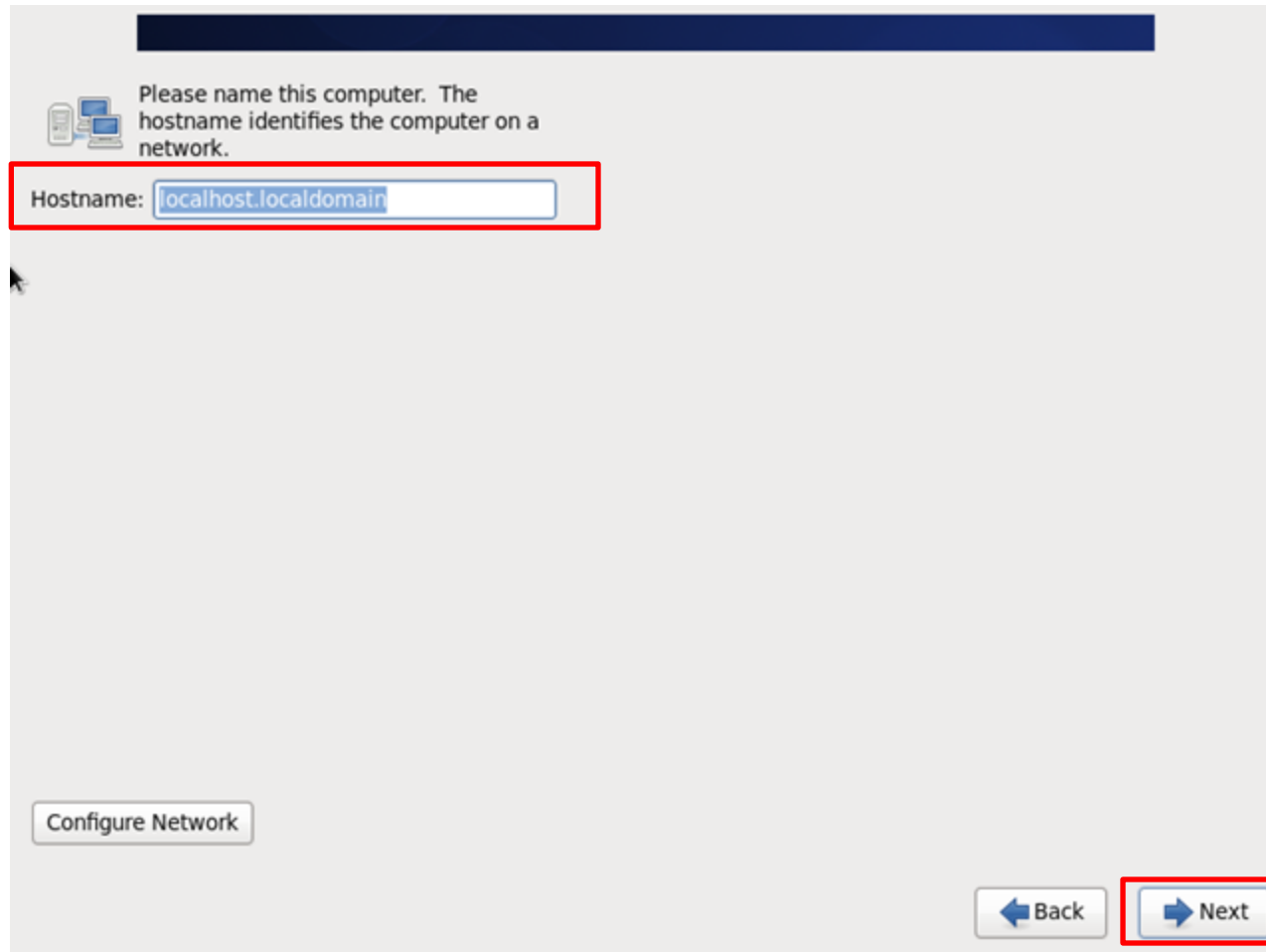
Select the “Basic Storage Devices”
Click the “Next”

CentOS 6.5 Install for IPCR



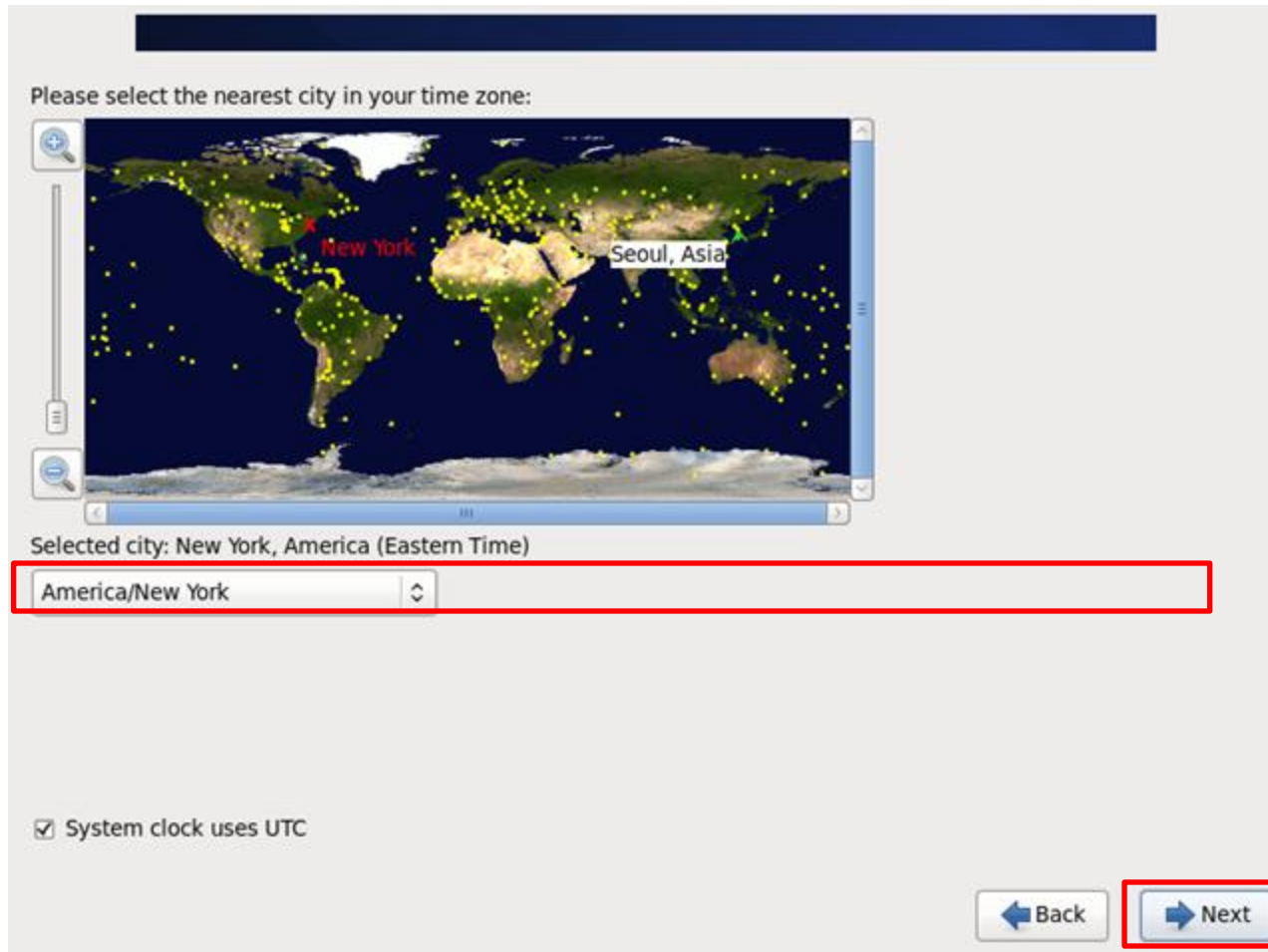
Select the “Yes, discard any data”
Click the “Next”

CentOS 6.5 Install for IPCR



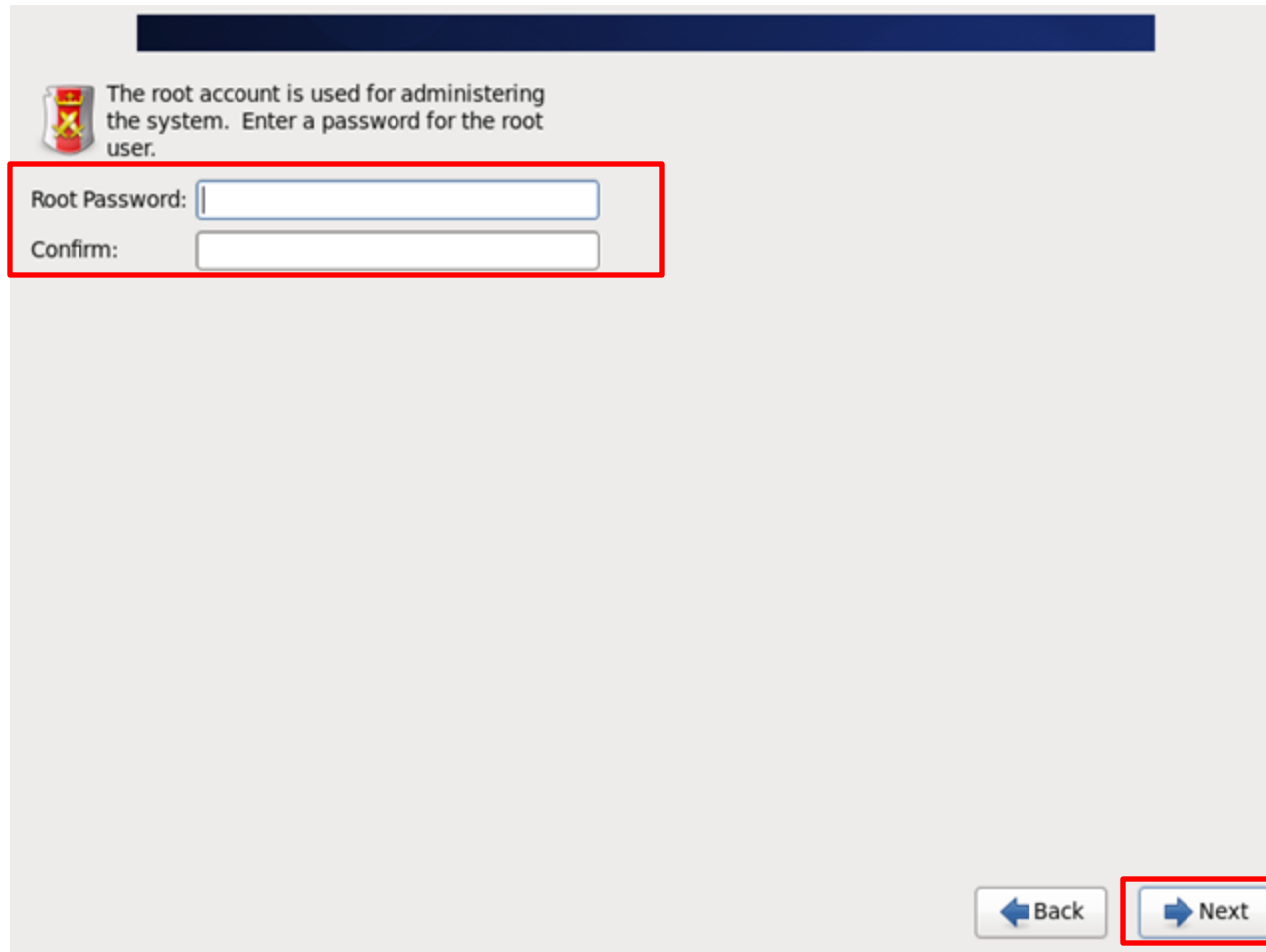
Hostname fill
Click the "Next"

CentOS 6.5 Install for IPCR



Select the "Time Zone"
Click the "Next"

CentOS 6.5 Install for IPCR



The root account is used for administering the system. Enter a password for the root user.

Root Password:

Confirm:

Detailed description: This is a screenshot of the CentOS 6.5 installation process. At the top, there is a dark blue header bar. Below it, a message explains the importance of the root account password. Two password input fields are shown, one for the root password and one for confirmation. At the bottom right, there are two navigation buttons: 'Back' and 'Next'. Red boxes highlight the password input fields and the 'Next' button.

Enter the "Password"
Click the "Next"

CentOS 6.5 Install for IPCR

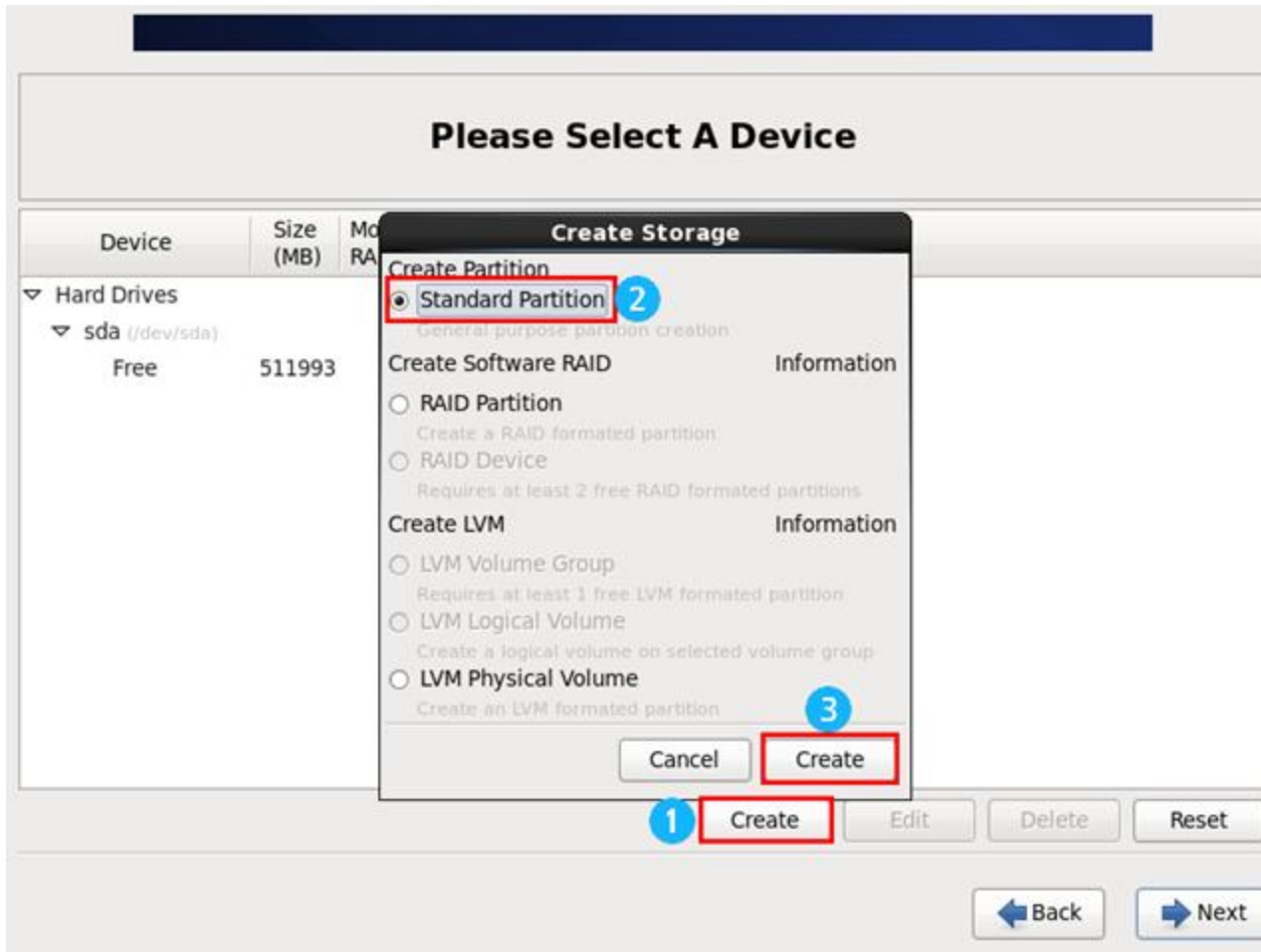
Which type of installation would you like?

- Use All Space**
Removes all partitions on the selected device(s). This includes partitions created by other operating systems.
Tip: This option will remove data from the selected device(s). Make sure you have backups.
- Replace Existing Linux System(s)**
Removes only Linux partitions (created from a previous Linux installation). This does not remove other partitions you may have on your storage device(s) (such as VFAT or FAT32).
Tip: This option will remove data from the selected device(s). Make sure you have backups.
- Shrink Current System**
Shrinks existing partitions to create free space for the default layout.
- Use Free Space**
Retains your current data and partitions and uses only the unpartitioned space on the selected device (s), assuming you have enough free space available.
- Create Custom Layout**
Manually create your own custom layout on the selected device(s) using our partitioning tool.

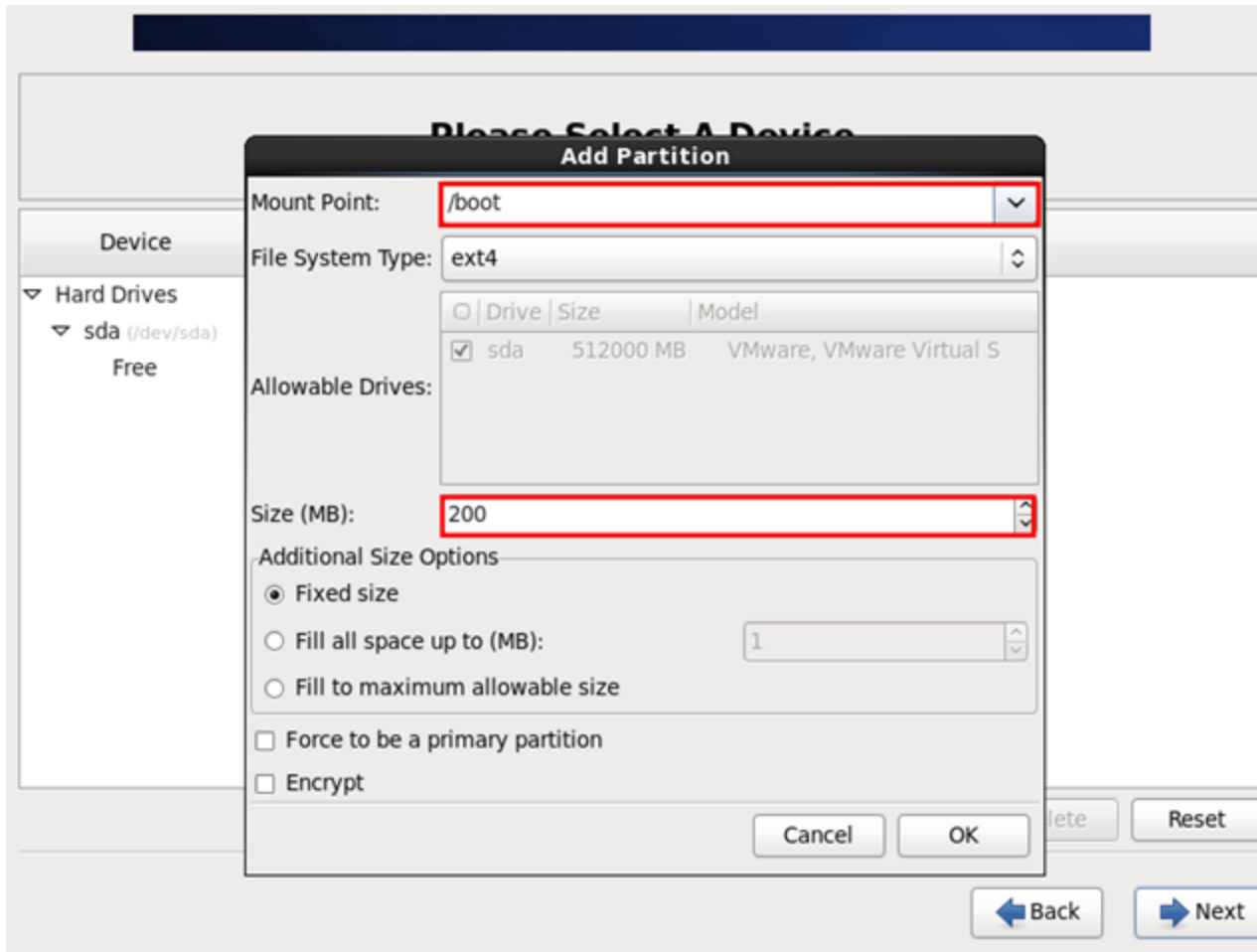
Encrypt system
 Review and modify partitioning layout

Select the "Create custom layout"
Click the "Next"

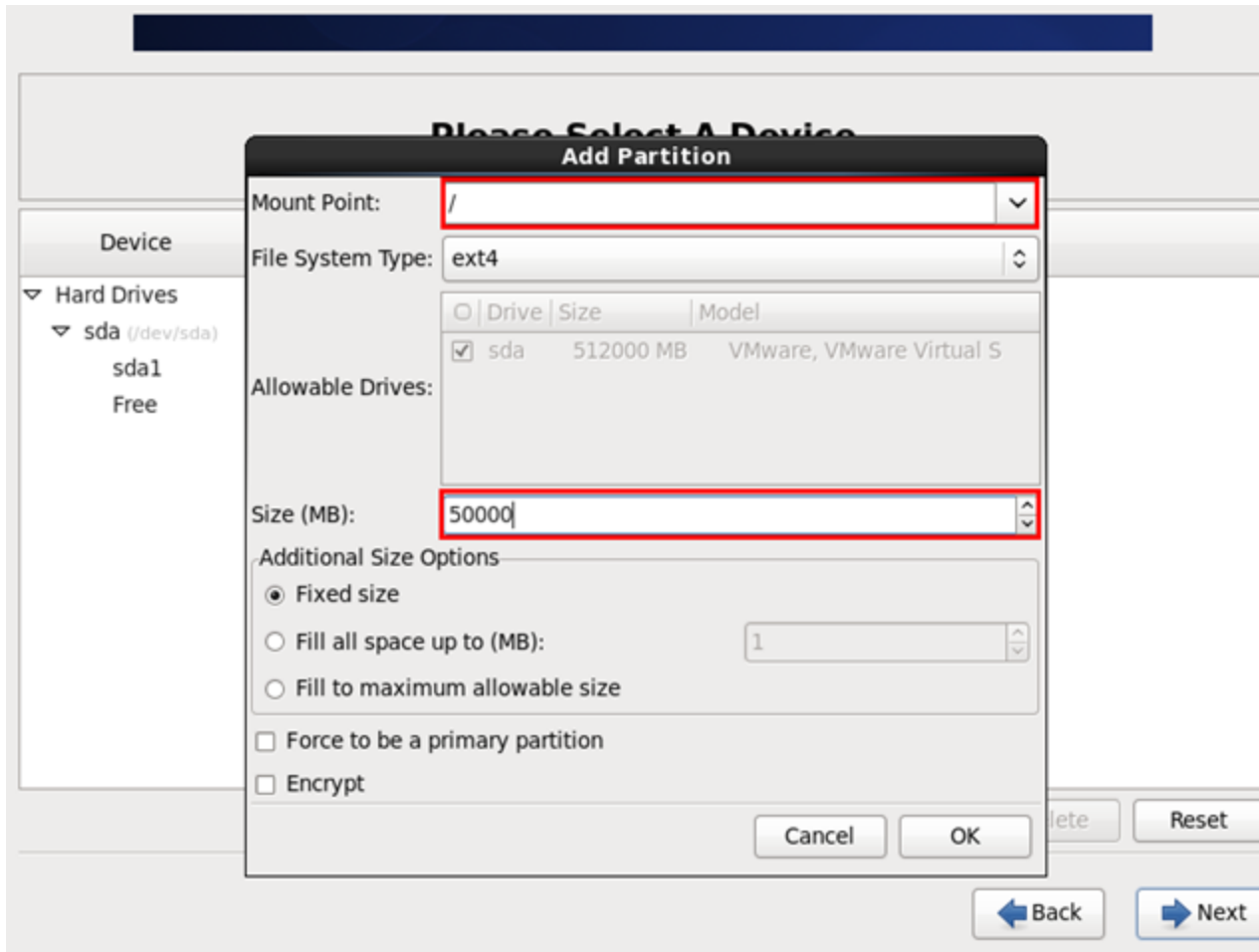
CentOS 6.5 Install for IPCR



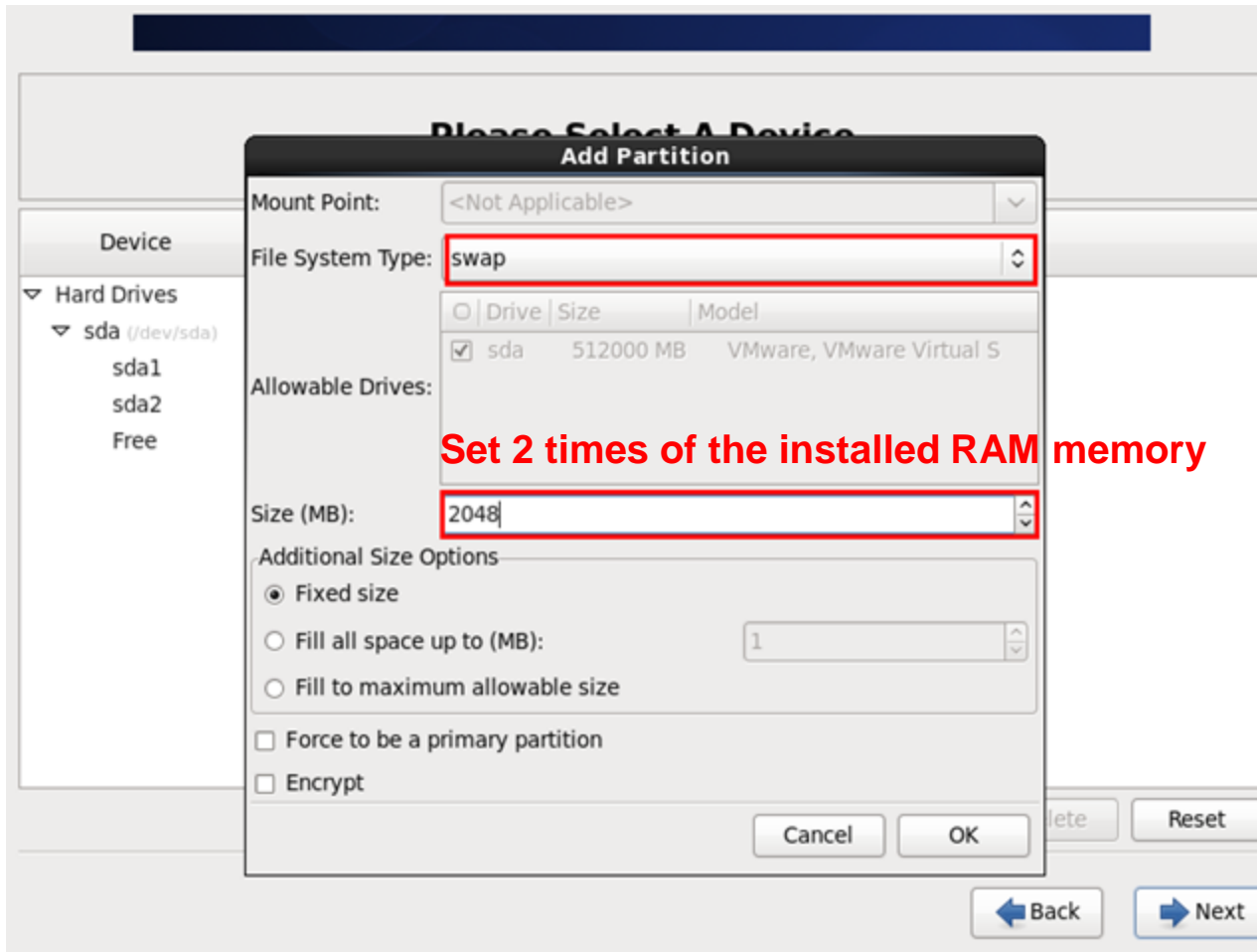
CentOS 6.5 Install for IPCR



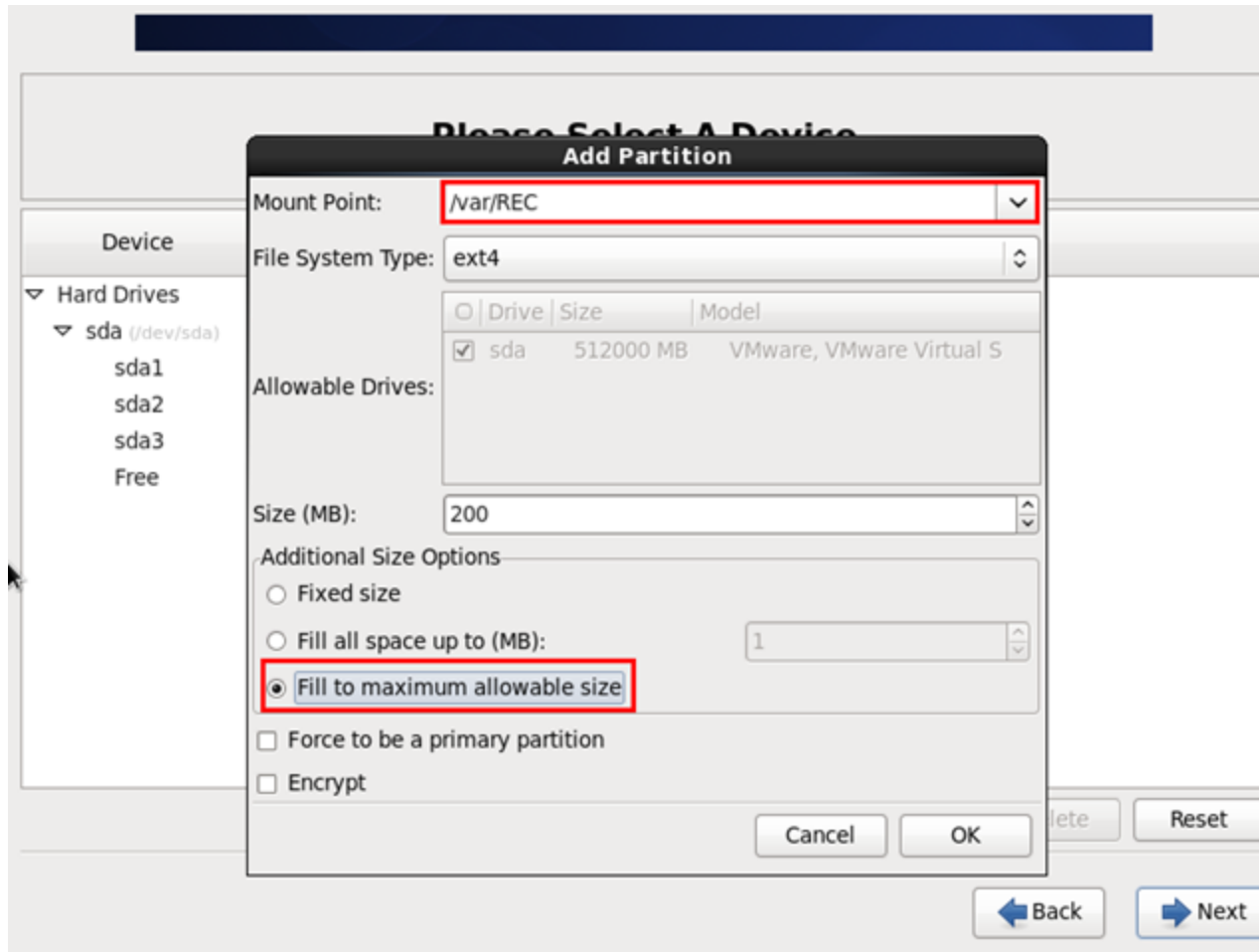
CentOS 6.5 Install for IPCR



CentOS 6.5 Install for IPCR



CentOS 6.5 Install for IPCR



CentOS 6.5 Install for IPCR

Please Select A Device

Device	Size (MB)	Mount Point/ RAID/Volume	Type	Format
▼ Hard Drives				
▼ sda (/dev/sda)				
sda1	200	/boot	ext4	✓
sda2	50000	/	ext4	✓
sda3	2048		swap	✓
▼ sda4				
sda5	459750	/var/REC	ext4	✓

CentOS 6.5 Install for IPCR

Install boot loader on /dev/sda.

Use a boot loader password

Boot loader operating system list

Default	Label	Device
<input checked="" type="radio"/>	CentOS	/dev/sda2

CentOS 6.5 Install for IPCR

The default installation of CentOS is a minimum install. You can optionally select a different set of software now.

- Desktop
- Minimal Desktop
- Minimal
- Basic Server
- Database Server
- Web Server
- Virtual Host
- Software Development Workstation

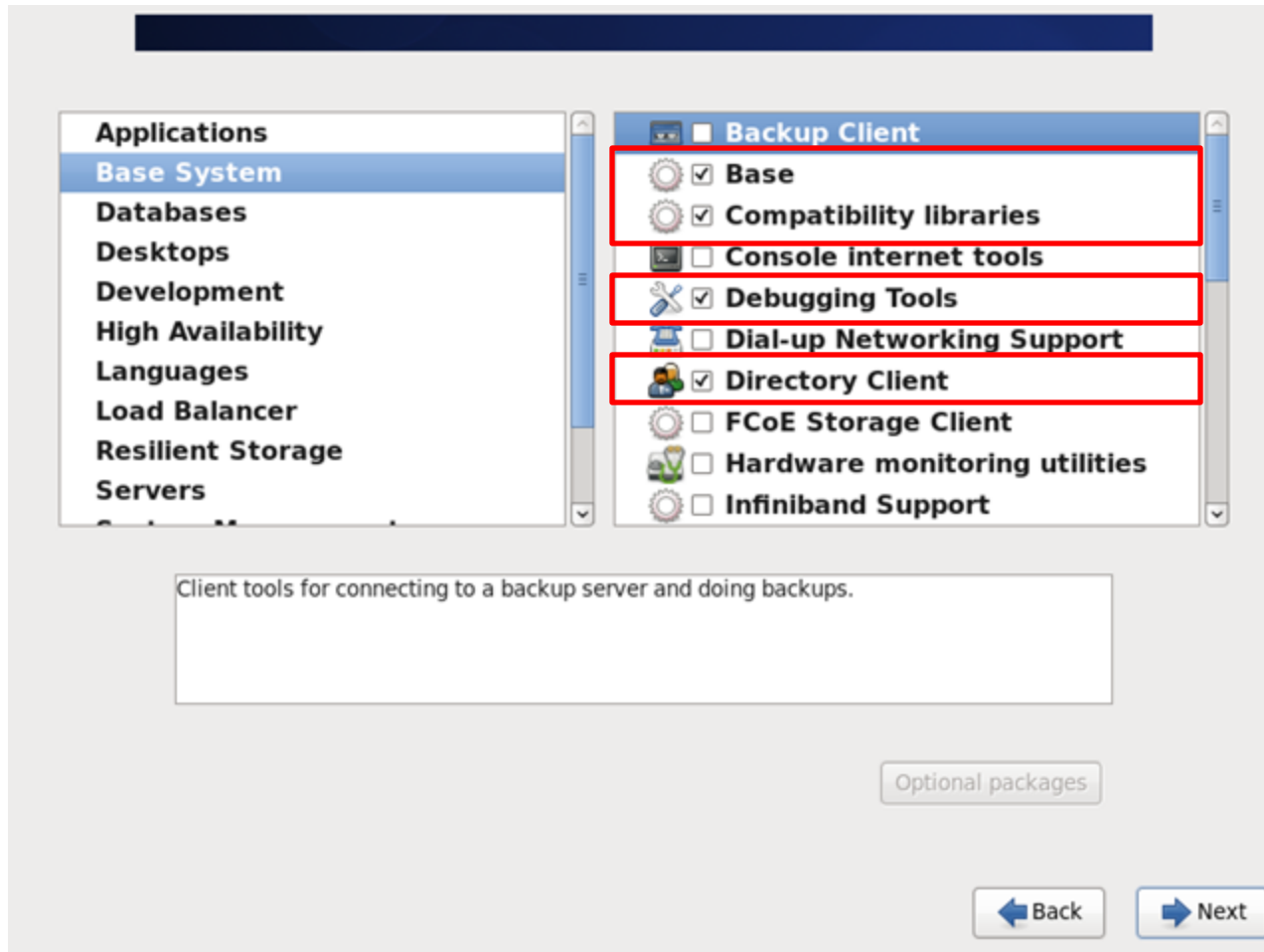
Please select any additional repositories that you want to use for software installation.

- CentOS

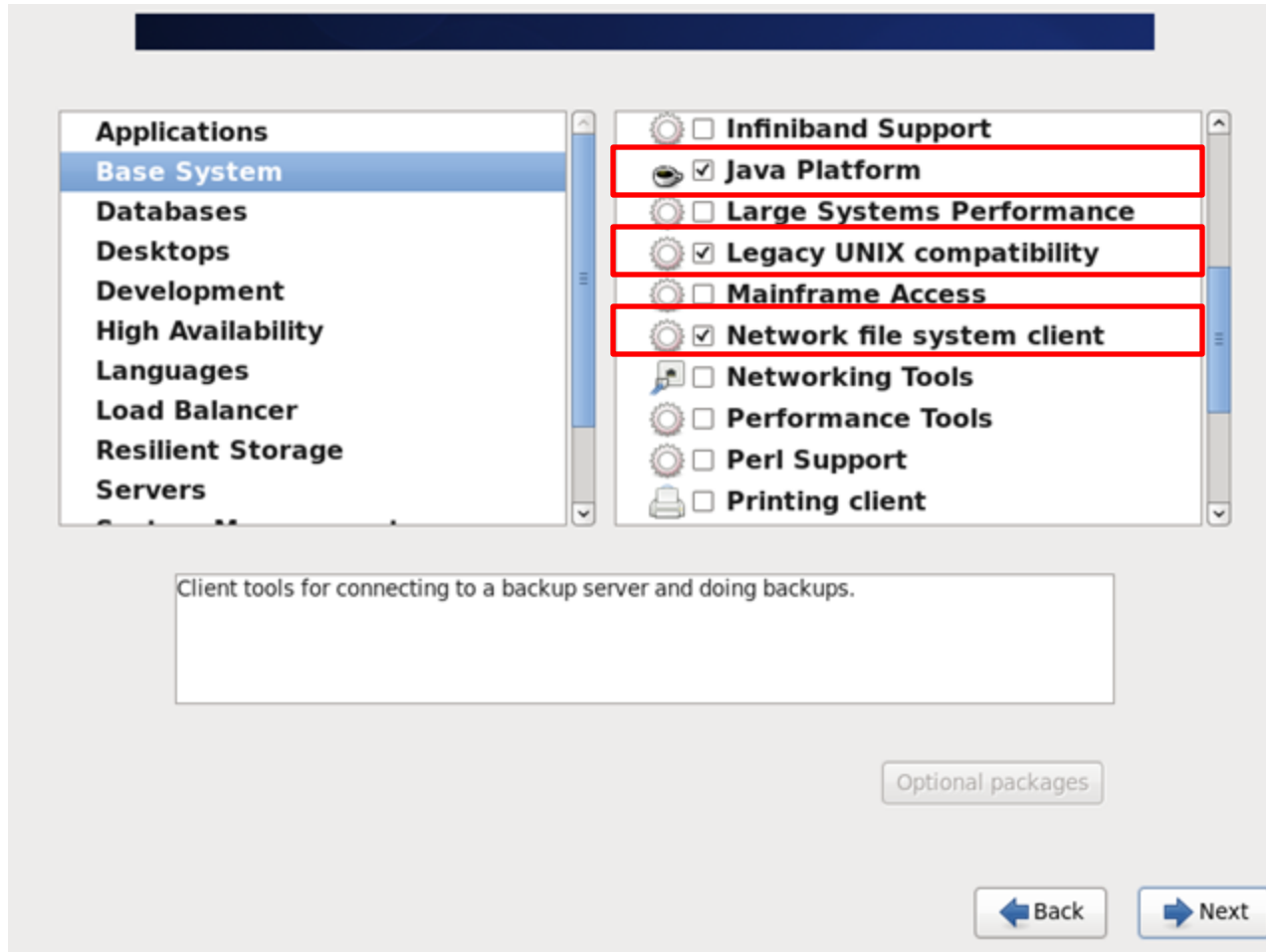
You can further customize the software selection now, or after install via the software management application.

- Customize later
- Customize now

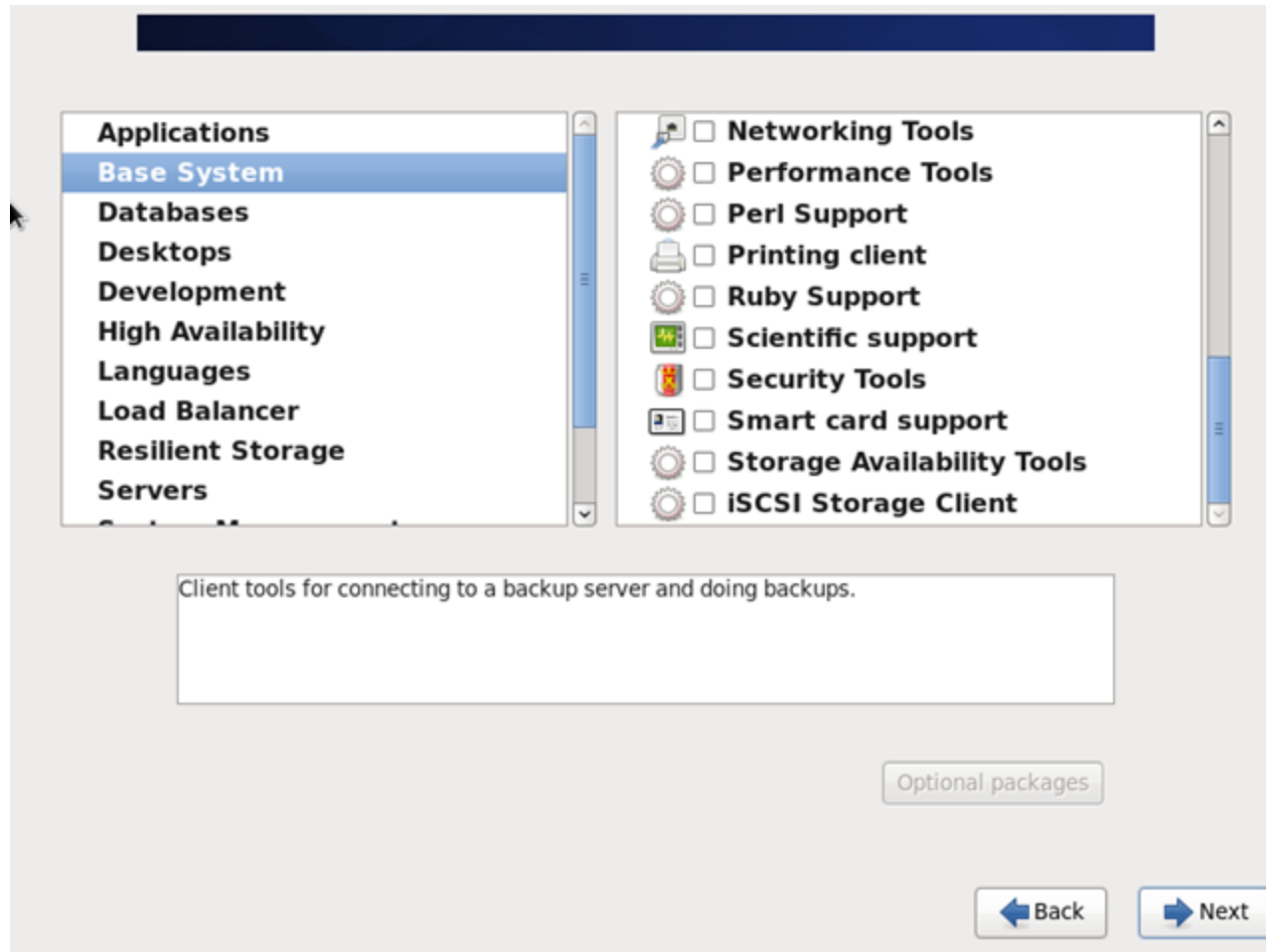
CentOS 6.5 Install for IPCR



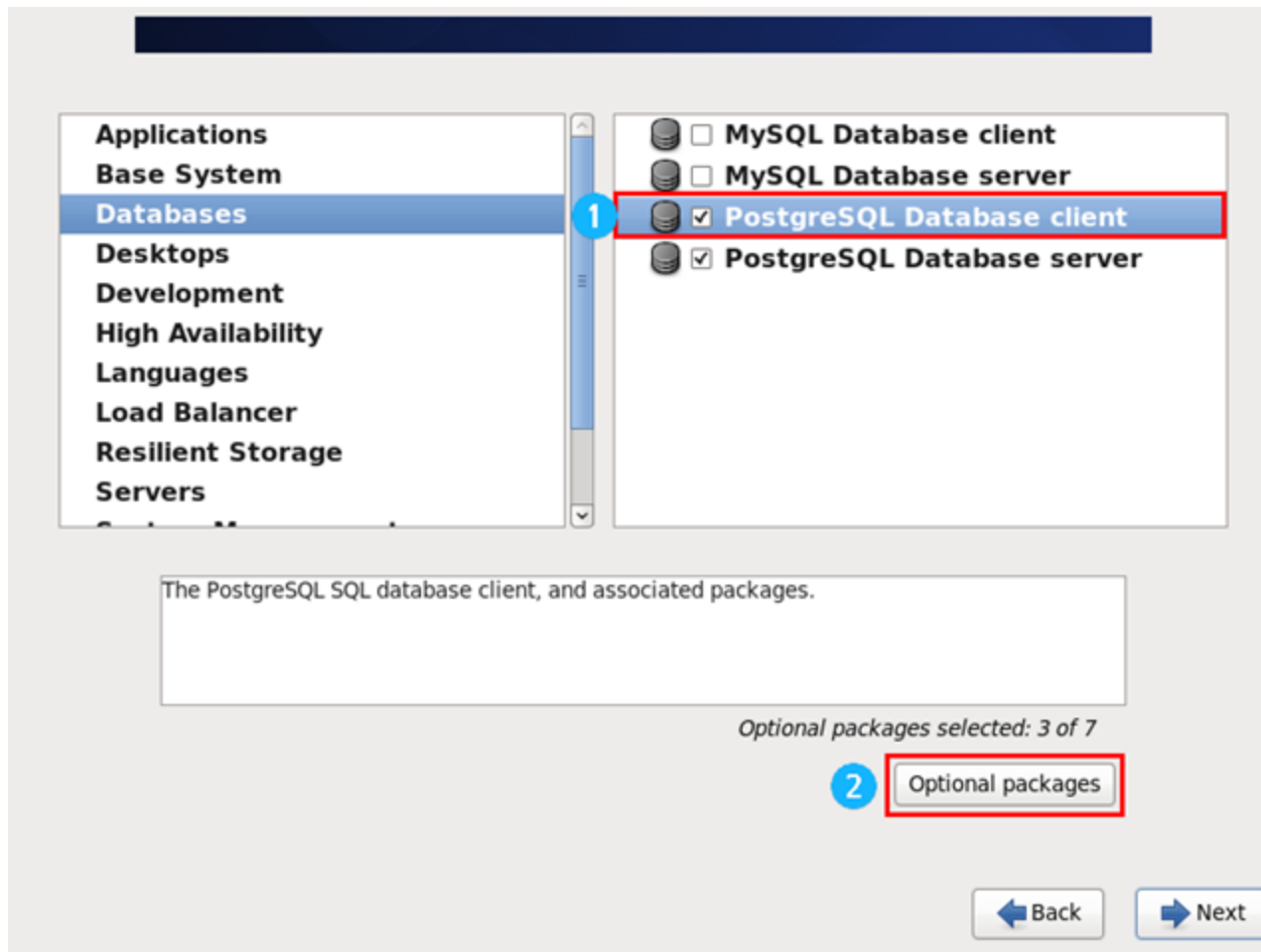
CentOS 6.5 Install for IPCR



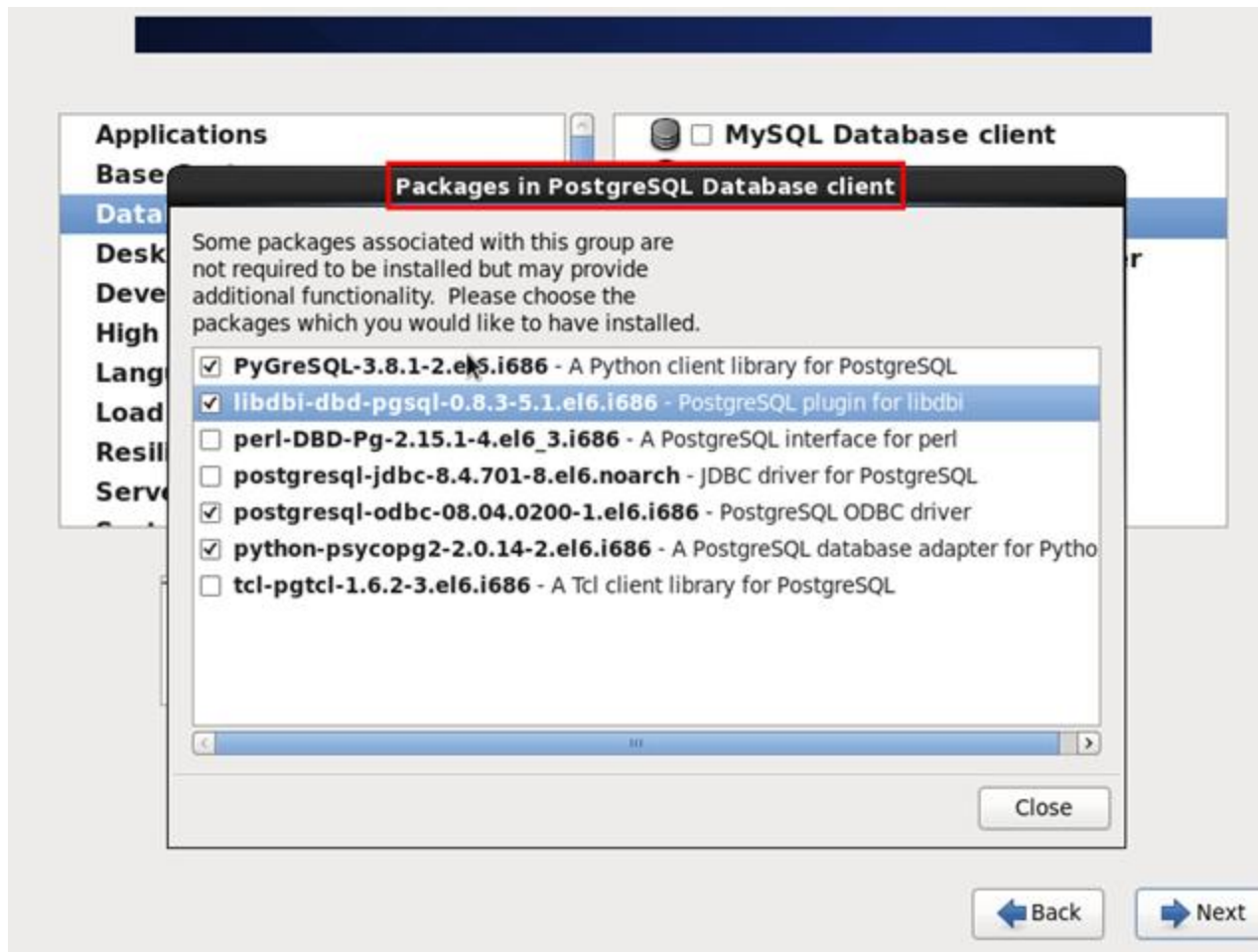
CentOS 6.5 Install for IPCR



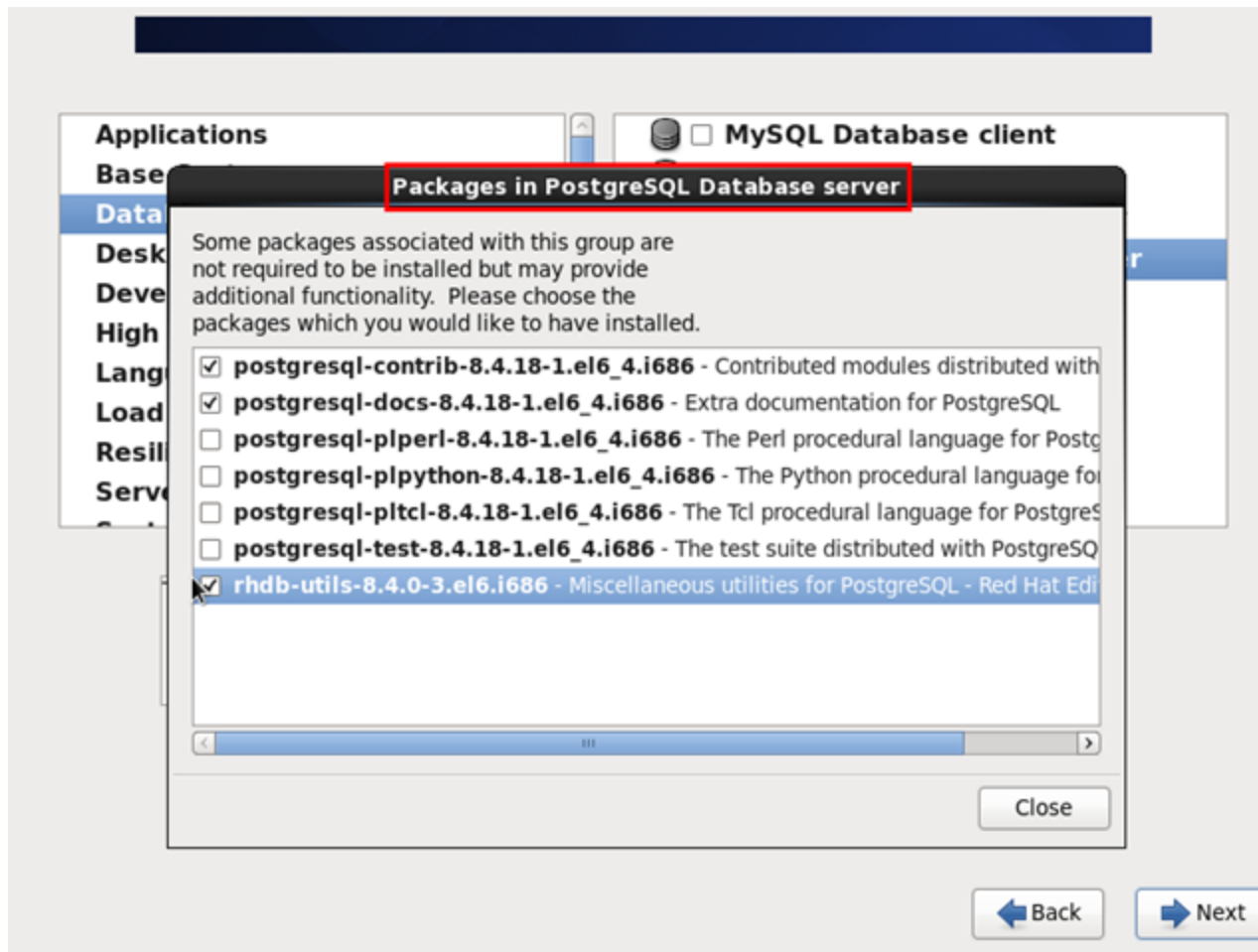
CentOS 6.5 Install for IPCR



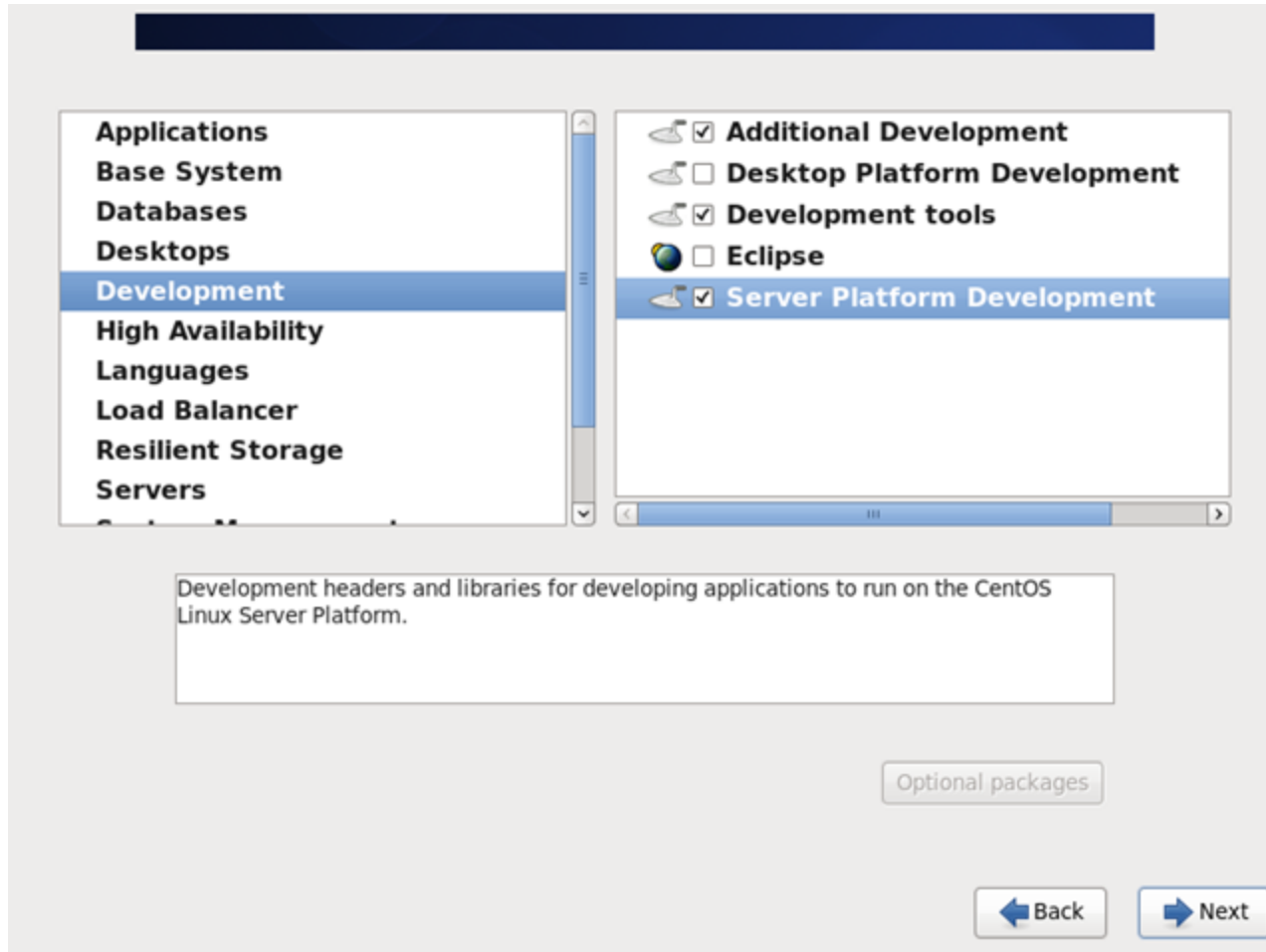
CentOS 6.5 Install for IPCR



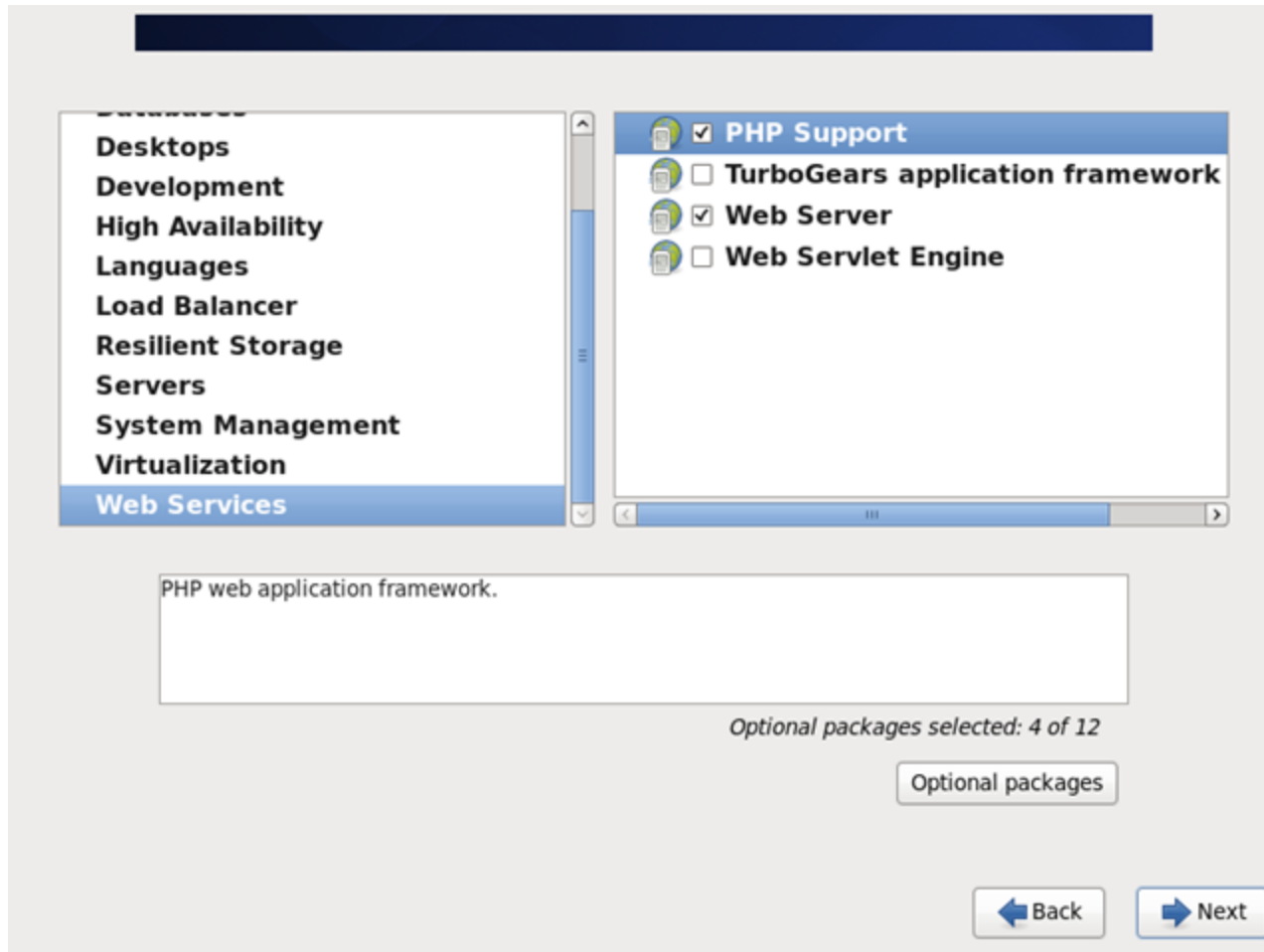
CentOS 6.5 Install for IPCR



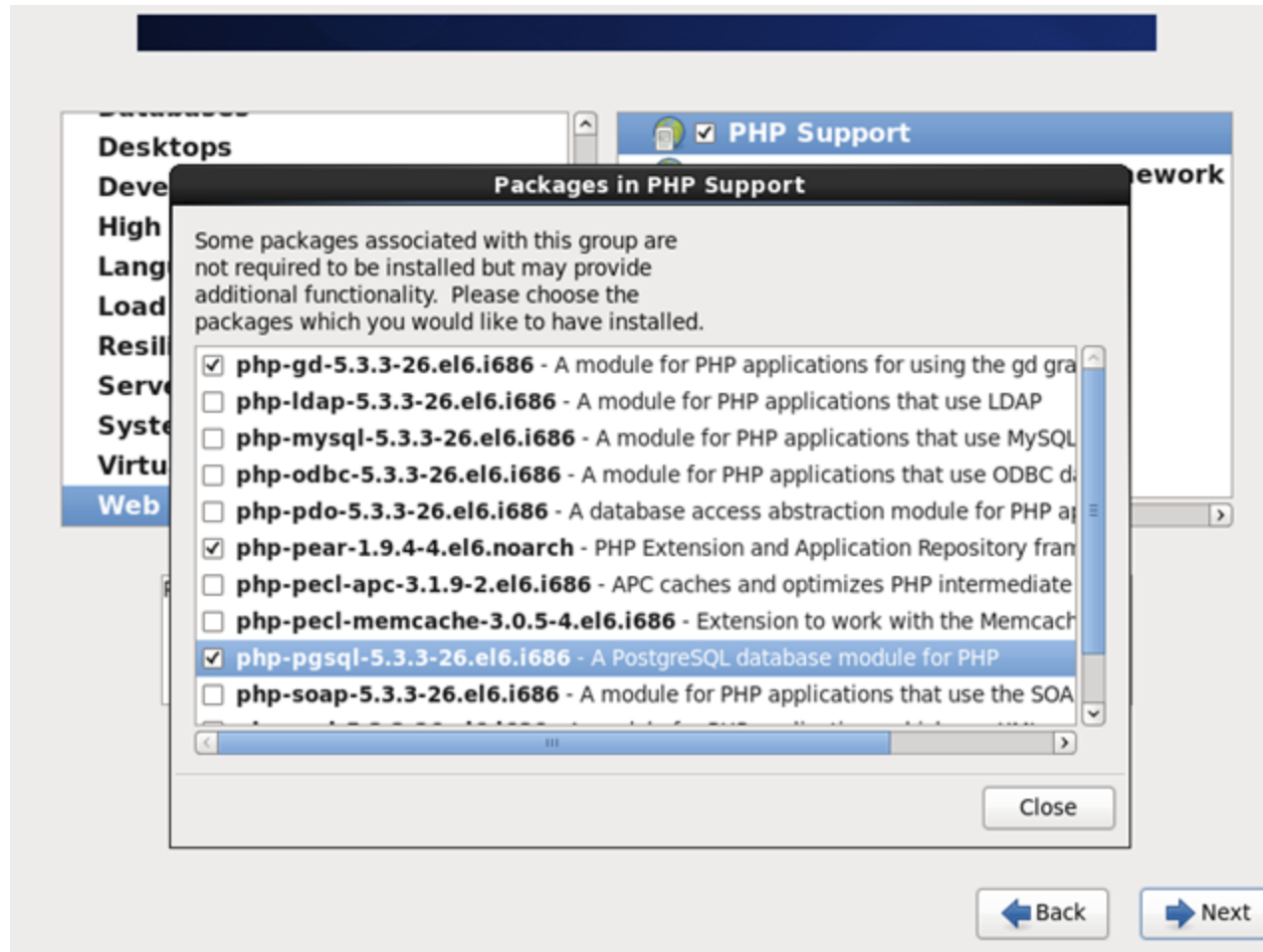
CentOS 6.5 Install for IPCR



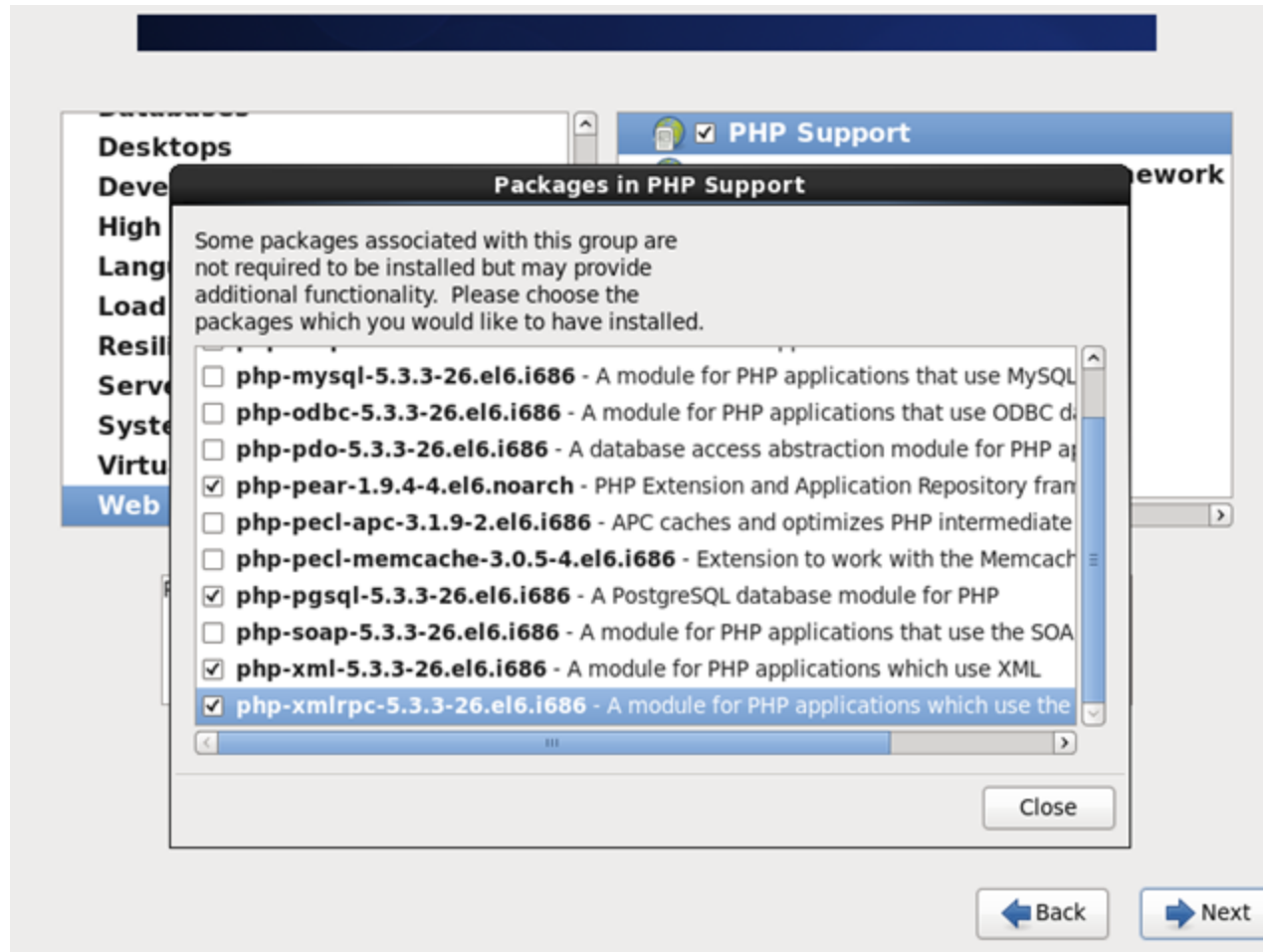
CentOS 6.5 Install for IPCR



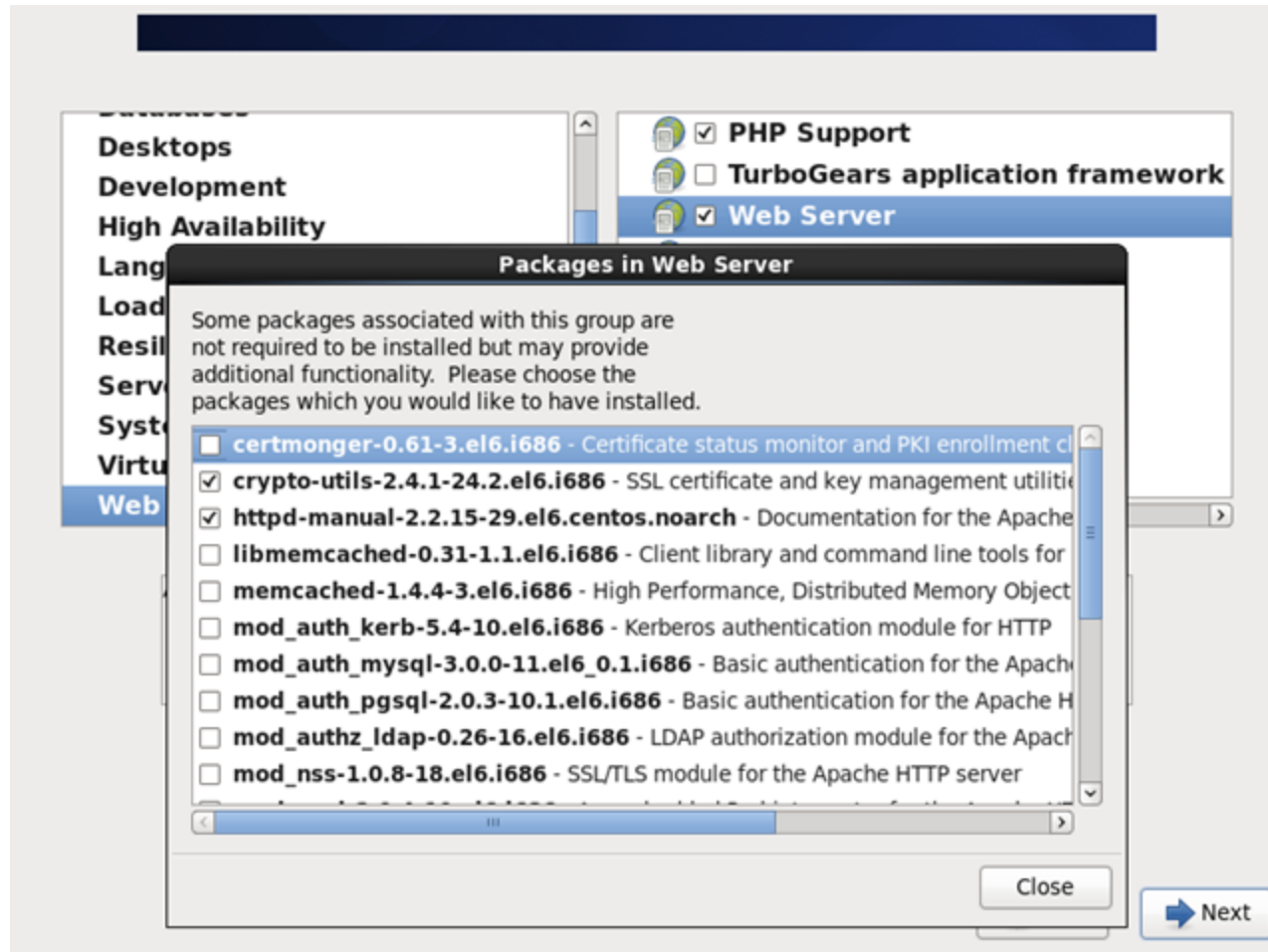
CentOS 6.5 Install for IPCR



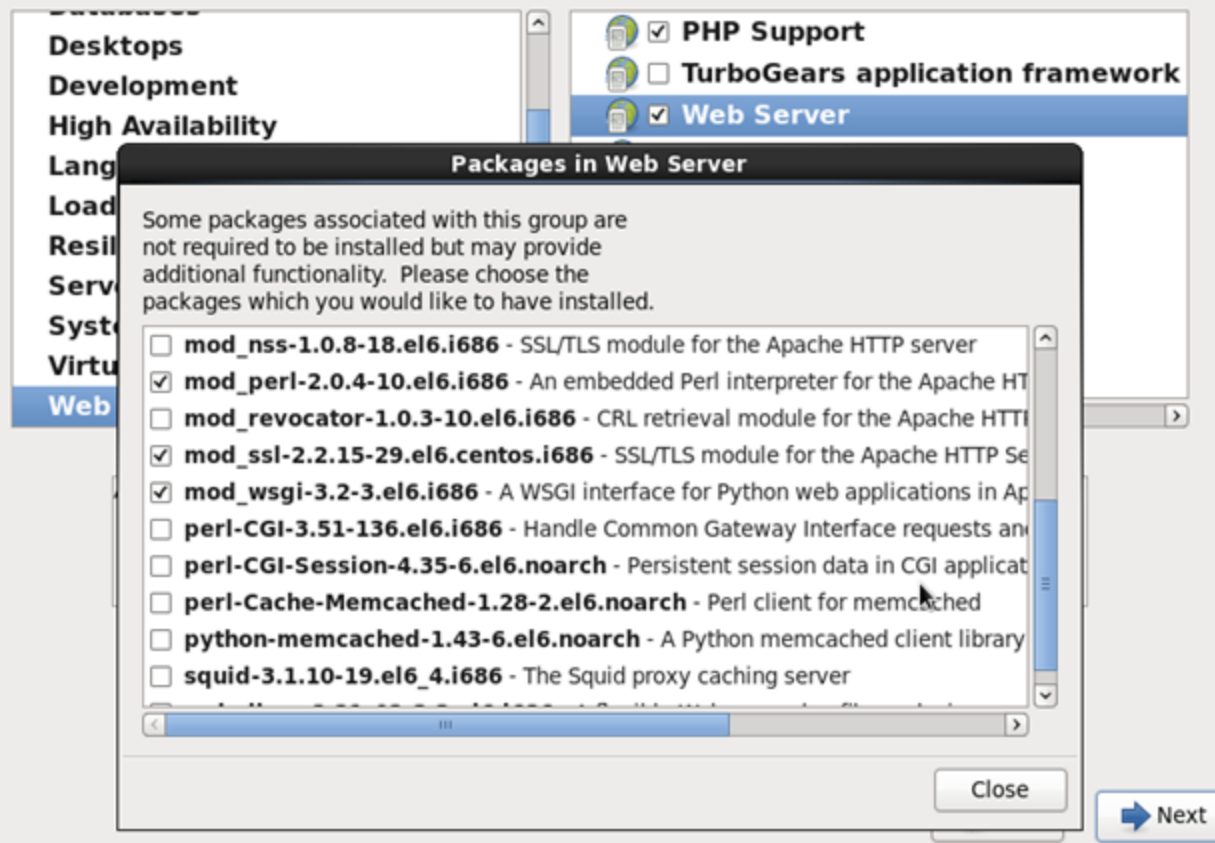
CentOS 6.5 Install for IPCR



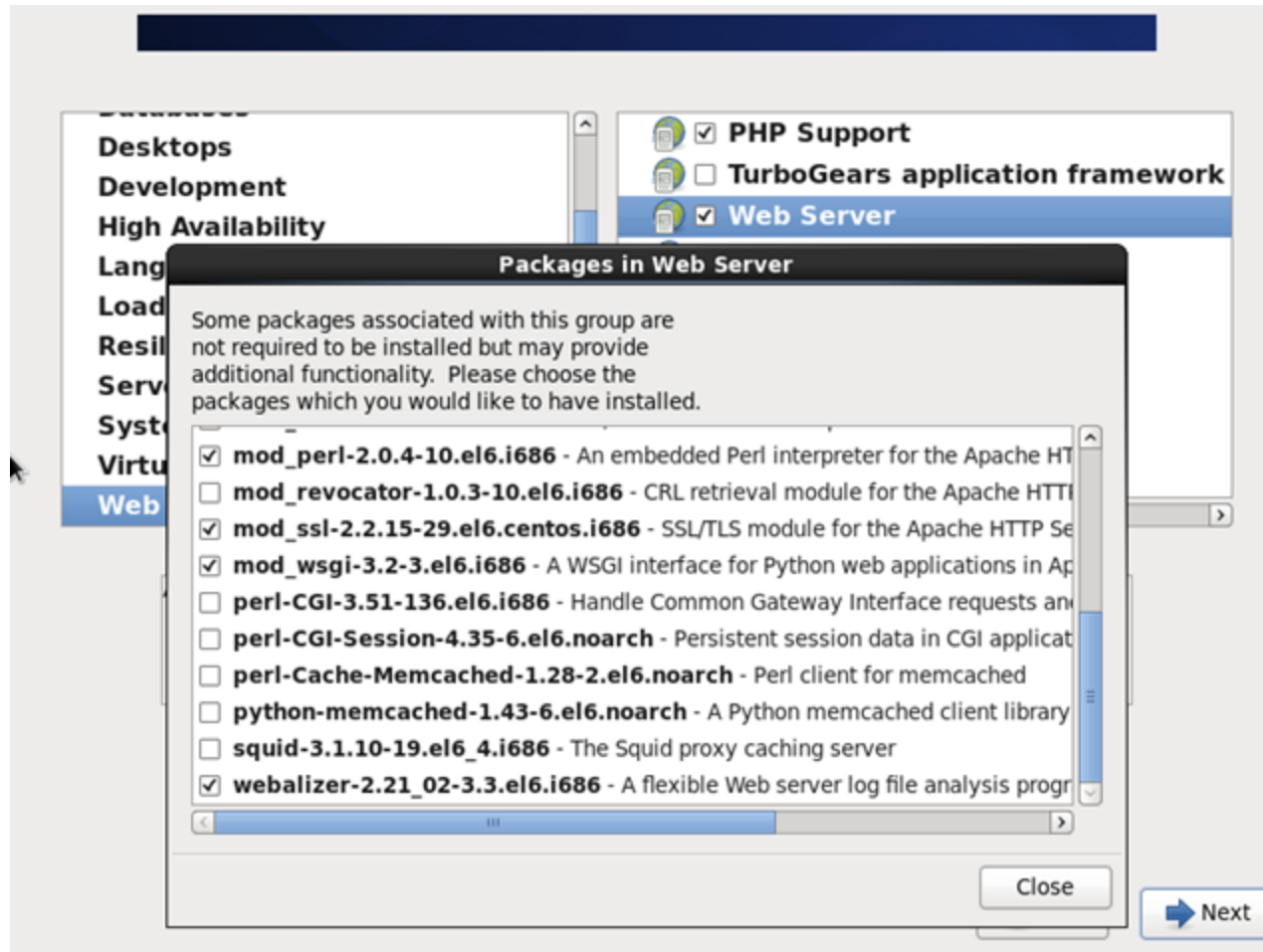
CentOS 6.5 Install for IPCR



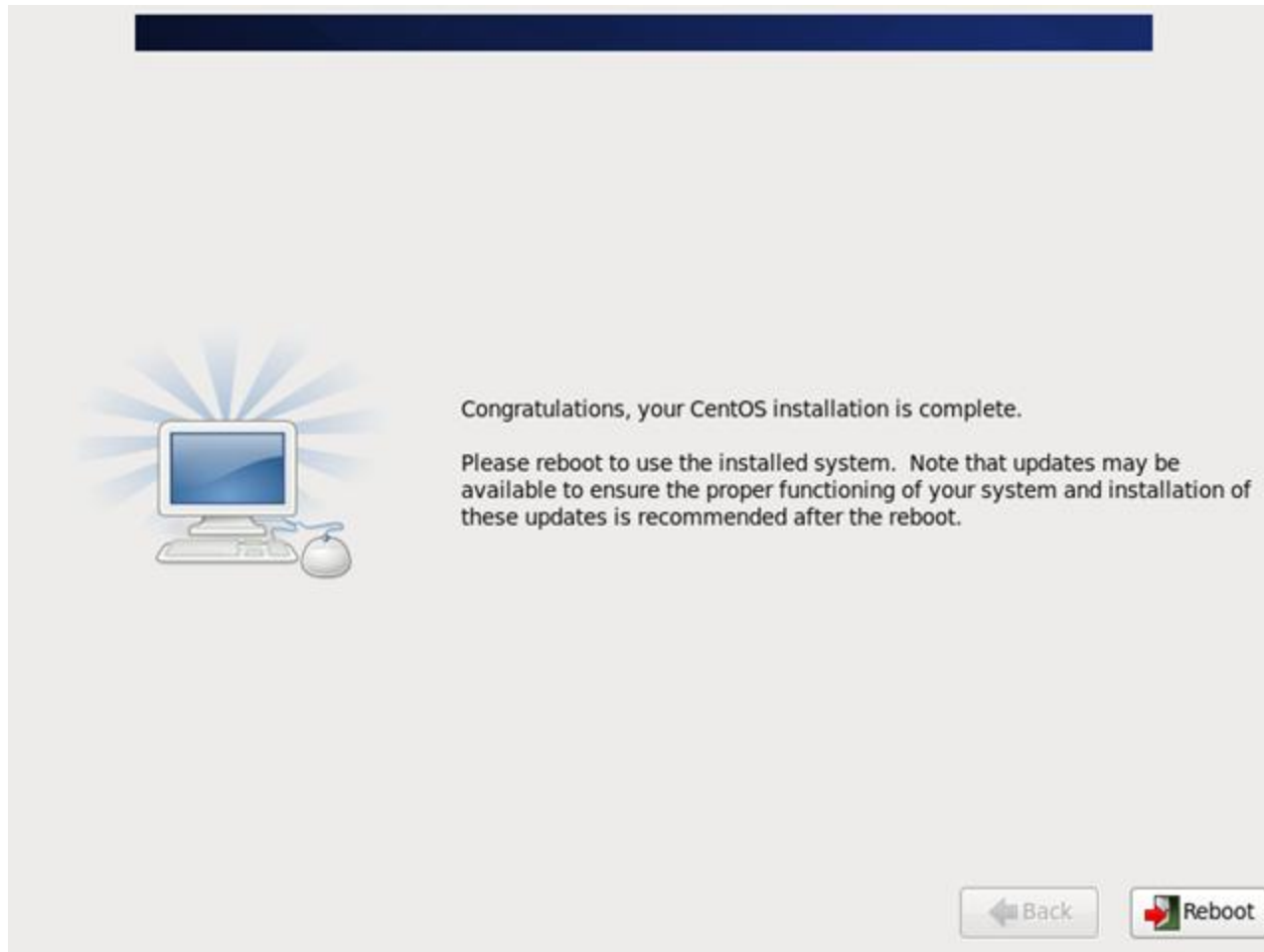
CentOS 6.5 Install for IPCR



CentOS 6.5 Install for IPCR



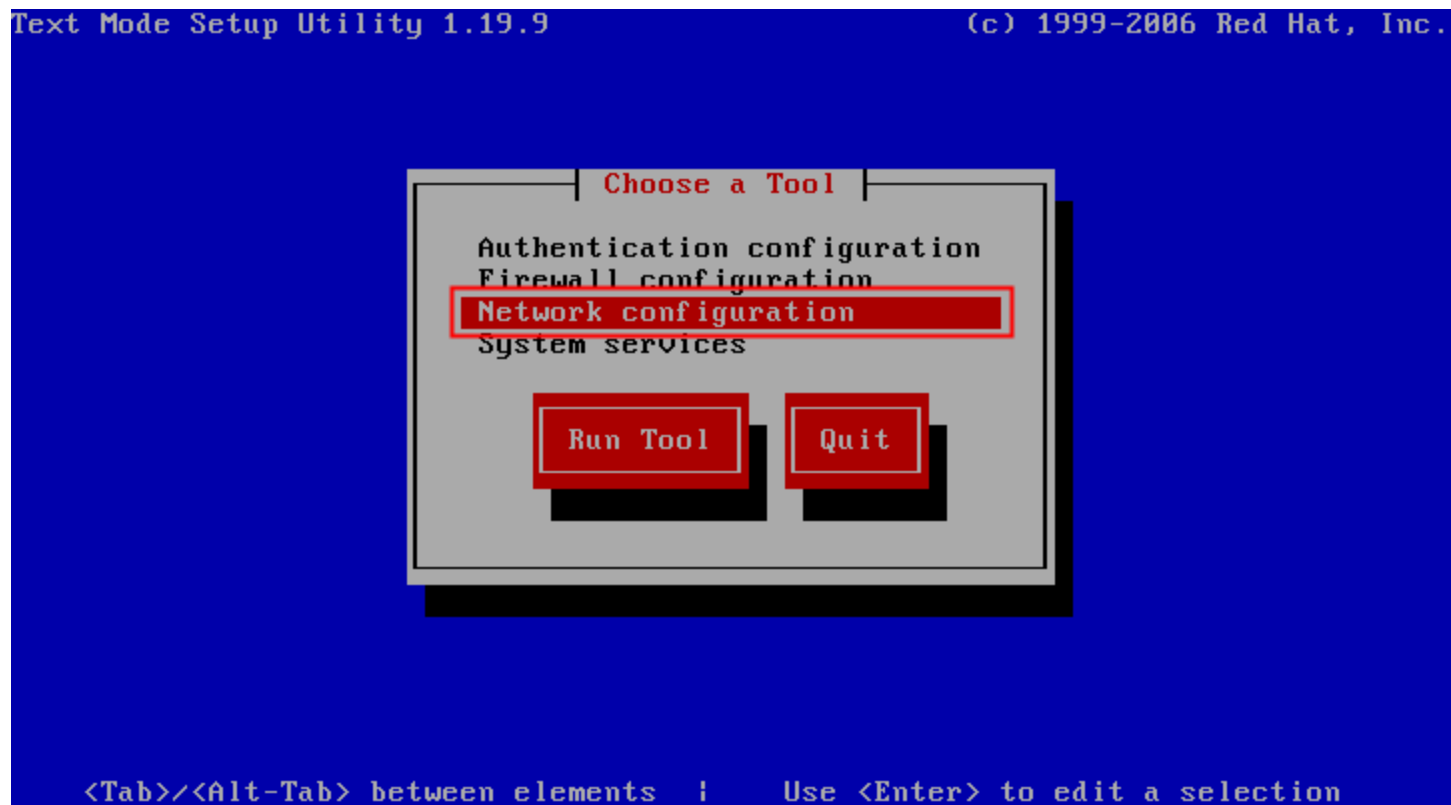
CentOS 6.5 Install for IPCR



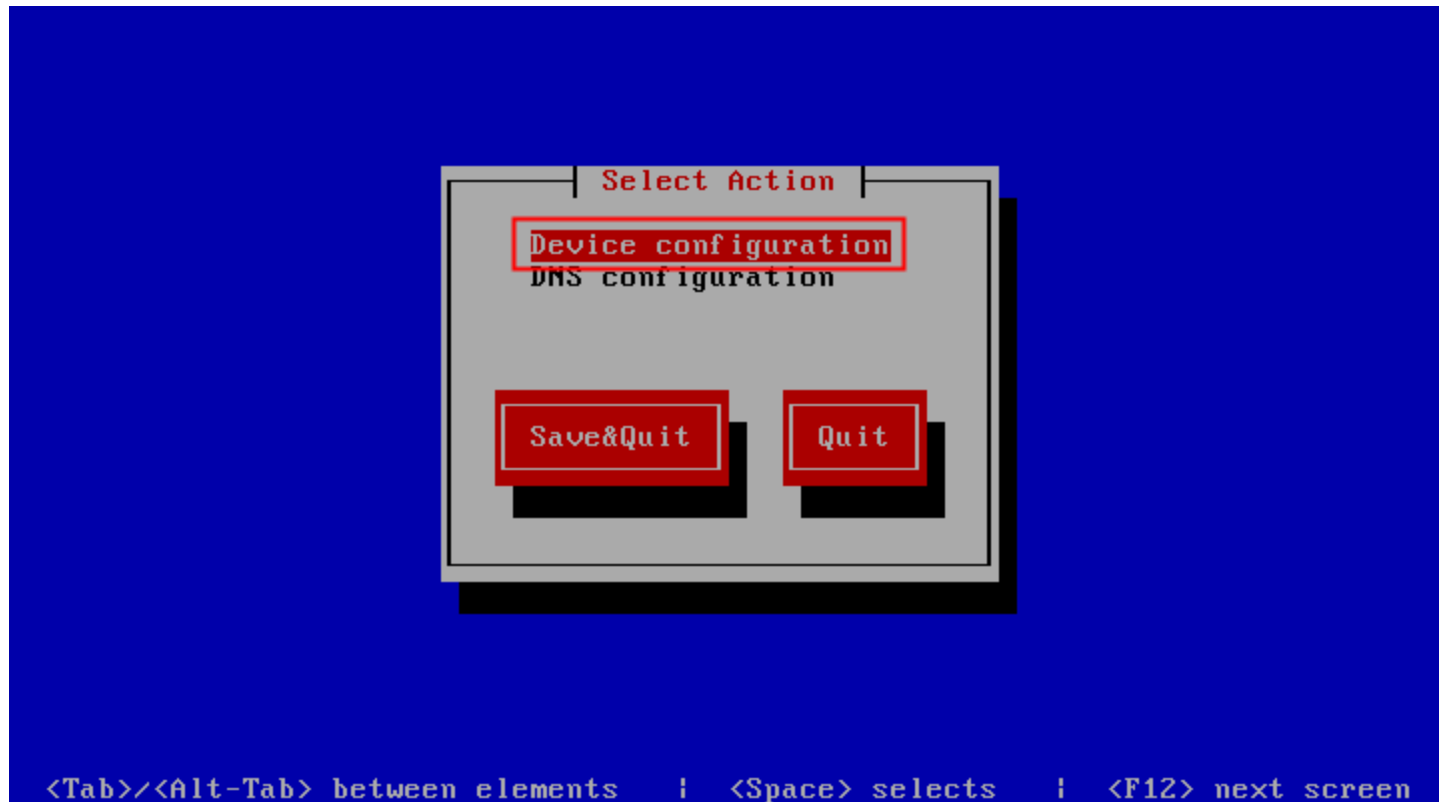
IPCR install guide (ver 20Ao)

```
[root@localhost ~]# setup_
```

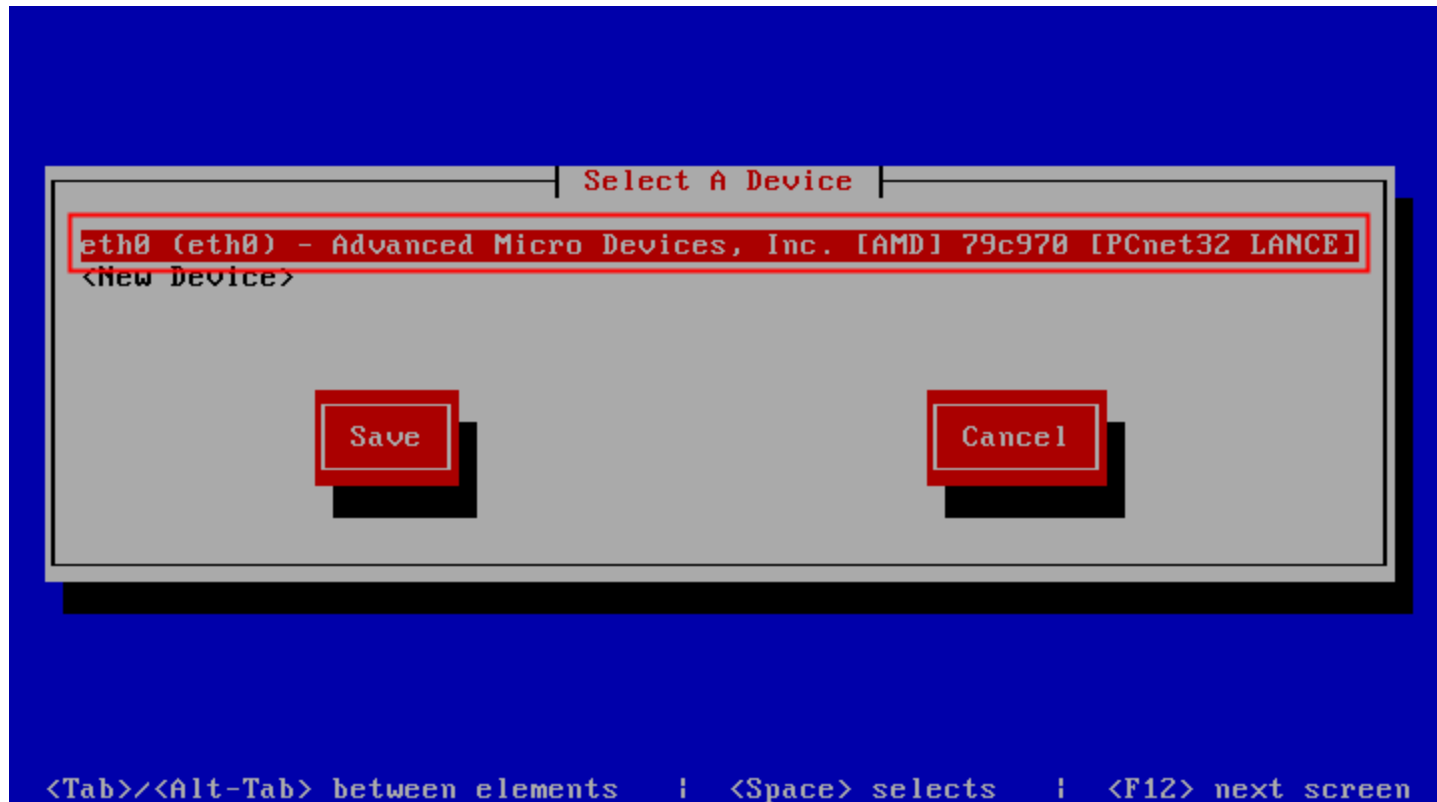
IPCR install guide (ver 20Ao)



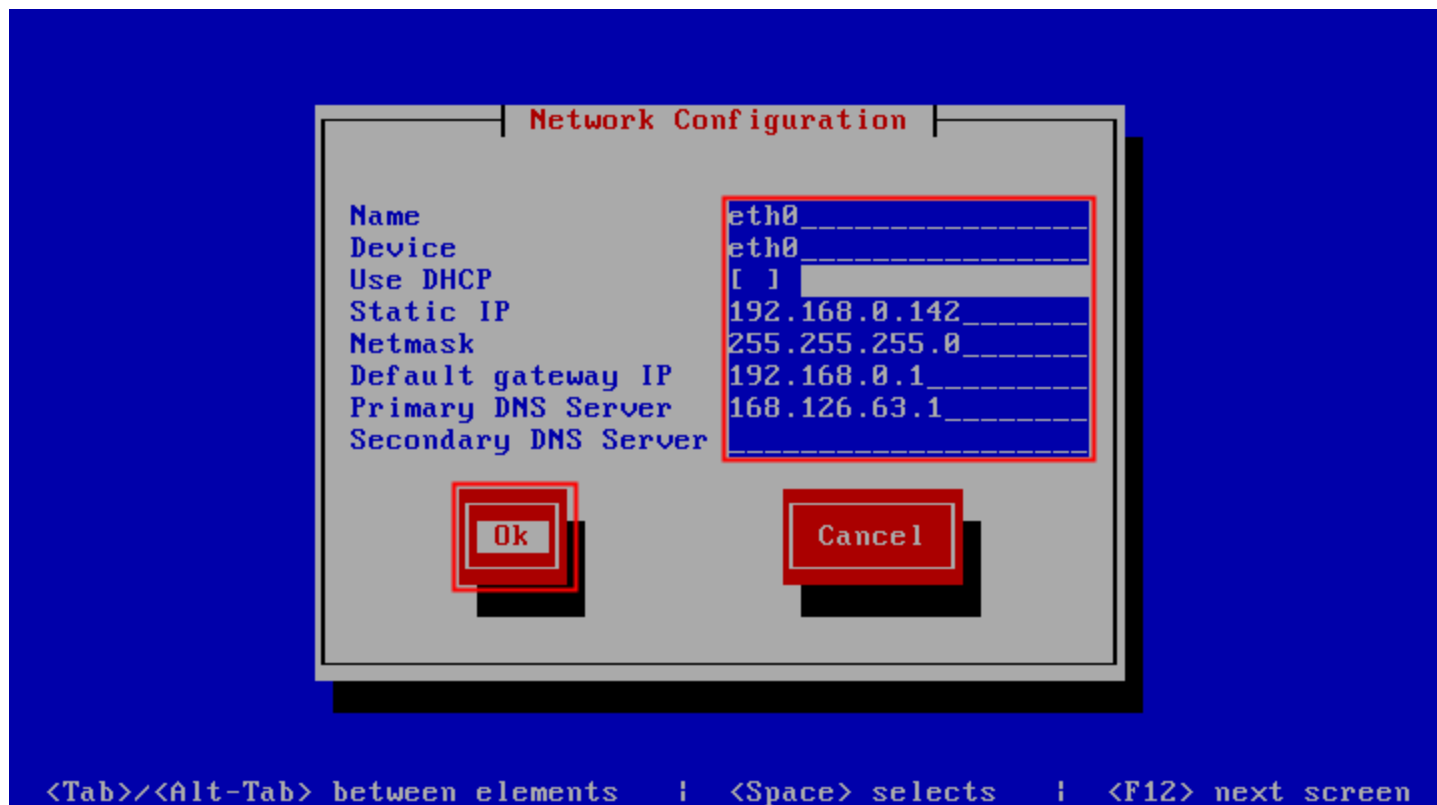
IPCR install guide (ver 20Ao)



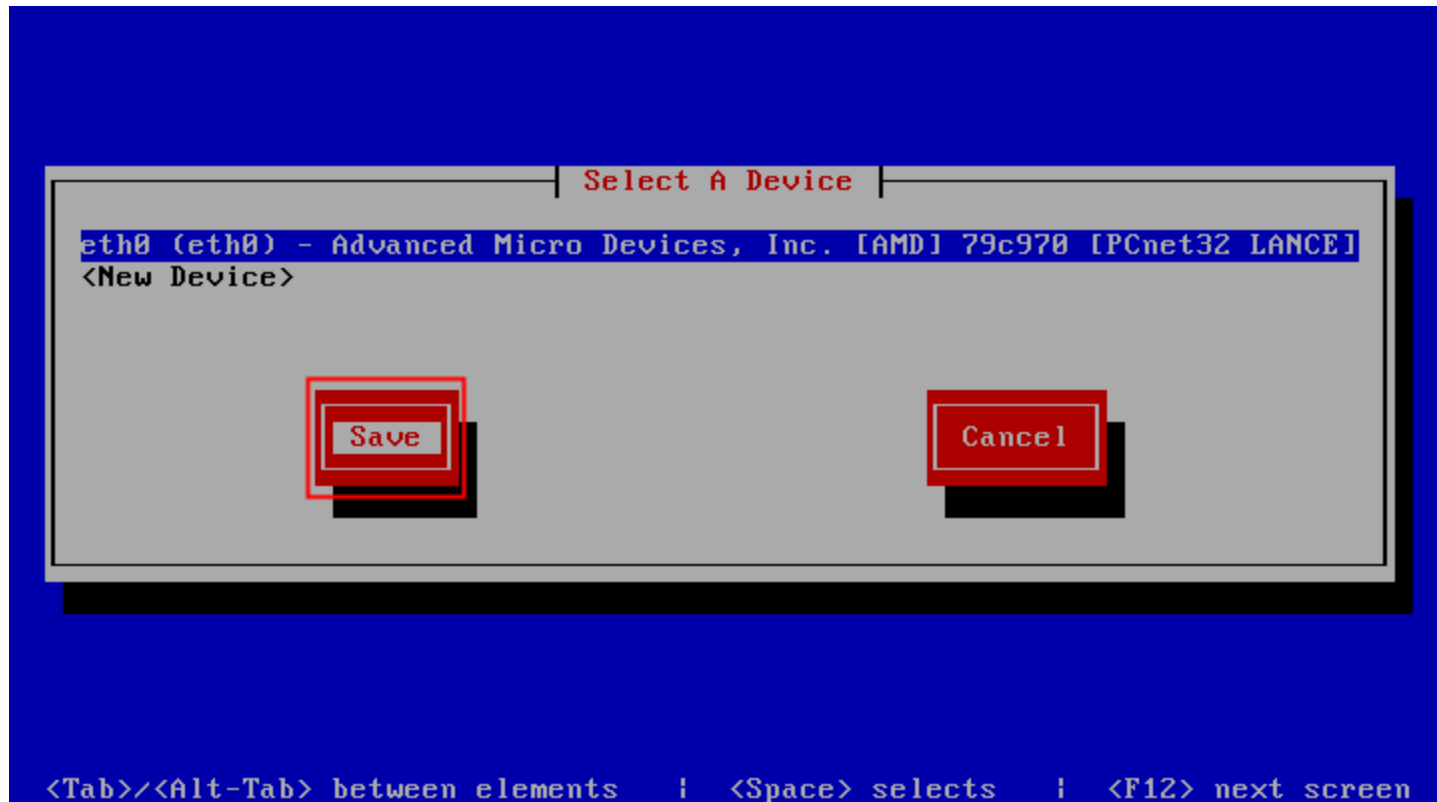
IPCR install guide (ver 20Ao)



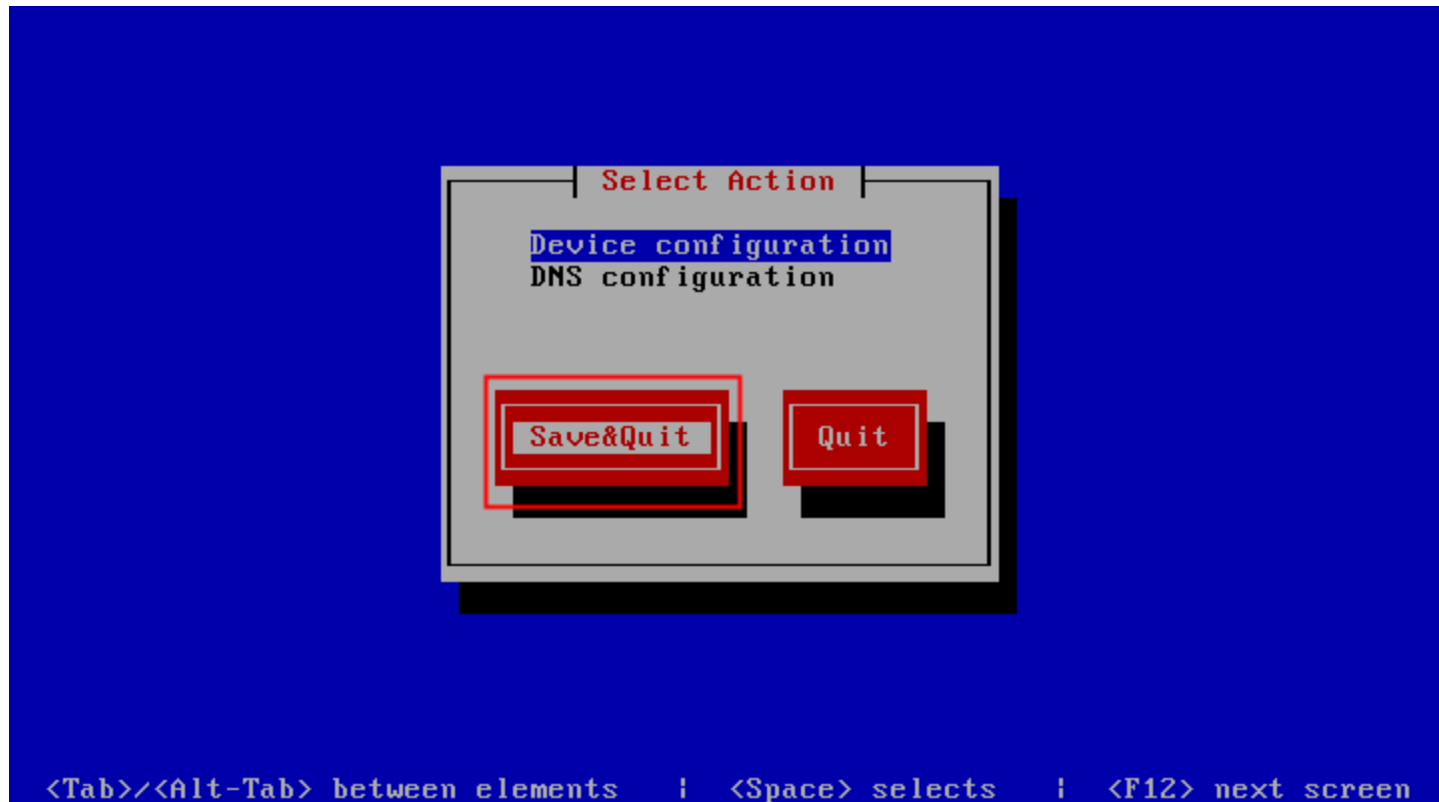
IPCR install guide (ver 20Ao)



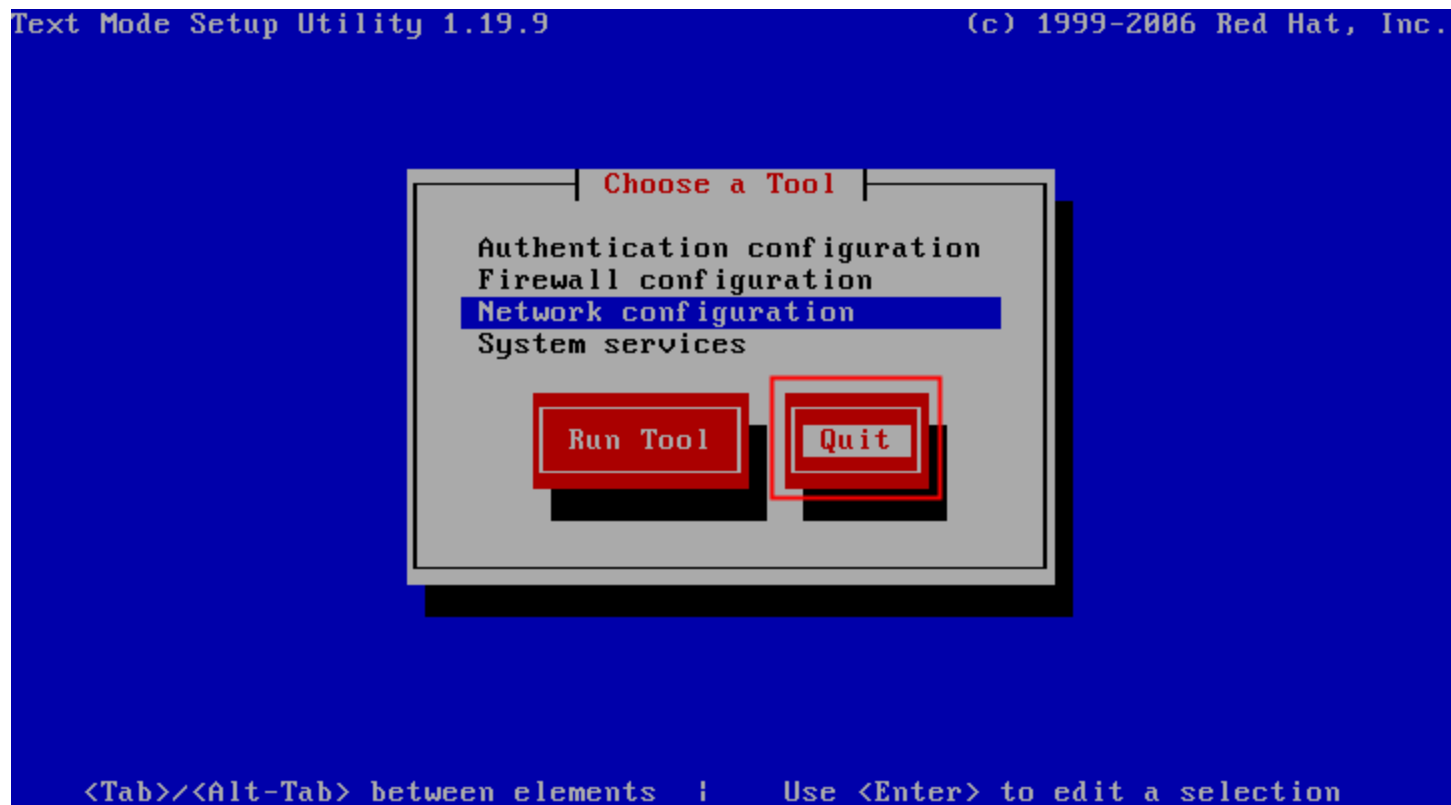
IPCR install guide (ver 20Ao)



IPCR install guide (ver 20Ao)



IPCR install guide (ver 20Ao)



IPCR install guide (ver 20Ao)

```
Text Mode Setup Utility 1.19.9                                (c) 1999-2006 Red Hat, Inc.

[root@localhost ~]# vi /etc/sysconfig/network-scripts/ifcfg-eth0
```


IPCR install guide (ver 20Ao)

```
[root@localhost ~]# service network restart
Shutting down loopback interface:          [ OK ]
Bringing up loopback interface:           [ OK ]
Bringing up interface eth0: Determining if ip address 192.168.0.142 is already
in use for device eth0...                  [ OK ]
[root@localhost ~]# _
```

IPCR install guide (ver 20Ao)

```
[root@localhost ~]# ifconfig
eth0      Link encap:Ethernet  HWaddr 00:0C:29:EB:7A:58
          inet addr:192.168.0.142  Bcast:192.168.0.255  Mask:255.255.255.0
          inet6 addr: fe80::20c:29ff:feeb:7a58/64 Scope:Link
          UP BROADCAST RUNNING MULTICAST  MTU:1500  Metric:1
          RX packets:108 errors:0 dropped:0 overruns:0 frame:0
          TX packets:14 errors:0 dropped:0 overruns:0 carrier:0
          collisions:0 txqueuelen:1000
          RX bytes:7654 (7.4 KiB)  TX bytes:848 (848.0 b)
          Interrupt:19 Base address:0x2000

lo        Link encap:Local Loopback
          inet addr:127.0.0.1  Mask:255.0.0.0
          inet6 addr: ::1/128 Scope:Host
          UP LOOPBACK RUNNING  MTU:16436  Metric:1
          RX packets:0 errors:0 dropped:0 overruns:0 frame:0
          TX packets:0 errors:0 dropped:0 overruns:0 carrier:0
          collisions:0 txqueuelen:0
          RX bytes:0 (0.0 b)  TX bytes:0 (0.0 b)

[root@localhost ~]# _
```

IPCR install guide (ver 20Ao)

```
[root@localhost ~]# ls  
anaconda-ks.cfg  install_ipcr_20Ao.tar.gz  install.log  install.log.syslog  
[root@localhost ~]# tar xvpfz install_ipcr_20Ao.tar.gz -C /_
```

IPCR install guide (ver 20Ao)

```
var/www/html/work/interface/interface.HTML
var/www/html/work/interface/RecSeeSocketControl.php
var/www/html/work/interface/ProcSendControl.php
var/www/html/work/interface/FcManagerSocketControl.php
var/www/html/work/interface/init_password.sh
var/www/html/work/interface/wav2mp3_new.sh
var/www/html/work/interface/RecSeeEncryption.php
var/www/html/work/interface/RecSeeClient.js
var/www/html/work/interface/SocketControl.html
var/www/html/work/interface/SocketControl_bk.swf
var/www/html/work/interface/AC_RunActiveContent.js
var/www/html/work/interface/RecSeeInterfaceWeb.js
var/www/html/work/interface/SocketControl.swf
var/www/html/work/interface/RecSeeInterface.js
var/www/html/work/interface/update_shell.php
var/www/html/work/update/
var/www/html/work/statistics/
var/www/html/work/statistics/report/
var/www/html/work/statistics/report/report_ifr.php
var/www/html/work/statistics/report/20130416.log
var/www/html/work/statistics/report/excel_print.php
var/www/html/work/statistics/report/report.php
var/www/html/crossdomain.xml
var/www/html/index.php
[root@localhost ~]# ./install.sh _
```




IPCR install guide (ver 20Ao)

```
TOTAL EXTENSION = 0
===== RecSee_RvRtpOpen() =====
TOTAL_LINE[0]
=====
debug modules loaded:
  driver (on)
  srtp (off)
  hmac sha-1 (off)
  aria icm (off)
  aes cbc (off)
  aes icm (off)
  alloc (off)
  stat test (off)
  cipher (off)
  auth func (off)
  crypto kernel (off)
AGENT Recording Waiting...
local ip address = [100000000 (000C29EB7A58)]
OnDemand Recording Waiting...
System Command Waiting...
HTTP SERVER START
Device: [eth0]
DB Connection Success!
```