




ECUSend V. 3.0.0.5

ECU memory transfer tool

BOSCH



BOSCH 	ECU memory transfer tool Abstract	Page: 2/10 Date: State:
--	--	-------------------------------

Abstract

This program is for transfer ECU-memory container to the manufacturing resp. model department. Select the destination department from a list of targets and press the [send ECU-memory container] button. Now the tool send the container to the target(s). There are some features:


- send an email to the addresses listed in the container
- make a backup copy in a specified folder
- multiple select of targets
- the intranet interface of the AS/COPRA PDM is now supported
- drag and drop of the container file
- write logfile in backup folder
- check the container

Table of Contents

	Table of Contents	3
	List of Figures	4
1	Batch mode	5
2	Interactive mode	6
2.1	Buttons & Boxes	6
2.1.1	container file	6
2.1.2	check container	6
2.1.3	send email	6
2.1.4	send ECU-memory container	7
2.1.5	exit	7
2.2	Menu	7
2.2.1	options	7
2.2.2	help	8

List of Figures

Figure 1	the main window	6
Figure 2	option menu	7
Figure 3	change backup folder	8
Figure 4	help menu	8
Figure 5	target information window	9

BOSCH 	ECU memory transfer tool	Page: 5/10
	Chapter: Batch mode	Date: State:

1 Batch mode

To send ECU Container to one or more target FTP mailboxes, type at the command prompt following syntax:

ECUSend filename -t target [-t target [-t target [...]]] [-nolog] [-nobackup]

filename The containerfile e.g. container.cnt

-t target For target, please type the shortname of the target. You can get the short name at [Topic 2.2.2 available targets p. 9](#). Multiple targets are supported.

-nolog No log information will write to the log file "ecusendlog.txt" in the backup folder.

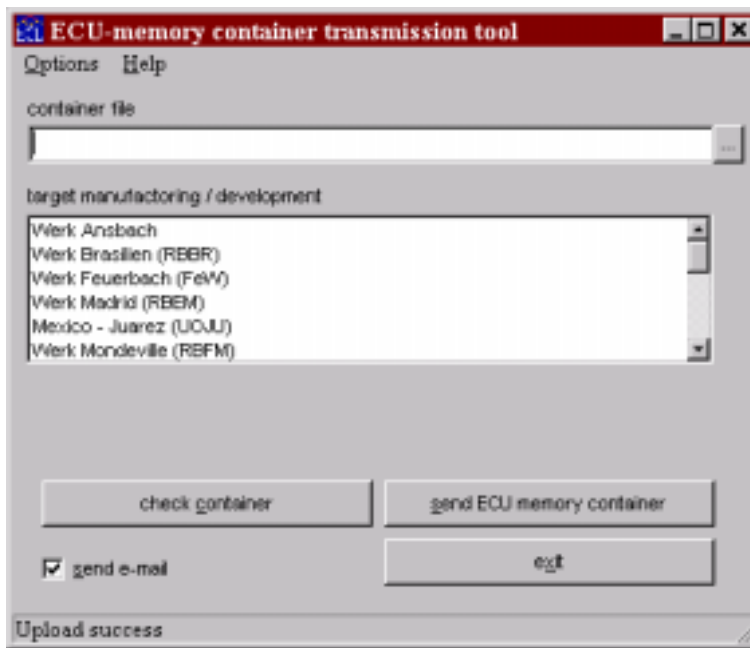
-nobackup The backup function of the program to save the container that sent to the target
In this mode there you can't use the function "send email" of the program. In normal case the manufactory will send an email to the addresses that wrote in the container file after receive and unpack the container.

After a failed execution of ECUSend in the batch mode, the program will give back an errorlevel 1.

2 Interactive mode

2.1 Buttons & Boxes

Here is your start position of the interactive mode. From this place you have the following possibilities:



pictures/main.png

Figure 1: the main window

2.1.1 container file


Select the container for transfer. With the button on the left from the textbox you can start a open file dialog to select the container. The program uses the path, where the last container was send from. Tthe drag and drop funktion can be used, too.

2.1.2 check container

Until version 2.011 of the ECUSend program, you must check the container by using a command line interface. Since the version 3.0 you can make such a check by pressing the button [check container]. The check will check some tag contents and the structure of the container.

2.1.3 send email

If selected, after sending the container to the target(s), your email software (Outlook/ Exchange) will be generate a new. The mail address at the "to" field will be filled out by

BOSCH 	ECU memory transfer tool	Page: 7/10
	Chapter: options	Date: State:

ECUSend with the contents of the mail addresses in the containerfile. You can modify the mail an send it manual.

2.1.4 send ECU-memory container

When you press this button, the container file will be send to the selected destination. After the transfer you get a message in the statusbar that the transfer is completed. If there are more than one destination selected that is in the AE-COPRA System, the itranet page for check in the container into the COPRA system will call only once.

The program search in the container for german characters like "ä" and change them to the corrsponding two character code. For example an "ä" will become a "ae".

2.1.5 exit

Here you close the program.

2.2 Menu

2.2.1 options

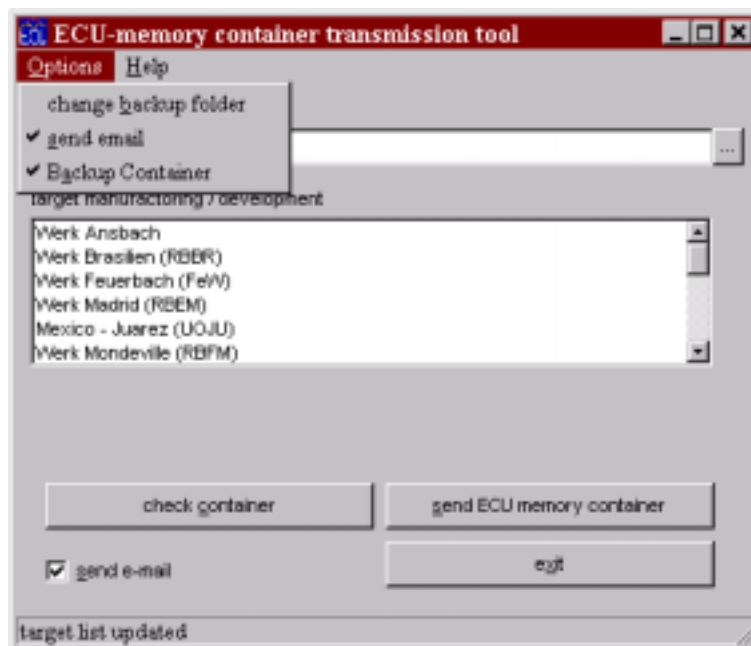
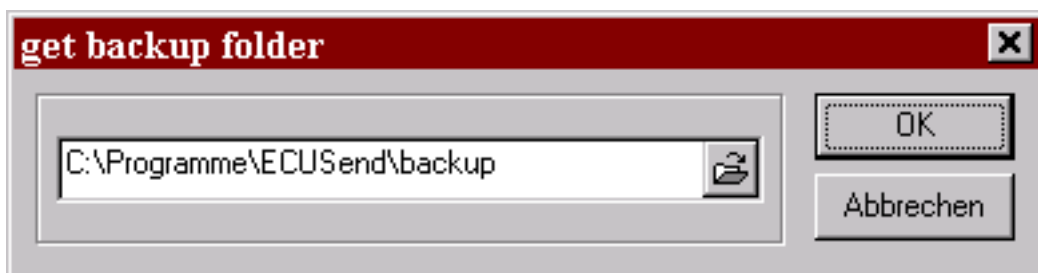


Figure 2: option menu

change backup folder

here you select the folder for the backup files.

pictures/main-options.png



pictures/backup.png

Figure 3: change backup folder

send email

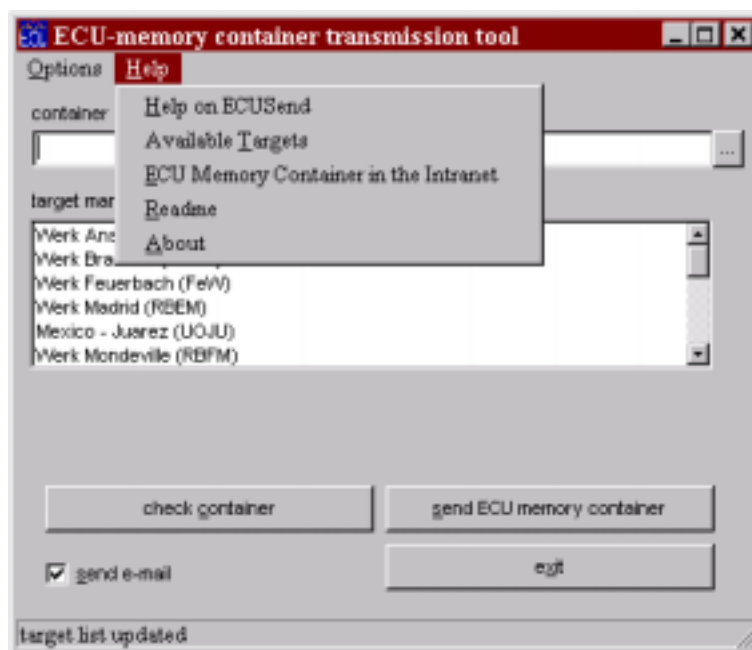
If this Item is selected, the program search in the container for email addresses of reciever and submitter and starts the mail client (e.g. Outlook) for manipulation and sending a mail.

backup container

If selected, the container will be copied into the directory, that specified in the dialog [Figure 3 change backup folder p. 8.](#)

2.2.2

help



pictures/main-help.png

Figure 4: help menu

help on ECUSend

available targets

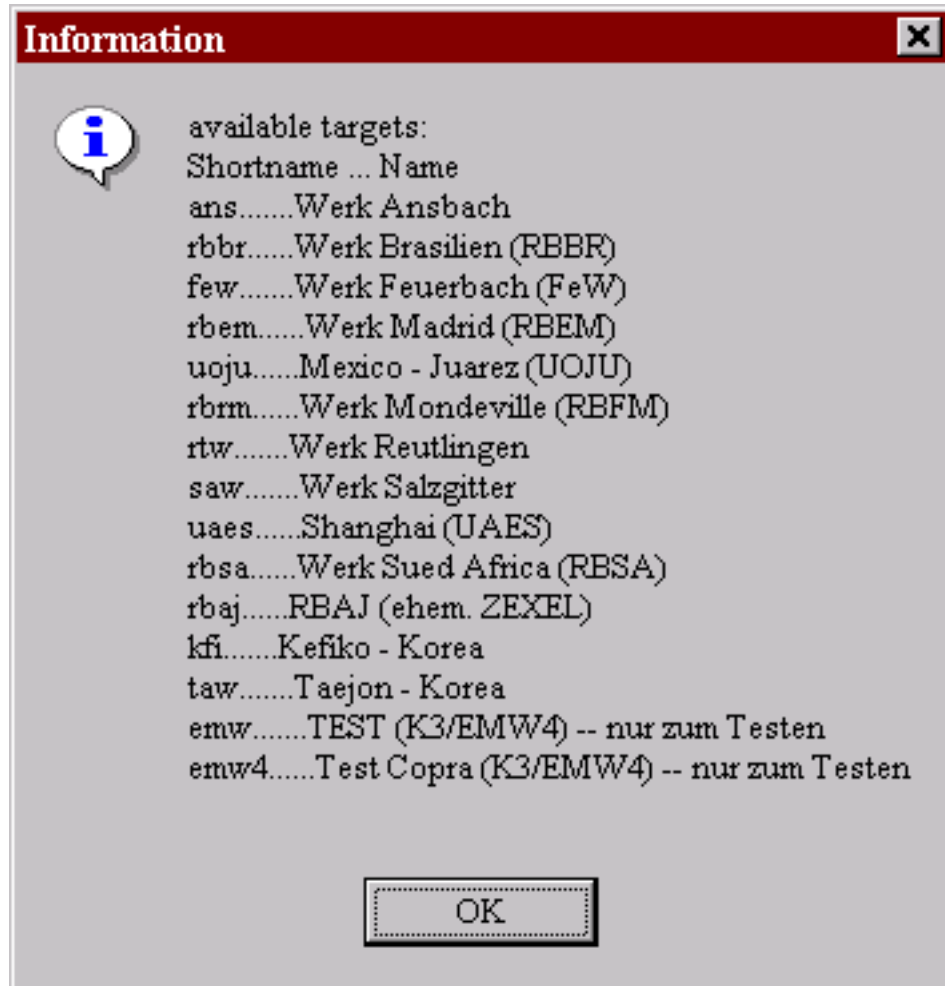


Figure 5: target information window

Show a dialog with the shortname and name of the targets.

ECU Memory Container in the intranet


There will open a window with the intranet site of the ECU Memory Container.

readme

latest Information from the ECU Memory Container work group and the program its selfe. If the reame file is changed, it will show you by start the program.

about

Information about the program ECUSend.

BOSCH 	ECU memory transfer tool	Page: 10/10
	Chapter: Configuration Parameters	Date: State:

Configuration Parameters

Company (—company)
BOSCH

Language (—lang)
English

Treatment of content for Xrefs (—xrefcontent)
Xref content is not shown

Specifying
”

Treatment of filenames in graphics (—figname)
Filenames for graphics are shown

Treatment of width and height attributes of graphics (—figdimension)
Width and height of graphics is not considered

Titlepage Graphic (—graphic)
No title graphic specified

Logo Graphic (—head-logo)
bosch.eps

Fixtext File (—fixtext)
I:\programme\mm3\mmapps\msrrep\lib\msrrep_ft.xml

Output of Local Administrative Data (—admindata)
Local administrative data is output

Filename
C:\Lokal_mm\ECUSend\doc\ecusend.SGM

MetaMorphosis-Version
3.2

Form Version
2.0 (MetaPage)

Date
05/11/2001 12:59:37