

TextBridge™

OCR for Windows

QUICK START

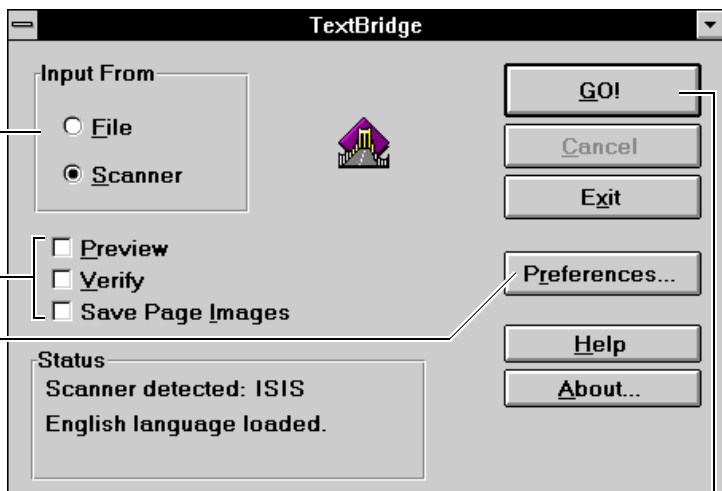
◁ From Program Manager, double-click the TextBridge icon



› Specify the page image source for OCR

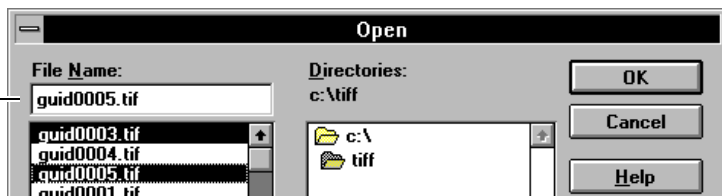
fi Select tools to interact with OCR (optional)

fi Specify Preferences to control OCR (optional)



◦ Click GO! to start the OCR process

— If you selected Input From File (step 2), specify in the Open dialog the TIFF file(s) to be processed, then click OK





PREFERENCES

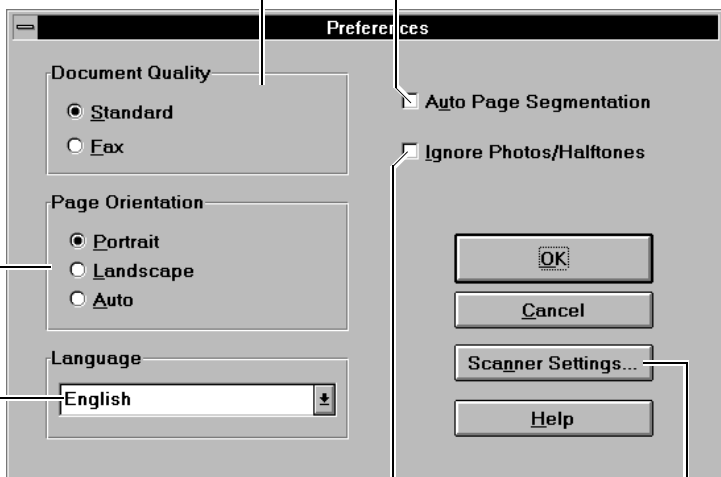
Click **Preferences...** to fine-tune OCR. Your preferences become the new defaults until you change them again.

Specify Fax for TIFF files originating from fax modems, or for hard copy faxes to be scanned

Define orientation of pages (use Auto to have TextBridge determine orientation automatically)

Specify the primary language of the document

If document has multiple columns, activate this pre-processing stage



If document contains halftones, use this filter to improve OCR accuracy and speed

Click this button to set scanner-specific controls

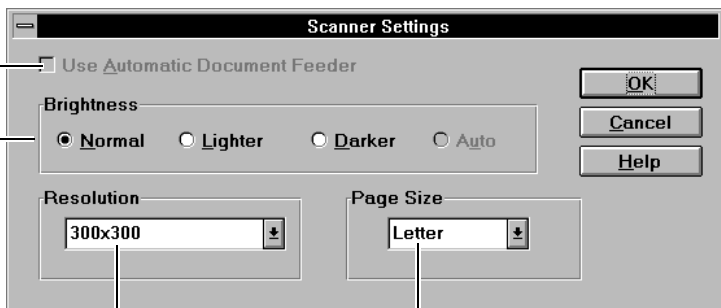


SCANNER SETTINGS

To control your ISIS scanner, select **Scanner Settings...** from the Preferences dialog. (**Note:** Define TWAIN scanner settings in the TWAIN source driver native interface.)

Click to use the ADF (if your scanner has one)

Adjust to improve OCR; specify Auto for best results (if available for your scanner)



Specify resolution at which pages are to be scanned

Specify the size of the pages (scan area)

PREVIEW

In the Main dialog, click Preview, then click GO! to display the page image in the Preview window.

Preview toolbox

Edit Zone



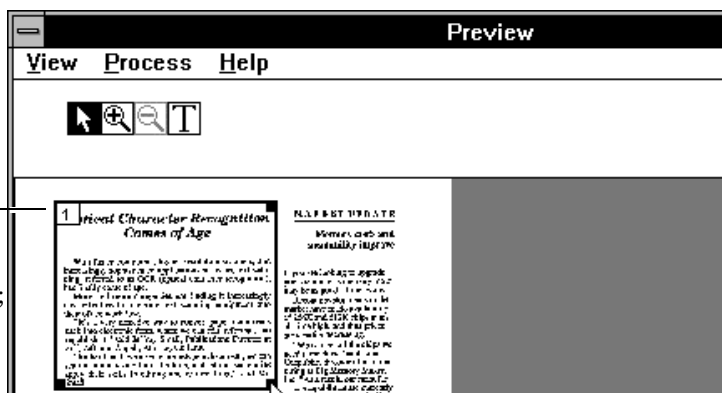
Create Zone

Zoom In

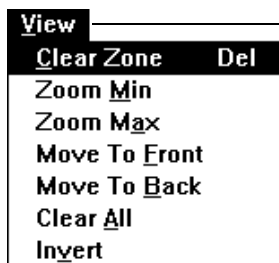
Zoom Out



To create a zone, select the Create Zone tool, point and click in the page area, then drag the mouse



To resize the zone, select the Edit Zone tool, click, hold, and drag a corner handle; to move the zone, click and hold inside the zone, and drag



View commands let you clear the selected zone, zoom in and out on the page, move the selected zone, clear all zones, and invert the page

Process commands let you process all pages to the same zone; process the current page, then preview next page; or cancel the page

Process

This Page

All Pages

Cancel Page

VERIFY

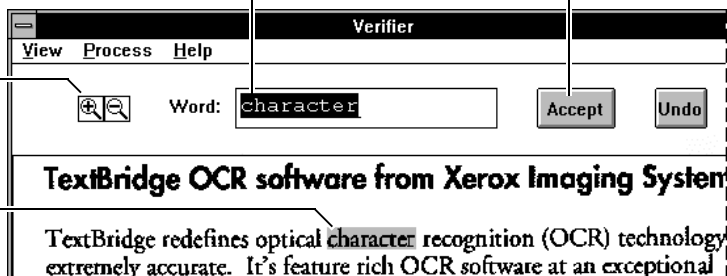
From the main dialog, click Verify, then follow the Quick Start steps to begin OCR and display the Verify window.

Edit the word here if it is incorrect

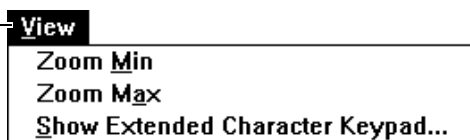
Click Accept when the word is correct

Use zoom tools to magnify or reduce the page image

For context, the word is highlighted in the page image



View commands let you zoom in and out, and display a keypad of special characters



Process commands let you adjust verification frequency and end verification



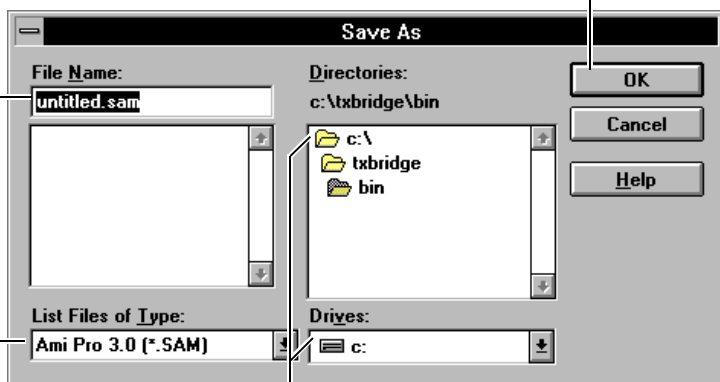
SAVE AS

When you end a job, TextBridge displays the Save As dialog so you can specify the output file name, location and text format.

Click OK to start the conversion and file output process

Type the output file name

Specify the output text format



Specify the target directory and disk