

HP OMNIGO 700LX

Communicator Plus



Your
Mobile
Business
Centre.

With voice, fax, SMS, e-mail and powerful PIM functions, the HP OmniGo 700LX communicator plus is more than a business communicator. It's your mobile business centre.

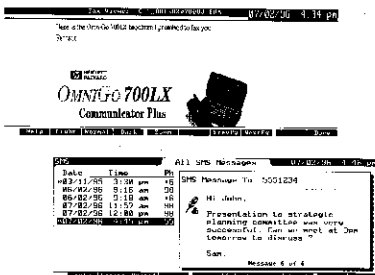
This revolutionary business tool helps today's professionals stay connected and in touch. It combines HP's award-winning HP 200LX palmtop PC and Nokia's cellular phone technology, giving you the power of communication in a portable, convenient, easy-to-use configuration. Dock a Nokia compatible cellular phone* and immediately send or receive short messages and faxes. Dial into your e-mail wirelessly from an airport halfway around the world. Fax a confidential proposal from your hotel lobby. Manage your appointments. Compose memos on the go. Work on Lotus 1-2-3 spread sheets anytime. With the HP OmniGo 700LX communicator plus, there are no limits to what you can do.



Put the power of communication in the palm of your hand with the HP OmniGo 700LX communicator plus.



*Nokia® compatible cellular phone sold separately. The HP OmniGo 700LX communicator plus works with GSM Nokia 2110, and other Nokia compatible GSM cellular phones. Please check with retailer for a complete listing.



With the HP OmniGo 700LX communicator plus, you can send and receive faxes and short messages.

HP OmniGo 700LX Communicator Plus

Key Features

Communications**



Create, send, receive and forward faxes wirelessly.



Send messages up to 160 characters long using the Short Message Service (SMS).



Connect to your home network to access e-mail, transfer files, or browse the Internet.



"Hot button" connect***to your home cc:Mail network to send and receive e-mail messages.

** Enabled only when the phone is connected. Fax, SMS and wireless DataComm can be used in areas where full GSM or PCN network services are available.

*** cc:Mail Remote requires a cc:Mail "post office" set-up at the corporate back-end.

Business Management



Schedule appointments and create to-do lists. Get daily, weekly, monthly or 6-month views of your calendar. Select visual or audio appointment alarms.



Store names, addresses and phone numbers. Seamlessly integrated with fax and SMS applications.



Create and edit notes and reminders on the Note Taker and Memo Editor.



Set up and access databases.



Manage your finances with Pocket Quicken



Take spreadsheets with you on-the-go with Lotus 1-2-3.



Solve financial and technical problems with the HP financial calculator.



Run DOS-based applications from plug-in cards, or by downloading from a PC.



Print to IrDA-compliant printers.

Technical Specifications

Ordering Number

- HP F1206A ABB (2MB RAM)

Nokia Components

- Embedded Nokia Cellular Data Card
- Nokia cellular phone docking station

Communications

- **Fax:** supports EIA/TIA class 2 PC-Fax standards to group 3 compatible fax machines.
- **SMS:** designed to the standard ETSI 07.05 SMS Protocol for support of SMS messages of up to 160 characters long
- **DataComm:** supports built-in standard terminal emulators, file transfer and e-mail applications at data rates up to 9600 bps uncompressed (scripting capability included)
- **Voice communication:** using removable Nokia compatible cellular phone (Nokia compatible cellular phone sold separately)
- **cc:Mail® Mobile:** with remote address book update
- **PC connectivity:** traveling Software's Laplink Remote Access (requires HP F1021C Connectivity Pack)

Pocket Quicken™

- Enter and edit transactions in checking, savings, credit card and cash accounts
- Reconcile accounts
- Manage expenses
- Link to desktop Quicken® (requires separate Connectivity Software)

Lotus® 1-2-3® Release 2.4

- Large worksheets - cells available from 1 to 256 columns and 1 to 8,192 rows
- Graphics
- Database commands
- Macro creation and execution
- File linkage

Time Management

- Appointment Book
- Calendars with daily, weekly, and monthly views, to-do lists, repeating alarms, events, multi-day appointments and daily greeting
- Real-time clock, stopwatch, world time and world map

NOKIA



Please recycle. Inks used here will not interfere with recycling.

Pocket Quicken

Information Management

- Phone Book, general database, Note Taker applications
- Simple text processor with outlining and formatting

Advanced HP Calculator

- Business and scientific functions

MS-DOS 5.0

- Run off-the-shelf PC Software

Physical Specifications

- Size: 8.7 x 18.3 x 5.7cm (3.6 x 7.3 x 1.8 in)
- Weight: 397g (14oz) with batteries

Memory

- 4MB ROM containing built-in software
- 2MB of self-refreshed DRAM
- Type II PC Card slot with optional 5MB, 10MB, 20MB or 40MB disk card (includes data compression software)

Display

- CGA-compatible FSTN display
- 640 x 200 pixels
- 80 columns x 25 rows
- Zoom option

Central Processing Unit

- IBM PC/XT architecture
- 80186 CPU running at 7.9 MHz

Keyboard/Other Product Features

- Familiar QWERTY layout
- Separate numeric keypad
- 10 function keys
- 8 software application access keys

Input/Output

- Built-in 9-wire serial interfaces for connection to RS-232 devices
- Built-in infrared port
- Built-in printer drivers supporting these serial printer types: HP LaserJet, Epson FX-80, IBM ProPrinter
- Optional HP F1021B Connectivity Pack for file transfer between HP OmniGo 700LX and a MS-DOS-compatible PC

Power

- Two 1.2V AA NiCd rechargeable batteries⁺ (option for two 1.5V AA alkaline single-use batteries)
- One CR2032 lithium backup battery

⁺ Use the Nokia cellular phone A/C adapter to charge the HP OmniGo 700LX communicator plus. If your Nokia compatible cellular phone is docked onto the HP OmniGo 700LX communicator plus, both are simultaneously charged.

Software must be DOS-based, CGA screen-compatible, and fit available memory. OmniGo is a trademark of Hewlett-Packard Company. Nokia is a registered trademark of Nokia Corporation. Lotus and 1-2-3 are U.S. registered trademarks of Lotus Development Corporation. MS-DOS is a U.S. registered trademark of Microsoft Corporation. Pocket Quicken and the Pocket Quicken logo are trademarks, and Quicken is a registered trademark of Intuit Inc. cc:Mail is a U.S. registered trademark of cc:Mail, a wholly owned subsidiary of Lotus Development Corporation. All other brands and product names are trademarks or registered trademarks of their respective companies. Technical information is subject to change without notice. All displays pictured are simulated.

©1996 Hewlett-Packard Company

Printed in Singapore M0296

5964-6198LA