

Configuring SS7, MAP

OPERATING INSTRUCTIONS

Copyright

© Ericsson AB 2011. All rights reserved. No part of this document may be reproduced in any form without the written permission of the copyright owner.

Disclaimer

The contents of this document are subject to revision without notice due to continued progress in methodology, design and manufacturing. Ericsson shall have no liability for any error or damage of any kind resulting from the use of this document.



Contents

1	Overview	1
1.1	Description	1
1.2	Prerequisites	1
2	Procedure	3
2.1	Configuring MAP	3
2.2	Configuring MAP Subsystem	3
3	Recommended SS7 Parameters	5
3.1	ETSI MAP	5
3.2	ANSI-41 MAP	5
	Glossary	7
	Reference List	9





1 Overview

1.1 Description

This operating instruction describes, using an example, how to configure Signaling System 7 defined by Mobile Application Part (MAP) for the following standards:

- European Telecommunication Standard Institute (ETSI)
- American National Standards Institute (ANSI)

The procedure described in this example shows a complete configuration with usable values. For a specific customer configuration, other values may be relevant.

Note: All examples in this document are using the ETSI MAP. However, the same procedures can be applied to ANSI-41 MAP.

1.2 Prerequisites

1.2.1 Documents

For configuration parameter information, see ETSI MAP or ANSI-41 MAP Information Model.

1.2.2 Tools

Signaling Manager is supposed to be used for module configuration. For more details, see Reference [1].

1.2.3 Conditions

Before starting this procedure, ensure that the following conditions are met:

- Configuration has been performed according to "Configuring SS7 TCAP", Reference [2].

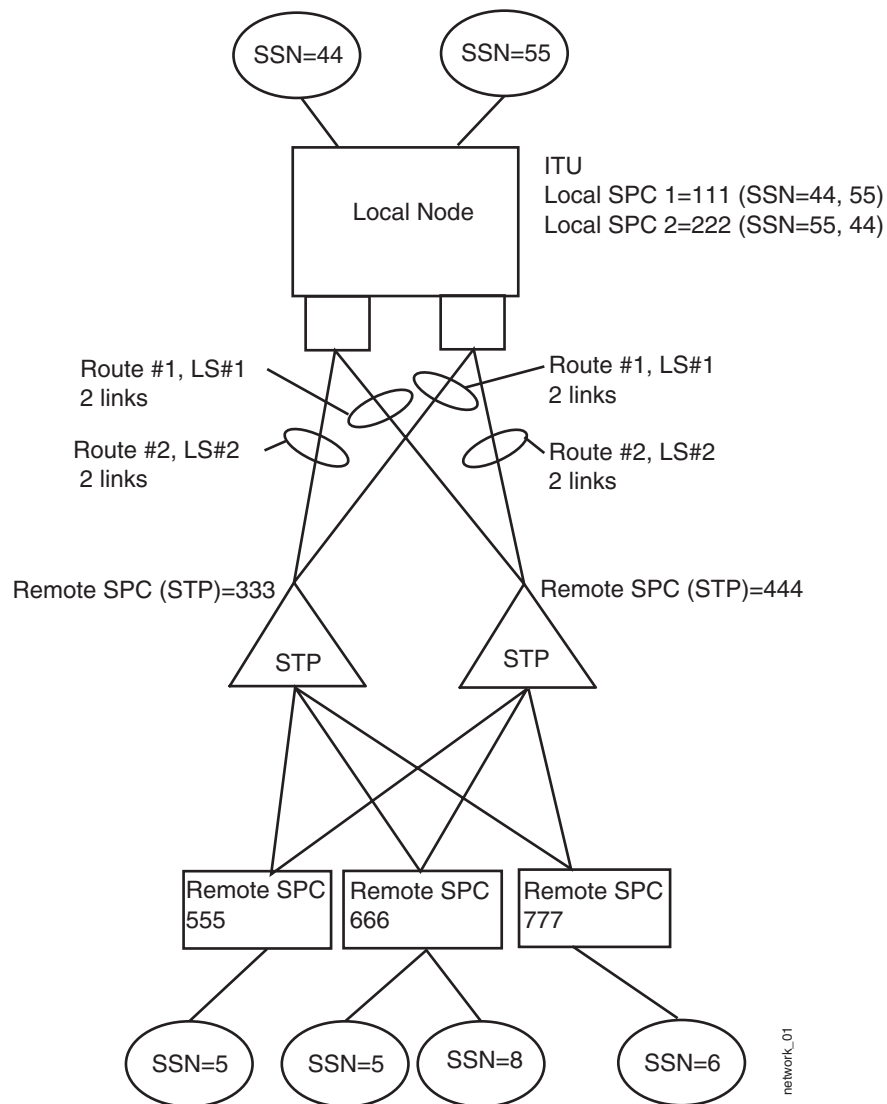


Figure 1 Example of a Network Configuration



2 Procedure

2.1 Configuring MAP

1. Add an element on **ETSI MAP**. An instance of a **ETSIMAP** is added.
2. Select the added **ETSIMAP** element to edit its properties.

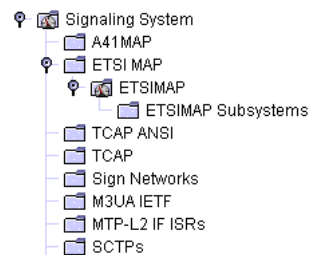


Figure 2 Added ETSI MAP element in Signaling Manager Navigation Pane

Note: You do not need to define a **ETSIMAP Subsystem** if you are not going to use orders on ETSI MAP Subsystems.

2.2 Configuring MAP Subsystem

1. Add an element on **ETSIMAP Subsystems**. An instance of an ETSI MAP Subsystem called **ETSIMAP Subsystem:[undef]** is added.

Note: As it is seen in the name of the added **ETSIMAP Subsystem:[undef]**, the **Tcap Subsystem** reference is not set by default.

2. Select the added **ETSIMAP Subsystem:[undef]**, and assign the **Tcap Subsystem** reference.

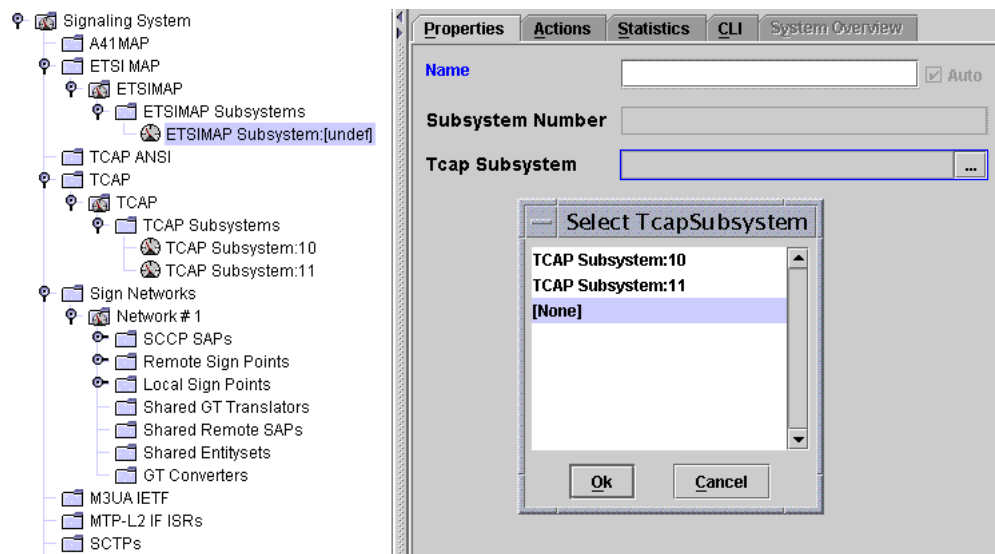


Figure 3 Select Tcap Subsystem Instances

Note: For ANSI-41 MAP Subsystem configuring **Tcap Ansi Subsystem** reference is assigned.



3 Recommended SS7 Parameters

This section contains information about specific SS7 parameters or options. Most of these values will work for an SS7 stack in a running network and are not described specifically here. In some case though, parameters may need to be modified. These parameters or options are described in the tables below.

3.1 ETSI MAP

The following properties can be found in **Signaling System/ETSI MAP/ETSIMAP**.

Table 1 ETSI MAP Properties

Property Name	Recommended Value	Comments
Max Subsystems	2	The maximum number of concurrent MAP subsystems
Max Dialogues	1000	The maximum number of dialogues available for the MAP module
Max Transactions	1000	The total number of transactions available for the MAP module

3.2 ANSI-41 MAP

Table 2 ANSI-41 MAP Properties

Property Name	Recommended Value	Comments
Max Subsystems	2	The maximum number of concurrent MAP subsystems
Max Transactions	5000	The total number of transactions available for the MAP module
Application Response Timer	100	The time-out value for a MAP-user to reply to a MAP service indication. Time in 1/10 seconds.





Glossary

TCAP

Transaction Capabilities Application Part





Reference List

- [1] *Signaling Manager User Guide*, 1553-CNA 403 0874 Uen/1
- [2] *Configuring SS7 TCAP*, 4/1543-CNA 403 0874 Uen/1