

# MTAS Communication Diversion Management Guide

MTAS

---

USER GUIDE

## **Copyright**

© Ericsson AB 2016, 2017. All rights reserved. No part of this document may be reproduced in any form without the written permission of the copyright owner.

## **Disclaimer**

The contents of this document are subject to revision without notice due to continued progress in methodology, design and manufacturing. Ericsson shall have no liability for any error or damage of any kind resulting from the use of this document.

## **Trademark List**

All trademarks mentioned herein are the property of their respective owners. These are shown in the document Trademark Information.



# Contents

<b>1</b>	<b>Introduction</b>	<b>1</b>
1.1	Prerequisites	1
<b>2</b>	<b>Overview</b>	<b>3</b>
2.1	License Control	4
2.2	Subfunctions	7
2.3	CDIV Interaction with Other Services	9
2.4	Traffic View	14
2.5	Configuration View	16
<b>3</b>	<b>Subscription Rules</b>	<b>19</b>
3.1	Rule Evaluation Points	26
<b>4</b>	<b>Find the Target</b>	<b>29</b>
<b>5</b>	<b>Handle to Headers</b>	<b>31</b>
<b>6</b>	<b>Handle History-Info Headers</b>	<b>33</b>
6.1	Check Maximum Number of Diversions in Network	33
<b>7</b>	<b>Diversion Indication to Caller</b>	<b>35</b>
<b>8</b>	<b>Diversion Indication to Served User</b>	<b>37</b>
<b>9</b>	<b>Service Activated Indication to Served User</b>	<b>41</b>
<b>10</b>	<b>Presence</b>	<b>45</b>
<b>11</b>	<b>Diversion after BYE</b>	<b>47</b>
<b>12</b>	<b>CDIV Service Configuration</b>	<b>49</b>
12.1	Announcement Configuration	49
12.2	Default Voicemail Address Configuration	49
12.3	Additional Configuration	49
12.4	DTM Configuration	51
12.5	SSC Configuration	51
12.6	CDIV Administrative State Configuration	51
12.7	Wholesale for CDIV Configuration	51
12.8	Service Data Management	52



<b>13</b>	<b>Performance Management</b>	<b>53</b>
<b>14</b>	<b>Fault Management</b>	<b>55</b>
<b>15</b>	<b>Example Configuration</b>	<b>57</b>
15.1	Forward All Calls from Alice	57
15.2	Forward All Anonymous Calls	58
15.3	Forward All Video Calls	59
15.4	Forward All Calls from Coventry	59
15.5	Forward Anonymous to Voicemail and Video to David	60
15.6	Forward Video to David and Anonymous to Voicemail	61
15.7	Forward All Anonymous Video Calls	62
15.8	Multiple Independent Rules	63
15.9	Forward Calls Based on Presence	64
15.10	Forward Calls after Different No-Answer Time Periods	65
15.11	Forward Call Upon DNDCF Service Activation	66
15.12	Forward Call Upon DNDCF Service Activation Playing Generic Announcement	67
15.13	Forward Calls at Given Periods	68
15.14	Forward Calls Based on Served Identity	68
15.15	Operator Forward Calls on Anonymous and after Served User Rules Operator Forward Calls on Not-Registered	69



# 1 Introduction

This document describes how to configure the Communication Diversion (CDIV) service in the MTAS.

## 1.1 Prerequisites

It is assumed that the user of this document is familiar with the O&M area, in general.

### 1.1.1 Licenses

To enable basic services in the MTAS, the MMTel license must be installed.

To control the advanced CDIV service, the MMTel Extended license must be installed. For more information about the MTAS licenses, refer to *MTAS Licenses*.

### 1.1.2 Documents

Before starting any procedure in this document, ensure that the following documents are available:

- *Managed Object Model (MOM)*
- *Ericsson Command-Line Interface User Guide*

### 1.1.3 Conditions

The following condition must apply:

An Ericsson Command-Line Interface (ECLI) session in Exec mode is in progress.





## 2 Overview

The CDIV Supplementary Service enables a served user to have the network redirect communication to another user. This applies to communication addressed to the served user that meets conditions in the CDIV rule sets, and for communication redirected by the User Agent (UA) of the served user. There are three CDIV rule sets. Two rule sets in the operator part, where the first is evaluated before the user rule set, which is in the user part, and the other rule set is evaluated after the user rule set (post-evaluated). The CDIV service operates on all communications in the service format Multimedia Telephony (MMTel). The served ability of the user to originate communications is unaffected by the CDIV Supplementary Service.

Configuration of the CDIV service mainly includes the following activities:

- Divert communication
- Send indication to served user
- Manage subscription CDIV rules
- Configure CDIV on node level

Telephony communication to IMS subscribers is routed to an MTAS based on Initial Filter Criteria in the Call Session Control Function (CSCF). The CDIV function implements the CDIV PSTN/ISDN simulation services for an Application Server (AS), in conformance with the [3GPP TS 24.604 V8.4.0](#) specification.

The CDIV coexists with other simulation services on the same MTAS, for example, Communication Barring (CB) and Hold. CDIV-not-logged-in can be triggered (depending on a CM attribute `mtasMmtTermUnregBehavior` in the MMTel service) after a Session Initiation Protocol (SIP) 480 response is received in the terminating MTAS on the terminating unregistered port after an initial `INVITE` has been received and sent to S-CSCF.

For more information about the MMTel service, refer to *MTAS MMTel Management Guide*.

The CDIV function is triggered by the initial SIP `INVITE` method and actuated by data values and responses from the served UA and time-outs of the user. Depending on configuration data, the CDIV not-logged-in service can trigger the SIP 480 Temporarily Unavailable response instead of the initial `INVITE` where the triggering on the SIP 480 response is the default behavior. If 480 response code is included in any of the response code CM attributes (`mtasCDivNoReplyResponses`, `mtasCDivNotReachableResponses`, `mtasCDivBusyResponses`), CDIV service must check the rules for true condition (no reply condition, not reachable condition, busy condition). If no rules found with true condition, the default CDIV-not-logged-in action must



be executed. The CDIV function is executed at the served MTAS of the user when the served user initiates an outgoing communication, depending on configuration data set by the subscriber.

The maximum number of diversions permitted for each communication is a service provider option by the MTAS configuration. The communication is rejected when the maximum is exceeded.

When communication is diverted and AS chaining is disabled, originating services are executed internally in the terminating session case in the terminating MTAS. There is no AS chaining of originating services before the session is routed towards the new target.

When communication is diverted and AS chaining is enabled, the `INVITE` is returned to S-CSCF after retargeting, the S-CSCF initiates triggering of originating services by sending the `INVITE` to the terminating MTAS for an originating session case. AS chaining can then be performed before the session is routed towards the new target.

For more information about Originating AS chaining, refer to *MTAS SIP Management Guide*.

Although the CDIV service is provisioned and activated for the served user, a Communication Diversion attempt can be suppressed by the Flexible Service Format Selection (FSFS) service. The meaning of suppression here is that the incoming communication is handled as if the service was not active.

For more information about the FSFS service, see Section 2.3.12 Flexible Service Format Selection on page 12 or refer to *MTAS Flexible Service Format Selection Management Guide*.

## 2.1 License Control

Communication Deflection (CD) is a flavor of CDIV which does not require any rules but always diverts when triggered by a “deflection” redirect response from the served UA of the user. The CD is controlled by the MMTel Extended license on the MTAS, refer to *MTAS Licenses*.

Otherwise, CDIV determines if the communication is diverted by evaluating CDIV rules. The rules are built up with different conditions and a forward-to action together with other optional actions such as do-not-disturb and play-announcement. They can be combined in many ways to express if a communication is to be diverted and if notifications are to be sent.

The Do Not Disturb Communication Forwarding (DNDCF) option, as the diversion part of the Do Not Disturb (DND) service, is a type of CDIV that diverts incoming communication when the served user does not wish to be interrupted by incoming calls and activates the service.

The DNDCF service is implemented as the extension of the rule set of the CDIV service. The DNDCF service is controlled by the MMTel Extended License on





the MTAS. If there is no valid MMTel Extended License, then the CDIV service does not forward the communication setup attempt.

The following condition elements are not controlled by the license:

- `busy`

The served user is busy.

- `no-answer`

The served user does not answer.

- `rule-deactivated`

Used to deactivate a rule, without losing information.

The following condition elements are controlled by the license if no valid license is available on the MTAS node. Any rule containing these condition elements are ignored when the rules are evaluated for the CDIV service:

- `mmt-serv:served-identity`

The served identity of the user.

- `not-registered`

The served user is not registered.

- `not-reachable`

The served user is not reachable.

- `presence-status`

The served current presence activity status of the user.

- `cp:identity`

The calling identity of the user.

- `anonymous`

The identity of the calling user is anonymous.

- `cp:validity`

Specifies one or more time periods during which diversion is valid.

- `media`

Offered media.

- `mmt-serv:valid-periods`



Allows assembly of complex time condition based on several subconditions, for example times of day, days of week.

- `mmt-serv:invalidity`

Specifies one or more time periods during which diversion is NOT valid.

The action elements comprise the following items:

- `forward-to`

Indicating the target URI where the incoming communication is to be diverted to, and how the served user and the caller are to be handled.

- `do-not-disturb`

Indicating a DNDCF rule.

- `play-announcement`

Specifies which operator named announcement to be played to the caller.

The forward-to action has the following elements:

- `target`

Diversion target address.

- `notify-caller`

Caller can be notified.

- `reveal-identity-to-caller`

Diverted-to identity of the user can be revealed to caller.

- `notify-served-user`

Notify served user that diversion occurred.

- `notify-served-user-on-outbound-call`

Notify that diversion is active, at call attempt.

- `reveal-identity-to-target`

Served identity of the user can be revealed to diverted-to party.

The CD uses the following values of the action elements:

- `notify-caller: TRUE`
- `reveal-identity-to-caller: TRUE`



- `notify-served-user`: `FALSE`
- `notify-served-user-on-outbound-call`: `FALSE`
- `reveal-identity-to-target`: `TRUE`

Traditional call forward services can be simulated by a subset of the following CDIV condition and action elements:

- Communication Forwarding Unconditional (CFU) – the first rule contains no conditions
  - `notify-served-user-on-outbound-call` action
- Communication Forwarding on Busy (CFB) – `busy` condition
  - `notify-served-user-on-outbound-call` action
- Communication Forwarding on No Reply (CFNR) – `no-answer` condition
  - `notify-served-user-on-outbound-call` action
- Communication Forwarding Not Logged in (CFNL) – `not-registered` condition
- Communication Forwarding Not Reachable (CFNRc) – `not-reachable` condition

## 2.2 Subfunctions

This section describes the subfunctions provided by the CDIV service.

### 2.2.1 Rules Evaluation

This is a subfunction that evaluates the served subscription rules and conditions of the user that can actuate a diversion. This function is affected by the license, see Section 3 on page 19 for more information.

### 2.2.2 Find the Target

This subfunction constructs the Request URI in the outgoing `INVITE`, see Section 4 on page 29 for more information.

### 2.2.3 Handle to Headers

This subfunction checks if the served user wishes to conceal their identity and updates the `To` header as required, see Section 5 on page 31.



## **2.2.4 Handle History-Information**

This subfunction evaluates and sets the `History-Info` header used for checking the maximum number of diversions allowed for the communication, see Section 6 on page 33 for more information.

## **2.2.5 Diversion Indication to Caller**

This is a subfunction that indicates to the caller that the communication is being diverted. As a node level configuration option the subfunction Play Announcement is performed. For more information, see Section 7 on page 35.

## **2.2.6 Play Announcement**

This subfunction plays an announcement to the caller when the communication has been diverted.

There are two different ways of playing an announcement:

- Playing a regular announcement  
  
Playing an announcement by looking up the announcement code configured in the CM attribute.
- Playing a generic announcement  
  
Playing the operator-named announcement indicated in the play-announcement action element within the matched CDIV rule.

For more information about announcement handling and attributes for the CDIV service, refer to *MTAS Announcement Management Guide* and *MTAS Generic Announcement Management Guide*.

## **2.2.7 Diversion Indication to Served User**

This is a subfunction that indicates to the served user that the communication is being diverted, see Section 8 on page 37 for more information.

## **2.2.8 Service Activated Indication to Served User**

This is a subfunction that indicates to the served user that Communication Diversion rules are active. This subfunction is triggered by an originating `INVITE` on the AS-Originating. For more information, see Section 9 on page 41.



### 2.2.9 Presence

This subfunction polls the served user state, for example, “at lunch”, “offline”, see Section 10 on page 45 for more information.

### 2.2.10 Diversion after BYE

This subfunction diverts the call to a preconfigured voicemail address if `BYE` is received from the network after 200 OK for initial terminating `INVITE` is received. See Section 11 on page 47 for more details on diversion after `BYE`.

## 2.3 CDIV Interaction with Other Services

The CDIV interaction with other MTAS services is described in this section.

When communication is diverted and AS chaining is disabled, the served outgoing originating services of the user are executed internally in the terminating session when served user B's AS sets up the dialog to the diverted user C.

When communication is diverted and AS chaining is enabled, the `INVITE` is returned to S-CSCF after retargeting, the S-CSCF initiates triggering of originating services by sending the `INVITE` to the terminating MTAS. The served outgoing originating services of the user are executed in the originating session case when served user B's AS sets up the dialog to the diverted user C.

After diversion, the served terminating AS of the user is kept in the message path, and changes from a terminating AS mode to a “transit” mode. Other services act differently for this AS compared to originating or terminating AS.

For more information about Originating AS chaining, refer to *MTAS SIP Management Guide*.

### 2.3.1 Call Admission Control

This section describes the CDIV interaction with the following Call Admission Control (CAC) services:

- User Call Admission Control (UCAC)
- Group Admission Control (GCAC)

For more information about the CAC services, refer to *MTAS Call Admission Control Management Guide*.



### **2.3.1.1 User Call Admission Control**

The UCAC service does not count diverted calls. If UCAC disallows a terminating call, a Communication Forwarding on Busy (CFB) rule would be triggered.

### **2.3.1.2 Group Admission Control**

The GCAC conditionally counts the outgoing leg of diverted calls, depending on node level configuration by the operator. If GCAC disallows a terminating call, a CFB rule would be triggered.

### **2.3.2 Carrier Select**

The CDIV target can contain a Carrier Select (CS) Code.

For more information about the CS service, refer to *MTAS Carrier Select and Carrier Pre-Select Management Guide*.

### **2.3.3 Carrier Pre-Select**

The CDIV target can contain a Carrier Pre-Select (CPS) Code.

For more information about the CPS service, refer to *MTAS Carrier Select and Carrier Pre-Select Management Guide*.

### **2.3.4 Charging**

Terminating charging is performed on incoming leg (A to B) and originating charging is performed on outgoing leg (B to C).

The IMS Charging Identifier (ICID) and the Originating Inter Operator Identifier (IOI) in the `P-Charging-Vector` header within the initial `INVITE` request received by the diverting MTAS, are used for charging on incoming leg (A to B). The originating IOI received in the `P-Charging-Vector` header in responses from the diverted to party is used as the terminating IOI for charging on incoming leg (A to B).

The diverting MTAS allocates a new ICID for charging on outgoing leg (B to C). The diverting MTAS generates a `P-Charging-Vector` header containing the new ICID and the original ICID received on the incoming leg and includes it in the initial `INVITE` sent to the diverted-to party. The Originating IOI (O-IOI) and Terminating IOI (T-IOI) received in the `P-Charging-Vector` header in responses from the diverted-to party are used for charging on outgoing leg (B to C).

For more information about the Charging service, refer to *Diameter Offline Charging in MTAS* and *Diameter Online Charging in MTAS*.



### 2.3.5 Communication Barring

Incoming Communication Barring (ICB) is performed on the terminating `INVITE` before the CDIV. Outgoing Communication Barring (OCB) is performed on the diverted outgoing `INVITE`. When OCB holds up the diverted outgoing `INVITE`, the initial `INVITE` is answered by `486 Busy Here` response towards the Caller A.

For more information about the CB services, refer to *MTAS Barring and Dial Plan Services Management Guide*.

### 2.3.6 Communication Completion

The Communication Completion (CC) service interacts with the CDIV service. For the interactions, refer to *MTAS Communication Completion Management Guide*.

### 2.3.7 Communication Waiting

The Communication Waiting (CW) service interacts with the CDIV service. For the interactions, refer to *MTAS Communication Waiting Management Guide*.

### 2.3.8 Conference

The focus rejects diverted incoming calls. The focus accepts diversion of dial-out calls. For more information about the conference service, refer to *MTAS Ad-hoc Conference Management Guide*.

### 2.3.9 Customized Alerting Tones

For interactions between the Identity Presentation and the Customized Alerting Tones services, refer to *MTAS Customized Alerting Tones Management Guide*.

### 2.3.10 Dial Tone Management

The Dial Tone Management (DTM) service interacts with the CDIV service rule Communication Forwarding Unconditional (CFU). When a request is made to activate or deactivate CFU, it can result in a DTM notification being sent.

For more information about the notify types, notify messages, and DTM configuration attributes, refer to *MTAS Interface to CSCF (ISC, Ma, Pw)* and *Managed Object Model (MOM)*.



### 2.3.11 Flexible Communication Distribution

In the terminating MTAS, Flexible Communication Distribution (FCD) is started before CDIV service if `mtasFcdCDivInvocationSequenceControl` is set to 0. However, when `mtasFcdCDivInvocationSequenceControl` is set to 1, CDIV is started before FCD. In the last case, if an incoming communication is diverted by CFU or DNDCF, then FCD is never started.

For more information about the FCD service, refer to *MTAS Flexible Communication Distribution Management Guide*.

### 2.3.12 Flexible Service Format Selection

The CDIV service can be suppressed with the Flexible Service Format Selection (FSFS) service. The FSFS service can suppress the CDIV service both in the terminating registered and terminating unregistered MTAS. When the FSFS service suppresses the CDIV service, the incoming communication is processed as if that CDIV service was not active.

The CD, CFU, CFB, CFNR, CFNRc, CFNL, and DNDCF service can be configured separately to support the FSFS service. During the rule evaluation, the matched and activated rules of the suppressed CDIV service is ignored and bypassed by MTAS. MTAS does not report the charging information of the suppressed CDIV service.

It is also possible to configure the FSFS service whether to suppress a CDIV service that has voicemail target only, to suppress a CDIV service that has regular (non-voice mail) target only, or to suppress both.

If there is a service suppression by the FSFS service, MTAS determines that a CDIV service has target to voicemail if at least one of the following conditions is fulfilled:

- The target actions element contains `voicemail:internal`.
- The target actions element contains the same URI address as voicemail deposit server address. For details, refer to *MTAS Voice Mail Management Guide*.
- The target actions element contains the same URI address with the one that is used as the value for one of the configured `mtasFsfVoiceMailAddress` attributes.

For more information about the FSFS service, refer to *MTAS Flexible Service Format Selection Management Guide*.





### 2.3.13 Hold Communication

The Hold Communication service does not act in the MTAS of the served user (B) of CDIV, if the communication is diverted (to C), only in the ASs of the end user.

For more information about the Hold Communication service, refer to *MTAS Hold Communication Management Guide*.

### 2.3.14 Identity Presentation

This section describes the CDIV interactions with the following Identity Presentation services:

- Flexible Identity Presentation (FIP)
- Originating Identity Presentation (OIP)
- Originating Identity Restriction (OIR)
- Terminating Identification Presentation (TIP)
- Terminating Identification Restriction (TIR)

For more information about the Identity Presentation services, refer to *MTAS Identity Presentation Management Guide*.

#### Flexible Identity Presentation

If the served user has the FIP service active, then the FIP service is started on the forwarded call leg. The FIP service will add the “privacy=history” string after the served identity of the user in the `history-info` header to protect it from being revealed to other users.

#### Originating Identity Presentation

The P-Asserted-Identity remains unchanged by the CDIV.

#### Originating Identity Restriction

The `Privacy` header “history” is escaped within the `hi-targeted-to-uri` field (in the `History-Info` header) containing the diverting identity of the user in the `INVITE` message, if the served user has OIR.

**Note:** No conversion from tel URI is required since the last History-Info entry containing the diverting identity of the user always contains a SIP URI.

The `To` header is changed to the targets URI if the served user has OIR.

The CDIV target can include the Ad-hoc presentation code.



When the CLIR Interworking service is unlocked and if the calling party has Originating Identity Restriction active, the subscriber defined `cp:identity` rules are not evaluated.

For more information about the Identity Presentation services, refer to *MTAS Identity Presentation Management Guide*.

### Terminating Identification Presentation

A `P-Asserted-Identity` and `History-Info` header field received in the diverting AS is passed unmodified to the originating entity. The originating S-CSCF is responsible for the interpretation of the `Privacy` header field.

### Terminating Identification Restriction

A `P-Asserted-Identity` header field received in the diverting AS is passed unmodified to the originating entity.

If the served user has TIR, the `Privacy` header field is included in the 181 (“Call is Being Forwarded”)/183 response.

If the served user has TIR, the `Privacy` header “history” is escaped within the `hi-targeted-to-uri` field containing the diverting identity of the user in the `History-Info` header passed to the originating entity in all responses. This applies if the `History-Info` header was included by the MTAS or was already in the response. The originating CSCF is responsible for the interpretation of the `Privacy` header field.

**Note:** Conversion from tel URI to SIP URI may be required because the `History-Info` can contain a tel URI in the last `History-Info` entry and tel URI do not support the `Privacy` header.

## 2.3.15 Priority Call

If the user has the Priority Call service, the `priority` header is set in the `INVITE`.

## 2.3.16 Video Fallback to Audio

Calls diverted by CDIV service are subject to the Video Fallback to Audio service.

For more information about the Video Fallback to Audio service, refer to *MTAS Video Fallback to Audio Management Guide*.

## 2.4 Traffic View

CDIV traffic is handled in the following steps:



1. Service Invocation – an event triggers the execution of CDIV, for example, initial `INVITE` from the caller.
2. Rule Evaluation - The CDIV evaluates the rule sets of the operator and the served user, and determines if the communication is to be diverted immediately, or is to be diverted if certain events occur, or is not to be diverted.
3. Diversion Actuation – either the Rules Evaluation step decides that the communication is to be diverted immediately, or an event identified in Rules Evaluation occurs.
4. Send Indications – when the communication is going to be diverted or when the service is active, indications can be sent to the caller and served user.
5. Diversion – the communication is diverted to the target address.

The traffic view of the CDIV is shown in Figure 1. The service is triggered by the initial `INVITE` over IMS Service Control Interface (ISC).

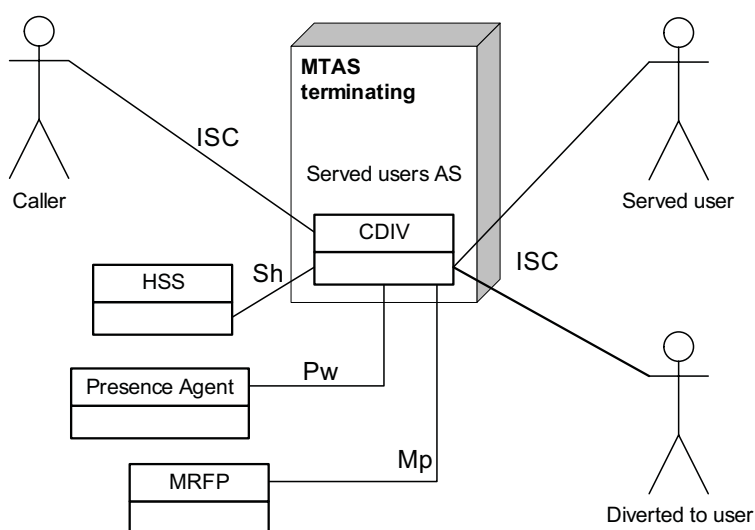


Figure 1 Main Traffic View of CDIV

The rules are fetched from the Home Subscriber Server (HSS)/Subscriber Locator Function (SLF) through the Sh/Dh interfaces. If a presence condition is included in a rule, the CDIV gets the current presence of the served user through the Pw interface.

Indication to the caller is an `INVITE` method provisional response 181 over ISC and an announcement can be played, controlled over Mp.

Indications to the served user are sent using a `MESSAGE` request over ISC.

The communication is diverted with a terminating `INVITE` to the target address over the ISC.

After diversion, the served terminating AS of the user will remain in the message path with a terminating and an originating session (depending on SIP CM parameters) in “transit” network mode.

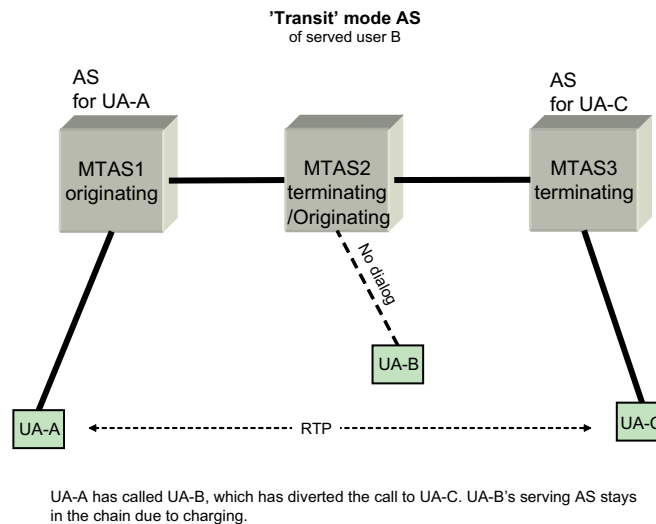


Figure 2 MTAS in Transit Mode

## 2.5 Configuration View

The node-level configuration view of the CDIV is illustrated in Figure 3.

Node-level configuration is performed by the operator where the CDIV function is customized. For example, by defining if an announcement is to be used as indication to the caller, in addition to the SIP response (181 Call is being diverted), and by defining the announcement code, which specifies the announcement to be played.

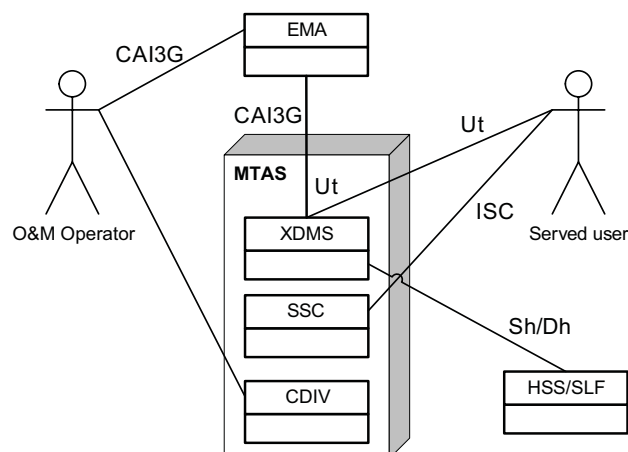


Figure 3 Configuration View of CDIV

The subscription rules are managed through the XCMS interface that provides the Ut interface (XCAP over HTTP) to the served user and CAI3G to the



operator. XDMS uses Sh (Diameter) to update the HSS. The served user accesses the XDMS directly and the operator accesses it through the Business Support System. The served user can access the SSC service through the SIP ISC interface to change diversion settings.





### 3 Subscription Rules

The subscription rules are expressed with XML, defined by a schema and following the structure illustrated in Figure 4.

The rule set consists of zero or many rules, and one rule consists of zero or many conditions and one action.

The number of rules cannot exceed the limit defined by the `<rule-limit>` element in the operator part of the service.

The number of rules is also limited by the `<rule-global-limit>` element of the `<common-data>`.

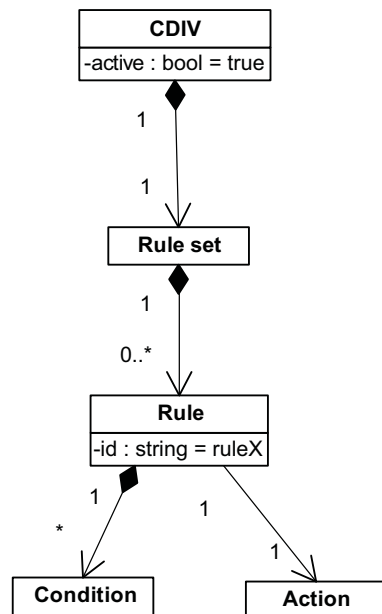


Figure 4 CDIV Subscription Elements

The element Rule has one attribute Id that identifies the rule and is independent of the evaluation order.

The top-level CDIV element has an attribute active of type Boolean. If active=true, the rule set is evaluated.

The following conditions apply to the CDIV:

- busy

This condition evaluates to true when the served user is busy. In all other cases, the condition evaluates to false. Rules with this condition are evaluated when a `busy` indication is received from the served party.

- `not-registered`

This condition evaluates to true when the served user is not registered and a valid license is available on the MTAS. In all other cases, the condition evaluates to false.

- `not-reachable`

This condition evaluates to true when there is a signaling channel outage during session setup to the served UE of the user and a valid license is available on the MTAS. In all other cases, this condition evaluates to false.

- `presence-status`

This condition evaluates to true when the current presence activity status of the served user contains a value equal to the value set for this condition and a valid license is available on the MTAS. In all other cases, the condition evaluates to false.

- `cp:identity`

This condition evaluates to true when the calling identity of the user matches with the value of the identity element and a valid license is available on the MTAS. In all other cases, the condition evaluates to false. The interpretation of the special case of a `<number-match>` element is described below. The interpretation of all the other elements of this condition is described in the [IETF RFC 4745](#) specification.

CDIV matches P-Asserted-Identity and optionally the From header with this condition.

If there are more than one P-Asserted-Identities, the CDIV iterates over all P-Asserted-Identity header lines and evaluates the CDIV rules, if one matches then the condition matches.

The From header is only used if there is no match with the P-Asserted-Identity and the CM attribute `mtasCDivUseFromHeader` is set to Enabled.

The comparison of tel URIs is based on section 4 in the [IETF RFC 3966](#) specification.

However, for CDIV, the input tel URI is only considered equal to the `<one id>` or `<except>` element in the `cp:identity` condition (the rule URI) if the number parts match and the parameters satisfy the following conditions:

- If there is a `phone-context=pvalue` parameter in the rule URI, there must be an identical `phone-context=pvalue` parameter in the input URI.
- If there is no `phone-context` parameter in the rule URI, there must be no `phone-context` parameter in the input URI.





- If there is an `ext=phonedigits` parameter in the rule URI, there must be an identical `ext=phonedigits` parameter in the input URI.
- If there is no `ext` parameter in the rule URI, any `ext` parameter in the input URI is ignored.
- If there is an `isub=subaddress` parameter in the rule URI, there must be an identical `isub=subaddress` parameter in the input URI.
- If there is no `isub` parameter in the rule URI, any `isub` parameter in the input URI is ignored.
- Any other parameters are ignored.

For CDIV, the input tel URI is considered to match the `<number match>` element in the `cp:identity` condition (the rule URI) if the first few characters of the number part of the input URI match all the characters in the rule URI. Parameters cannot appear in the `<number match>` element, so any parameter in the input URI is ignored.

The comparison of SIP URIs is based on section 19.1.4 in the [IETF RFC 3261](#) specification.

However, only the user and host parts of SIP URIs are considered when comparing for CDIV, that is, the password, port, URI parameters, and headers are ignored for comparing SIP URIs for CDIV. For a SIP URI that was converted from a tel URI, the user part of the SIP URI contains the number and parameters of a tel URI, so the comparison must first consider the host part of the SIP URI, and then must treat the user part as if it was a tel URI.

When CLIR Interworking service is unlocked and if the calling party has Originating Identity Restriction active, then the subscriber defined `cp:identity` rules are not evaluated.

For more information about the Identity Presentation services, refer to *MTAS Identity Presentation Management Guide*.

- `mmt-serv:served-identity`

This condition evaluates to true when one of its “`mmt-serv:one`” subelements match the served identity of the user and a valid Multi-Subscriber Number license is available. The “`mmt-serv:one`” subelements are interpreted similar to the subelements of `cp:identity`.

The served user is determined in accordance with section 5.7.1.3A.3 of the [3GPP TS 24.229 v11.6.0](#) specification.

- The `P-Served-User` header field must be used, if present.
- Otherwise, the content of the Request URI must be used.

If the served user cannot be determined, service rules using the served-identity condition are ignored.

- Anonymous

This condition evaluates to true when the calling party is anonymous and a valid license is available on the MTAS. The called party is anonymous if the `Privacy` header contains any privacy values except “none” or if no identity is found in both the `P-Asserted-Identity` and `From` header, as shown in Figure 5.

**Note:** The MTAS performs a simple case insensitive string search to determine if either “anonymous” or “unavailable” are in the `From` header URI.

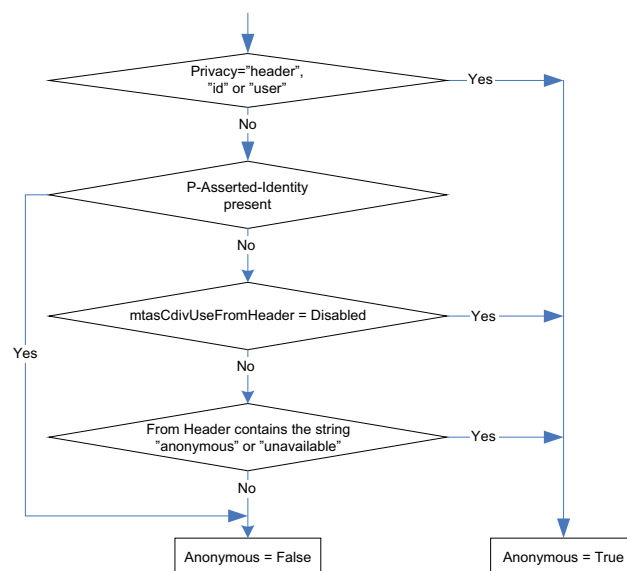


Figure 5 Anonymity Algorithm

- Cp:Validity

Specifies one or more periods. The condition evaluates to true when the current time is within the validity period expressed by one of the time periods included in this condition and a valid license is available on the MTAS.

In all other cases, the condition evaluates to false.

It expresses the rule validity period by two attributes, a starting and an ending time. The validity condition is TRUE if the current time is greater than or equal to at least one `<from>` child, but less than the `<until>` child after it.

The format is XML `dateTime`. Its canonical representation is UTC and time zones are expressed as a positive or negative duration (2005-12-24 12:00 in Stockholm, GMT+1, is expressed as 2005-12-24T12:00:00+01:00 and has the corresponding canonical representation 2005-12-24T11:00:00Z.)



When the validity period is given in local time format, the UTC offset is taken from the `<user-common-data>`. If the UTC offset is not provisioned for the user, the value from the CM attribute `mtasMmtCalUtcOffset` is used.

Times in `cp:validity` conditions are converted to UTC before being compared to the current time, also in UTC.

For further details on the configuration of time-based services in MTAS, refer to *MTAS Time Based Services Management Guide*.

- `mtt-serv:invalidity`

Specifies one or more periods. The condition evaluates to false when the current time is within the validity period expressed by one of the time periods included in this condition. In all other cases, the condition evaluates to true.

It expresses the rule invalidity period by two attributes, a starting and an ending time. The invalidity condition is FALSE if the current time is greater than or equal to at least one `<from>` child, and less than the `<until>` child after it. The invalidity condition is TRUE only when the current time is not within any of the invalidity periods.

The format is XML `dateTime`. Its canonical representation is UTC and time zones are expressed as a positive or negative duration. (2005-12-24T12:00 in Stockholm, GMT+1, is expressed as 2005-12-24T12:00:00+01:00 and has the corresponding canonical representation 2005-12-24T11:00:00Z).

When the invalidity period is given in local time format, the UTC offset is taken from the `<user-common-data>`. If the UTC offset is not provisioned for the user, the value from the CM attribute `mtasMmtCalUtcOffset` is used.

Times in `cp:validity` conditions are converted to UTC before being compared to the current time, also in UTC.

For further details on the configuration of time-based services in MTAS, refer to *MTAS Time Based Services Management Guide*.

- `mtt-serv:valid-periods`

Allows assembly of complex time condition based on of the following subconditions:

- Times of day (in form of intervals, such as 09:00-12:00)
- Days of the week (for example, Monday)
- Workdays/non-workdays (use of preprovisioned/preconfigured list of weekdays)
- Private and public holidays (use of preprovisioned/preconfigured list of holidays)



- Days of the month (for example, first day, last day, first Wednesday, the 13th)
- Calendar months
- Calendar weeks
- Daily, weekly, and monthly repetitions (with start day and repetition interval)

If any of the elements within the subconditions evaluate to TRUE, then the subcondition evaluates to TRUE.

The `mmt-serv:valid-periods` evaluates to TRUE only when all the included subconditions evaluate to TRUE.

It is also possible to mark the holidays as exception for the whole `mmt-serv:valid-periods` condition. So, when the current day is holiday, then the `mmt-serv:valid-periods` evaluates to FALSE.

For more information on the other provisioned and configured data used at evaluation of `mmt-serv:valid-periods` and further details on the configuration of time-based services in MTAS, refer to *MTAS Time Based Services Management Guide*.

- `media`

This condition evaluates to true when the value of this condition matches the `media` field in one of the “m=” lines in the SDP offered in the INVITE and a valid license is available on the MTAS.

- `no-answer`

This condition evaluates to true when the served user does not answer. In all other cases, the condition evaluates to false. Rules with this condition are evaluated upon receipt of a 180 Ringing, and are acted upon after a `no-answer` time-out is detected.

- `rule-deactivated`

This condition always evaluates to false. This can be used to deactivate a rule, without losing information. By removing this condition the rule can be activated again.

If there is no valid license available on the MTAS node, all rules containing a condition element which is controlled by the license are ignored when the rules are evaluated for the CDIV service.

The rule can contain the following actions:

- `forward-to`



This is the standard CDIV action defined in the [3GPP TS 24.604 V8.4.0](#) specification.

- `do-not-disturb`

This action indicates that the rule belongs to the Do Not Disturb Communication Forwarding service. The CDIV rule cannot contain the `do-not-disturb` action along with any of the CDIV-specific condition types such as, `busy`, `no-answer`, `not-reachable`, and `not-registered`.

- `play-announcement`

This action indicates which operator named announcement to be played to the caller.

The `forward-to` action can have the following action elements:

- `Target`

Specifies the address of the forwarding rule. It must be a valid SIP URI or tel URI, or the special value indicating voicemail (`voicemail:internal`), see Section 12.2 Default Voicemail Address Configuration on page 49.

- `Notify-caller`

An optional element that can be used to disable the default behavior that the caller is notified that the call is being forwarded.

- `Reveal-Identity-To-Caller`

An optional element that can be used to disable the default behavior that the caller receives the diverted-to identity information of the user.

- `Notify-Served-User`

An optional element that can be used to enable that the served user is notified that calls are being diverted. Default this is switched off.

- `Notify-Served-User-on-Outbound-Call`

An optional element that can be used to enable that the served user is notified that calls are being diverted when the user attempts a call. By default, this function is switched off.

- `Reveal-Identity-to-Target`

An optional element that can be used to disable the default behavior that the diverted-to party receives the served identity information of the user.

The condition elements that are not taken from the common policy schema or OMA common policy schema are defined in the `simservs` document schema.

The format of the rules is checked by the XDMS.



If the service is active, the CDIV evaluates the rules. The rules are evaluated from top to bottom, for example, rule  $n$  precedes rule  $n + 1$ , where  $n$  is the order of appearance, not the rule ID.

A rule is matched if all conditions evaluate to true, meaning that the evaluation of conditions stops when the first condition is false (lazy evaluation). Only the first matching rule and its specified `forward-to` action elements apply.

## 3.1 Rule Evaluation Points

The rules are evaluated at each actuation point, as follows:

1. `INVITE` for unregistered user
2. `INVITE` for registered user
3. Network determined user busy
4. Not-reachable time-out
5. Not-reachable response from user
6. Busy response from user
7. 180 from user (No-answer)
8. Outgoing call by served user

Each rule in the full set of rules is evaluated, from top to bottom, each time an actuating event arrives. Each time the rules are evaluated, the current values of the state of the call are used in the comparison. The time and date used in `cp:validity`, `mmt-serv:valid-periods`, and `mmt-serv:invalidity` conditions are the time and date when the evaluation of the set of rules began. This gives a consistent view of time for the evaluation of a set of rules, and means that users do not need to be unduly concerned about how long it takes to evaluate a set of rules.

All conditions cannot be evaluated to true at all actuation points, as follows:

- `not-registered` can only be true for 1
- `not-reachable` can only be true for 4 or 5
- `busy` can only be true for 3 or 6
- `no-answer` can only be true for 7

However, a rule containing a `cp:validity`, `mmt-serv:valid-periods`, or `mmt-serv:invalidity` condition can be false at actuation point 2, but true at actuation points 3, 4, 5, 6, or 7. The reason for diverting at actuation point 4-5 may not be `not-reachable`, the reason for diverting at actuation



point 3 or 6 may not be busy, and the reason for diverting at actuation point 7 may not be no answer.

When the rules are evaluated at actuation point 8, only the presence-status, media, cp:validity, mmt-serv:valid-periods, mmt-serv:invalidity and rule- deactivated conditions are evaluated in each rule. All busy, not-registered, cp:identity, anonymous, not-reachable, and no-answer conditions are considered to evaluate to TRUE during rule evaluation at actuation point 8.

When CLIR Interworking service is unlocked and if the calling party has Originating Identity Restriction active, then the subscriber defined cp:identity rules are not evaluated.

For more information about the Identity Presentation services, refer to *MTAS Identity Presentation Management Guide*.

See Section 15 on page 57 for examples of different rule sets.

The mmt-serv:served-identity condition is evaluated at each actuation point:

- For each served-identity condition, it is checked if the user has any matching alias in IRS. This is done by iterating through all PUIs in IRS and matching them against the served-identity condition. There must be at least one PUI which matches.
- Within a served-identity condition of a Communication Diversion rule, each one element must have a unique ID value.
- The served-identity element can contain only the mmt-serv:one subelements.







## 4 Find the Target

If the `target` action element contains a SIP URI or a tel URI, the CDIV replaces the Request URI of the incoming `INVITE` with the value from the `target` action element when constructing the outgoing `INVITE`.

If the request URI is in a tel format, this is converted to an equivalent SIP URI format. The domain portion of the SIP URI is taken from the domain included in the default PUI obtained from the IRS for the served user.

### Example of tel URI conversion:

Default PUI: `userC@domain1.com`

Request URI: `tel:+44247633333`

SIP URI included in `History-Info` header:

`sip:+44247633333@domain1.com;user=phone`

A `cause-param` SIP URI attribute is added to the Request URI. The `cause-param` is embedded in the Request URI. The value is set according to the diversion conditions as follows:

- Communication forwarding busy, the cause value is 486
- Communication forwarding no reply, the cause value is 408
- Communication Forwarding Unconditional, the cause value is 302
- Communication Deflection (Immediate response), the cause value is 480
- Communication Deflection (during alerting), the cause value is 487
- Communication Forwarding Not Logged in, the cause value is 404
- Communication Forwarding on Not Reachable, the cause value is 503
- Do Not Disturb Communication Forwarding, the cause value is 480





## 5 Handle to Headers

If the served user does not want to reveal its identity to the diverted-to party, then the  $T_O$  header must be changed to the URI of the target. The served user does not want to reveal its identity when one of the following conditions holds true if the served user has the subscription option **reveal-identity-to-target** set to false.

**Note:** In all other cases, the  $T_O$  header must not be changed.





## 6 Handle History-Info Headers

This section describes the handling of the `History-Info` header.

### 6.1 Check Maximum Number of Diversions in Network

The CDIV checks if diverting the communication exceeds the number of diversions allowed within the network, defined by the attribute `mtasCDivMaxNoOfDiversions`. The number of diversions is calculated by counting the `History-Info` entries with a CDIV `cause-param` SIP URI attribute. Cause attributes which are valid for Communication Diversion are explained in Section 6.1.2 Set `History-Info` Header on page 34.

If the number of diversions is equal or greater than the specified limit, defined by the attribute `mtasCDivMaxNoOfDiversions`, the communication is released.

The following responses apply:

1. If Communication Diversion condition busy was present in the matched rule, a 486 (Busy here) is sent.
2. Otherwise, 480 (Temporarily unavailable) is sent.

In both cases, a `Warning` header field indicating that the communication is released owing to the extension of diversion hops (48x, warning: 399 `mtas.operator1.com` "Too many diversions") is sent.

#### 6.1.1 Example of Counting in Branched Diversions

It is assumed that other services, for example, call hunting, add `History-Info` header entries.

Figure 6 shows CFB (486), Deflection after ringing (487), hunt group (xyz) no response, hunt group (xyz), CFB (486), hunt group (xyz) no response and CFU(302). Only the CDIV `cause-param` attributes are counted.



<sip:B@op2.com?Reason=SIP;cause=486;text="Busy Here">;index=1,  
<sip:C@op3.com;cause=486?Reason=SIP;cause=302;text="Moved Temporarily">;index=1.1  
<sip:D@op7.com;cause=487>;index=1.1.1  
<sip:D2@op4.com;cause=xyz>;index=1.1.1.1  
<sip:D3@op4.com;cause=xyz?Reason=SIP;cause=600;text="Busy Everywhere">;index=1.1.1.2  
<sip:E@op5.com;cause=486>;index=1.1.1.2.1  
<sip:E2@op5.com;cause=xyz>;index=1.1.1.3  
<sip:G@op7.com;cause=302>;index=1.1.1.3.1

Count = 4

**Note:** xyz is a non-diversion cause, for example, hunt groups.

Figure 6 Example History-Info

## 6.1.2 Set History-Info Header

Two entries are added to the History-Info header field if there is no History-Info header present or the last entry does not contain the served user identity. Only the second type of entry is added if it is a subsequent diversion.

**Note:** CDIV does not add tel URIs to History-Info headers because the tel URI scheme does not support the URI cause attributes, Privacy header attributes, or Reason header attributes. All tel URIs must be converted to SIP URIs.

### Example of tel URI conversion:

Default PUI: userC@domain1.com  
Request URI: tel:+442476333333  
SIP URI included in History-Info header:  
sip:+442476333333@domain1.com;user=phone



## 7 Diversion Indication to Caller

When Communication Diversion occurs and if action element **notify-caller** is true, then a 181 (Call Is Being Forwarded) response is sent towards the caller (A). The 181 (Call Is Being Forwarded) response contains the P-Asserted-Identity header field, the History-Info header field, and conditionally the Privacy header field.

The P-Asserted-Identity includes the URI of the served user.

The 181 response is sent on the existing SIP dialogue if one exists.

**Note:** The CDIV information in the History-Info header field is identical to the CDIV information in the History-Info SIP INVITE message sent in the forward direction, see Section 6 on page 33.

The MTAS does not require a provisional reliable acknowledgment to the 181 (Call Is Being Forwarded) response. This minimizes the number of messages processed by the MTAS. If the INVITE contains 100rel in the Required header, the MTAS requires a provisional reliable acknowledgment to the 181 (Call Is Being Forwarded) response.

Also, CDIV can initiate a Network Announcement to be included towards the caller to inform about the diversion. The Announcement is played as a configuration option.







## 8 Diversion Indication to Served User

When Communication Diversion occurs and if action element **notify-served-user** is true, then a SIP MESSAGE request is sent with information text copied from the value stored in `mtasCDivServedUserNotifyMessage`, see Figure 7 and Example 1.

This MESSAGE request is sent out of dialog. An Accept-Contact header contains a feature tag part as specified in `mtasMmtPrimaryFeatureTag`. If `mtasMmtPrimaryFeatureTag` is defined with a feature tag part such as `urn:urn-xxx:3gpp-service.ims.icsi.mmtel` the Accept-Contact header contains two feature tags. This is because 3GPP uses two variants of feature tag, namely `g.3gpp.icsi-ref` and `g.3gpp.icsi_ref`. They have the same feature tag value: `urn:urn-xxx: 3gpp-service.ims.icsi.mmtel`.

For more information about the `mtasMmtPrimaryFeatureTag`, refer to *MTAS MMTel Management Guide*.

The MESSAGE request is sent by the S-CSCF that sent the INVITE to the MTAS. To achieve this, the MESSAGE request contains a Route header derived from the second Route header received in the INVITE, which addresses the S-CSCF that sent the INVITE. The SIP URI consists of the hostport part of the second Route header, a uri-parameter “lr” to indicate that the request must be subject to loose routing, and a uri-parameter “orig” to indicate that the request is to be treated as if it were a new request sent by the served user.

For more information about the SIP URI, refer to the [IETF RFC 3261](#) specification.

The P-Asserted-Identity is the served user identity and P-Charging-Function-Addresses is taken from the received INVITE.

The P-Charging-Vector contains an `icid-value` parameter, whose unique value is generated by the MTAS.

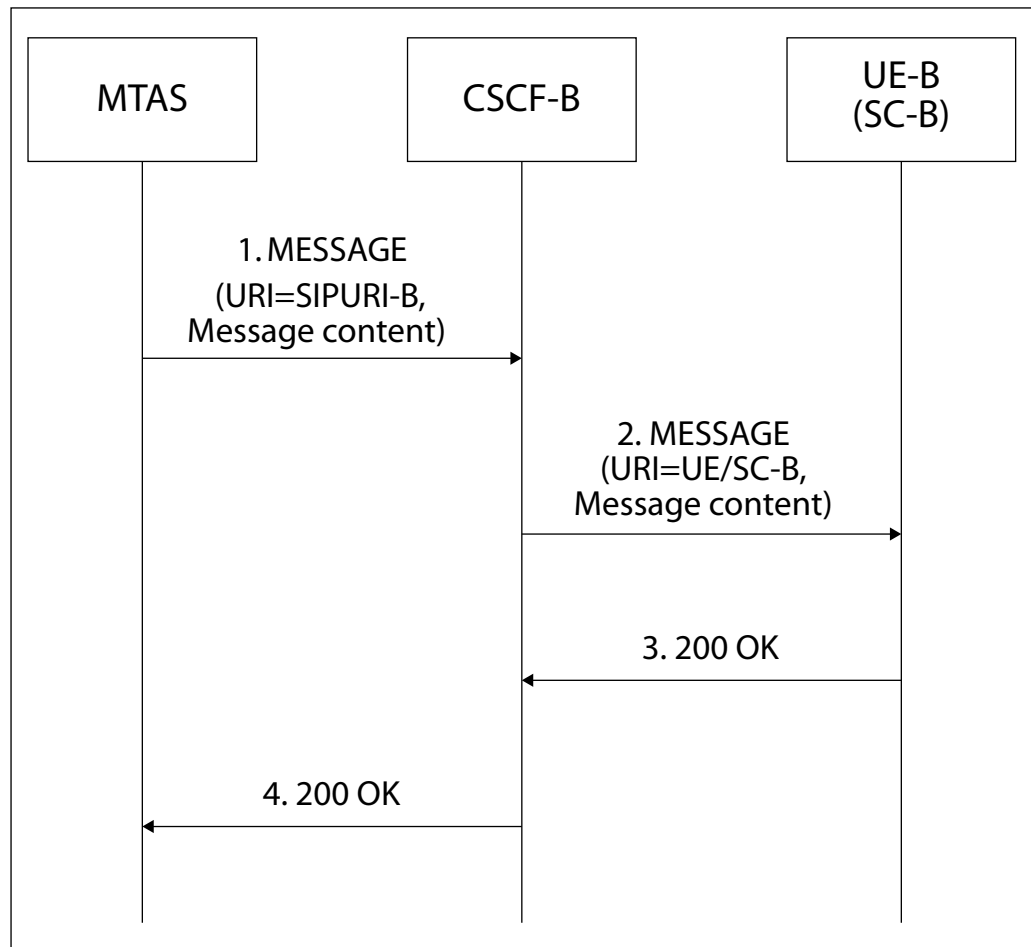


Figure 7 Diversion Indication to Served User

If a response other than 200 OK is received, basic behavior is applied, and no action is taken by CDIV.



```
MESSAGE sip:userB@operator1.com SIP/2.0
Via: SIP/2.0/TCP user1pc.domain.com:5083;branch=z9hG4bK776sgdkse
Route: <sip:scscf1.operator1.com;lr;orig>
Max-Forwards: 70
From: mtas@operator1.com;tag=49583
To: sip:userB@operator1.com
Call-ID: asd88asd77a@1.2.3.4
CSeq: 1 MESSAGE
Accept-Contact:*;g.3gpp.app_ref="urn%3Aurn-xxx%3A3gppservice.
ims.icsi.mmtel";g.3gpp.app-ref="urn%3Aurn-xxx%3A3gppservice.
ims.icsi.mmtel"
P-Charging-Function-Addresses: ccf=ccf1.operator1.com
P-Charging-Vector: icid-value=mOTin47cd9c62a033900100000f8e
P-Asserted-Identity: <sip:userB@operator1.com>
Content-Type: text/plain
Content-Length: --
```

Communication Diverted

*Example 1    Diversion Indication to Served User*





## 9 Service Activated Indication to Served User

This is performed on outbound call (at CDIV trigger points) from served user, in the originating AS.

The rule set is searched for non-deactivated rules that are currently valid and that match the media and presence of the outbound call. If any rule with the action element **notify-served-user-on-outbound-call** is matched, then a MESSAGE request is sent with information text copied from the value in `mtasCDdivOutgoingCallMessage`, see Figure 8 and Example 2.

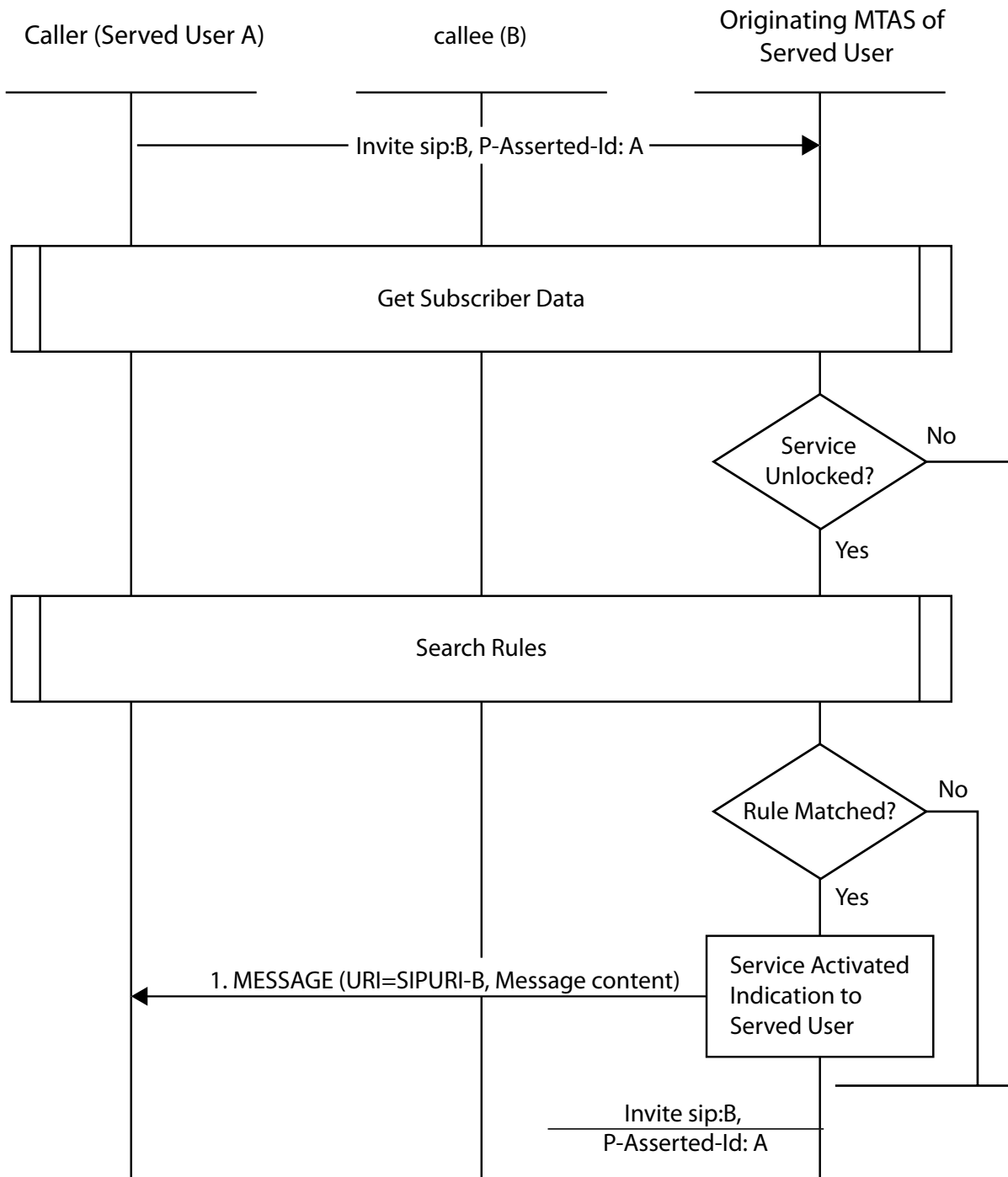


Figure 8 Service Activated Indication to Served User

The continuation of the MESSAGE and the INVITE flows are in different dialogs that are treated separately.

The Diversion Indication to served user MESSAGE flow is as in Figure 8.



This MESSAGE request is sent out of dialog. An Accept-Contact header contains a feature tag part as specified in `mtasMmtPrimaryFeatureTag`. If `mtasMmtPrimaryFeatureTag` is defined with a feature tag part such as `urn:urn-xxx:3gpp-service.ims.icsi.mmtel`, the Accept-Contact header contains two feature tags because 3GPP uses two variants of the feature tag, `g.3gpp.icsi-ref` and `g.3gpp.icsi_ref`. They have the same feature tag value: `urn: urn-xxx: 3gpp-service.ims.icsi.mmtel`.

For more information about the `mtasMmtPrimaryFeatureTag`, refer to *MTAS MMTel Management Guide*.

The MESSAGE request is sent by the S-CSCF that sent the INVITE to the MTAS. To achieve this, the MESSAGE request contains a Route header which includes the SIP URI of the S-CSCF that sent the INVITE. The SIP URI includes a uri-parameter “lr” to indicate that the request must be subject to loose routing, and a uri-parameter “orig” to indicate that the request is to be treated as if it were a new request sent by the served user.

For more information about the SIP URI, refer to the [IETF RFC 3261](#) specification.

The P-Asserted-Identity and P-Charging-Function-Addresses are taken from the received INVITE.

The P-Charging-Vector contains an `icid-value` parameter, whose unique value is generated by the MTAS.

```
MESSAGE sip:userA@operator1.com SIP/2.0
Via: SIP/2.0/TCP user1pc.domain.com:5082;branch=z9hG4bK776sgdkse
Route: <sip:scscf1.operator1.com;lr;orig>
Max-Forwards: 70
From: mtas@operator1.com;tag=49583
To: sip:userA@operator1.com
Call-ID: asd88asd77a@1.2.3.4
CSeq: 1 MESSAGE
Accept-Contact:*;g.3gpp.app_ref="urn%3Aurn-
xxx%3A3gppservice.ims.icsi.mmtel";
g.3gpp.app_ref="urn%3Aurn-xxx%3A3gppservice.ims.icsi.mmtel"
P-Charging-Function-Addresses: ccf=ccf1.operator1.com
P-Charging-Vector: icid-value=mOTin47cd9c60b733900100000f8d
P-Asserted-Identity: <sip:userA@operator1.com>
Content-Type: text/plain
Content-Length: --
```

You have active diverts

*Example 2 Service Activated Indication to Served User*







## 10 Presence

The CDIV acts as a limited watcher and polls the presence status activity information from the Presence Agent only when a CDIV rule containing a `presence-status` condition is evaluated, and only once during the same session setup.

Rules containing the `presence-status` are only evaluated if a valid license is available on the MTAS node. If there is no valid license, there is no request for `presence-status` activity information.

CDIV uses the SUBSCRIBE method to retrieve presence state information, with Expires:0 in the request (and 200 OK) to get an immediate Notify. The subscription is then expired.

The SUBSCRIBE message is sent with the default PUI of the served user, obtained from the Implicit Registration Set, in the `P-Asserted-Identity` header and in the Request URI, so that the Presence Agent treats the request as if the served user were reading its own presence status, which is always allowed.

The presence activities element that can be matched is a part of the person data structure.

To reduce the size of the notification message, the CDIV polls the activity element using event notification filtering. Event notification filtering is a mechanism for the watcher to control the content of notifications.

If the Presence Agent does not understand the event notification filter in the SUBSCRIBE, it still responds with a NOTIFY, but it contains the whole presence record. Therefore, there is no need to check that the Presence Agent supports event notification filtering.

The SUBSCRIBE message is sent through the S-CSCF that sent the INVITE to the MTAS, so that the MTAS does not have to know which Presence Agent holds the information for each subscriber. To achieve this, the SUBSCRIBE message contains a `Route` header derived from the second `Route` header received in the INVITE, which addresses the S-CSCF that sent the INVITE. The SIP URI consists of the hostport part of the second `Route` header, a URI attribute `lr` to indicate that the message is to be subject to loose routing, and a URI attribute `orig` to indicate that the message is to be treated as if it were a new request sent by the served user.

If AS chaining is enabled, the uri-parameter “orig” is added to the `Route` header to indicate that the message must be treated as if it were an originating request sent by the served user and also the `P-Served-User` header is added with the default PUI of the served user.



For more information about Originating AS chaining, refer to *MTAS SIP Management Guide*.



## 11 Diversión after BYE

After receiving 200 OK for initial terminating `INVITE`, MTAS can receive a `BYE` as a result of a fault somewhere in the network.

If `BYE` is received after reception of 200 OK and before the timer-configured by `mtasCdivForwardOnByeTimer` expires (`vtasCdivForwardOnByeTimer`, if there is wholesale), then CDIV performs a check on the `Reason` header. If `Reason` header matches any preconfigured value in `mtasCdivForwardOnByeReason` (`vtasCdivForwardOnByeReason`, in case of wholesale) the call is diverted to the preconfigured voicemail address.

If the timer is set to 0, then the Diversión after `BYE` feature is disabled.





## 12 CDIV Service Configuration

The CDIV service of the MTAS is controlled by the *MtasCdiv* MO and its attributes. The MO structure of the CDIV service is shown in Figure 9.

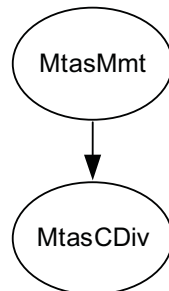


Figure 9 CDIV MO Structure

For configurable MOs and attributes related to the CDIV service, refer to *Managed Object Model (MOM)*.

### 12.1 Announcement Configuration

The CDIV plays an audio or video announcement, or both, to indicate to the caller that the communication has been diverted.

For announcement handling and CDIV announcement attributes, refer to *MTAS Announcement Management Guide*.

### 12.2 Default Voicemail Address Configuration

The default voicemail address of the voicemail server can either be set explicitly by modifying the attribute `mtasVoiceMailDepositServerAddress`, or implicitly by setting configuration data per subscriber on node level, see Section 12.8.1 Operator Subscription Level Service Configuration on page 52.

### 12.3 Additional Configuration

Additional configuration activities are listed in Table 1.

**Note:** Not all CDIV configuration activities are listed.

*Table 1 Additional Configuration Activities*

Activity	Attribute
Setting Busy Response value for the CDIV service.	mtasCDivBusyResponses
Setting Not Reachable Response value for the CDIV service.	mtasCDivNotReachableResponses
Setting timer expiring for Not Reachable Response for the CDIV service.	mtasCDivNotReachableTimer
Setting the time interval that the caller must respond within, before a session is forwarded.	mtasCDivTimer
Defining the global Communication Forwarding blacklist for the MTAS.	mtasCDivBlackList
Setting the maximum number of times the same communication is allowed to be forwarded.	mtasCDivMaxNoOfDiversions
Determining if the INVITE method response 302 causes a redirect generated by the MTAS, or if the 302 is to be passed along to the UA.	mtasCDivDeflection
Defining the contents of the MESSAGE that is sent to inform a served user that a session addressed to the served user has been diverted elsewhere.	mtasCDivServedUserNotifyMessage
Defining the contents of the MESSAGE that is sent to remind a served user, when an outgoing session is initiated, that diversions are active.	mtasCDivOutgoingCallMessage
Disabling and enabling the use of the From header when matching CDIV rules.	mtasCDivUseFromHeader
Setting No Reply Response value for the CDIV service.	mtasCDivNotReachableTimer
CDIV service on/off support for no_fork parameter in an INVITE.	mtasCDivUseFromHeader
Disabling and enabling sending of established SDP in initial INVITE towards VMS	mtasCDivAfterByeOfferEstablishedMediaTypesToTarget



For more information about the CDIV attributes, refer to *Managed Object Model (MOM)*.

## 12.4 DTM Configuration

For the DTM configuration attributes, refer to *Managed Object Model (MOM)*.

## 12.5 SSC Configuration

Diversion for the following Supplementary Services can be configured by the SSC:

- CFB, where New Destination (ND) can be configured
- CFNR, where ND, Ringing Time (RT) can be configured
- Communication Forwarding on No Reply to voicemail (CFNRVM), where RT can be configured
- CFU, where ND can be configured

For information on the activation, deactivation, and interrogation of the CDIV service through the SSCs, refer to *MTAS Supplementary Service Codes Management Guide*.

## 12.6 CDIV Administrative State Configuration

The CDIV service is enabled by setting the `mtasCDivAdministrativeState` attribute in the `MtasCDiv` MO to 1 (UNLOCKED). If the `mtasCDivAdministrativeState` is set to 0 (LOCKED), no CDIV service is provided by the MTAS.

## 12.7 Wholesale for CDIV Configuration

The CDIV service supports Wholesale. CDIV is configurable on Virtual Telephony Provider level.

Wholesale for CDIV is activated when the following attributes are set to 1 (UNLOCKED):

- The `vtasCDivAdministrativeState` attribute in the `VtasCDiv` MO
- The `mtasCDivAdministrativeState` attribute in the `MtasCDiv` MO

For more information about the Wholesale service, refer to *MTAS Wholesale Support Management Guide*.



## 12.8 Service Data Management

This section describes how to configure the service data.

### 12.8.1 Operator Subscription Level Service Configuration

The operator can activate or deactivate the CDIV service subscription for the subscriber by setting the user data using the CAI3G protocol.

For more information about the CAI3G protocol, refer to *MTAS CAI3G Interface*.

### 12.8.2 Subscriber Subscription Level Service Configuration

The user subscriber data is configured through the Ut interface. The subscriber can configure the CDIV subscription rules using the conditions and action elements.

The Ut interface and the XML schema for the Ut interface are described in *MTAS Ut Interface* and *MTAS Ut Structure*.





## 13 Performance Management

For measurements related to the CDIV service, refer to *Managed Object Model (MOM)*.





## 14 Fault Management

The CDIV service has no alarms.





## 15 Example Configuration

This section shows examples of rule configurations that can be applied for the CDIV service.

To guarantee its uniqueness, a namespace can often be a long string. XML allows a namespace to be mapped to a short string (a prefix) which makes the XML documents more readable. The mapping between each namespace and its assigned prefix as used in this section is shown in Table 2.

*Table 2 Namespace Prefix Mapping*

Prefix	Namespace	Purpose
cp	urn:ietf:params:xml:ns:common-policy	Common Policies for privacy preferences as defined by the IETF
ss	http://uri.etsi.org/ngn/params/xml/simservs/xcap	User Part of the MMTel document as defined by ETSI/ TISPAN
mmt-serv	http://schemas.ericsson.com/mmtel/services	Ericsson defined services for inclusion in the MMTel user-data part

**Note:** The order of the rules defined in a configuration is significant for the CDIV service. For examples of such rule configurations, see Section 15.5 Forward Anonymous to Voicemail and Video to David on page 60 and Section 15.6 Forward Video to David and Anonymous to Voicemail on page 61.

### 15.1 Forward All Calls from Alice

In the rule configuration shown in Example 3, the following applies for the served user:

- All incoming communication from `alice@example.com` is forwarded to `charlie@example.com`



```
<ss:communication-diversion active="true">
  <cp:ruleset>
    <cp:rule id="alice">
      <cp:conditions>
        <cp:identity>
          <cp:one id="sip:alice@example.com"/>
        </cp:identity>
      </cp:conditions>
      <cp:actions>
        <forward-to>
          <target>sip:charlie@example.com</target>
        </forward-to>
      </cp:actions>
    </cp:rule>
  </cp:ruleset>
</ss:communication-diversion>
```

*Example 3 Forward All Calls from Alice*

## 15.2 Forward All Anonymous Calls

In the rule configuration shown in Example 4, the following applies for the served user:

- All anonymous incoming communication is forwarded to voicemail.

```
<ss:communication-diversion active="true">
  <cp:ruleset>
    <cp:rule id="anon">
      <cp:conditions>
        <anonymous/>
      </cp:conditions>
      <cp:actions>
        <forward-to>
          <target>voicemail:internal</target>
        </forward-to>
      </cp:actions>
    </cp:rule>
  </cp:ruleset>
</ss:communication-diversion>
```

*Example 4 Forward All Anonymous Calls*



## 15.3 Forward All Video Calls

In the rule configuration shown in Example 5, the following is applied for the served user:

- All incoming communication containing video is forwarded to david@example.com.

```
<ss:communication-diversion active="true">
  <cp:ruleset>
    <cp:rule id="video">
      <cp:conditions>
        <media>video</media>
      </cp:conditions>
      <cp:actions>
        <forward-to>
          <target>sip:david@example.com</target>
        </forward-to>
      </cp:actions>
    </cp:rule>
  </cp:ruleset>
</ss:communication-diversion>
```

*Example 5 Forward All Video Calls*

## 15.4 Forward All Calls from Coventry

In the rule configuration shown in Example 6, the following is applied for the served user:

- All incoming communication from numbers starting with +4424 (Coventry in the U.K) is forwarded to eric@example.com.



```
<ss:communication-diversion active="true">
  <cp:ruleset>
    <cp:rule id="Coventry">
      <cp:conditions>
        <cp:identity>
          <mmt-serv:number-match starts-with="+4424"/>
        </cp:identity>
      </cp:conditions>
      <cp:actions>
        <forward-to>
          <target>sip:eric@example.com</target>
        </forward-to>
      </cp:actions>
    </cp:rule>
  </cp:ruleset>
</ss:communication-diversion>
```

*Example 6 Forward All Calls from Coventry*

## 15.5 Forward Anonymous to Voicemail and Video to David

In the rule configuration shown in Example 7, the following is applied to the served user:

- All anonymous incoming communication is forwarded to voicemail.
- All incoming communication containing video is forwarded to david@example.com.

The significance of the order of the rules is shown in this example. An anonymous video call would satisfy the conditions of the first rule (id="anon"), and the call would be diverted to voicemail@example.com.





```
<ss:communication-diversion active="true">
  <cp:ruleset>
    <cp:rule id="anon">
      <cp:conditions>
        <anonymous/>
      </cp:conditions>
      <cp:actions>
        <forward-to>
          <target>voicemail:internal</target>
        </forward-to>
      </cp:actions>
    </cp:rule>
    <cp:rule id="video">
      <cp:conditions>
        <media>video</media>
      </cp:conditions>
      <cp:actions>
        <forward-to>
          <target>sip:david@example.com</target>
        </forward-to>
      </cp:actions>
    </cp:rule>
  </cp:ruleset>
</ss:communication-diversion>
```

*Example 7 Forward Anonymous to Voicemail and Video to David*

## 15.6 Forward Video to David and Anonymous to Voicemail

In the rule configuration shown in Example 8, the following is applied for the served user:

- All incoming communication containing video is forwarded to david@example.com.
- All anonymous incoming communication is forwarded to voicemail.

The significance of the order of the rules is shown in this example. An anonymous video call would satisfy the conditions of the first rule (id="video"), and the call would be diverted to david@example.com.



```
<ss:communication-diversion active="true">
  <cp:ruleset>
    <cp:rule id="video">
      <cp:conditions>
        <media>video</media>
      </cp:conditions>
      <cp:actions>
        <forward-to>
          <target>sip:david@example.com</target>
        </forward-to>
      </cp:actions>
    </cp:rule>
    <cp:rule id="anon">
      <cp:conditions>
        <anonymous/>
      </cp:conditions>
      <cp:actions>
        <forward-to>
          <target>voicemail:internal</target>
        </forward-to>
      </cp:actions>
    </cp:rule>
  </cp:ruleset>
</ss:communication-diversion>
```

*Example 8 Forward Video to David and Anonymous to Voicemail*

## 15.7 Forward All Anonymous Video Calls

In the example rule configuration shown in Example 9, the following is applied for the served user:

- All anonymous incoming communication containing video is forwarded to videomail@example.com.

In this example, anonymous incoming communication not containing video, and incoming communication with an identifiable sender containing video, are not diverted.



```
<ss:communication-diversion active="true">
  <cp:ruleset>
    <cp:rule id="anon video">
      <cp:conditions>
        <media>video</media>
        <anonymous/>
      </cp:conditions>
      <cp:actions>
        <forward-to>
          <target>sip:videomail@example.com</target>
        </forward-to>
      </cp:actions>
    </cp:rule>
  </cp:ruleset>
</ss:communication-diversion>
```

*Example 9 Forward All Anonymous Video Calls*

## 15.8 Multiple Independent Rules

In the example rule configuration shown in Example 10, the following is applied for the served user:

- All incoming communication is forwarded, when the user is busy, to charlie@example.com.
- All incoming communication is forwarded, when the user fails to answer in a reasonable time, to david@example.com.

These rules are evaluated at different times in the call, so the order does not change the behavior.

```
<ss:communication-diversion active="true">
  <cp:ruleset>
    <cp:rule id="busy">
      <cp:conditions>
        <busy/>
      </cp:conditions>
      <cp:actions>
        <forward-to>
          <target>sip:charlie@example.com</target>
        </forward-to>
      </cp:actions>
    </cp:rule>
    <cp:rule id="logged-out">
      <cp:conditions>
        <not-registered/>
      </cp:conditions>
      <cp:actions>
        <forward-to>
          <target>sip:videomail@example.com</target>
        </forward-to>
      </cp:actions>
    </cp:rule>
    <cp:rule id="no reply">
      <cp:conditions>
        <no-answer/>
      </cp:conditions>
      <cp:actions>
        <forward-to>
          <target>sip:david@example.com</target>
        </forward-to>
      </cp:actions>
    </cp:rule>
  </cp:ruleset>
</ss:communication-diversion>
```

*Example 10 Multiple Independent Rules*

## 15.9 Forward Calls Based on Presence

In the example rule configuration shown in Example 11, the following is applied for the served user:

- Forward all calls to the secretary of the user (joyce@example.com) whenever the user is in a meeting.
- Forward all calls to the husband of the user (kevin@example.com) whenever the user is steering.



```
<ss:communication-diversion active="true">
  <cp:ruleset>
    <cp:rule id="meetings">
      <cp:conditions>
        <cp:presence-status>meeting</cp:presence-status>
      </cp:conditions>
      <cp:actions>
        <forward-to>
          <target>sip:joyce@example.com</target>
        </forward-to>
      </cp:actions>
    </cp:rule>
    <cp:rule id="steering">
      <cp:conditions>
        <cp:presence-status>steering</cp:presence-status>
      </cp:conditions>
      <cp:actions>
        <forward-to>
          <target>sip:kevin@example.com</target>
        </forward-to>
      </cp:actions>
    </cp:rule>
  </cp:ruleset>
</ss:communication-diversion>
```

#### *Example 11 Forward Calls Based on Presence*

## 15.10 Forward Calls after Different No-Answer Time Periods

In the example rule configuration shown in Example 12, the following is applied for the served user:

- Forward calls that are not answered to the secretary of the user (joyce@example.com).
- If a call is from a customer (customer@example.com), the user wants the call to ring for 10 seconds before diverting (to allow time to open contact information).
- For calls from any other user, the calls are to be diverted after 5 seconds (the default value set by the user) of not answering.



```
<ss:communication-diversion active="true">
  <ss:NoReplyTimer>5</ss:NoReplyTimer>
  <cp:ruleset>
    <cp:rule id="customer no reply">
      <cp:conditions>
        <ss:no-answer/>
        <cp:identity>
          <cp:one id="sip:customer@example.com"/>
        </cp:identity>
      </cp:conditions>
      <cp:actions>
        <ss:forward-to>
          <ss:target>sip:joyce@example.com</ss:target>
        </ss:forward-to>
        <ss:NoReplyTimer>10</ss:NoReplyTimer>
      </cp:actions>
    </cp:rule>
    <cp:rule id="no reply">
      <cp:conditions>
        <ss:no-answer/>
      </cp:conditions>
      <cp:actions>
        <ss:forward-to>
          <ss:target>sip:joyce@example.com</ss:target>
        </ss:forward-to>
      </cp:actions>
    </cp:rule>
  </cp:ruleset>
</ss:communication-diversion>
```

*Example 12 Forward Calls after Different No-Answer Time Periods*

## 15.11 Forward Call Upon DNDCF Service Activation

In the rule configuration shown in Example 13, the following is applied for the served user:

- Forward all incoming communication to the assistant of the user (assistant@myoffice.com) by activating the DNDCF service.



```
<ss:communication-diversion active=true>
  <cp:ruleset>
    <cp:rule id="do-not-disturb">
      <cp:conditions>
      </cp:conditions>
      <cp:actions>
        <ss:forward-to>
          <ss:target>sip:assistant@myoffice.com</ss:target>
        </ss:forward-to>
        <mmt-serv:do-not-disturb/>
      </cp:actions>
    </cp:rule>
  </cp:ruleset>
</ss:communication-diversion>
```

**Example 13** Forward Call Upon DNDCF Service Activation

## 15.12 Forward Call Upon DNDCF Service Activation Playing Generic Announcement

In the rule configuration shown in Example 14, the following is applied for the served user:

- The served user is in a meeting and intends to forward all incoming communication to the assistant of the user (assistant@myoffice.com) by activating the DNDCF service. The served user selects “in a meeting” announcement to be presented to the caller.

```
<ss:communication-diversion active=true>
  <cp:ruleset>
    <cp:rule id="dndcf-with-generic-announcement">
      <cp:conditions>
      </cp:conditions>
      <cp:actions>
        <ss:forward-to>
          <ss:target>sip:assistant@myoffice.com</ss:target>
          <ss:notify-caller>true</ss:notify-caller>
        </ss:forward-to>
        <mmt-serv:do-not-disturb></mmt-serv:do-not-disturb>
        <mmt-serv:play-announcement>in a meeting</mmt-serv:play-announcement>
      </cp:actions>
    </cp:rule>
  </cp:ruleset>
</ss:communication-diversion>
```

**Example 14** Forward Call Upon DNDCF Service Activation Playing Generic Announcement



## 15.13 Forward Calls at Given Periods

In the rule configuration shown in Example 15, the following applies for the served user:

- All incoming communication is forwarded to `charlie@example.com` on workdays from 9:00-12:00 and from 13:00-17:00. However the holidays are exceptions to this rule.

```
<ss:communication-diversion active="true">
  <cp:ruleset>
    <cp:rule id="working">
      <cp:conditions>
        <mmt-serv:valid-periods except-holidays="true">
          <mmt-serv:valid-days>
            <mmt-serv:day>Workday</mmt-serv:day>
          </mmt-serv:valid-days>
          <mmt-serv:valid-times>
            <mmt-serv:interval from="09:00" until="12:00"/>
            <mmt-serv:interval from="13:00" until="17:00"/>
          </mmt-serv:valid-times>
        </mmt-serv:valid-periods>
      </cp:conditions>
      <cp:actions>
        <forward-to>
          <target>sip:charlie@example.com</target>
        </forward-to>
      </cp:actions>
    </cp:rule>
  </cp:ruleset>
</ss:communication-diversion>
```

### *Example 15 Forward Calls on Workdays*

For further examples and details on the configuration of time-based services in MTAS, refer to *MTAS Time Based Services Management Guide*.

## 15.14 Forward Calls Based on Served Identity

In the rule configuration shown in Example 16, the following applies for the served user:

- The call is diverted when `sip:john.doe@office.com` is called but when the call arrives on some other ID of the same user (for example, `sip:johnny@home.com`) the call is not diverted.





```
<ss:communication-diversion active="true">
  <cp:ruleset>
    <cp:rule id="cdiv-served-id">
      <cp:conditions>
        <mmt-serv:served-identity>
          <mmt-serv:one id="sip:john.doe@office.com"/>
        </mmt-serv:served-identity>
      </cp:conditions>
      <cp:actions>
        <ss:forward-to>
          <ss:target>sip:jesse.james@office.com</ss:target>
        </ss:forward-to>
      </cp:actions>
    </cp:rule>
  </cp:ruleset>
</ss:communication-diversion>
```

*Example 16 Forward Calls Based on Served Identity*

## 15.15 Operator Forward Calls on Anonymous and after Served User Rules Operator Forward Calls on Not-Registered

In the rule configuration shown in Example 17, the following applies:

- The operator wants to forward the calls on anonymous to the voicemail. Then, consider served user rules before forward calls on not-registered to secretary.

```
<mmt-op:operator-communication-diversion activated="true">
<cp:ruleset>
  <cp:rule id="cfb-pre">
    <cp:conditions>
      <ss:anonymous/>
    </cp:conditions>
    <cp:actions>
      <ss:forward-to>
        <ss:target>voicemail:internal</ss:target>
      </ss:forward-to>
    </cp:actions>
  </cp:rule>
</cp:ruleset>
<mmt-op:ruleset-for-post-evaluation>
  <cp:ruleset>
    <cp:rule id="cfu-post">
      <cp:conditions>
        <ss:not-registered/>
      </cp:conditions>
      <cp:actions>
        <ss:forward-to>
          <ss:target> sip:secretary@example.com </ss:target>
        </ss:forward-to>
      </cp:actions>
    </cp:rule>
  </cp:ruleset>
</mmt-op:ruleset-for-post-evaluation>
...
</mmt-op:operator-communication-diversion>
```

**Example 17** *Operator Forward Calls on Anonymous and after Served User  
Rules Operator Forward Calls on Not-Registered*