

# Configuring SS7, INAP

---

## OPERATING INSTRUCTIONS

**Copyright**

© Ericsson AB 2011. All rights reserved. No part of this document may be reproduced in any form without the written permission of the copyright owner.

**Disclaimer**

The contents of this document are subject to revision without notice due to continued progress in methodology, design and manufacturing. Ericsson shall have no liability for any error or damage of any kind resulting from the use of this document.



# Contents

<b>1</b>	<b>Overview</b>	<b>1</b>
1.1	Description	1
1.2	Prerequisites	1
<b>2</b>	<b>Procedure</b>	<b>3</b>
2.1	Configuring INAP	3
2.2	Configuring INAP Subsystem	3
<b>3</b>	<b>Recommended SS7 Parameters</b>	<b>5</b>
3.1	INAP	5
	<b>Glossary</b>	<b>7</b>
	<b>Reference List</b>	<b>9</b>





# 1 Overview

## 1.1 Description

This operating instruction describes, using an example, how to configure Signaling System 7 defined by Intelligent Network Application Part (INAP) for the following standards:

- European Telecommunication Standard Institute (ETSI)

The procedure described in this example shows a complete configuration with usable values. For a specific customer configuration, other values may be relevant.

## 1.2 Prerequisites

### 1.2.1 Documents

For configuration parameter information, see ETSI INAP Information Model.

### 1.2.2 Tools

Signaling Manager is supposed to be used for module configuration. For more details, see Reference [1].

### 1.2.3 Conditions

Before starting this procedure, ensure that the following conditions are met:

- Configuration has been performed according to "Configuring SS7 TCAP", Reference [2].

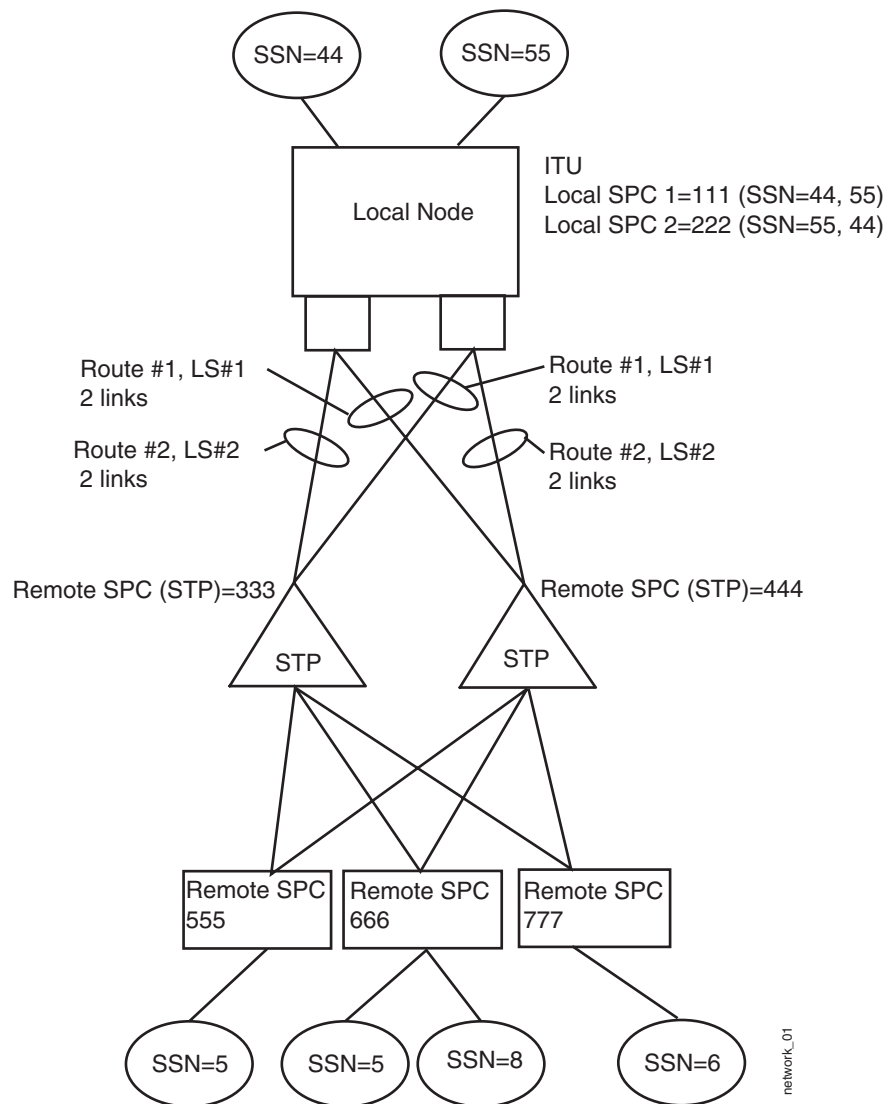


Figure 1 Example of a Network Configuration



## 2 Procedure

### 2.1 Configuring INAP

1. Add an element on **INAP**. An instance of an **INAP** is added.
2. Select the added **INAP** element to edit its properties.

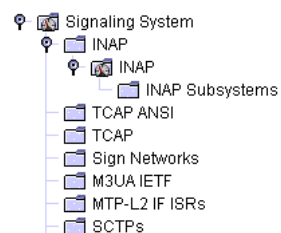


Figure 2 Added INAP element in Signaling Manager Navigation Pane

**Note:** You do not need to define an **INAP Subsystem** if you are not going to use orders on INAP Subsystems.

### 2.2 Configuring INAP Subsystem

1. Add an element on **INAP Subsystems**. An instance of an INAP Subsystem called **INAP Subsystem:[undef]** is added.

**Note:** As it is seen in the name of the added **INAP Subsystem:[undef]**, the **Tcap Subsystem** reference is not set by default.

2. Select the added **INAP Subsystem:[undef]**, and assign the **Tcap Subsystem** reference.

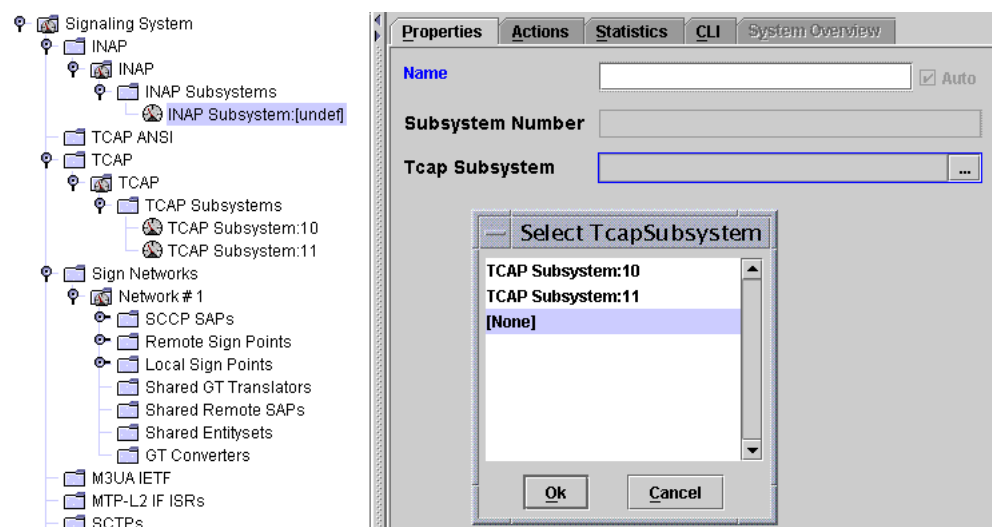


Figure 3 Select Tcap Subsystem Instances







## 3 Recommended SS7 Parameters

This section contains information about specific SS7 parameters or options. Most of these values will work for an SS7 stack in a running network and are not described specifically here. In some case though, parameters may need to be modified. These parameters or options are described in the table below.

### 3.1 INAP

The following properties can be found in **Signaling System/INAP/INAP**.

*Table 1 INAP Properties*

Property Name	Recommended Value	Comments
<b>Max Subsystems</b>	<b>2</b>	The maximum number of concurrent INAP subsystems
<b>Max Dialogues</b>	<b>5000</b>	The maximum number of dialogues available for the INAP module





# Glossary

**TCAP**

Transaction Capabilities Application Part





## Reference List

- [1] *Signaling Manager User Guide*, 1553-CNA 403 0874 Uen/1
- [2] *Configuring SS7 TCAP*, 4/1543-CNA 403 0874 Uen/1