

Configuring SS7, INAP

OPERATING INSTRUCTIONS

Copyright

© Ericsson AB 2011, 2017. All rights reserved. No part of this document may be reproduced in any form without the written permission of the copyright owner.

Disclaimer

The contents of this document are subject to revision without notice due to continued progress in methodology, design and manufacturing. Ericsson shall have no liability for any error or damage of any kind resulting from the use of this document.



Contents

1	Overview	1
1.1	Description	1
1.2	Prerequisites	1
2	Procedure	3
2.1	Configuring INAP	3
2.2	Configuring INAP Subsystem	3
	Glossary	5
	Reference List	7





1 Overview

1.1 Description

This operating instruction describes, using an example, how to configure Signaling System 7 defined by Intelligent Network Application Part (INAP) for the following standards:

- European Telecommunication Standard Institute (ETSI)

The procedure described in this example shows a complete configuration with usable values. For a specific customer configuration, other values may be relevant.

1.2 Prerequisites

1.2.1 Documents

For configuration parameter information, see "INAP ETSI Configuration File Description", Reference [3].

1.2.2 Tools

Signaling Manager is supposed to be used for module configuration. For more details, see Reference [1].

1.2.3 Conditions

Before starting this procedure, ensure that the following conditions are met:

- Configuration has been performed according to "Configuring SS7 TCAP", Reference [2].

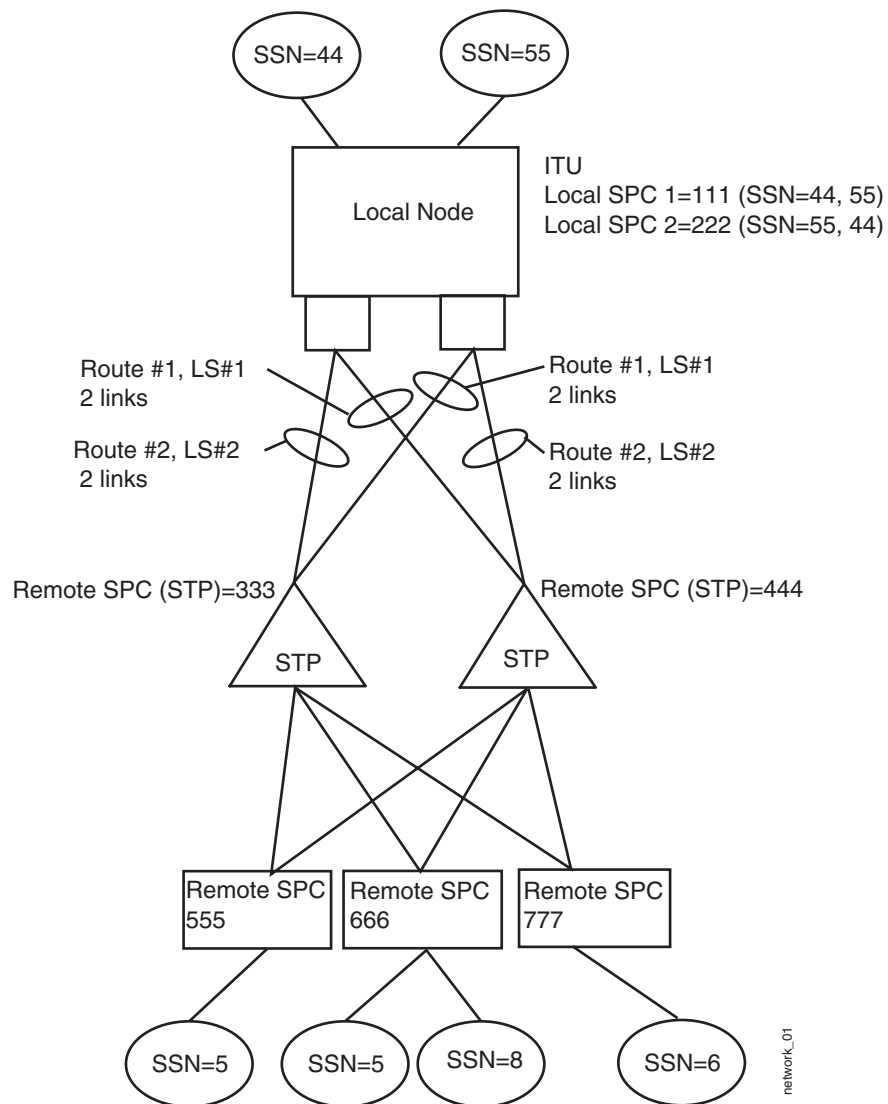


Figure 1 Example of a Network Configuration



2 Procedure

It is up to applications which values must be set in the configuration.

2.1 Configuring INAP

1. Add an element on **INAP**. An instance of an **INAP** is added.
2. Select the added **INAP** element to edit its properties.

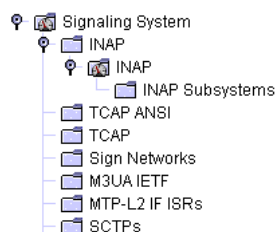


Figure 2 Added INAP element in Signaling Manager Navigation Pane

Note: You do not need to define an **INAP Subsystem** if you are not going to use orders on INAP Subsystems.

2.2 Configuring INAP Subsystem

1. Add an element on **INAP Subsystems**. An instance of an INAP Subsystem called **INAP Subsystem:[undef]** is added.

Note: As it is seen in the name of the added **INAP Subsystem:[undef]**, the **Tcap Subsystem** reference is not set by default.

2. Select the added **INAP Subsystem:[undef]**, and assign the **Tcap Subsystem** reference.

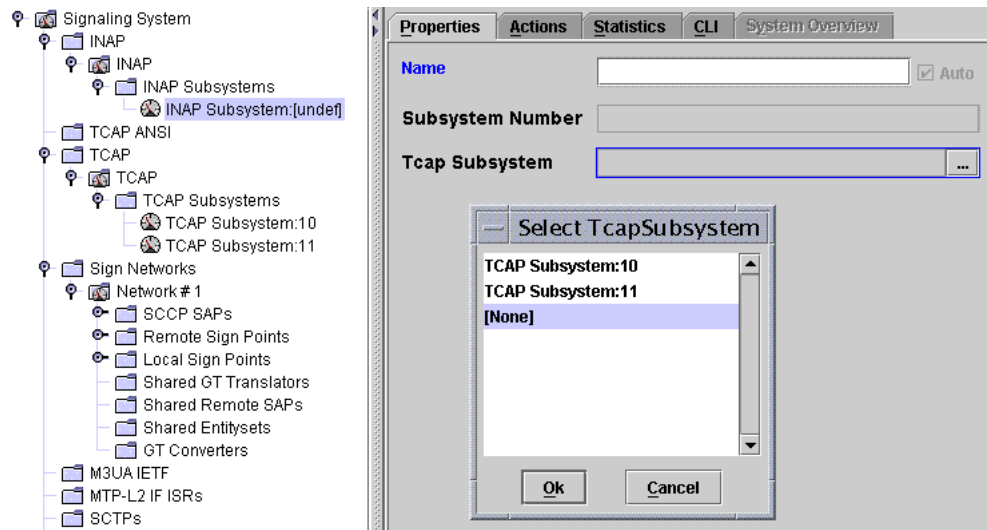


Figure 3 Select Tcap Subsystem Instances



Glossary

TCAP

Transaction Capabilities Application Part





Reference List

- [1] *Signaling Manager User Guide*, 1553-CNA 403 0874/3
- [2] *Configuring SS7 TCAP*, 4/1543-CNA 403 0874/3
- [3] *INAP ETSI Configuration File Description*, 3/19073-CAA 201 15/3