

# Configuring SS7, MAP

---

## OPERATING INSTRUCTIONS

**Copyright**

© Ericsson AB 2011, 2017. All rights reserved. No part of this document may be reproduced in any form without the written permission of the copyright owner.

**Disclaimer**

The contents of this document are subject to revision without notice due to continued progress in methodology, design and manufacturing. Ericsson shall have no liability for any error or damage of any kind resulting from the use of this document.



# Contents

<b>1</b>	<b>Overview</b>	<b>1</b>
1.1	Description	1
1.2	Prerequisites	1
<b>2</b>	<b>Procedure</b>	<b>3</b>
2.1	Configuring MAP	3
2.2	Configuring MAP Subsystem	3
	<b>Glossary</b>	<b>5</b>
	<b>Reference List</b>	<b>7</b>





# 1 Overview

## 1.1 Description

This operating instruction describes, using an example, how to configure Signaling System 7 defined by Mobile Application Part (MAP) for the following standards:

- European Telecommunication Standard Institute (ETSI)
- American National Standards Institute (ANSI)

The procedure described in this example shows a complete configuration with usable values. For a specific customer configuration, other values may be relevant.

**Note:** All examples in this document are using the ETSI MAP. However, the same procedures can be applied to ANSI-41 MAP.

## 1.2 Prerequisites

### 1.2.1 Documents

For configuration parameter information, see "MAP ETSI Configuration File Description", Reference [3] or "ANSI-41 MAP ANSI 12/97 Configuration File Description", Reference [4].

### 1.2.2 Tools

Signaling Manager is supposed to be used for module configuration. For more details, see Reference [1].

### 1.2.3 Conditions

Before starting this procedure, ensure that the following conditions are met:

- Configuration has been performed according to "Configuring SS7 TCAP", Reference [2].

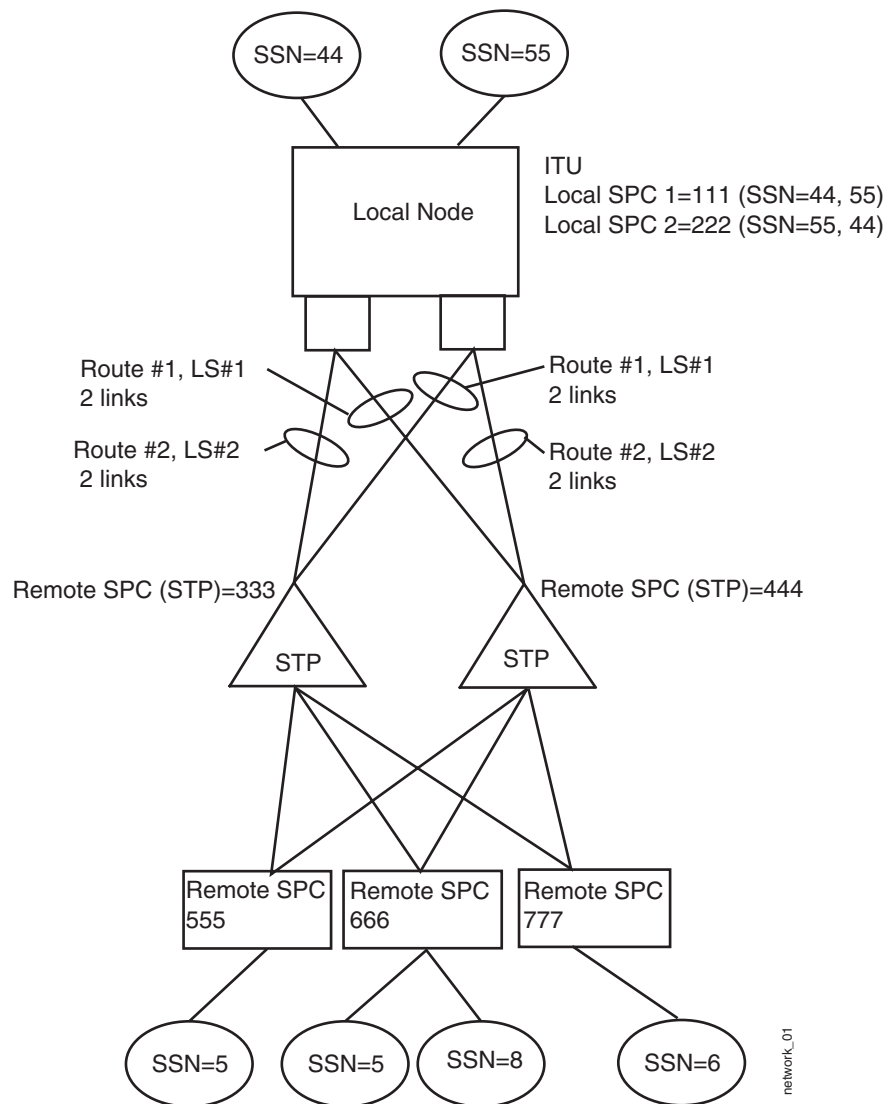


Figure 1 Example of a Network Configuration

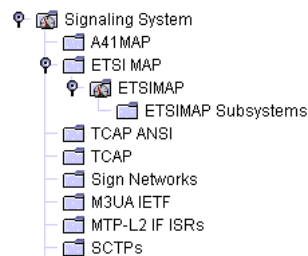


## 2 Procedure

It is up to applications which values must be set in the configuration.

### 2.1 Configuring MAP

1. Add an element on **ETSI MAP**. An instance of a **ETSIMAP** is added.
2. Select the added **ETSIMAP** element to edit its properties.



*Figure 2 Added ETSI MAP element in Signaling Manager Navigation Pane*

**Note:** You do not need to define a **ETSIMAP Subsystem** if you are not going to use orders on ETSI MAP Subsystems.

### 2.2 Configuring MAP Subsystem

1. Add an element on **ETSIMAP Subsystems**. An instance of an ETSI MAP Subsystem called **ETSIMAP Subsystem:[undef]** is added.

**Note:** As it is seen in the name of the added **ETSIMAP Subsystem:[undef]**, the **Tcap Subsystem** reference is not set by default.

2. Select the added **ETSIMAP Subsystem:[undef]**, and assign the **Tcap Subsystem** reference.

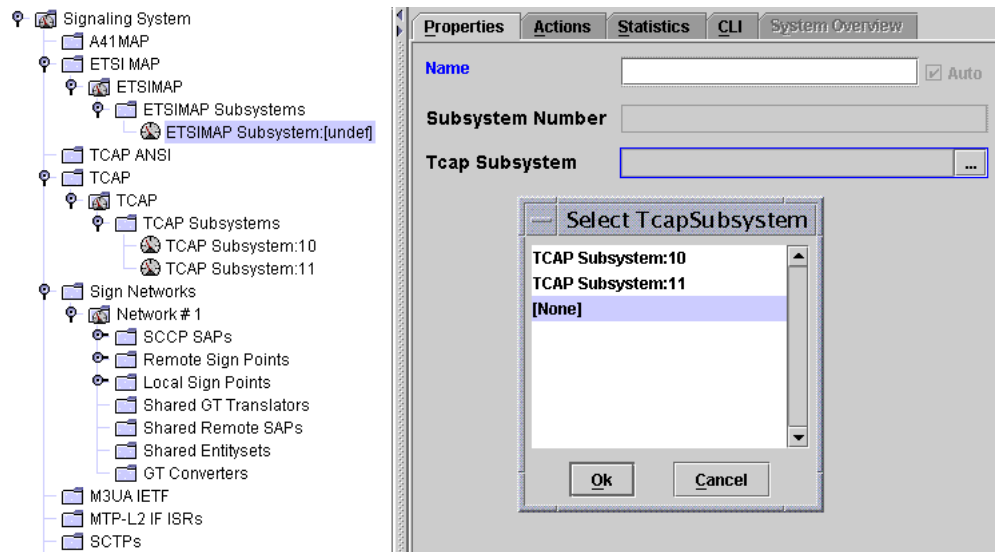


Figure 3 Select Tcap Subsystem Instances

**Note:** For ANSI-41 MAP Subsystem configuring **Tcap Ansi Subsystem** reference is assigned.





# Glossary

**TCAP**

Transaction Capabilities Application Part





## Reference List

- [1] *Signaling Manager User Guide*, 1553-CNA 403 0874/3
- [2] *Configuring SS7 TCAP*, 4/1543-CNA 403 0874/3
- [3] *MAP ETSI Configuration File Description*, 1/19073–CAA 201 45/3
- [4] *ANSI-41 MAP ANSI 12/97 Configuration File Description*, 3/190 73-CAA 201 16/3