

Renew Node Credential Online

OPERATING INSTRUCTIONS

Copyright

© Ericsson AB 2014, 2015, 2016. All rights reserved. No part of this document may be reproduced in any form without the written permission of the copyright owner.

Disclaimer

The contents of this document are subject to revision without notice due to continued progress in methodology, design and manufacturing. Ericsson shall have no liability for any error or damage of any kind resulting from the use of this document.

Trademark List

All trademarks mentioned herein are the property of their respective owners. These are shown in the document Trademark Information.



Contents

1	Introduction	1
1.1	Prerequisites	1
2	Procedure	3





1 Introduction

This document describes how to renew a node credential online.

An online renewal of a node credential can only be performed once the node credential has been installed online, refer to [Install Node Credential Online](#).

Only valid certificates can be renewed with online enrollment. An expired or revoked certificate requires a new installation, refer to [Install Node Credential Online](#).

As shown in Figure 1, renewal of a node credential with online enrollment consists of one main step:

1. The online enrollment starts with a Managed Object (MO) action from the Managed Element (ME). The ME communicates with the enrollment server at the Certification Authority (CA)/Registration Authority (RA), and renews the node credential.

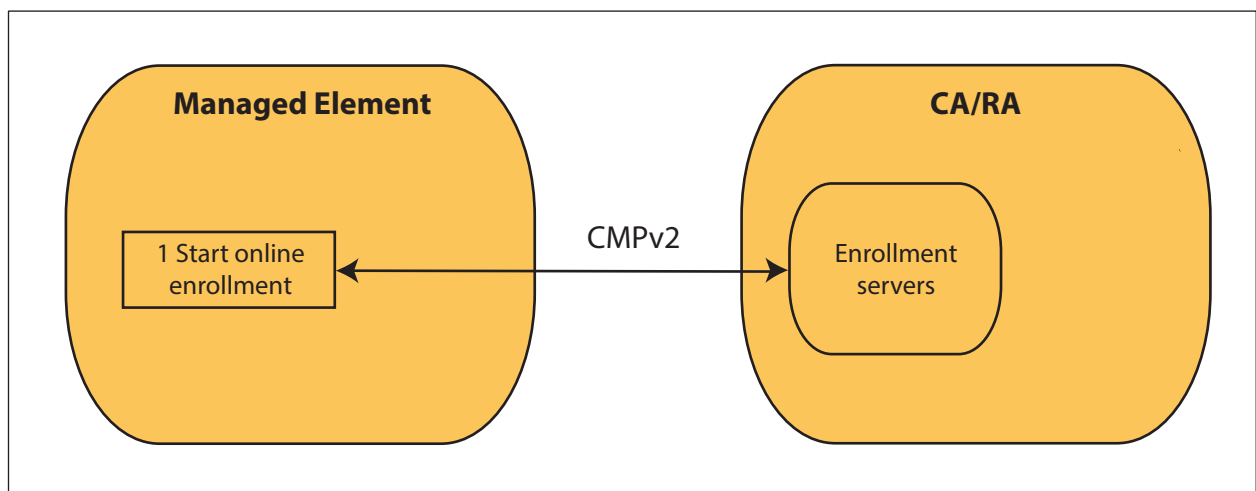


Figure 1 Renewal of a Node Credential Online

1.1 Prerequisites

This section describes the prerequisites, which must be fulfilled before using the procedure.

1.1.1 Conditions

The following conditions must apply:

- The user has the System Security Administrator role.



- The `NodeCredential` MO exists and its attributes `keyInfo`, `enrollmentServerGroup`, `enrollmentAuthority`, and `enrollmentTimer` have been checked.
- The certificate exists and is valid.
- An Ericsson Command-Line Interface (ECLI) session in Exec mode is in progress.



2 Procedure

To renew a node credential online:

1. Navigate to the `NodeCredential` MO that is to be renewed, for example:

```
>dn ManagedElement=NODE06ST,SystemFunctions=1,SecM=1,CertM=1  
,NodeCredential=1
```

2. Start the online enrollment:

```
(NodeCredential=1)>startOnlineEnrollment --challengePassword  
NULL
```

3. Check the result information of the `nodeCredentialId` enrollment:

```
(config-NodeCredential=1)>show enrollmentProgress
```

For a successful online start, the system returns the following:

```
result=SUCCESS  
resultInfo="installed from the online service"
```

If an error occurs during the execution of the action, attribute `enrollmentProgress` shows `result=FAILURE` and `resultInfo` shows the cause of the failure. Repair the failure and restart the enrollment if needed.