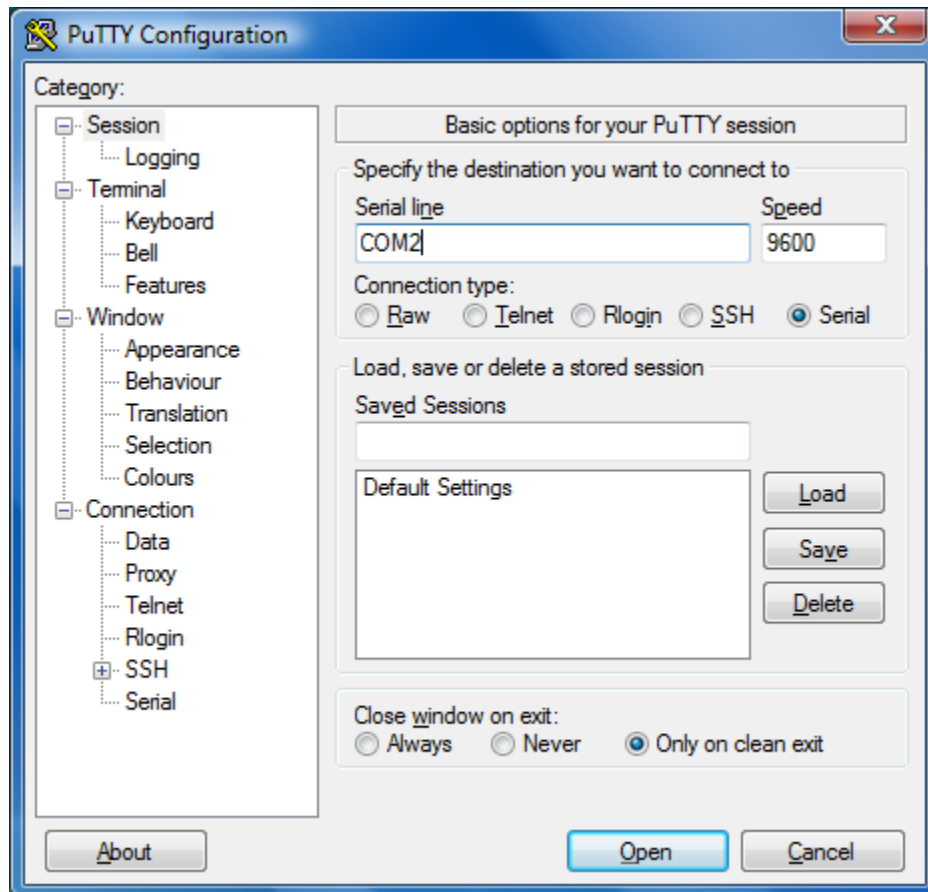


## **Connection TO EnodeB**

**LMTA**  $\equiv$  serial cable (one end is serial and other is Ethernet)

**LMTB**  $\equiv$  Ethernet cable

**Launch putty and make sure which serial port you are connecting and enter the comport name and speed press connect.**

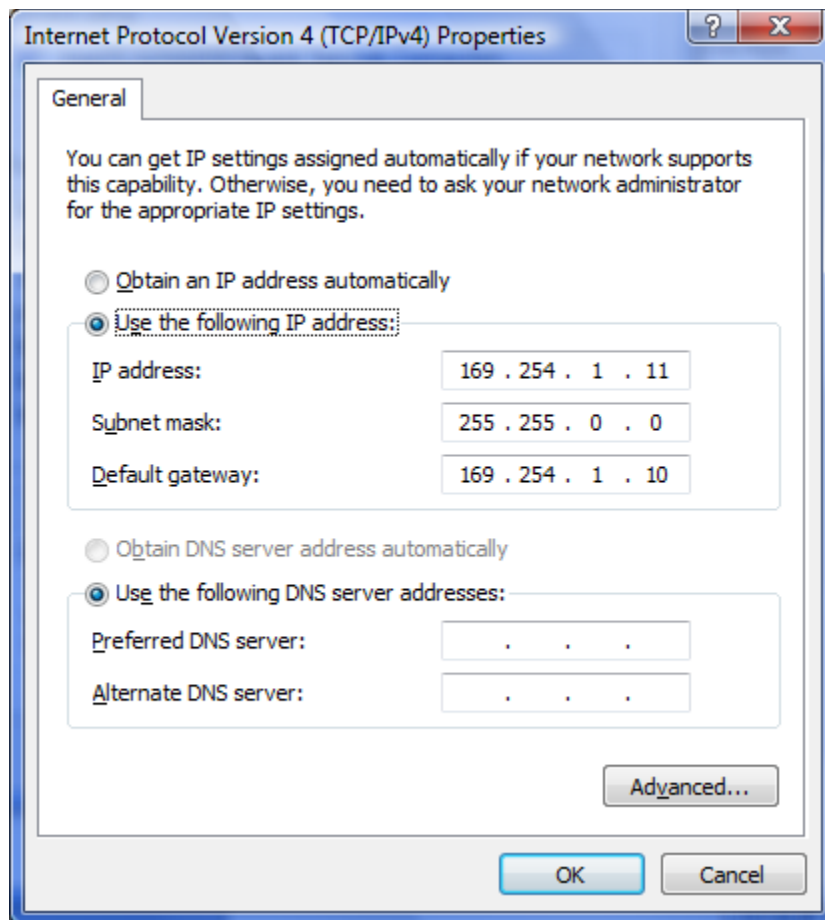


## **2. Now set the laptop IP address as below**

RBS Ethernet IP Address = 169.254.1.10

Laptop (Thin Client) IP Address = 169.254.1.11

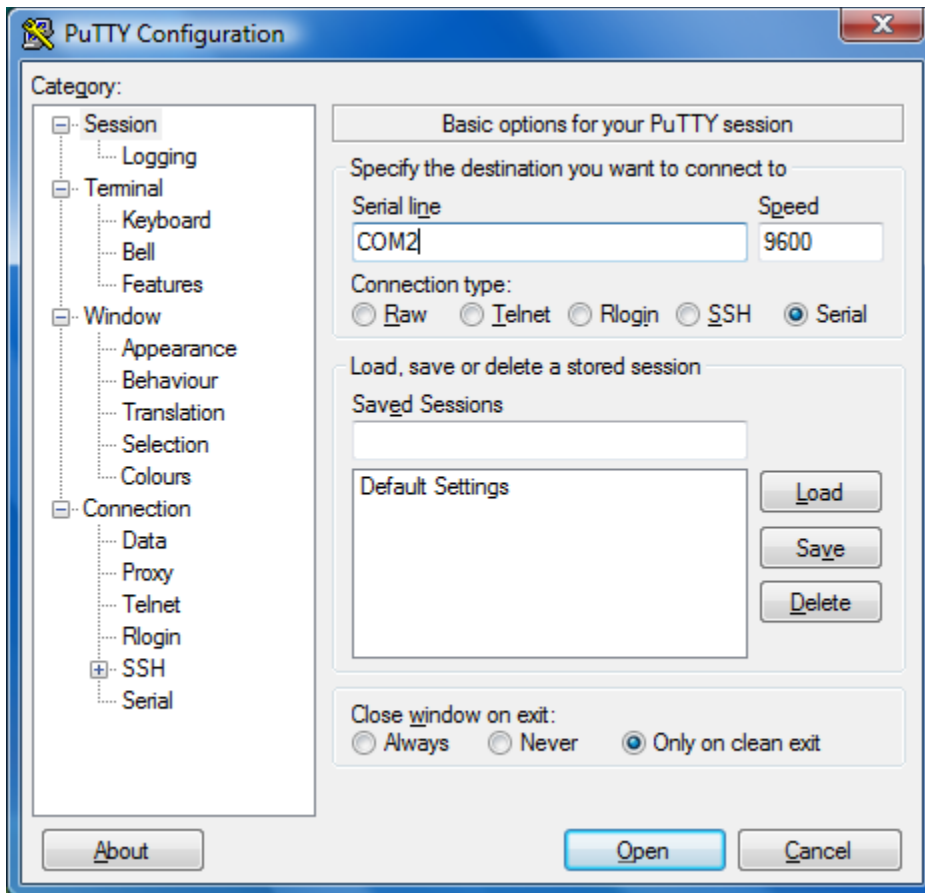
**As the laptop terminal is connected to rbs that's why its gateway is rbs ip.**



**Now laptop is configured to use with EMAS.**

### **Preparing The DUL for initial configuration**

1. Connect the DUL/DUW to laptop via serial cable



**Step 2** = restart the RBS in backup mode

Reload -

**Step 3** = check if C2 drive is mounted to the disk or not

Vols

If not mounted go to step 4

**Step 4** = mount\_c2

**Step 5** = format partitions

formathd /d

formathd /C2

Restart the rbs in backup mode

Reload -

Set the ip configuration using ifconfig

Ifconfig le0 169.254.1.10 255.255.0.0

### **LOAD The BASIC PACKAGE**

- 1.** Launch WS\_FTP pro software
- 2.** Use the binary transfer mode in ftp client for all the transfers
- 3.** Connect to the RBS using ip address 169.254.1.10
- 4.** Enter username rbs and password rbs
- 5.** copy the c2 and d directory from the client to root directory of Enodeb
6. close the ftp client
7. reload -

### **DOWNLOAD AND INSTALL EMAS**

<http://169.254.1.10/em/index.html>

**169.254.1.10** is the ip address of Enodeb

### **Connect to the node through EMAS**

In the address field type the ip address of Enodeb and in the name field type the name of Enodeb (give a unique name)

Click add button then you will see a new nodeb name appear in the window click on the name and click connect

**Connect to Network Element**

Connect to Network Element:  
Select an address from the list or type it in the text field below.

All Nodes | Favorites

Address *	Name	Comment
169.254.1.1	RBS_default	
169.254.1.10	LTE eNB default	

Remove

Address *	Name	Comment
169.254.1.1	RBS_default	

Add

Connect Cancel

ERICSSON

The software in the enodeb may need to be updated

Before updating software u first change the security mode to unsecure  
use serial connection putty any type

- ***secmode -f u***

now open the EMAS and click on the software on the drop down menu and select up tab

169.254.1.10 - RBS Element Manager

FileViewMOAlarmToolsHelp

←→

Software

View Descriptions

MO Tree

ManagedElement=1

- ⊞ RPU List Per Slot
- ⊞ RPU List Alphabetical

Refresh Tree

Stop

TableMO PropertiesDescriptionViewsUPCV

upgradePackageId	state	Active	productNumber	productRevision	userLabel
InitialUP	ONLY_DELETEABLE		0	0	userLabel
R19AK	UPGRADE_COMPLETED	yes	CXP102051/12	R19AK	

Create UP...

UP Properties

Refresh

Node UTC time: 2013-06-12 12:38 ZERICSSON

Click on create UP

Now you will see

169.254.1.10 - RBS Element Manager - Upgrade Package - Create

userLabel: CXP102051%18\_R21BN

FTP server and Upgrade Package data

ftpServerIpAddress: \* 169.254.1.11

user: anonymous

password: .....

upFilePathOnFtpServer: \*

/01LTE\_CXP102051%18\_R21BN/CXP102051%18\_R21BN.xml

state: Active:

confirmationDeadline: upCompatibilityIndex:

administrativeData

productNumber: cppUpVersion

productRevision: productNumber:

productName: productRevision:

productionDate: productName:

productInfo: productionDate:

productInfo:

actionResult loadModuleList basedOnUpgradePackages

Create Package

Install Package

Install PiuType

Cancel Installation

Delete Package

Verify Package

Upgrade Node

Cancel Upgrade

Confirm Upgrade

Update Node

Close Refresh Help MO Help

Here you need to fill in the following information :

**userLabel** : CXP102051%18\_R21DH (Unique name of the upgrade package)

**ftpserverIpAddress** : 169.254.11 (The IP address of your laptop)

**user** : anonymous (User name)

**password** : anonymous (Password)

**upFilePathOnFtpServer** : (Location of the .xml file on your laptop)

now click on create package, after the package has been created click on install package

Then click on hard upgrade, then eNodeb will be upgraded. It will take 30 minutes for software loading.



Once the software is loaded it will ask for confirmation

Before confirming change the security mode setting to secure mode else auto integration will not be possible.

Go to putty type

**Secmode -f s**

Then confirm the upgrade by clicking on confirm upgrade.

## AUTO INTEGERATION

169.254.1.10 - RBS Element Manager - Upgrade Package - Confirm

LDN: ManagedElement=1,SwManagement=1,UpgradePackage=CXP102051%18\_R21BN

userLabel: 01LTE\_CXP102051%18\_R21BN

FTP server and Upgrade Package data

ftpServerIpAddress: \* 169.254.1.11

user: anonymous

password: •

upFilePathOnFtpServer: \*  
/01LTE\_CXP102051%18\_R21BN/CXP102051%18\_R21BN.xml

Progress

Waiting for upgrade confirmation

state:	Awaiting confirmation	Active:	Yes
confirmationDeadline:	2013-06-12 16:28:52+01:00	upCompatibilityIndex:	L13A_CPP9

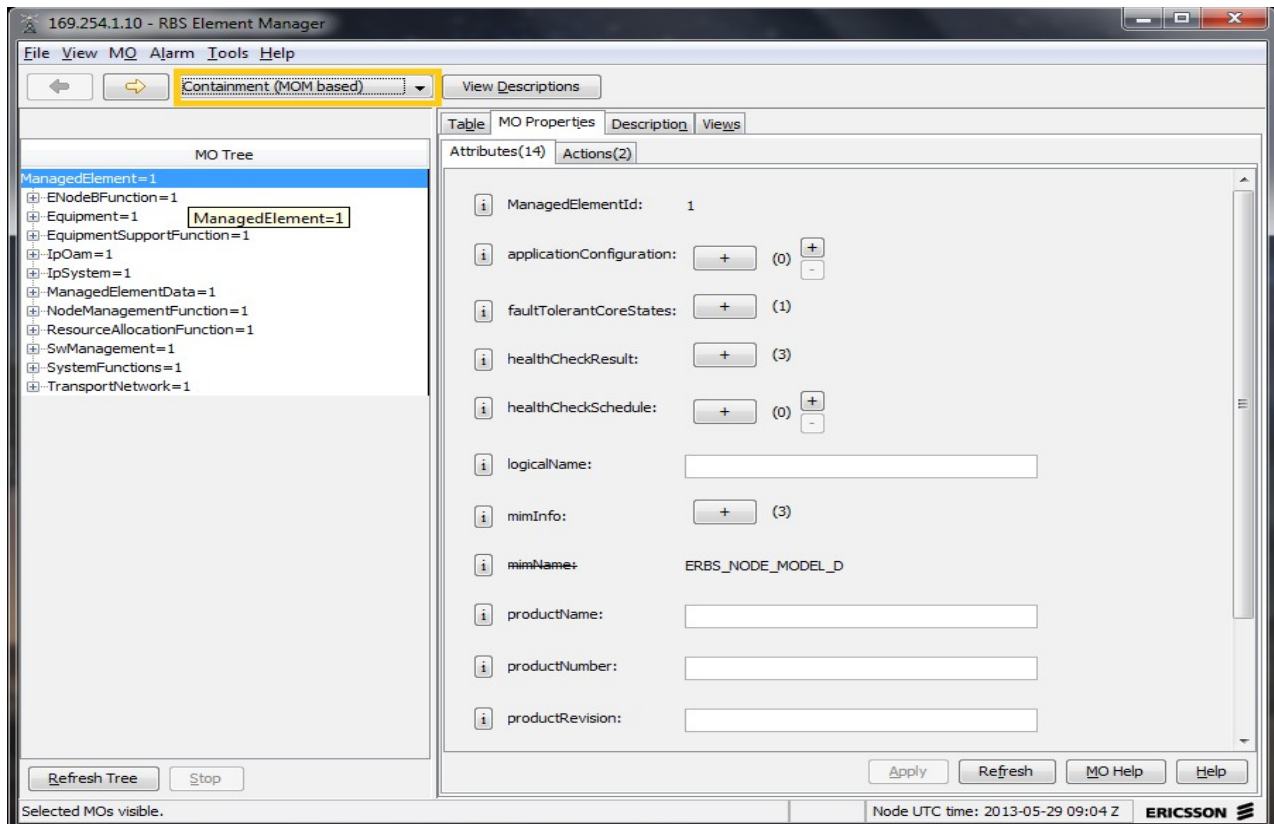
administrativeData	cppUpVersion
productNumber: CXP102051/18	productNumber: C13.0-EP4-4
productRevision: R21BN	productRevision: R1A
productName: UTRAN ENodeB	productName: CPP
productionDate: 2013-02-01	productionDate: 2013-02-01
productInfo: Upgrade package for CXP102051/18 R21BN	productInfo:

Apply Close Refresh Help MO Help

Create Package  
Install Package  
Install PiuType  
Cancel Installation  
Delete Package  
Verify Package  
Upgrade Node  
Cancel Upgrade  
Confirm Upgrade  
Update Node

Now after software loading its time for auto integration

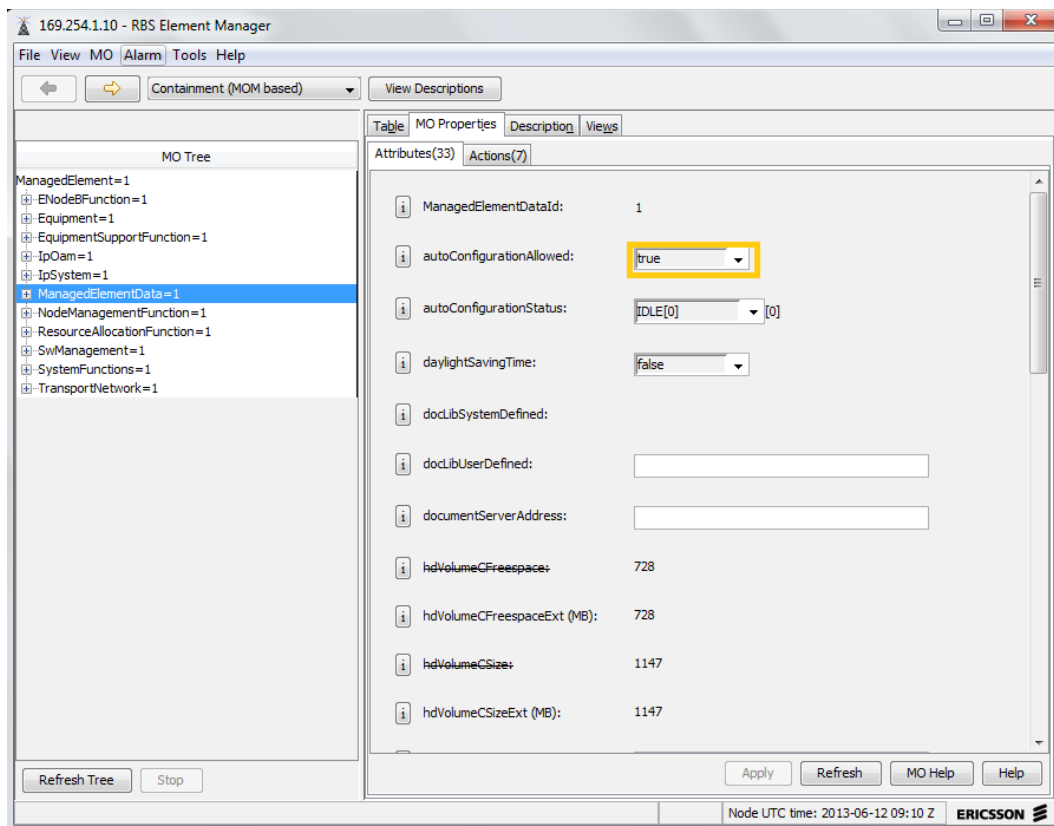
Log in to the emas using Enodeb ip 169.254.1.10 now select  
**Containment (mom based)**



IN the MO tree select “**Managed equipment data**”

Set “**Autoconfiguration allowed**” to yes and the apply

Click refresh until Autoconfiguration status become idle



Now you have to launch “**Integrate RBS wizard**”

## **Tools<sup>▢</sup> integrate RBS**

In the File path field, browse to the location of the Site Install file and click on Open.

The SiteInstall file for DU1 will be named  
<SiteID>\_DUL1\_SiteInstall.xml

The SiteInstall file for DU2 will be named  
<SiteID>\_DUL2\_SiteInstall.xml

Username and password will be supplied to you.

Integrate RBS - Connected to RBS: 169.254.1.10

File View Trace & Error Help

**Integrate RBS**

Contents

- Main Data
- Network configuration data
- Configuration files data
- Cabinet Data

Main Data

For information about input parameters click the question mark symbol, or press F1

File path:  Browse...

User name:  Password:

RBS logical name:

VLAN id:

☐ Do not use Security Activation

☐ Do not use IP Security Activation

RBS integration code:

Basic

Previous Next Start integration... Cancel integration...

ERICSSON Connected to RBS: 169.254.1.10

Click **Next** to go to the **Network configuration data** page.

Don't change any details on this page.

Click **Next** to go to the **Configuration files data** page.

Make sure all the file path are empty here and there should not be any data.

Integrate RBS - Connected to RBS: 169.254.1.10

File View Trace & Error Help

**Integrate RBS**

Contents

- Main Data
- Network configuration data
- Configuration files data
- Cabinet Data

Configuration files data

For information about input parameters click the question mark symbol, or press F1

Site basic configuration

File path:  Browse...

Site equipment configuration

File path:  Browse...

License key

☐ Do not use license key file, even if present in summary file

File path:  Browse...

Upgrade package

☐ Do not use upgrade package, even if present in summary file

File path:  Browse...

Basic

Previous Next Start integration... Cancel integration...

ERICSSON Connected to RBS: 169.254.1.10

Click next to go on cabinet data here you will fill cabinet related data like product name , number,serial number and revision number etc

The screenshot shows the 'Integrate RBS' application window, which is connected to an RBS at IP 169.254.1.10. The window has a menu bar with 'File', 'View', 'Trace & Error', and 'Help'. On the left is a 'Contents' sidebar with four items: 'Main Data', 'Network configuration data', 'Configuration files data', and 'Cabinet Data' (which is selected and highlighted). Below the sidebar is a 'Basic' button. The main area is titled 'Cabinet Data' and contains a help message: 'For information about input parameters click the question mark symbol, or press F1'. Below this are five text input fields: 'Production date' (20130201), 'Product name' (DUL 20 01), 'Product number' (KDU137533/4), 'Product revision' (R2A), and 'Serial number' (TU8XA53205). At the bottom of the main area are four buttons: 'Previous', 'Next', 'Start integration...', and 'Cancel integration...'. The status bar at the very bottom shows the 'ERICSSON' logo and the text 'Connected to RBS: 169.254.1.10'.

Integrate RBS - Connected to RBS: 169.254.1.10

File View Trace & Error Help

**Integrate RBS**

Contents

- Main Data
- Network configuration data
- Configuration files data
- **Cabinet Data**

Basic

Cabinet Data

For information about input parameters click the question mark symbol, or press F1

Production date: 20130201

Product name: DUL 20 01

Product number: KDU137533/4

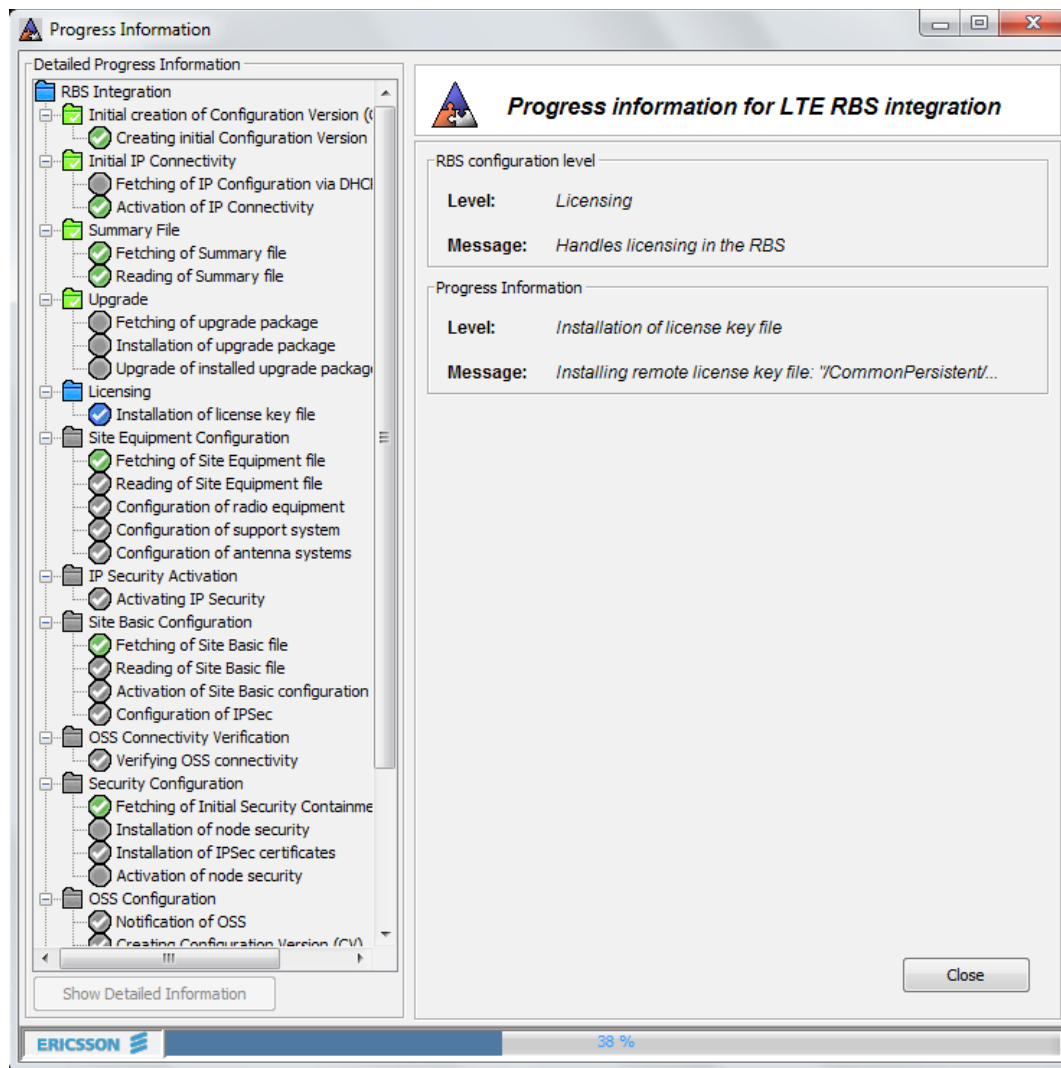
Product revision: R2A

Serial number: TU8XA53205

Previous Next Start integration... Cancel integration...

ERICSSON Connected to RBS: 169.254.1.10

After that click on Start integration



When the process reached 82 or 94 percent OSS engineer will do some configuration and then you will receive message Site integration complete.