

# Ericsson Library Explorer

## DESCRIPTION





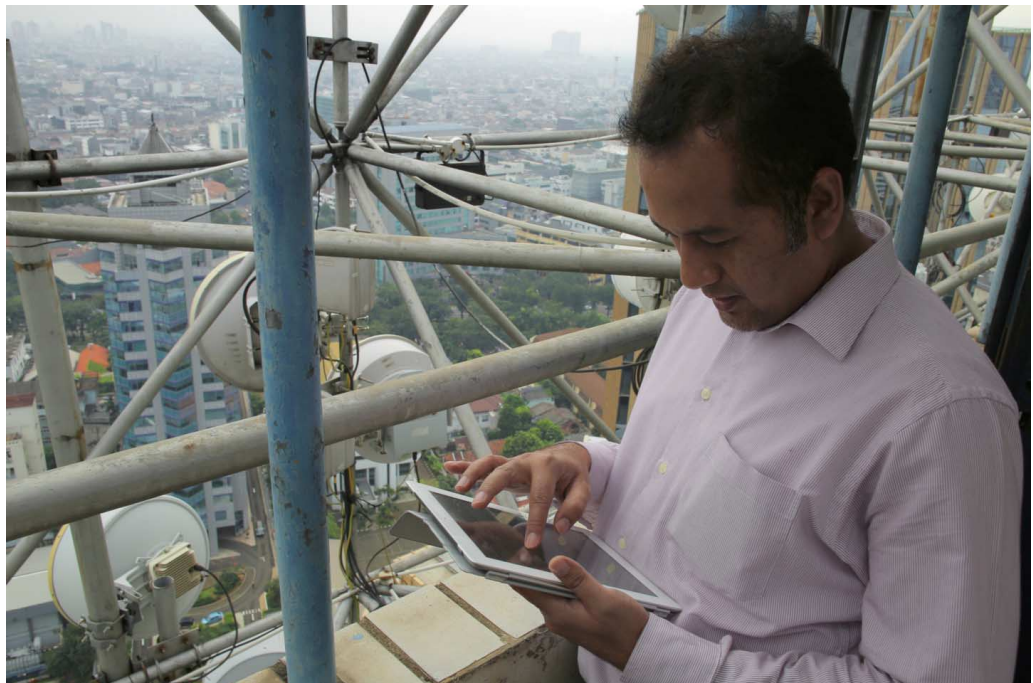
## Introduction

This document introduces ELEX, the Ericsson Library Explorer.

ELEX is a modern application, the next generation of ALEX, used to browse CPI, the technical documentation available to handle Ericsson products throughout the life cycle. The document presents the key features, enhancements, and the technical architecture of the tool.



ELEX is designed to handle all types of Ericsson product information. The same CPI library can be used both on web servers, on local file servers, on portable PCs with no network connection, and on tablets and smartphones.



Ericsson Library Explorer is based on Active Library Explorer (ALEX), but is fully redesigned with a new and modern user interface, focusing on optimal performance and usability.

### Why are we changing to ELEX?

- To modernize the user interface and for a consistent look and feel
- To provide new dynamic features and improved support for mobile devices
- To enable seamless integration with other web applications

The design of ELEX is based on responsive web design (HTML5, JavaScript, CSS3) and is optimized for use in modern browsers and on mobile devices with different screen resolutions. ELEX provides also many new and enhanced features.

### Key Features

- A modern user interface with great performance and usability
- Optimized support for mobile devices based on responsive web design
- Lightning fast search, filter, and sort functions, intuitive and easy to use
- Dynamic features to optimize readability and content details shown
- Complies with Ericsson branding rules and styles for web applications
- Smooth integration with the Ericsson Network Manager and other applications
- Glossary search to find acronym or term definitions instantaneously
- New MyDocs feature to create own documents from new and copied topics
- Advanced library collections support for predefined groups of libraries
- Faceted filters to scope and find relevant information quick and easy
- Instant search results for all titles, keywords, and full text hits in libraries
- Search suggestions based on actual library contents
- Extensive cross-references supported with tooltips and hyperlinks
- Notes and content rating functions for end user feedback
- Compare libraries to get a list of all new/changed/removed documents
- Both HTML and high-quality PDF (for printing) formats provided

For a description of all Ericsson Library Explorer features and how to use them, see introduction videos and the online help information included in the application.



## Quick and Easy Access to All Information

All documents belonging to a specific product version are contained and delivered in the form of a CPI library, in a single compressed file. This greatly simplifies the handling, making the library easy to identify, distribute, and to install anywhere on a file system.

All CPI libraries available on a service can be browsed with a standard web browser. By using filters and the search feature, an immediate result is provided with the library of a product with the wanted content.

The various dynamic features supported on document and topic level provide an entirely new user experience with optimized performance and functionality compared to ALEX.

The dynamic features can be used to optimize readability and content details shown. This includes among others user options for hiding and showing panels, library and document metadata details, and topic numbering.

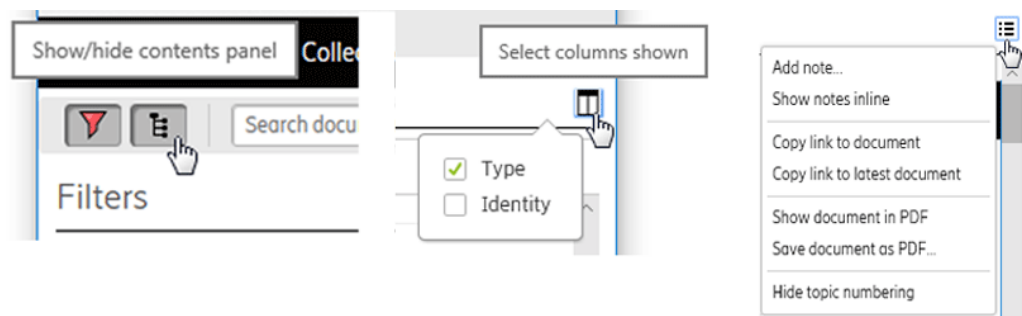


Figure 1 Dynamic View Options

## Library View Features

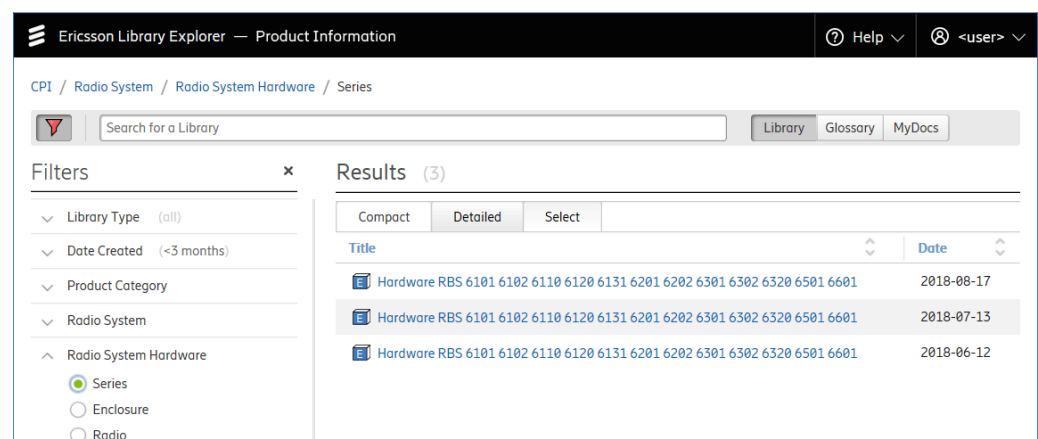


Figure 2 Ericsson Library Explorer - Library View User Interface

Any library available on the service used is easy and fast to find using ELEX.





Libraries are instantly searched for as you type and the matching results shown can easily be sorted, as needed. The number of hits shown is dynamically adjusted based on the space available.

Filters are provided to limit the search scope efficiently so that only relevant hits are shown in the search results. Filter groups are provided for **Library Type**, for **Date Created**, and for **Product Category** or **Product Folder** based filtering.

## Content View Features

When a selected library is opened for view, another browser tab or window is opened providing specialized **Content** view functions.

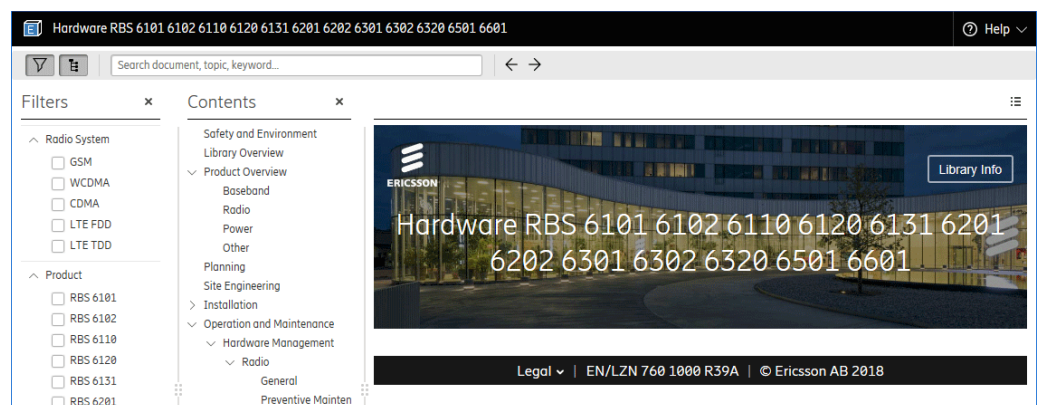


Figure 3 Ericsson Library Explorer - Contents View User Interface

ELEX provides enhanced support for library collections. A library collection is a predefined group of libraries that together represent, for example, a business solution or a subnetwork. It consists of a top-level library as the entry point, and sublibraries referenced from the top-level library.

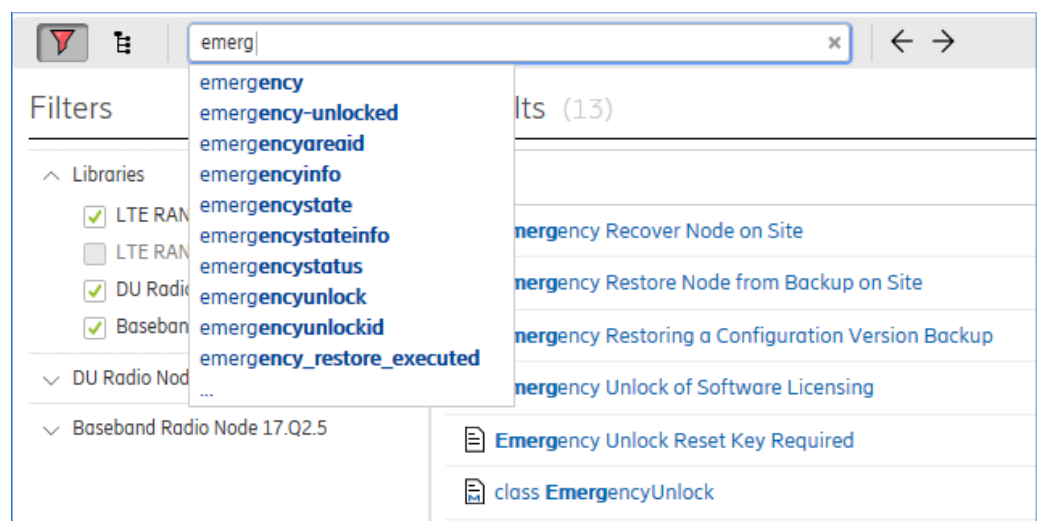


Figure 4 Searching with Suggestions and Instant Results



Ericsson Library Explorer supports HTML, PDF, and Excel document formats.

Toggle buttons are provided to show or hide the **Filters** and **Contents** panels as needed, to preserve more space for the content viewed.

The **Filters** panel contains the filter groups with all filter options defined for the library. Using filters, the scope is immediately limited so that only relevant hits are shown in the search results and in the content shown.

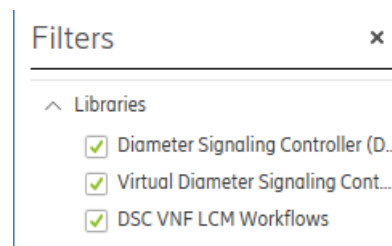


Figure 5 Filters Panel

All filter and user options selected are stored so that when entering ELEX again all filters and options are set accordingly.

The **Contents** panel dynamically shows the library and document level Table of Contents (TOC), with the current document TOC shown inline.

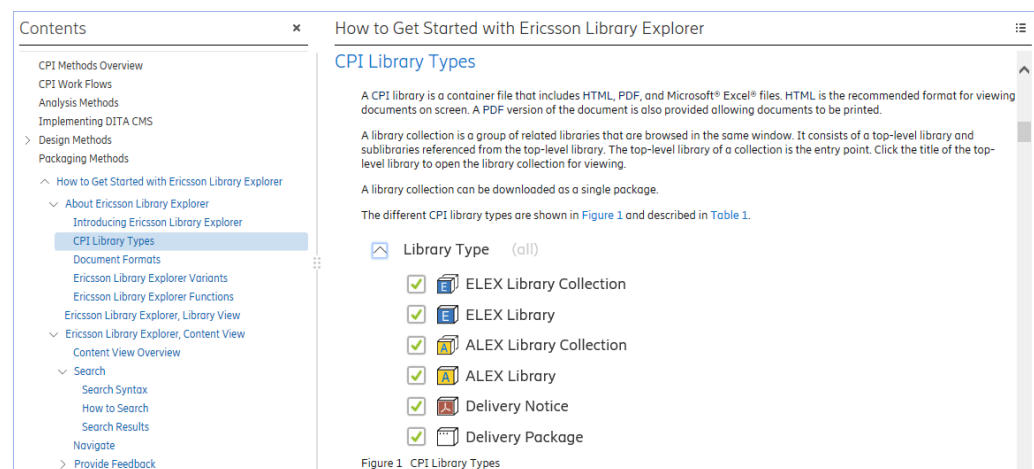


Figure 6 Document Opened for View

The **Data** panel shows alternatively the content of documents or topics included in the library, the search results, or a quick help page.



## Other Features

**Glossary Search** is a feature where the definition of an acronym or a term can be found in a fraction of a second, with instantly search results shown as you type.

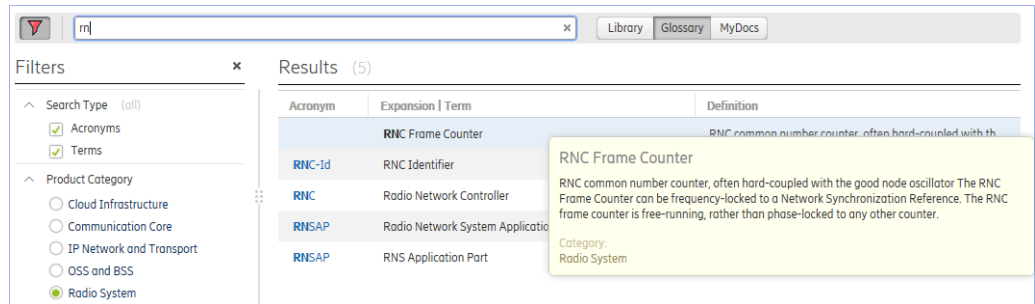


Figure 7 Glossary Search for Acronyms and Terms

This entirely new search type helps to find definitions of an acronym or a term used in the documentation for all products that are part of a selected Product Category.

ELEX also provides a new **MyDocs** feature.

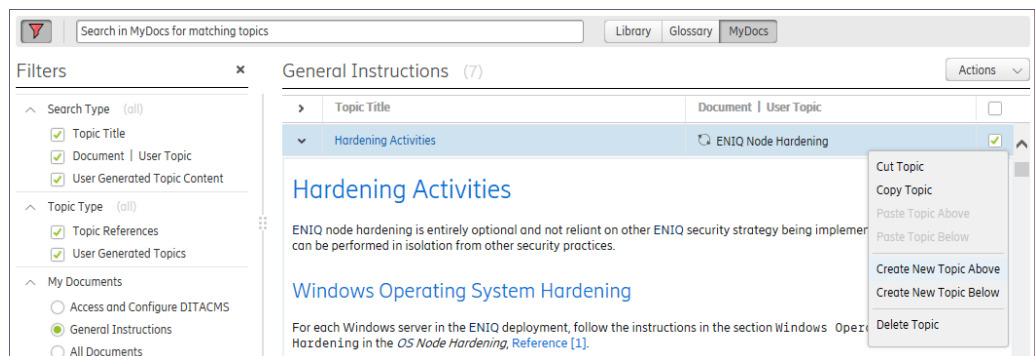


Figure 8 Create Own Documents Using MyDocs

MyDocs enables users to create own documents with the gathering of any number of different topics of own choice. These topics can be referenced from any document in any library, and can be mixed with own created topics, called User Generated Topics (UGT). Topics can be individually, or for all topics part of a document, expanded and collapsed dynamically.

User can select to include a reference to topics in the current document and library version shown, or to the latest version of a library available. By selecting the latest option, the reference dynamically shows the updated topic when documents and libraries are frequently revised and the content is changed.

All own documents are available from the MyDocs tab and can easily be shared with other users of the same service.

## Technical Architecture

The technical architecture for **Ericsson Library Explorer** on the CPI Extranet service consists of the following main components:

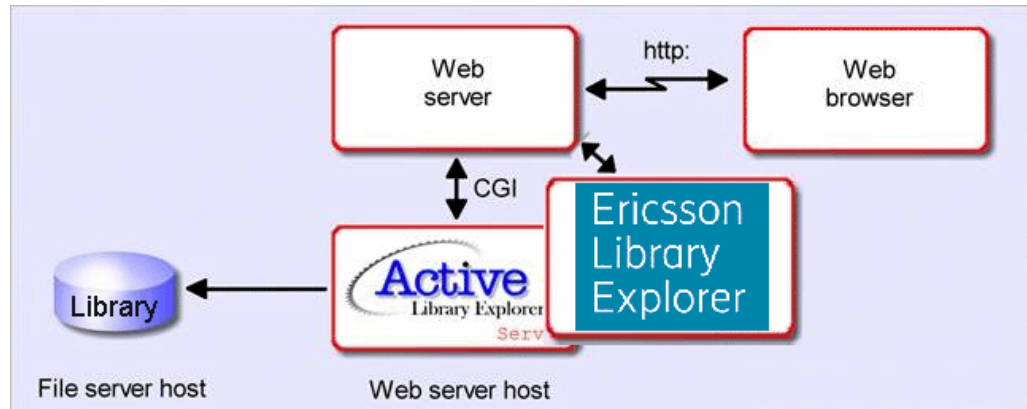


Figure 9 Ericsson Library Explorer on CPI Extranet

- A library in ELEX, ALEX, or other supported library format. This is a library containing the CPI documents for a product built by Ericsson with all necessary information for managing a product or a service.
- A standard web server that supports Common Gateway Interface (CGI) programs, in CPI Extranet this is an Apache web server.
- Ericsson Library Explorer Server. This includes a set of CGI-programs that runs on the web server. The programs receive requests from the web browser, retrieve the desired information from libraries, and send it back to the browser.
- Active Library Explorer Server. This CGI-program is included for backward compatibility to support old library types not supported by ELEX. Old libraries are automatically opened in ALEX.





## Technical Data

**Ericsson Library Explorer**, version 3.3

LXA 119 1929 R3D

Supported CPI  
Services

CPI Extranet at: <https://cpi.ericsson.net/elex>

Supported Client  
Browsers

Latest version of Chrome®, Firefox® or Microsoft Edge®.  
Other modern browsers probably work as well.

Microsoft® Internet Explorer® 11 also works, but is not  
recommended because of performance and security  
reasons.



# Ericsson Library Explorer

Version 3.3 | 2019-04-12 | CNL 121 700/1 R3D  
© Ericsson AB 2018-2019. All rights reserved.





## Trademark List

**Chrome** is a registered trademark of Google Inc.

**Firefox** is a registered trademark of the Mozilla Foundation.

**Microsoft, Microsoft Edge, Internet Explorer** are registered trademarks of Microsoft Corporation in the United States and/or other countries.