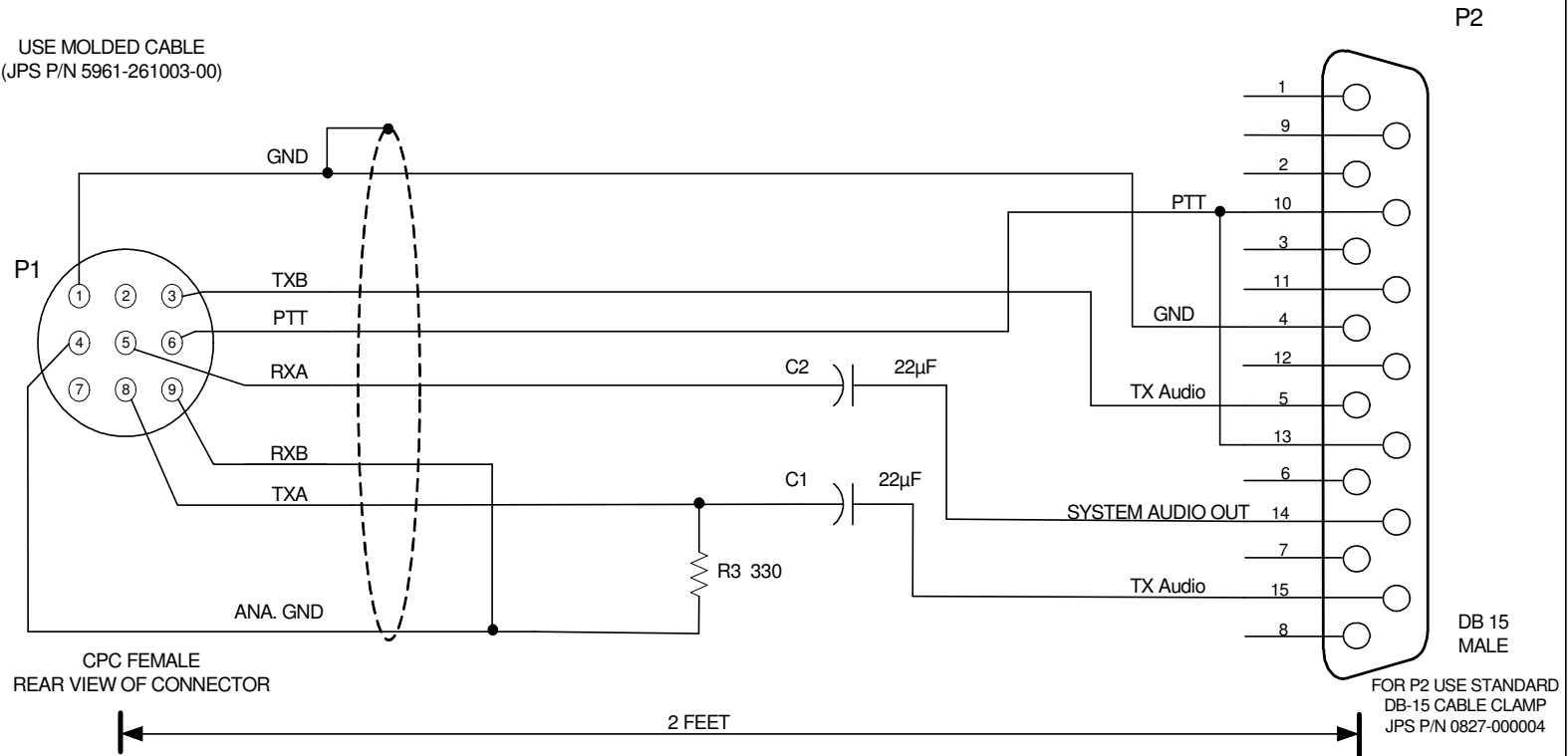


PURCHASED PART

Rev	ECO	Date
A		9-14-05

USE MOLDED CABLE
(JPS P/N 5961-261003-00)



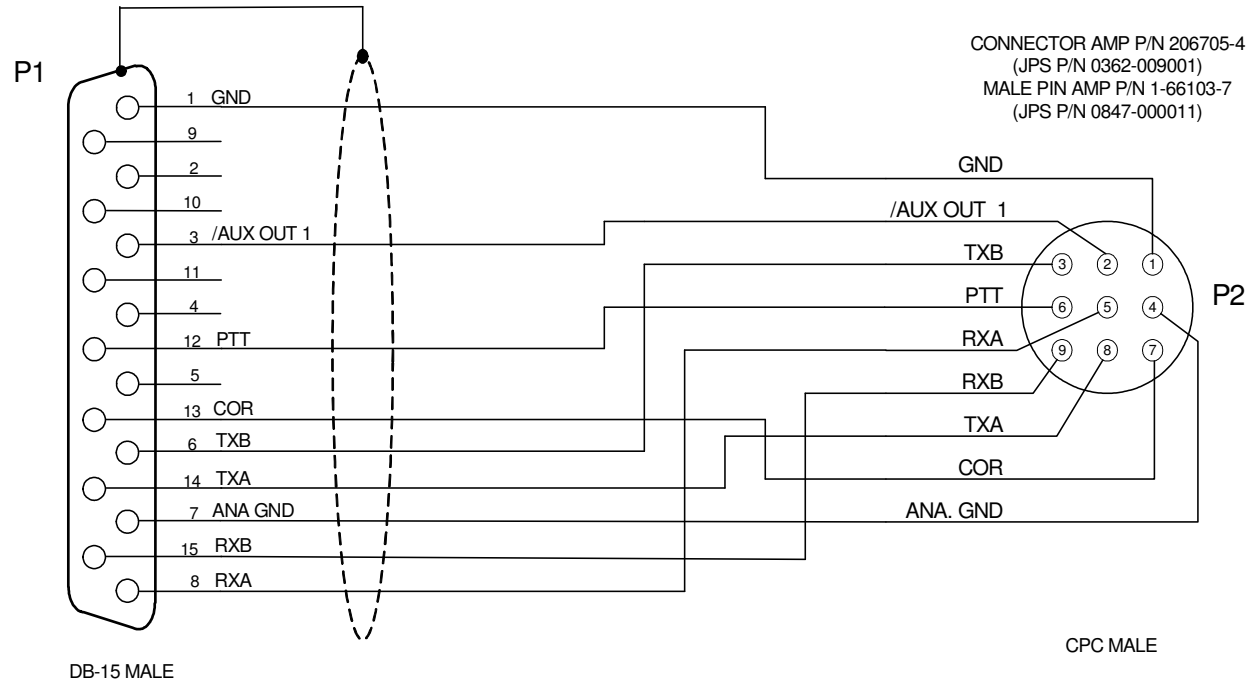
COMPONENT PCB (JPS P/N 5961-271000)	
C1	JPS P/N 0321-220250
C2	JPS P/N 0321-220250
R3	JPS P/N 1820-331000
JU2	
JU6	

USED WITH:
CODAN NGT MOBILE

Designed By:	KJB	Raytheon JPS Communications Raleigh, NC USA		
Drawn By:	KJB	Title CABLE, CPC TO CODAN NGT MOBILE		
Checked By:	CTS	Size A	Document Number 5961-271304	Rev A
		Issued Date SEPTEMBER 14, 2005	Sheet 1 of 1	

PURCHASED PART

Rev	ECO	Date
A		



- NOTES: 1) USE BELDEN 9934 SHIELDED CABLE.
2) CONNECT SHIELD DRAIN TO SHELL OF P1 ONLY.
3) CONNECTORS P1 AND P2 MUST BE MOLDED TO THE CABLE.
4) CABLE MUST BE LABELED WITH THE RAYTHEON/JPS P/N AND REV, VENDOR CODE AND DATE (MM/YY).

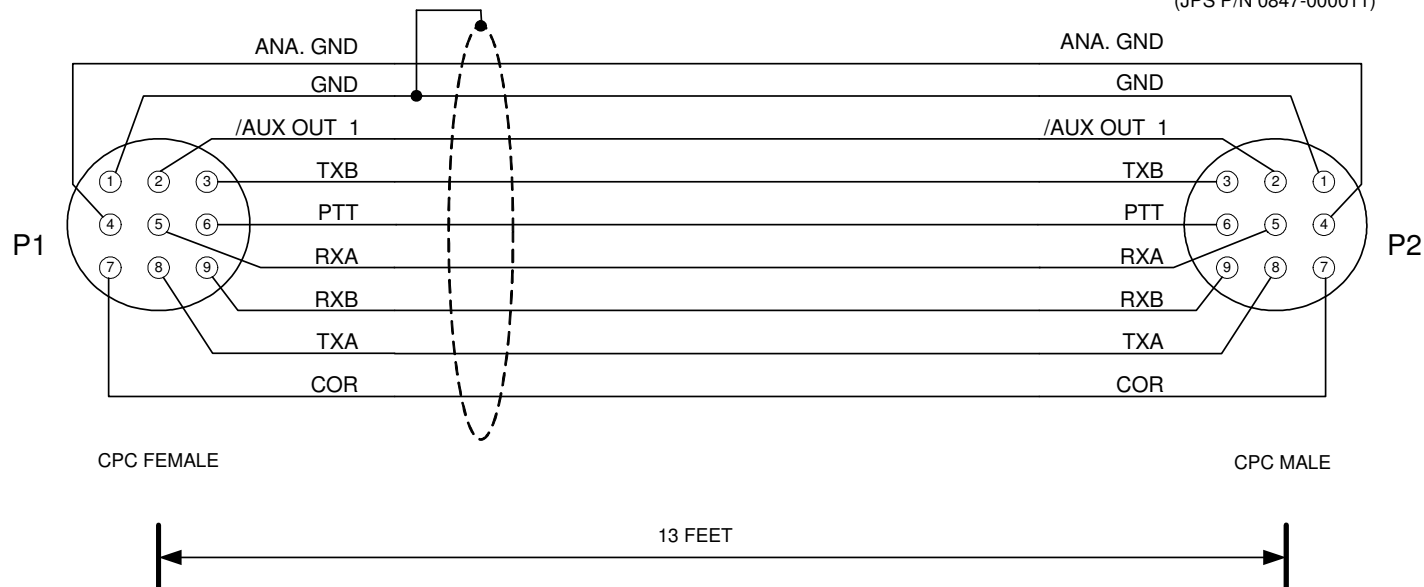
Designed By: JAC	Raytheon JPS Communications		
Drawn By: JAC	Title CABLE, ACU-1000 RADIO EXTENSION - 13 FT		
Checked By: RBP	Size A	Document Number 5961-261002-00	Rev A
Issued Date JANUARY 5, 2004		Sheet <u>1</u> of <u>1</u>	

Rev	ECO	Date
A		

PURCHASED PART

CONNECTOR AMP P/N 206708-1
(JPS P/N 0362-005003)
FEMALE PIN AMP P/N 1-66105-8
(JPS P/N 0362-005002)

CONNECTOR AMP P/N 206705-4
(JPS P/N 0362-009001)
MALE PIN AMP P/N 1-66103-7
(JPS P/N 0847-000011)



- NOTES: 1) USE BELDEN 9934 SHIELDED CABLE.
2) CONNECT SHIELD DRAIN TO PIN 1 OF P1 ONLY.
3) CONNECTORS P1 AND P2 MUST BE MOLDED TO THE CABLE.
4) CABLE MUST BE LABELED WITH THE RAYTHEON/JPS P/N AND REV, VENDOR CODE AND DATE (MM/YY).

Designed By: JAC	Raytheon JPS Communications Raleigh, NC USA		
Drawn By: JAC	Title CABLE, ACU-T RADIO EXTENSION - 13 FT		
Checked By: RBP	Size A	Document Number 5961-281013-00	Rev A
Issued Date JANUARY 5, 2004		Sheet <u>1</u> of <u>1</u>	