


Engineer: Jack Curtis	Date: 4/22/04	 JPS Communications 5800 Departure Drive, Raleigh, NC 27616			
Drawn: Jack Curtis	Date: 4/22/04				
Approved: CTS	Date: 4/22/04	Title: ACU RADIO APPLICATION NOTES			
Issued/ Revised	Date: 5/12/05	Size: A	Dwg. #: 5961-271249-APP	Rev: A5	Sheet: 1 Of 1

APPLIES TO:

Ericsson-GE-Macom Jaguar 700Pi Portable Radio
Ericsson-GE-Macom P7100IP Portable Radio

RADIO MODIFICATIONS:

None required.

RADIO PROGRAMMING:

None required.

RADIO CONTROLS:

1. Adjust the Volume Control until the yellow "SIGNAL" indicator on the associated DSP Module flashes with receive audio. This will typically be from $\frac{3}{4}$ to full volume.

CABLING:

Standard ACU-1000 and ACU-T Interface cables are made up of a 2 foot TRP Radio Tray Interface cable and the appropriate 13-foot Extension cable.

ACU-1000 Interface Cable	JPS P/N 5961-291249	(5961-271249 + 5961-261002-00)
ACU-T Interface Cable	JPS P/N 5961-281249	(5961-271249 + 5961-281013-00)
TRP-1000 Shelf Interface Cable	JPS P/N 5961-271249	

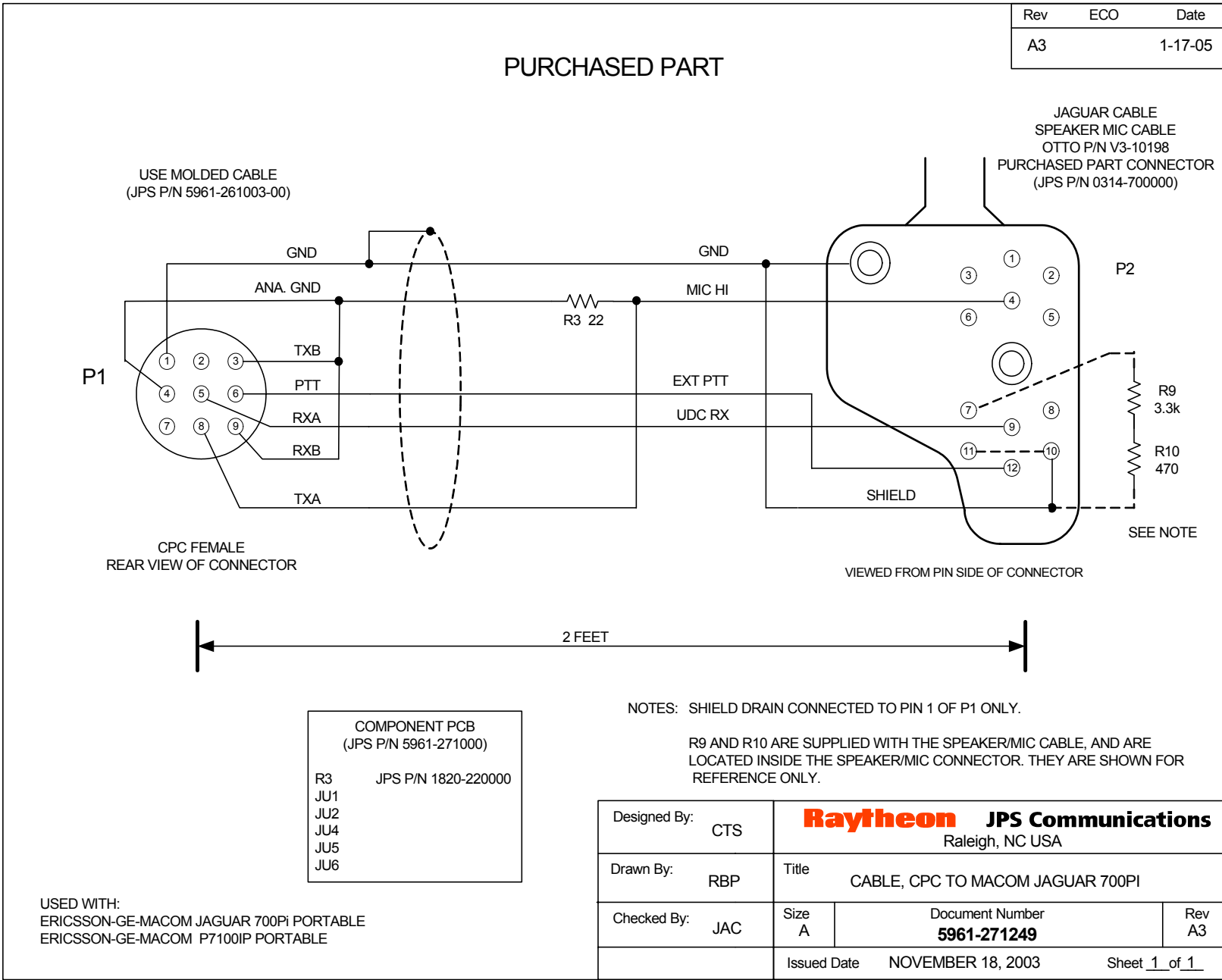
DSP PROGRAMMING:

(See Notes)

RX Level	9	-26dBm
TX Level	6*	0dBm*
Squelch Type	VOX*	
COR Polarity	Active Low*	
High Frequency Equalizer	4*	Flat*
RX Audio Delay	2*	100 ms*
TX Audio Delay (Radio Type)	0*	No Delay*
Noise Reduction Value	0*	Off*
VOX/VMR Threshold	1*	Med1*
VOX/VMR Hang Time	3*	775 ms*
COR Inhibit After PTT	1*	100 ms*
All Others	As needed	

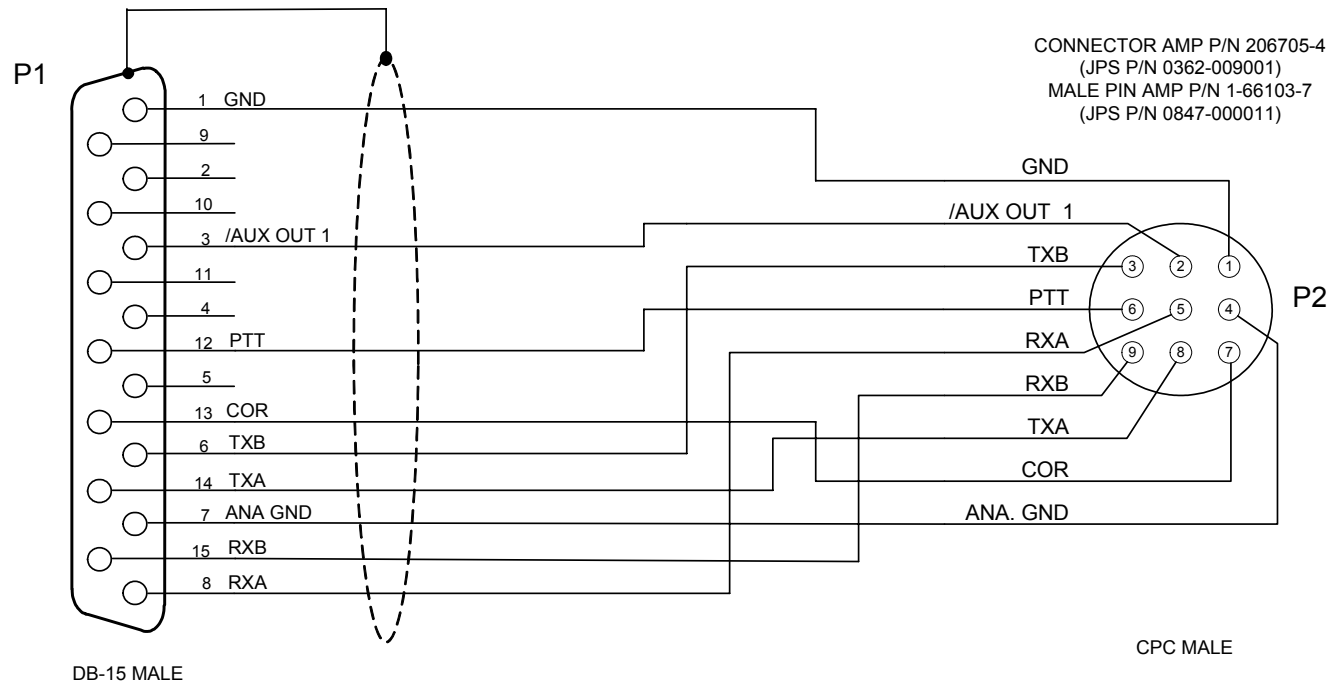
(* Indicates Default Value)

NOTES:



PURCHASED PART

Rev	ECO	Date
A		



- NOTES: 1) USE BELDEN 9934 SHIELDED CABLE.
2) CONNECT SHIELD DRAIN TO SHELL OF P1 ONLY.
3) CONNECTORS P1 AND P2 MUST BE MOLDED TO THE CABLE.
4) CABLE MUST BE LABELED WITH THE RAYTHEON/JPS P/N AND REV, VENDOR CODE AND DATE (MM/YY).

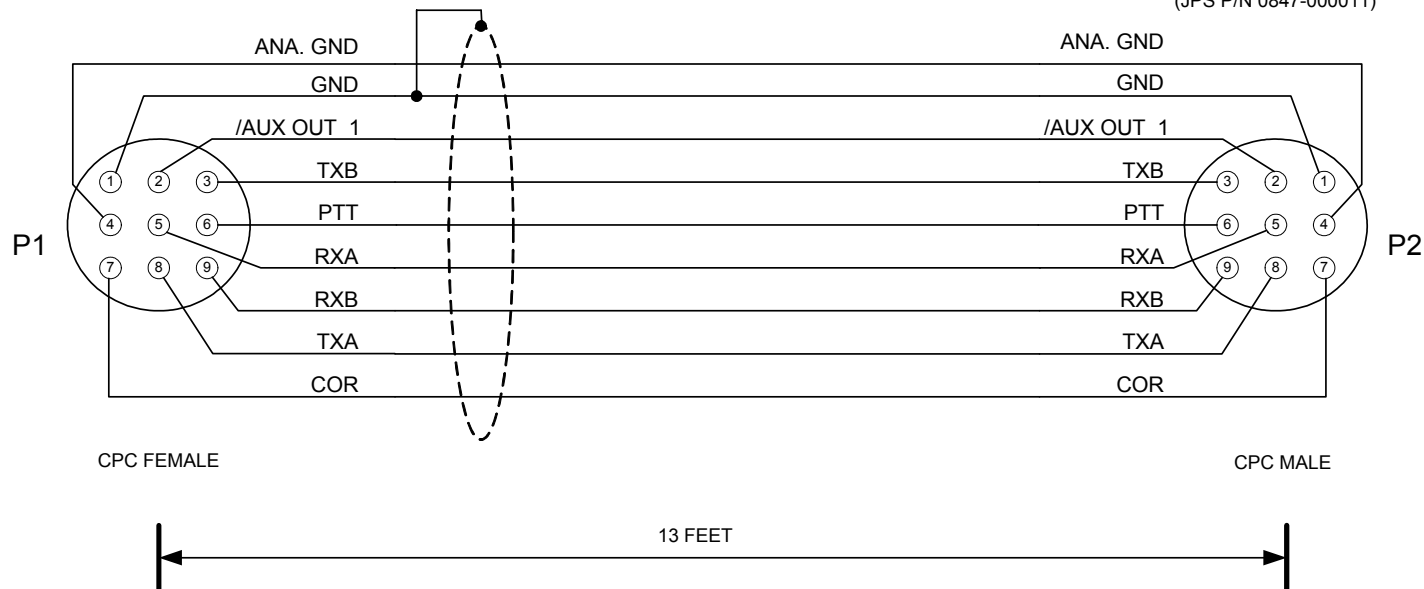
Designed By: JAC	Raytheon JPS Communications		
Drawn By: JAC	Title CABLE, ACU-1000 RADIO EXTENSION - 13 FT		
Checked By: RBP	Size A	Document Number 5961-261002-00	Rev A
Issued Date JANUARY 5, 2004		Sheet <u>1</u> of <u>1</u>	

Rev	ECO	Date
A		

PURCHASED PART

CONNECTOR AMP P/N 206708-1
(JPS P/N 0362-005003)
FEMALE PIN AMP P/N 1-66105-8
(JPS P/N 0362-005002)

CONNECTOR AMP P/N 206705-4
(JPS P/N 0362-009001)
MALE PIN AMP P/N 1-66103-7
(JPS P/N 0847-000011)



- NOTES: 1) USE BELDEN 9934 SHIELDED CABLE.
2) CONNECT SHIELD DRAIN TO PIN 1 OF P1 ONLY.
3) CONNECTORS P1 AND P2 MUST BE MOLDED TO THE CABLE.
4) CABLE MUST BE LABELED WITH THE RAYTHEON/JPS P/N AND REV, VENDOR CODE AND DATE (MM/YY).

Designed By: JAC	Raytheon JPS Communications Raleigh, NC USA		
Drawn By: JAC	Title CABLE, ACU-T RADIO EXTENSION - 13 FT		
Checked By: RBP	Size A	Document Number 5961-281013-00	Rev A
Issued Date JANUARY 5, 2004		Sheet <u>1</u> of <u>1</u>	