

DOCUMENT NUMBER: **MTN-0171-24**ISSUE DATE: **2024-12**

MOTOROLA SOLUTIONS TECHNICAL NOTIFICATION (MTN)

Title

Enhanced Telephone Interconnect (ETI) NEC software release for non-JITC certified servers - security related update

Technology

ASTRO®25 - NEC Univerge 3C Software - Enhanced Telephone Interconnect (non-JITC certified servers)

Severity Recommendation

Medium/Operational - Schedule to implement

Symptoms

Enhanced Telephone Interconnect (ETI) NEC software release for non-JITC certified servers - security related update

Models / System Releases / Kits / Datecodes Affected

System Release	Name / SW version
A2020.1 / A2020.HS / A2021.1 / A2022.1 / A2022.HS / AN2024.1 / AN2024.HS	Enhanced Telephone Interconnect (non-JITC certified servers) - NEC software version 9.2.1.7

When To Apply

During maintenance _X_

Resolution And Repair Procedure

Prerequisites / information required by vendor:

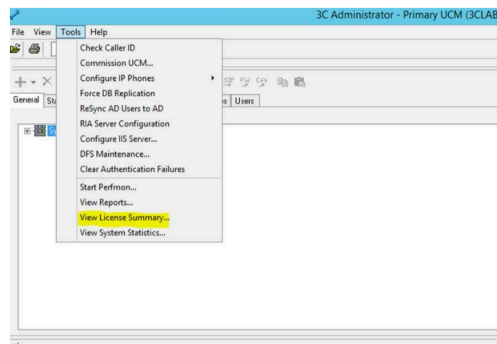
1. Confirm that Univerge 3C software is hosted on the HPE DL160 server.
2. Confirm that the solution does not require JITC (Joint Interoperability Test Command) compliance.
3. Confirm that the following components are already installed on the NEC server:
 - Microsoft Windows Server 2016 Standard version 10.0.14393 Build14393 or later
 - Base NEC software:
 - 3C Administrator version 9.2.1.7
 - 3C Console version 9.2.1.179
 - Microsoft SQL Server Management Studio rel 16.5.3
3. Obtain license number also known as your HKC (Hardware Key Code). Follow the procedure below to locate the license number:

MOTOROLA SOLUTIONS TECHNICAL NOTIFICATION

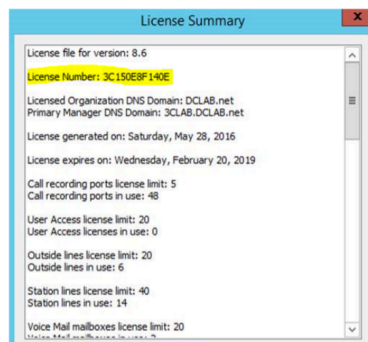
ANY USE NOT APPROVED BY MOTOROLA SOLUTIONS IS PROHIBITED. This Motorola Technical Notification (MTN) is issued pursuant to Motorola's ongoing review of the quality, effectiveness, and performance of its products. The information provided in this bulletin is intended for use by trained, professional technicians only, who have the expertise to perform the service described in the MTN. Motorola disclaims any and all liability for product quality or performance if the recommendations in this MTN are not implemented, or not implemented in compliance with the instructions provided here. Implementation of these recommendations may be necessary for the product to remain compliant with applicable laws or regulations. Please be advised that failure to implement these recommendations in the manner instructed may also invalidate applicable warranties, or otherwise impact any potential contractual rights or obligations. MOTOROLA, MOTO, MOTOROLA SOLUTIONS, and the Stylized M Logo are trademarks or registered trademarks of Motorola Trademark Holdings, LLC and are used under license. All other trademarks are the property of their respective owners. © 2024 Motorola Solutions, Inc. All rights reserved.

DOCUMENT NUMBER:	MTN-0171-24
ISSUE DATE:	2024-12

- a. Open NEC 3C Administrator and go to the *Tools* tab and select *View License Summary...*



- b. License summary window appears. Look for the license number.
NOTE: Standard license number format is 3Cxxxxxxx or NS1000xxx or SPHxxxx.



NOTE: In case of multiple HPE DL160 servers used in the system, license number from each server is required.

4. Prepare contact information for the person who will be performing the update (name, title, email address, phone number).

How to obtain software:

1. Initiate a case through Motorola Solutions, Inc. Centralized Managed Support Operations (CMSO) - see contact numbers at <https://motorolasolutions.com/support> (for NA call directly: 800-MSI-HELP (800-674-4357) or 302-444-9800). **Reference MTN-0171-24** and provide the information from the section [Prerequisites / information required by the vendor](#) above.
 - a. MSI will contact the vendor to confirm entitlement for this update - await response from CMSO or/and NEC (vendor).
 - b. Once entitlement is confirmed, NEC will provide the software and upgrade instructions for NEC Univerge 3C Software from version 9.2.1.7 to version 9.2.1.9. NEC will send an email with a link and a password to access the software update (ISO file) to the person whose contact information was provided.

NOTE: Full process of obtaining SW for upgrade in some cases may take up to a few weeks.

Time To Implement/System Impact

Estimated time to implement - per operator position - 60 min

High - Loss of functionalities/audio/downtime - NEC PBX will be not available during the upgrade

MOTOROLA SOLUTIONS TECHNICAL NOTIFICATION

ANY USE NOT APPROVED BY MOTOROLA SOLUTIONS IS PROHIBITED. This Motorola Technical Notification (MTN) is issued pursuant to Motorola's ongoing review of the quality, effectiveness, and performance of its products. The information provided in this bulletin is intended for use by trained, professional technicians only, who have the expertise to perform the service described in the MTN. Motorola disclaims any and all liability for product quality or performance if the recommendations in this MTN are not implemented, or not implemented in compliance with the instructions provided here. Implementation of these recommendations may be necessary for the product to remain compliant with applicable laws or regulations. Please be advised that failure to implement these recommendations in the manner instructed may also invalidate applicable warranties, or otherwise impact any potential contractual rights or obligations. MOTOROLA, MOTO, MOTOROLA SOLUTIONS, and the Stylized M Logo are trademarks or registered trademarks of Motorola Trademark Holdings, LLC and are used under license. All other trademarks are the property of their respective owners. © 2024 Motorola Solutions, Inc. All rights reserved.

DOCUMENT NUMBER:	MTN-0171-24
ISSUE DATE:	2024-12

Software Parts Required

System Release	Name / SW version	Details / Part Number
A2020.1 / A2020.HS / A2021.1 / A2022.1 / A2022.HS / AN2024.1 / AN2024.HS	NEC software version 9.2.1.9 or later	N/A

Hardware Parts Required

Name	Part Number
HP DL160 Server	N/A

Additional Information

MSI is working on certification of JITC compliant solution.

Reference The Following Documents/Processes For Installation Procedures

N/A

Labor Allowance

This is an informational bulletin. No labor warranty is implied, intended, or authorized.

For assistance with this bulletin please contact your MSI Technical Support Centre at <https://motorolasolutions.com/support>

MOTOROLA SOLUTIONS TECHNICAL NOTIFICATION

ANY USE NOT APPROVED BY MOTOROLA SOLUTIONS IS PROHIBITED. This Motorola Technical Notification (MTN) is issued pursuant to Motorola's ongoing review of the quality, effectiveness, and performance of its products. The information provided in this bulletin is intended for use by trained, professional technicians only, who have the expertise to perform the service described in the MTN. Motorola disclaims any and all liability for product quality or performance if the recommendations in this MTN are not implemented, or not implemented in compliance with the instructions provided here. Implementation of these recommendations may be necessary for the product to remain compliant with applicable laws or regulations. Please be advised that failure to implement these recommendations in the manner instructed may also invalidate applicable warranties, or otherwise impact any potential contractual rights or obligations. MOTOROLA, MOTO, MOTOROLA SOLUTIONS, and the Stylized M Logo are trademarks or registered trademarks of Motorola Trademark Holdings, LLC and are used under license. All other trademarks are the property of their respective owners. © 2024 Motorola Solutions, Inc. All rights reserved.