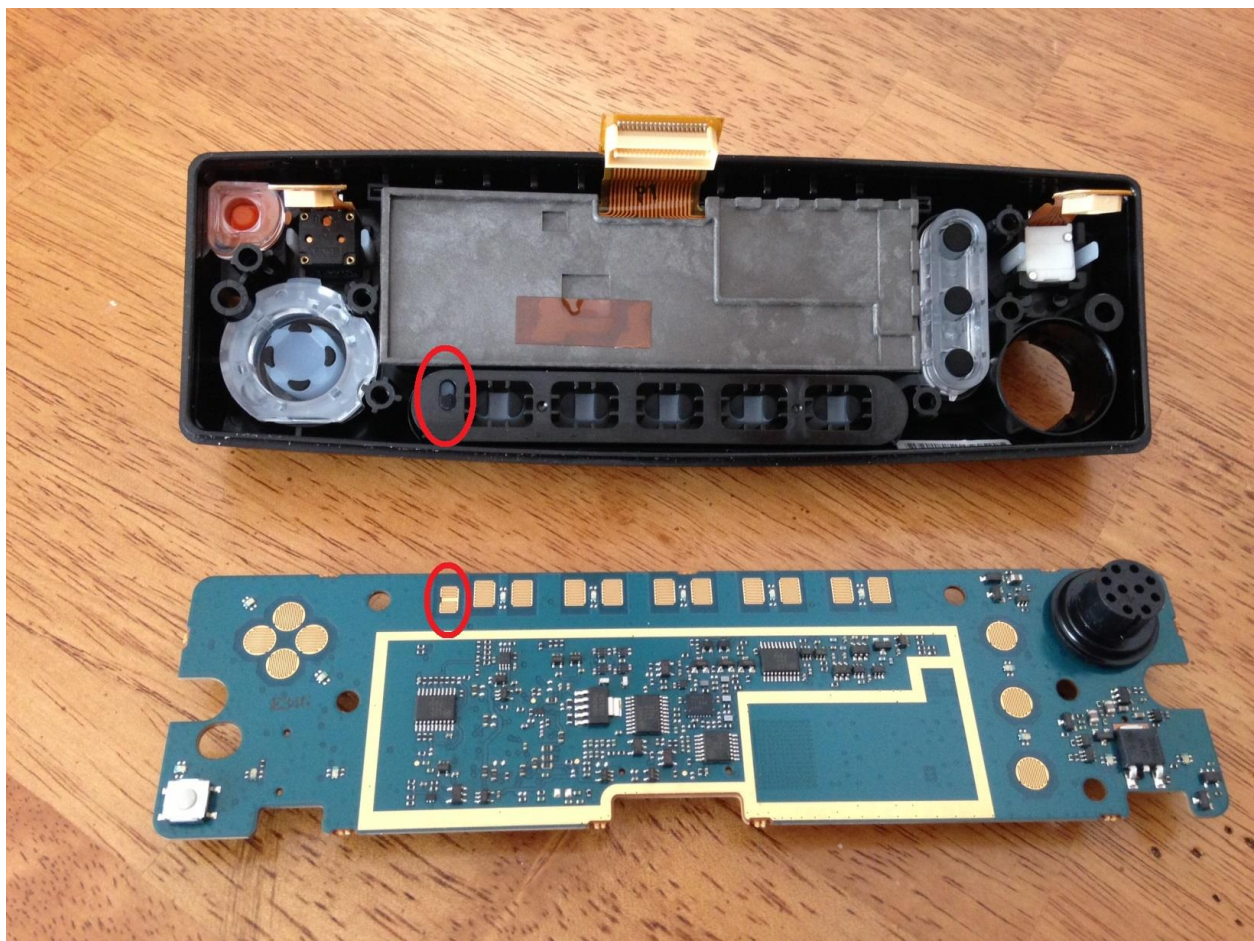


## HOW TO MODIFY YOUR XTL2500, XTL5000, & O5 CONTROL HEAD

This is what I did when I got the “CH MISMATCH” error when trying to change out my control head from a XTL2500 to a XTL500/O5.

I liked the look and shape of the O5 better than the 2500 and that is the reason I changed it.

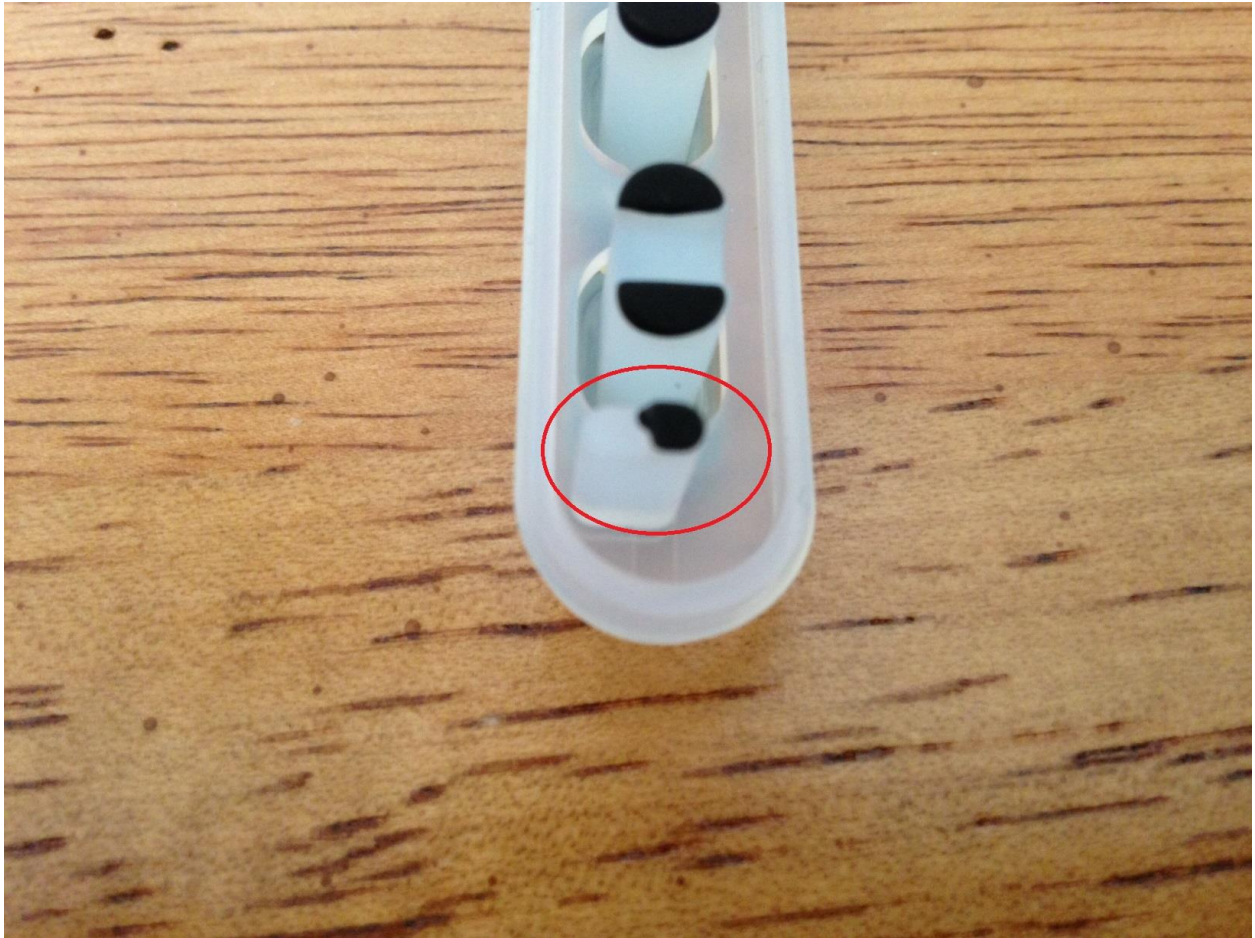
**\*\*\* I AM NOT RESPONSIBLE FOR ANY DAMAGE OR UNDESIRED CORRUPTION OF A RADIO OR CONTROL HEAD THAT MAY HAPPEN DURING THIS PROCEDURE!!!\*\*\* I ASSUME NO LIABILITY AND/OR RESPONSIBILITY FOR YOUR ACTIONS TAKEN AS A RESULT OF THIS GUIDE!!!\*\*\***



Disassemble the control head and these are the contacts that you want to look for.

NOTE: the position of this head is an XTL2500. You can see that the “rubber contact” is in the “down/bottom” position.

To make this work on a XLT5000 you would need to cut the rubber and flip to the “top/up” position.



Above is the rubber keypad/keys that have been removed from the front control head housing.

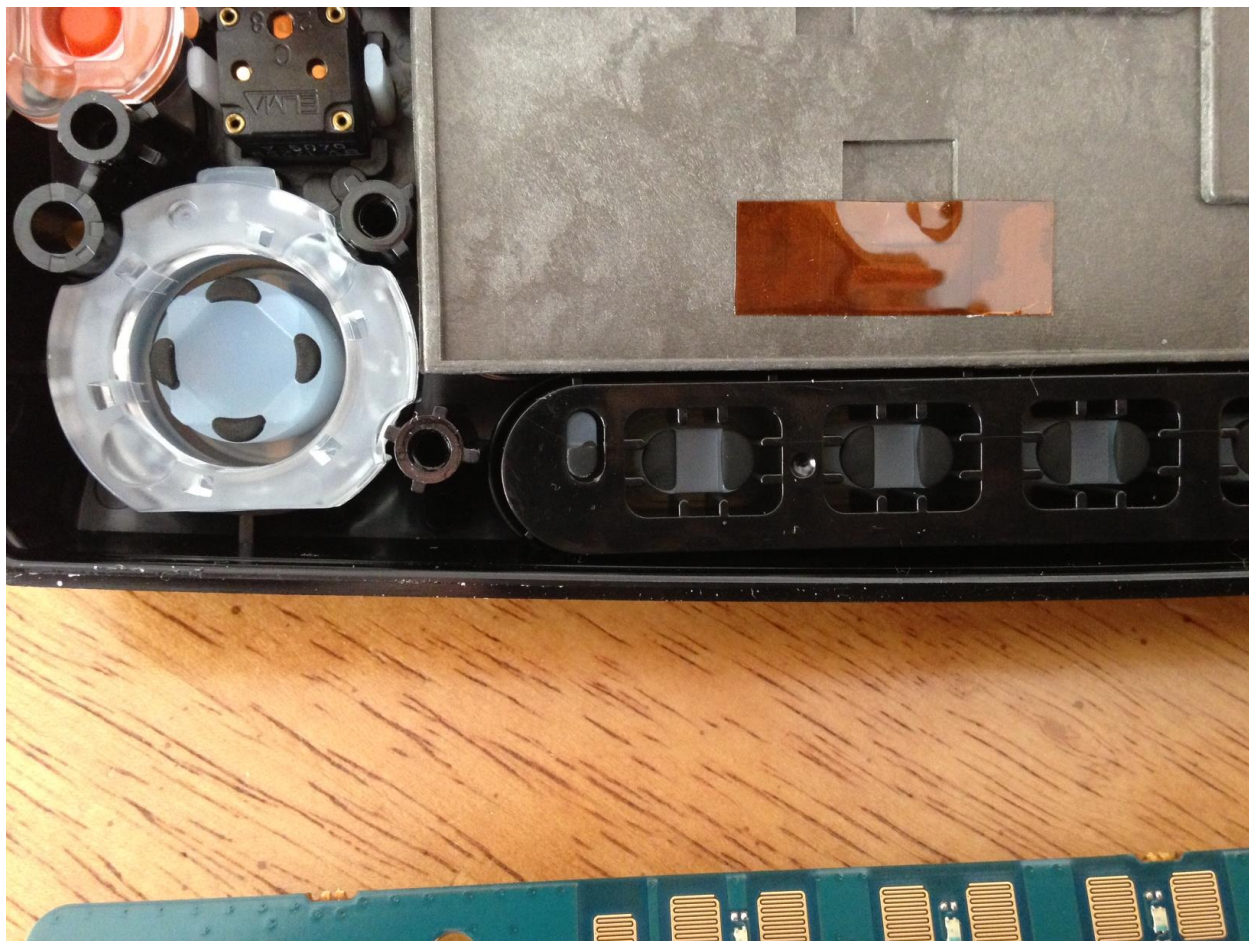
This is a XTL2500 position shown above. To modify, cut this tab horizontal about  $\frac{1}{2}$  way down and when re-assembling the head, put this tab in so the black contact faces up to be used as a XTL5000 or O5 head.

To be clear:

Contact on TOP= XTL5000 or O5

Contact on BOTTOM= XTL2500





This is the standard XTL2500 configuration. All the part numbers from both the circuit boards are identical.