
Control Head Synchronization file

* ASTRO 25 Mobile CPS MUST be installed before copying this file over*

Control Head Synchronization file (Astro_25_CH_xx.cnv) is used by the 'Synchronize Control Head with Radio' feature in the ASTRO 25 Mobile CPS.

This feature can be found under CPS Menu Bar -> 'Tools' menu.

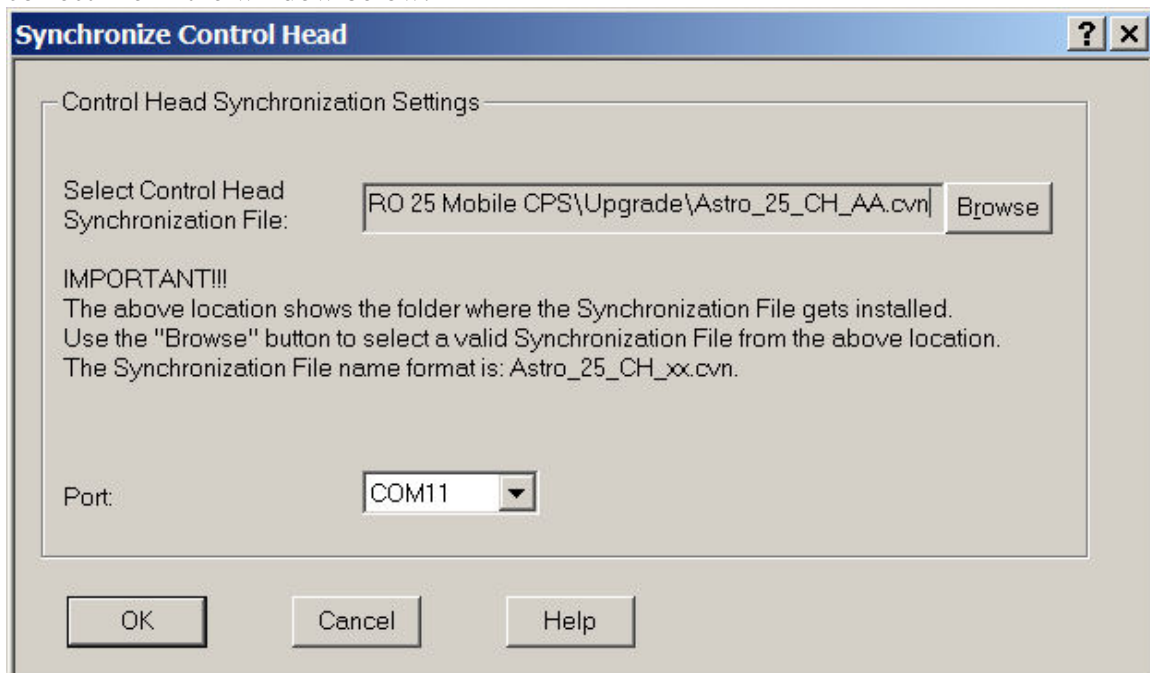
The 'Synchronize Control Head with Radio' feature updates the software in the attached control head (s) to match with the software in the radio.

Warning: Only use this feature when the control head powers-up in 'Maintenance Mode'.

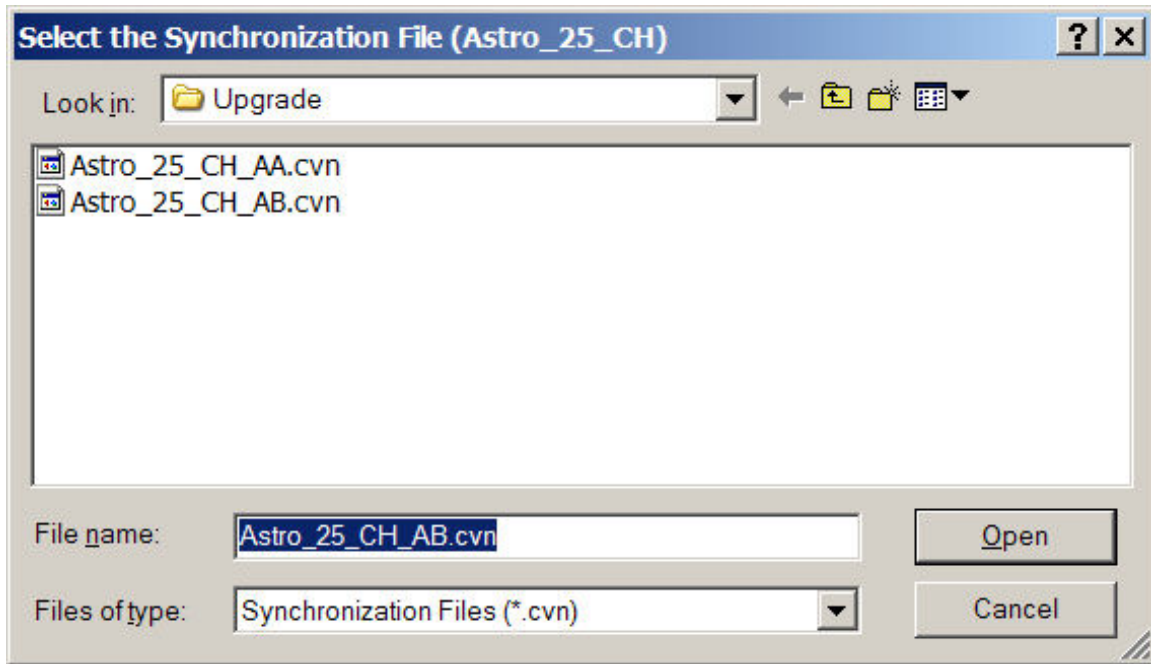
The Control Head Synchronization file contains all of the software versions for the Control Head and a new version is released every time a new radio software version is available.

Please make sure to copy this file in the 'Upgrade' folder of the ASTRO 25 Mobile CPS directory. For example, if the ASTRO 25 Mobile CPS is installed in the default directory, then there already exists a copy of this file at: C:\Program Files\Motorola\ASTRO 25 Products\ASTRO 25 Mobile CPS\Upgrade

When using the 'Synchronize Control Head with Radio' feature, make sure to select the correct file in the window below:



Selecting the 'Browse' button will point to the 'Upgrade' folder where all of the Astro_25_CH_xx.cvn files are located :



Make sure to select the most recent Control Head Synchronization file.