



MCC 5500 DISPATCH CONSOLE

UPDATING THE USB DRIVER ON WINDOWS XP/VISTA

This document contains procedures for updating the MCC 5500 Dispatch Console USB driver on Windows XP and Windows Vista operating systems.

The procedures assume that you have the two files required for updating the driver:

- USBCML.inf
- USBCML.sys

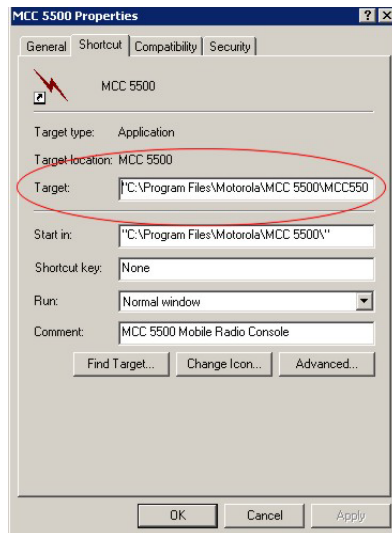
BEFORE YOU UPGRADE

You need to find the directory path of the driver files on the console. You will upgrade the driver files from this folder.

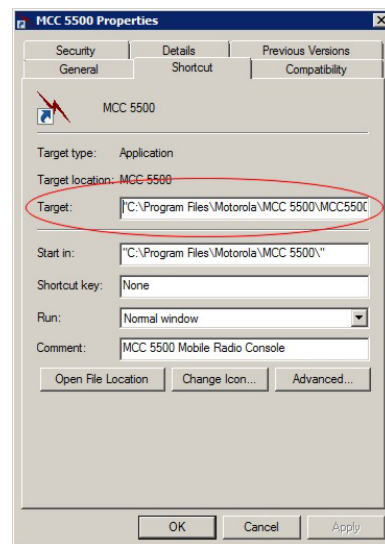
- 1 To find the current data path of the MCC Dispatch Console USB driver files, right-click the MCC 5500 shortcut (commonly found on the **Start** menu or desktop) and select **Properties** and click the **Shortcut** tab.

Part of the USB driver path appears in the **Target** box (ignore **MCC5500.exe**): e.g., **C:\Program Files\Motorola\MCC 5500**.

Windows XP



Windows Vista



The full path of the console USB drivers is the path in the **Target** box plus **\Drivers\USB**: e.g., **C:\Program Files\Motorola\MCC 5500\Drivers\USB**

- 2 Note this location. You will copy the updated USB driver files to it.
- 3 Copy and paste the driver files **USBCML.inf** and **USBCML.sys** to the file directory you noted in Step 1. In Windows Vista, you *copy and replace* the existing files.

- 4 Using a text editor, such as Notepad, open the **USBCML.inf** file in the console file directory to ensure that the Version Section shows the **2.6.0.6** driver.

```
;----- version section --  
[version]  
Signature="$windows NT$"  
Provider=%ProviderName%  
DriverVer=6/1/2011,2.6.0.6
```

WINDOWS XP

- 1 Close the MCC 5500 Dispatch Console application.
- 2 Click **Start > Control Panel > System**.
- 3 On the **System Properties** dialog box, click the **Hardware** tab.
- 4 Click the **Device Manager** button.
- 5 Click the **Universal Serial Bus controllers** tree header to open the USB driver list.
- 6 Right-click **MCC 5500 Dispatch Controller** and select **Update Driver**.
The Hardware Update Wizard appears.
- 7 Select the **No, not this time** option and click **Next**.
- 8 Select the **Install from a list or specific location (Advanced)** option and click **Next**.
- 9 Do the following:
 - Select the **Search for the best driver in these locations** option.
 - Uncheck the **Search removable media (floppy, CD-ROM...)** check box.
 - Enable the **Include this location in the search** check box. If necessary, click **Browse** and navigate to the location of the upgraded USB driver files from "Before you upgrade":
e.g., **C:\Program Files\Motorola\MCC 5500\Drivers\USB**.
- 10 Click **Next**.
If a Hardware Installation dialog box warns you about potential driver incompatibility, click the **Continue Anyway** button.
The installation stops when the wizard reports that the installation has completed.
- 11 Click **Finish**.
- 12 Restart the console computer if you are prompted to do so.
The **MCC Dispatch Console** USB driver appears in the **Universal Serial Bus controllers** list of the **Device Manager**.
- 13 Verify that the USB driver has been successfully upgraded:
 - Right-click the **MCC Dispatch Console** USB driver in the **Universal Serial Bus controllers** list of the **Device Manager** and select **Properties**.
 - Click the **Driver** tab. The **Driver Version** should be **2.6.0.6**.

WINDOWS VISTA

In Windows Vista, you are sometimes prompted by a **User Account Control** dialog box to press **Continue** before proceeding with a step. Not all steps are necessary on all Vista systems, so exceptions are noted where they appear.

- 1 Close the MCC 5500 Dispatch Console application.

- 2 Click **Start > Control Panel > Device Manager**.
- 3 Double-click **Universal Serial Bus controllers**.
- 4 In the list of USB drivers, right-click **MCC 5500 Dispatch Console** and select **Uninstall**.
- 5 In the **Confirm Device Uninstall** dialog box, enable the **Delete the driver software for this device** check box.
- 6 Click **OK**.
- 7 Restart the computer from the **Start** menu.
- 8 After the computer has restarted, log into the system.
A **Found New Hardware** dialog box appears after you have logged in.
- 9 Click the **Locate and install driver software (recommended)** link.
- 10 Click the **Don't search online** link if it appears on the next screen. Otherwise, continue to step 11.
- 11 Click the **I don't have the disc. Show me other options** link.
- 12 Click the **Browse my computer for driver software (advanced)** link.
By default, the MCC 5500 Dispatch Console USB driver file path you noted in "Before you upgrade" should appear in the **Search for driver software in this location** box:
e.g., **C:\Program Files\Motorola\MCC 5500\Drivers\USB**.
If this file path does not appear, click **Browse** and navigate to the folder containing the upgraded USB driver files that you copied in "Before you upgrade."
- 13 Click **Next**.
- 14 In the **Windows Security** dialog box, click the **Install this driver software anyway** link. The installation starts.
- 15 Click **Close** on the dialog informing you that the driver software has installed successfully.
- 16 Restart the console computer if you are prompted to do so.
The **MCC Dispatch Console** driver appears in the **Universal Serial Bus controllers** list of the **Device Manager**.
- 17 Verify that the USB driver has been successfully upgraded:
 - Right-click the **MCC Dispatch Console** USB driver in the **Universal Serial Bus controllers** list of the **Device Manager** and select **Properties**.
 - Click the **Driver** tab. The **Driver Version** should be **2.6.0.6**.