

SmartPTT PLUS 9.14.100

Customer Release Notes



MOTOTRBO

#firmware #mototrbo

M2025.01

SmartPTT supports the newest MOTOTRBO release. This includes IP Site Connect, Capacity Plus, and Capacity Max. Also, the release is applicable to wireless interfaces supported in SmartPTT.

CONNECT PLUS R2.10.5

SmartPTT keeps supporting Connect Plus systems upgraded to MOTOTRBO release R2.10.5.



Enhanced Accessory Support

#audio #accessories

SmartPTT implements better support for audio and dispatch accessories. This includes desktop microphones, speakers, headsets, footswitches etc.

Enhancements are as follows:

- Correct device recognition upon the USB port change. You can re-plug your accessory if your current USP port is malfunctioning or broken.
- Correct device recognition after the operating system updates installation. You can plan your OS updates and be aware that SmartPTT remains operable.

⚠ SmartPTT team recommends you [disable automatic operating system updates](#) to avoid unexpected downtime of your dispatch solution.

Customer and partner benefits are as follows:

- Reduced maintenance expenses on the Dispatcher App setup and maintenance.
- Increased reliability of the product used in daily operations.



Speaker Role Updates

#audio #headsets #speakers

SmartPTT introduces the revised audio module. Changes impact Select Speaker, Unselect Speaker, Emergency Speaker, System Speaker, as well as custom (monitor) speakers.

- SmartPTT switches to Select and Unselect Speakers as primary and required speakers. If any other speaker fails, corresponding audio will be routed to Select/Unselect Speakers.
- Error and warning indication is now available during the speaker setup process.
- Main Audio Device¹ becomes optional. Now you can transform it from stereo speaker to mono speaker or remove it at all
- Refactoring is made in the audio system of the Dispatcher App for better quality and performance.

Customer and partner benefits are as follows:

- Increased audio quality that eases the use of the product.
- Reduced maintenance expenses due to greater compliance with the industry-standard speaker roles in dispatch solutions.

¹ Main Audio Device was a non-removable set of audio outputs which configuration copied default audio device of the operating system.

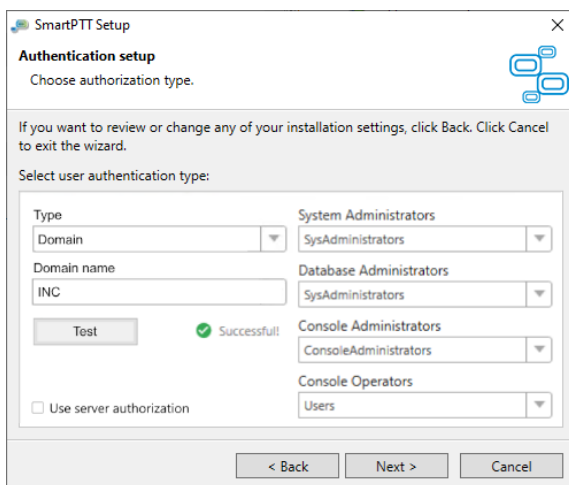
Authentication Updates

#authentication #active-directory

SmartPTT provides the ability to set up centralized authentication. This mode is the opposite to what was available in SmartPTT before the release.

Earlier, users could log on to the Dispatcher App even if it was disconnected from the SmartPTT server. They could do that for re-configuration or report creation. This behavior raised security and feasibility concerns, especially among customers who need [Active Directory support](#).

Centralized authentication is optional. It is configured during the product installation/upgrade and can be changed only by the modification of the installed product.



Customer and partner benefits are as follows:

- Increased product compliance with corporate cyber security requirements.
- Reduced maintenance expenses by switching to the centralized user management system.



Quiet Mode Installation

#installation #quiet-mode

SmartPTT provides the ability to install and uninstall its components from the command line. The options support authentication mode selection and user group setup for domain and local modes.

Customer and partner benefits are as follows:

- Reduced maintenance expenses on the product installation.
- Opportunity to automate the product installation and upgrade on remote sites.

⚠ Remote installation requires network access to the SmartPTT installation package.



Contact Us

SmartPTT is developed and released by Elcomplus Inc., a Florida corporation (US). For more information on the product, visit <https://smartptt.com/products/smartptt/>

TECHNICAL SUPPORT

To contact a technical support engineer, use the following information:

- Email: support@smartptt.com
- Web form: <https://support.smartptt.com/hc/en-us/requests/new>
- Phone: [+1-786-362-5525](tel:+1-786-362-5525)

SALES & MARKETING

If you have any questions related to the product sales, email to sales@smartptt.com

If you have any questions related to the product marketing, email to marketing@smartptt.com

FEEDBACK & PROPOSALS

For any feedback on the product (including feedback on the documentation), please email to feedback@smartptt.com