

CURVE WIFI ENHANCED BUSINESS RADIO FIRMWARE UPDATE TOOL **APRIL 11, 2023.**

Curve two-way radios firmware to be updated from:- Firmware Version R01.01.00 to R01.02.00

Equipment/Tools needed to perform software update

1. Prepare the below equipment.
 - a. CPS Cable kit is HKKN4025A.
 - b. Single Unit Charger/docking station PMPN4587A.



Computer System Requirements

1. Computer with Windows 10 & 11 operating system.
2. Computer with USB port.

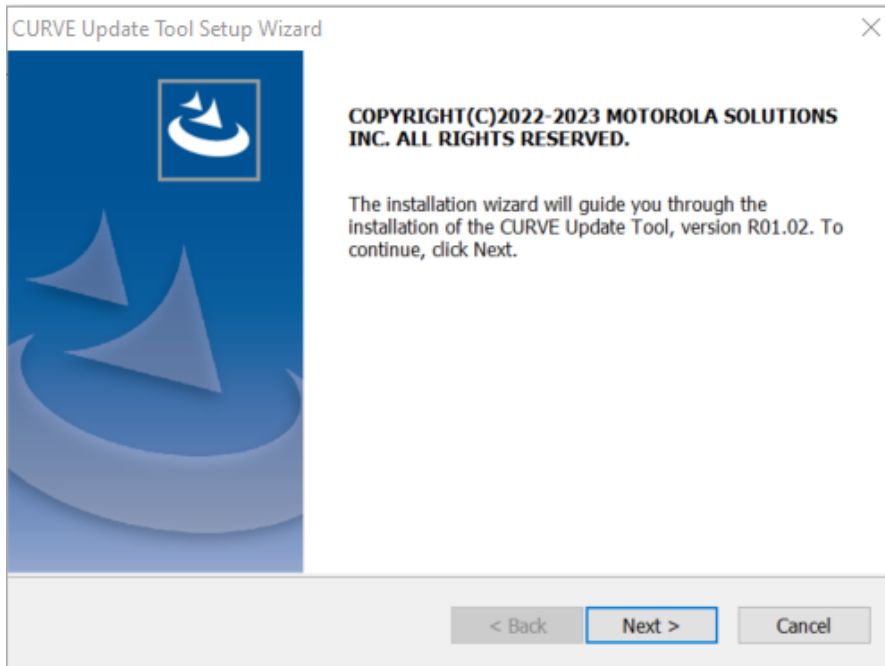
Note

1. Only 1 radio can be updated at any one time.
2. Please ensure radio battery is fully charged before update commences.

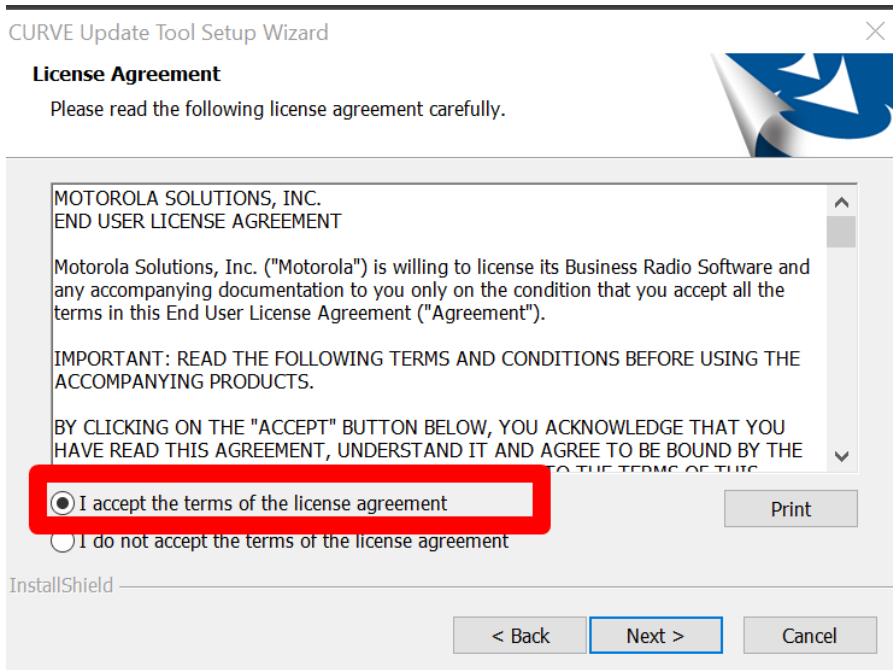
Setup Steps (one time)

1. Connect the programming kit docking/charging station to computer using the USB programming cable from the programming kit.
2. On the programming cable HKKN4025, please make sure to set the mode switch to Digital CPS.
3. Observe your computer will scan and install the programming cable driver automatically at the background (task tray for Windows computer). This will take a while.
4. Please wait until the driver installation is completed.

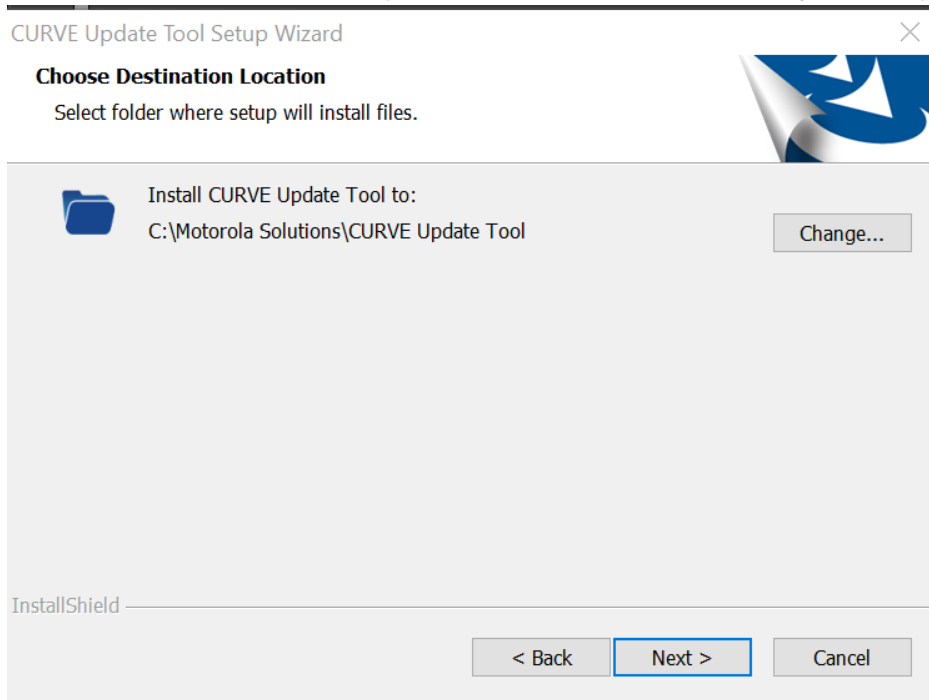
5. Download and double click to install the Update Tool application (provided by Motorola Team) into the computer.
6. Click Next to continue the installation.



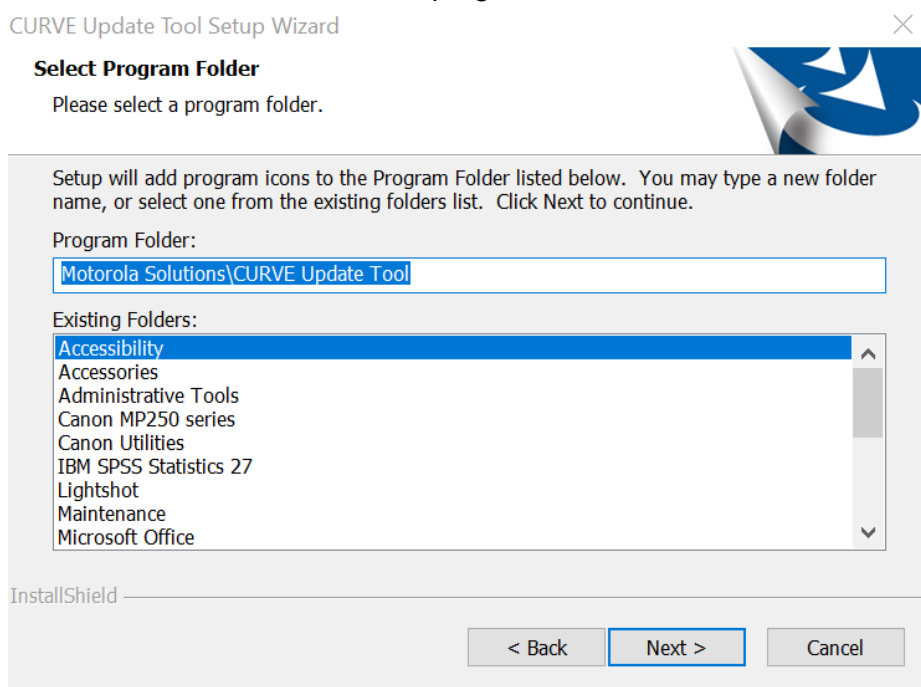
7. Click to accept the agreement and click "Next".



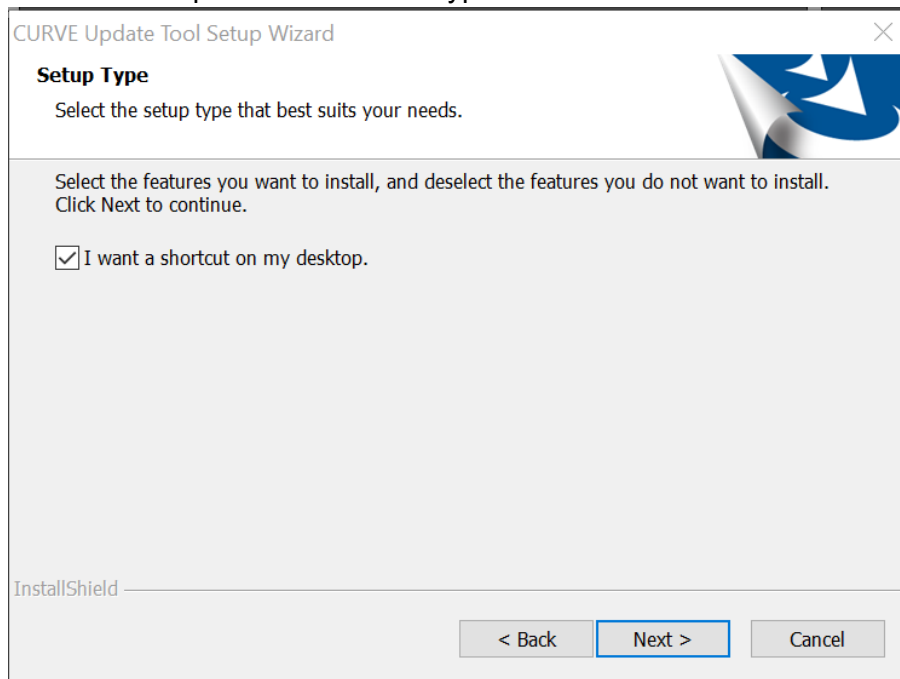
8. Click “Next” to install Curve Update Tool in default location in your computer.



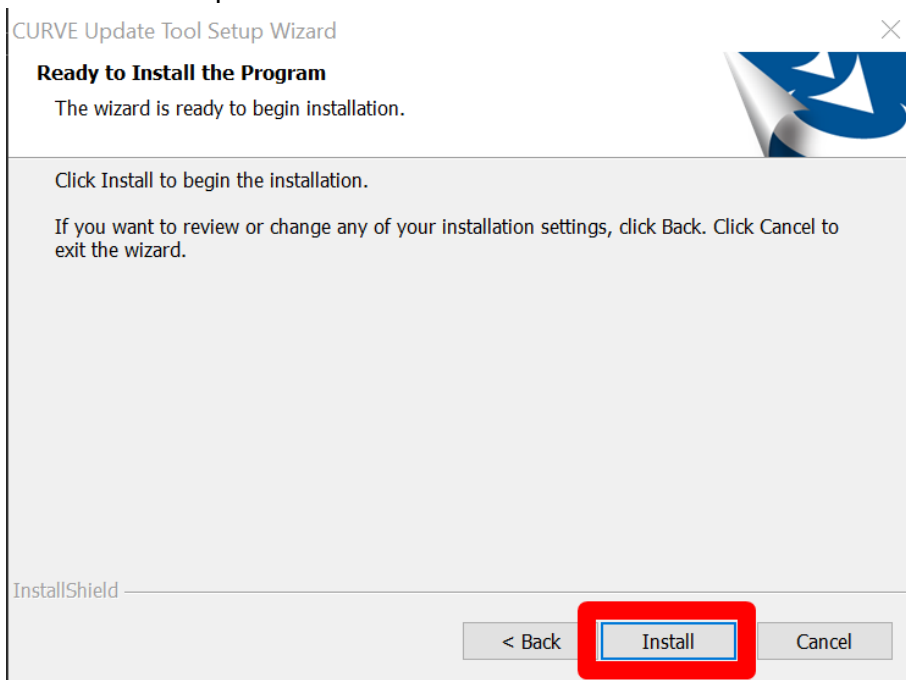
9. Click “Next” to select the default program folder.



10. Click “Next” to proceed the install type.

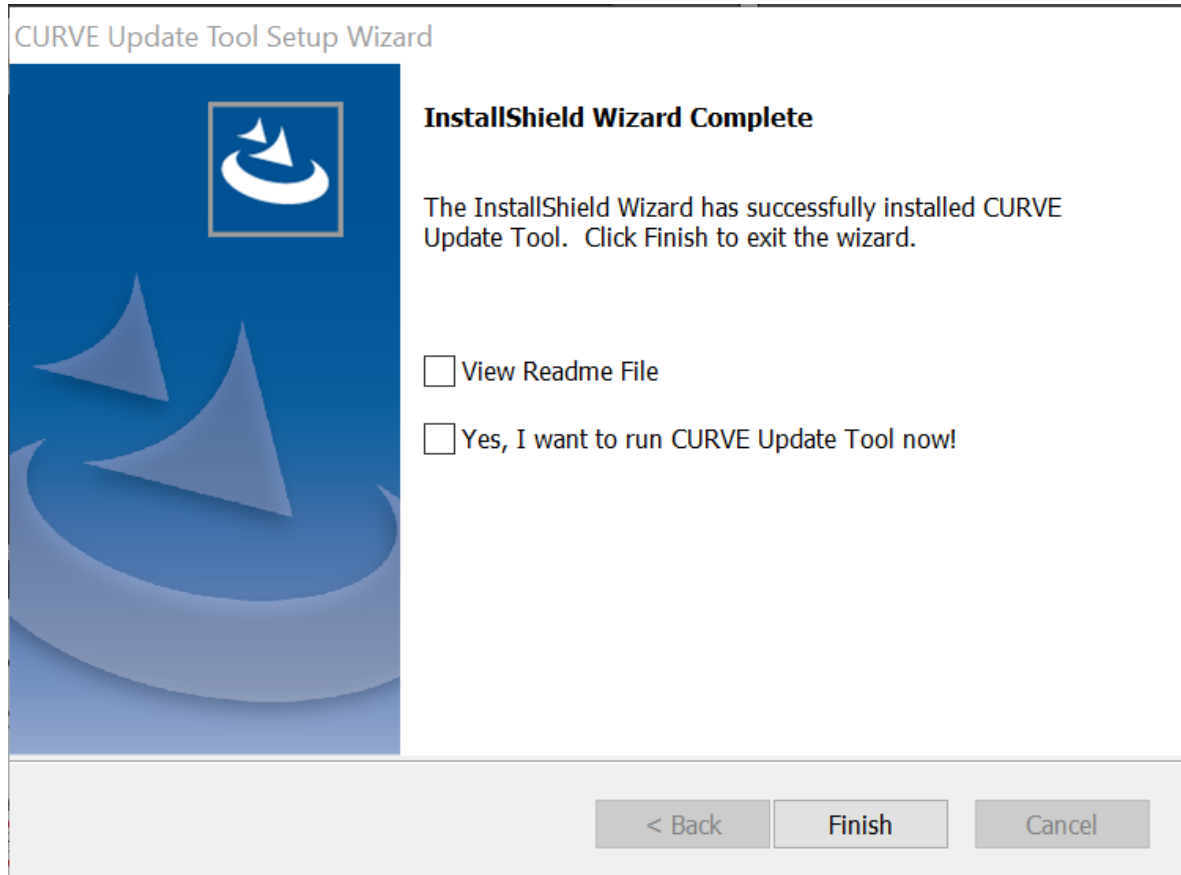


11. Click “Install” to proceed installation.



12. The installation will take a few minutes.

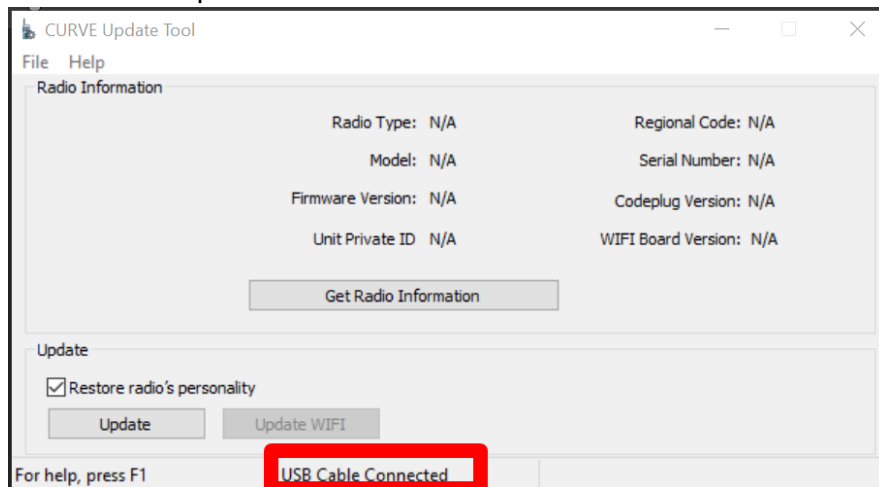
13. Once the installation is finished, check the checkbox to run the Update Tool now. Then click "Finish".



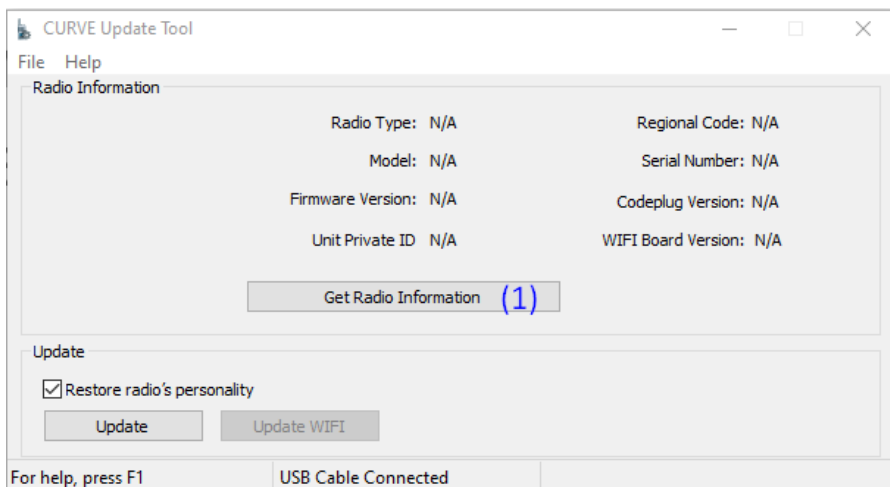
14. This ends your one time setup steps.

Steps to update radio firmware from R01.01.00 to R01.02.00

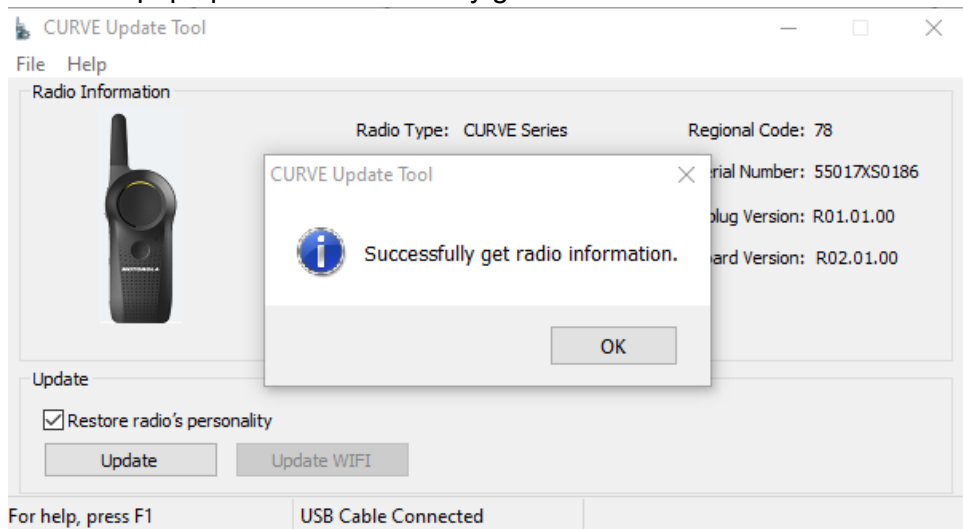
1. Before starting, ensure no other USB devices are plugged into your computer except keyboard and mouse.
2. Execute/Run the Update Tool program with computer connected to radios via cable and docking station, please wait for a while, you should see “USB Cable Connected” at the bottom of the Update Tool.



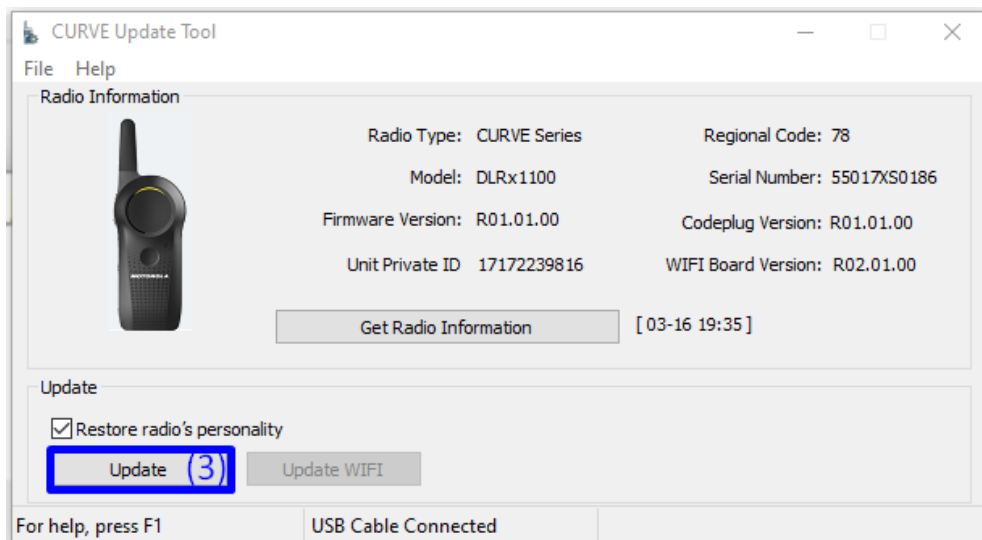
3. If you do not see “USB Cable Connected”, please check if your computer has successfully installed the programming cable driver.
4. **Ensure the battery is full** and inserted into the radio then turned ON the radio. Put the radio onto docking/programming/charging station.
5. Click “Get Radio Information” button to read the current radio information and show on the screen.



6. Observe a pop up show “Successfully get radio information”.



7. Ensure the radio model is the one you want to upgrade and with correct firmware version which is R01.01.00 in this example. Do not proceed update if the radio is not the correct model/firmware version.

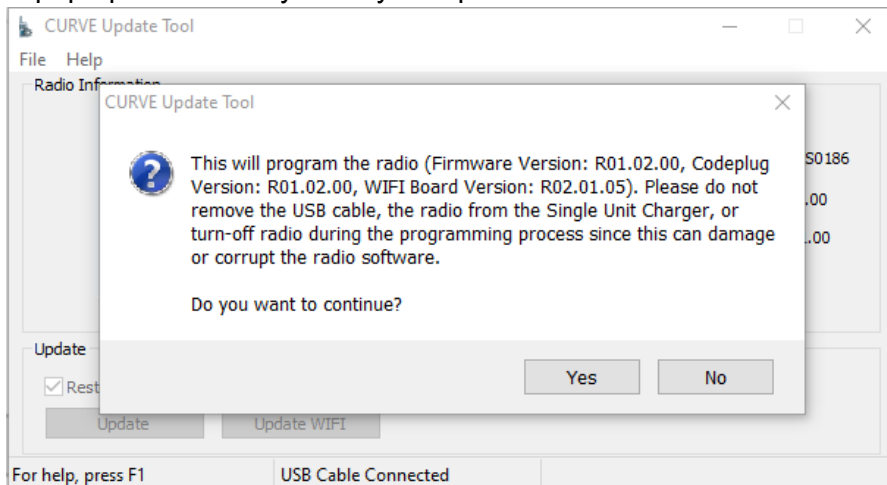


8. Click Restore if need you need to restore your previous configurations.

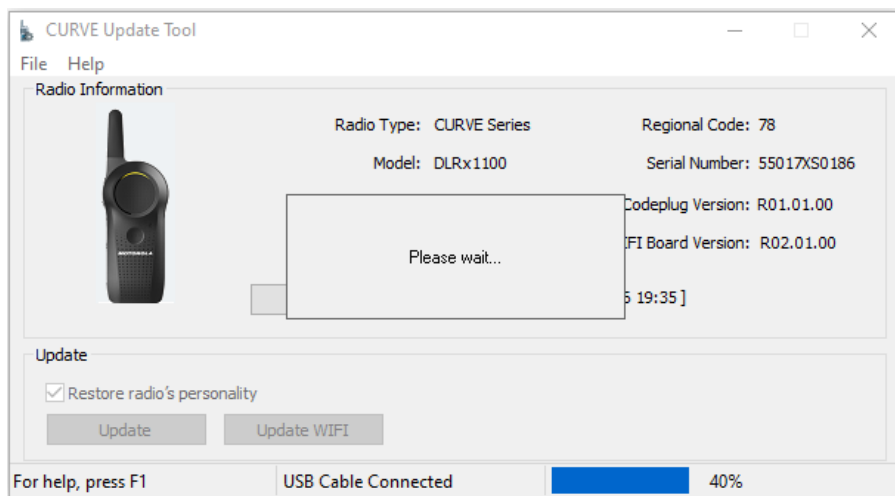
9. Click the “update” button to update the radio to the new firmware.

***Do not disconnect and do not power down the radio during the upgrade process.

10. A pop up will remind you on your update information and cautious. Click the “Yes” button.

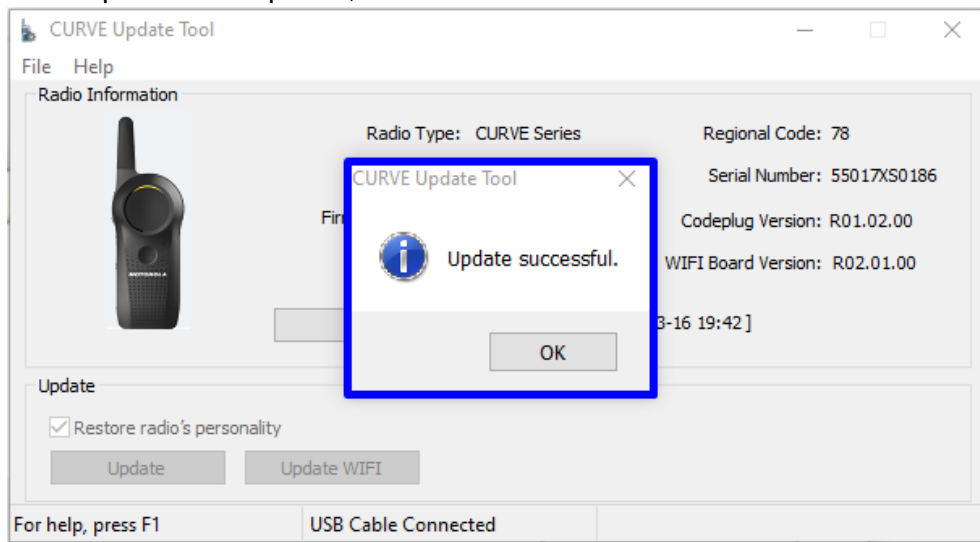


1. There will be progress meter at the bottom of the tools. Screen will show Please wait and the progress.

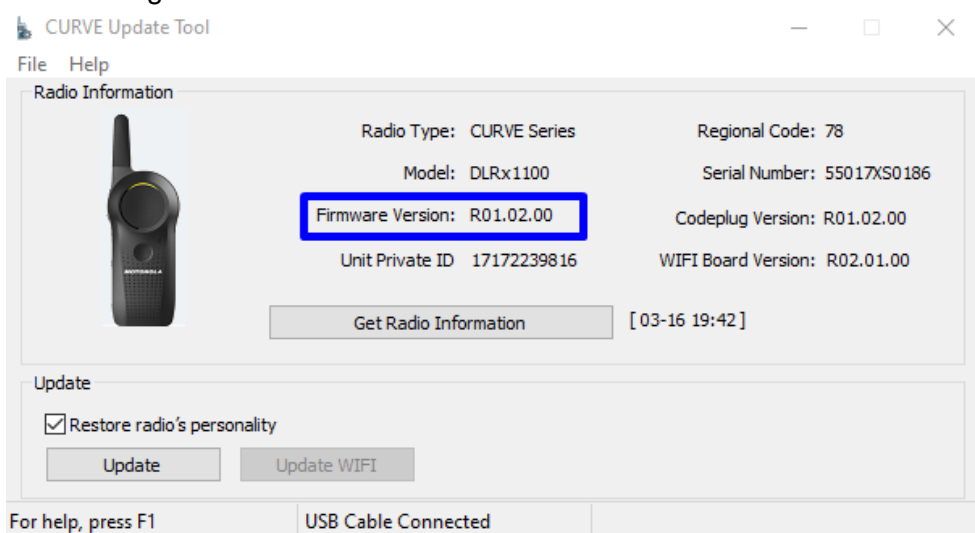


2. If you see failure, please try power cycle your radio and perform upgrade again.
3. if the radio still cannot upgrade again or if the radio shows any symptom cannot power up or showing any failure, please return your radio for warranty.

4. Once update is completed, below screen will be shown.



16. Check the Radio Information in CURVE update Tool and make sure all firmwares version are the same as figure below.



17. Please wait for radio to complete the restart before unplugging the radio from the docking/charging station.
18. If you see failure, please try power cycle your radio and perform upgrade again.
19. if the radio still cannot upgrade again or if the radio shows any symptom cannot power up or showing any failure, please return your radio for warranty.

Minimum PC Spec requirement

1. Intel core i5-3320M @2.60 Ghz
2. 8 GB RAM
3. Windows 10, 64-bit OS
4. 320 GB HDD

Notes

*There will be a chance of failing during the update depending on the computer usage and environment.

*Please close all the running applications before starts updating.

*If failure persists, please stop upgrade using this computer and try another computer. If failure still persists, please do not perform upgrade and get to Motorola support.