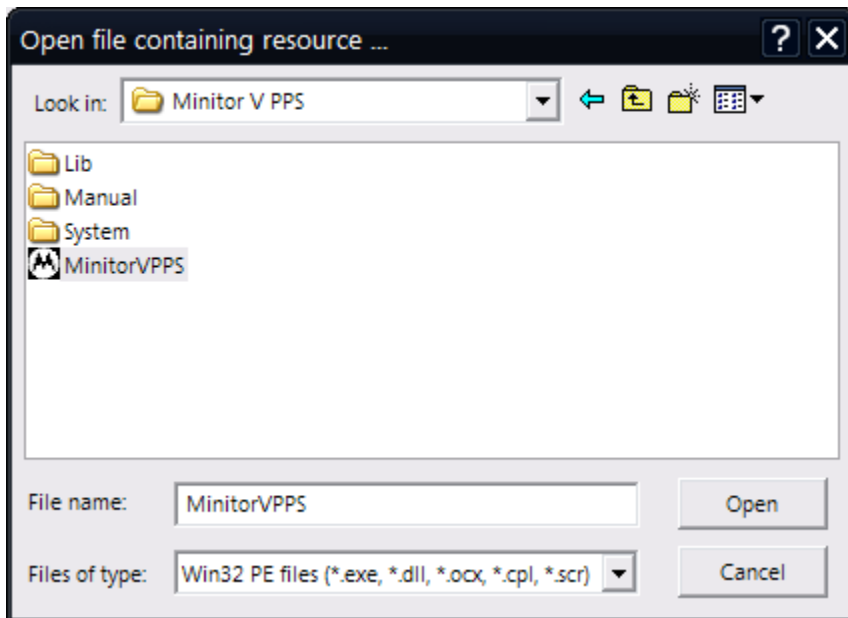


First off, I used a free file editor called Resource Hacker; you can download this at <http://bit.ly/4FUKg>.

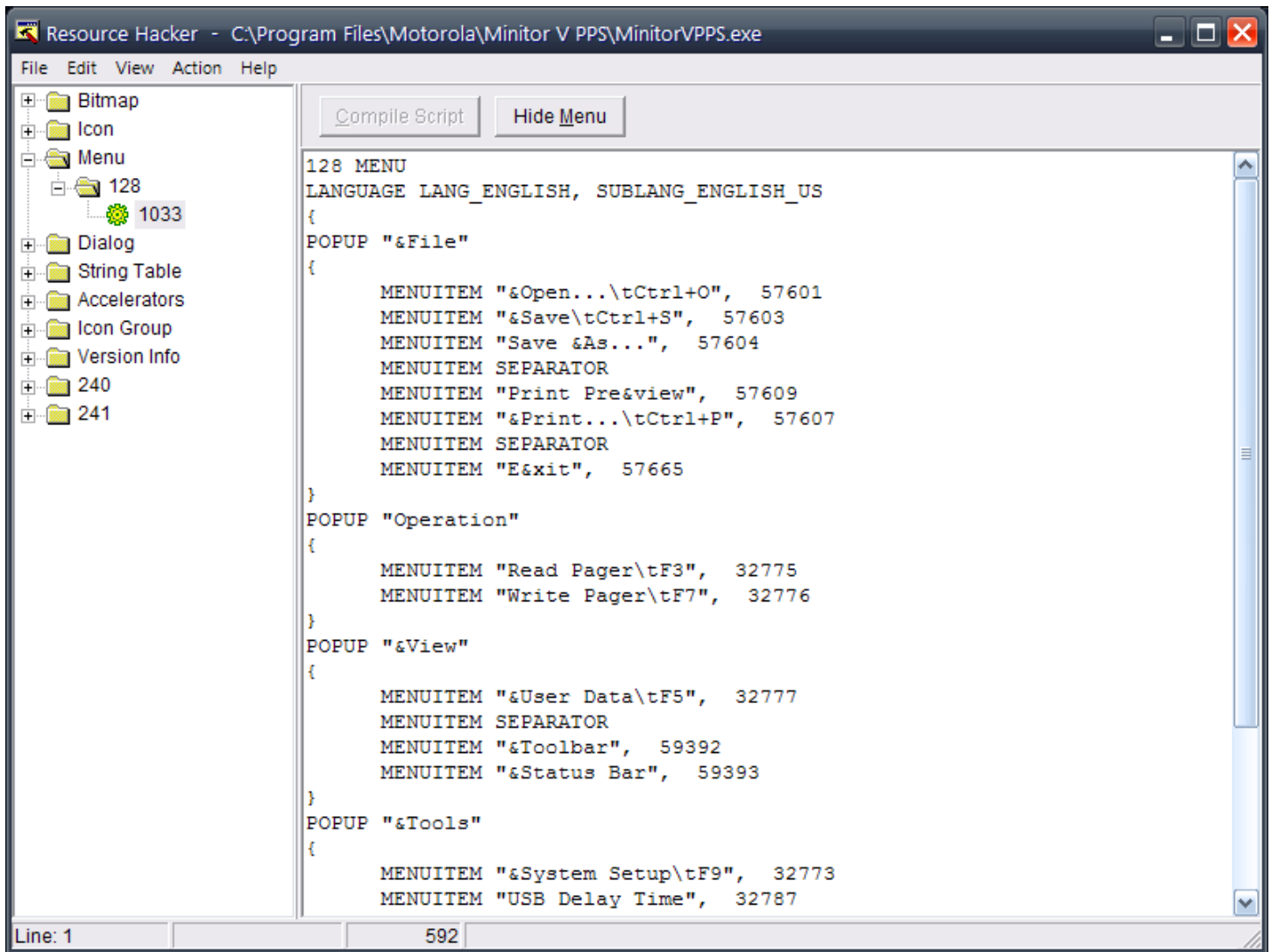
Once you have Resource Hacker installed, open it and go to File > Open. Browse to the location where the Minitor V PPS is installed on your hard drive. Once you have found that folder, choose the file called MinitorVPPS.exe.



Now that you have the file opened, we are ready to begin modifying it.

**WARNING:** Changing unnecessary parameters can cause the software to break; only change what is needed by this tutorial!

The first parameter that we will need to modify is the main menu that runs across the top of the PPS. To modify this menu, in the "tree" along the side browse to Menu > 128 > 1033. Out to the side you should see a bunch of text appear (as shown below), this is what you will be modifying.



Go to the section that reads:

```
POPUP "Operation"
{
    MENUITEM "Read Pager\tF3", 32775
    MENUITEM "Write Pager\tF7", 32776
}
```

This is the 'Operation' menu, where we will add the "Engineer Logon" menu item.

Go to the end of the line ending in '32776' and hit enter to create a new line. We will now add a separator line to separate the new option from the old ones. On the new line, make sure it is tabbed in to align with the others, and add the following:

Code: [Select all](#)

```
MENUITEM SEPARATOR
```

At the end of this line, hit enter again to create a new line.

On this line we will add the option to logon into the 'Engineer Mode'. Again, make sure you are tabbed in with the previous line and add:

Code: [Select all](#)

```
MENUITEM "Engineer Logon", 32774
```

At this time, the block of text should look similar to the following:

```
POPUP "Operation"
{
    MENUITEM "Read Pager\tF3", 32775
    MENUITEM "Write Pager\tF7", 32776
    MENUITEM SEPARATOR
    MENUITEM "Engineer Logon", 32774
}
```

Next, we will move on to the 'View' menu, which is the block of text directly following the Operation menu and should look like:

```
POPUP "&View"
{
    MENUITEM "&User Data\tF5", 32777
    MENUITEM SEPARATOR
    MENUITEM "&Toolbar", 59392
    MENUITEM "&Status Bar", 59393
}
```

Go to the end of the line ending in '32777' and hit enter to create a new line. On this new line, make sure it is tabbed in to align the the other lines and add:

Code: [Select all](#)  
MENUITEM "&Engineer Data", 32778

Once you have added the final menu item, we are finished modifying the PPS. In order to save the changes we have made to the script, we need to click the 'Compile Script' button at the top of the Resource Hacker window.

After compiling the script, go to File > Save As. Depending on your preference, you can either overwrite the original .exe or save it as a new file. I chose to save it as a new file so I could still have the unmodified original should anything go wrong with the modified version.

## **USING THE MODIFIED PPS**

Open the modified version of the Minitor V PPS, and either read from a pager or open a saved codeplug. Once you have a codeplug loaded into the PPS, go to Operation > Engineer Logon. The following dialog box should open if you correctly entered the new menu items:



The dialog box will ask you to enter a password, and that password is: Taipei (case-sensitive). (You will notice in my version I further modified it to show the password in case I forgot it or someone else was to use the PPS and didn't know the password.)

Now that you have logged into the PPS, go to View > Engineer Data. The following dialog box should then

appear:

This is where you can change your Minitor V's core settings (i.e. Radio Band (LOW, VHF, UHF), Band Split, Number of Frequencies).

I would not advise changing anything other than what I mentioned unless you know what it does. Blindly changing parameters could lead to undesirable results.

(If for some reason your pager has a Stored Voice button on top of your function selector switch and it is NOT enabled, you can change the Modulation option to '9 - SV' to enable Stored Voice.)

I would also not advise clicking the 'Advanced' button unless you know exactly what you are doing.

Once you have made the changes you needed to make, and depending on those changes, you will need go to View > User Data and modify any data in that dialog box (i.e. Channels, Frequencies, Switch Functions, etc.).

Then, when you are finished editing your codeplug, save or write it to a pager like you normally would.

If you have any questions regarding the Engineering Mode modification of the Minitor V PPS, please reply in this thread.