



# IMPRES™ Battery Reader



The industry exclusive IMPRES Battery Reader provides IMPRES battery users the ability to access charging, reconditioning and key usage data that can affect overall battery performance. By keeping batteries in peak condition, talk time and cycle life are optimized, reducing battery replacement.

- Utilize the benefits of Motorola exclusive IMPRES technology by downloading key usage data from your IMPRES batteries
- Get clear and quick insight into the status of your battery
  - Current, Initial and Advertised capacity provides a quick view of the battery's ability to hold a charge
  - Battery Manufactured Date and Date of First Use provides accurate insight into the age of the battery
  - Total Charge Cycles gives insight into the battery's overall use
  - Total Recondition Cycles gives an additional performance indication
  - Total Estimated non-IMPRES Charge Cycles helps track warranty claims and provides additional insight into potential battery problems
- Recommendation box helps to quickly identify actions to optimize battery life
- Histograms help quickly identify the appropriate battery capacity to meet your needs. *(See Figure 2, Histogram)*
- Export the data easily to Excel for archiving and easy future access
- Installs quickly and easily. Simply attach the Reader to a PC via the USB port. No additional power required.
- Supports all IMPRES batteries

## Battery Reader Standard Package (NNTN7392A):

IMPRES Battery Reader\*\*  
 USB cord  
 APX adapter insert  
 HT/Professional Series adapter insert  
 MOTOTRBO adapter insert  
 System Software CD

\*PC not included

\*\*Standard Battery Reader fits all XTS, Sabre and HT1000 IMPRES batteries. Adapters are needed for all other IMPRES batteries

## IMPRES Battery Reader General Diagnostic Screen

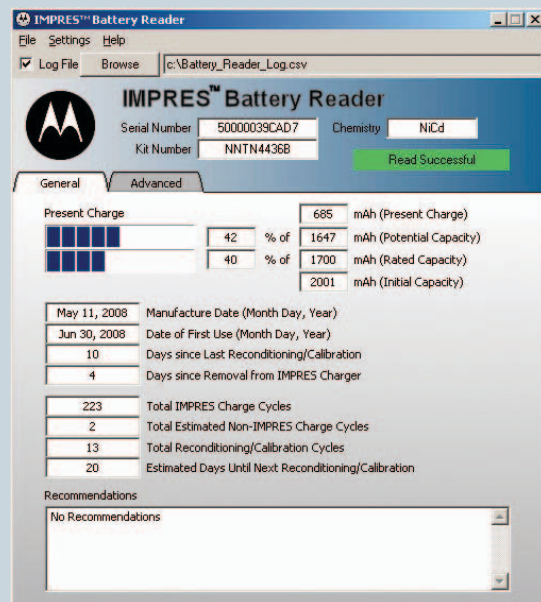


Figure 1

### Features and Benefits:

Offers detailed Battery Capacity information:

- Current Charge Capacity
- Potential – maximum charge the battery is currently capable of holding
- Rated – Motorola published minimum rated capacity
- Initial – capacity the first time the battery was charged

Offers detailed battery usage information:

- Date battery was manufactured and date of first use
- Number of times battery was charged and reconditioned

## IMPRES Battery Reader Advanced Diagnostic Screen

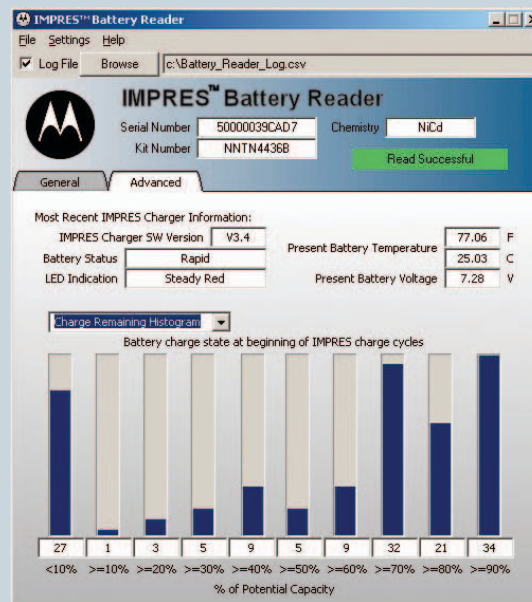


Figure 2

### Feature and Benefits:

Provides historical battery usage data:

- View battery charge remaining when the battery was placed back into the charger
  - For example – the battery being analyzed was placed into a charger 32 times when its charge remaining was between 70-80% of rated capacity
- Capability to toggle between views:
  - Battery charge remaining
  - Battery charge added



## Magnum Electronics, Inc

927 Horsepond Road  
Dover, DE 19901  
302-734-9250  
302-734-1056  
main@magnumelectronics.com  
[www.magnumelectronics.com](http://www.magnumelectronics.com)



**MOTOROLA**  
SOLUTIONS

Radio Solutions Channel Partner

All features, functionality and other product specifications are subject to change without notice or obligation. No warranty or guarantee expressed or implied is made regarding the capacity, performance or suitability of any product.

MOTOROLA and the Stylized M Logo are registered in the U.S. Patent and Trademark Office. All other product or service names are the property of their respective owners. © Motorola, Inc. 2009. All rights reserved.  
09-09  
G3-38-100