

PROGRAMMING SOFTWARE

CS-F3400D
CS-F3400D RR
CS-F3400D Traditional Chinese
CS-F3400DP
CS-F3400DP #12

Thank you for choosing this Icom product. **READ ALL INSTRUCTIONS** carefully and completely before using this product.

■ System requirements

The following system is required to use the programming software.

Operating System (OS)

- Microsoft Windows 8.1 (32/64bit)
- Microsoft Windows 10 (32/64bit)
- ① Except for Windows on ARM, such as Windows RT.

Others

- Programming cable and a USB port
 - OPC-2338 or OPC-2338-1
(for the Portable type transceivers, Option)
 - or
 - OPC-2363 or OPC-2363-1
(for the Mobile type transceivers, Option)
 - A USB 1.1 or 2.0 port
- USB cable (A or C - micro B type) and a USB port
 - USB cable (A or C - micro B type) (User supplied)
 - A USB 1.1 or 2.0 port
- microSD card and a memory card reader or memory card slot
 - microSD card (User supplied)
 - Card drive or Memory card slot to read the microSD card, if needed. (User supplied)
- PC with Bluetooth
(For only the transceiver with the Bluetooth function)

NOTE: Before connecting the cables described above, you must install the proper device driver to your PC.

■ Usable microSD card

The microSD or microSDHC card is not supplied by Icom. User supplied.

You can use a microSDHC of up to 32 GB. Icom has checked the compatibility with the following microSDHC cards.

(As of March 2022)

Brand	Type	Memory size
SanDisk®	microSDHC	4 GB
		8 GB
		16 GB
		32 GB

① The above list does not guarantee the card's performance.

① Through the rest of this document, a microSDHC card is simply called microSD card or the card.

■ How to set up

There are four ways to set up the transceivers using the programming software.

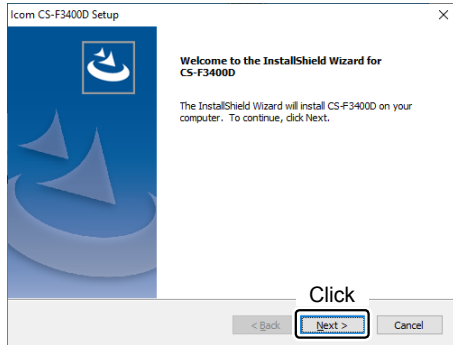
1. Setting up from a PC using an optional programming cable (pp. 3 ~ 4)
2. Setting up from a PC using a USB cable (pp. 5 ~ 6)
3. Setting up from a PC using a microSD card (pp. 7 ~ 9)
4. Setting up from a PC with Bluetooth
(For only the transceiver with the Bluetooth function, pp. 10 ~ 14)

① You can set up the transceiver using the data from another transceiver and the optional OPC-1870 or OPC-2362 ZONE COPY CABLE. See the Operating Guide for details.

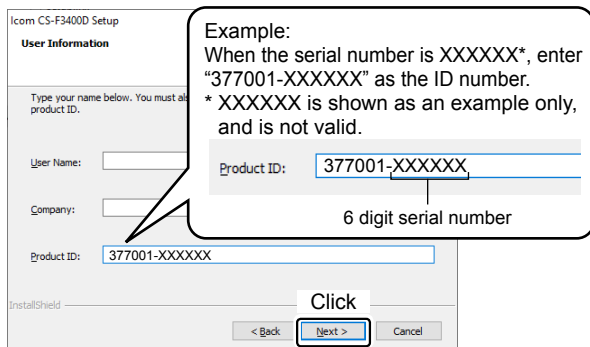
■ Software installation

When installing the software, confirm Windows has completed its startup, and then sign in as the **administrator**. These instructions are based on using CS-F3400D on Microsoft Windows 10 as an example.

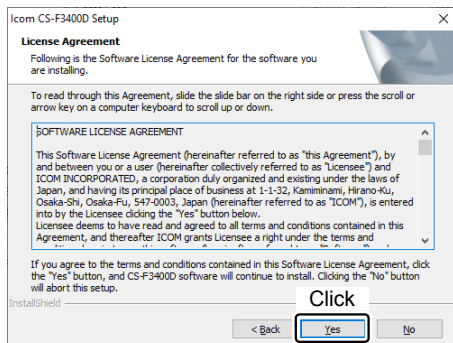
1. Confirm no other applications are running.
2. Double-click “setup.exe.”
 - If “User Account Control” is displayed, click <Yes> to continue.
3. “Welcome to the InstallShield Wizard for CS-F3400D” is displayed. Click <Next>.



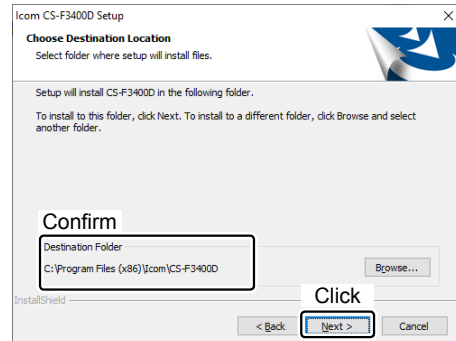
4. “User Information” is displayed. Enter your name, your company name (option), and the product ID number, as described below. Click <Next >.
- Product ID number:
 - CS-F3400D:** 377001-(6 digit serial number)
 - CS-F3400D RR:** 377011-(6 digit serial number)
 - CS-F3400D Traditional Chinese:** 377012-(6 digit serial number)
 - CS-F3400DP:** 393911-(6 digit serial number)
 - CS-F3400DP #12** 393912-(6 digit serial number)
- If you downloaded the software, enter the ID provided by your distributor.



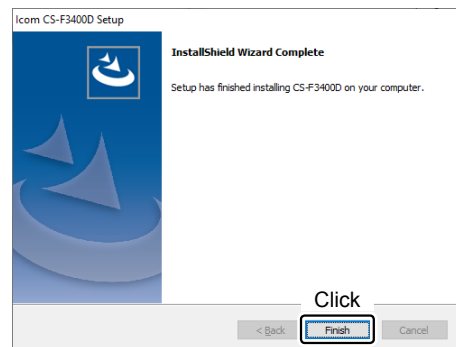
5. “Software License Agreement” is displayed. Read carefully, and if you agree to the terms and conditions, click <Yes>.



6. “Choose Destination Location” is displayed. Click <Next>.
- If desired, click <Browse...> to select another destination folder before clicking <Next >.



7. After the installation has completed, “InstallShield Wizard Complete” is displayed. Click <Finish>.



8. A ‘CS-F3400D,’ ‘CS-F3400D RR,’ ‘CS-F3400D Traditional Chinese,’ ‘CS-F3400DP,’ or ‘CS-F3400DP #12’ group is created on the menu, and a shortcut icon is created on the desktop.

NOTE: You can uninstall the software using the “Apps & features” in the “Settings” menu. To get started, click on Start > Settings > Apps > Apps & features.

Setting up from a PC using an optional programming cable

To setup from a PC using an optional programming cable, follow the steps below.

- Step 1** Install the USB driver.
- Step 2** Connect the transceiver and PC using the cable.
- Step 3** Setup. (p. 4)

■ Before connecting the cables to the PC

To use the programming cable, you must first install a USB driver.

The latest USB driver and installation guide can be downloaded from the Icom website.

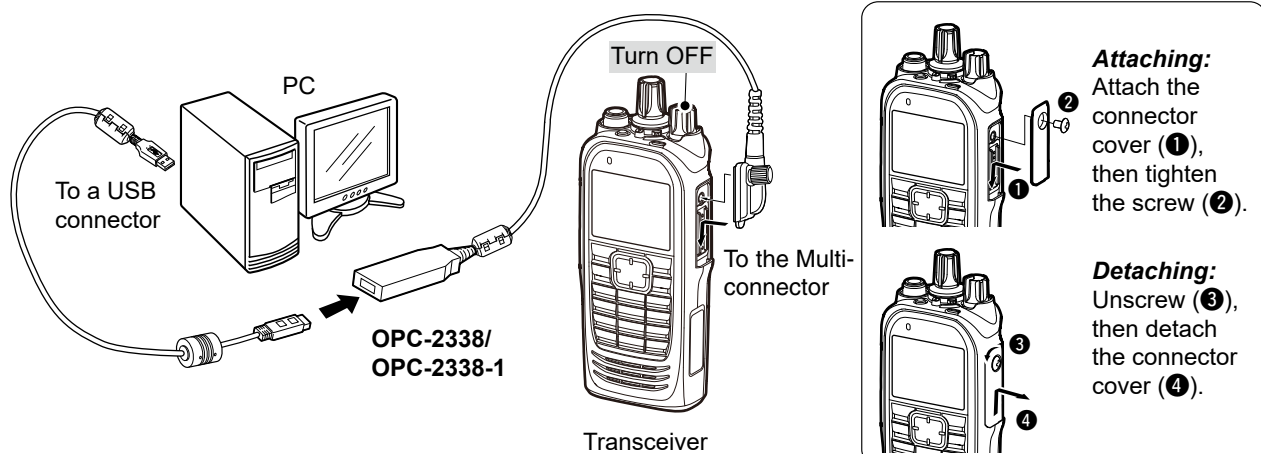
(<https://www.icomjapan.com/support/>).

Read the guide carefully before installing the driver.

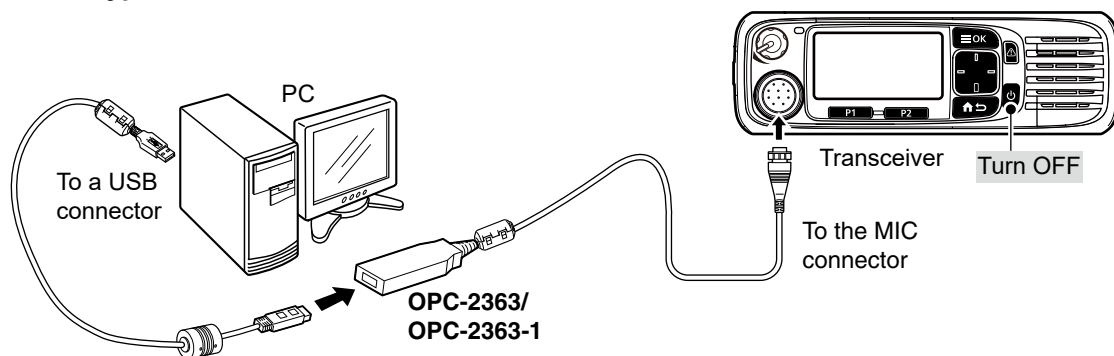
■ Connecting the cables

1. Be sure the transceiver is OFF.
2. Connect the cables, as shown below.
3. Turn ON the transceiver.


● Portable types



● Mobile types



■ Entering information

- To prevent data loss, read all the transceiver's data before entering or editing parameters using the software, even if the transceiver is factory fresh. Click , or <Program> in the top menu of the software, and then select "Read ← TR" to start reading.
- While reading or writing the entered data, **NEVER** turn OFF the transceiver or the PC, and **NEVER** disconnect the cables. Otherwise, the data could be lost or corrupted.
- Before reading or entering data, make a backup file on your PC.
A backup file enables you to easily restore if the data in the transceiver is accidentally deleted.


NOTE: When the transceiver's model type does not match the software's type, a warning dialog is displayed before writing to the transceiver, even though, entering and editing can be done.



TIP: Refer to the software's Help file for assistance with the functions or settings.
To open the Help file, click <Help> in the top menu of the software and select "Contents," or simply push the [F1] key on the PC's keyboard.

■ Setting up

To setup using the cable, follow the procedure below.

Procedure:

1. Click , or select "Read ← TR" in the <Program> menu to start reading the data from the transceiver.

TIP: If you have an ICF file to write to the transceiver, click , or select "Open Ctrl+O" in the <File> menu, and then select the file.
2. Enter the settings for each function, using the programming software.
① See the Help file of the programming software for assistance.
3. Click , or select "Write → TR" in the <Program> menu to write the entered data into your transceiver.
• The entered data will overwrite the current data.
4. After the writing is completed, the transceiver automatically restarts.
① The user can operate the transceiver with the loaded data.

TIP: For only the Portable types

When the following item is set to other than "OFF," the transceiver does not enter the Programming mode, and the setup cannot be done. In that case, you can forcibly make the transceiver enter the Programming mode by doing the following steps.

- Common > External I/O > Option > Multi-Connector/D-Sub 25pin > **Mode**
- Common > External I/O > Option > USB Setting > **Serial Mode**
- Supplemental Function > Bluetooth Setting > Data Device > **Serial Mode**

For the Ten-key and the Simple key types

1. Turn OFF the transceiver.
2. While holding down [P1], turn ON the transceiver. Continue holding down [P1] for about 3 seconds.

For the Non-display types

1. Turn OFF the transceiver.
2. While holding down [F2] and [F3], turn ON the transceiver. Continue holding down [F2] and [F3] for about 3 seconds.

Setting up from a PC using a USB cable

To setup from a PC using a USB cable, follow the steps below.

Step 1 Install the USB driver.

Step 2 Connect the transceiver and PC using the cable.

Step 3 Setup. (p. 6)

NOTE: Before reading or writing programming data, set the “USB Mode Select” item to “Data Transfer.”
(Menu > Function > **USB Mode Select**)

■ Before connecting the cable to the PC

To use a USB cable, you must first install a USB driver.

The driver and the installation guide can be downloaded from the Icom extranet.

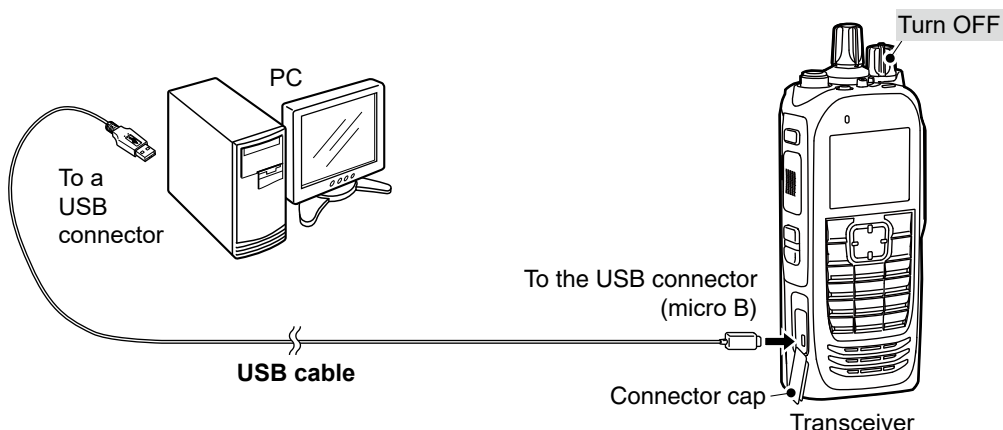
Read the guide carefully before installing the driver.

NOTE: The driver is not supported by the Windows automatic recognition system.

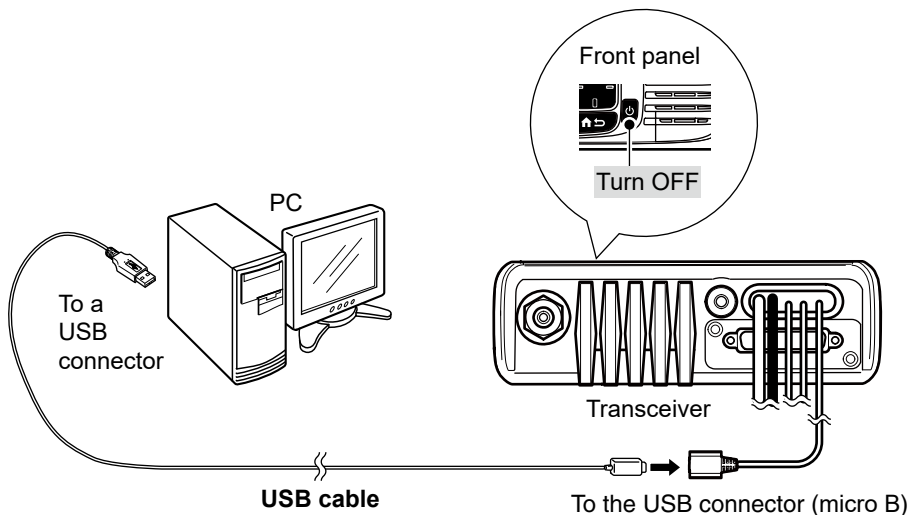
■ Connecting the cables

1. Be sure the transceiver is OFF.
2. Connect the cable, as shown below.
3. Turn ON the transceiver.


● Portable types



● Mobile types



■ Entering information

- To prevent data loss, read all the transceiver's data before entering or editing parameters using the software, even if the transceiver is factory fresh. Click , or <Program> in the top menu of the software, and then select "Read ← TR" to start reading.
- While reading or writing the entered data, **NEVER** turn OFF the transceiver or the PC, and **NEVER** disconnect the cables. Otherwise, the data could be lost or corrupted.
- Before reading or entering data, make a backup file on your PC.
A backup file enables you to easily restore if the data in the transceiver is accidentally deleted.

NOTE:


- Before reading or writing the entered data, set the "USB Mode Select" item to "Data Transfer."
(Menu > Function > **USB Mode Select**)
- When the transceiver's model type does not match the software's type, a warning dialog is displayed before writing to the transceiver, even though, entering and editing can be done.



TIP: Refer to the software's Help file for assistance with the functions or settings.
To open the Help file, click <Help> in the top menu of the software and select "Contents," or simply push the [F1] key on the PC's keyboard.

■ Setting up

To setup using the USB cable, follow the procedure below.

Procedure:

1. Click , or select "Read ← TR" in the <Program> menu to start reading the data from the transceiver.

TIP: If you have an ICF file to write to the transceiver, click , or select "Open Ctrl+O" in the <File> menu, then select the file.
2. Enter the settings for each function, using the programming software.
① See the Help file of the programming software for assistance.
3. Click , or select "Write → TR" in the <Program> menu to write the entered data into your transceiver.
• The entered data will overwrite the current data.
4. After the writing is completed, the transceiver automatically restarts.
① The user can operate the transceiver with the loaded data.

TIP: When the following item is set to other than "OFF," the transceiver does not enter the Programming mode, and the setup cannot be done. In that case, you can forcibly make the transceiver enter the Programming mode by doing the following steps.

- Common > External I/O > Option > Multi-Connector/D-Sub 25pin > **Mode**
- Common > External I/O > Option > USB Setting > **Serial Mode**
- Supplemental Function > Bluetooth Setting > Data Device > **Serial Mode**

Portable: For the Ten-key and the Simple key types

Mobile: For the LCD types

1. Turn OFF the transceiver.
2. While holding down [P1], turn ON the transceiver. Continue holding down [P1] for about 3 seconds.

Portable: For the Non-display types

1. Turn OFF the transceiver.
2. While holding down [F2] and [F3], turn ON the transceiver. Continue holding down [F2] and [F3] for about 3 seconds.

Mobile: For the Segment types

1. Turn OFF the transceiver.
2. While holding down [F1], turn ON the transceiver. Continue holding down [F1] for about 3 seconds.

Setting up from a PC using a microSD card

To setup from a PC using a microSD card, follow the steps below.

- Step 1** Save the entered data in a data file (ICF file) using the programming software. (p. 7)
- Step 2** Copy the ICF file onto the microSD card on your PC. (p. 8)
- Step 3** Insert the card that includes the ICF file into the slot of the transceiver. (p. 9)
- Step 4** Load. (p. 9)

NOTE:

- Before reading or writing the entered data, set the “USB Mode Select” item to “Data Transfer.” (Menu > Function > **USB Mode Select**)
- If you use a brand new microSD card, first format the card.
See section 9 of the transceiver’s Operating Guide for details.

■ Entering information


- To prevent data loss, copy the settings data (ICF file) on the card to the PC. After copying, read the data into the programming software, before editing or entering new software parameters.
- Before loading, make a backup file on your PC. A backup file enables you to easily restore if the data in the microSD card is accidentally deleted.
- Be sure to turn OFF the transceiver before inserting or removing the microSD card.
- While loading, **NEVER** remove the microSD card, **NEVER** turn OFF the transceiver or the PC, and **NEVER** disconnect the DC power cable or battery pack. Otherwise, the data could be lost or corrupted.

TIP: Refer to the software’s Help file for assistance with the functions or settings.
To open the Help file, click <Help> in the top menu of the software and select “Contents,” or simply push the [F1] key on the PC’s keyboard.

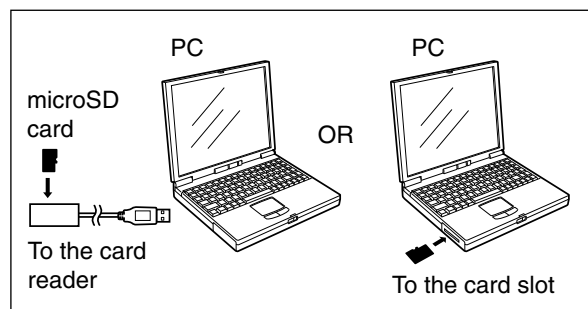
■ Setting up

To setup using the microSD card, follow the procedure below.

Procedure:

1. Enter the settings for each item, using the programming software.
① See the Help file of the programming software for assistance.
2. Click , or select “Save” or “Save As...” in the <File> menu to save the entered data in a data file (ICF file).
3. Insert the microSD card into the card drive or a memory card reader* on your PC, as shown below.

*User supplied.



► Continued on the next page.

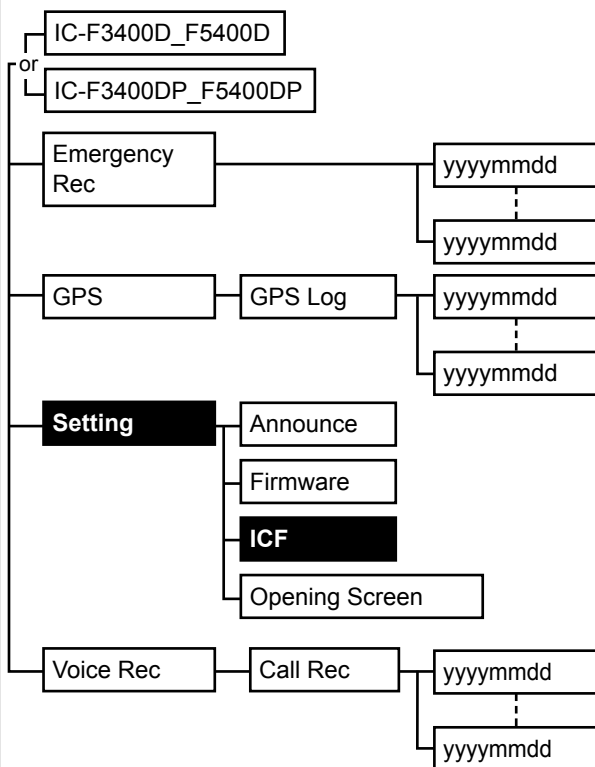
■ Setting up (Continued)

4. Copy the ICF file into the [ICF] folder on the microSD card.

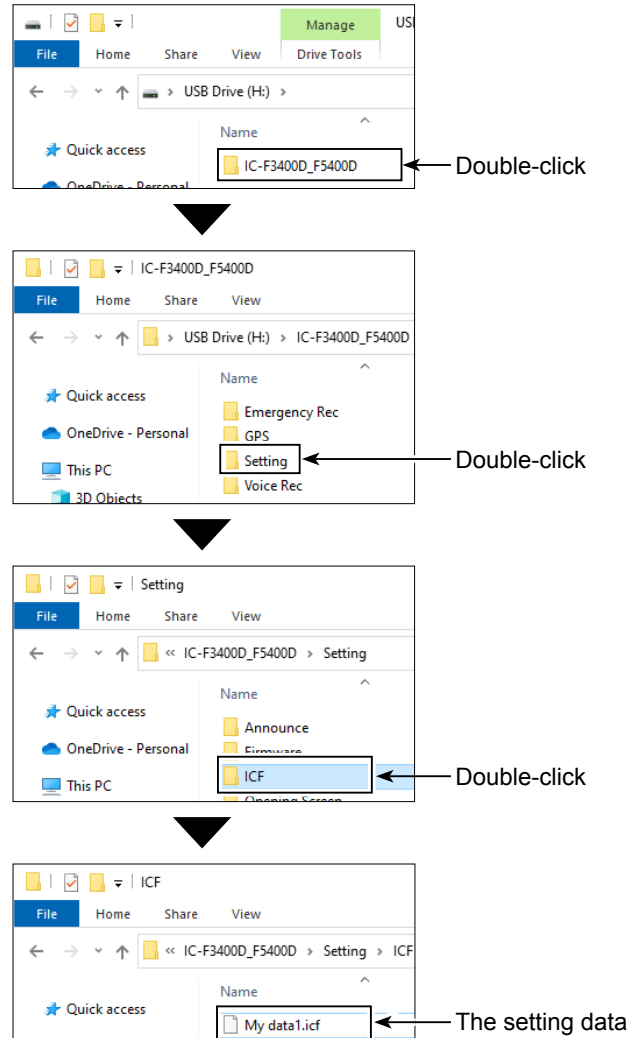
- **CS-F3400D:**
[IC-F3400D_F5400D] > [Setting] > [ICF]
- **CS-F3400D RR:**
[IC-F3400D_F5400D] > [Setting] > [ICF]
- **CS-F3400D Traditional Chinese:**
[IC-F3400D_F5400D] > [Setting] > [ICF]
- **CS-F3400DP:**
[IC-F3400DP_F5400DP] > [Setting] > [ICF]
- **CS-F3400DP #12:**
[IC-F3400DP_F5400DP] > [Setting] > [ICF]

TIP: About the microSD card's folder composition

The folder composition on the microSD card is shown below.
Copy the ICF file into the [ICF] folder on the microSD card.



Copying the ICF file in the PC into the [ICF] folder on the microSD card.
(Example: CS-F3400D)



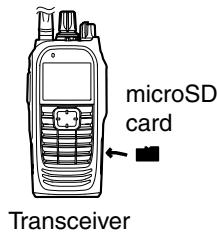
► Continued on the next page.

■ Setting up (Continued)

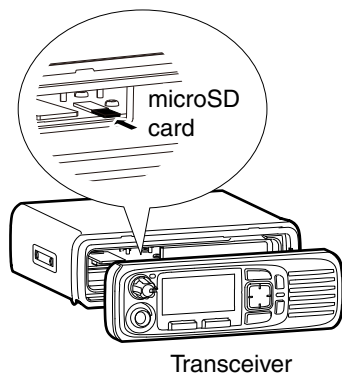
5. Remove the card from the card drive or a memory card reader on your PC.
6. Insert the card that includes the ICF file into the slot of the transceiver as shown below.

NOTE: Be sure to turn OFF the transceiver before inserting the card.

● Portable types



● Mobile types

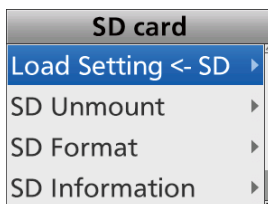


12. Push [Left] or [Right] to select <Yes>, then push [OK] to start to load the ICF file.
 - The contents of the ICF file will overwrite the current data.

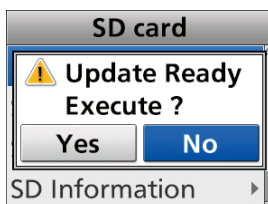
CAUTION: While loading, **DO NOT** remove the microSD card, **DO NOT** turn OFF the transceiver, and **DO NOT** disconnect the DC power cable or battery pack. Otherwise, the data could be lost or corrupted.

13. After loading, the transceiver automatically restarts.
 - ① The user can operate the transceiver with the loaded data.

7. Turn ON the transceiver.
8. Push [Menu] on the transceiver to display the “Menu” screen.
9. Push [Left] or [Right] to select “SD card,” then push [OK].
10. Push [Up] or [Down] to select “Load Setting <-SD,” then push [OK].



11. “Update Ready Execute?” is displayed.

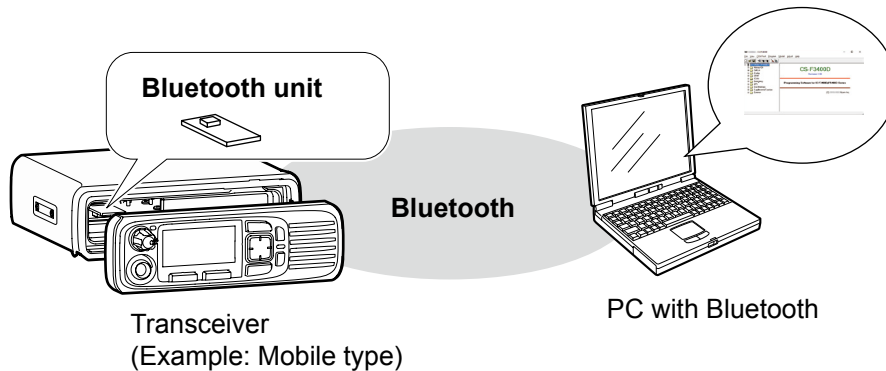


Setting up from a PC with Bluetooth® (For only the transceiver with the Bluetooth function)

To setup from a PC with Bluetooth, follow the steps below.

Step 1 Pairing with a PC with Bluetooth

Step 2 Setup. (p. 14)



■ Pairing with a PC with Bluetooth®

Portable: For the Ten-key and the Simple key types

Mobile: For the LCD types

Step 1: Entering the Pairing mode (PC)

① See the PC's instruction manual for details.

Step 2: Searching for the PC (Transceiver)

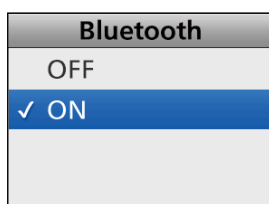
1. Turn ON the transceiver.
2. Push [Menu] to display the "Menu" screen.
3. Push [Left] or [Right] to select "Bluetooth," then push [OK].



4. Push [Up] or [Down] to select "Bluetooth," then push [OK].



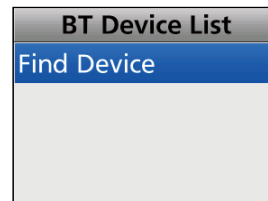
5. Push [Up] or [Down] to select "ON," then push [OK].
 - The Bluetooth function is turned ON.



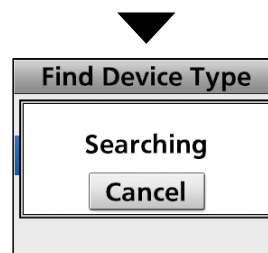
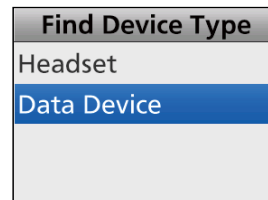
6. Push [Up] or [Down] to select "BT Device List," then push [OK].



7. Push [Up] or [Down] to select "Find Device," then push [OK].
 - If the transceiver has been connected to the PC before, the PC name may be displayed.



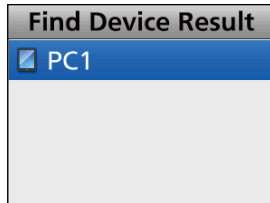
8. Push [Up] or [Down] to select "Data Device," then push [OK] to start searching.



► Continued on the next page.

■ Pairing with a PC with Bluetooth® (Continued)

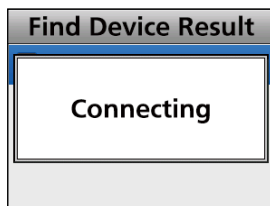
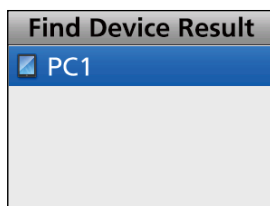
9. Displays the usable devices.



Step 3: Connecting to the PC (Transceiver)

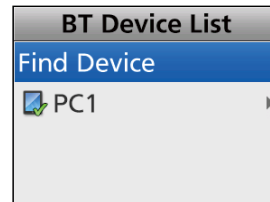
Push [Up] or [Down] to select the PC to connect, then push [OK].

- Connects to the PC.



Step 5: Connection (Transceiver)

1. After the transceiver and the PC connection has succeeded, "✓" is displayed beside the device icon.



2. Push [Back] several times until you return to the standby screen.
 - While connected to a Bluetooth device, "Bluetooth" is displayed instead of "BT".

Step 4: Setting the Bluetooth Serial Port (PC)

When the Serial Port Access Authorization dialog such as below is displayed on the PC screen, accept it.

- ① The content may differ, depending on the PC.
- ① See the PC's instruction manual for details.



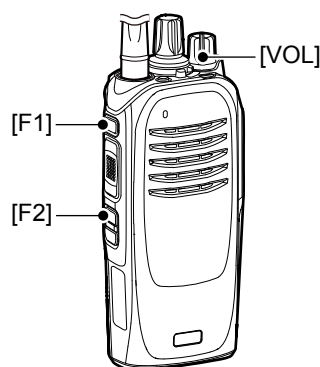
(Example)

■ Pairing with a PC with Bluetooth® (Continued)

Portable: For the Non-display types

Step 1: Entering the Bluetooth Set mode **(Transceiver)**

1. Turn OFF the transceiver.
2. Set [Selector] to any channel other than Channel 16.
3. While holding down [F1], turn ON the transceiver. Continue holding down [F1] for about 3 seconds.
 - 2 beeps sound.
 - The transceiver enters the Bluetooth Set mode.



Step 2: Entering the Pairing mode **(PC)**

① See the PC's instruction manual for details.

Step 3: Turning ON the Bluetooth function **(Transceiver)**

After the PC has entered the Pairing mode, push [F2] to turn ON the Bluetooth function.

- The transceiver automatically enters the Pairing mode, and begins searching for a Bluetooth headset.
- While searching, the status indicator quickly blinks blue.

① If the status indicator does not blink after pushing [F2], the transceiver has not entered the Bluetooth Set mode. In that case, do Step 1 again.

Step 4: Pairing with a headset **(Transceiver)**

When a headset is found, the transceiver pairs with it.

- After the transceiver and the headset pairing has succeeded, the Status indicator slowly blinks blue 3 times. In that case, the connection to the headset has also succeeded.

① The transceiver searches for a headset first. After searching for a headset, the transceiver will start searching for a PC.

Step 5: Pairing with a PC **(Transceiver)**

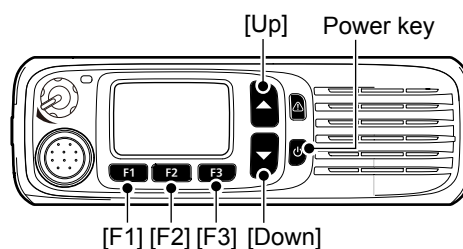
1. When a PC is found, the transceiver pairs with it.
 - After the transceiver and the PC pairing has succeeded, the Status indicator slowly blinks blue 3 times. In that case, connection to the PC has also succeeded.
 - ① If the Bluetooth connection fails, the Status indicator slowly blinks red 3 times. To search for a PC again, push [F3] to turn OFF the Bluetooth function, then push [F2] to turn it ON again.
2. Turn OFF the transceiver, then turn it ON again to exit the Bluetooth Set mode.

■ Pairing with a PC with Bluetooth® (Continued)

Mobile: For the Segment types

Step 1: Entering the Bluetooth Set mode (Transceiver)

1. Turn OFF the transceiver.
2. While holding down [F2] and [F3], turn ON the transceiver. Continue holding down [F2] and [F3] for about 3 seconds.
 - 2 beeps sound.



Step 2: Entering the Pairing mode (PC)

- ① See the PC's instruction manual for details.

Step 3: Turning ON the Bluetooth function (Transceiver)

1. After the PC has entered the Pairing mode, hold down [F1] for 1 second to enter the Set mode.
 2. Push [F2] or [F3] to select "b0."
 3. Push [Up] to turn ON the Bluetooth function.
 - The transceiver automatically enters the Pairing mode, and begins searching for a Bluetooth headset.
 - While searching, the status indicator quickly blinks blue.
- ① If the status indicator does not blink after pushing [Up], the transceiver has not entered the Bluetooth Set mode. In that case, do Steps 1 and 3 again.

Step 4: Pairing with a headset (Transceiver)


When a headset is found, the transceiver pairs with it.

- After the transceiver and the headset pairing has succeeded, the Status indicator slowly blinks blue 3 times. In that case, the connection to the headset has also succeeded.
- ① The transceiver searches for a headset first. After searching for a headset, the transceiver will start searching for a PC.

Step 5: Pairing with a PC (Transceiver)

1. When a PC is found, the transceiver pairs with it.
 - After the transceiver and the PC pairing has succeeded, the Status indicator slowly blinks blue 3 times. In that case, connection to the PC has also succeeded.
- ① If the Bluetooth connection fails, the Status indicator slowly blinks red 3 times. To search for a PC again, push [Down] to turn OFF the Bluetooth function, then push [Up] to turn it ON again.
2. Hold down [F1] for 1 second to exit the Set mode.
3. Turn OFF the transceiver, then turn it ON again to normally operate the transceiver.

■ Entering information

- To prevent data loss, read all the transceiver's data before entering or editing parameters using the software, even if the transceiver is factory fresh. Click , or <Program> in the top menu of the software, and then select "Read ← TR" to start reading.
- While reading or writing the entered data, **NEVER** turn OFF the transceiver or the PC. Otherwise, the data could be lost or corrupted.
- Before reading or entering data, make a backup file on your PC.
A backup file enables you to easily restore if the data in the transceiver is accidentally deleted.




NOTE: When the transceiver's model type does not match the software's type, a warning dialog is displayed before writing to the transceiver, even though, entering and editing can be done.

TIP: Refer to the software's Help file for assistance with the functions or settings.
To open the Help file, click <Help> in the top menu of the software and select "Contents," or simply push the [F1] key on the PC's keyboard.

■ Setting up

To setup using a PC with Bluetooth, follow the procedure below.

Procedure:

1. Click , or select "Read ← TR" in the <Program> menu to start reading the data from the transceiver.
TIP: If you have an ICF file to write to the transceiver, click , or select "Open Ctrl+O" in the <File> menu, and then select the file.
2. Program the settings for each function, using the programming software.
① See the Help file of the programming software for assistance.
3. Click , or select "Write → TR" in the <Program> menu to write the programmed data into your transceiver.
• The entered data will overwrite the current data.
4. After the writing is completed, the transceiver automatically restarts.
① The user can operate the transceiver with the loaded data.

TIP: When the following item is set to other than "OFF," the transceiver does not enter the Programming mode, and the setup cannot be done. In that case, you can forcibly make the transceiver enter the Programming mode by doing the following steps.

- Common > External I/O > Option > Multi-Connector/D-Sub 25pin > **Mode**
- Common > External I/O > Option > USB Setting > **Serial Mode**
- Supplemental Function > Bluetooth Setting > Data Device > **Serial Mode**

Portable: For the Ten-key and the Simple key types

Mobile: For the LCD types

1. Turn OFF the transceiver.
2. While holding down [P1], turn ON the transceiver. Continue holding down [P1] for about 3 seconds.

Portable: For the Non-display types

1. Turn OFF the transceiver.
2. While holding down [F2] and [F3], turn ON the transceiver. Continue holding down [F2] and [F3] for about 3 seconds.

Mobile: For the Segment types

1. Turn OFF the transceiver.
2. While holding down [F1], turn ON the transceiver. Continue holding down [F1] for about 3 seconds.