

■ Getting started

- ◇ This cloning software is designed to perform data setting and cloning for the IC-F7000 HF TRANSCEIVER.
- ◇ **HELP WINDOW:** A help window describes the function and operation of each items.

■ System requirements

To use this program, the following hardware and software are required:

- Microsoft® Windows® 95/98/Me/2000/XP
- USB or RS-232C serial port
- OPC-592 + OPC-478/U CLONING CABLE (Adapter cable + Cloning cable)

NOTE: When using the OPC-478U, USB type cloning cable, USB driver installation is necessary. The driver is supplied with the OPC-478U. See the OPC-478U instruction manual for the installation details.

NOTE: Depending on your Windows system files, the PC may require rebooting. In this case, repeat the installation from the beginning.

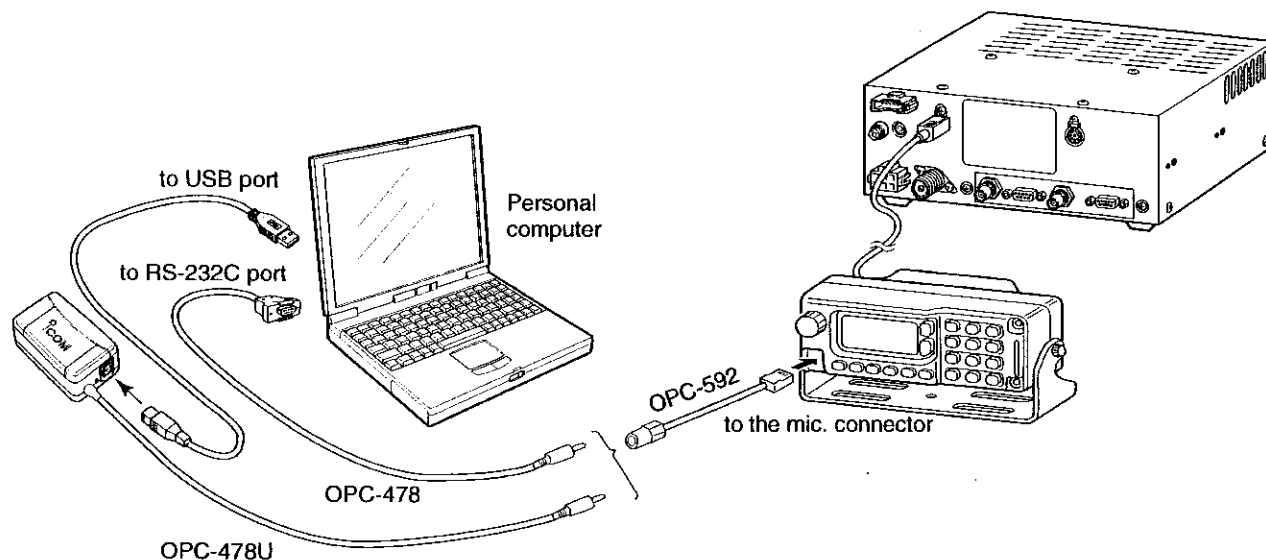
■ Software installation

◇ Installation

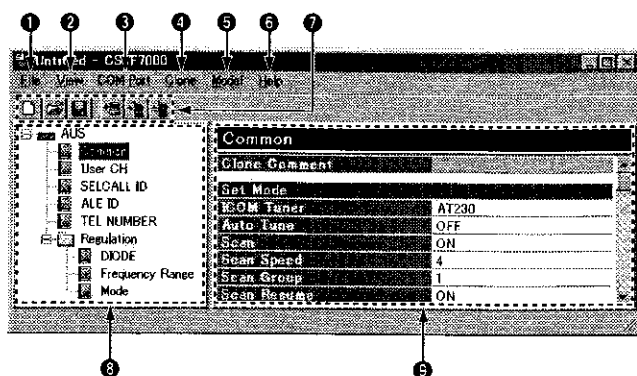
- ① Boot up Windows.
 - Quit all applications when Windows is running.
- ② Insert the disk into the appropriate CD drive.
- ③ Select 'Run' from the [Start] menu.
- ④ Type the setup program name with full path name, then press the [Enter] key. (e.g. D:\setup [Enter])
- ⑤ Follow the prompts.
- ⑥ Enter the product ID number in the following manner.
 - ID number: 271201 - (6 digit Serial number)
 - e.g. the Serial number on the CD is 000001, enter "271201-000001" as the ID number.
- ⑦ Program group 'CS-F7000' appears in the 'Programs' folder of the start menu.

■ Connections

- /// All cloning operations are performed from the computer's keyboard—the operation required on the transceiver side is:
- /// Pushing the power switch to turn power ON.



■ Screen description



① FILE MENU [File]

Used for saving User channel contents, printing the pre-programmed information or exiting the program, etc.

② VIEW MENU [View]

- Displayed Font Size is selectable.
- Turn the toolbar indication ON or OFF.

③ COM PORT MENU [COM Port]

Click to display the COM port (1 to 4 and More) setting dialog box.

- Set the COM port number properly.

/// **NOTE:** 'Check the following' dialog box appears when the COM port is not set correctly.

④ CLONING MENU [Clone]

Click to display cloning menu and cloning information dialog box.

⑤ MODEL MENU [Model]

Click to display the model type selection dialog box.

⑥ HELP MENU [Help]

Click to display the help contents and cloning software revision information.

⑦ TOOLBAR

Short cut keys appear on the tool bar when clicking the toolbar function in the [View] menu.

⑧ TREE VIEW MENU

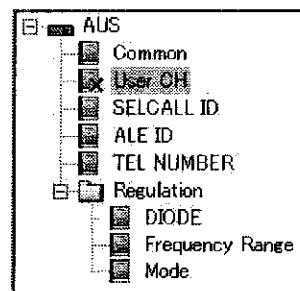
Select the item that you want to edit.

⑨ PROGRAM SCREEN

Displays the channel or editable item information.

■ Before starting the programming

- Read all the transceiver cloning data into the PC before editing with the software. Otherwise the cloning data may not be cloned properly to your transceiver.
- 'X' appearing on the folder or at the end of the frequency means the wrong data is edited or the appropriate data is not entered yet. In such a case, please edit the appropriate data in the item.



Tree view screen

■ Common

Set commonly used Clone Comment, and the condition of the Set Mode items such as ICOM Tuner, Auto Tune, Scan Speed, FSK Tone. Therefore SELCALL and ALE have own set mode items independently.

■ User CH

The 'User CH' window allows you to edit the channel information such as CH, RX/TX Freq (kHz), MODE and COMMENT.

/// **NOTE:** Edit the CH first, otherwise no setting can be done.

■ SELCALL ID

The 'SELCALL ID' window allows you to edit the Selcall ID information for NAME, ID and CH.

/// **NOTE:** Edit the ID first, otherwise no setting can be done.

■ ALE ID

The 'ALE ID' window allows you to edit the ALE ID information for ID, NET ID, CH and SLOT No.

/// **NOTE:** Edit the ID first, otherwise no setting can be done.

■ TEL NUMBER

The 'TEL NUMBER' window allows you to edit the TEL NUMBER information for NAME and NUMBER.

/// **NOTE:** Edit the NUMBER first, otherwise no setting can be done.

■ Regulation

◇ **DIODE** (Edit is restricted)

Set the Frequency Program (RX/TX, TX), Protected Set-mode, 28 MHz Power Limit and CB Band.

◇ **Frequency Range** (Edit is restricted)

Set the frequency edge (lower and higher) for each band.

◇ **Mode**

Select usable operating mode and condition (Disable, Enable RX only or Enable RX/TX.)

Icom, Icom Inc. and the ICOM logo are registered trademarks of Icom Incorporated (Japan) in the United States, the United Kingdom, Germany, France, Spain, Russia and/or other countries.
Microsoft and Windows are registered trademarks of Microsoft Corporation in the U.S.A. and other countries.

NOTE: The above instructions are for reference only. Please refer to the HELP file of the cloning software for the function or setting details.

Icom Inc.

1-1-32 Kamiminami, Hirano-ku, Osaka 547-0003, Japan

Count on us!

A-63211-1EX

Printed in Japan