

ICOM

INSTRUCTIONS

CLONING SOFTWARE

CS-F3020/F5020

■ Getting started

- ◆ This cloning software is designed to perform data setting and cloning for the IC-F3020/F4020 series VHF/UHF HANDHELD TRANSCEIVERS, or IC-F5020/F6020 series VHF/UHF MOBILE TRANSCEIVERS.
- ◆ **HELP WINDOW:** CS-F3020/F5020 has a help window to describe functions and operation.

■ System requirement

To use this program, the following hardware and software are required:

PC

- Microsoft® Windows® 2000/XP or Microsoft® Windows Vista™ is installed
- /// This instruction manual is described using Windows XP.
- With RS-232C serial port (D-sub 9-pin) or USB port

Other item

- For IC-F3020/F4020 series
Optional OPC-478 CLONING CABLE (RS-232C type)
Or optional OPC-478UC* CLONING CABLE (USB type)

- For IC-F5020/F6020 series
Optional OPC-1122 CLONING CABLE (RS-232C type)
Or optional OPC-1122U* CLONING CABLE (USB type)

NOTE:

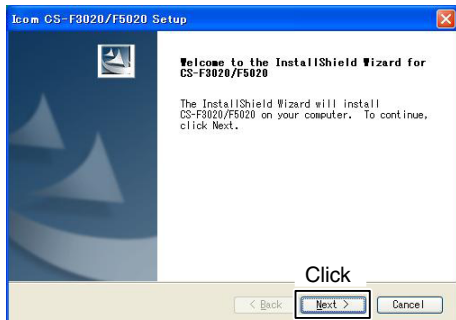
To use the OPC-478UC/1122U, USB type cloning cable, USB driver installation is necessary. The driver is supplied with the OPC-478UC/1122U. See the OPC-478UC/1122U instruction manual for the installation details.

*The USB driver, supplied with the OPC-478UC/1122U, is not supported for Microsoft® Windows Vista™ (64 bit).

■ Software installation

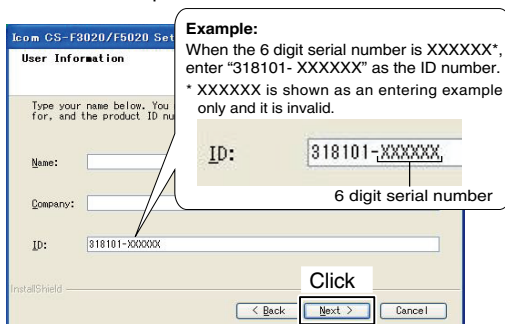
/// When installing the software, log in as the **administrator**.

- ① Make sure Windows is started and no other applications are running.
- ② Insert the CD into the CD drive.
- ③ Double-click the "setup.exe" contained in the CD.
- ④ The "Welcome to the InstallShield Wizard for CS-F3020/F5020" will appear as below. Click [Next>].

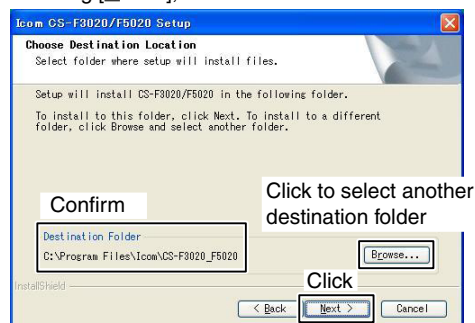


- ⑤ The "User Information" will appear as below, then type your name, your company name and the product ID number with the following manner. Then click [Next >].

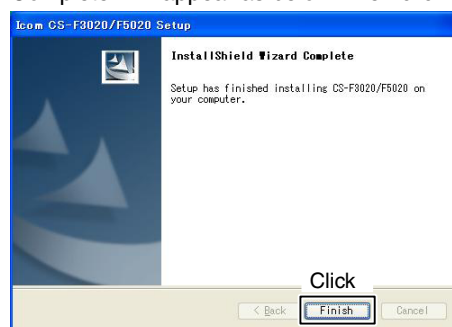
- ID number: 318101-(6 digit serial number)
/// Please check the serial number on the CD. If you have gotten the software by the download service, enter the ID which was provided from the distributor.



- ⑥ The "Choose Destination Location" will appear as below. Then click [Next>] to install the software to the destination folder. (e.g. C:\Program Files\Icom\CS-F3020_F5020)
 - Click [Browse...] to select another destination folder before clicking [Next >], if desired.



- ⑦ After the installation is completed, the "InstallShield Wizard Complete" will appear as below. Then click [Finish].



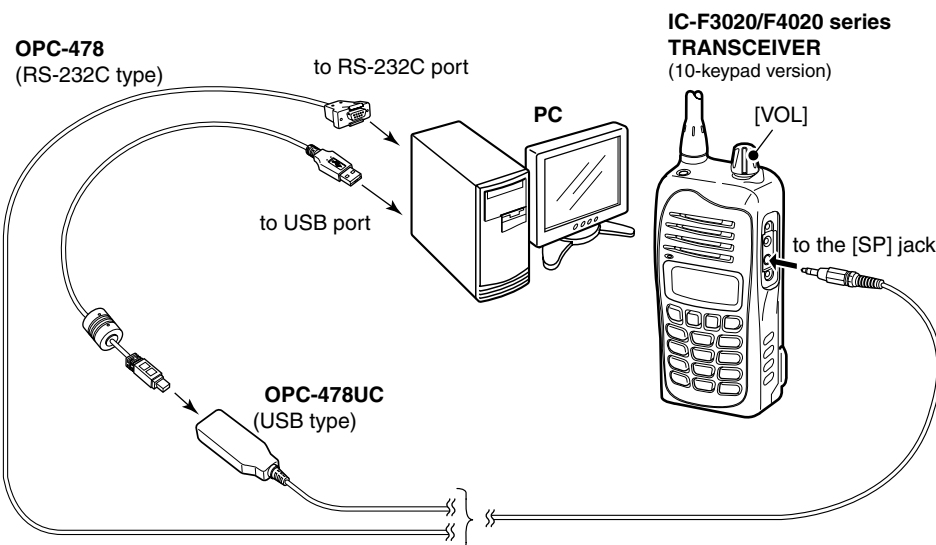
- ⑧ Eject the CD.
- ⑨ Program group 'CS-F3020_F5020' appears in the 'Programs' folder of the start menu, and 'CS-F3020_F5020' short cut icon appears on the desktop screen.
 - To uninstall the cloning software, select the "Control Panel" in the start menu, and click the "Add or Remove Programs." Then, select the program group 'Icom CS-F3020/5020' and click [Remove].

■ Connections

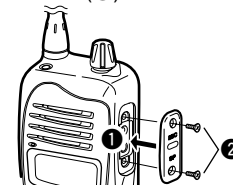
All cloning operations are performed from the computer's keyboard—the operation required on the transceiver side is;

For IC-F3020/F4020 series

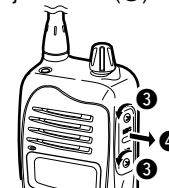
- ① First, connect the cloning cable as illustrated below.
- ② Then, rotate [VOL] to turn power ON.



Attaching:
Attach the jack cover (①), then tighten the screws (②).

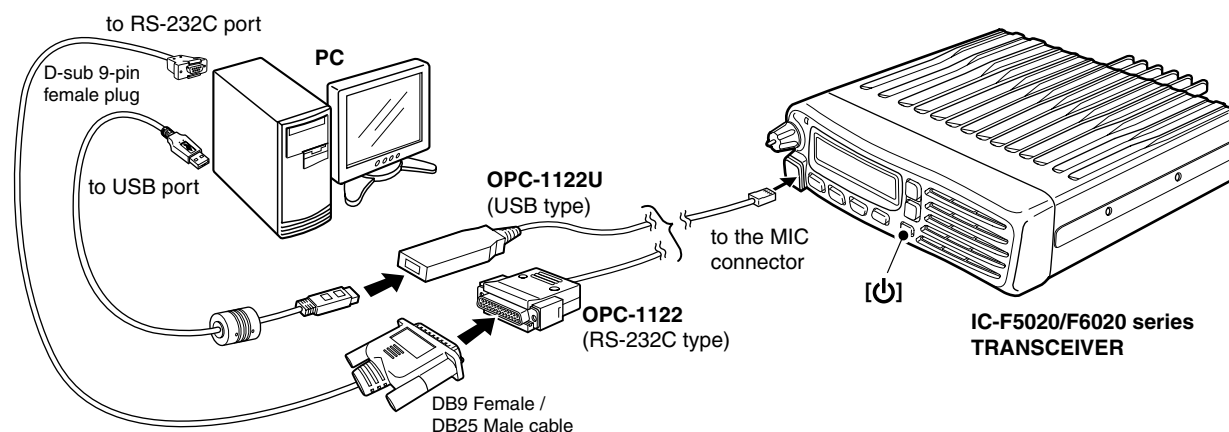


Detaching:
Unscrew the screws (③), then detach the jack cover (④).



For IC-F5020/F6020 series

- ① First, connect the cloning cable as illustrated below.
- ② And then push [P] to turn power ON.



■ Programming information

- We recommend that you should read out all the transceiver's data before start entering/editing parameters even when the transceiver is factory fresh.
- Right-click the desired cell and select [Edit... Enter] from the edit menu, or double-click the cell directly to select and change the setting depends on the item.
- Right-click the desired cell and select [Help] from the edit menu to open the help window for the item.

Edit...	Enter
Copy	Ctrl+C
Paste	Ctrl+V
Up	Ctrl+Up
Down	Ctrl+Down
Clear	
Delete	Del
Insert	Ins
Help	

(Edit menu)

Please refer to the help file of the cloning software when you don't understand the function or setting meaning. To open the help file, click "Help" in the top menu of the cloning software and select "Contents", or simply push the [F1] key of the computer's keyboard.

Icom, Icom Inc. and the Icom logo are registered trademarks of Icom Incorporated (Japan) in the United States, the United Kingdom, Germany, France, Spain, Russia and/or other countries. Microsoft, Windows and Windows Vista are either registered trademarks or trademarks of Microsoft Corporation in the United States and/or other countries. All other products or brands are registered trademarks or trademarks of their respective holders.

Icom Inc.

1-1-32 Kamiminami, Hirano-ku, Osaka 547-0003, Japan

Count on us!

A-6731W-1EX Printed in Japan
© 2009 Icom Inc.