



***DSL-100D/CZ  
PCI ADSL Modem  
Quick Install Guide***

*This guide is for installation only. For more detailed information regarding the product and its features, please refer to the user manual located on the included CD-Rom.*

### **Before you begin:**

1. *If you have had a service technician install your DSL Line, please skip to **Step 1 “Review Package Contents.”** If you are installing DSL yourself, please follow all instructions.*

## **1** Install a “Z-Blocker” phone filter at EACH telephone wall jack in your home.

Q: Why do I need these filters?

A: DSL service shares the line with your regular telephone service. In-line filters prevent these services from interfering with each other, improving both the telephone audio and DSL data rate.

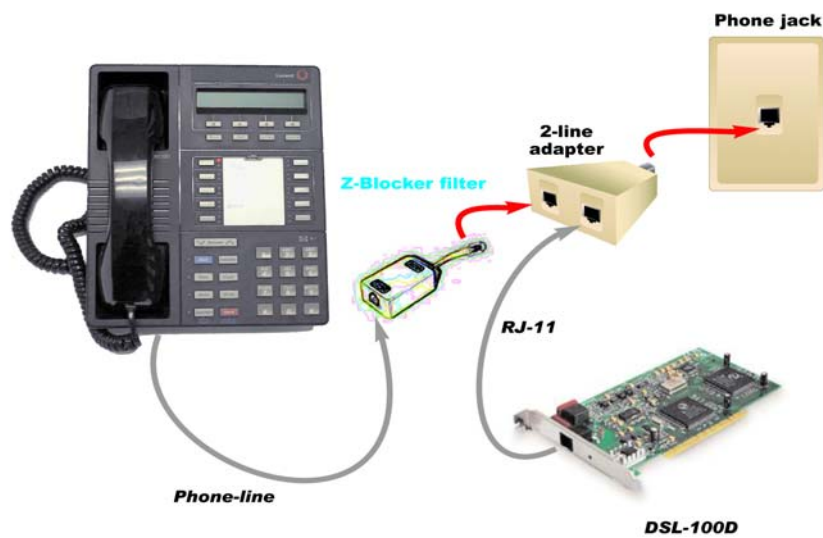
- Disconnect the existing cord from the wall jack.
- Plug the LINE end of the filter into the wall jack.
- Plug the device into the PHONE jack on the filter.
- Use only filter for all devices sharing the jack.



## **2** Sharing your phone jack with the modem and another device.

If you would like to share your phone jack with the modem and your phone, then use a standard 2-line adapter.

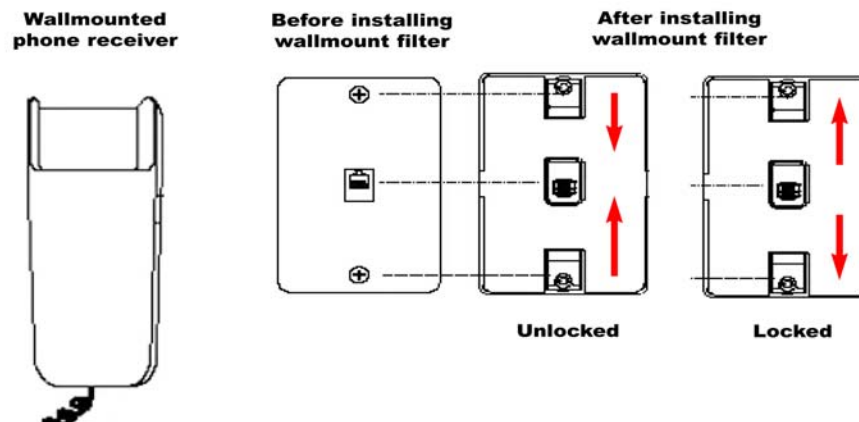
- Install the 2-line adapter into the wall jack.
- Plug the RJ-11 cable into one adapter jack.
- Plug the Line end of a “Z-Blocker” filter into the other adapter jack.
- Plug your telephone devices into the PHONE jack on the “Z-Blocker” filter.



### 3

## Installing the “Z-Blocker” filter on a wall-mounted telephone, using the wall-mount filter.

- Remove the phone. On some phone you must pull out a locking lever before removing the phone. Then push up on the phone and pull it out from the wall.
- Slide the filter locking tabs (located at the top and bottom on the front of the filter) to the UNLOCKED position.
- Place the filter over the existing wall outlet, aligning the plug and mounting slots with the socket and mounting tabs on the existing outlet, then push into place.
- Move the locking tabs to the LOCKED position as indicated in the drawing.
- Mount the telephone. If your phone has a locking lever, be sure it is unlocked before you mount it. Position the phone’s plug and mounting slots over the filter jack and metal mounting pegs. Press the phone in and pull down until secure.
- If desired, install your ADSL or Home Phoneline Network (HPN) device cord into the jack on the left side of the adapter. An answering machine may also be attached to the jack on the right side of the filter.



## Filter Installation Tips

- DO NOT install a filter on your DSL modem or on any broadband devices.
- Check the orientation of each filter.
  1. PHONE jack towards the telephone device.
  2. LINE connection towards the wall jack.
- Try to limit the number of filters in your home to the fewest practical.  
Do this by:
  1. Using one filter to isolate several devices.
  2. Not installing filters on unused phone jacks.
- Do not use more than one filter for each telephone device or group of devices.
- Plug the filter directly into the wall jack using only the attached short cord. If this cannot be done, then use a twisted-pair cable like the data cable for the modem (i.e., NOT a flat phone cord) to connect the filter to the wall jack.

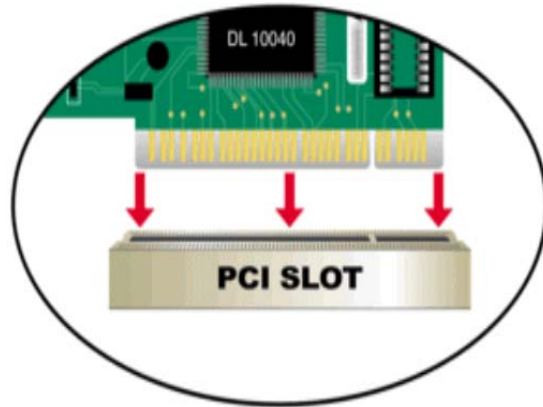
## **1** Review Package Contents

Make sure that the package contains the following items. If any items are missing, contact the reseller.

- DSL-100D/CZ ADSL Modem
- Quick Installation Guide
- Installation CD-Rom with User Manual

## **2** DSL-100D/CZ Hardware Installation

**POWER OFF** your computer. Disconnect its power, and remove its case. (Follow your PC manufacturer's instructions to prevent damage or injury.) Place the DSL-100D/CZ into an available PCI slot.

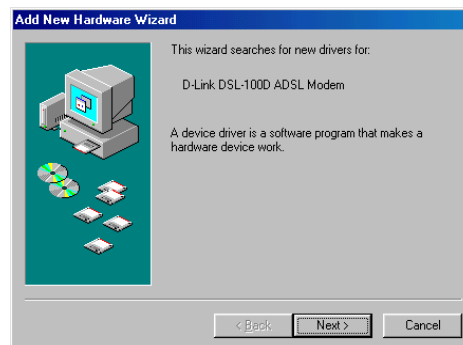


Replace the cover and **POWER ON** your computer.

## **3** DSL-100D/CZ Driver Installation

At boot up, Windows will recognize the DSL-100D/CZ modem and prompt for drivers.

**Click Next.**



## DSL-100D/CZ Driver Installation *Continued...*

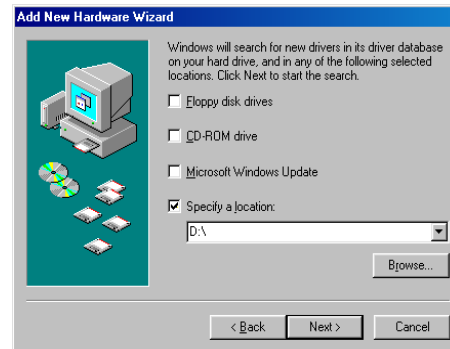
At the following screen, make sure that **“Search for the best driver for your device...”** is selected.

**Click Next.**



At this window, check **“Specify a location.”**

**Click Browse.**

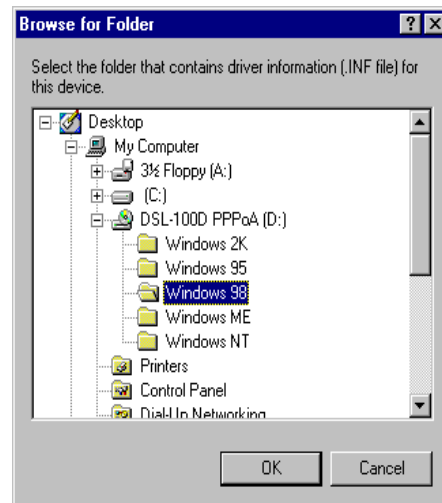


In the Browse for Folder window, please highlight the folder that corresponds to both your Operating System.

Use the chart below for

Windows 2000 – Windows 2K  
Windows 95 – Windows 95  
Windows 98 – Windows 98  
Windows ME – Windows ME  
Windows NT 4.0 – Windows NT

**Click OK.**



## DSL-100D/CZ Driver Installation *Continued...*

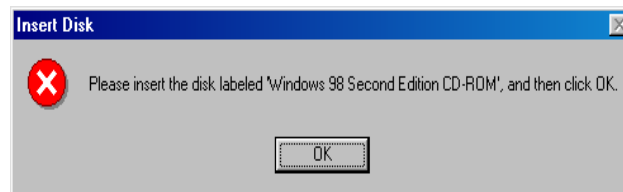
After you have selected the correct folder, **Click Next.**



Once the correct version of the drivers are found, **Click Next.**



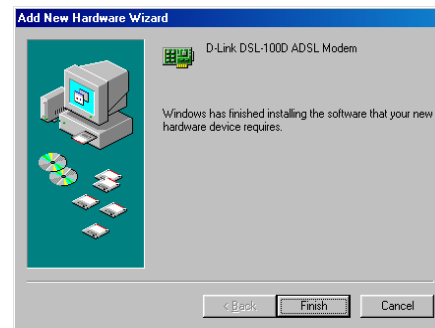
If this screen appears, place your Windows Operating System CD into your CD drive.



**Click OK.**

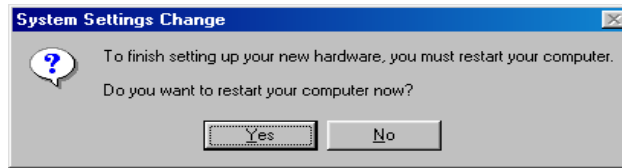
Now your driver installation is complete.

**Click Finish.**



## DSL-100D/CZ Driver Installation *Continued...*

Click **Yes** and the computer will restart automatically.

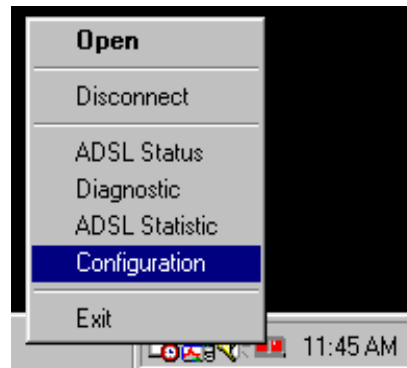


### **4** DSL-100D/CZ Modem Configuration

**Right click** on this icon, pictured above, located in the lower right hand corner of your computer screen, in the systray box.



Select **“Configuration.”**



## DSL-100D/CZ Driver Installation *Continued...*

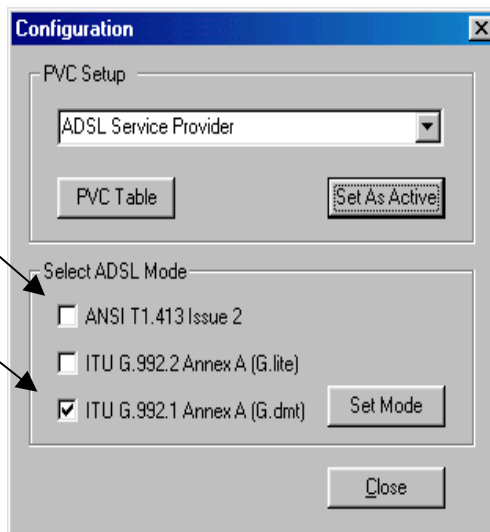
In the configuration window, make sure that PVC Setup is selected to ADSL Service Provider.

The default ADSL Mode is set to ANSI T1.413 Issue 2. **Remove the Check Mark** from ANSI T1.413 Issue 2.

**Check ITU G.992.1 Annex A (G.dmt)**

**Click on “Set Mode.”**

Please wait approximate 2 minutes for the ADSL mode to take its effect. The link like will be turn off and then will show once the connection is made.

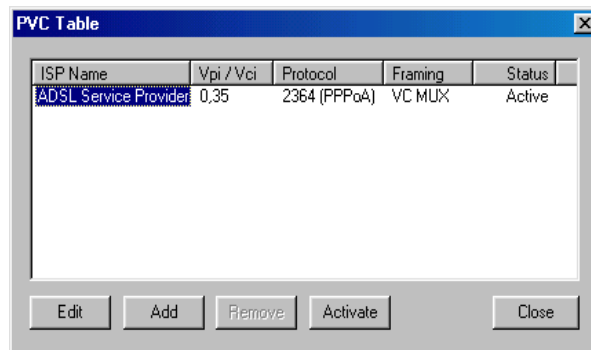


**Click Close.**

*Note: If you are not sure of the correct settings, please contact your DSL service provider for appropriate settings.*

If any changes are made in the PVC Table, make sure that the settings comply with the DSL provider's settings.

Highlight ADSL Service Provider and **click Edit.**



## DSL-100D/CZ Driver Installation *Continued...*

To make changes to your VPI and VCI Settings,

Your setup should look like the window on the right with these settings.

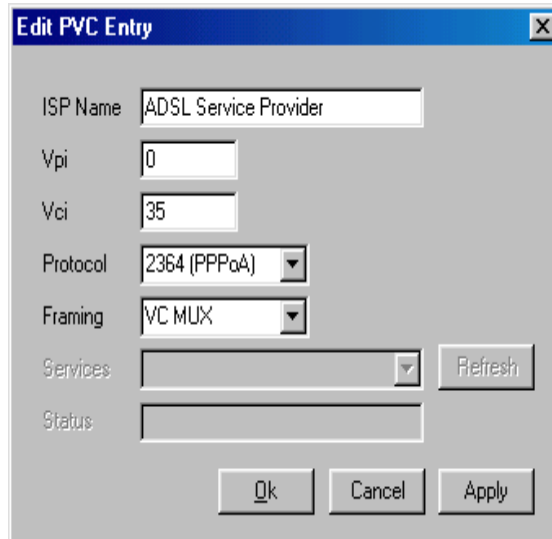
**VPI: 0**

**VCI: 35**

**Protocol: 2364 (PPPoA)**

**Framing: VC MUX**

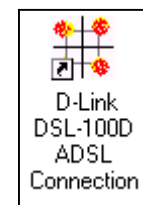
If changes were made in the Edit PVC Entry, **click Apply** and then **click OK** to save the changes.



*Note: If you are unsure of the proper settings, consult with your ADSL provider for more information.*

## **5** DSL-100D/CZ Logging On

On your desktop, you'll see an Icon like the one on the right. **Double Click** on the Icon.

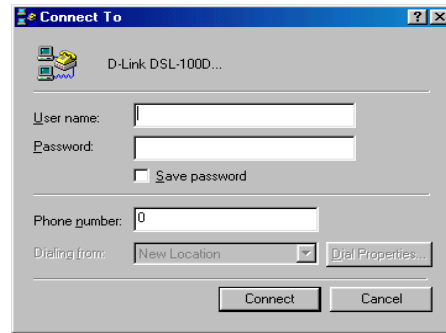


\*If you do not see the icon on the right, Skip to Step 6.

## DSL-100D/CZ Logging On *Continued...*

The “**Connect To**” windows will show.  
Enter **User name** and **Password**.

**Click Connect.**



You can now access the Internet using your DSL-100D/CZ ADSL modem!

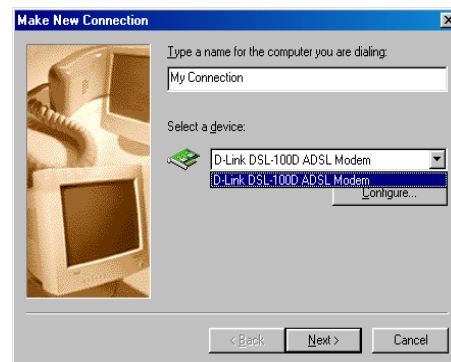
## **6** Setting up Dial-Up Networks

Go to  
**Start > Programs > Accessories > Communications > Dial-Up Networking.**

**Double Click on “Make New Connection.”**

Make sure that “**D-Link DSL-100D/CZ ADSL Modem**” is selected in “**Select a device**” menu.

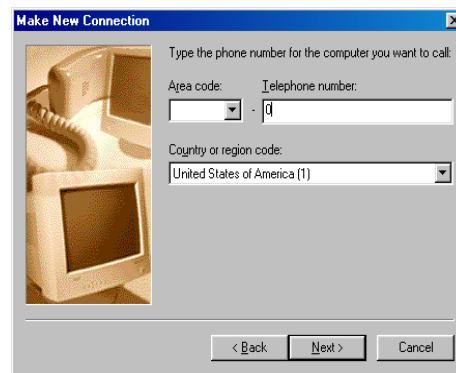
**Click Next.**



## DSL-100D/CZ Setting up Dial-Up Networks *Continued...*

Enter “0” in the telephone number section.

**Click Next.**



**Click Finish**



After “My Connection” setup is configured, go to **Start > Programs > Accessories > Communications > Dial-Up Networking**.

There, you will see an icon that says “My Connection.” **Double Click** on the Icon.



## DSL-100D/CZ Setting up Dial-Up Networks *Continued...*

The “**Connect To**” windows will show. Enter **User name** and **Password**.

**Click Connect.**



*You can now access the Internet using your DSL-100D/CZ ADSL modem!*

**NOTES**

**D-Link<sup>®</sup>**  
DIGITAL HOME SOLUTIONS  
Printed in Taiwan  
Version 2.0