

## Before you start

### 1

#### Local Cable Service

If you do not have an existing cable Internet connection, contact your local cable operator to subscribe to a broadband connection.

For the modem to be recognized on the network of the cable Internet provider, the following modem information will be needed:

- **Modem Make and Model** i.e. D-Link DCM-200
- **Modem Serial Number** i.e. HQT10C000180 (normally found on the label at the bottom of the unit).
- **Modem MAC Address** i.e. 0050BA2F0804 (on the back of the modem)

### 2

#### Connecting The Cable Modem

Connect the external power adapter into the connector labeled “**POWER**” and the other end to the electrical outlet.

**\*NOTE:** Use only the AC power adapter supplied with the DCM-200 Cable Modem.



## Connecting The Cable Modem *Continued...*

Connect the coaxial cable provided for the Internet connection to the jack labeled “**CABLE IN**” in the back of the cable modem unit.

Wait 1 to 3 minutes for the link light to illuminate. If the link light does not glow, please contact your broadband cable company for further instructions.



- A.** Connect an Ethernet cable to the port labeled “**Ethernet**” on the back of the cable modem.



- B.** Connect a USB cable to the “**USB type B**” port on the back of cable modem unit.

**IMPORTANT Note:**

*\* The DCM-200 USB/Ethernet Cable Modem will only work with either the Ethernet port or the USB port at one time. THEY CANNOT WORK SIMULTANEOUSLY.*



## Connecting The Cable Modem *Continued...*

C. The final cable modem setup will look like the figures below:

**Ethernet Cable Connection**



OR

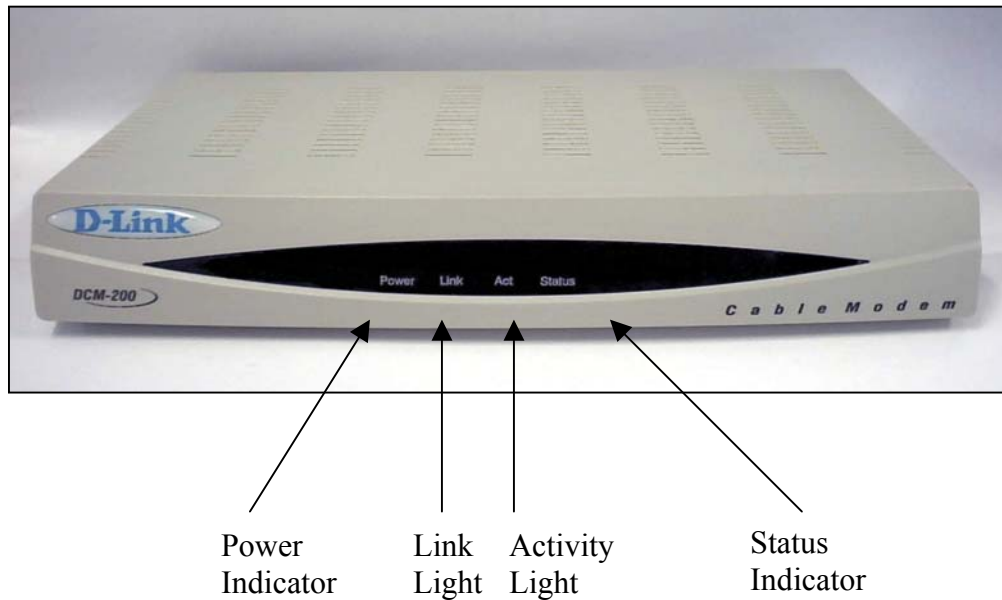
**USB Cable Connection**



**\*Note:** When using the USB Cable Connection, make sure the **LINK** light is on in front of the modem before you connect the USB type A to your computer. **DO NOT CONNECT THE USB CABLE TO YOUR COMPUTER IF THE LINK LIGHT IS NOT ON.**

### 3

## Verifying The Modem Status Lights



Verify the Cable Modem connections using the LED indicators

- Power: On after the modem has been plugged into an AC power source.
- Link: On when the connection to the cable network is established. **The link light must be on before any physical connections are made to the computer.**
- Act (*Activity*): Indicates that traffic activity is passing through your cable modem port.
- Status: On when the Ethernet cable is properly connected to your PC.

# 4

## Installing the USB Drivers

**\*Note:** This installation is only necessary if you are using the USB cable to connect your cable modem to the computer.

### Windows 98/98 SE

If your PC is running Windows 98/98SE, it should detect the new hardware automatically. However, if it does not, please follow the steps below to install the necessary driver:

1. Click **Start-> Settings-> Control Panel-> Add New Hardware**. The following window will open:



Click **Next**.

## Windows 98/98 SE Continued...

Select “**Search for the best driver for your device (Recommended).**” and then click **Next**.



Check (✓) “**CD-Rom drive**” and then click **Next**.



## Windows 98/98 SE Continued...

Select “**The updated driver (Recommended)** **D-Link USB Cable Modem**” and then click **Next**.

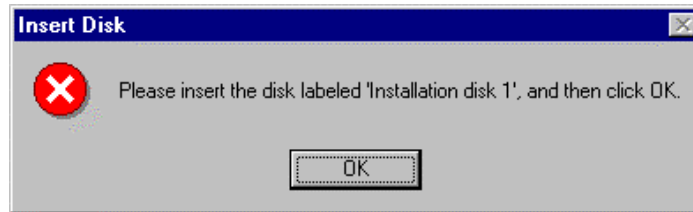


Click **Next**.



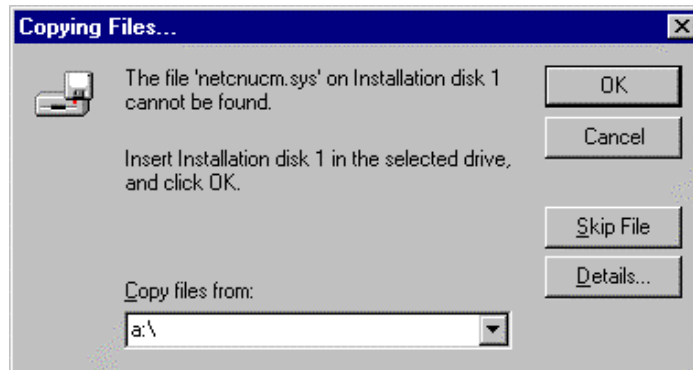
## Windows 98/98 SE Continued...

If a warning message as the following appears, insert the installation disk and click **OK**.

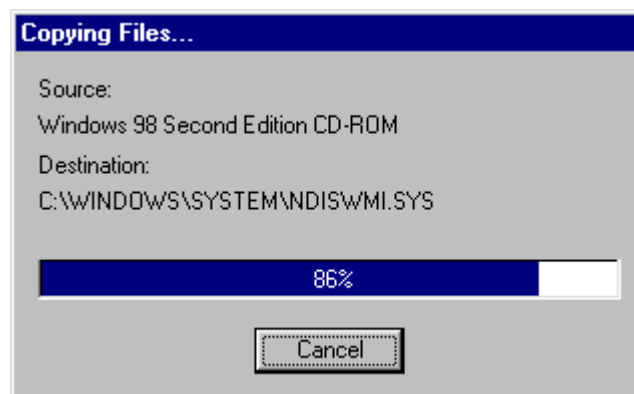


Indicate the location of driver by typing **a:\** in the space of “Copy files from:”

Click **OK** to allow Windows to install the driver for your USB Cable Modem.



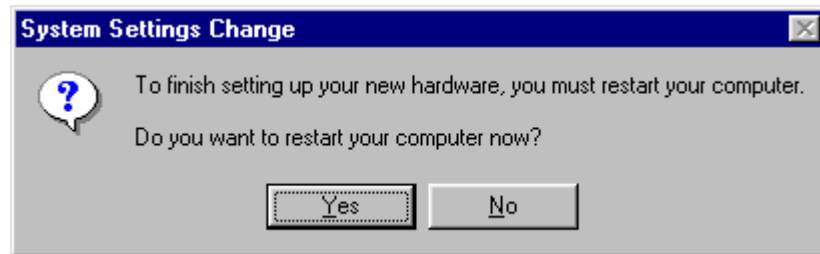
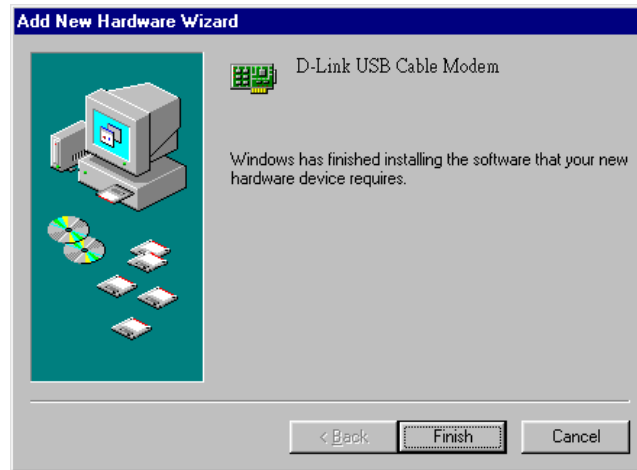
Once the necessary driver files have been copied, the following window will be displayed. In the event of a version conflict, we recommend keeping all previous versions.





## Windows 98/98 SE Continued...

Click **Finish** to complete the driver installation procedure. The DCM-200 is now installed.



Before you can begin using the DCM-200 USB/Ethernet Cable Modem, you must reboot your PC. Click “**Yes**” to proceed with this operation

## Windows ME (Millennium Edition)

If your PC is running Windows ME, it will automatically detect the new hardware through a series of windows displayed below. Follow the steps described below to add the driver for the USB/Ethernet Cable Modem.

Once the USB cable is connected to the USB interface, the following window will be displayed:

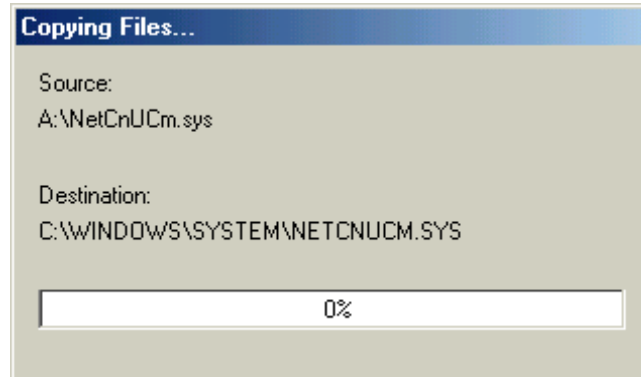
Select “**Automatic search for a better driver (Recommended).**” and then click **Next**.



## Windows ME (Millennium Edition) *Continued...*

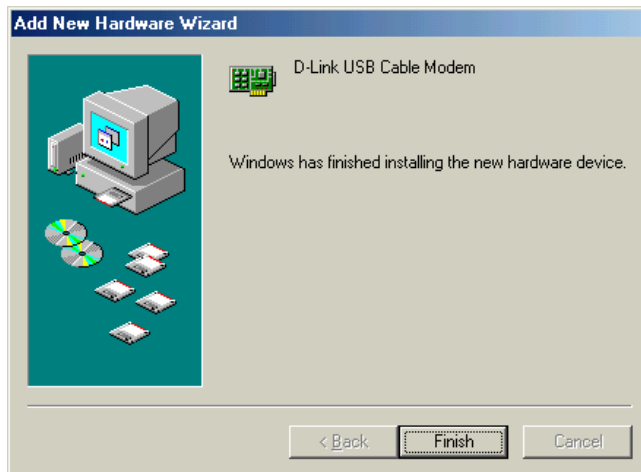
The following window will appear:

Once the necessary driver files have been copied, the following window will be displayed. In the event of a version conflict, we recommend keeping all previous versions.



Click **Finish** to complete the driver installation procedure. The DCM-200 is now installed.

**Please note that before you can begin using the DCM-200 USB/Ethernet Cable Modem, you must reboot your PC.**

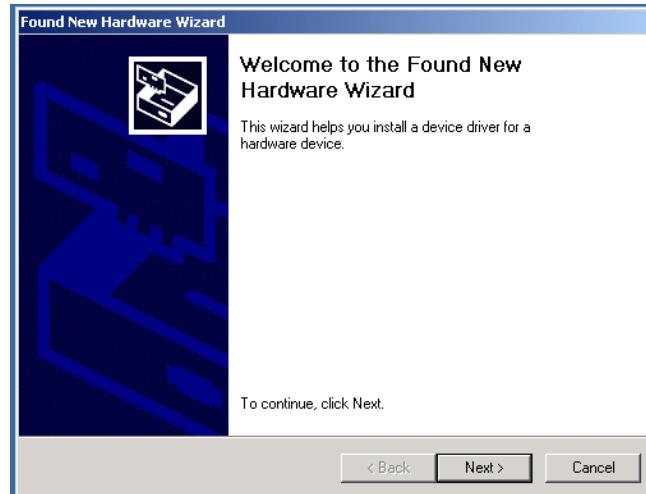


## Windows 2000

If your PC is running Windows 2000, it will automatically detect the new hardware through a series of windows displayed below. Follow the steps described below to add the driver for the USB/Ethernet Cable Modem.

Once the USB cable is connected to the USB interface, the following window will be displayed:

Click **Next**.



Select “**Search for a suitable driver for my device (recommended)**” and then click **Next**.

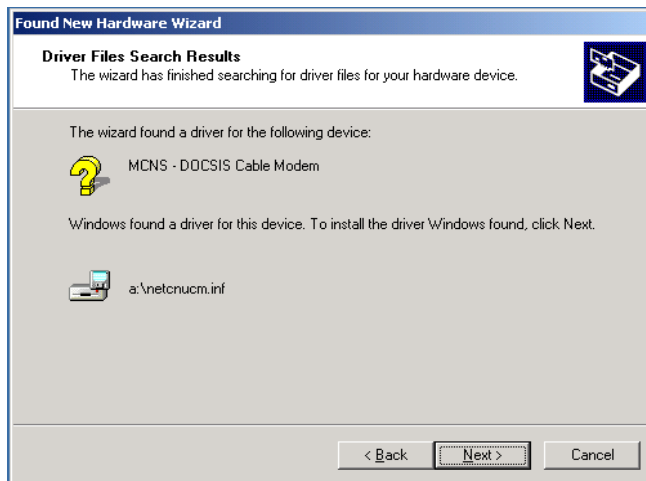


## Windows 2000 *Continued...*

Check (✓) “**CD-ROM drives**” and then click **Next**.

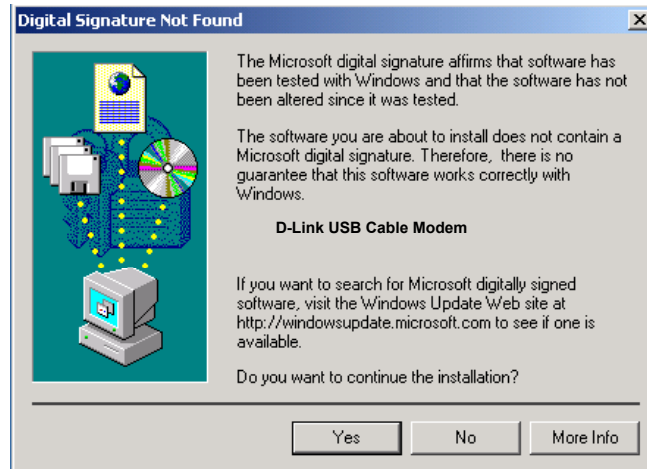


Click **Next** to allow Windows to install the driver for your DMC-200 USB/Ethernet Cable Modem.



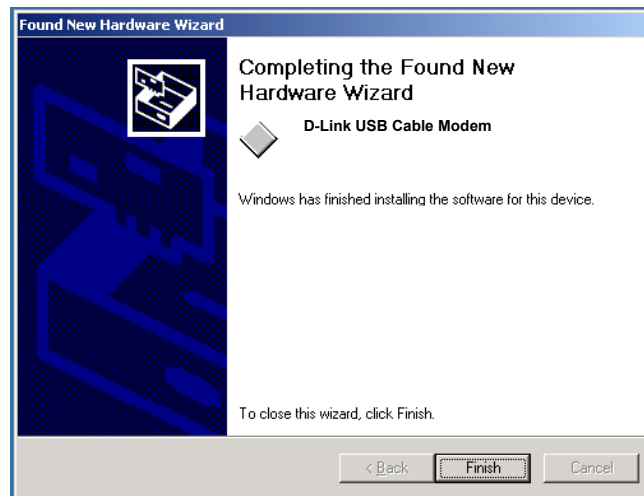
## Windows 2000 Continued...

Click **Yes** to continue.



Click **Finish** to complete the driver installation procedure. The DCM-200 is now installed.

**Please note that before you can begin using the DCM-200 USB/Ethernet Cable Modem, you must reboot your PC.**



## 5 Test your Internet Connection

Open the web browser to your favorite site.

\* Your cable service provider will provide you with the proper instructions on your network setup.



**D-Link<sup>®</sup>**

**DIGITAL HOME SOLUTIONS**

**Printed in Taiwan**

**Version 2.0**