

# D-Link Quick Installation Guide

This product can be set up using any current web browser, i.e., Internet Explorer 6 or Netscape Navigator 6.2.3.



**DI-614+**  
2.4GHz Wireless Router

## Before You Begin

1. If you purchased this router to share your high-speed Internet connection with other computers, you must have either an Ethernet-based Cable or DSL modem with an established Internet account from an Internet Service Provider (ISP).
2. It's best to use the same computer that is connected to your modem for configuring the DI-614+ Wireless Router. The DI-614+ acts as a DHCP server and will assign all the necessary IP address information on your network. **See Appendix at the end of this Quick Installation Guide or the Manual on the CD-ROM for setting each network adapter to automatically obtain an IP address.**

## Check Your Package Contents



**DI-614+ 2.4GHz Wireless Router**



**CD-ROM (containing Manual and Warranty)**



**Ethernet (CAT5 UTP/Straight Through) Cable**



**5V DC Power Adapter**



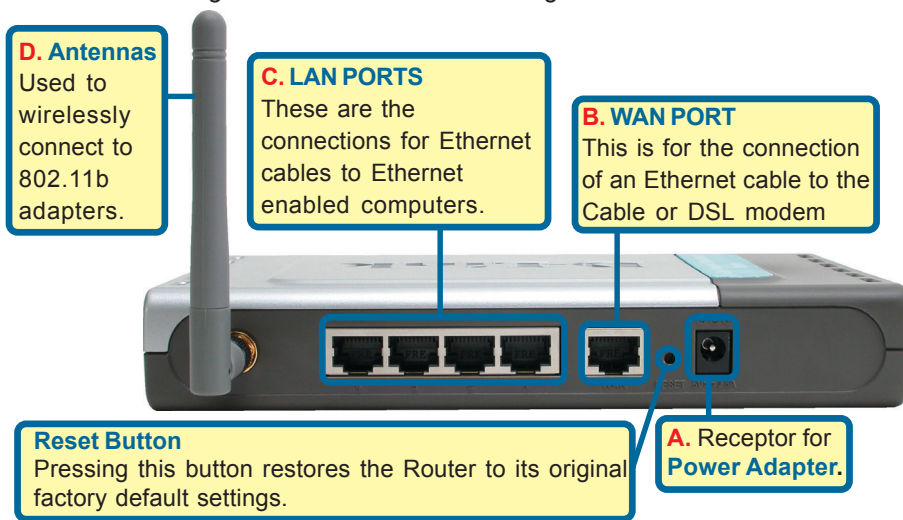
Using a power supply with a different voltage rating will damage and void the warranty of this product.

If any of the above items are missing, please contact your reseller.

# 1

## Connecting The DI-614+ Wireless Router To Your Network

- A.** First, connect the power adapter to the **receptor** at the back panel of the DI-614+ and then plug the other end of the power adapter to a wall outlet or power strip. The Power LED will turn **ON** to indicate proper operation.
- B.** 1. Power off your Cable or DSL modem; some devices may not have a on/off switch and will require you to unplug the power adapter. Now, the DI-614+ should be powered on and the Cable / DSL modem should be turned off.
2. Cable / DSL modem (**Power Off**) – DI-614+ (**Power On**)  
Connect an Ethernet cable to the Ethernet jack located on the Cable / DSL modem. After the Ethernet cable is securely connected, power on the Cable / DSL modem by turning on the unit or plugging in the power adapter.
3. Cable / DSL modem (**Power On**) – DI-614+ (**Power On**)  
Insert the other end of the Ethernet cable to the WAN PORT on the back panel of the DI-614+. The WAN LED light will illuminate to indicate proper connection. If the WAN LED is not illuminated, please go back to step B1 and repeat the instructions.
- C.** Insert an Ethernet cable to **LAN port 1** on the back panel of the DI-614+ and an available Ethernet port on the network adapter in the computer you will use to configure the DI-614+. The LED light for LAN Port 1 will illuminate to indicate proper connection. (Note: The LAN Ports on the DI-614+ are Auto-MDI/MDIX. Meaning you can use a straight-through or crossover-Ethernet cable to the LAN Ports.)
- D.** Computers equipped with 802.11b wireless adapters will be able to connect to the DI-614+. The DWL-650+ AirPlus Wireless Cardbus Adapter and the DWL-520+ AirPlus Wireless PCI Adapter will be able to connect out of the box with the router using their default wireless settings.



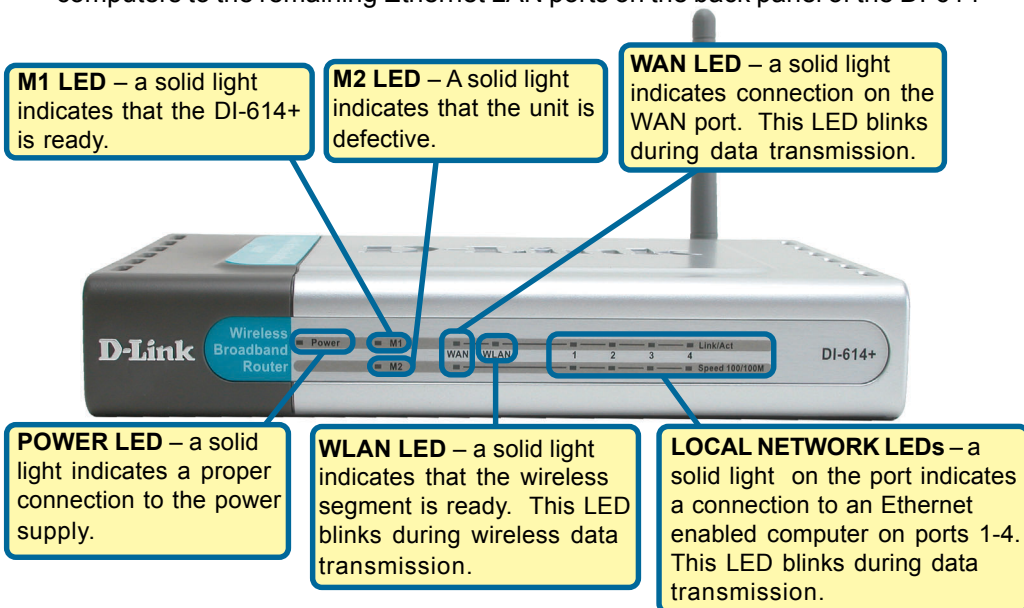
2

## Restart Your Computer

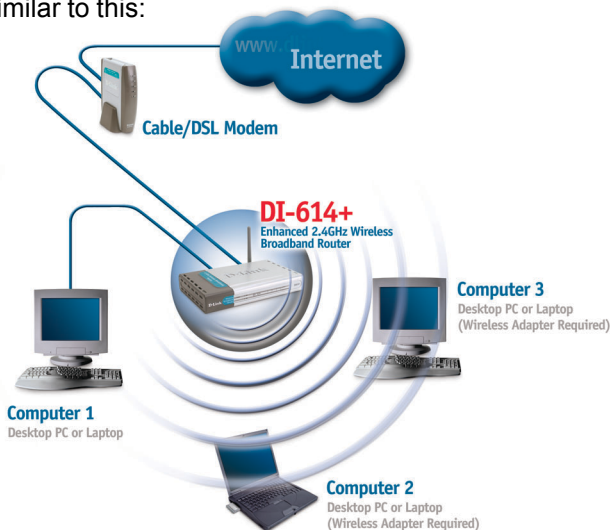
3

## Connecting Additional Computers To The DI-614+

Using additional Ethernet (CAT5 UTP) cables, connect your Ethernet-equipped computers to the remaining Ethernet LAN ports on the back panel of the DI-614+



When you have completed the steps in this *Quick Installation Guide*, your connected network should look similar to this:



# 4

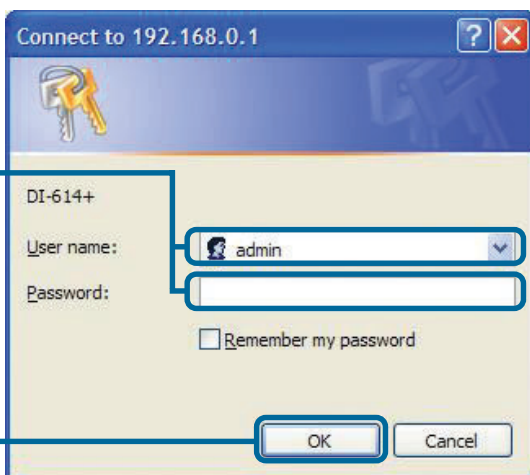
## Using The Setup Wizard

Open your Web browser and type "**http://192.168.0.1**" into the URL address box. Then press the **Enter** or **Return** key.



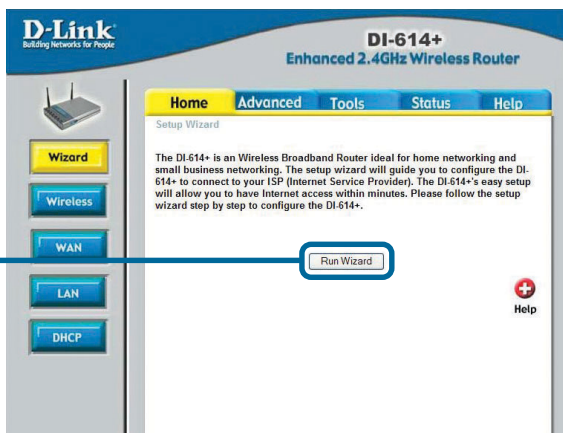
The logon pop-up screen will appear.

Type "**admin**" for the username and leave the password field blank.



Click **OK**

Once you have logged in, the **Home** screen will appear.



Click **Run Wizard**

# 4

## The Setup Wizard (continued)

You will see the following screens

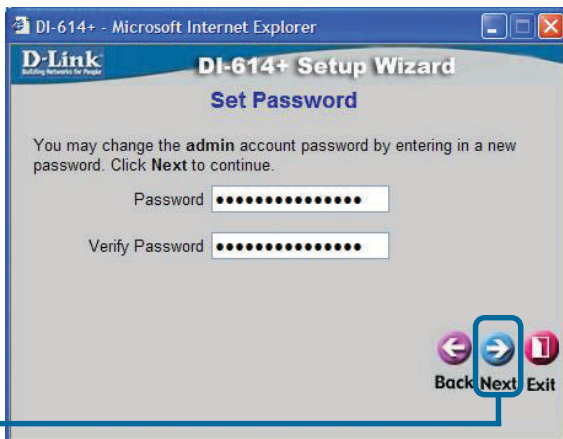
Click **Next**



**Set up your new password.**

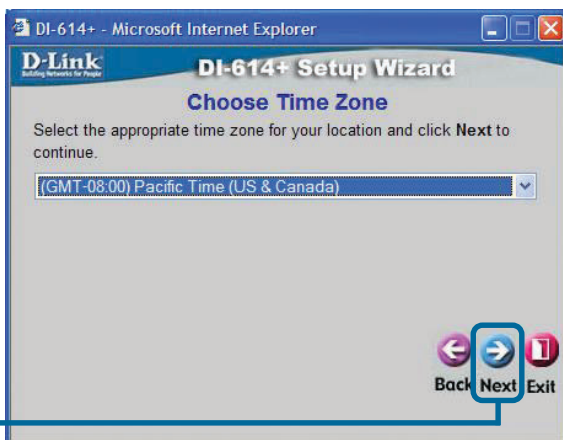
You have the option to establish a password.

Click **Next**



**Choose your time zone** from the drop down list.

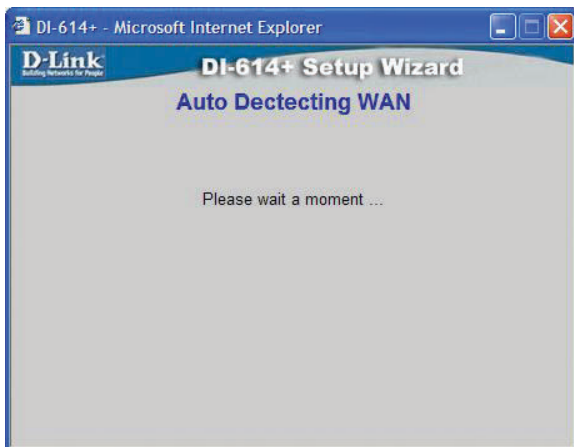
Click **Next**



# 4

## The Setup Wizard (continued)

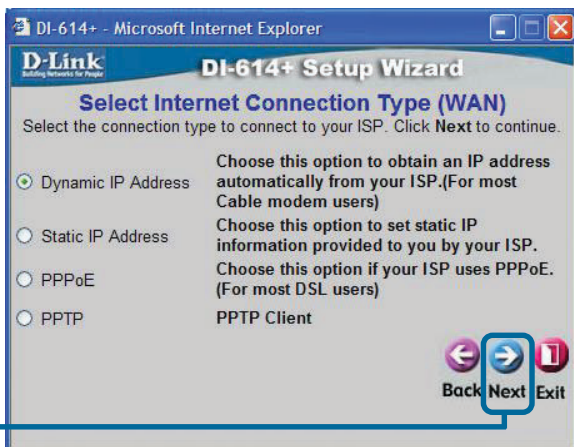
A this point, the setup wizard will try to auto-detect your Internet connection type. If you have a Dynamic or PPPoE connection, you will be brought to the corresponding page.



Otherwise, you will see the following screen:

### Select your Internet Connection.

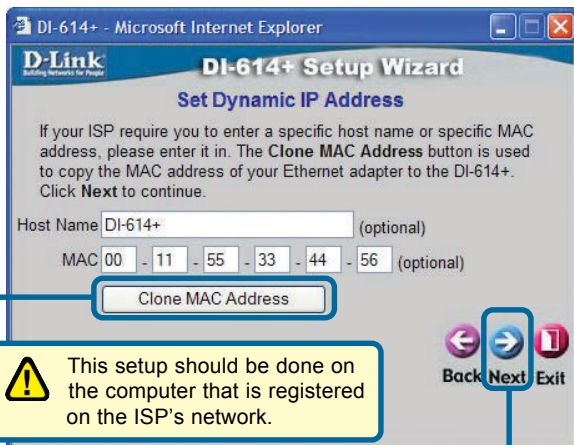
You will be prompted to select the type of Internet connection for your router.



**!** If you are unsure of which setting to select, please contact your Internet Service Provider.

Click **Next**

If you selected **Dynamic IP Address**, this screen will appear: (Used mainly for Cable Internet service.)



Click the **"Clone MAC Address"** button to automatically copy the MAC address of the network adapter in your computer. You can also manually type in the MAC address.

**!** This setup should be done on the computer that is registered on the ISP's network.

Click **Next**

Please continue to **Wireless Setup**.



# 4

## The Setup Wizard (continued)

If your ISP requires a **Static IP Address**, and this option is selected, then this screen will appear:

Enter the IP address information originally provided to you by your ISP. You will need to complete all the required fields.

DI-614+ - Microsoft Internet Explorer

**D-Link**  
Building Networks for People

**DI-614+ Setup Wizard**

**Set Static IP Address**

Enter in the static IP information provided to you by your ISP. Click **Next** to continue.

WAN IP Address: 0.0.0.0

WAN Subnet Mask: 0.0.0.0

WAN Gateway Address: 0.0.0.0

Primary DNS Address: 0.0.0.0

Secondary DNS Address: 0.0.0.0 (optional)

Back Next Exit

Click **Next**

Please continue to **Wireless Setup**.

If your ISP uses **PPPoE** (Point-to-Point Protocol over Ethernet), and this option is selected, then this screen will appear: (Used mainly for DSL Internet service.)

Enter in the username and password provided to you by your ISP.

DI-614+ - Microsoft Internet Explorer

**D-Link**  
Building Networks for People

**DI-614+ Setup Wizard**

**Set PPPoE**

The service name is optional but may be required by your ISP. Click **Next** to continue.

User Name:

Password:

Retype Password:

Service Name (optional):

Back Next Exit

Click **Next**

Please be sure to remove any existing PPPoE client software installed on your computers.

Please continue to **Wireless Setup**.

## 4

# The Setup Wizard (continued)

## Wireless Setup

The default wireless settings for your 802.11b wireless network are:

SSID = **default**

Channel = **6**

You can change these settings to match an existing wireless network.

DI-614+ - Microsoft Internet Explorer

**D-Link** Building Networks for People

**DI-614+ Setup Wizard**

**Set Wireless LAN Connection**

Enter in the SSID name and Channel number to be used for the Wireless Access Point. Click **Next** to continue.

SSID default

Channel 6

Back Next Exit

Click **Next**

If you wish to use encryption for your 802.11b network, the DI-614+ is capable of three levels of wireless encryption - 64-bit, 128-bit, and 256-bit. **By default the encryption is disabled.** You can change the encryption settings for more secure wireless communication.

DI-614+ - Microsoft Internet Explorer

**D-Link** Building Networks for People

**DI-614+ Setup Wizard**

If you wish to use encryption, enable it here and enter the encryption Key Values. Click **Next** to continue.

WEP ☐ Enabled ☒ Disabled

Wep encryption 64Bit

Key 0000000000

Input 10 HEX characters (HEX is 0~9, A~F, or a~f)

Back Next Exit

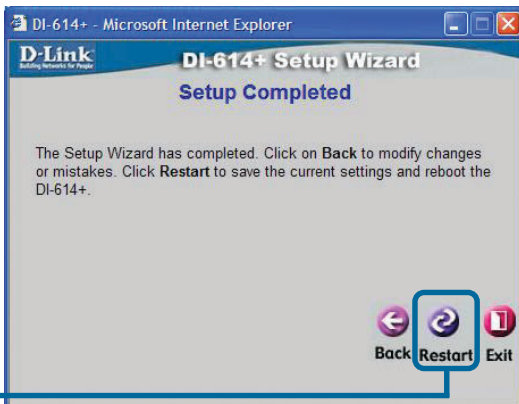
Click **Next**



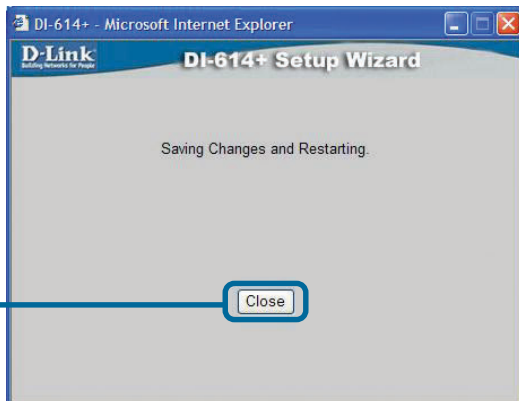
# 5

## Your Setup is Complete!

Click **Restart**



Click **Close**



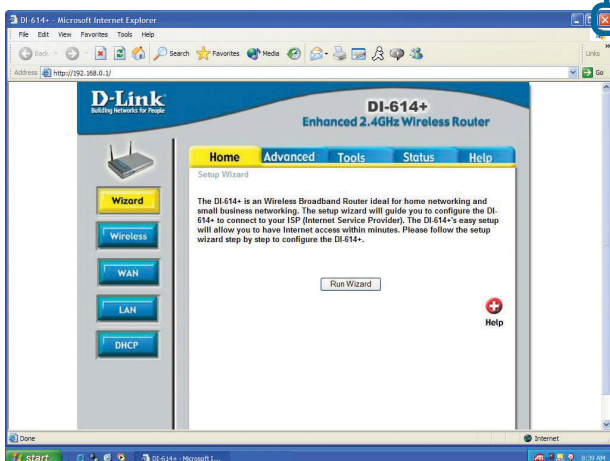
## Test Internet Connection.

You will be returned to the **Home** tab.

Click to **Exit**

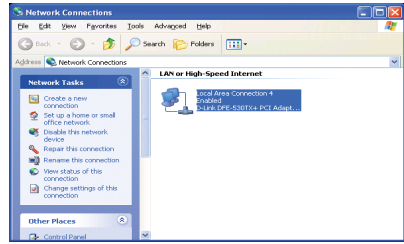
Then **relaunch** your Web browser (i.e., *Internet Explorer* or *Netscape Navigator*), to link to your favorite Web site to test your Internet connection.

For additional settings or information, refer to the **Advanced**, **Tools**, or **Status** tabs on the web-management interface; or to the Manual located on the CD.

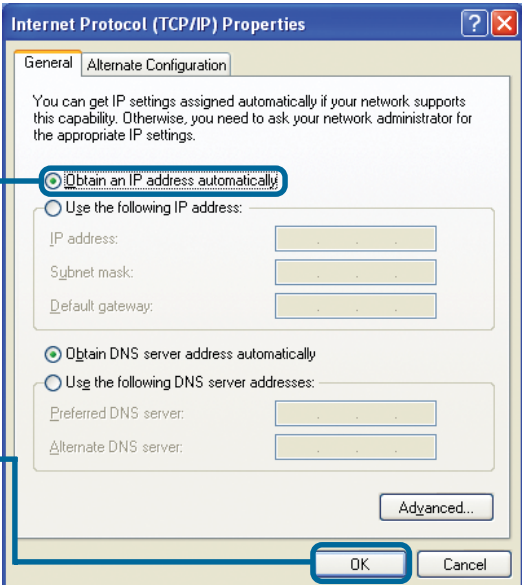
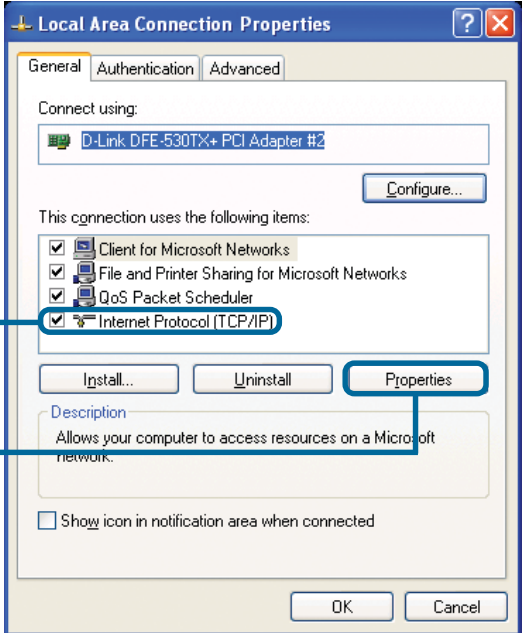


# APPENDIX (continued)

To connect to the network, make sure the network adapter in your computer is configured properly. Here's how to configure the network adapter to obtain an IP address automatically for the DI-614+ Broadband Router.



For **Microsoft Windows XP**:  
Go to **Start > right click on My Network Places > select Properties > Double-click on the Network Connection** associated with the Ethernet adapter (i.e., D-Link DFE-530TX+).



**Select Obtain an IP address automatically**

**Click OK**

**Restart your computer**  
(if necessary)

## For Apple Macintosh OS X:

Go to the Apple Menu Click on **Network** and Select **System Preferences**

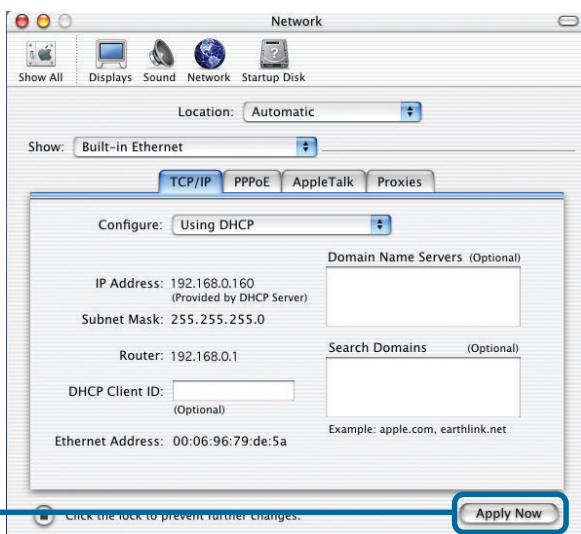
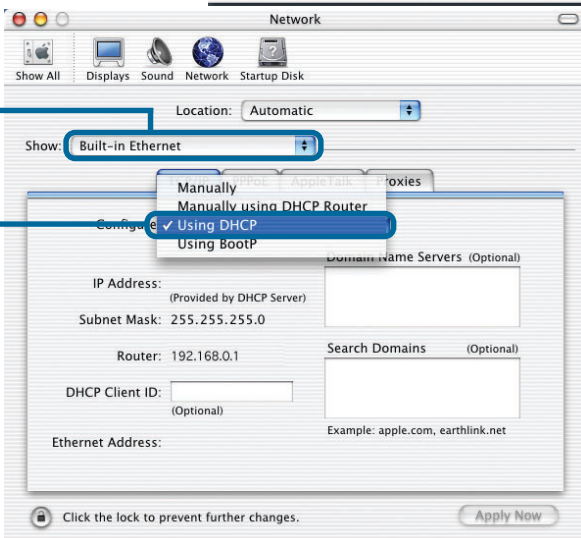
Click on  
**Network**

Select **Built-in Ethernet** in the Show pull down menu

Select **Using DHCP** in the Configure pull down menu

Click on **Apply Now**

The IP address information, the Subnet Mask, the Router's IP address and the Ethernet adapter address will appear



# Technical Support

You can find software updates and user documentation on the D-Link website.

D-Link provides free technical support for customers within the United States and within Canada for the duration of the warranty period on this product.

U.S. and Canadian customers can contact D-Link technical support through our website, or by phone.

## Tech Support for customers within the United States:

### ***D-Link Technical Support over the Telephone:***

(877) 453-5465

24 hours a day, seven days a week.

### ***D-Link Technical Support over the Internet:***

<http://support.dlink.com>

email: [support@dlink.com](mailto:support@dlink.com)

## Tech Support for customers within Canada:

### ***D-Link Technical Support over the Telephone:***

(800) 361-5265

Monday to Friday 8:30am to 9:00pm EST

### ***D-Link Technical Support over the Internet:***

<http://support.dlink.ca>

email: [support@dlink.ca](mailto:support@dlink.ca)

