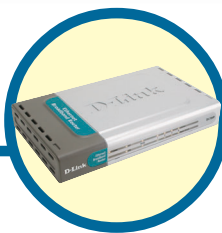


D-Link Quick Installation Guide

This product can be set up using any current web browser, i.e., Internet Explorer or Netscape Navigator.



DI-704P

Ethernet Broadband
Router and Print Server

Before You Begin

1. If you purchased this router to share your high-speed Internet connection with other computers, you must have either an Ethernet-based Cable or DSL modem with an established Internet account from an Internet Service Provider (ISP).
2. It's best to use the same computer that is connected to your modem for configuring the DI-704P Broadband Router. The DI-704P acts as a DHCP server and will assign all the necessary IP address information on your network. **See Appendix at the end of this Quick Installation Guide or the Manual on the CD-ROM for setting each network adapter to automatically obtain an IP address.**

Check Your Package Contents



DI-704P Ethernet Broadband Router



**CD-ROM (containing Manual, Warranty and
Print Server Software for Windows)**



Ethernet (CAT5 UTP/Straight Through) Cable



5V DC Power Adapter



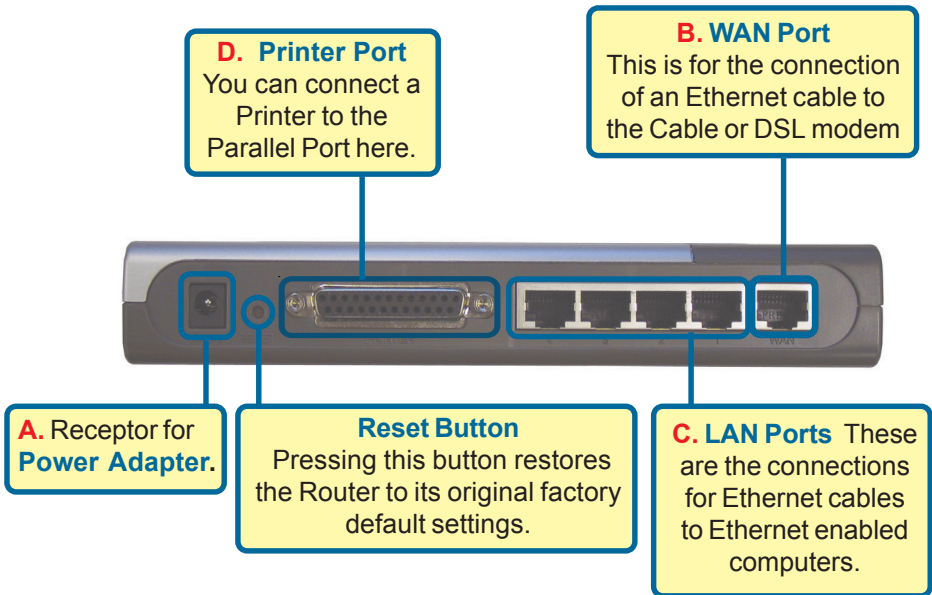
Using a power supply with a different voltage rating will damage and void the warranty of this product.

If any of the above items are missing, please contact your reseller.

1

Connecting The DI-704P Broadband Router To Your Network

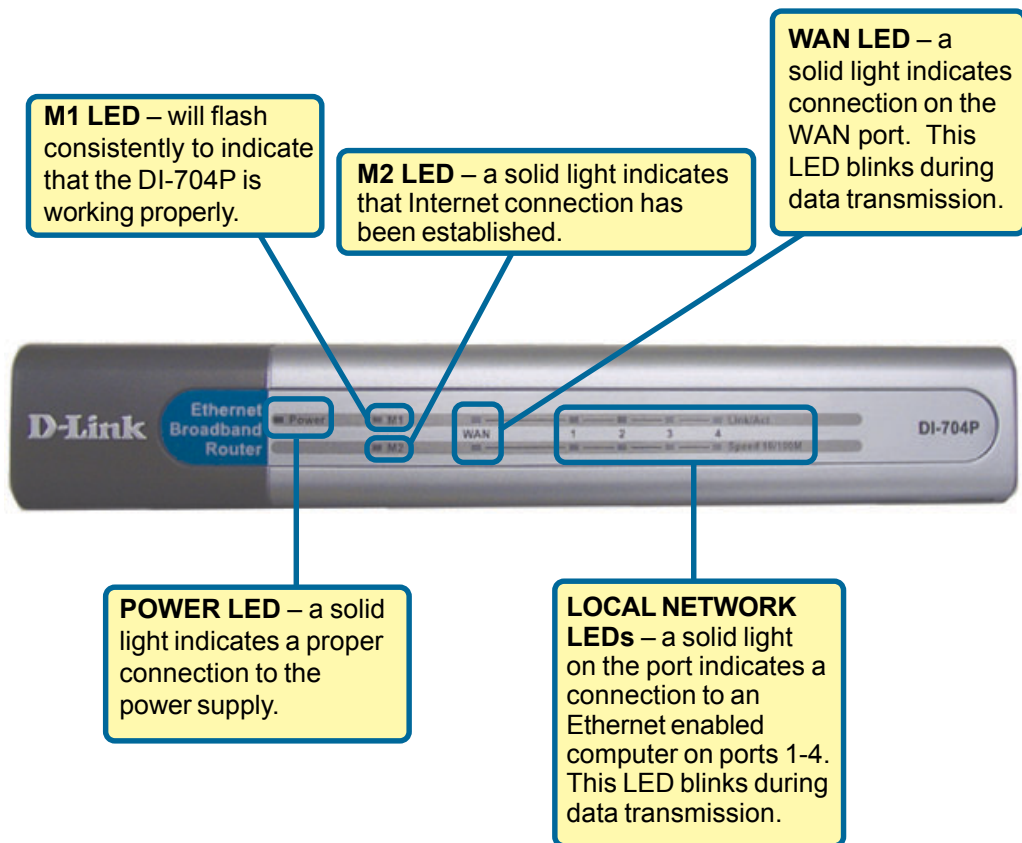
- A.** First, connect the power adapter to the **receptor** at the back panel of the DI-704P and then plug the other end of the power adapter to a wall outlet or power strip. The Power LED will turn **ON** to indicate proper operation.
- B.** Insert one end of an Ethernet cable to the **WAN port** on the back panel of the DI-704P and the other end to the Ethernet port located on your Cable or DSL modem. The WAN LED light will illuminate to indicate proper connection.
- C.** Insert an Ethernet cable to **LAN port 1** on the back panel of the DI-704P and an available Ethernet port on the network adapter in the computer you will use to configure the DI-704P. The LED light for LAN Port 1 will illuminate to indicate proper connection. (Note: The LAN Ports on the DI-704P are Auto-MDI/MDIX. Meaning you can use a straight-through or crossover Ethernet (CAT5) cable to the LAN Ports.
- D.** The parallel port on the DI-704P is used to connect printers only. Connect one end of the printer cable to your printer and the other end to the DI-704P.



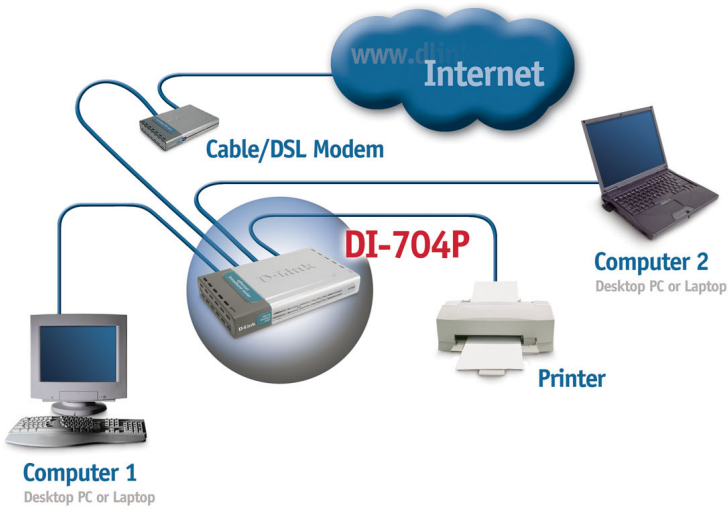
Restart Your Computer

Connecting Additional Computers To The DI-704P

Using additional Ethernet (CAT5 UTP) cables, connect your Ethernet-equipped computers to the remaining Ethernet LAN ports on the back panel of the DI-704P.



When you have completed the steps in this *Quick Installation Guide*, your connected network should look similar to this:



4

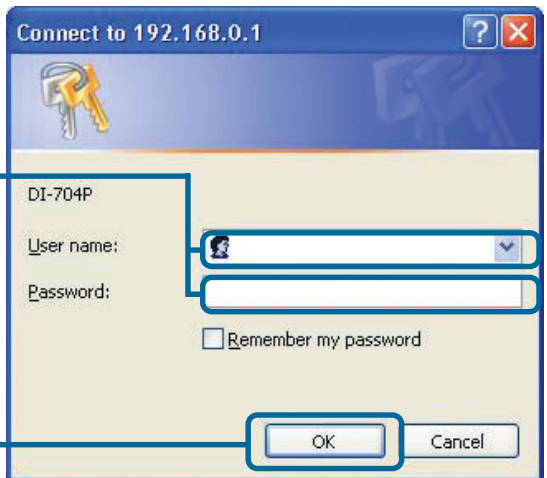
Using The Setup Wizard

Open your Web browser and type “**http://192.168.0.1**” into the URL address box. Then press the **Enter** or **Return** key.



The login pop-up screen will appear.

Type “**admin**” for the username and leave the password field blank.

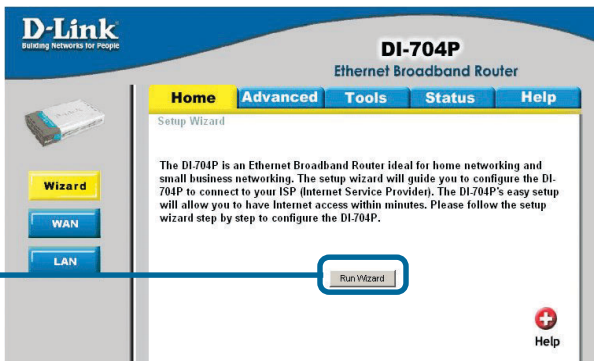


Click **OK**

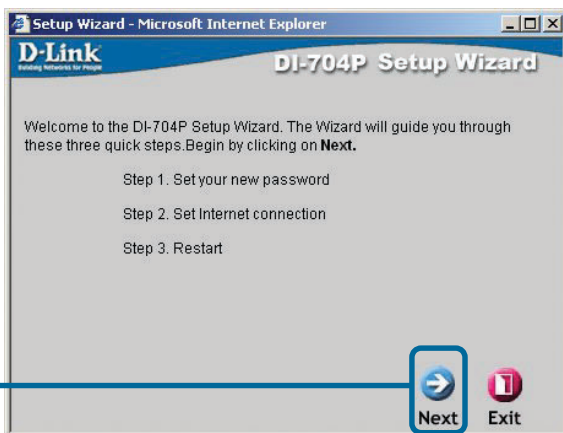
4

The Setup Wizard (continued)

Once you have logged in, the **Home** screen will appear.

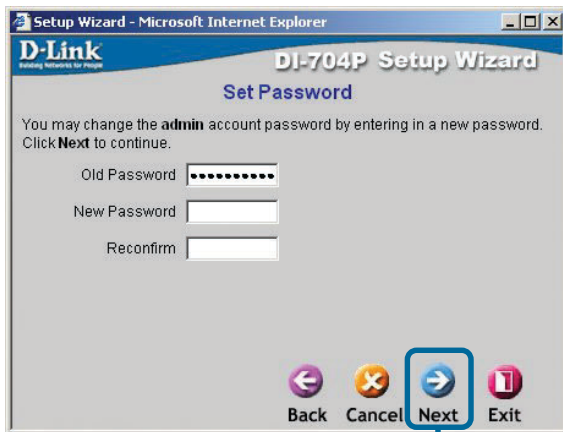


You will see the following screens



Set up your new password.


You have the option to establish a password.



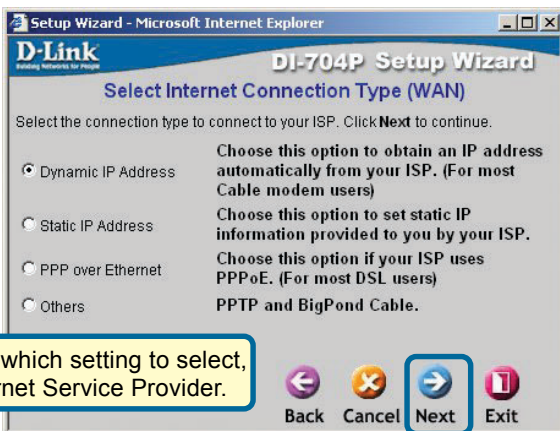
4

The Setup Wizard (continued)

Select your Internet Connection. You will be prompted to select the type of Internet connection for your router.

 If you are unsure of which setting to select, please contact your Internet Service Provider.

Click **Next**



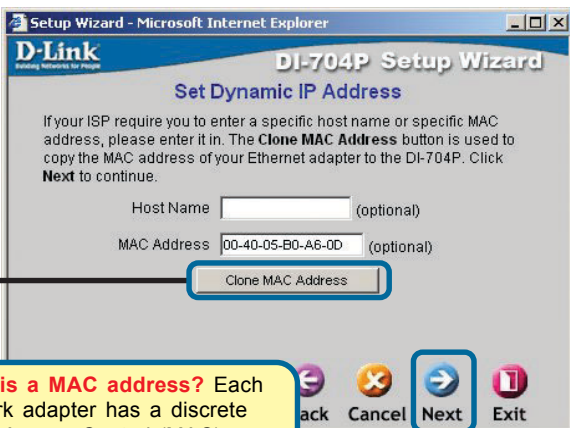

Select **Others** only if you use PPTP in Europe or Big Pond Cable in Australia.

If you selected **Dynamic IP Address**, this screen will appear: (Used mainly for Cable Internet service.)

Click the **"Clone MAC Address"** button to automatically copy the MAC address of the network adapter in your computer. You can also manually type in the MAC address.

What is a MAC address? Each network adapter has a discrete Media Access Control (MAC) address. Note that some computers and peripherals may already include built-in network adapters.

Click **Next**



4

The Setup Wizard (continued)

If your ISP requires a **Static IP Address**, and this option is selected, then this screen will appear:

Enter the IP address information originally provided to you by your ISP. You will need to complete all the required fields.

Setup Wizard - Microsoft Internet Explorer

D-Link
Building Networks for People

DI-704P Setup Wizard

Set Static IP Address

Enter in the static IP information provided to you by your ISP. Click **Next** to continue.

WAN IP Address

WAN Subnet Mask

WAN Gateway

Primary DNS

Secondary DNS

Back Cancel **Next** Exit

Click **Next**

If your ISP uses **PPPoE** (Point-to-Point Protocol over Ethernet), and this option is selected, then this screen will appear: (Used mainly for DSL Internet service.)

Please be sure to remove any existing PPPoE client software installed on your computers.

Enter in the username and password provided to you by your ISP.

Setup Wizard - Microsoft Internet Explorer

D-Link
Building Networks for People

DI-704P Setup Wizard

Set PPP over Ethernet

The service name is optional but may be required by your ISP. Click **Next** to continue.

PPPoE Account

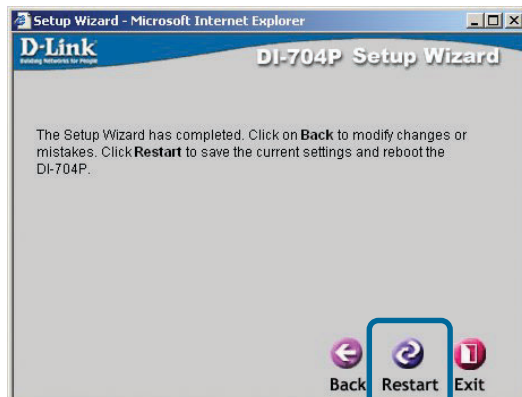
PPPoE Password

PPPoE Service Name (optional)

Back Cancel **Next** Exit

Click **Next**

5 Your Setup is Complete!



Click **Restart**

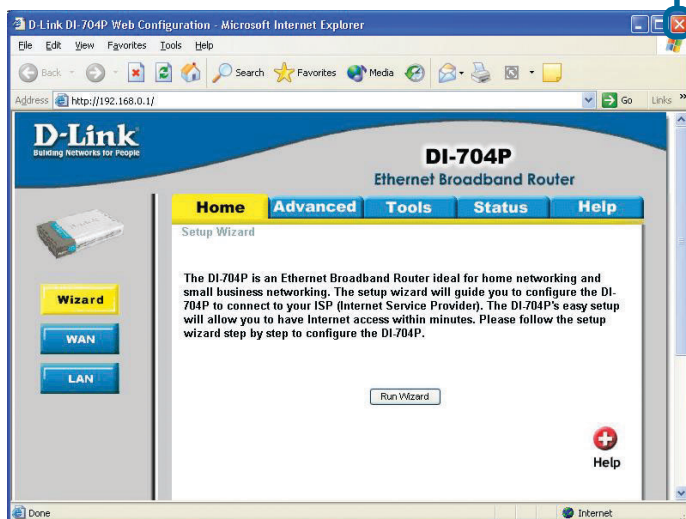
Test Internet Connection.

You will be returned to the **Home** tab.

Click to **Exit**

Then **relaunch** your Web browser (i.e., *Internet Explorer* or *Netscape Navigator*), to link to your favorite Web site to test your Internet connection.

For additional settings or information, refer to the **Advanced**, **Tools**, or **Status** tabs on the web-management interface; or to the Manual located on the CD.



APPENDIX

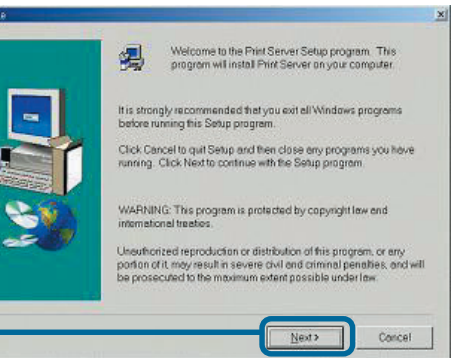
Installing the Print Server Software

Insert the installation CD-ROM into the CD-ROM drive. The following window will be shown automatically. If it is not, please run “autorun.exe” on the CD-ROM.

Click **Install Windows Printer Software**

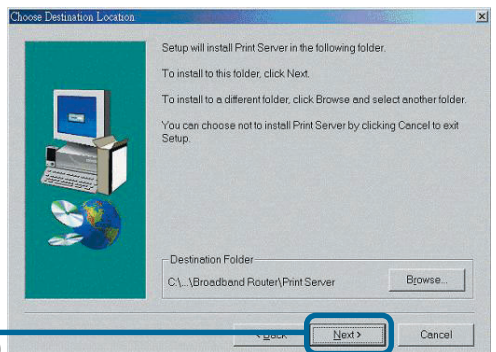


Select your Windows operating system



Click **Next**

Select the destination folder.



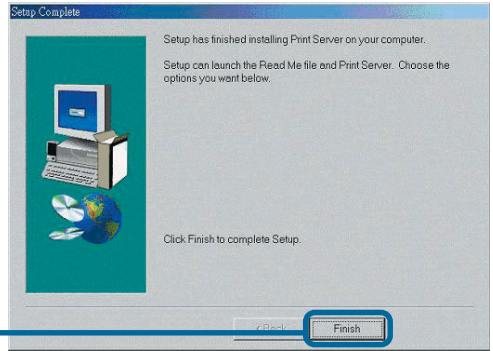
Click **Next**

Installing the Print Server Software (continued)

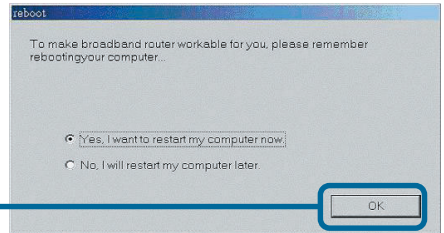
Then, the setup program will begin to install the programs into the destination folder.

When the following window is displayed.

Click **Finish**



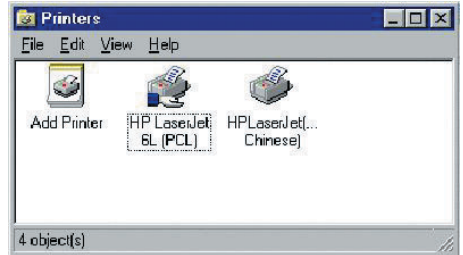
Click **OK**



After rebooting your computer, the software installation procedure is finished.

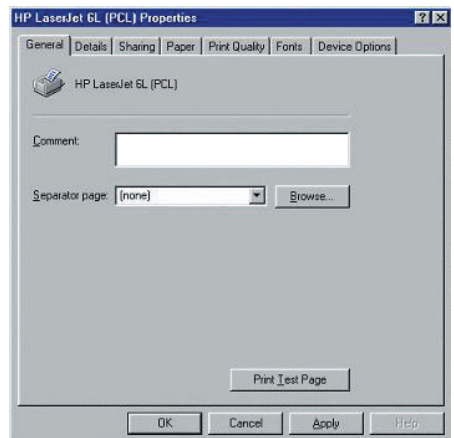
Configuring on Windows 98se/Me Platforms

After you finish the software installation procedure, your computer will be capable of network printing provided by the DI-704P. For convenience, we call the printer connected to the printer port of the DI-704P a *printer server*. On a Windows 95/98 platform, open the **Printers** window in the **My Computer** menu.



Now, you can configure the print server of the DI-704P:

Find out the corresponding icon of your *printer server*, for example, the **HP LaserJet 6L**. Right click on that icon, and then select **Properties**.



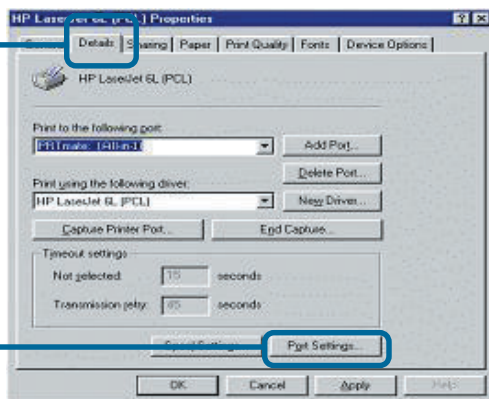
The following screen appears:

Configuring on Windows 98se/Me Platforms (continued)

Click on the **Details** tab

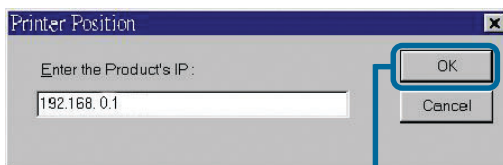
Choose the “PRTmate: (All-in-1)” from the list attached at the **Print To** item. Be sure that the **Printer Driver** item is configured to the correct driver of your *printer server*.

Click **Port Settings**



Type in the IP address of the DI-704P.

Click **OK**

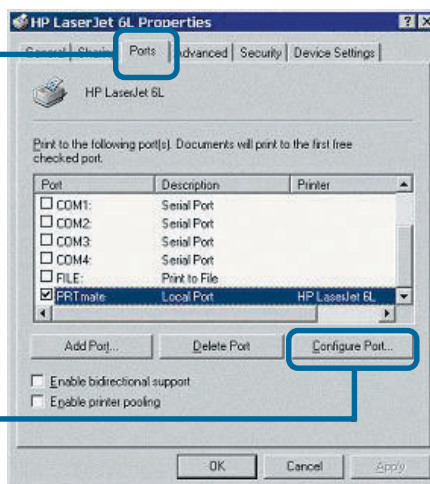


Configuring on Windows 2000/XP Platforms

Click **Port**

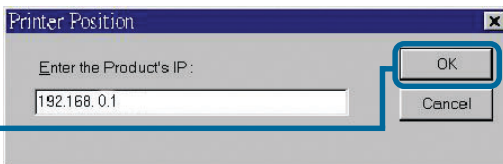
The configuration procedure for a Windows 2000/XP platform is similar to that of Windows 95/98 except the screen of printer **Properties**:

Click **Configure Port**



Type in the IP address of the DI-704P.

Click **OK**



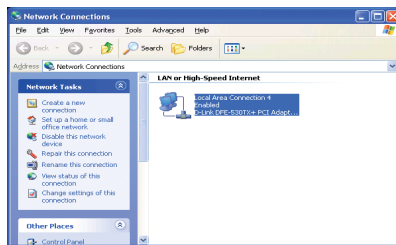
(Note: Screen shots are taken in Windows 2000, similar screens will appear in Windows XP.)

APPENDIX (continued)

To connect to the network, make sure the network adapter in your computer is configured properly. Here's how to configure the network adapter to obtain an IP address automatically for the DI-704P Broadband Router.

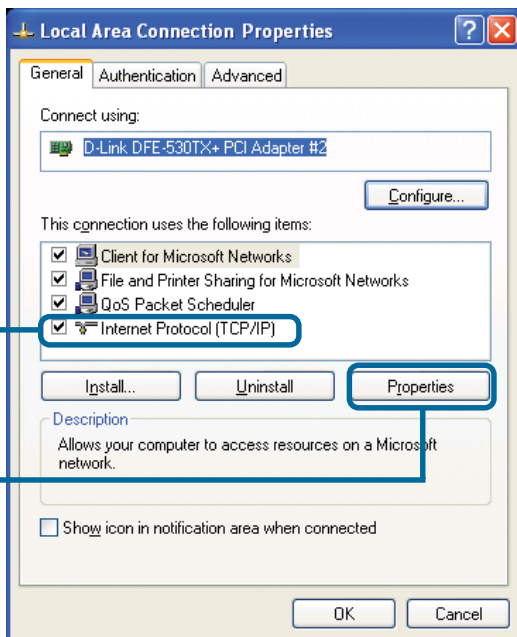
For **Microsoft Windows XP**:

Go to **Start > right click on My Network Places > select Properties > Double-click on the Network Connection** associated with the Ethernet adapter (i.e., D-Link DFE-530TX+).



Click **Internet Protocol (TCP/IP)**

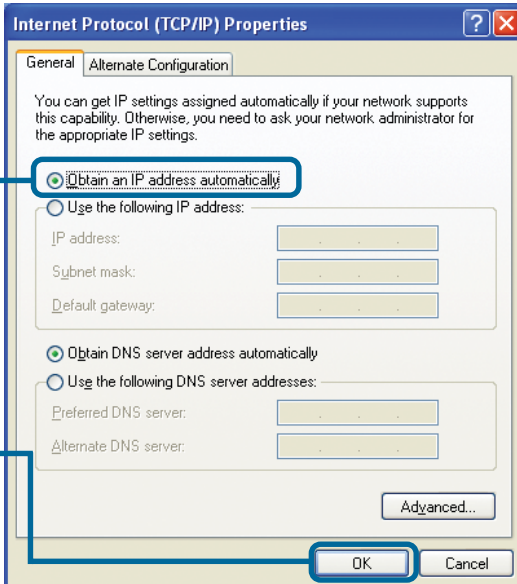
Click **Properties**



Select **Obtain an IP address automatically**

Click **OK**

Restart your computer



For Apple Macintosh OS X:

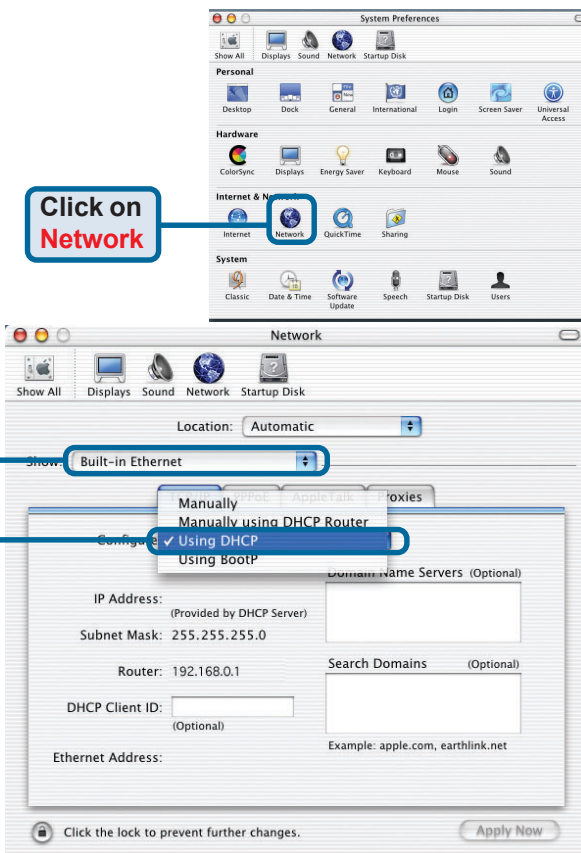
Go to the **Apple Menu**

Click on **Network**
and **Select System**
Preferences

Click on
Network

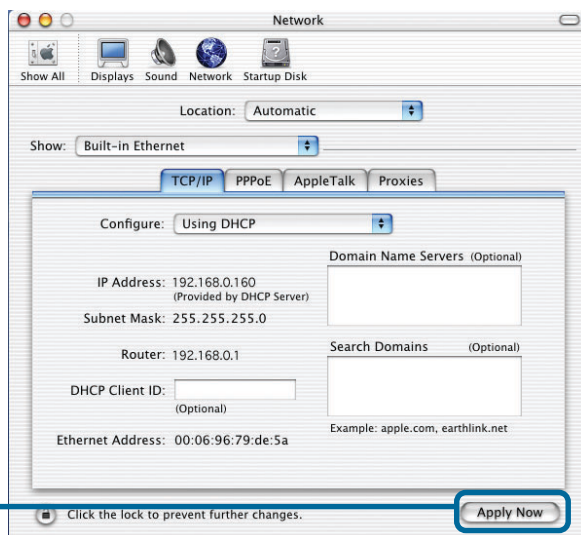
Select **Built-in Ethernet**
in the show pull down
menu

Select **Using DHCP**
in the Configure pull down
menu



Click on **Apply Now**

The IP address information,
the Subnet Mask, the Router's
IP address and the Ethernet
adapter address will appear



Notes

Notes

Technical Support

You can find software updates and user documentation on the D-Link website.

D-Link provides free technical support for customers within the United States and within Canada for the duration of the warranty period on this product.

U.S. and Canadian customers can contact D-Link technical support through our website, or by phone.

Tech Support for customers within the United States:

D-Link Technical Support over the Telephone:

(877) 453-5465

24 hours a day, seven days a week.

D-Link Technical Support over the Internet:

<http://support.dlink.com>

email:support@dlink.com

Tech Support for customers within Canada:

D-Link Technical Support over the Telephone:

(800) 361-5265

Monday to Friday 8:30am to 9:00pm EST

D-Link Technical Support over the Internet:

<http://support.dlink.ca>

email:support@dlink.ca

