

DI-724GU

Release I

Wireless 108G Router

Wireless 108G QoS Gigabit Router
with USB Print Server

Quick Install Guide

Business Class Networking

System Requirements

- Ethernet-based Cable or DSL Modem
- Computers with Windows®, Macintosh®, or Linux-based operating systems with an installed Ethernet adapter
- Internet Explorer 6.x and above, or Netscape® Navigator 7.0 and above

Package Contents



D-Link DI-724GU
Wireless 108G QoS Gigabit Router



CD-ROM with
Manual



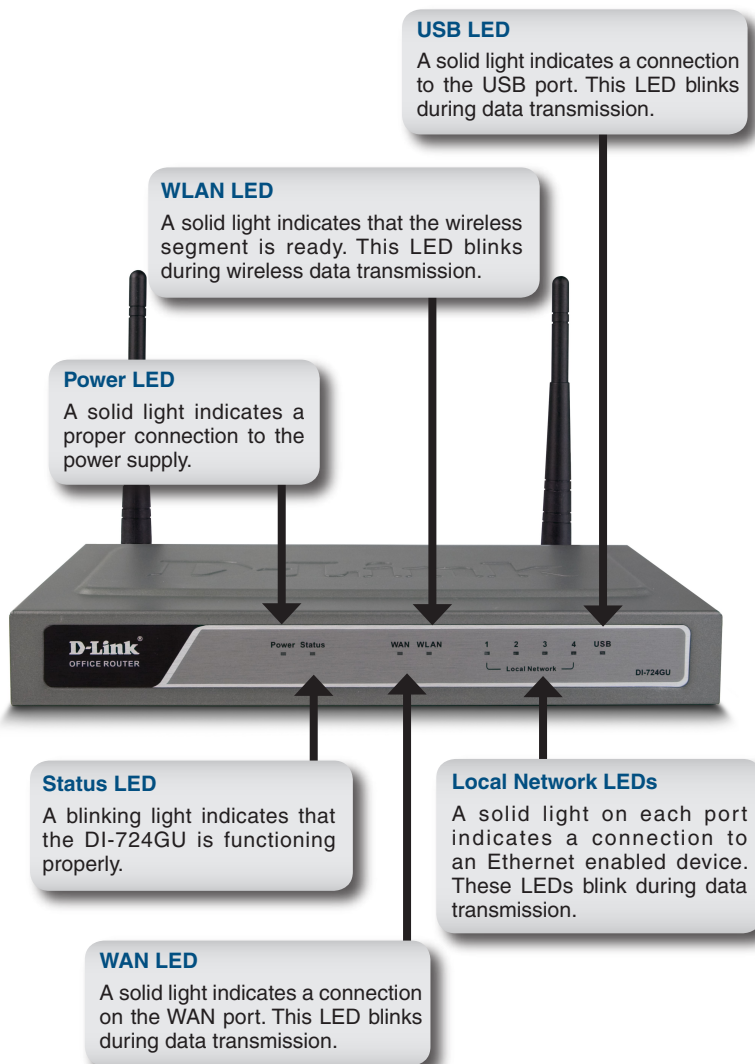
CAT5 Ethernet Cable

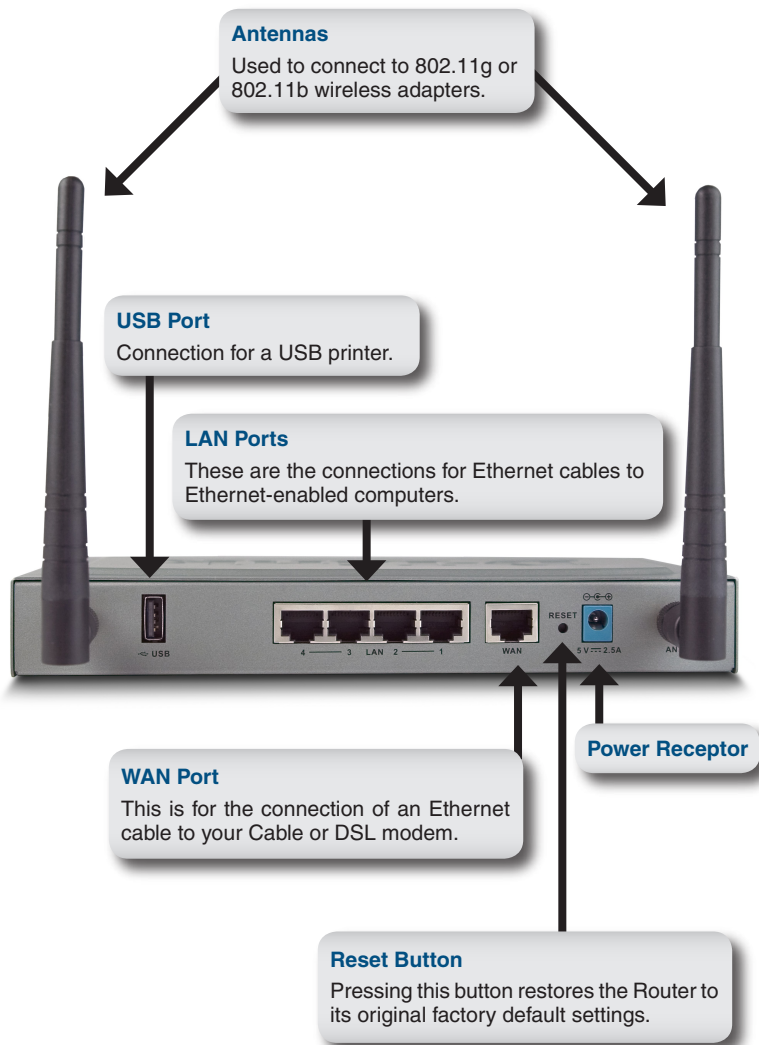


Power Adapter

If any of the above items are missing, please contact your reseller.

Hardware Overview



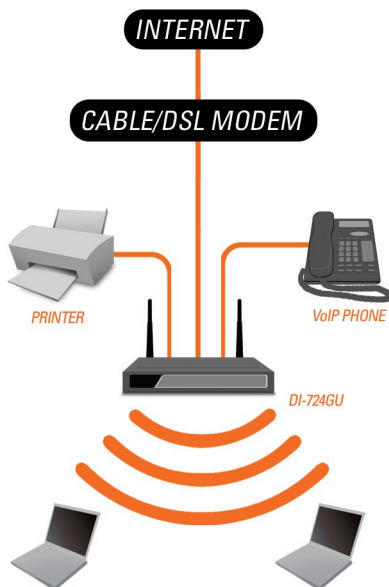


Hardware Installation

- A.** First, connect the power adapter to the receptor at the back panel of the DI-724GU and then plug the other end of the power adapter to a wall outlet or power strip. The Power LED will turn ON to indicate proper operation.
- B.** 1. Power off your Cable or DSL modem; some devices may not have a on/off switch and will require you to unplug the power adapter. Now, the DI-724GU should be powered on and the Cable/DSL modem should be turned off.
2. Cable/DSL modem (**Power Off**) – DI-724GU (**Power On**) Connect an Ethernet cable to the Ethernet jack located on the Cable/DSL modem. After the Ethernet cable is securely connected, power on the Cable/DSL modem by turning on the unit or plugging in the power adapter.
3. Cable/DSL modem (**Power On**) – DI-724GU (**Power On**) Insert the other end of the Ethernet cable to the WAN PORT on the back panel of the DI-724GU. The WAN LED light will illuminate to indicate proper connection. If the WAN LED is not illuminated, please go back to step B1 and repeat the instructions.
- C.** Insert an Ethernet cable to LAN port 1 on the back panel of the DI-724GU and an available Ethernet port on the network adapter in the computer you will use to configure the DI-724GU. The LED light for LAN Port 1 will illuminate to indicate proper connection.
- Note:** *The LAN Ports on the DI-724GU are Auto-MDI/MDIX. Meaning you can use a straight-through or crossover Ethernet cable to the LAN Ports.*
- D.** Computers equipped with 802.11g wireless adapters will be able to connect to the DI-724GU. The DWL-G650 *AirPlus Xtreme G* Wireless Cardbus Adapter and the DWL-G520 *AirPlus Xtreme G* Wireless PCI Adapter will be able to connect out of the box with the router using their default wireless settings.

Getting Started

YOUR NETWORK SETUP

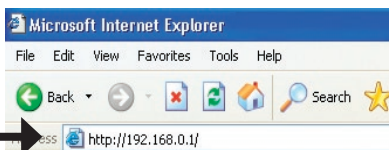


Please remember that **D-Link Wireless 108G** devices are pre-configured to connect together, right out of the box, with their default settings.

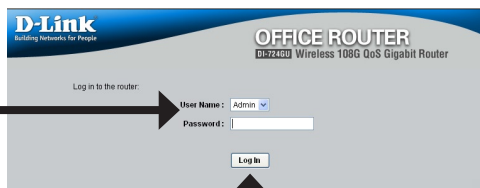
Configuration

This section will show you how to configure your new D-Link Wireless 108G QoS Gigabit Router using the D-Link Setup Wizard.

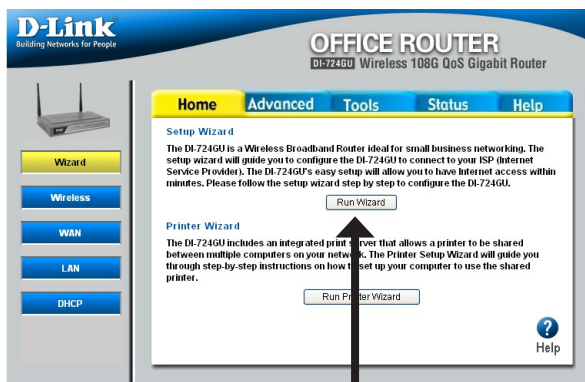
Open your Web browser and type “<http://192.168.0.1>” into the URL address box. Then press the **Enter** or **Return** key.



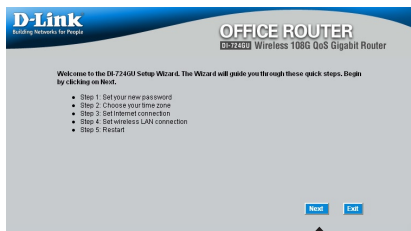
Select “**Admin**” from the User Name drop down menu and leave the password field blank.



Click **Log In**

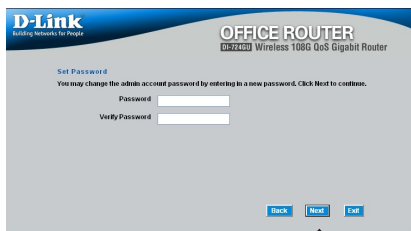


Click **Run Wizard**



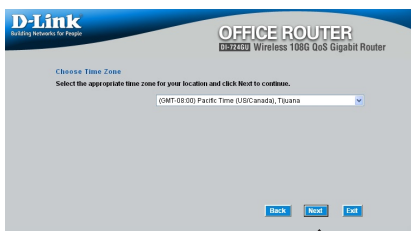
Click **Next**

You have the option to establish a password for the User Name "Admin".



Click **Next**

Choose your time zone from the drop down list.



Click **Next**

Dynamic IP Address

You will be prompted to select the type of Internet connection for your router. If you are unsure of which setting to select, please contact your Internet Service Provider.

Static IP Address - page 10

PPPoE - page 11

PPTP - page 12

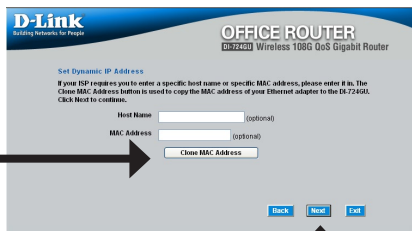
L2TP - page 13

Big Pond - page 14



Click **Next**

If you selected Dynamic IP Address, this screen will appear: (Used mainly for Cable Internet service).



Click the **"Clone MAC Address"** button to automatically copy the MAC address of the network adapter in your computer. You can also manually type in the MAC address.

Click **Next**

Continue to page 15

Static IP Address

If your ISP requires a Static IP Address, please select the corresponding radio button.

D-Link
Building Networks for People

OFFICE ROUTER
DWR-740G Wireless 1080 QoS Gigabit Router

Select Internet Connection Type (WAN)

Select the connection type to connect to your ISP. Click Next to continue.

☐ Dynamic IP Address Choose this option to obtain an IP address automatically from your ISP. (For most Cable modem users)

☒ Static IP Address Choose this option to set static IP information provided to you by your ISP.

☐ PPPoE Choose this option if your ISP uses PPPoE. (For most DSL users)

☐ PPTP PPTP Client

☐ L2TP L2TP Client

☐ BigPond BigPond Cable

Back Next Exit

Click **Next**

Enter the IP address that was originally provided to you by your ISP. You will need to complete all of the required fields.

D-Link
Building Networks for People

OFFICE ROUTER
DWR-740G Wireless 1080 QoS Gigabit Router

Set Static IP Address

Enter in the static IP information provided to you by your ISP. Click Next to continue.

WAN IP Address 0.0.0

Subnet Mask 255.255.255.0

Gateway Address 0.0.0

Primary DNS Address 0.0.0

Secondary DNS Address 0.0.0

Back Next Exit

Click **Next**

Continue to page 15

PPPoE

If your ISP uses PPPoE (Point-to-Point Protocol over Ethernet), select the corresponding radio button.

D-Link
Building Networks For People

OFFICE ROUTER
D-Link Wireless 108G QoS Gigabit Router

Select Internet Connection Type (WAN):
Select the connection type to connect to your ISP. Click Next to continue.

<input type="radio"/> Dynamic IP Address	Choose this option to obtain an IP address automatically from your ISP. (For most Cable Modem users)
<input type="radio"/> Static IP Address	Choose this option to set static IP information provided to you by your ISP.
<input checked="" type="radio"/> PPPoE	Choose this option if your ISP uses PPPoE. (For most DSL users)
<input type="radio"/> PPTP	PPTP Client
<input type="radio"/> L2TP	L2TP Client
<input type="radio"/> BigPond	BigPond Cable

Back Next Exit

Click Next

If you have a Dynamic IP connection, enter the User Name and Password provided to you by your ISP.

D-Link
Building Networks For People

OFFICE ROUTER
D-Link Wireless 108G QoS Gigabit Router

Set PPPoE
The service name is optional but may be required by your ISP. Click Next to continue.

☒ Dynamic IP ☐ Static IP

IP Address: 0.0.0.0

User Name: dlink

Password: *****

Proxy Password: *****

Service Name (optional):

Back Next Exit

Click Next

Note: Please be sure to remove any existing PPPoE client software installed on your computers.

Continue to page 15

PPTP

If your ISP uses PPTP (Point to Point Tunneling Protocol), select the corresponding radio button.

D-Link
Building Networks for People

OFFICE ROUTER
DI-724GU Wireless 108G QoS Gigabit Router

Select Internet Connection Type (WAN)
Select the connection type to connect to your ISP. Click Next to continue.

☐ Dynamic IP Address
Choose this option to obtain an IP address automatically from your ISP. (For most Cable modem users)

☐ Static IP Address
Choose this option to set static IP information provided to you by your ISP.

☐ PPPoE
Choose this option if your ISP uses PPPoE. (For most DSL users)

☒ PPTP
PPTP Client

☐ L2TP
L2TP Client

☐ BigPond Cable
BigPond Cable

Back Next Exit

Click Next

If you have a Dynamic IP connection, enter the Server IP, PPTP Account, and Password provided to you by your ISP.

D-Link
Building Networks for People

OFFICE ROUTER
DI-724GU Wireless 108G QoS Gigabit Router

Set PPTP Client
Please set your PPTP Client data then press Next to continue.

☐ Dynamic IP ☒ Static IP

My IP: 0.0.0

Subnet Mask: 255.255.255.0

Gateway IP Address: 0.0.0

Server IP: 0.0.0

PPTP Account:

Password: *****

Pptp Password: *****

Back Next Exit

Click Next

If you have a Static IP connection, enter the IP Address, Subnet Mask, Gateway IP Address, Server IP, PPTP Account, and Password provided to you by your ISP.

D-Link
Building Networks for People

OFFICE ROUTER
DI-724GU Wireless 108G QoS Gigabit Router

Set PPTP Client
Please set your PPTP Client data then press Next to continue.

☐ Dynamic IP ☒ Static IP

My IP: 0.0.0

Subnet Mask: 255.255.255.0

Gateway IP Address: 0.0.0

Server IP: 0.0.0

PPTP Account:

Password: *****

Pptp Password: *****

Back Next Exit

Click Next

Continue to page 15

L2TP

If your ISP uses L2TP (Layer Two Tunneling Protocol), select the corresponding radio button.

D-Link
Building Networks for People

OFFICE ROUTER
DI-724GU Wireless 108G QoS Gigabit Router

Select Internet Connection Type (WAN)
Select the connection type to connect to your ISP. Click Next to continue.

<input type="radio"/> Dynamic IP Address Choose this option to obtain an IP address automatically from your ISP. (For most Cable modem users)	<input type="radio"/> Static IP Address Choose this option to set static IP information provided to you by your ISP.
<input type="radio"/> PPPoE Choose this option if your ISP uses PPPoE. (For most DSL users)	<input type="radio"/> PPTP Client
<input checked="" type="radio"/> L2TP Client	<input type="radio"/> L2TP Client
<input type="radio"/> Bigpond	<input type="radio"/> Bigpond Cable

Back Next Exit

Click Next

If you have a Dynamic IP connection, enter the L2TP Server IP Address, User Name, and Password provided to you by your ISP.

D-Link
Building Networks for People

OFFICE ROUTER
DI-724GU Wireless 108G QoS Gigabit Router

Set L2TP Client
Please set your L2TP Client data then press Next to continue.

☐ Dynamic IP ☒ Static IP

L2TP IP Address: 0.0.0

L2TP Subnet Mask: 255.255.255.0

L2TP Gateway IP Address: 0.0.0

L2TP Server IP Address (may be same as gateway): 0.0.0

User Name:

Password: ****

Retry Password: ****

Back Next Exit

Click Next

If you have a Static IP connection, enter the L2TP IP Address, Subnet Mask, Gateway IP Address, L2TP Server IP, User Name, and Password provided to you by your ISP.

D-Link
Building Networks for People

OFFICE ROUTER
DI-724GU Wireless 108G QoS Gigabit Router

Set L2TP Client
Please set your L2TP Client data then press Next to continue.

☐ Dynamic IP ☒ Static IP

L2TP IP Address: 0.0.0

L2TP Subnet Mask: 255.255.255.0

L2TP Gateway IP Address: 0.0.0

L2TP Server IP Address (may be same as gateway): 0.0.0

User Name:

Password: ****

Retry Password: ****

Back Next Exit

Click Next

Continue to page 15

Big Pond

Select this option if you connect to the internet through Telstra BigPond Cable Broadband in Australia.

D-Link
Building Networks For People

OFFICE ROUTER
DI-724GU Wireless 108G QoS Gigabit Router

Select Internet Connection Type (WAN)
Select the connection type to connect to your ISP. Click Next to continue.

<input type="radio"/> Dynamic IP Address Choose this option to obtain an IP address automatically from your ISP. (For most Cable modem users.)	<input type="radio"/> Static IP Address Choose this option to set static IP information provided to you by your ISP.
<input type="radio"/> PPPoE Choose this option if your ISP uses PPPoE. (For most DSL users.)	<input type="radio"/> PPTP Client Choose this option if your ISP uses PPTP.
<input type="radio"/> L2TP Choose this option if your ISP uses L2TP.	<input type="radio"/> L2TP Client Choose this option if your ISP uses L2TP.
<input checked="" type="radio"/> BigPond BigPond Cable	

Back Next Exit

Click Next

Enter the User Name, and Password provided to you by your ISP.

D-Link
Building Networks For People

OFFICE ROUTER
DI-724GU Wireless 108G QoS Gigabit Router

Set BigPond
Please set your BigPond Cable data then press Next to continue.

User Name:

Password:

Outgoing Password:

Auth. Server:

Back Next Exit

Click Next

Continue to page 15

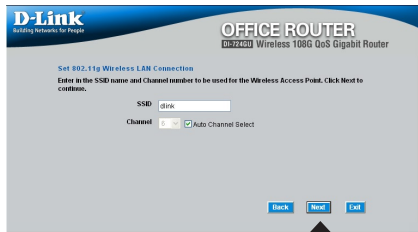
Wireless Setup

The default wireless settings for your 802.11g wireless network are:

SSID = **dlink**

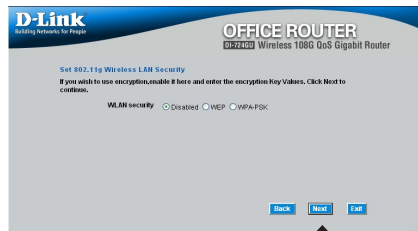
Channel = **6**

You can change these settings to match an existing wireless network.



Click **Next**

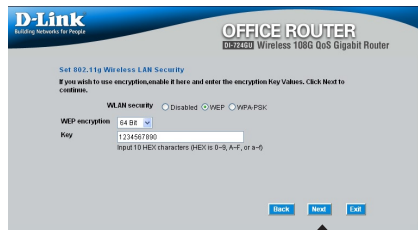
If you wish to use encryption for your 802.11g network, the DI-724GU is capable of two types of wireless encryption WEP and WPA-PSK. By default the encryption is disabled. You can change the encryption settings for more secure wireless communication.



Click **Next**

WEP

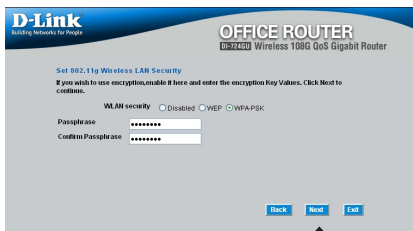
There are two levels of WEP encryption: 64-bit and 128-bit (using only Hexadecimal). You can change the encryption settings for more secure wireless communication.



Click **Next**

WPA-PSK

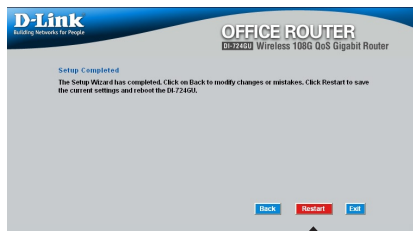
Enter a PassPhrase that is between 8 to 63 characters and is alphanumeric.



The screenshot shows the 'Set 802.11g Wireless LAN Security' screen for a D-Link DI-724GU Office Router. It prompts the user to enter a Passphrase and Confirm Passphrase. The WPA security options are: ☐ Disabled, ☐ WEP, and ☒ WPA-PSK. The Passphrase and Confirm Passphrase fields are masked with asterisks. At the bottom right are buttons for 'Back', 'Next', and 'Exit'.

Click **Next**

Your Setup is Complete!



The screenshot shows the 'Setup Completed' screen for the D-Link DI-724GU Office Router. It states: 'The Setup Wizard has completed. Click on Back to modify changes or mistakes. Click Restart to save the current settings and reboot the DI-724GU.' At the bottom right are buttons for 'Back', 'Restart', and 'Exit'.

Click **Restart**

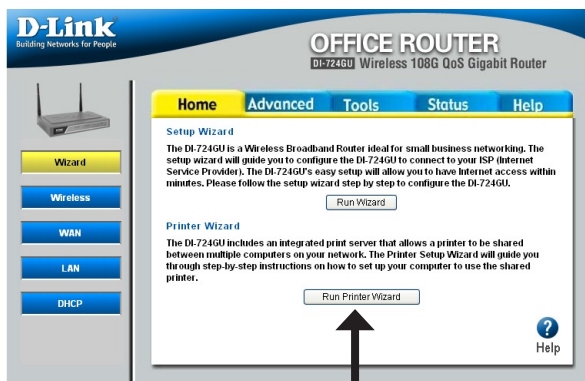
Test Internet Connection

You will be returned to the **Home** tab. Close this web browser window and open a new one (i.e., *Internet Explorer* or *Netscape® Navigator*). Link to your favorite Web site to test your Internet connection.

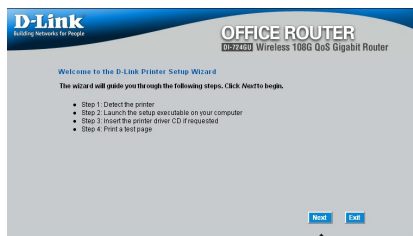
For additional settings or information, refer to the **Advanced**, **Tools**, or **Status** tabs on the web-management interface; or to the Manual located on the CD.

Printer Wizard

Make sure your printer is connected to the USB port on the router.

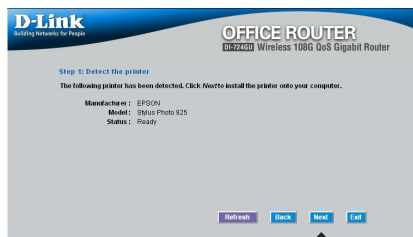


Click **Run Printer Wizard**



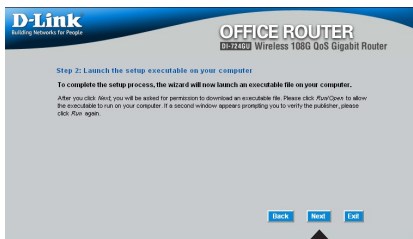
Click **Next**

The wizard will identify the make and model of your printer, as well as its status.



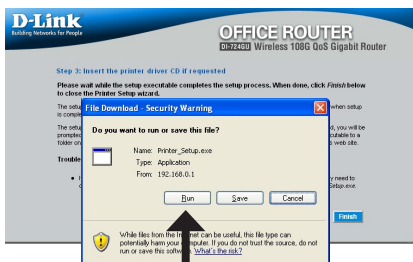
Click **Next**

Click **Next** to run the Printer Setup application.

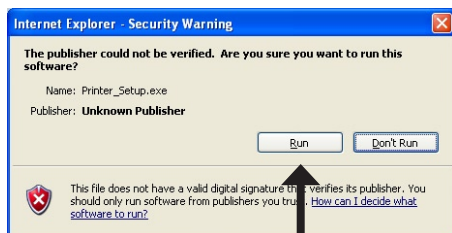


Click **Next**

This application can only run when accessed from the router. Do not click **Save**.



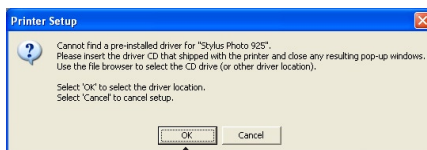
Click **Run**



Click **Run**

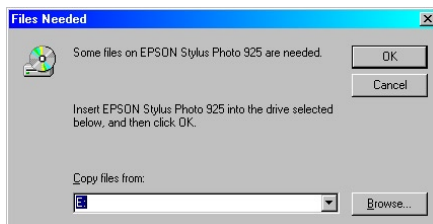


You may need to supply the drivers for your printer if they are not built into Windows®.



Click **OK**

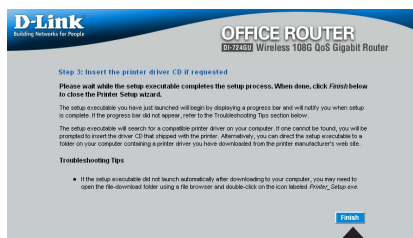
Click **Browse** to locate the driver and then click **OK**.



Once the wizard has completed installing your printer, you will be prompted to print a test page to verify its functionality.



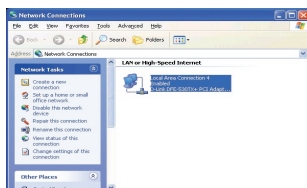
Click **OK**



Click **Finish**

Appendix

To connect to the network, make sure the network adapter in your computer is configured properly. Here's how to configure the network adapter to obtain an IP address automatically for the DI-724GU Wireless Broadband Router.

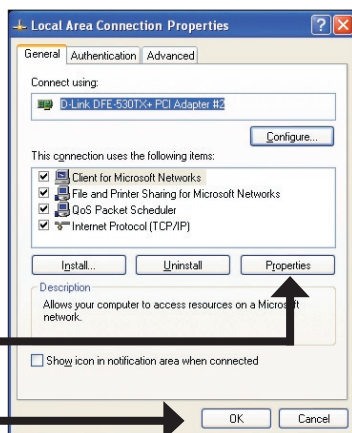


For Microsoft Windows® XP:

Right click on **My Network Places** and select **Properties**. Right click on the **Network Connection** associated with the Ethernet adapter and select **Properties** (i.e., D-Link DFE-530TX+).

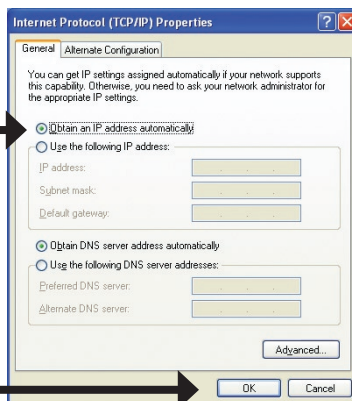
Click **Internet Protocol (TCP/IP)** and then click **Properties**.

Click **OK**



Select **Obtain an IP Address automatically**.

Click **OK**



For Apple Macintosh® OS X:

Go to the **Apple Menu** and click on **System Preferences**, and select **Network**.

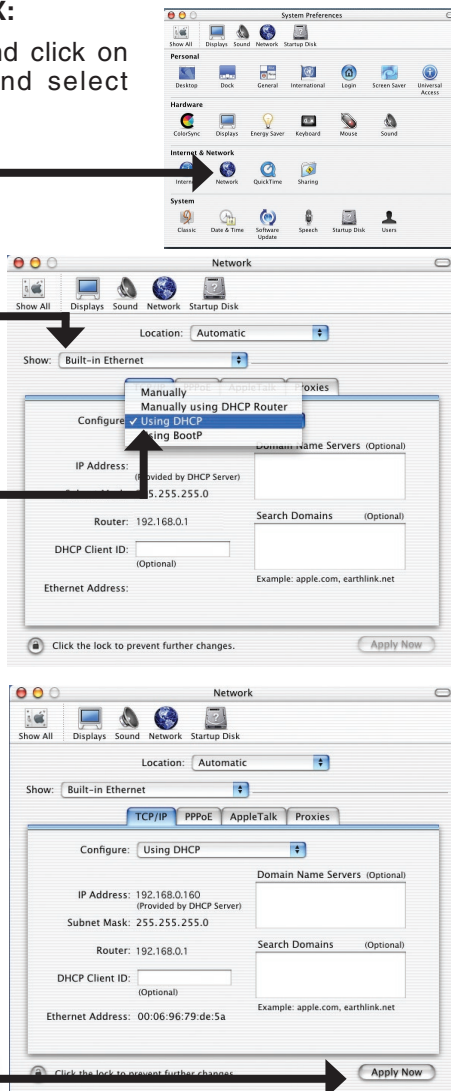
Click **Network**

Select **Built-in Ethernet** in the **Show** pull down menu.

Select **Using DHCP** in the **Configure** pull down menu.

The IP address information, the Subnet Mask, the Router's IP address, and the Ethernet adapter address will appear.

Click **Apply Now** and restart your computer (if necessary).



Notes

Notes

Technical Support

D-Link's website contains the latest user documentation and software updates for D-Link products.

U.S. and Canadian customers can contact D-Link Technical Support through our website or by phone.

United States

Telephone

(877) 453-5465

Twenty four hours a day, seven days a week.

World Wide Web

<http://support.dlink.com>

E-mail

support@dlink.com

Canada

Telephone

(800) 361-5265

Monday through Friday, 7:30am to 9:00pm EST.

World Wide Web

<http://support.dlink.ca>

E-mail

support@dlink.ca



Version 1.0
Revised 03/15/2006

Copyright ©2006 D-Link Corporation/D-Link Systems, Inc. All rights reserved. D-Link and the D-Link logo are registered trademarks of D-Link Corporation or its subsidiaries in the United States and other countries. Other trademarks are the property of their respective owners. Maximum wireless signal rate based on IEEE Standard 802.11g specifications. Actual data throughput will vary. Network conditions and environmental factors, including volume of network traffic, building materials and construction, and network overhead lower actual data throughput rate. Product specifications, size and shape are subject to change without notice, and actual product appearance may differ from that depicted on the packaging. Visit www.dlink.com for more details.