

# D-Link® Quick Installation Guide

This product can be set up using any current web browser, i.e., Internet Explorer 6 or Netscape Navigator 6.2.3.



**DI-724P**  
AirPlus G 2.4GHz Wireless  
Router with Print server

## Before You Begin

1. If you purchased this router to share your high-speed Internet connection with other computers, you must have either an Ethernet-based Cable or DSL modem with an established Internet account from an Internet Service Provider (ISP).
2. It's best to use the same computer that is connected to your modem for configuring the DI-724P Multimode Wireless Router. The DI-724P acts as a DHCP server and will assign all the necessary IP address information on your network. **See Appendix at the end of this Quick Installation Guide or the Manual on the CD-ROM for setting each network adapter to automatically obtain an IP address.**

## Check Your Package Contents



**DI-724P AirPlus G 2.4GHz Wireless Router**



**CD-ROM (containing Manual and Warranty)**



**Ethernet (Straight Through) Cable**



**5V DC Power Adapter**



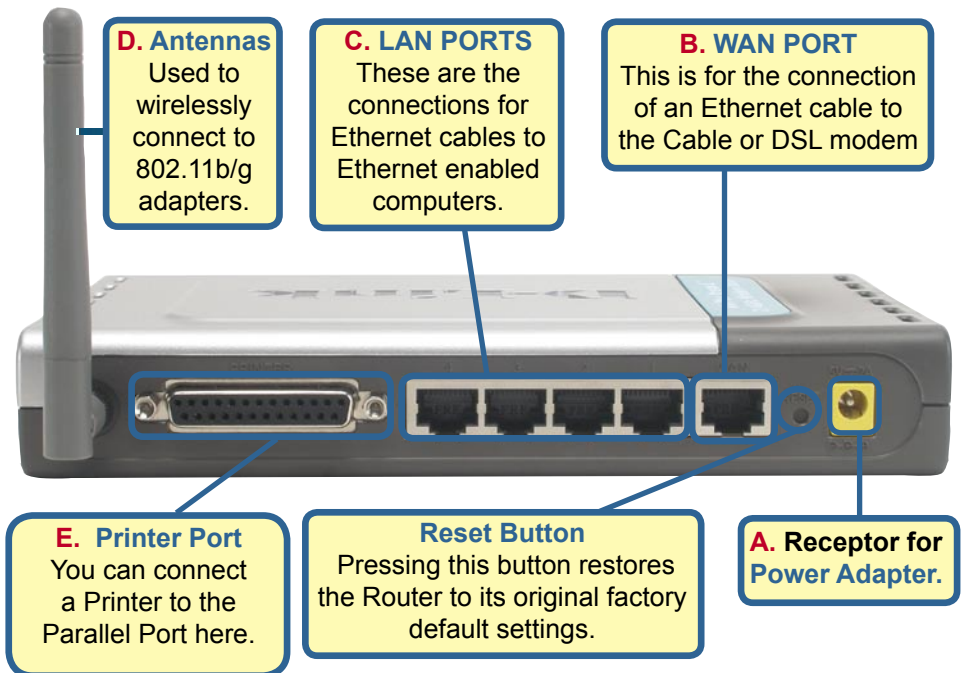
Using a power supply with a different voltage rating will damage and void the warranty of this product.

If any of the above items are missing, please contact your reseller.

# 1

## Connecting The DI-724P Wireless Router To Your Network

- A.** First, connect the power adapter to the **receptor** at the back panel of the DI-724P and then plug the other end of the power adapter to a wall outlet or power strip. The Power LED will turn **ON** to indicate proper operation.
- B.** Insert one end of an Ethernet cable to the **WAN port** on the back panel of the DI-724P and the other end to the Ethernet port located on your Cable or DSL modem. The WAN LED light will illuminate to indicate proper connection.
- C.** Insert an Ethernet cable to **LAN port 1** on the back panel of the DI-724P and an available Ethernet port on the network adapter in the computer you will use to configure the DI-724P. The LED light for LAN Port 1 will illuminate to indicate proper connection. (Note: The WAN Port and LAN Ports on the DI-724P are Auto-MDI/MDIX. Meaning you can use a straight-through or crossover-cable to the WAN Port and LAN Ports.
- D.** Computers equipped with 802.11b/g wireless adapters will be able to connect to the DI-724P. The DWL-G650 AirPlus G Wireless Cardbus Adapter and the DWL-G520 AirPlus G Wireless PCI Adapter will be able to connect out of the box with the router using their default wireless settings.



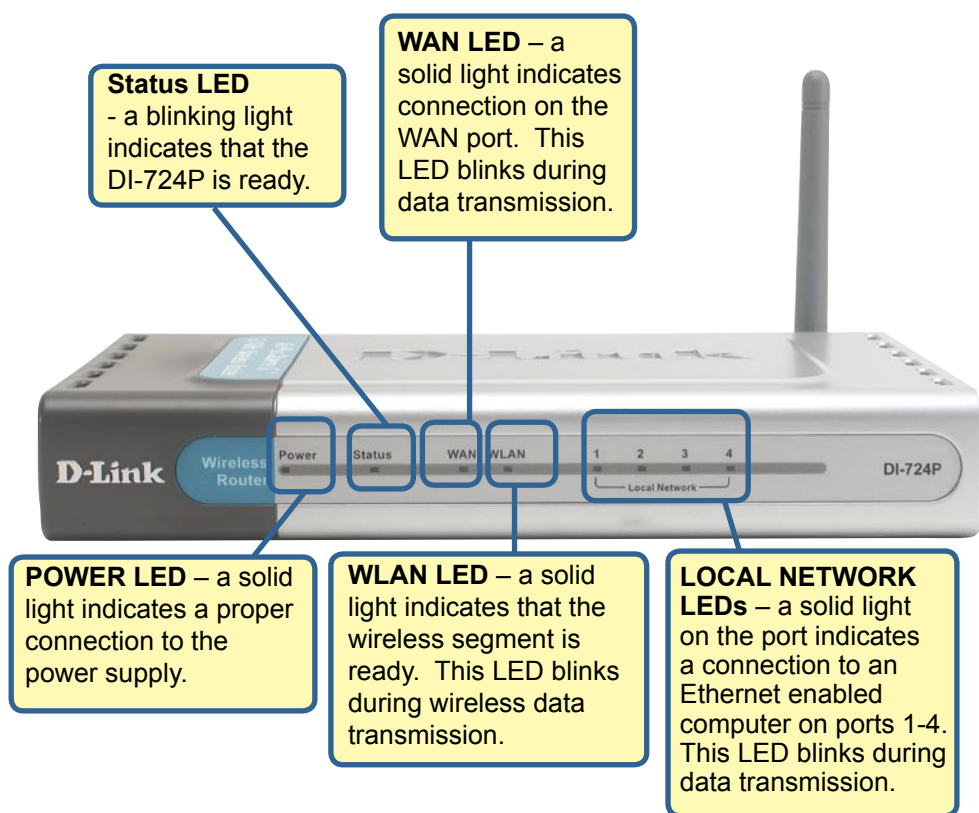
**2**

## Restart Your Computer

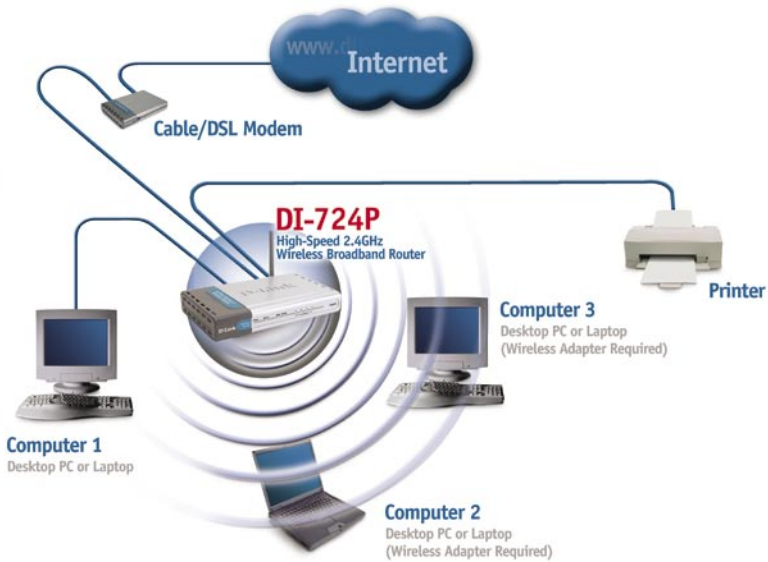
**3**

## Connecting Additional Computers To The DI-724P

Using additional Ethernet (CAT5 UTP) cables, connect your Ethernet-equipped computers to the remaining Ethernet LAN ports on the back panel of the DI-724P.



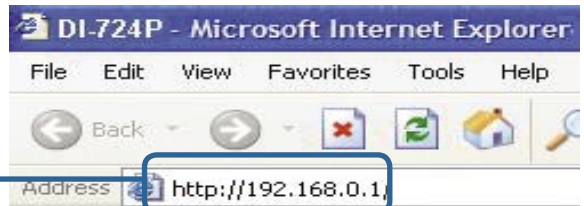
When you have completed the steps in this *Quick Installation Guide*, your connected network should look similar to this:



## 4

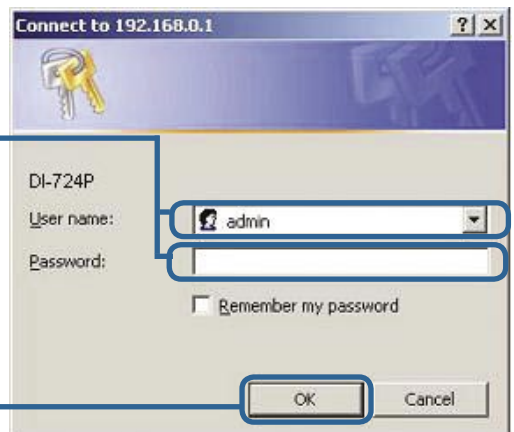
## Using The Setup Wizard

Open your Web browser and type “**http://192.168.0.1**” into the URL address box. Then press the **Enter** or **Return** key.



The logon pop-up screen will appear.

Type “**admin**” for the username and leave the password field blank.

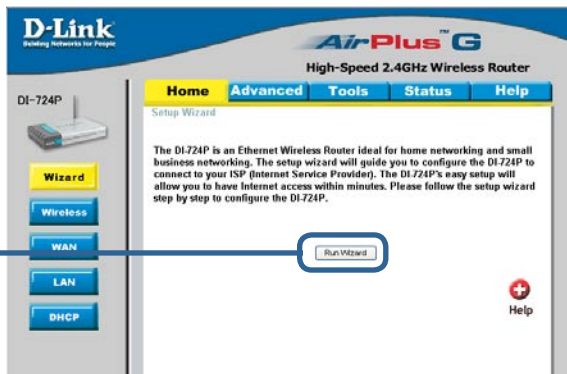


Click **OK**

# 4

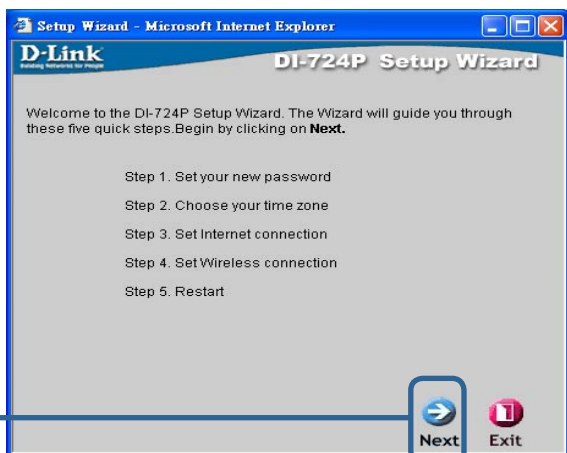
## The Setup Wizard (continued)

Once you have logged in, the **Home** screen will appear.



Click **Run Wizard**

You will see the following screens



Click **Next**

**Set up your new password.**

You have the option to establish a password.

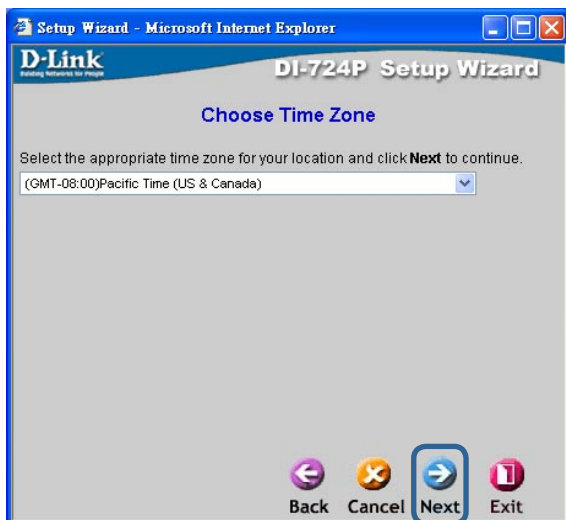


Click **Next**

# 4

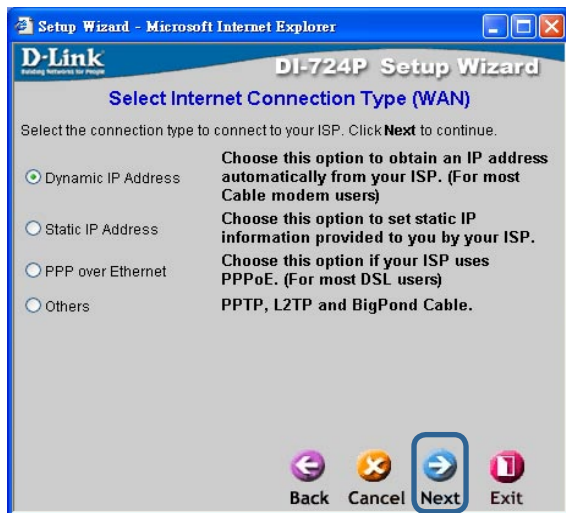
## The Setup Wizard (continued)

Choose your time zone from the drop down list.



Click **Next**

**Select your Internet Connection.** You will be prompted to select the type of Internet connection for your router.



Click **Next**

**!** If you are unsure of which setting to select, please contact your Internet Service Provider.

# 4

## The Setup Wizard (continued)

If you selected **Dynamic IP Address**, this screen will appear: (Used mainly for Cable Internet service.)

Click the **"Clone MAC Address"** button to automatically copy the MAC address of the network adapter in your computer. You can also manually type in the MAC address.

**What is a MAC address?** Each network adapter has a discrete Media Access Control (MAC) address. Note that some computers and peripherals may already include built-in network adapters.

Click **Next**

If your ISP requires a **Static IP Address**, and this option is selected, then this screen will appear:

Enter the IP address information originally provided to you by your ISP. You will need to complete all the required fields.

Click **Next**



# 4

## The Setup Wizard (continued)

If your ISP uses **PPPoE** (Point-to-Point Protocol over Ethernet), and this option is selected, then this screen will appear: (Used mainly for DSL Internet service.)

Please be sure to remove any existing PPPoE client software installed on your computers.

Enter in the username and password provided to you by your ISP.

Setup Wizard - Microsoft Internet Explorer

**D-Link**  
Simplifying Networks for People

**DI-724P Setup Wizard**

**Set PPPoE**

The service name is optional but may be required by your ISP. Click **Next** to continue.

PPPoE Username

PPPoE Password

Retype Password

PPPoE Service Name  (optional)

Back Cancel **Next** Exit

Click **Next**

### Wireless Setup.

The default wireless settings for your 802.11g wireless network are:

SSID = **default**

Channel = **6**

You can change these settings to match an existing wireless network.

Setup Wizard - Microsoft Internet Explorer

**D-Link**  
Simplifying Networks for People

**DI-724P Setup Wizard**

**Set Wireless connection**

Enter in the SSID name and Channel number to be used for the Wireless Access Point. Click **Next** to continue.

Network ID (SSID)

Channel  WEP Encryption

WEP Key

Back Cancel **Next** Exit

Click **Next**



## 4

## The Setup Wizard (continued)

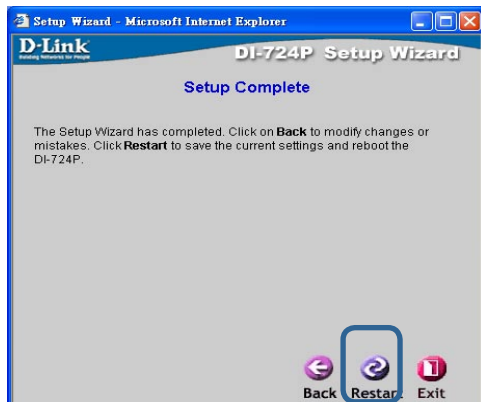
If you wish to use encryption for your 802.11b/g network, the DI-724P is capable of three levels of wireless encryption - 64-bit, 128-bit and 256-bit. **By default the encryption is disabled.** You can change the encryption settings for more secure wireless communication.



Click **Next**

## 5

## Your Setup is Complete!



Click **Restart**



Click **Continue**

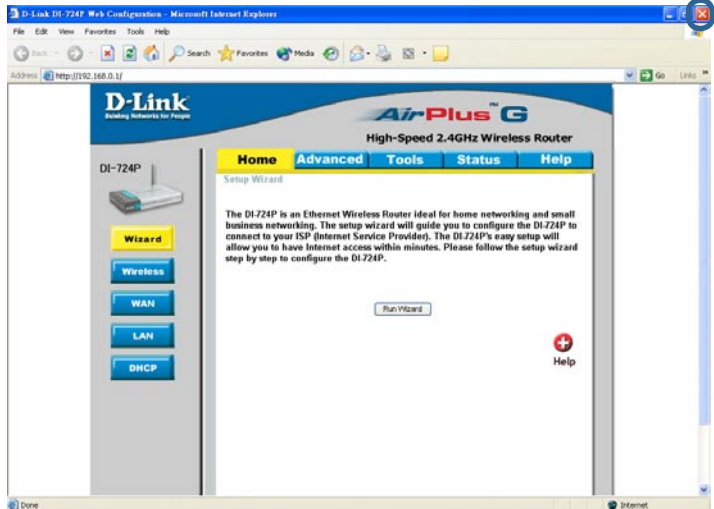
# Test Internet Connection.

You will be returned to the **Home** tab.

Click to **Exit**

Then **relaunch** your Web browser (i.e., *Internet Explorer* or *Netscape Navigator*), to link to your favorite Web site to test your Internet connection.

For additional settings or information, refer to the **Advanced**, **Tools**, or **Status** tabs on the web-management interface; or to the Manual located on the CD.

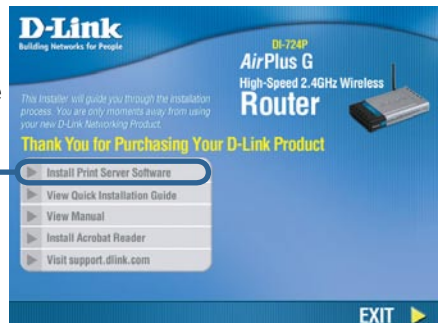


## APPENDIX

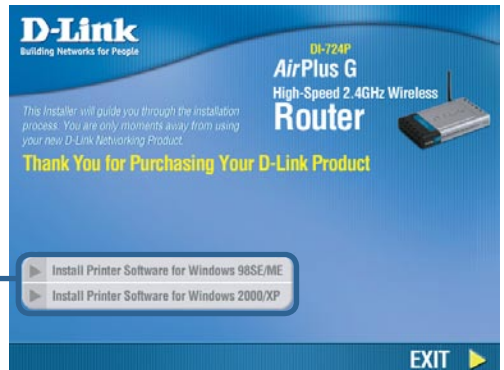
### Installing the Print Server Software

Insert the installation CD-ROM into the CD-ROM drive. The following window will be shown automatically. If it is not, please run “autorun.exe” on the CD-ROM.

Click **Install Print Server Software**



Select your Windows operating system



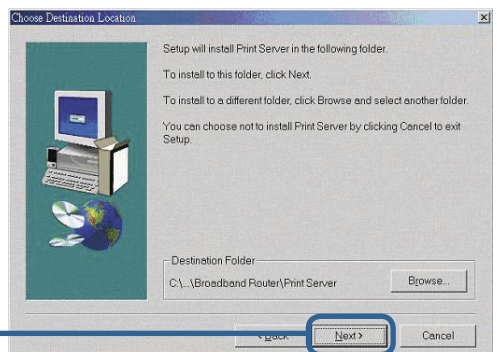
Wait until the following **Welcome** dialog appears.

Click **Next**



Select the destination folder.

Click **Next**

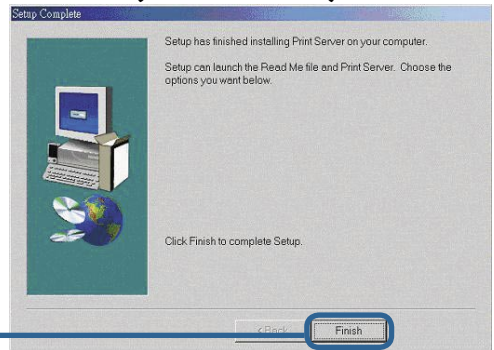


# Installing the Print Server Software (continued)

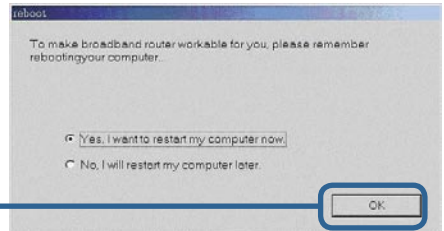
Then, the setup program will begin to install the programs into the destination folder.

When the following window is displayed.

Click **Finish**



Click **OK**



After rebooting your computer, the software installation procedure is finished.

## Configuring on Windows 98se/Me Platforms

After you finish the software installation procedure, your computer will be capable of network printing provided by the DI-724P. For convenience, we call the printer connected to the printer port of the DI-724P a *printer server*. On a Windows 95/98 platform, open the **Printers** window in the **My Computer** menu.



Now, you can configure the print server of the DI-724P:

Find out the corresponding icon of your *printer server*, for example, the **HP LaserJet 6L**. Right click on that icon, and then select **Properties**.



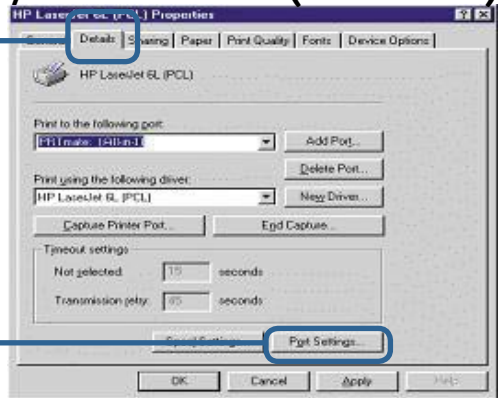
The following screen appears:

# Configuring on Windows 98/Me Platforms (continued)

Click on the  
**Details** tab

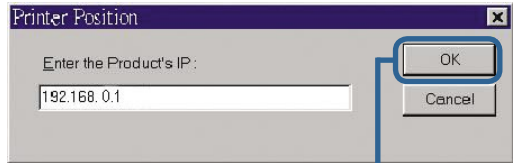
Choose the “PRTmate: (All-in-1)” from the list attached at the **Print To** item. Be sure that the **Printer Driver** item is configured to the correct driver of your *printer server*.

Click **Port Settings**



Type in the IP address of the DI-724P.

Click **OK**

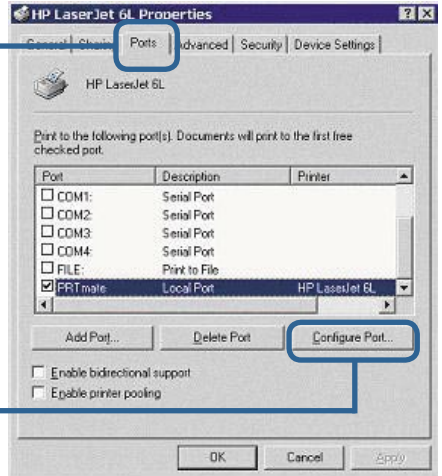


## Configuring on Windows 2000/XP Platforms

Click **Port**

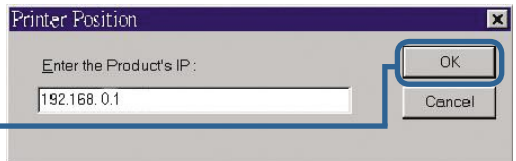
The configuration procedure for a Windows 2000/XP platform is similar to that of Windows 95/98 except the screen of printer **Properties**:

Click **Configure Port**



Type in the IP address of the DI-724P.

Click **OK**



(Note: Screen shots are taken in Windows 2000, similar screens will appear in Windows XP.)

# APPENDIX

To connect to the network, make sure the network adapter in your computer is configured properly. Here's how to configure the network adapter to obtain an IP address automatically for the DI-724P Broadband Router.

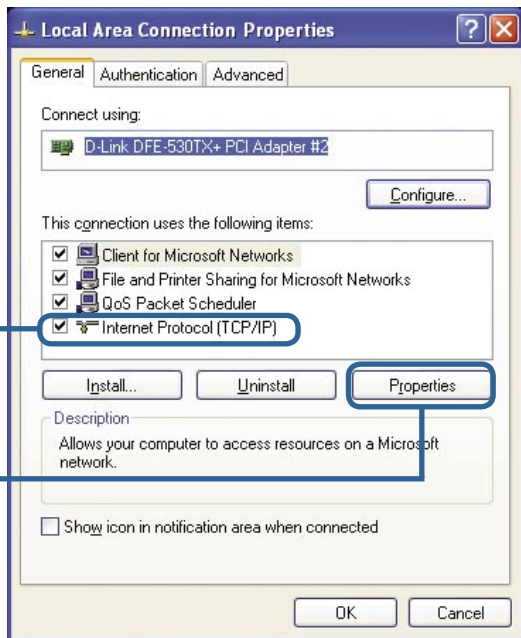
For **Microsoft Windows XP**:

Go to **Start > right click on My Network Places > select Properties > Double-click on the Network Connection** associated with the Ethernet adapter (i.e., D-Link DFE-530TX+).



Click **Internet Protocol (TCP/IP)**

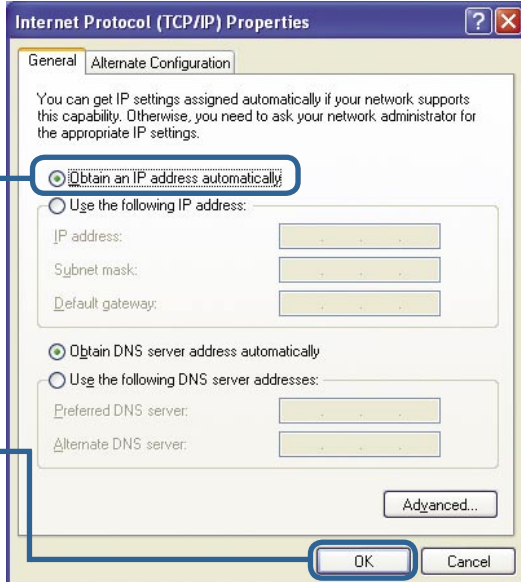
Click **Properties**



Select **Obtain an IP address automatically**

Click **OK**

**Restart** your computer





## For Apple Macintosh OS X:

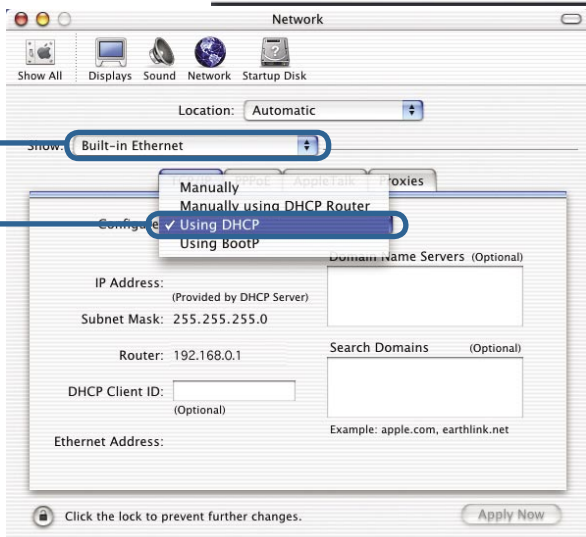
Go to the **Apple Menu** Click on **Network** and Select **System Preferences**

Click on **Network**



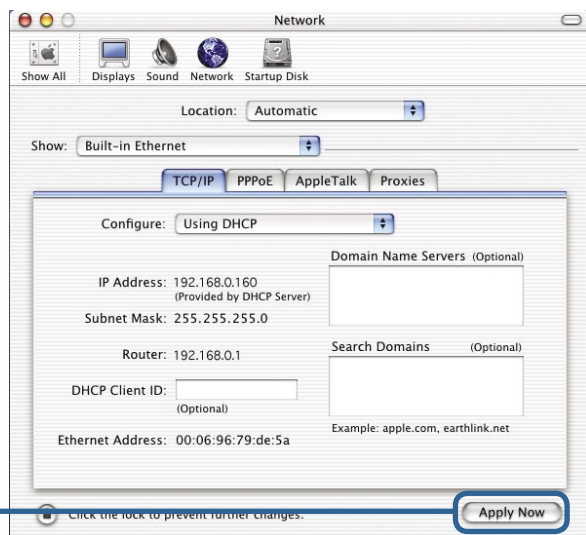
Select **Built-in Ethernet** in the show pull down menu

Select **Using DHCP** in the Configure pull down menu



Click on **Apply Now**

The IP address information, the Subnet Mask, the Router's IP address and the Ethernet adapter address will appear





# Technical Support

You can find software updates and user documentation on the D-Link website.

D-Link provides free technical support for customers within the United States and within Canada for the duration of the warranty period on this product.

U.S. and Canadian customers can contact D-Link technical support through our website, or by phone.

## Tech Support for customers within the United States:

### ***D-Link Technical Support over the Telephone:***

(877) 453-5465

24 hours a day, seven days a week

### ***D-Link Technical Support over the Internet:***

<http://support.dlink.com>

[email:support@dlink.com](mailto:support@dlink.com)

## Tech Support for customers within Canada:

### ***D-Link Technical Support over the Telephone:***

(800) 361-5265

Monday to Friday 7:30am to 12:00am EST

### ***D-Link Technical Support over the Internet:***

<http://support.dlink.ca>

[email:support@dlink.ca](mailto:support@dlink.ca)

## Tech Support for customers within the United Kingdom & Ireland:

### ***D-Link UK & Ireland Technical Support over the Telephone:***

+44 (0)845 612 0003 (United Kingdom)

+353 (0)12 421 061 (Ireland)

Monday to Friday 8:00 am to 10:00 pm

### ***D-Link Technical Support over the Internet:***

<http://www.dlink.co.uk>