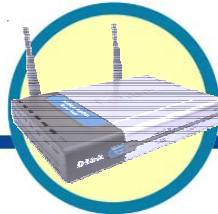


D-Link Quick Installation Guide

This product can be set up using any current web browser, i.e., Internet Explorer 6.0, Netscape Navigator 6.2.3.



DI-764
2.4/5GHz Multimode
Wireless Router

Before You Begin

1. If you purchased this router to share your high-speed Internet connection with other computers, you must have either an Ethernet-based Cable or DSL modem with an established Internet account from an Internet Service Provider (ISP).
2. It's best to use the same computer that is connected to your modem for configuring the DI-764 Multimode Wireless Router. The DI-764 acts as a DHCP Server by default and will assign all the necessary IP address information on your network. **See Appendix at the end of this Quick Installation Guide or the Manual on the CD-ROM for setting each network adapter to automatically obtain an IP address.**

Check Your Package Contents



DI-764 Multimode Wireless Router



CD-ROM (containing Manual and Warranty)



Ethernet (CAT5 UTP/Straight Through) Cable



5V DC, 3A Power Adapter



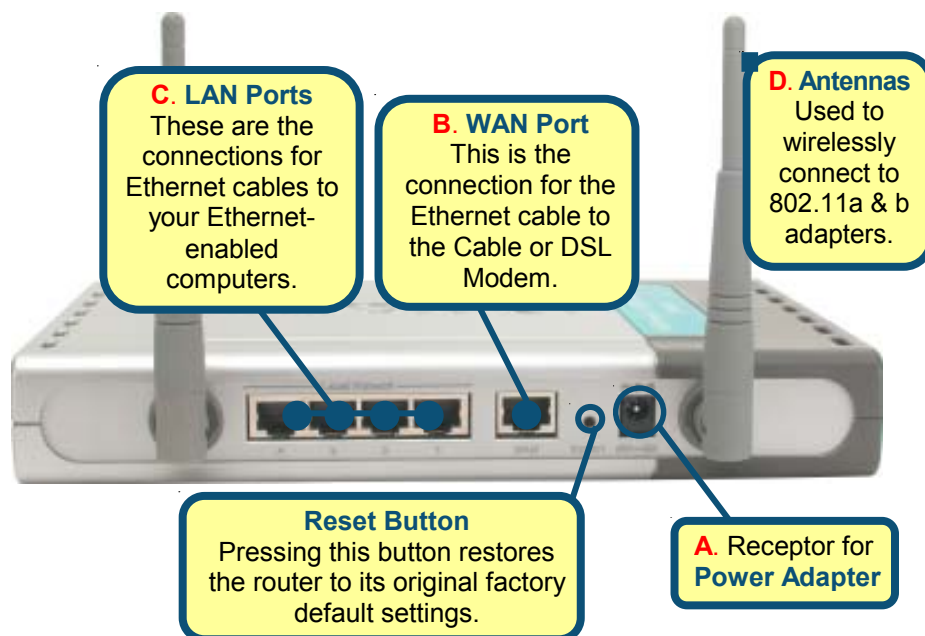
Using a power supply with a different voltage rating will damage and void the warranty for this product.

If any of the above items are missing, please contact your reseller.

1

Connecting The DI-764 Multimode Wireless Router To Your Network

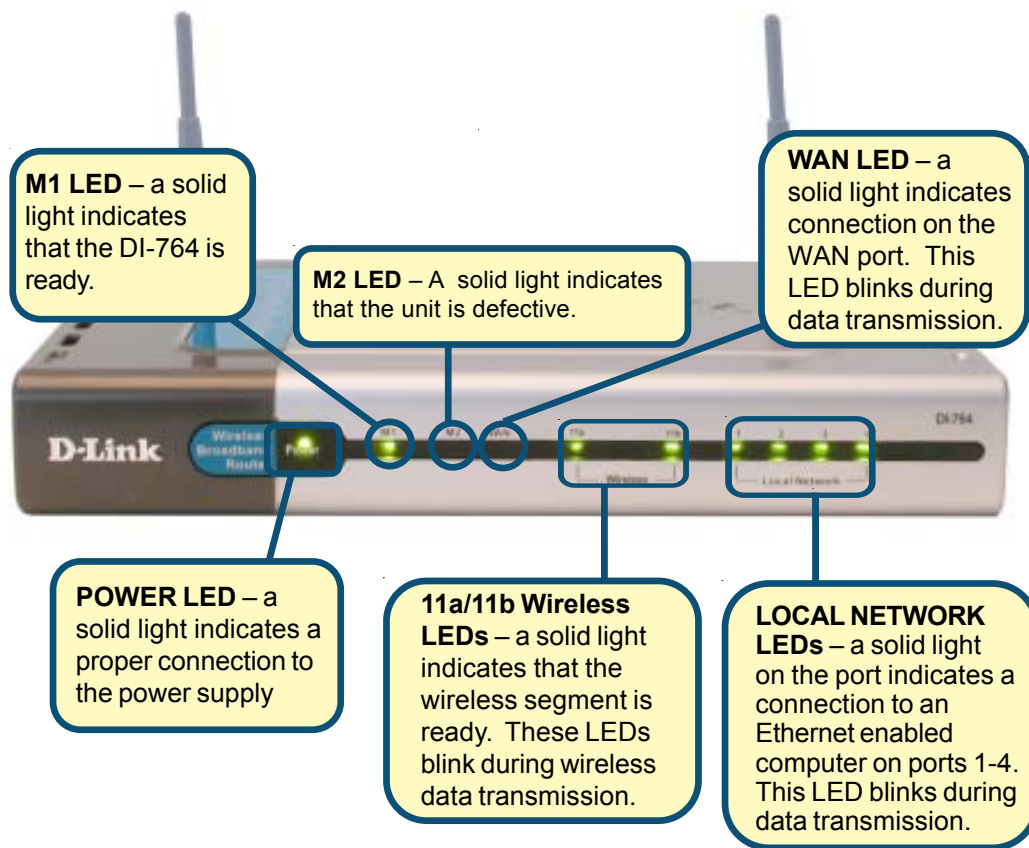
- A.** First, connect the power adapter to the **receptor** at the back panel of the DI-764 and then plug the other end of the power adapter to a wall outlet or power strip. The Power LED will turn **ON** to indicate proper operation.
- B.** Insert one end of an Ethernet cable to the **WAN port** on the back panel of the DI-764 and the other end to the Ethernet port located on your Cable or DSL modem. The WAN LED light will illuminate to indicate proper connection.
- C.** Insert an Ethernet cable to **LAN port 1** on the back panel of the DI-764 and an available Ethernet port on the network adapter in the computer you will use to configure the DI-764. The LED light for LAN Port 1 will illuminate to indicate proper connection. (Note: Some computers already have network adapters pre-installed.)
- D.** Computers equipped with 802.11a wireless adapters will be able to connect to the DI-764. The DWL-A650 *AirPro* Wireless Cardbus Adapter and the DWL-A520 *AirPro* Wireless PCI Adapter will be able to connect out of the box with the router using their default wireless settings. Computers equipped with 802.11b wireless adapters will be able to connect to the DI-764. The DWL-650+ *AirPlus* Wireless Cardbus Adapter and the DWL-520+ *AirPlus* Wireless PCI Adapter will be able to connect out of the box with the router using their default wireless settings.



2 Restart Your Computer

3 Connecting Additional Computers To The DI-764

Using additional Ethernet (CAT5 UTP) cables, connect your Ethernet-equipped computers to the remaining Ethernet LAN ports on the back panel of the DI-764



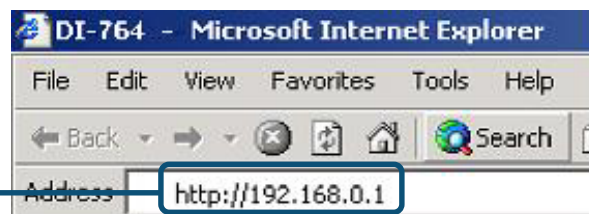
When you have completed the steps in this *Quick Installation Guide*, your connected network should look similar to this:



4

Using The Setup Wizard

Open your Web browser and type **"http://192.168.0.1"** into the URL address box. Then press the **Enter** or **Return** key.



The login pop-up screen will appear.

Type **"admin"** for the username and leave the password field blank.

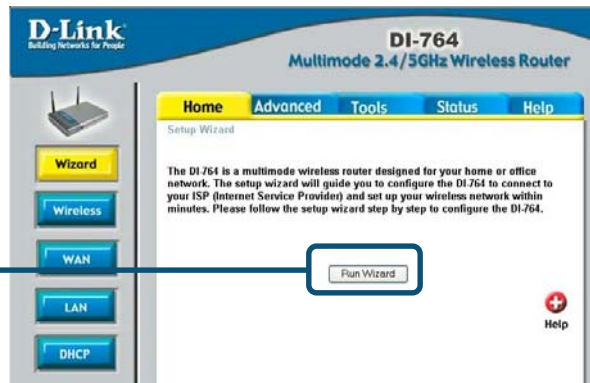


Click **OK**

4 The Setup Wizard (continued)

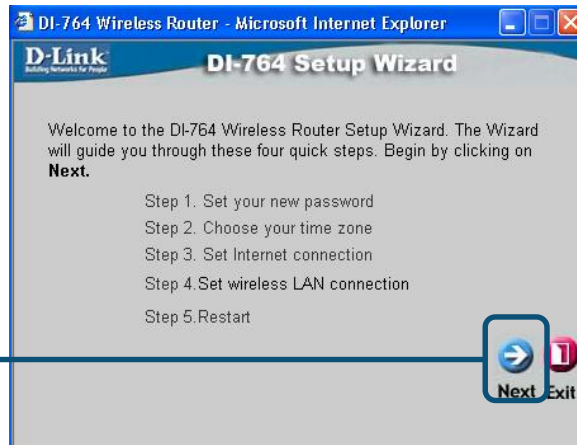
Once you have logged in, the **Home** screen will appear.

Click **Run Wizard**



You will see the following screens

Click **Next**



Step 1 - Set up your new password. You have the option to establish a password.

Click **Next**

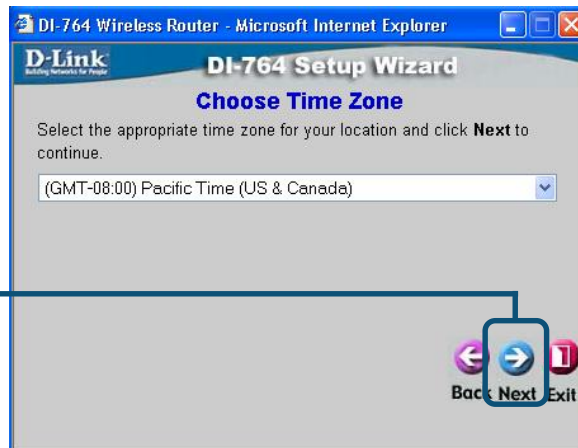


4

The Setup Wizard (continued)

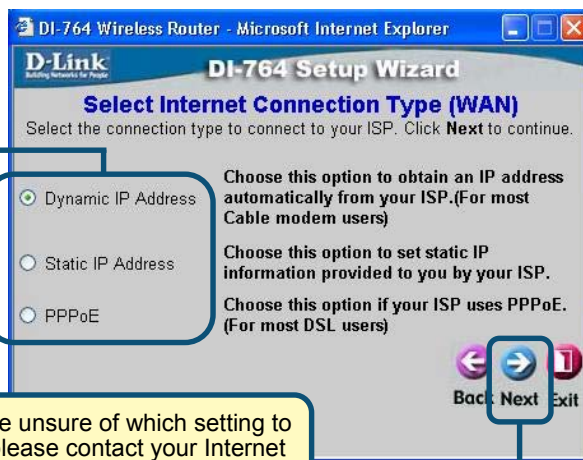
Step 2 - Choose your time zone. You will be prompted to select the your time zone for your router

Click **Next**



Step 3 – Select your Internet Connection. You will be prompted to select the type of Internet connection for your router.

Select one of these settings



If you are unsure of which setting to select, please contact your Internet Service Provider.

Click **Next**

4

The Setup Wizard (continued)

If you selected **Dynamic IP Address**, this screen will appear:

Click the **"Clone MAC Address"** button to automatically copy the MAC address of the network adapter in your computer. You can also manually type in the MAC address.

DI-764 Setup Wizard
Set Dynamic IP Address

If your ISP require you to enter a specific host name or specific MAC address, please enter it in. The **Clone MAC Address** button is used to copy the MAC address of your Ethernet adapter to the DI-764 Wireless Router. Click **Next** to continue.

Host Name: Dual Band Wireless Router (optional)

MAC: 00 - 11 - 22 - 33 - 44 - 56 (optional)

Clone MAC Address

Back Next Exit

What is a MAC address? Each network adapter has a discrete Media Access Control (MAC) address. Note that some computers and peripherals may already include built-in network adapters.

Click **Next**

If your ISP requires a **Static IP Address**, and this option is selected, then this screen will appear:

Enter the IP address information originally provided to you by your ISP. You will need to complete all the required fields.

DI-764 Setup Wizard
Set Static IP Address

Enter in the static IP information provided to you by your ISP. Click **Next** to continue.

WAN IP Address: 0.0.0.0

WAN Subnet Mask: 0.0.0.0

WAN Gateway Address: 0.0.0.0

Primary DNS Address: 0.0.0.0

Secondary DNS Address: 0.0.0.0 (optional)

Back Next Exit

Click **Next**

4

The Setup Wizard (continued)

If your ISP uses **PPPoE** (Point-to-Point Protocol over Ethernet), and this option is selected, then this screen will appear:



Please be sure to remove any existing PPPoE client software installed on your computers.

Enter in the username and password provided to you by your ISP.

Click **Next**

DI-764 Wireless Router - Microsoft Internet Explorer

D-Link Building Networks For People

DI-764 Setup Wizard

Set PPPoE

The service name is optional but may be required by your ISP. Click **Next** to continue.

User Name

Password

Retype Password

Service Name (optional)

Back Next Exit

Step 4 – **Wireless Setup.**

The default wireless settings for your 802.11a wireless network are:

SSID = **default**

Channel = **52**

Turbo Mode = **Off**

Click **Next**

You can change these settings to match an existing wireless network.

Click **Next**

DI-764 Wireless Router - Microsoft Internet Explorer

D-Link Building Networks For People

DI-764 Setup Wizard

Set 802.11a Wireless LAN Connection

Enter in the SSID name and Channel number to be used for the Wireless Access Point. Click **Next** to continue.

SSID

Channel

Turbo Mode ☐ On ☒ Off

Back Next Exit

4

The Setup Wizard (continued)

If you wish to use encryption for your 802.11a network, the DI-764 is capable of three levels of wireless encryption - 64-bit, 128-bit, and 152-bit. **By default the encryption is disabled.** You can change the encryption settings for more secure wireless communication.

Click **Next**

DI-764 Wireless Router - Microsoft Internet Explorer

D-Link **DI-764 Setup Wizard**

Set 802.11a Wireless LAN Connection

If you wish to use encryption, enable it here and enter the encryption Key Values. Click **Next** to continue.

WEP ☐ Enabled ☒ Disabled

Wep encryption 64 bit

Key 0000000000

Input 10 HEX characters (HEX is 0~9, A~F, or a~f)

Back Next Exit

The default wireless settings for your 802.11b wireless network are:
 SSID = **default**
 Channel = **6**
 You can change these settings to match an existing wireless network.

Click **Next**

DI-764 Wireless Router - Microsoft Internet Explorer

D-Link **DI-764 Setup Wizard**

Set 802.11b+ Wireless LAN Connection

Enter in the SSID name and Channel number to be used for the Wireless Access Point. Click **Next** to continue.

SSID default

Channel 6

Back Next Exit

4

The Setup Wizard (continued)

If you wish to use encryption for your 802.11b network, the DI-764 is capable of three levels of wireless encryption - 64-bit, 128-bit, and 256-bit. **By default the encryption is disabled.** You can change the encryption settings for more secure wireless communication.

Click **Next**

The screenshot shows the 'DI-764 Setup Wizard' window in a Microsoft Internet Explorer browser. The title bar reads 'DI-764 Wireless Router - Microsoft Internet Explorer'. The page header includes the D-Link logo and 'DI-764 Setup Wizard'. The main heading is 'Set 802.11b+ Wireless LAN Connection'. Below this, a message states: 'If you wish to use encryption, enable it here and enter the encryption Key Values. Click **Next** to continue.' There are two radio buttons for 'WEP': 'Enabled' (unselected) and 'Disabled' (selected). Below the radio buttons is a 'Wep encryption' dropdown menu set to '64Bit'. A 'Key' input field contains '0000000000'. A note below the key field says 'Input 10 HEX characters (HEX is 0~9, A~F, or a~f)'. At the bottom right, there are three buttons: 'Back' (left arrow), 'Next' (right arrow, highlighted with a blue box), and 'Exit' (red square with an 'X').

5

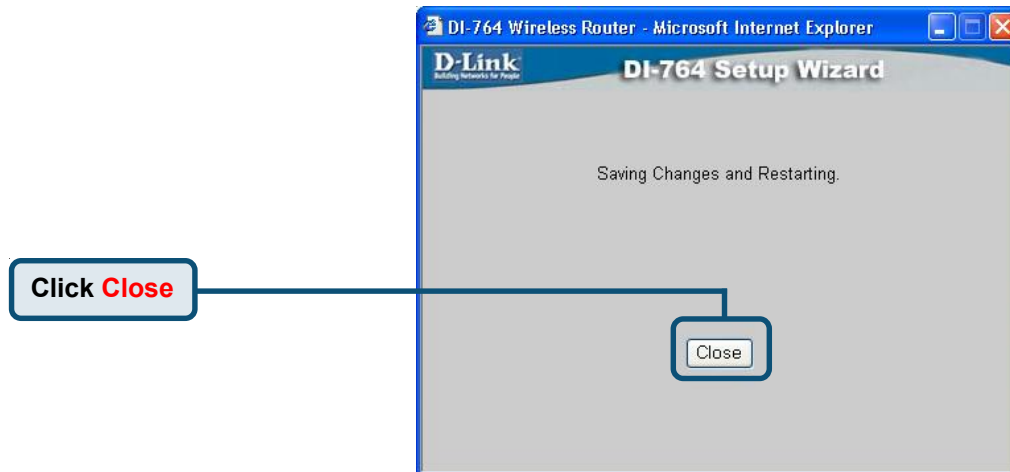
Your Setup is Complete!

Click **Restart**

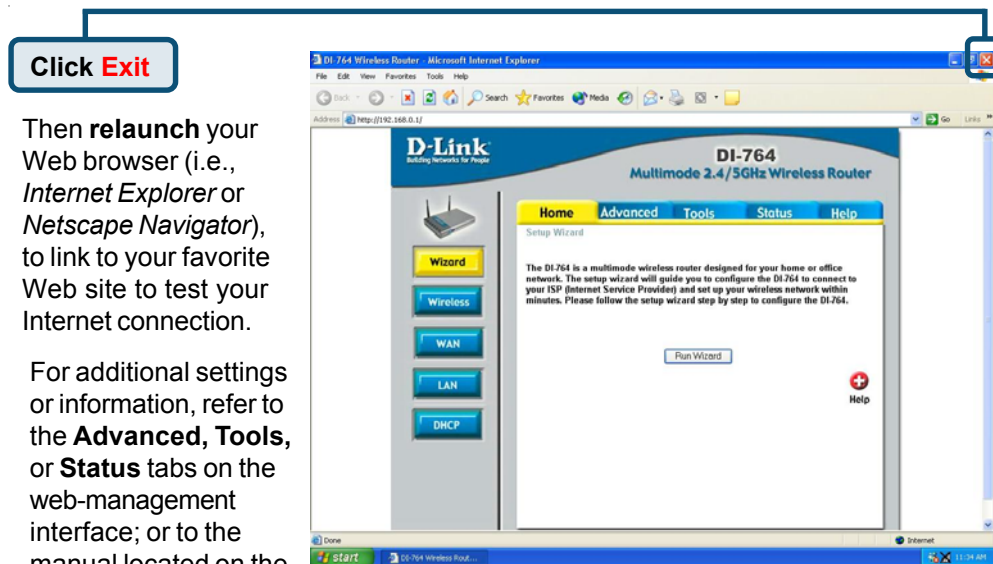
The screenshot shows the 'DI-764 Setup Wizard' window in a Microsoft Internet Explorer browser. The title bar reads 'DI-764 Wireless Router - Microsoft Internet Explorer'. The page header includes the D-Link logo and 'DI-764 Setup Wizard'. The main heading is 'Setup Completed'. Below this, a message states: 'The Setup Wizard has completed. Click on **Back** to modify changes or mistakes. Click **Restart** to save the current settings and reboot the DI-764 Wireless Router.' At the bottom right, there are three buttons: 'Back' (left arrow), 'Restart' (circular arrow, highlighted with a blue box), and 'Exit' (red square with an 'X').

5

Finalize Setup and Test Internet Connection.



You will be returned to the **Home** tab.



Then **relaunch** your Web browser (i.e., *Internet Explorer* or *Netscape Navigator*), to link to your favorite Web site to test your Internet connection.

For additional settings or information, refer to the **Advanced**, **Tools**, or **Status** tabs on the web-management interface; or to the manual located on the CD.

APPENDIX

To connect to the network, make sure the network adapter in your computer is configured properly. Here's how to configure the network adapter to obtain an IP address automatically for the DI-764 Broadband Router.

For **Microsoft Windows XP**:
Go to **Start > right click on My Network Places >**
select **Properties > Double-click** on the **Network Connection** associated with the Ethernet adapter (i.e., D-Link DFE-530TX+).

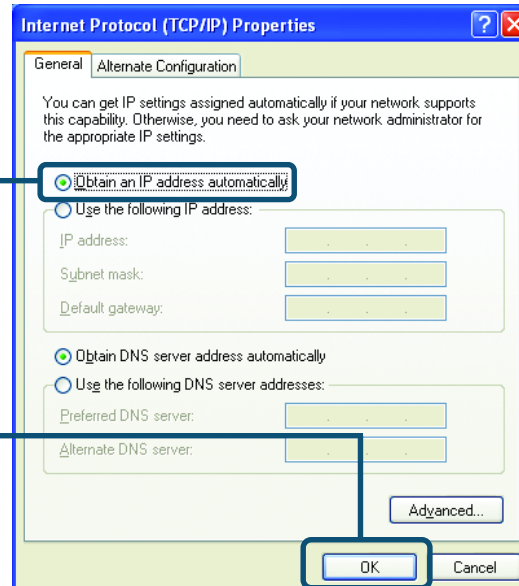
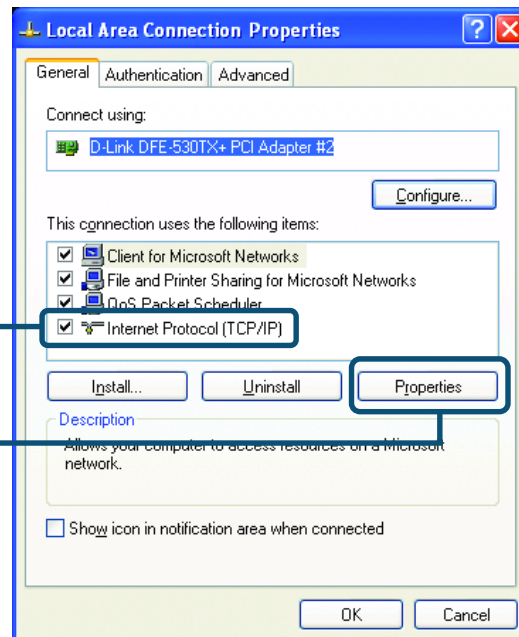
Click **Internet Protocol (TCP/IP)**

Click **Properties**

Select **Obtain an IP address automatically**

Click **OK**

Restart your computer



For **Apple Macintosh OS X**:

Go to the **Apple Menu**
Click on **Network**
and **Select System Preferences**

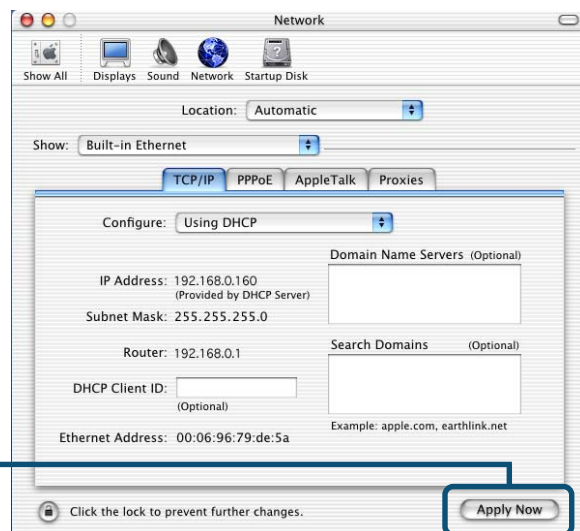
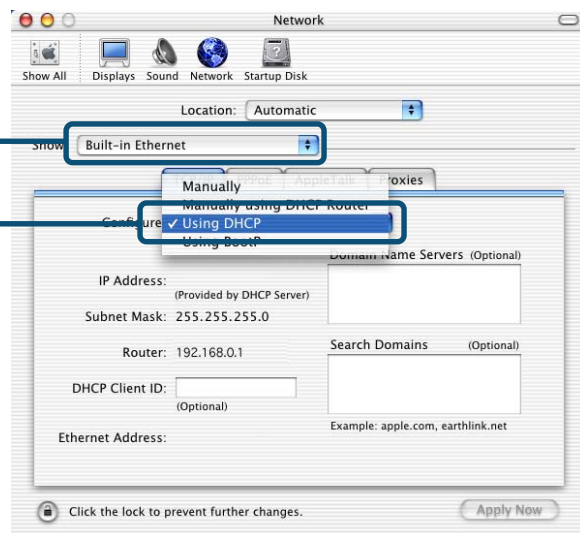
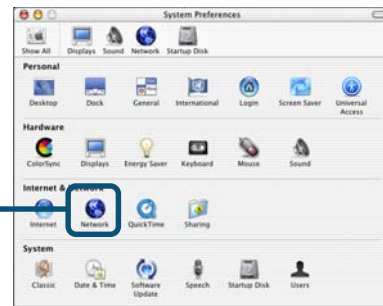
Click on **Network**

Select **Built-in Ethernet** in the Show pull-down menu

Select **Using DHCP** in the Configure pull-down menu

Click on **Apply Now**

The IP address information, the Subnet Mask, the Router's IP address and the Ethernet adapter address will appear



NOTES

NOTES

Technical Support

You can find the most recent software and user documentation on the **D-Link** website.

D-Link provides free technical support for customers within the United States for the duration of the warranty period on this product.

U.S. customers can contact **D-Link** technical support through our web site or by phone.

D-Link Technical Support over the Telephone:

(877) 453-5465

24 hours a day, seven days a week

D-Link Technical Support over the Internet:

<http://support.dlink.com>

email: support@dlink.com

