

QUICK INSTALL GUIDE

DIR-330

VERSION 1.2



D-Link®

WIRELESS

Package Contents

- D-Link DIR-330 Wireless VPN Router
- Power Adapter
- Ethernet Cable
- Manual and Warranty on CD

Note: Using a power supply with a different voltage rating than the one included with the DIR-330 will cause damage and void the warranty for this product.

If any of the above items are missing, please contact your reseller.

System Requirements

Network Requirements

- An Ethernet-based Cable or DSL modem
- 10/100 Ethernet devices
- 802.11g/b wireless clients

Web-based Configuration Utility Requirements

Computer with the following:

- Windows®, Mac OS, or Linux-based operating system
- An installed Ethernet adapter

Browser Requirements:

- Internet Explorer 7.0 or higher
- Firefox 3.0.5 or higher
- Chrome 1.0.154.43 or higher

Make sure that you have the latest version of Java installed. Visit www.java.com to download the latest version.

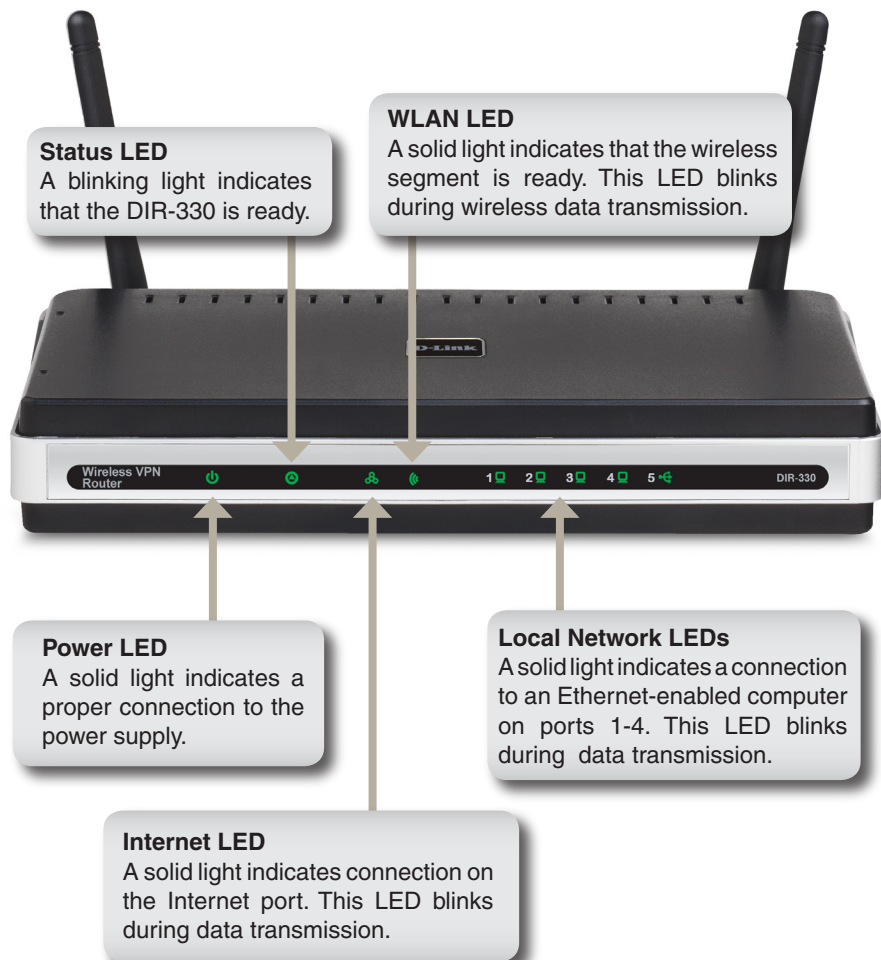
Wireless Considerations

The D-Link wireless router lets you access your network using a wireless connection from virtually anywhere within the operating range of your wireless network. Keep in mind, however, that the number, thickness and location of walls, ceilings, or other objects that the wireless signals must pass through, may limit the range. Typical ranges vary depending on the types of materials and background RF (radio frequency) noise in your home or business. The key to maximizing wireless range is to follow these basic guidelines:

1. Keep the number of walls and ceilings between the D-Link router and other network devices to a minimum. Each wall or ceiling can reduce your adapter's range from 3-90 feet (1-30 meters.) Position your devices so that the number of walls or ceilings is minimized.
2. Be aware of the direct line between network devices. A wall that is 1.5 feet thick (.5 meters), at a 45-degree angle appears to be almost 3 feet (1 meter) thick. At a 2-degree angle it looks over 42 feet (14 meters) thick. Position devices so that the signal will travel straight through a wall or ceiling (instead of at an angle) for better reception.
3. Building Materials make a difference. A solid metal door or aluminum studs may have a negative effect on range. Try to position access points, wireless routers, and computers so that the signal passes through drywall or open doorways. Materials and objects such as glass, steel, metal, walls with insulation, water (fish tanks), mirrors, file cabinets, brick, and concrete will degrade your wireless signal.
4. Keep your product away (at least 3-6 feet or 1-2 meters) from electrical devices or appliances that generate RF noise.
5. If you are using 2.4GHz cordless phones or X-10 (wireless products such as ceiling fans, lights, and home security systems), your wireless connection may degrade dramatically or drop completely. Make sure your 2.4GHz phone base is as far away from your wireless devices as possible. The base transmits a signal even if the phone is not in use.

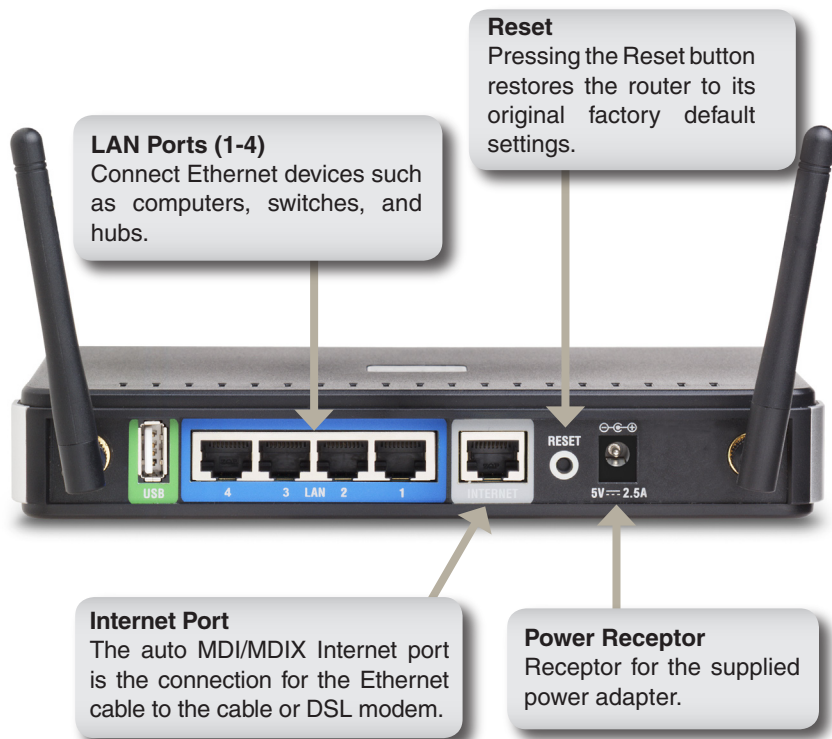
Hardware Overview

LEDs



Hardware Overview

Connections



* The USB port is currently inactive.

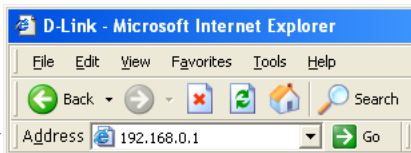
Connect to your Network

If you are connecting the router to a cable/DSL/satellite modem, please follow the steps below:

1. Place the router in an open and central location. Do not plug the power adapter into the router.
2. Turn the power off on your modem. If there is no on/off switch, then unplug the modem's power adapter. Shut down your computer.
3. Unplug the Ethernet cable (that connects your computer to your modem) from your computer and place it into the Internet port on the router.
4. Plug an Ethernet cable into one of the four LAN ports on the router. Plug the other end into the Ethernet port on your computer.
5. Turn on or plug in your modem. Wait for the modem to boot (about 30 seconds).
6. Plug the power adapter to the router and connect to an outlet or power strip. Wait about 30 seconds for the router to boot.
7. Turn on your computer.
8. Verify the link lights on the router. The power light, Internet light, and the LAN light (the port that your computer is plugged into) should be lit. If not, make sure your computer, modem, and router are powered on and verify the cable connections are correct.

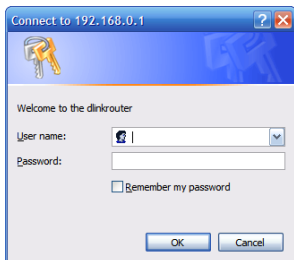
Using the Setup Wizard

Open your web browser and type `http://192.168.0.1` into the URL address box. Press **Enter**.



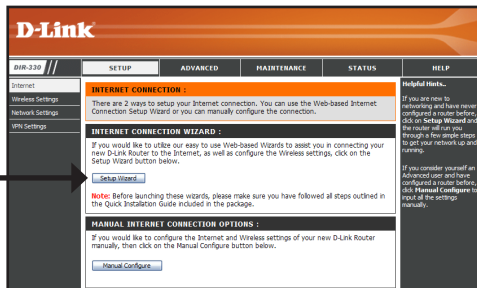
The logon pop-up screen will appear:

Type **admin** for the username and leave the password blank.



Once you have logged in, the Setup screen will appear:

Click **Setup Wizard**



*PPTP, L2TP, Russian PPPoE, and Russian PPTP Internet configurations referenced in this section do not apply in North America.

Click **Next** to continue.

Click **Next**



WELCOME TO THE D-LINK SETUP WIZARD

This wizard will guide you through a step-by-step process to configure your new D-Link router and connect to the Internet.

- Step 1: Set your Password
- Step 2: Select your Time Zone
- Step 3: Configure your Internet Connection
- Step 4: Save Settings and Connect

Next Cancel

Create a new password and then click **Next** to continue.

Click **Next**



STEP 1: SET YOUR PASSWORD

By default, your new D-Link Router does not have a password configured for administrator access to the Web-based configuration pages. To secure your new networking device, please set and verify a password below:

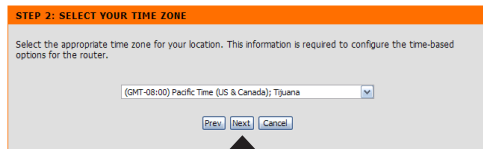
Password :

Verify Password :

Next Cancel

Select your time zone from the drop-down menu and then click **Next** to continue.

Click **Next**



STEP 2: SELECT YOUR TIME ZONE

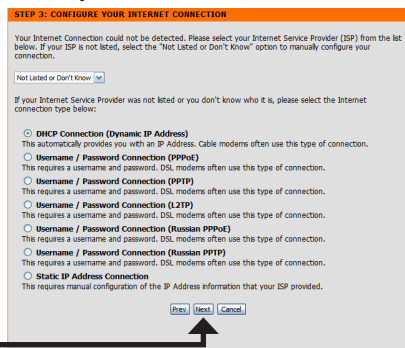
Select the appropriate time zone for your location. This information is required to configure the time-based options for the router.

(GMT-08:00) Pacific Time (US & Canada); Tijuana

Prev **Next** Cancel

Select the type of Internet connection you use and then click **Next** to continue.

Click **Next**



STEP 3: CONFIGURE YOUR INTERNET CONNECTION

Your Internet Connection could not be detected. Please select your Internet Service Provider (ISP) from the list below. If your ISP is not listed, select the 'Not Listed or Don't know' option to manually configure your connection.

Not Listed or Don't know

If your Internet Service Provider was not listed or you don't know who it is, please select the Internet connection type below:

- ☒ **DHCP Connection (Dynamic IP Address)**
This automatically provides you with an IP Address. Cable modems often use this type of connection.
- ☐ **Username / Password Connection (PPPoE)**
This requires a username and password. DSL modems often use this type of connection.
- ☐ **Username / Password Connection (PPPoE)**
This requires a username and password. DSL modems often use this type of connection.
- ☐ **Username / Password Connection (Russian PPPoE)**
This requires a username and password. DSL modems often use this type of connection.
- ☐ **Static IP Address Connection**
This requires manual configuration of the IP Address information that your ISP provided.

Prev **Next** Cancel

If you selected Dynamic, you may need to enter the MAC address of the computer that was last connected directly to your modem. If you are currently using that computer, click **Clone Your PC's MAC Address** and then click **Next** to continue.

The Host Name is optional but may be required by some ISPs. The default host name is the device name of the Router and may be changed.

Click **Next**

DHCP CONNECTION (DYNAMIC IP ADDRESS)

To set up this connection, please make sure that you are connected to the D-Link Router with the PC that was originally connected to your broadband connection. If you are, then click the Clone MAC button to copy your computer's MAC Address to the D-Link Router.

MAC Address : 00 00 00 00 00 00 (Optional)

Host Name : _____

Note: You may also need to provide a Host Name. If you do not have or know this information, please contact your ISP.

If you selected PPPoE, enter your PPPoE username and password. Click **Next** to continue. Select **Static** if your ISP assigned you the IP address, subnet mask, gateway, and DNS server addresses.

Note: Make sure to remove your PPPoE software from your computer. The software is no longer needed and will not work through a router.

Click **Next**

SET USERNAME AND PASSWORD CONNECTION (PPPoE)

To set up this connection you will need to have a Username and Password from your Internet Service Provider. If you do not have this information, please contact your ISP.

Address Mode : ☒ Dynamic IP ☐ Static IP

IP Address : 0.0.0.0

User Name : _____

Password : _____

Verify Password : _____

Service Name : _____ (Optional)

Note: You may also need to provide a Service Name. If you do not have or know this information, please contact your ISP.

If you selected PPTP, enter your PPTP settings supplied by your ISP and your PPTP username and password. Click **Next** to continue.

Click **Next**

SET USERNAME AND PASSWORD CONNECTION (PPTP)

To set up this connection you will need to have a Username and Password from your Internet Service Provider. You also need PPTP IP address. If you do not have this information, please contact your ISP.

Address Mode : ☒ Dynamic IP ☐ Static IP

PPTP IP Address : 0.0.0.0

PPTP Subnet Mask : 0.0.0.0

PPTP Gateway IP Address : 0.0.0.0

PPTP Server IP Address (may be same as gateway) : _____

User Name : _____

Password : _____

Verify Password : _____

If you selected L2TP, enter your L2TP settings supplied by your ISP and your L2TP username and password. Click **Next** to continue.

SET USERNAME AND PASSWORD CONNECTION (L2TP)

To set up this connection you will need to have a Username and Password from your Internet Service Provider. You also need L2TP IP address. If you do not have this information, please contact your ISP.

Address Mode: ☒ Dynamic IP ☐ Static IP

L2TP IP Address:

L2TP Subnet Mask:

L2TP Gateway IP Address:

L2TP Server IP Address
(may be same as gateway):

User Name:

Password:

Verify Password:

Click **Next**

If you selected Big Pond, select your authentication server from the drop down menu. You will also need to enter your Big Pond username and password. Click **Next** to continue.

SET USERNAME AND PASSWORD CONNECTION (BIGPOND)

To set up this connection you will need to have a Username and Password from your Internet Service Provider. You also need BigPond IP address. If you do not have this information, please contact your ISP.

Auth Server:

Bigpond Server IP Address
(may be same as gateway):

Bigpond User Name:

Bigpond Password:

Bigpond Verify Password:

Click **Next**

If you selected Static, enter your network settings supplied by your Internet provider. Click **Next** to continue.

SET STATIC IP ADDRESS CONNECTION

To set up this connection you will need to have a complete list of IP information provided by your Internet Service Provider. If you have a Static IP connection and do not have this information, please contact your ISP.

IP Address:

Subnet Mask:

Gateway Address:

Primary DNS Address:

Secondary DNS Address:

Click **Next**

If you selected Russian PPPoE, enter your PPPoE username and password. Click **Next** to continue. Select **Static** if your ISP assigned you the IP address, subnet mask, gateway, and DNS server addresses.

Note: Make sure to remove your PPPoE software from your computer. The software is no longer needed and will not work through a router.

SET USERNAME AND PASSWORD CONNECTION (RUSSIAN PPPoE)

To set up this connection you will need to have a Username and Password from your Internet Service Provider. If you do not have this information, please contact your ISP.

Address Mode: ☒ Dynamic IP ☐ Static IP

IP Address:

User Name:

Password:

Verify Password:

Service Name: (Optional)

WAN Physical Address Mode: ☒ Dynamic IP ☐ Static IP

WAN Physical IP Address:

WAN Physical Subnet Mask:

WAN Physical Primary DNS Address:

WAN Physical Secondary DNS Address:

Note: You may also need to provide a Service Name. If you do not have or know this information, please contact your ISP.

[Prev](#) [Next](#) [Cancel](#)

Click **Next**

If you selected Russian PPTP, enter your PPTP settings supplied by your ISP and your PPTP username and password. Click **Next** to continue.

SET USERNAME AND PASSWORD CONNECTION (RUSSIAN PPTP)

To set up this connection you will need to have a Username and Password from your Internet Service Provider. You also need PPTP IP address. If you do not have this information, please contact your ISP.

PPTP Server IP Address (may be same as gateway):

User Name:

Password:

Verify Password:

WAN Physical Address Mode: ☒ Dynamic IP ☐ Static IP

WAN Physical IP Address:

WAN Physical Subnet Mask:

WAN Physical Gateway IP Address:

WAN Physical Primary DNS Address:

WAN Physical Secondary DNS Address:

[Prev](#) [Next](#) [Cancel](#)

Click **Next**

Click **Connect** to save your settings. Once the router is finished rebooting, click **Continue**. Please allow 1-2 minutes to connect.

Close your browser window and reopen it to test your Internet connection. It may take a few tries to initially connect to the Internet.

SETUP COMPLETE!

The Setup Wizard has completed. Click the Connect button to save your settings and restart the router.

[Prev](#) [Connect](#) [Cancel](#)

Click **Connect**

Technical Support

D-Link's website contains the latest user documentation and software updates for D-Link products.

U.S. and Canadian customers can contact D-Link Technical Support through our website or by phone.

United States

Telephone

(877) 354-6555

World Wide Web

<http://support.dlink.com>

Canada

Telephone

(877) 354-6560

World Wide Web

<http://support.dlink.com>



Version 1.2
January 19, 2009

Copyright ©2007-2009 D-Link Corporation/D-Link Systems, Inc. All rights reserved. D-Link and the D-Link logo are registered trademarks of D-Link Corporation or its subsidiaries in the United States and other countries. Other trademarks are the property of their respective owners. Maximum wireless signal rate derived from IEEE Standard 802.11g specifications. Actual data throughput will vary. Network conditions and environmental factors, including volume of network traffic, building materials and construction, and network overhead, lower actual data throughput rate. Environmental factors will adversely affect wireless signal range. Product specifications, size and shape are subject to change without notice, and actual product appearance may differ from that depicted on the packaging. Visit www.dlink.com for more details.